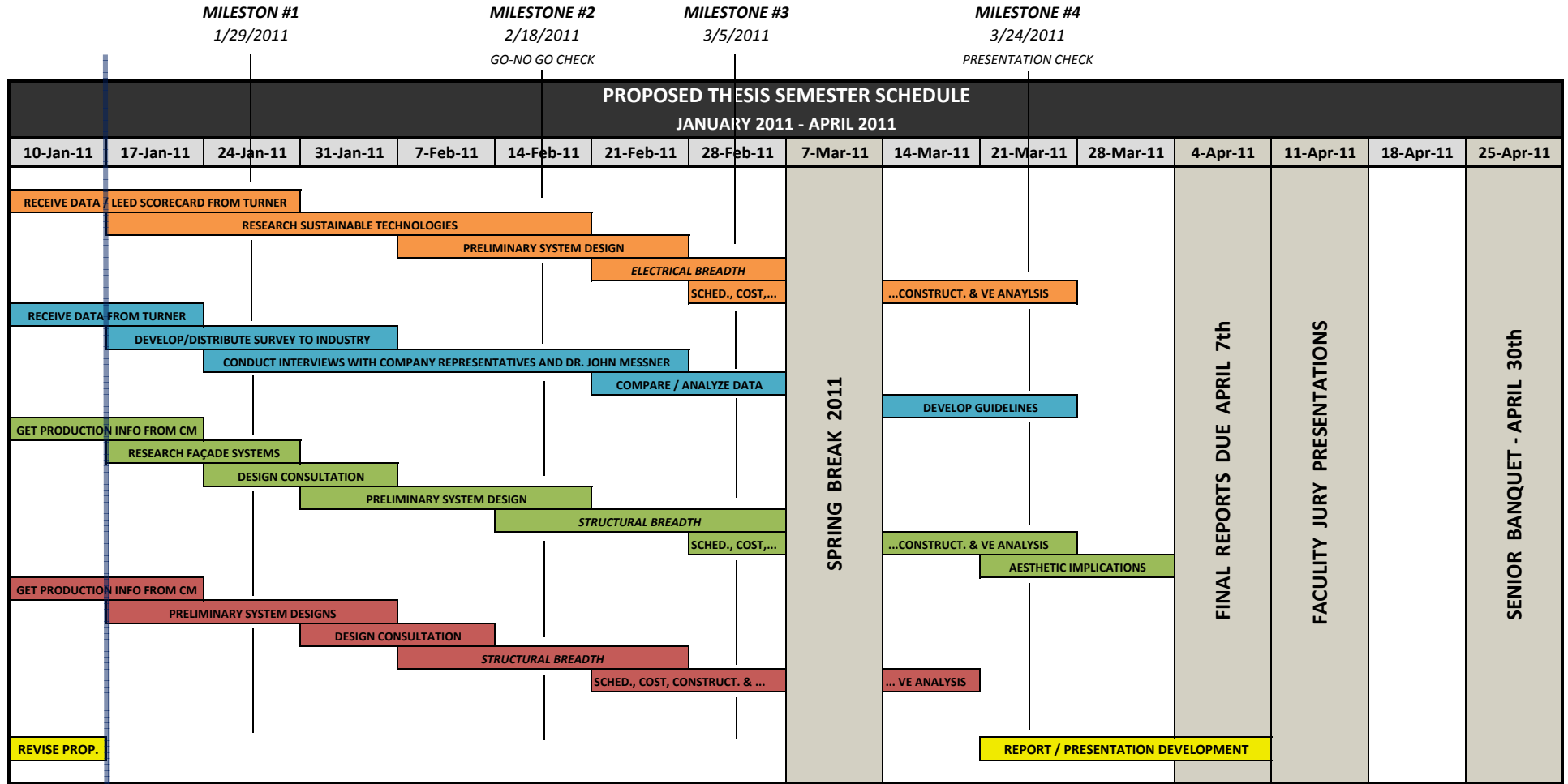


# UNIVERSITY SCIENCES BUILDING - NORTHEASTERN U.S.

SENIOR THESIS FINAL PROPOSAL  
1/17/2011

JUSTIN GREEN  
CONSTRUCTION MANAGEMENT  
ADVISOR: DR. RILEY



**MILESTONES**

- 1 RECEIVE ALL DATA FROM TURNER, START RESEARCH/DESIGN FOR ALL
- 2 COMPLETE PRELIMINARY DESIGN FOR ANALYSIS #4, RECEIVE DESIGN CONSULTATION
- 3 COMPLETE ALL PRELIMINARY DESIGNS, COMPLETE STRUCTURAL BREADTH FOR #4
- 4 COMPLETE CONSTRUCT. & VE ANALYSIS FOR #4, WRAP UP THE OTHER ANALYSES, START REPORT

**ANALYSIS DESCRIPTION**

- ANALYSIS #1: SUSTAINABLE TECHNIQUES / ENERGY EFFICIENCY
- ANALYSIS #2: IMPLEMENTATION OF BIM
- ANALYSIS #3: BUILDING ENCLOSURE - PREFABRICATION
- ANALYSIS #4: SIMPLIFICATION OF STRUCTURAL SYSTEM