

DOLPHIN MALL EXPANSION MIAMI, FLORIDIA

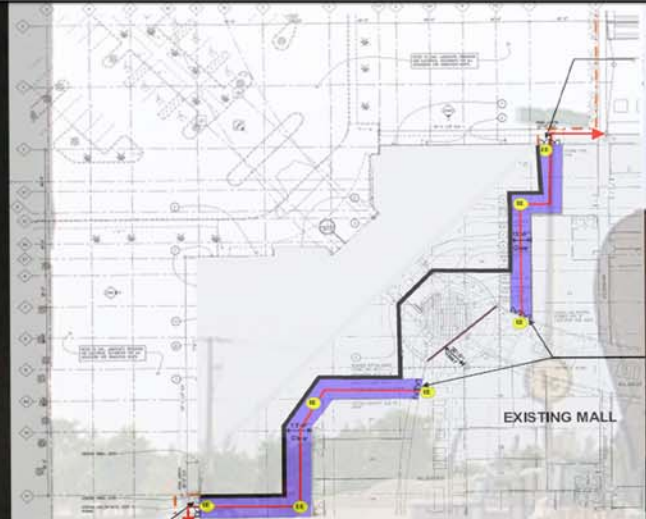


PROJECT TEAM:

Owner - Taubman Centers/ Dolphin Mall Associated Limited Partnership
 Architect - Neumann Smith & Associates, Inc.
 Structural Engineer - L&A, Inc.
 Civil Engineer - The Good Group
 MEP Designer - E&S Construction Engineers
 Construction Manager - Skanska U.S.A. Building Inc.

PROJECT FEATURES:

Project Construction - May 2006 - December 2006
 Overall Project Cost - \$6,400,000 with \$535,000 Expected Cost Increase
 Expansion Size - 32,000 Sq Ft
 Delivery Method - Design - Bid - Build
 Building Function - High-End Retail Mall Space



CONSTRUCTION:

- Expansion to Include
- 48,000 Sq Ft of Demolition
 - 3,100 Sq Ft of Temporary Egress Corridor
 - 32,000 Sq Ft of Dolphin Mall Expansion
 - 45,000 Sq Ft of Boat Storage Area
 - 154,000 Sq Ft of Certified Bass Pro Shop Pad

MEP:

- Plumbing**
- Demo/Replace/Add 12 and 15-Inch Storm Water Plumbing and Overflow Lines
- Mechanical**
- Demo/Replace/Add Various Ducts For Tie-In With Existing 12x21-Inch and 24x10-Inch Supply Lines
 - Relocate 8000 CFM Roof Top Air Handling Unit and Install New 4900 CFM Roof Top Air Handling Unit
- Sprinkler**
- Demo/Replace/Add 8-Inch Main Mall Sprinkler Lines and Install New 4-Inch Branch Lines
- Lighting**
- 277 Volt 32 Watt T8 Fluorescents and Lead-Acid Battery Type, Self Contained Emergency Lighting
- Electrical**
- 480/277 Volt 3 Phase Service
 - 480 Volt 100 Amp Disconnects in Mall and at Boat Storage Area

STRUCTURAL:

- Non-Load Bearing Pre-Cast Wall Panels
- 6x6x3/8-Inch HSS Column Construction with Engineered Joists Spanning 40x40-Foot Bays.
- 18 to 36-Inch Deep Pad Footings with 4-Inch Slab-On-Grade
- Lightweight Concrete/ 20 Ga. Metal Deck Roof System
- Hurricane Wall 12-Inch, 16 Ga. Studs 24-Inch O.C. to Withstand 146 MPH Winds.
- Doors and Windows are Miami-Dade Hurricane rated



TRAVIS ANDERSON SMITH
 CONSTRUCTION MANAGEMENT

<http://www.arche.psu.edu/thesis/eportfolio/2007/portfolios/TAS317/>