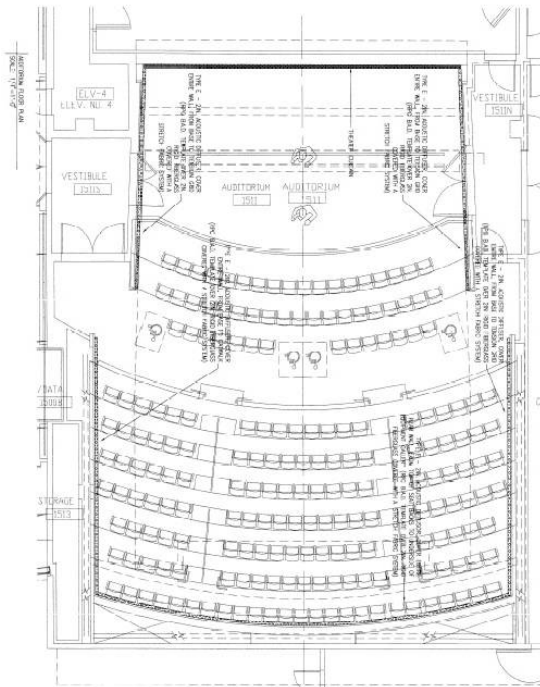
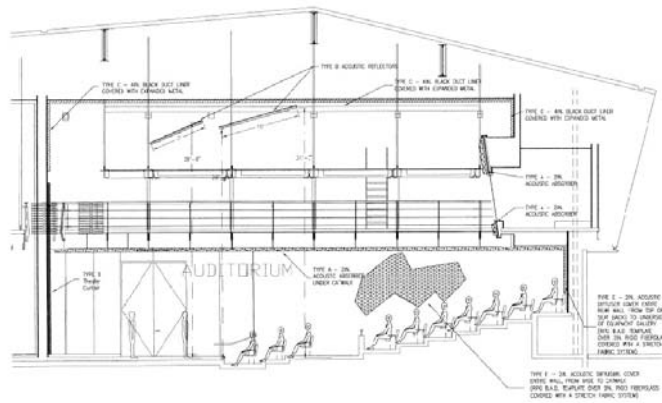


Lighting Proposal Memo

Brian Smith
UCSD Cal (IT)²
San Diego, CA

1. Black-Box Theater

In section C of the building, a 200 seat black-box theater exists for performances and presentations from the technical fields within the Cal (IT)² building. The theater is approximately 50 ft x 58 ½ ft. For the most part, everything in the theater is painted or colored black. The walls are covered with acoustic diffuser panels painted black. The front curtains to the stage are a black heavyweight material. The ceiling contains acoustically reflective ceiling clouds, also painted black to reflect the sound effectively within the space. In this space, there are many different approaches that can be used to light the space and is one of the more interesting spaces within Cal (IT)².



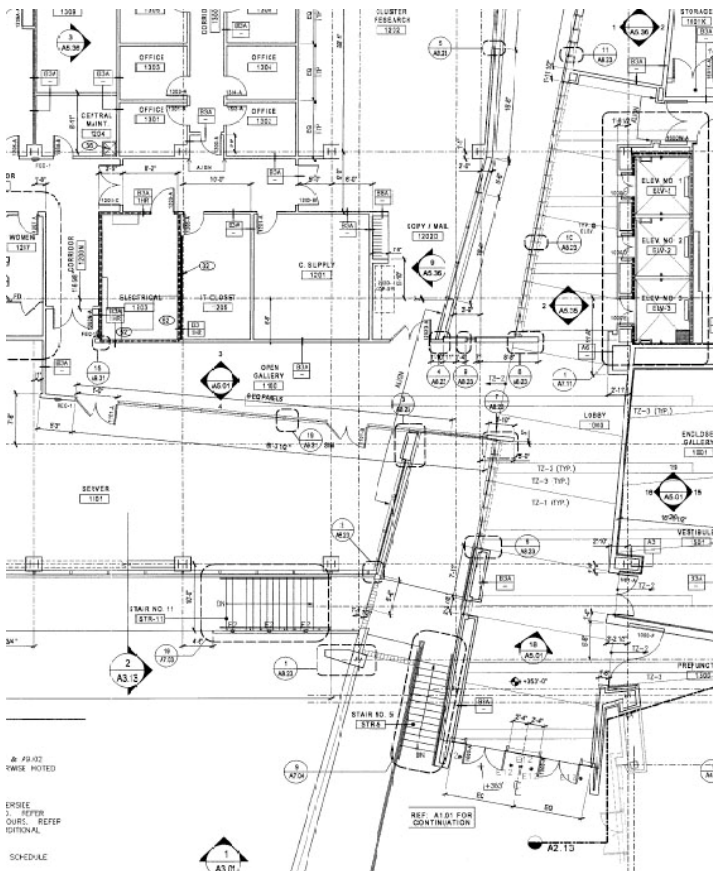
2. Lobby 1st floor

The lobby faces the east side of the building in the corner of the intersecting parts in the courtyard. This long lobby which eventually leads to the elevators for transportation to the upper floors also has a bridge over the underground tunnel running through the building. The lobby's rough dimensions run about 98 ft long towards the elevators and about 25 ft in the widest part by the entry doors. The bridge over the tunnel, also called the "worm-hole", is about 15 ft wide at its widest part and 7 ft at



its narrowest portion where it leads to a hallway on the other side for laboratories and offices. This space will be an interesting space to light, because it is the main entrance to the building. The main function and purpose of the building should be shown here in some way through the lighting and also acts as a navigator to guide you through the building. Being a technological building, many different approaches can be taken. The walls are painted grey with a white covered ceiling and other light green walls. Glass panels overlooking the tunnel are also on the walls opposite the elevators on the western

end.



3. Open Cluster Research Area 3100



The open Cluster Research Area 3100 on the third floor is a large open office type area where many cubicles, tables, and open areas will exist. It is a rather large area with rough dimensions of about 101 ft x 68 ft with a bathroom sticking into the space and corridors leading into and out from the space. The entire space is surrounded by small offices with wooden doors, and glass panels next to each door. Glass windows are also surrounding the space above all the offices to possibly allow

some daylight into the space. The walls are all painted a light green color with an open ceiling exposing dark grey ductwork and trusses. This space would require a daylighting study along with VDT lighting and open office requirements. The furniture is unknown at this point and time. 4 ½ ft high cubicles are assumed with a work plane height of 2 ½ ft.



4. Academic Courtyard

The academic courtyard is the area just outside the eastern entrance facing the campus. It contains concrete pathways, a large teddy bear sculpture, and entrances to the auditorium, main lobby, and underground tunnel or “wormhole” through the Cal (IT)² building. Included in this space would be the eastern elevation façade lighting on the Cal (IT)² building. There are a variety of trees in this space predetermined by the University of California, San Diego standards with are randomly placed throughout the space also. An open canopy also overhangs the path leading to the wormhole through the building. The site is approximately 280 ft x 95 ft.

