

HOBOKEN RESIDENTIAL

158 14th Street, Hoboken New Jersey

BIJOU PROPERTIES

Sharples, Holden & Pasquarelli Architects
Buro Happold, Structural & MEP Engineers

Five story renovation with side & top addition
Condominiums - Retail ground floor
68,000 Square Feet - Silver LEED rated

MECHANICAL

CAV Fan Coil Units - Fin Tube Radiators

Centralized Outdoor Air Supply
15000 & 1800 CFM Roof Top Units
Centralized Chilled Water & Hot Water
Two Fifty Two Ton Scroll Chillers
Two 275 GPM Cooling Towers
Two Fourteen Hundred MBH boilers

ELECTRICAL

1200 A 120 / 208 V

STRUCTURAL

Renovated Building:

Concrete Footing and Tapering Brick Piers
Cast Iron Columns, Encased in Concrete
14 and 23 Foot Spans
Concrete Beams & Girders with
Wide-Flange Tension Reinforcing
Five Inch Formed Concrete Slabs

Addition:

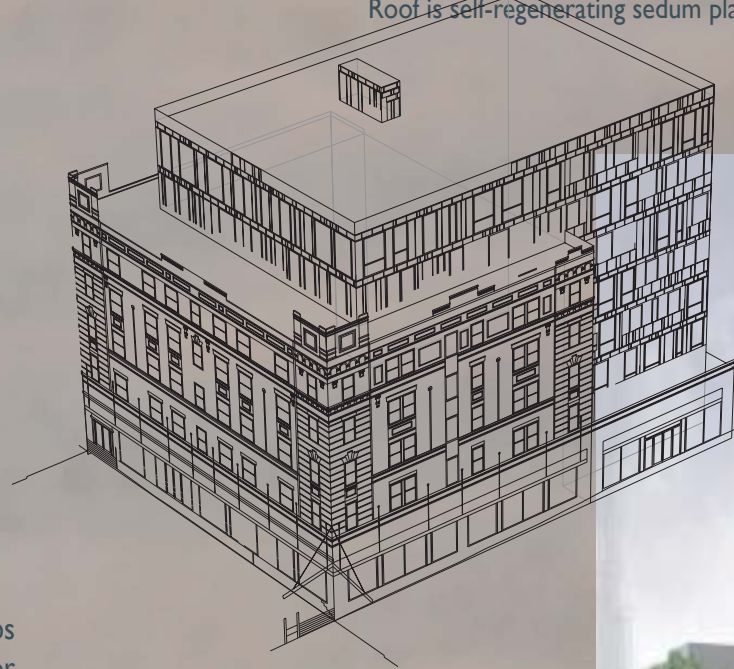
Concrete Footings with Minipiles
Steel Deck with Poured Concrete Slabs
Steel Moment Frame on First Floor
Braced Frame on Second thru Seventh Floors

JENNY HAMP

Mechanical Option B A E / M A E



Beige brick masonry exterior, with zinc paneled addition
Roof is self-regenerating sedum plants and terraces



HOBOKEN RESIDENTIAL