

# Holy Cross Hospital – North Addition

Fall 2005  
Phil Mackey

# Existing Design

# Existing Design

## Building Functions:

- ◇ 1<sup>st</sup> floor consists of the new main entrance/lobby, concourse, conference center with multi-purpose room, and gift shop which aims to circulate people both exiting, entering, and traveling between wings within the hospital
- ◇ 2<sup>nd</sup> floor houses the new obstetrician exam wing and is directly connected to existing hospital corridors
- ◇ 3<sup>rd</sup> floor houses the new gynecological exam wing and is directly connected to existing hospital corridors
- ◇ 4<sup>th</sup> floor is currently not occupied but will be fitted-out at a later date and is directly connected to existing hospital corridors

# Existing Design



# Schematic Design

# Lighting Inspiration

- ◇ Historically ill were sent to tropics to recover
- ◇ Bright surroundings
- ◇ Light, "airy" mood
- ◇ Light levels + physical geometry determine intimacy/public spaces
- ◇ Clean, fresh feel to location



# Main Lobby Background

## Space Tasks:

- ◊ Main corridor that connects concourse/  
new addition/existing hospital
- ◊ Personal interaction including an  
informational/security desk

## Finishes:

- ◊ South and West Walls

Floor to ceiling glass

- ◊ North Wall

Light brown wood paneling

- ◊ East Wall

Blue mosaic curved art wall

- ◊ Floor

Light brown wood tile, carpet

- ◊ Ceiling

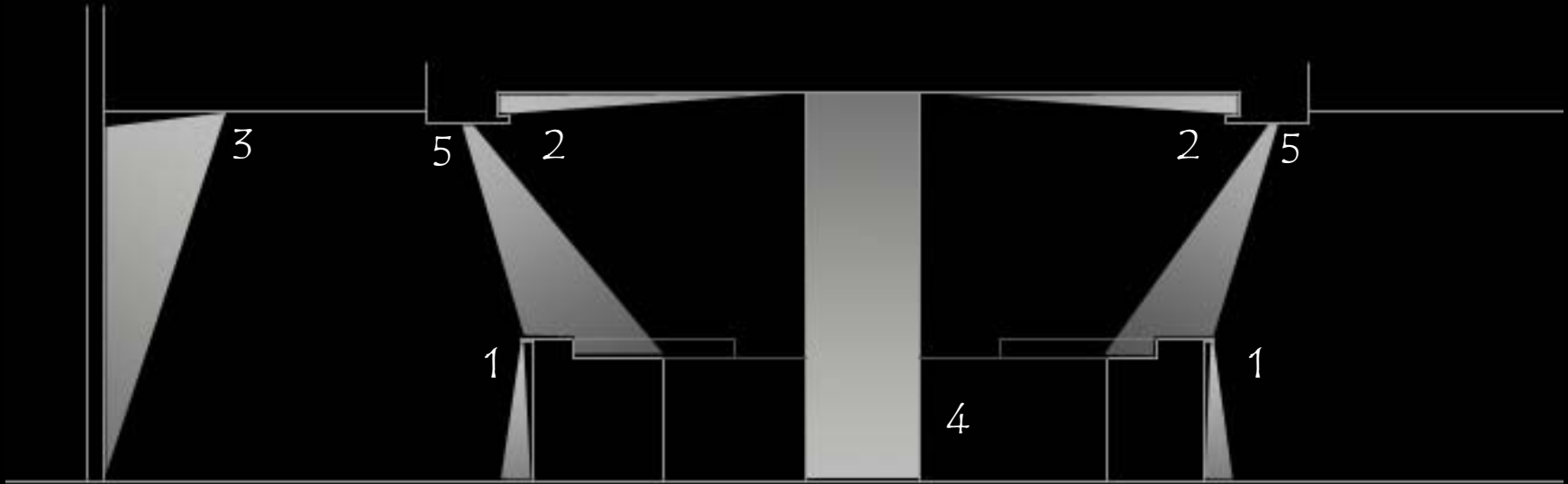
4ft x 4ft white ceiling panels, white gypsum





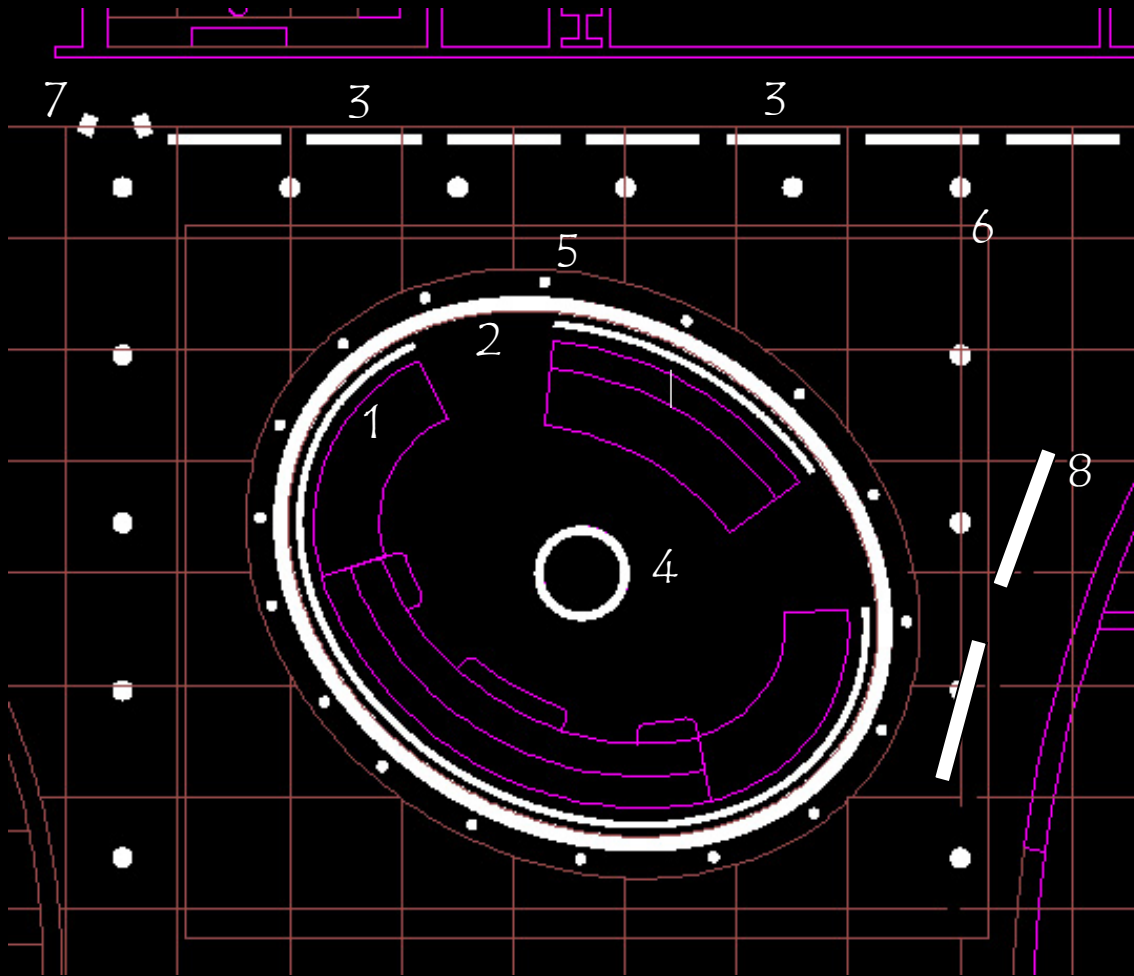


# Main Lobby Section



1. Flexible linear fluorescent wall wash washing the front of the information desk
2. Flexible fluorescent cove
3. Recessed linear wall wash lightly washing the north wall
4. LED linear source in air gap backlighting a translucent film on exterior of column
5. MR16 pinhole recessed adjustable downlight lighting the elliptical help desk from the elliptical bulkhead above

# Main Lobby Plan



1. Flexible linear fluorescent wall wash washing the front of the information desk
2. Flexible fluorescent cove
3. Recessed linear wall wash lightly washing the north wall
4. LED linear source in air gap backlighting a translucent film on exterior of column
5. MR16 pinhole recessed adjustable downlight lighting the elliptical help desk from the elliptical bulkhead above
6. Recessed fluorescent downlights for general illumination
7. Adjustable incandescent spotlight highlighting the art wall
8. Recessed linear wall wash grazing the curved art wall

# Registration Background

## Space Tasks:

- ◇ Day Surgery Registration/Check-in
- ◇ Personal interaction between hospital personnel and patient
- ◇ Fine print reading imperative with consistent VDT use

## Finishes:

### ◇ South Wall

Light brown wood paneling

### ◇ North Wall

Glass, portions etched

### ◇ East and West Walls

Open to main lobby and concourse

### ◇ Floor

Orange-brown carpet

### ◇ Ceiling

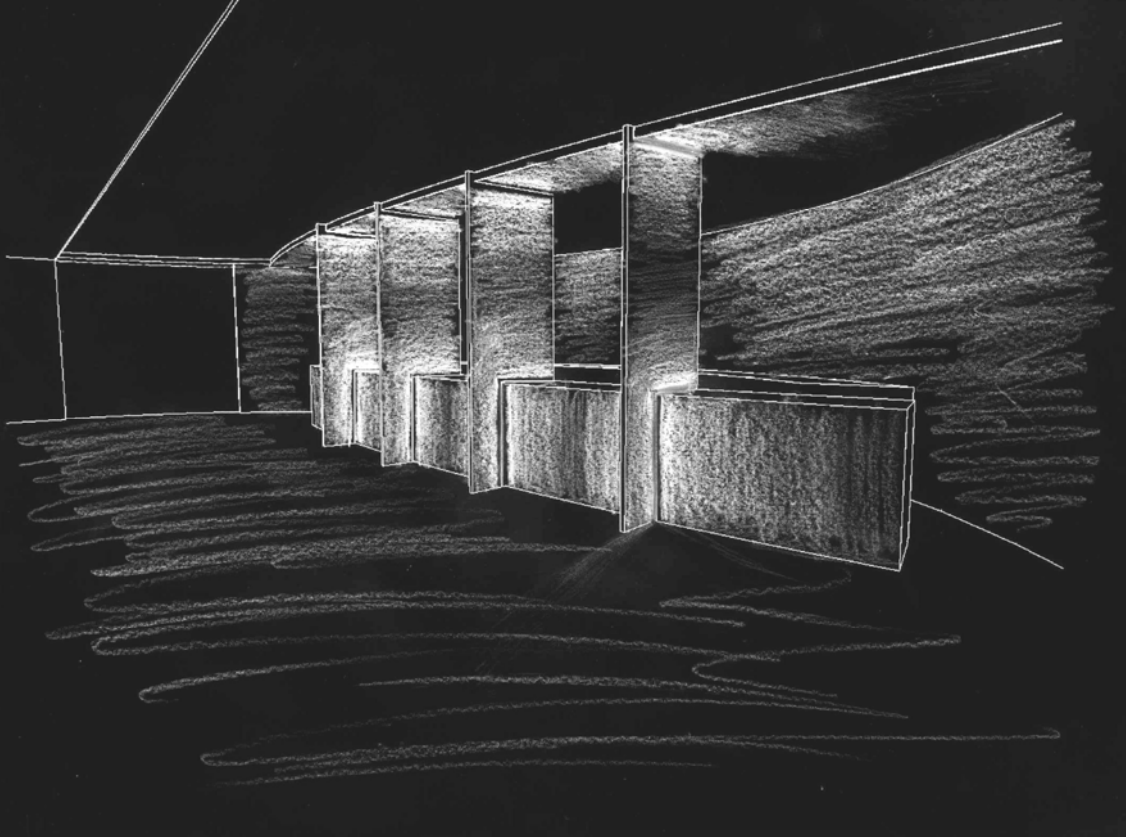
2 ft x 2ft white acoustical ceiling tile, white gypsum

### ◇ Partitions

Matte gray, perforated metal



# Registration



## Design Concepts:

- ◊ Highlight the vertical geometric partitions
- ◊ Draw attention to the main function of the space
- ◊ Provide adequate facial modeling for interaction
- ◊ Frame the back of the partitioned work spaces by accenting the curved back wall

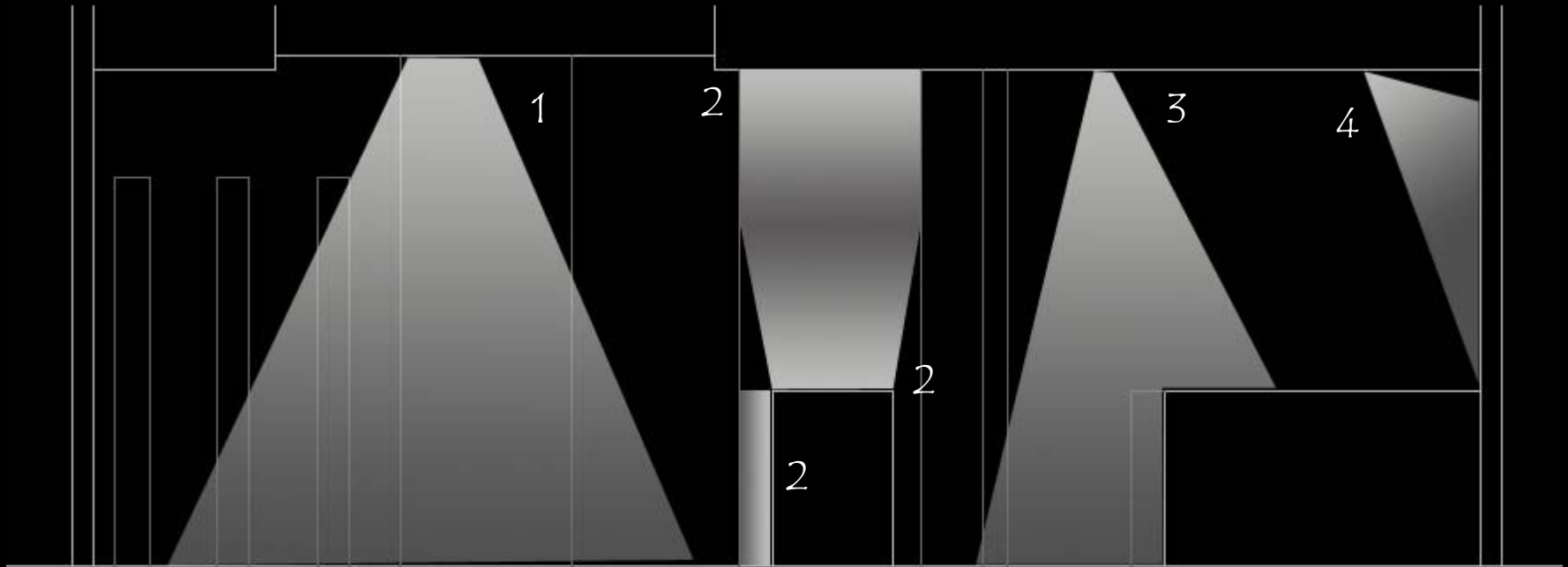
## Design Targets:

Target Illuminance: 30 fc H at desks  
10 fc H at corridor

CCT: 3500K

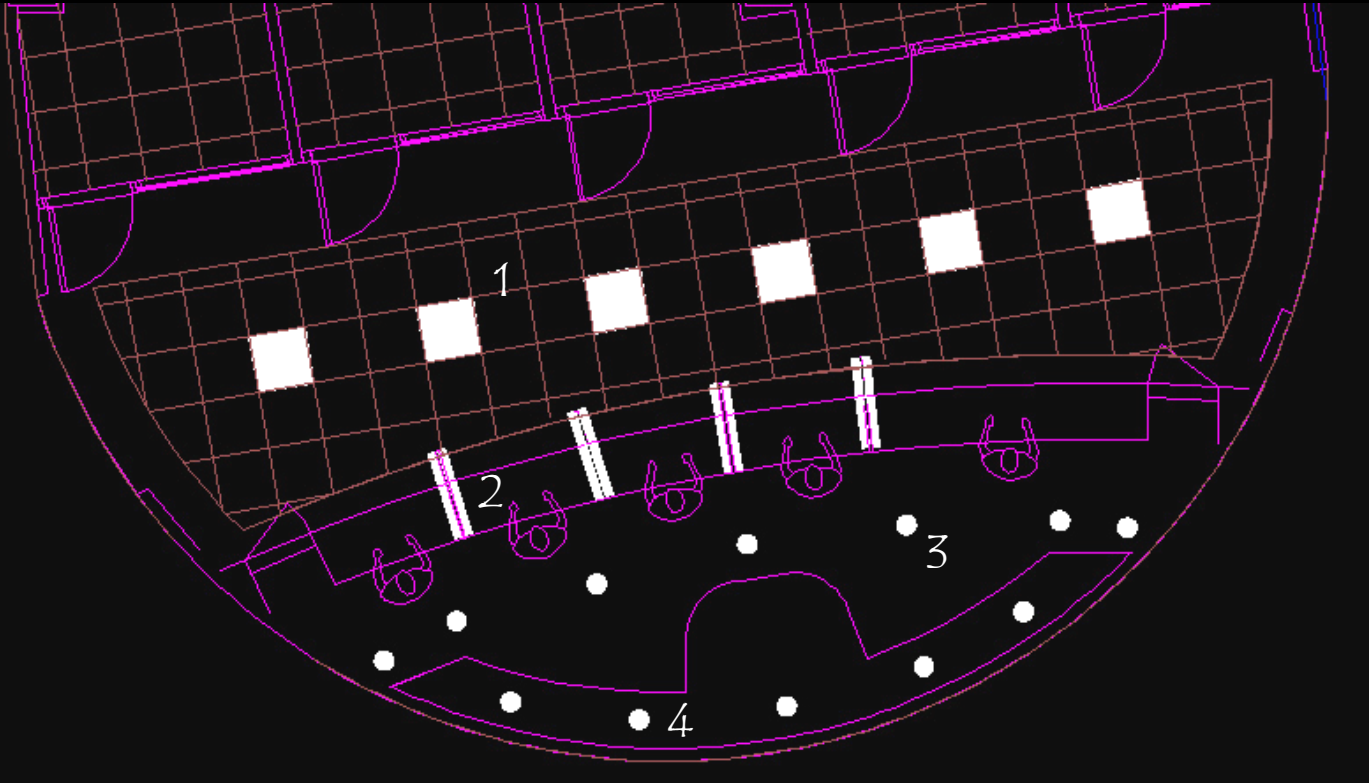
3000K grazing wooden paneled wall

# Registration Section



1. Recessed direct/indirect 2x2 linear fluorescents for ambient light
2. LED linear source with curved shield
3. Recessed fluorescent downlight for ambient light
4. Linear fluorescent wall wash lighting the wood paneled back wall

# Registration Plan



1. Recessed direct/indirect 2x2 linear fluorescents for ambient light
2. LED linear source with curved shield
3. Recessed fluorescent downlight for ambient light
4. Linear fluorescent wall wash lighting the wood paneled back wall

# Multi-Purpose Room Background

## Space Tasks:

- Guest lecturers, presentations, hospital staff events, etc.
- ◇ Personal interaction between participants
- ◇ Proper lighting levels on speaker/podium
- ◇ Flexibility with scene selection to accommodate a variety of events

## Finishes:

### ◇ Walls

Tan painted gypsum

### ◇ SE Corner Walls

Floor to ceiling glass

### ◇ Floor

Royal blue carpet

### ◇ Ceiling

2 ft x 2ft white acoustical ceiling tile, white gypsum



# Multi-Purpose Room



## Design Concepts:

- ◆ Provide flexible, dimmable general lighting
- ◆ Highlight walls to add extra depth/texture to space
- ◆ Provide adequate facial modeling for interaction
- ◆ Provide adjustable spot lighting for presentations

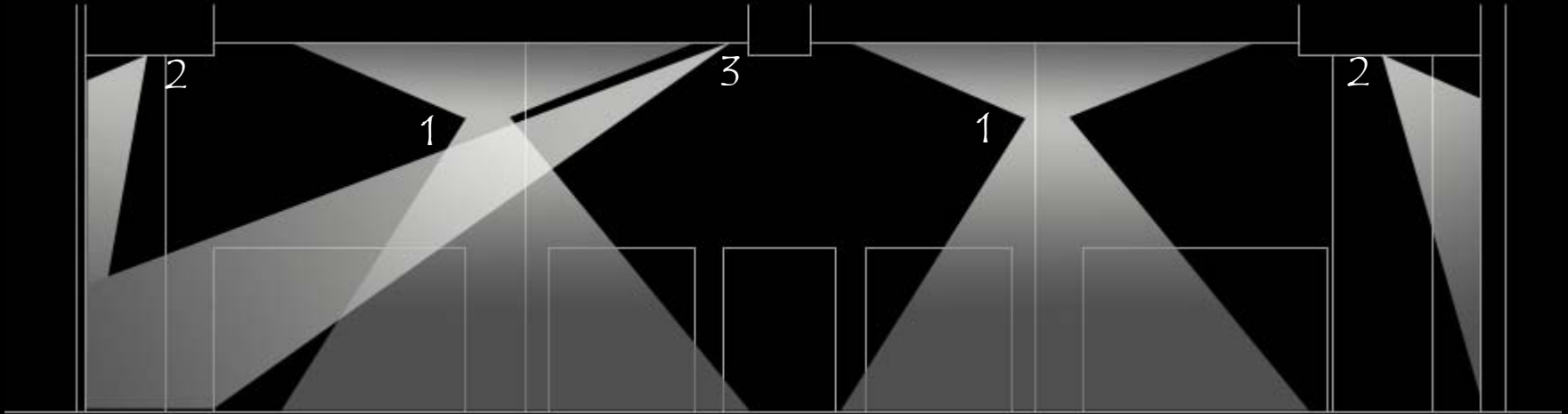
## Design Targets:

Target Illuminances: 30 fc H for reading  
60 fc V on presenter

CCT: 3500K

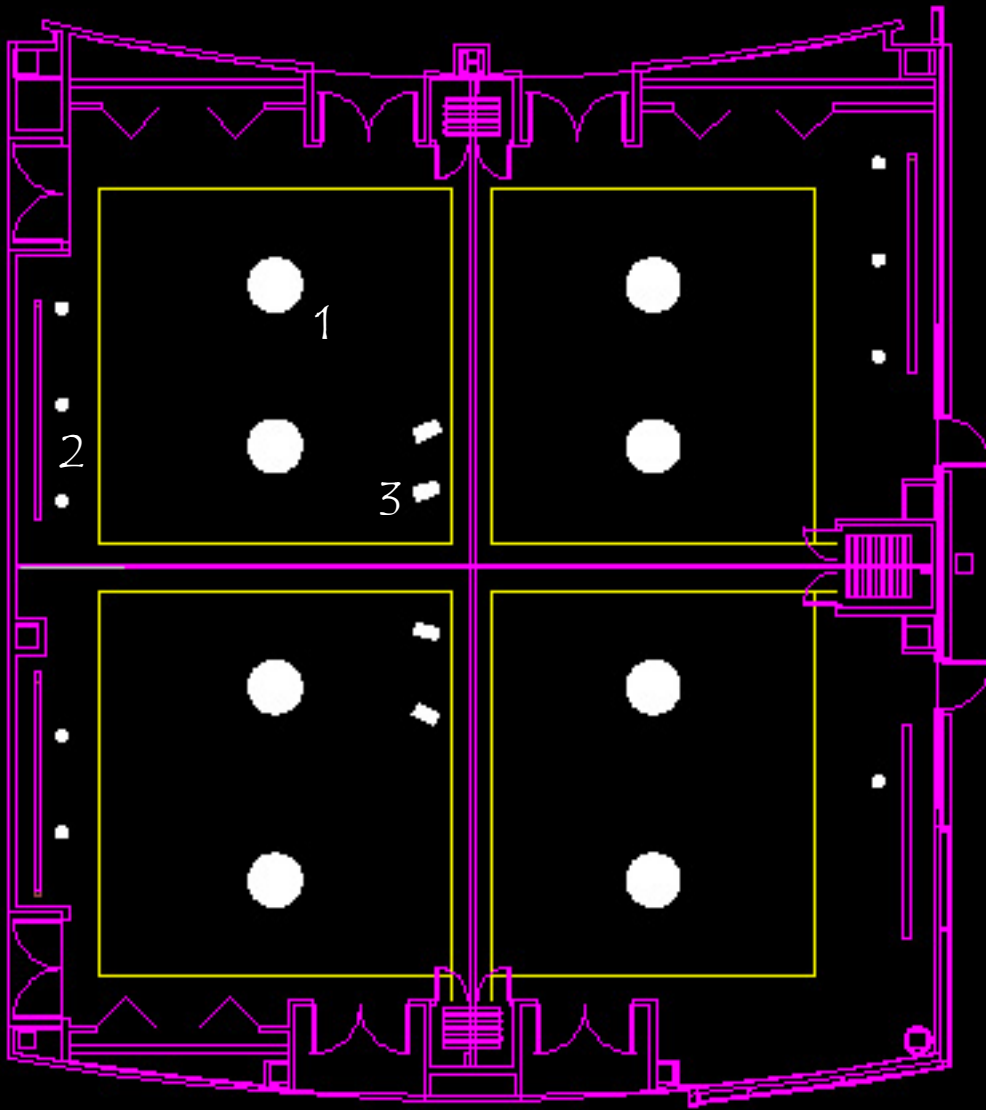


# Multi-Purpose Section



1. Decorative pendant indirect/direct fluorescent for ambient light
2. Recessed circular fluorescent wall wash lighting walls
3. Adjustable tight-angle spot

# Multi-Purpose Plan



1. Decorative pendant indirect/direct fluorescent for ambient light
2. Recessed circular fluorescent wall wash lighting walls
3. Adjustable tight-angle spot

# Exterior Background

## Space Tasks:

- ◇ Highlight entrance façade to draw visitors to main entrance
- ◇ Create a “beacon” for the community to locate
- ◇ Personal interaction at pick-up/drop-off area

## Finishes:

- ◇ Ground Level – South Wall

Floor to ceiling glass

- ◇ Upper Floors – South Wall

Tinted glass façade with structural steel frame

- ◇ East and West Walls

Light gray efis panels

- ◇ North Wall

Connected directly to existing hospital



# Exterior



## Design Concepts:

- ◊ Flood light west and east portions of the new wing to frame new addition from the ground and roof with adjustable cut-off fixtures
- ◊ Linear LED sources under structural members of awning to provide general entrance illumination while calling attention to main lobby entrance
- ◊ Wall wash 4-story atrium with mesh screen and interior fluorescent wall washers
- ◊ Grazing the two exterior columns flanking the entrance with downlights

