



# The Pennsylvania Academy of Music



Schematic Design Presentation  
December 15, 2006

David Smith

# Overview

Located in Lancaster, PA

65,000 square feet

4 stories, 3 above grade

Architect of record is  
Philip Johnson-Alan Ritchie  
Architects

Ground broke April 14, 2006,  
Will complete 1<sup>st</sup> Quarter 2008



# Building Uses

Music Education Facility

Concert Venue

Music Library

Event Hosting

Audio and Video Recording

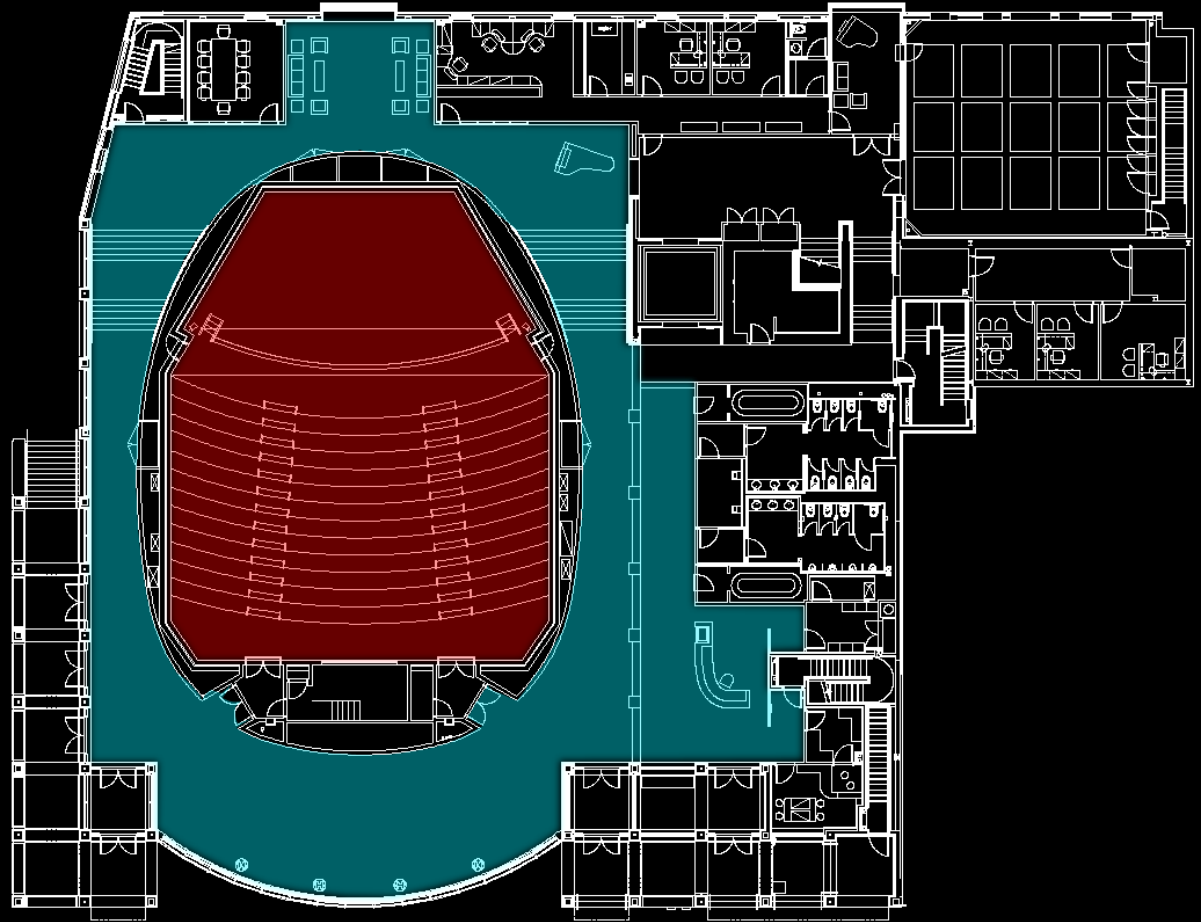
Broadcasting



# Ground Floor

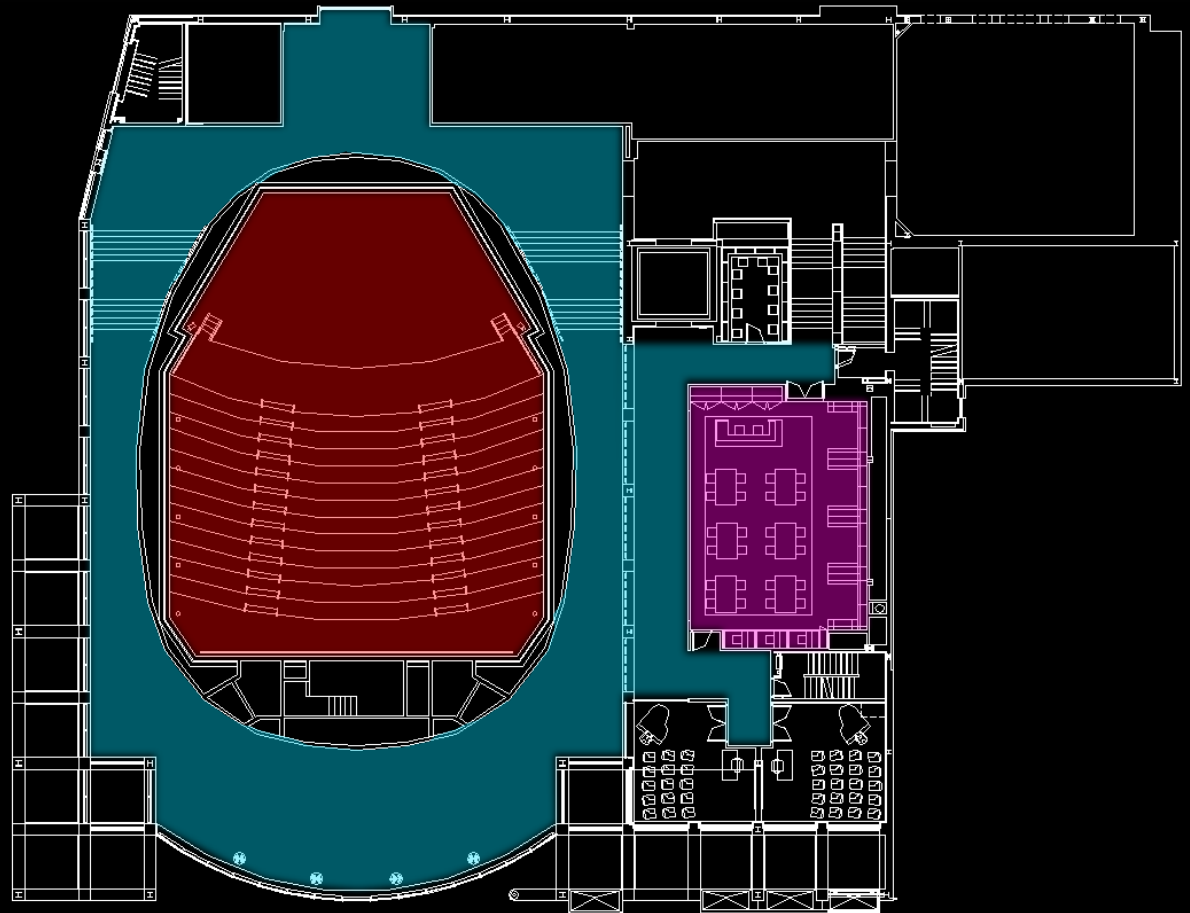
 Recital Hall

 Grand Foyer



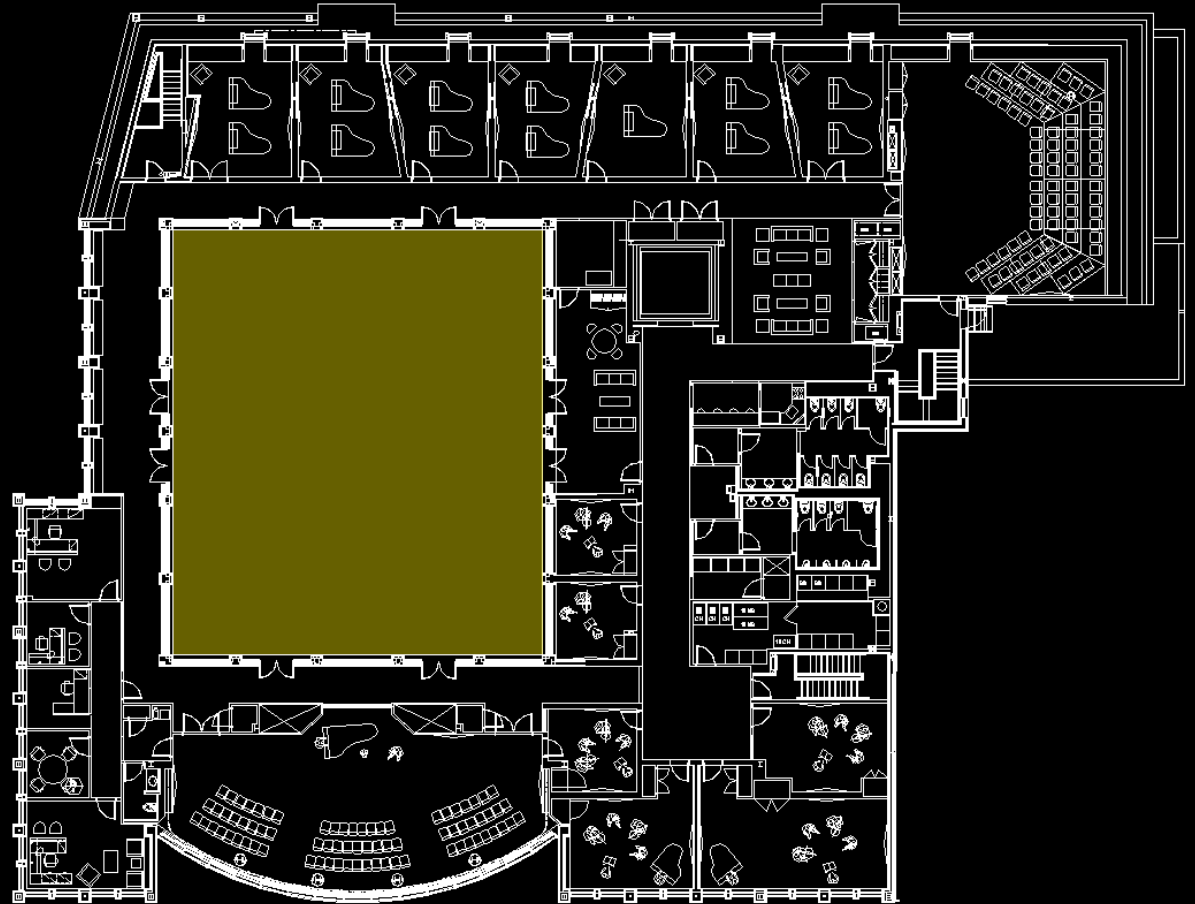
# Second Floor

- Recital Hall
- Grand Foyer
- Library



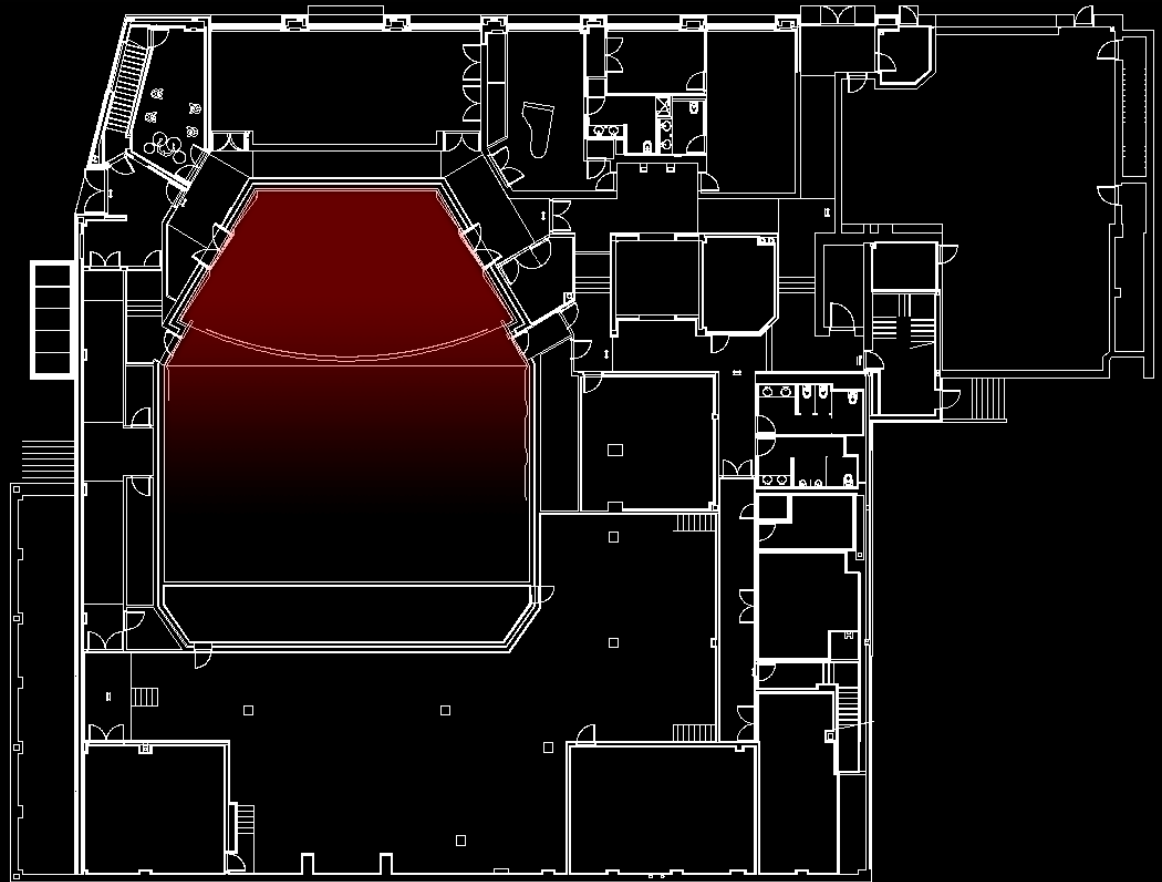
# Third Floor

 Roof Plaza



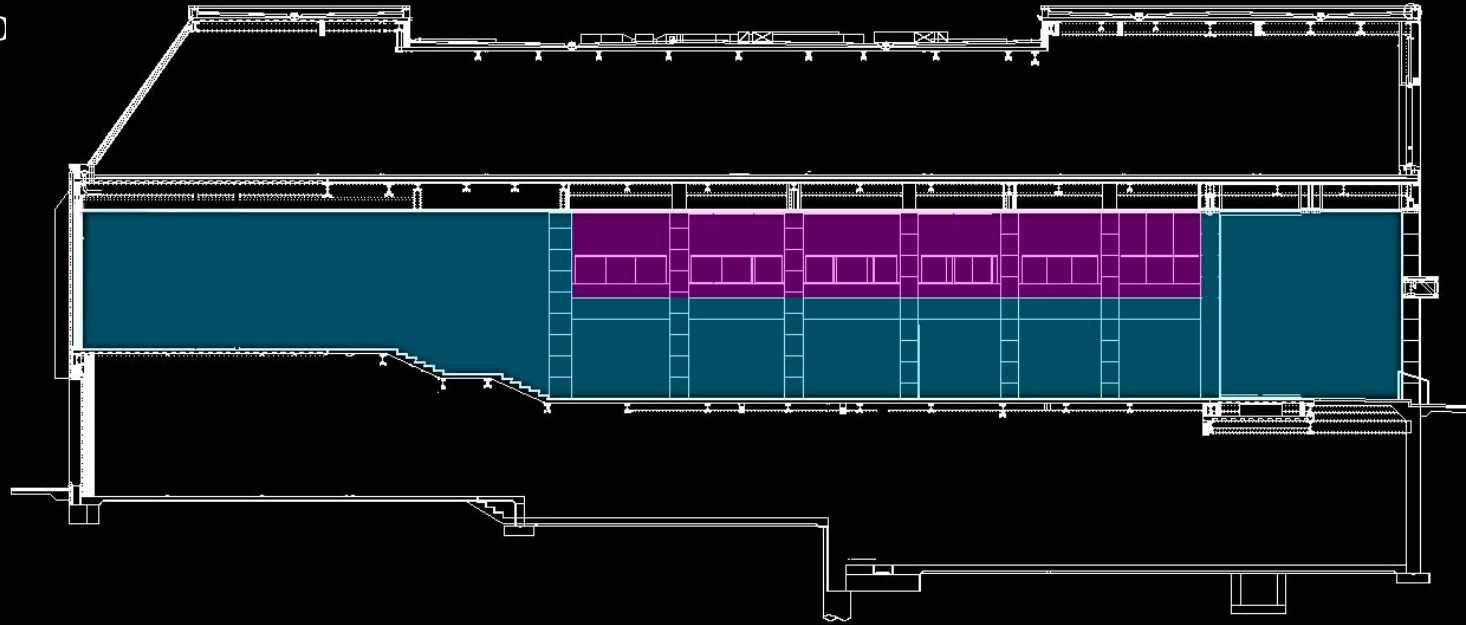
# Lower Level

 Recital Hall



# Section

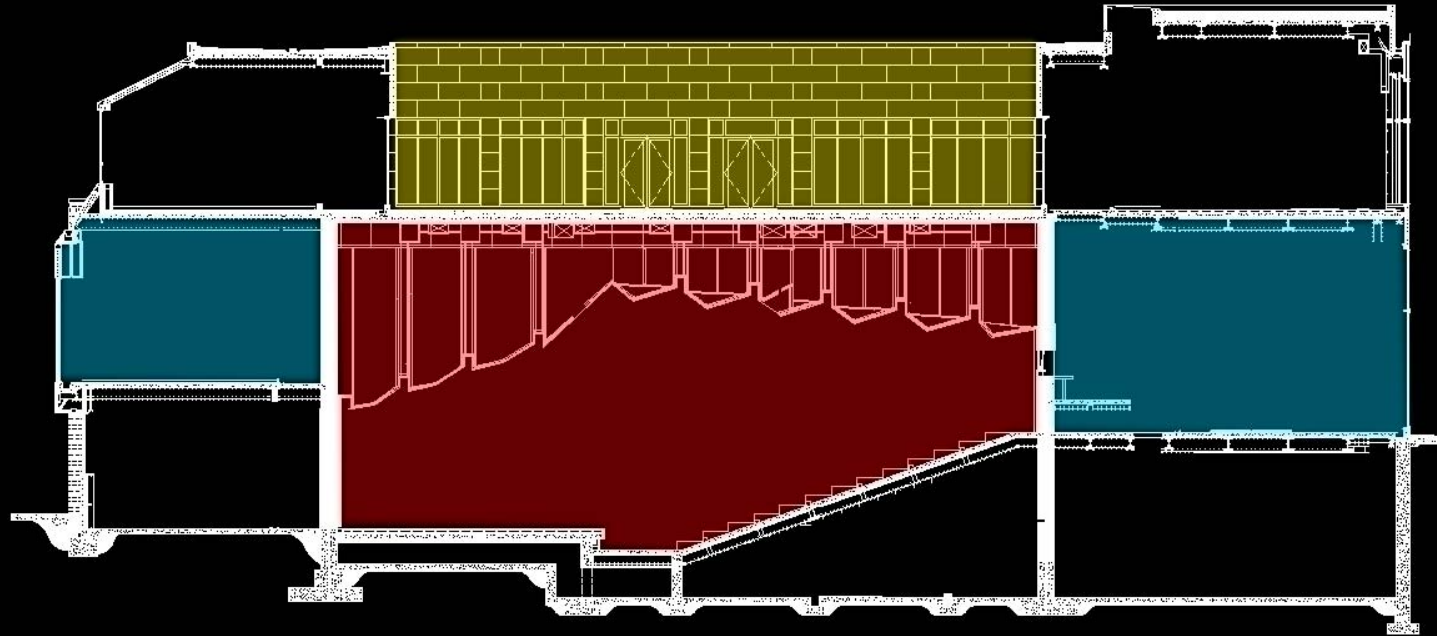
- Grand Foyer
- Library (Beyo





# Section

- Recital Hall
- Roof Plaza
- Grand Foyer



# Mission

**A relaxing evening of entertainment**

**Education and appreciation of the arts**

**Growth and achievement through music**

**Application of artistic theory throughout life**

# Recital Hall

## **Space Characteristics:**

**Walls:** White, triangular acoustical panels  
Light oak proscenium and stage walls

**Floor:** Dark blue carpeting and seats

**Ceiling:** White, triangular acoustical panels over seats  
Light oak triangular acoustical panels over stage

# Recital Hall

## **Design Goals:**

Create relaxing environment for experiencing music

Allow flexibility in the system for different stage lighting requirements of different performances

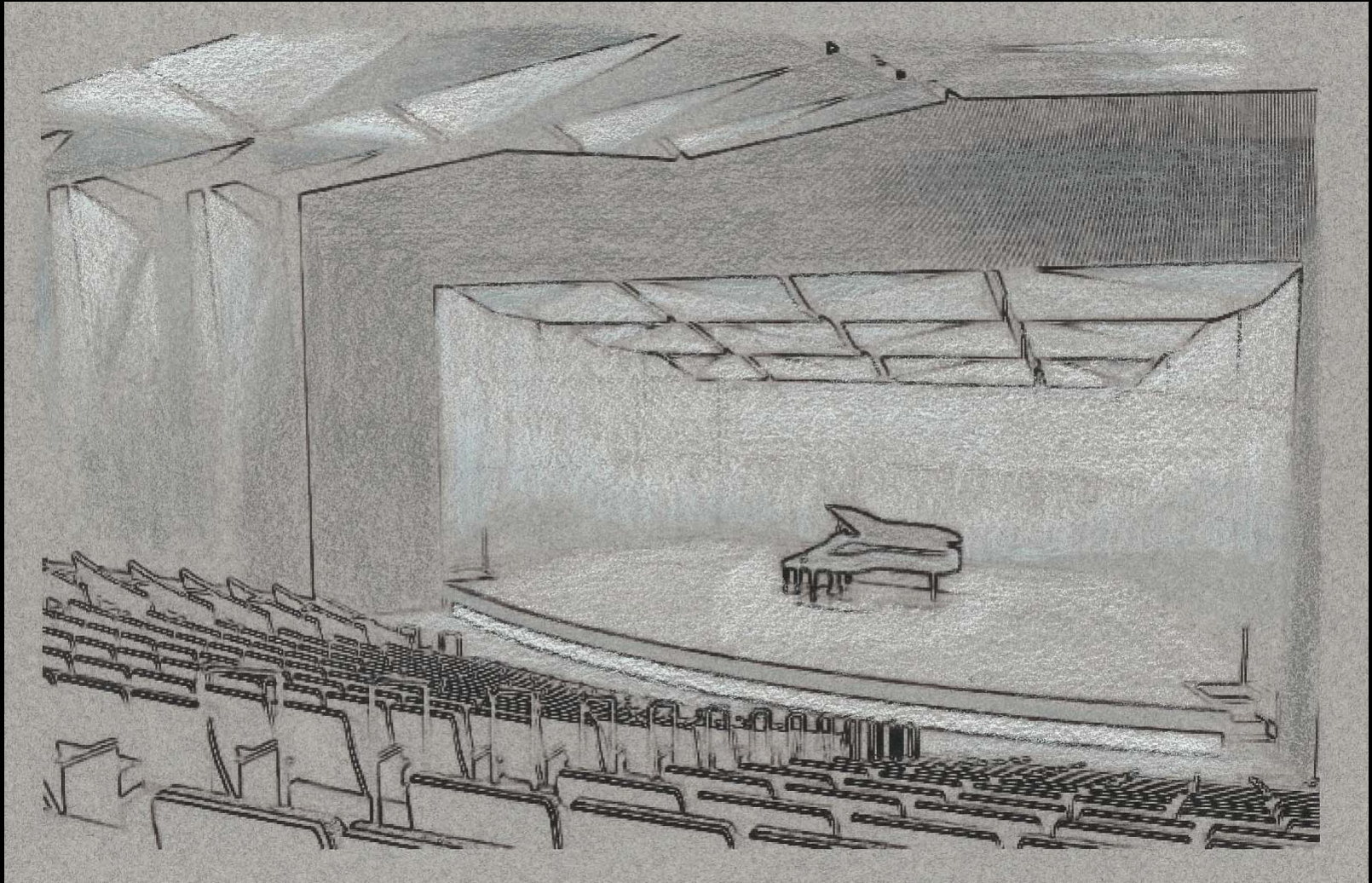
Highlight architecture while maintaining primary focus on the stage

# Recital Hall

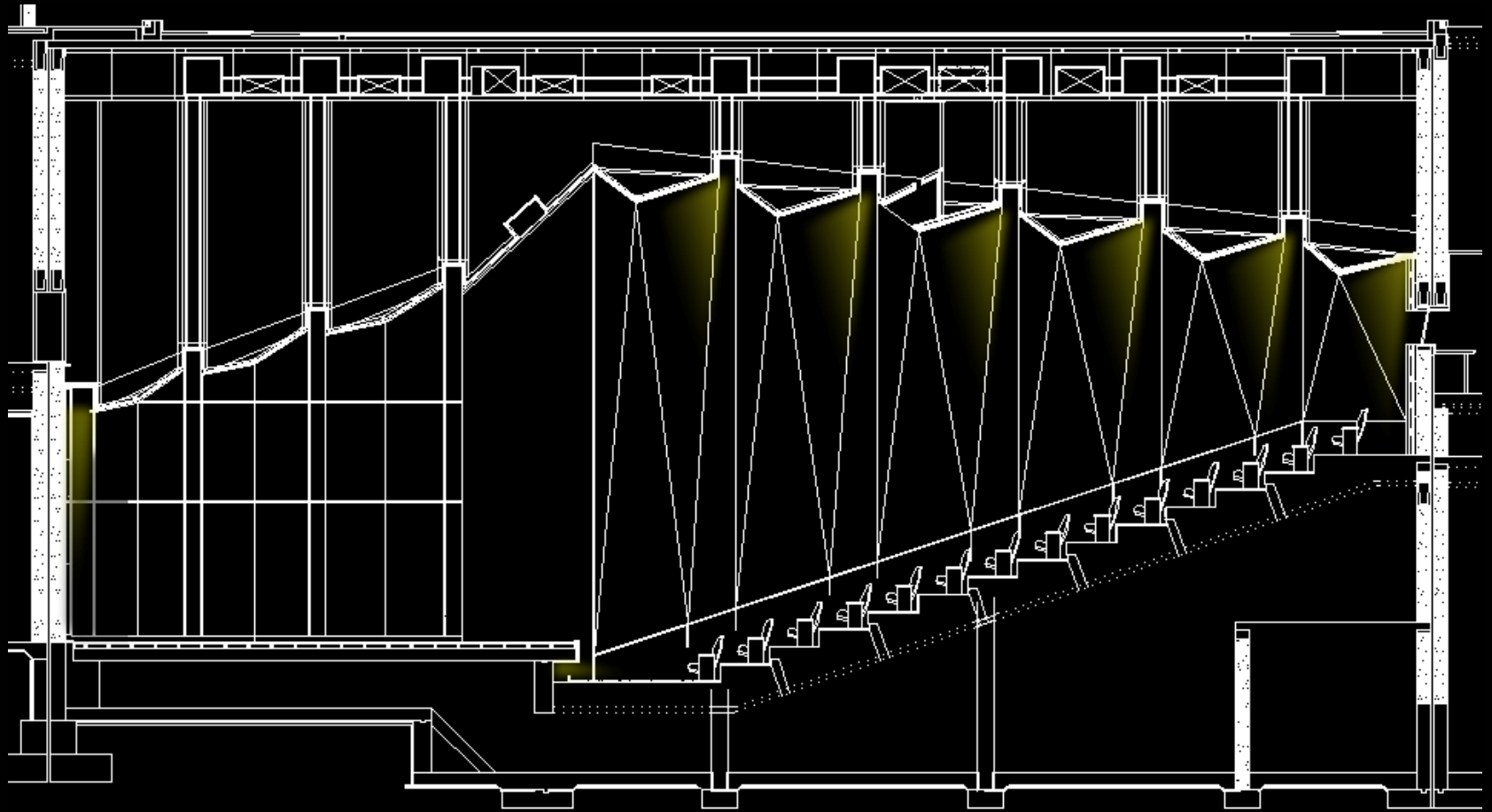
## Concept



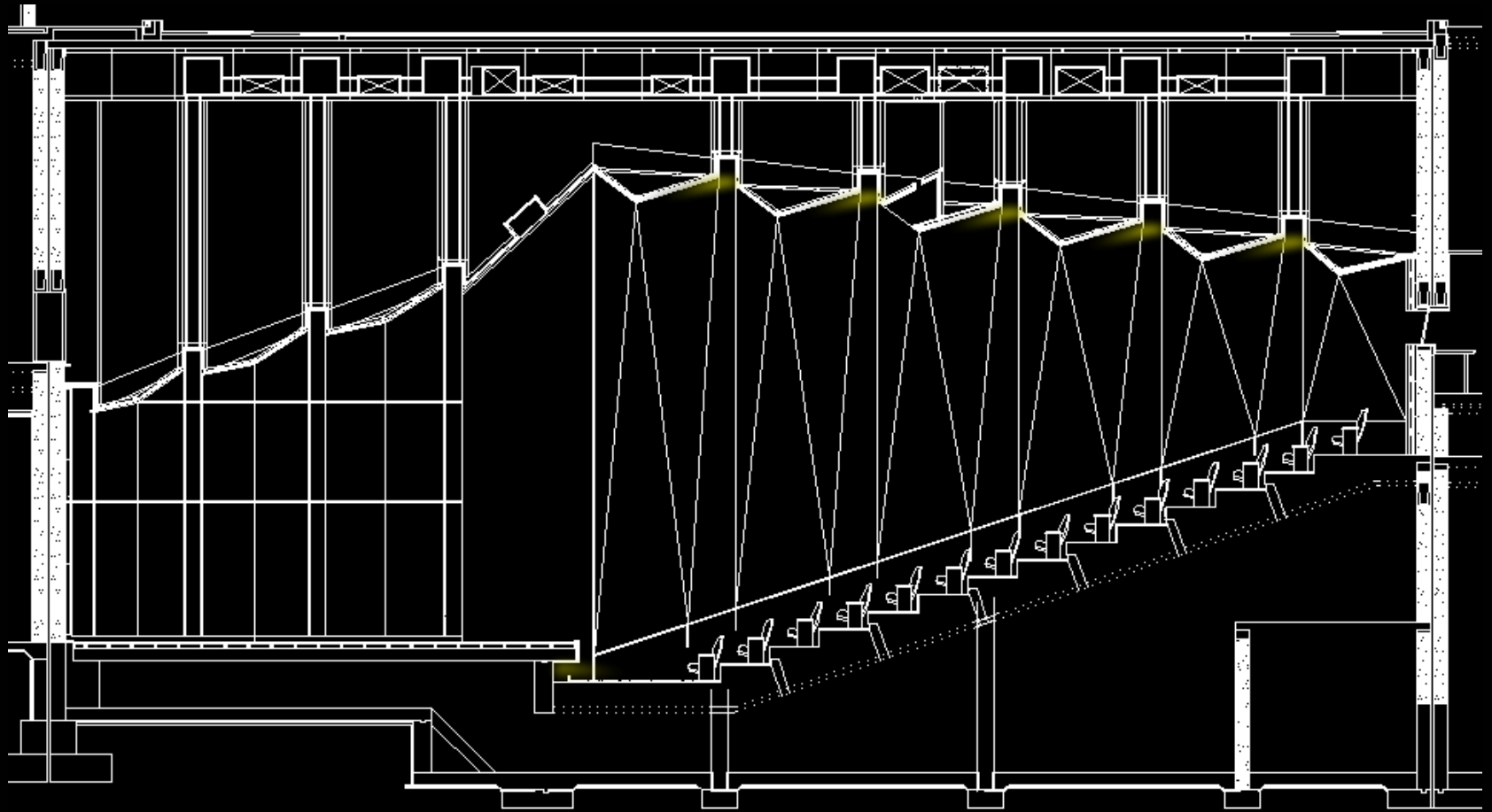
# Recital Hall



# Recital Hall

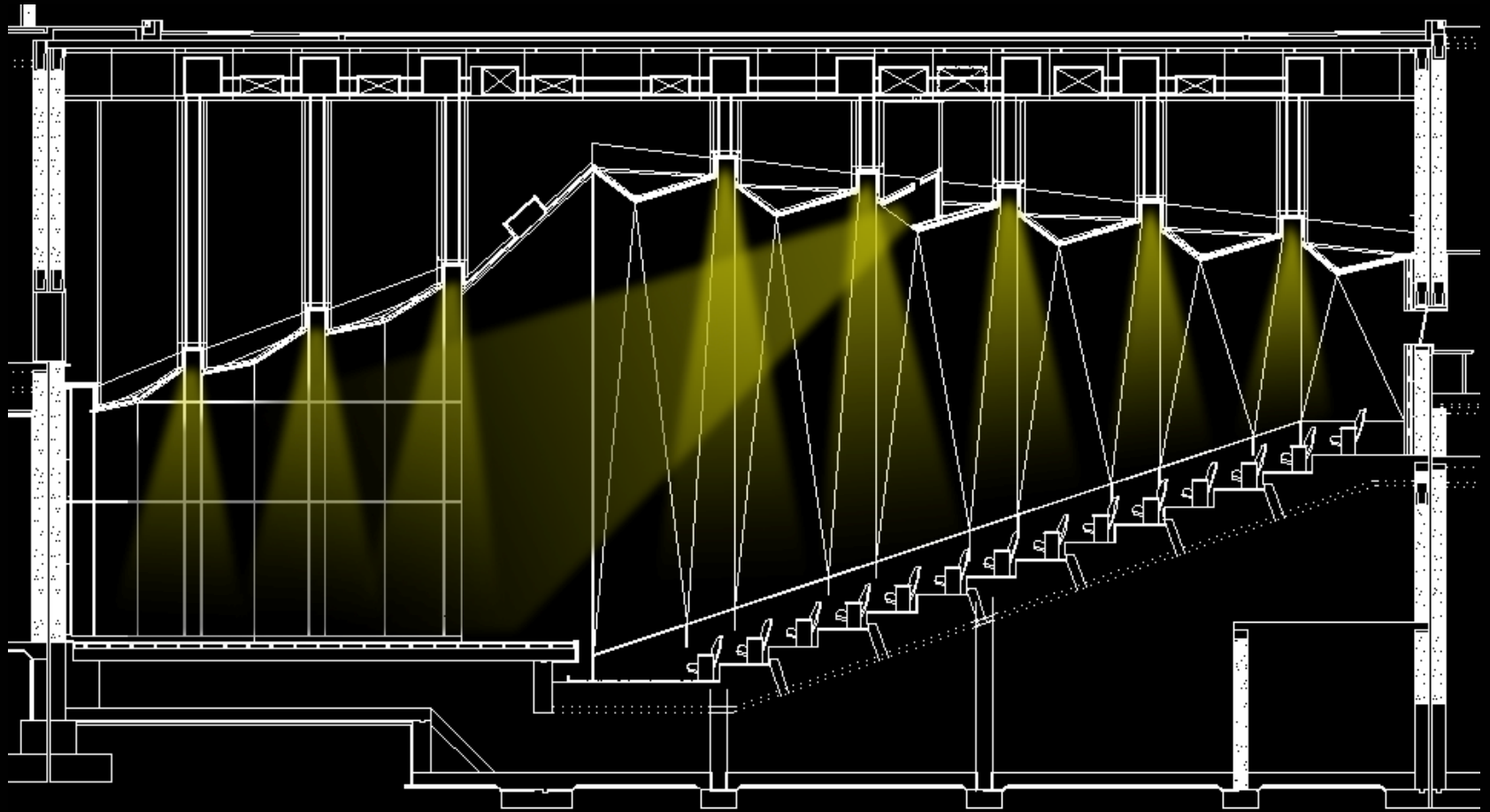


# Recital Hall



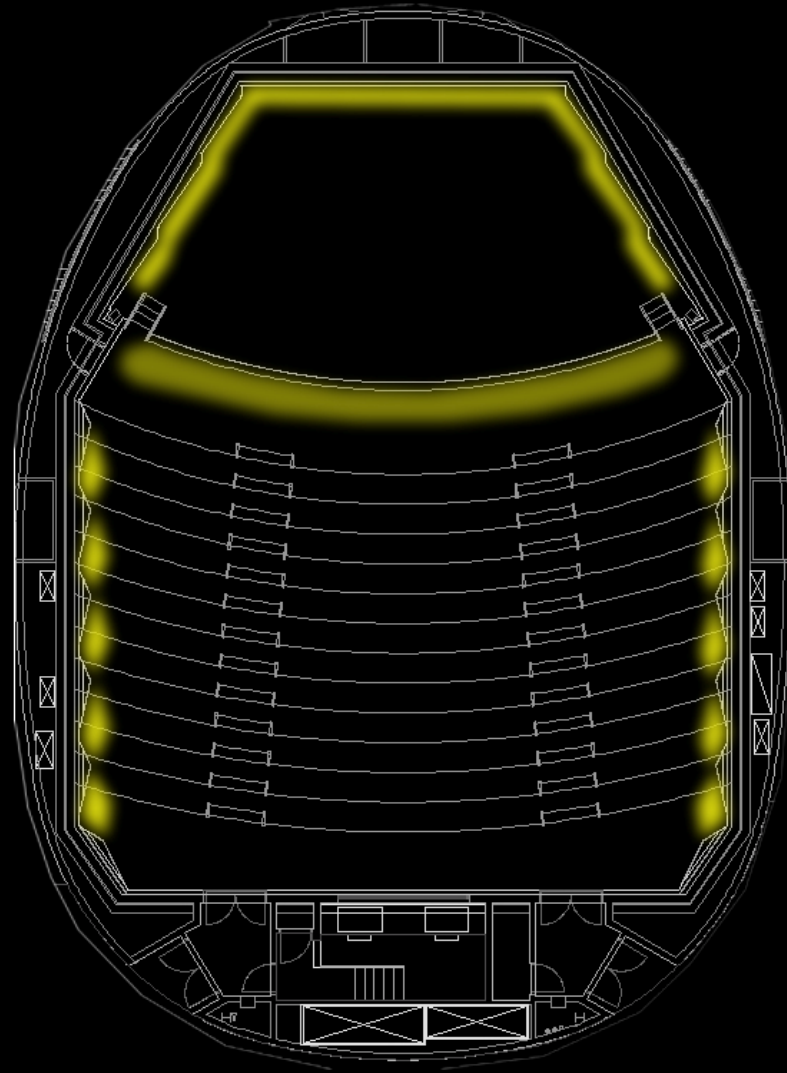


# Recital Hall



The Pennsylvania  
Academy of Music

# Recital Hall



# Grand Foyer

## **Space Characteristics:**

**Walls:** Oak veneer on Recital Hall walls  
Limestone columns  
White drywall on other walls

**Floor:** Dark blue carpeting

**Ceiling:** White drywall

**Glazing:** Two-story continuous east-facing glazing  
Windows along south wall

# Grand Foyer

## **Design Goals:**

Provide ambient light for meeting and gathering

Adjust light levels according to daylight availability

Feature wood through use of warmer color temperatures

Aid in circulation by varying illumination levels

Make surfaces visible through windows “glow” to draw attention from exterior

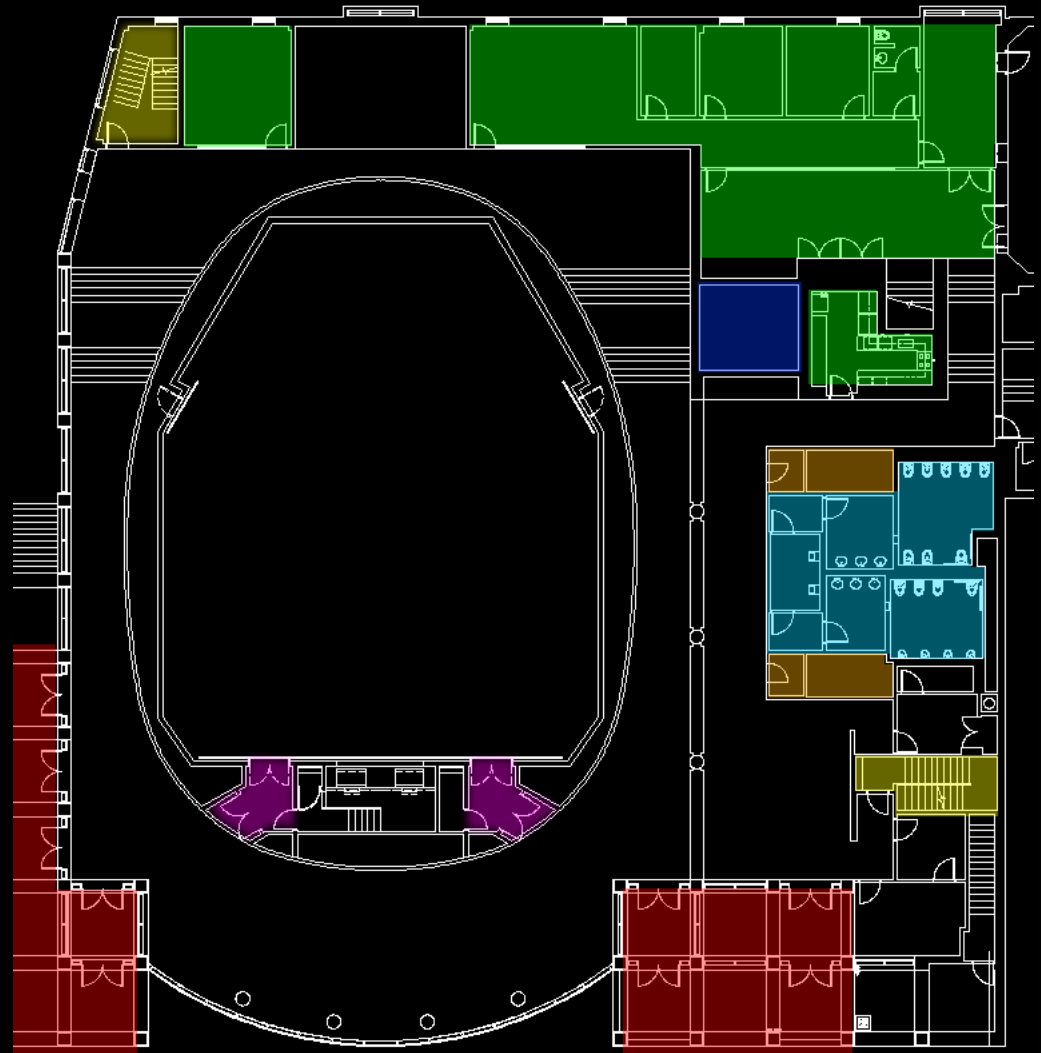
# Grand Foyer

## Concept



# Grand Foyer

- Building Entrance/Exit
- Recital Hall Entrance
- Restrooms
- Coat Check
- Elevator
- Stairwell
- Office

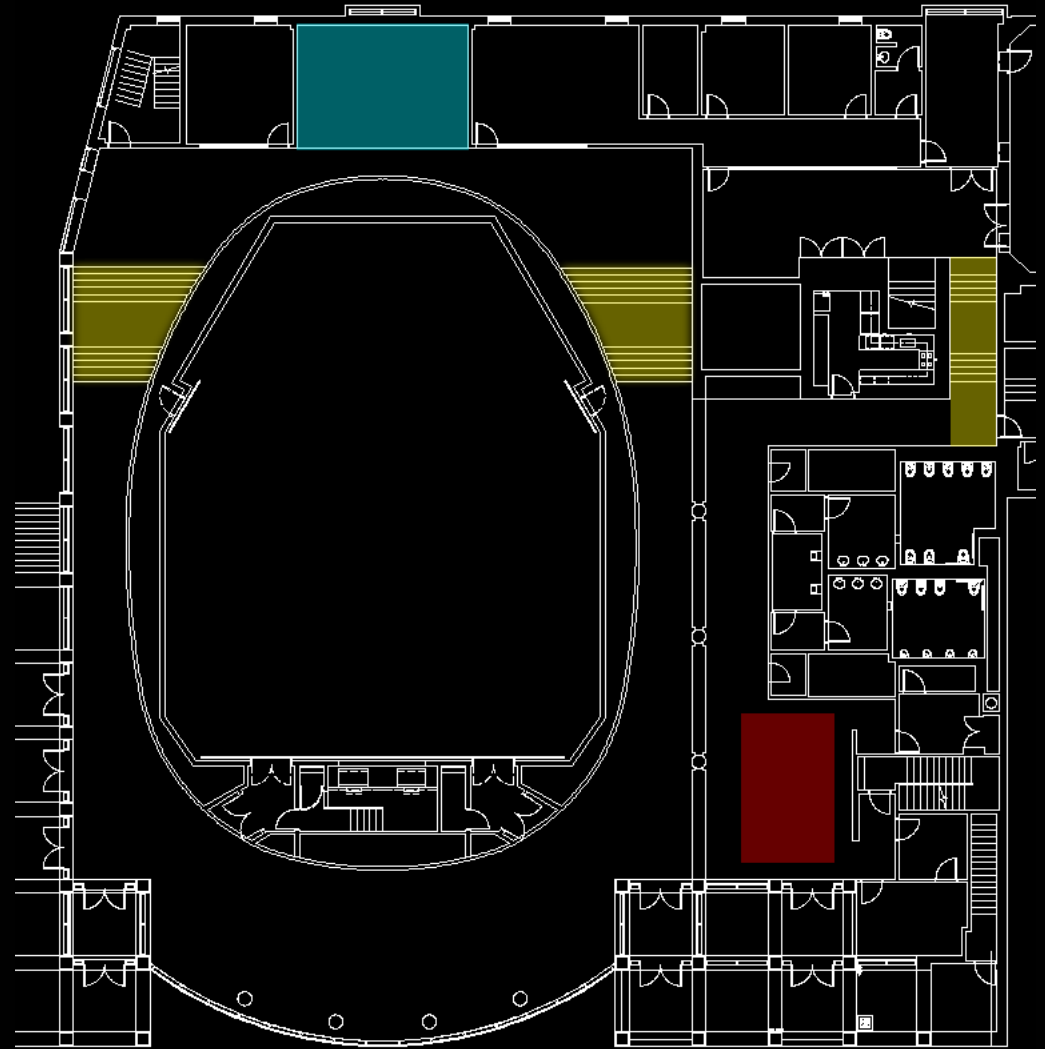


# Grand Foyer

 Information Desk

 Stairs

 Lounge

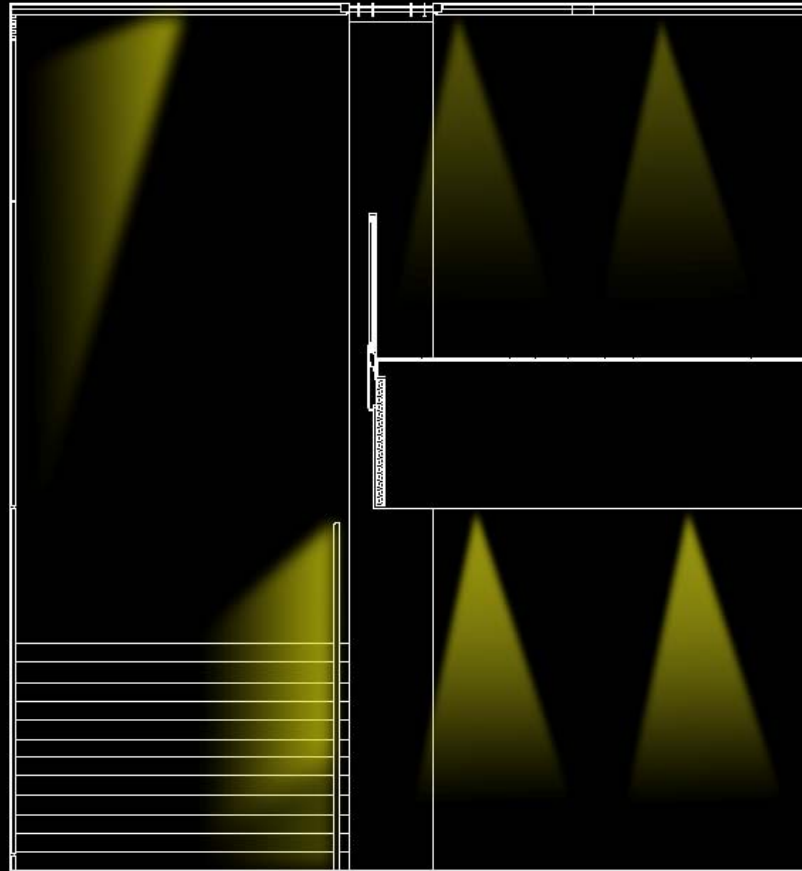


# Grand Foyer

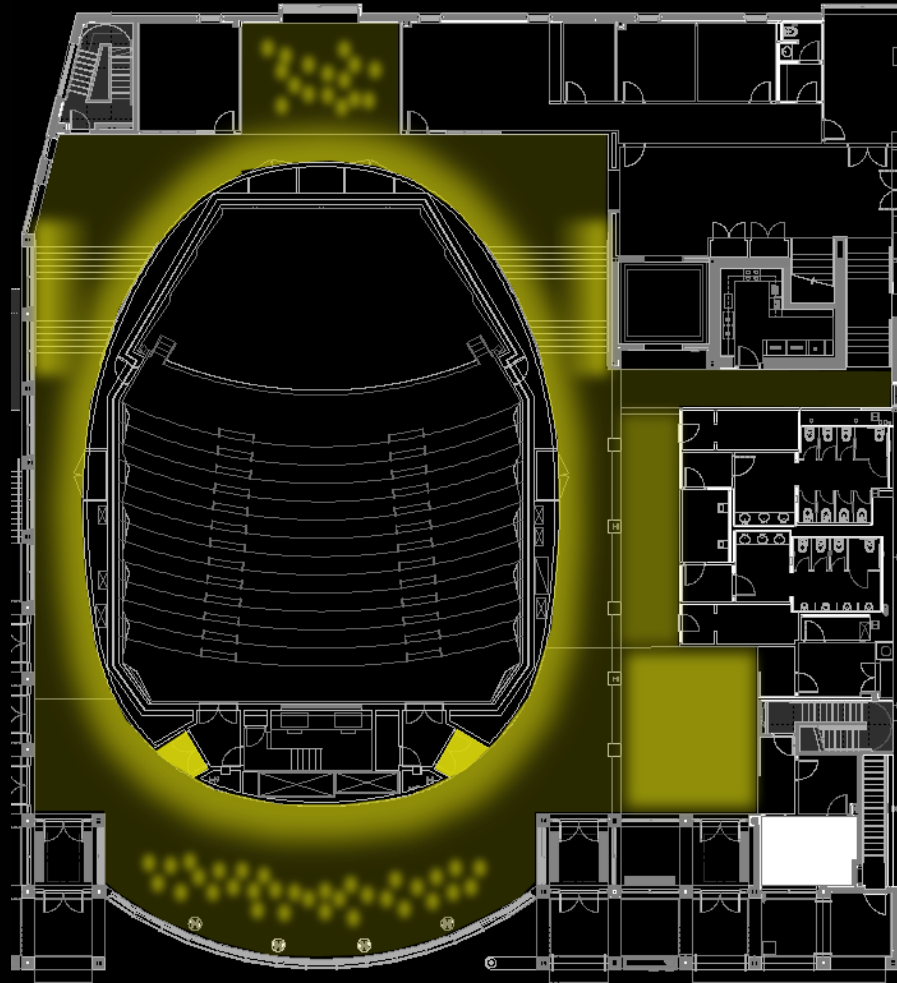




# Grand Foyer



# Grand Foyer



# Exterior

## **Space Characteristics:**

- Façade:** Limestone columns  
“Glowing” surfaces behind glass
- Ground:** Light concrete sidewalk and steps  
Planters

# Exterior

## **Design Goals:**

Draw attention to the Academy

Create inviting entrance to building

Provide even illumination around entrances for safety and facial rendering

Pair glowing surfaces behind glass atrium with glowing volumes surrounding entrances

Minimize light trespass and light pollution

# Exterior

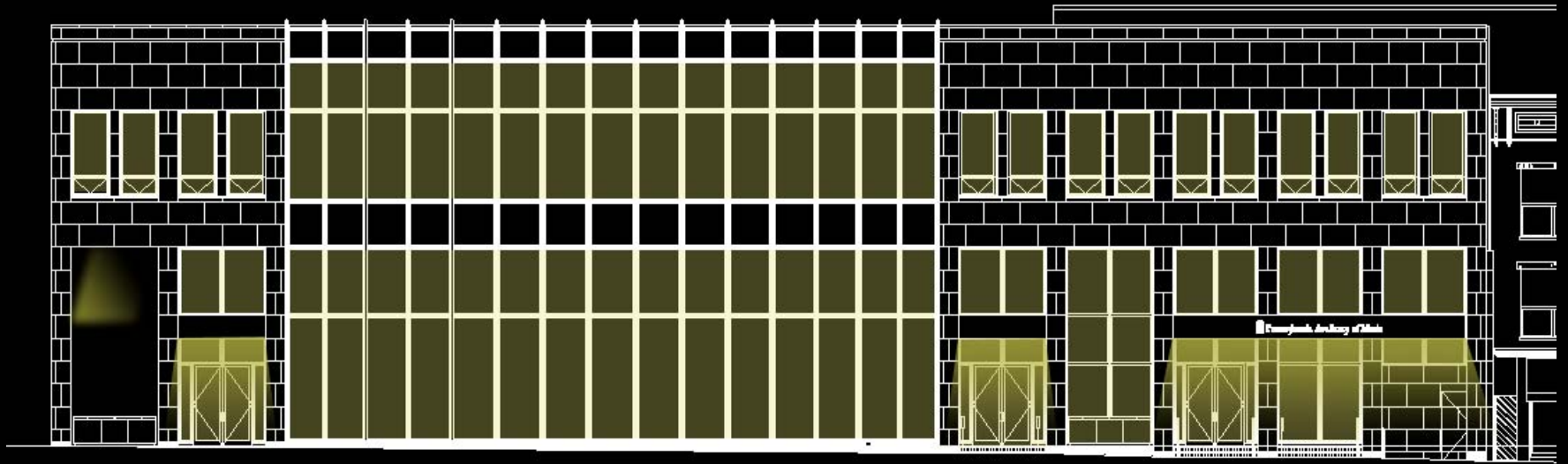
## Concept



# Exterior



# Exterior



# Library

## **Space Characteristics:**

**Walls:** White drywall and light oak millwork  
Windows overlooking Grand Foyer

**Floor:** Dark green carpeting

**Ceiling:** White drywall,  
higher ceiling height over seating area



# Library

## **Design Goals:**

Create atmosphere suitable for inspection and reading

Evenly illuminate work surfaces and shelves

Reduce shadowing on surfaces by providing ample ambient light

Allow for higher illumination levels through localized task lighting

# Library

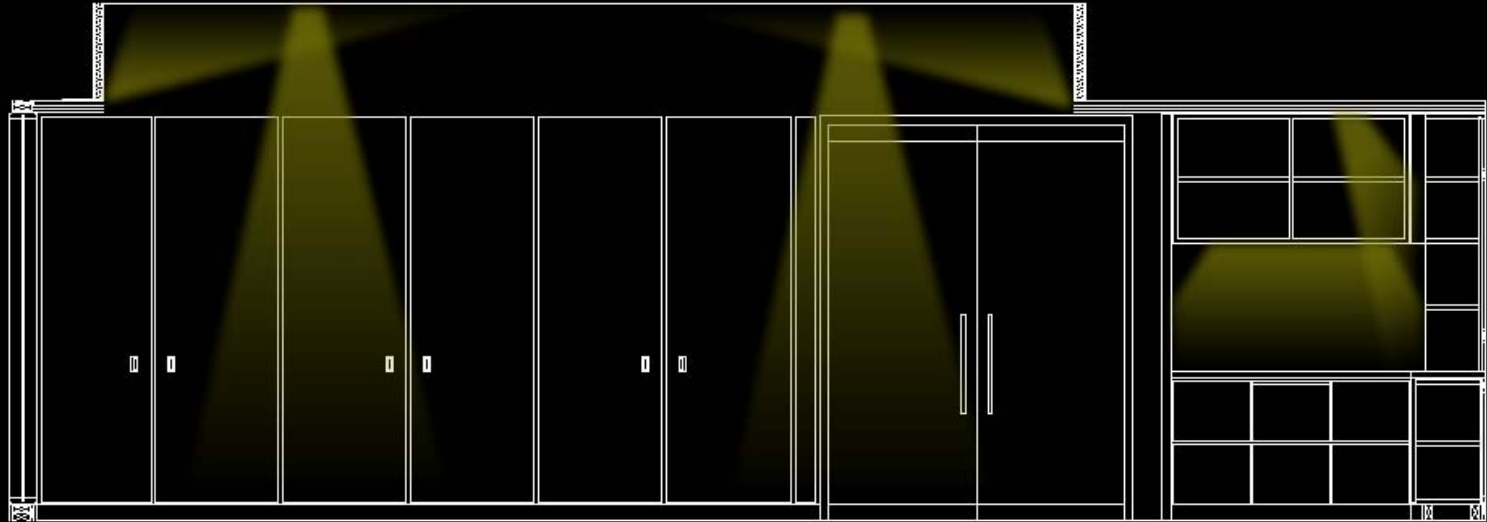
## Concept



# Library



# Library



# Roof Plaza

## **Space Characteristics:**

**Walls:** Limestone columns

Windows looking into hallway on 3 sides, and lounge and instruction space on the fourth

**Ground:** Light colored pavers, leveled and raised above slightly sloped drainage surface

# Roof Plaza

## **Design Goals:**

Enhance evening gathering capabilities of the space

Minimize light trespass and pollution

Evenly illuminate space and architecture

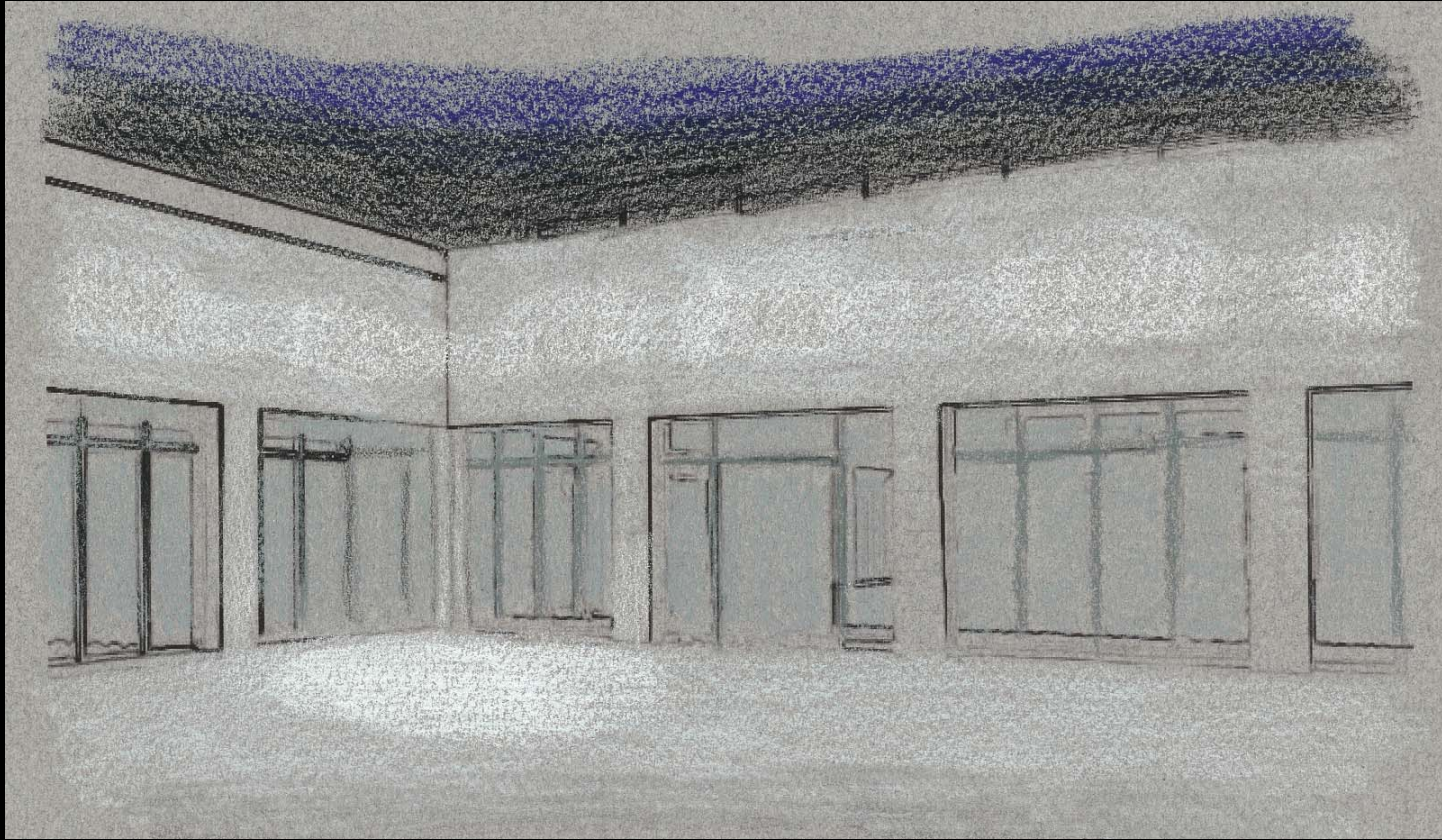
Provide capability of outdoor concert venue

# Roof Plaza

## Concept

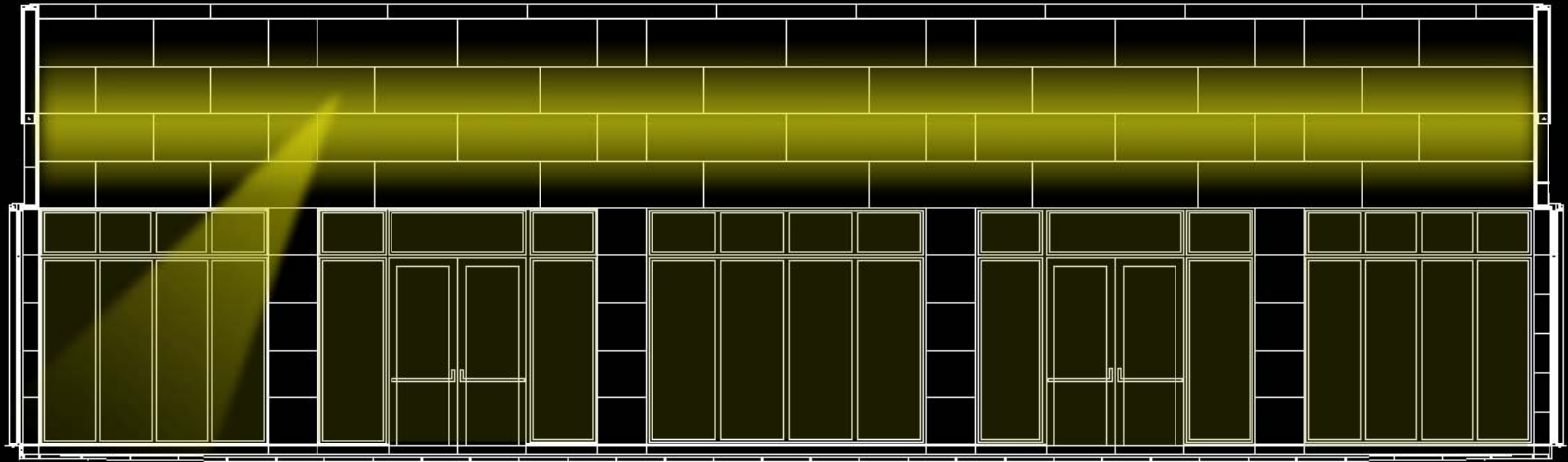


# Roof Plaza





# Roof Plaza





# The Pennsylvania Academy of Music

Thank you.

Questions? Comments?