

# HARRY RANSOM HUMANITIES RESEARCH CENTER

## Additions and Renovations

MICHAEL ANTHONY LOMBARDI

Lighting/Electrical Emphasis

Dr. Richard Mistrick, Advisor

The Pennsylvania State University

# HARRY RANSOM HUMANITIES RESEARCH CENTER

## Building Background

University of Texas at Austin Campus

Lake Flato Architects, Inc.

- Originally Constructed 1972
- Renovated 2001-2003
- \$9 million Project Cost
- 46,360 ft<sup>2</sup> (Renovated 1<sup>st</sup> and 2<sup>nd</sup> floors)
- 7 Above-Grade Floors and Basement

Gallery                      Artifact Preservation  
Cultural Center          Performance Space  
Historic Archives



36 Million Literary Manuscripts    1 Million Rare Books    5 Million Photographs    100,000 Works of Art

# PRESENTATION OUTLINE

## TOPICS

### Lighting Depth

---

- Entrance Lobby

  - Lighting Controls Integration

  - Bible and First Photograph Lighting

- North/South Corridors

- Stair Hall, Theatre Lobby

- Prothro Theatre

- Prothro Gallery

- Exterior/Site Lighting

### Electrical Depth

---

- 120/208V to 277/240V Distribution

- Panelboard Redesign

- Copper to Aluminum Feeder Cost Comparison

- Coordination Study

**Acoustics Breadth** Prothro Theatre

**Architectural Breadth** Prothro Gallery

**Summary**

# DESIGN ELEMENTS

Create a lighting system that compliments the architecture of the space and enhance the appearance of the collections.

## Visible Luminaires

---

### Simple Geometry



# DESIGN ELEMENTS

Create a lighting system that compliments the architecture of the space and enhance the appearance of the collections.

## Lamp Selections

---

### General Illumination



CFL



Linear Fluorescent



Metal Halide



### Accent and Artwork

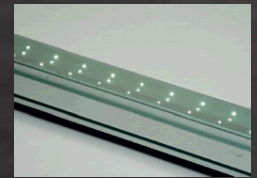


AR-111

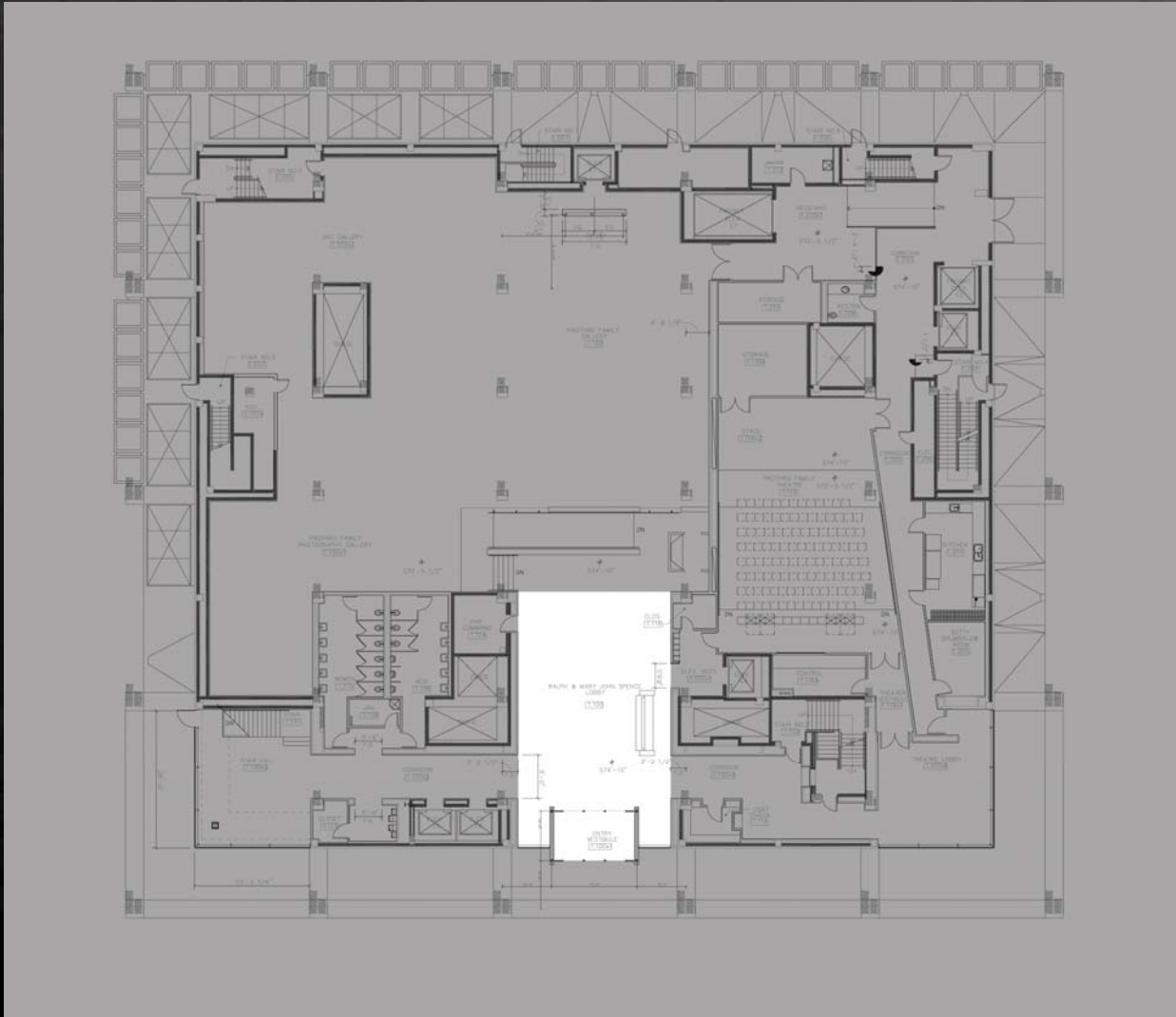


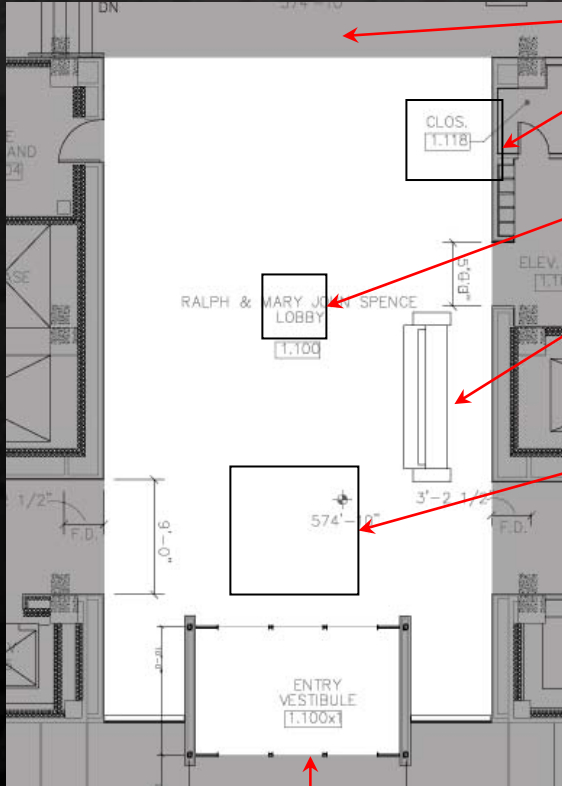
MR-16

### Special Lighting



LED and Fiber Optic





To Gallery

First Photograph Display

Gutenberg Bible

Security Desk

Open to Above

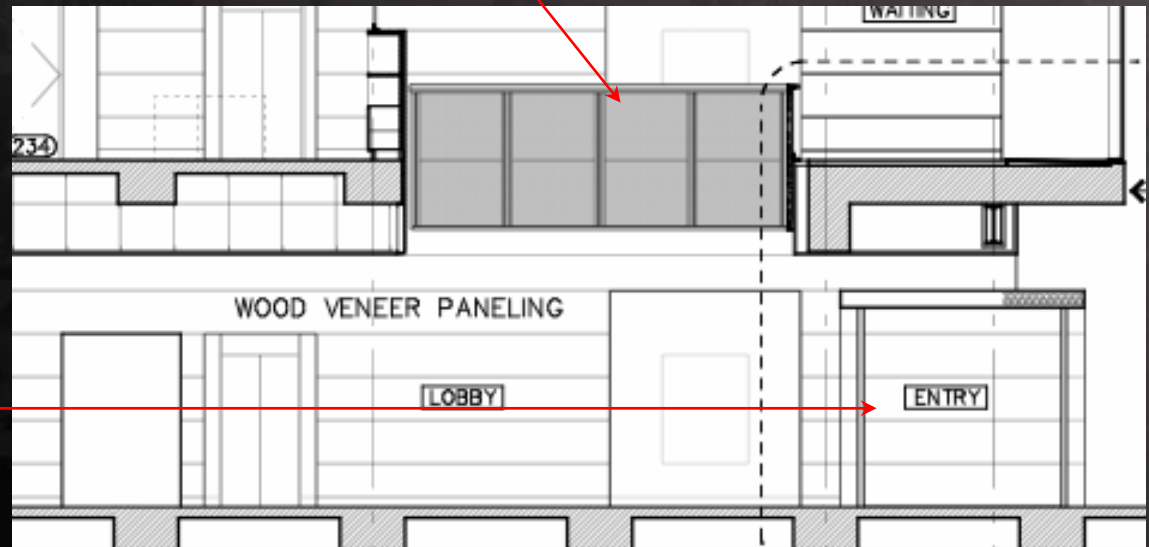
## DESIGN GOALS

Create a Warm Environment

Highlight Wood Walls

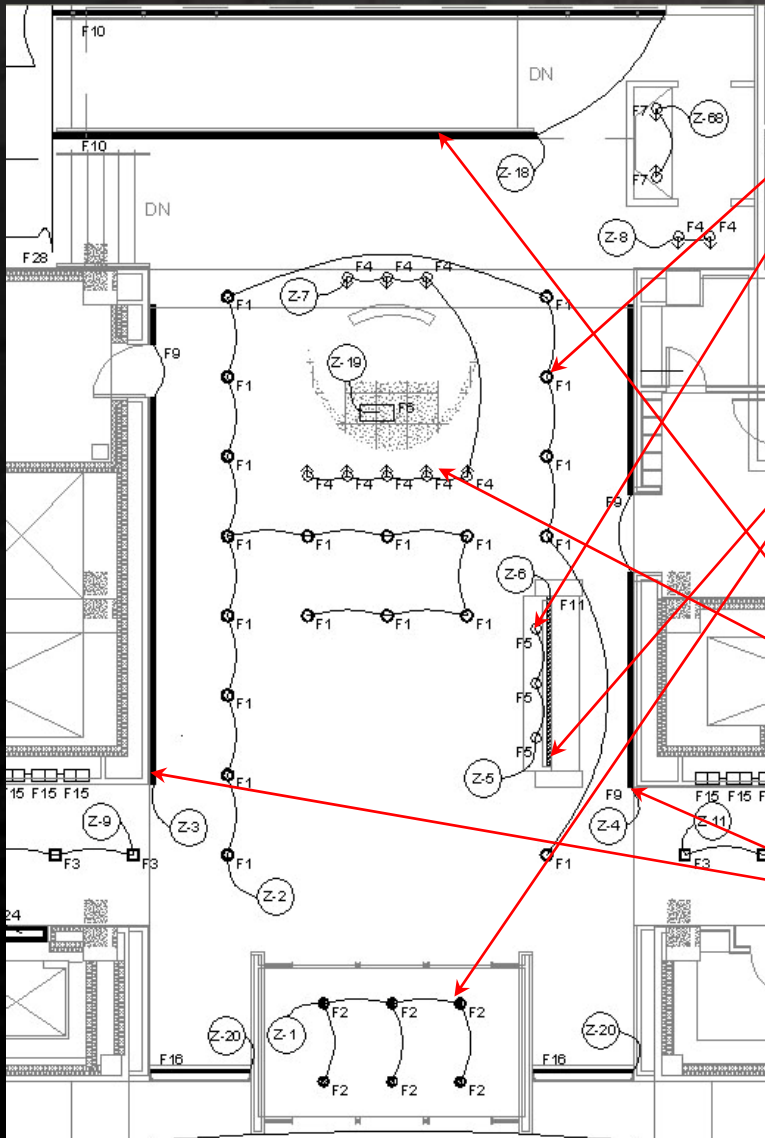
Bring Attention to Bible Display

Entrance  
Vestibule and  
Signature Wall



# LOBBY DESIGN

# Lighting Depth

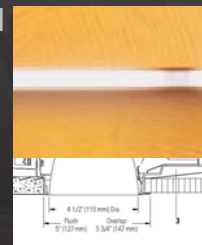


F15



Fully recessed halogen  
6" aperture  
50 W

F21



Fully recessed  
undercabinet dimming  
compact fluorescent  
6" aperture  
18 W

F10



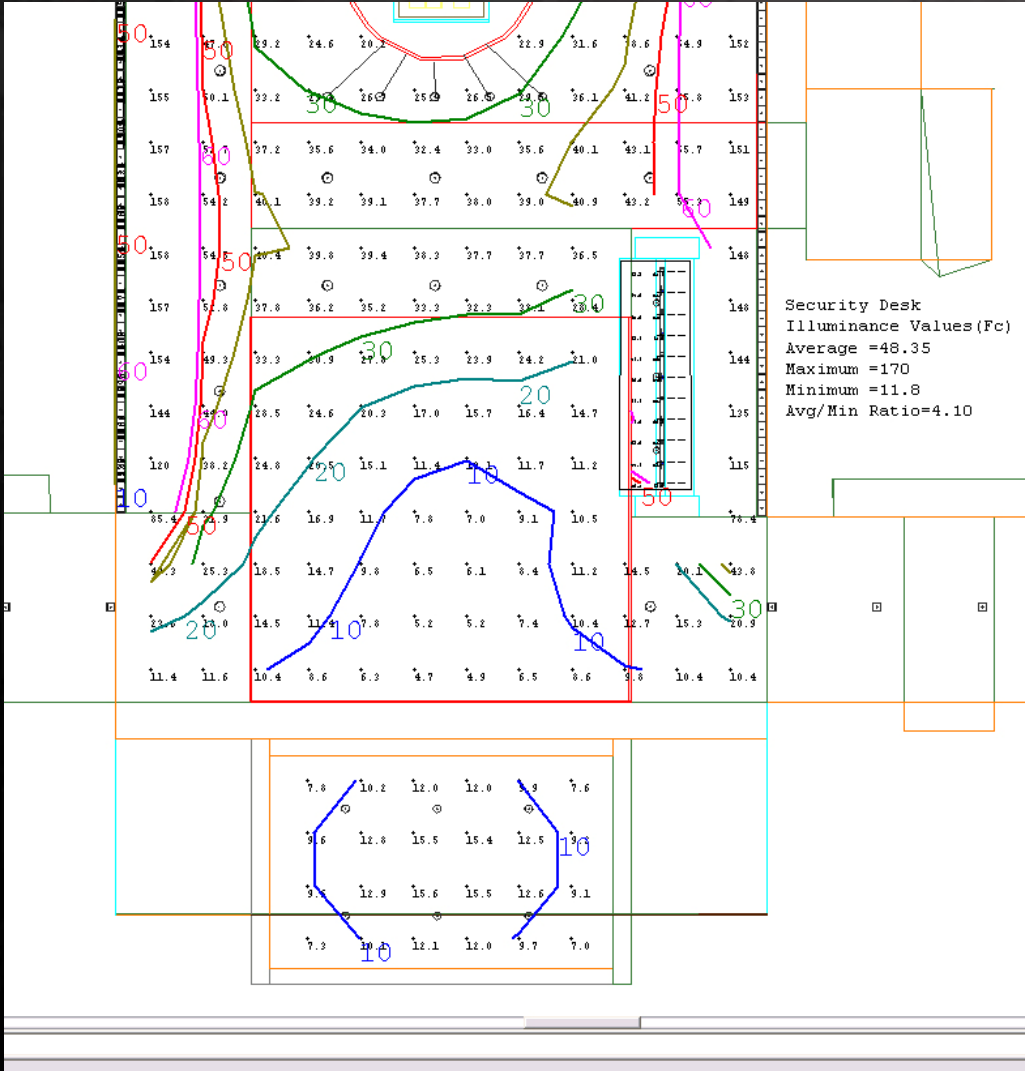
Dyson assetic  
adjustable recessed light  
aperture downlight

F9



Cove recessed ceramic  
metal halide wall grazer





## Calculations

Average illuminance

**10 Fc Vestibule Floor**

**35 Fc Lobby Floor**

**48 Fc Security Desk**

**55 Fc Wood Walls**

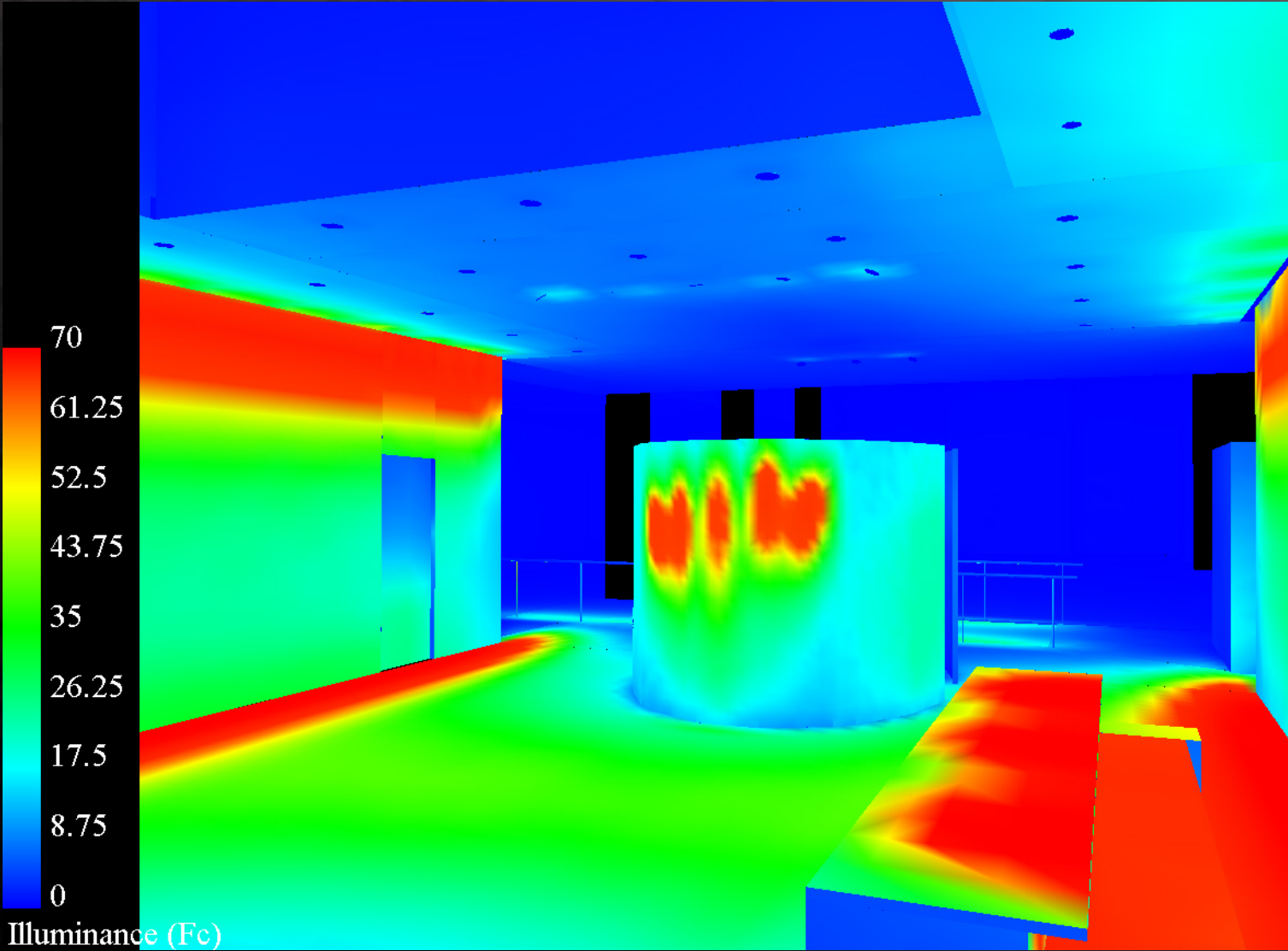
**Gradual increase in light intensity from 10 Fc (vestibule) to 35 Fc (Lobby)**

## Power Density

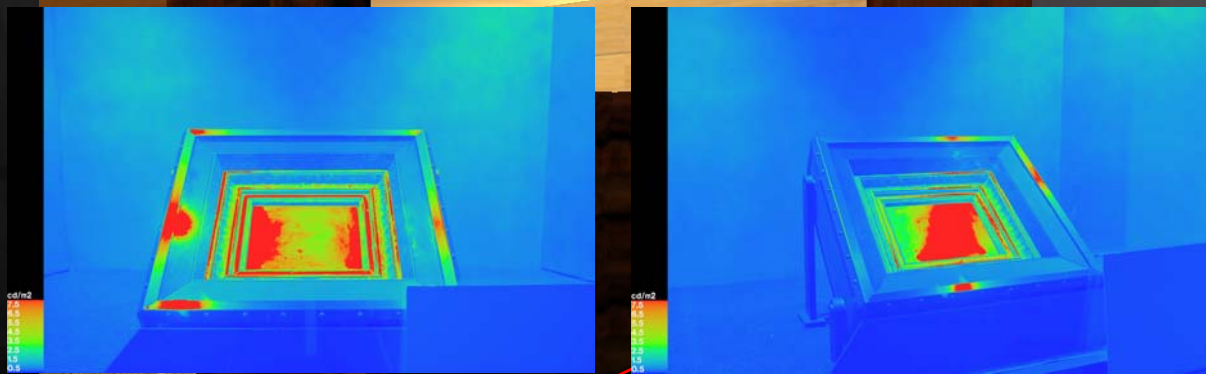
2.13 W/sq.ft. < ASHRAE (1.3 + 1.0 W/sq.ft)

**75% reduction in energy consumption**

**(8.55 W/sq.ft. existing conditions)**

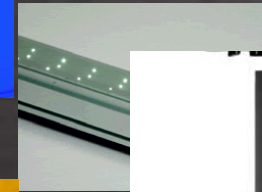


## Special Lighting – Not Discussed in Detail



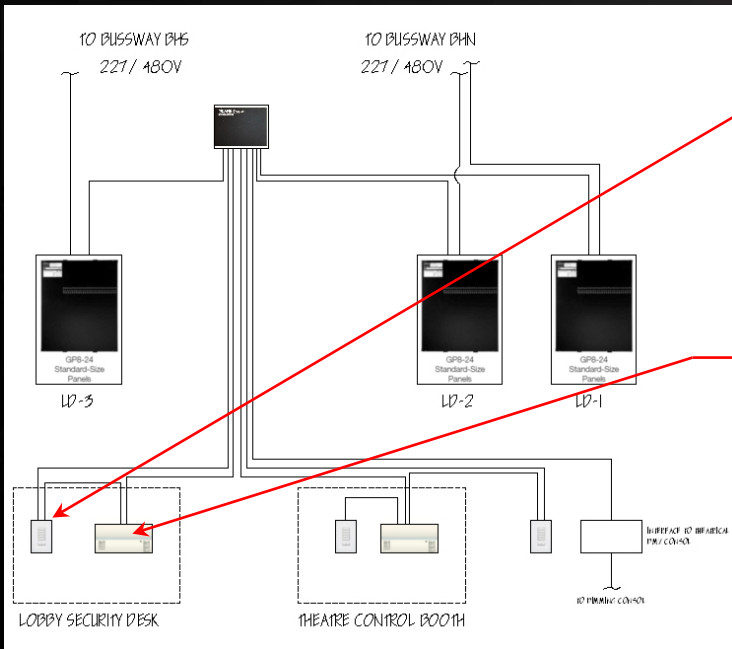
Lighting Lamp Comparison  
First Photograph Lighting

HDR Imaging  
Optic Vs. LED Fixture  
Fixture Selection



CONTROL DEVICE	DEVICE	DESCRIPTION	ENGRAVING	CONNECTED ZONE NUMBER
LC-1	Control Interface with 1-gang Scene Pad	Location: Security Desk		
	4 Scene + Off + L/R			
	1	Lobby High	HIGH	All Zones except Z-6, Z-18, Z-20
	2	Lobby Low	LOW	All Zones except Z-6, Z-18, Z-20
	3	Bible Display Toggle On/Off	BIBLE	Zone Z-19
	4	First Photo Display Toggle On/Off	FIRST PHOTO	Zone Z-68
	5	All Zones Off	OFF	All zones
	7	Lower/Raise	▽△	All selected zones
CONTROL DEVICE	DEVICE	DESCRIPTION	ENGRAVING	CONNECTED ZONE NUMBER
LC-2	1-gang Scene Pad	Location: Security Desk		
	4 Scene + Off + L/R			
	1	Guest counter area	COUNTER HIGH	Z-5
	2	Guest counter area	COUNTER LOW	Z-5
	3	Workdesk undercabinet lighting	TASK HIGH	Z-6
	4	Workdesk undercabinet lighting	TASK LOW	Z-6
	5	All Zones Off	OFF	All zones
	7	Lower/Raise	▽△	All selected zones

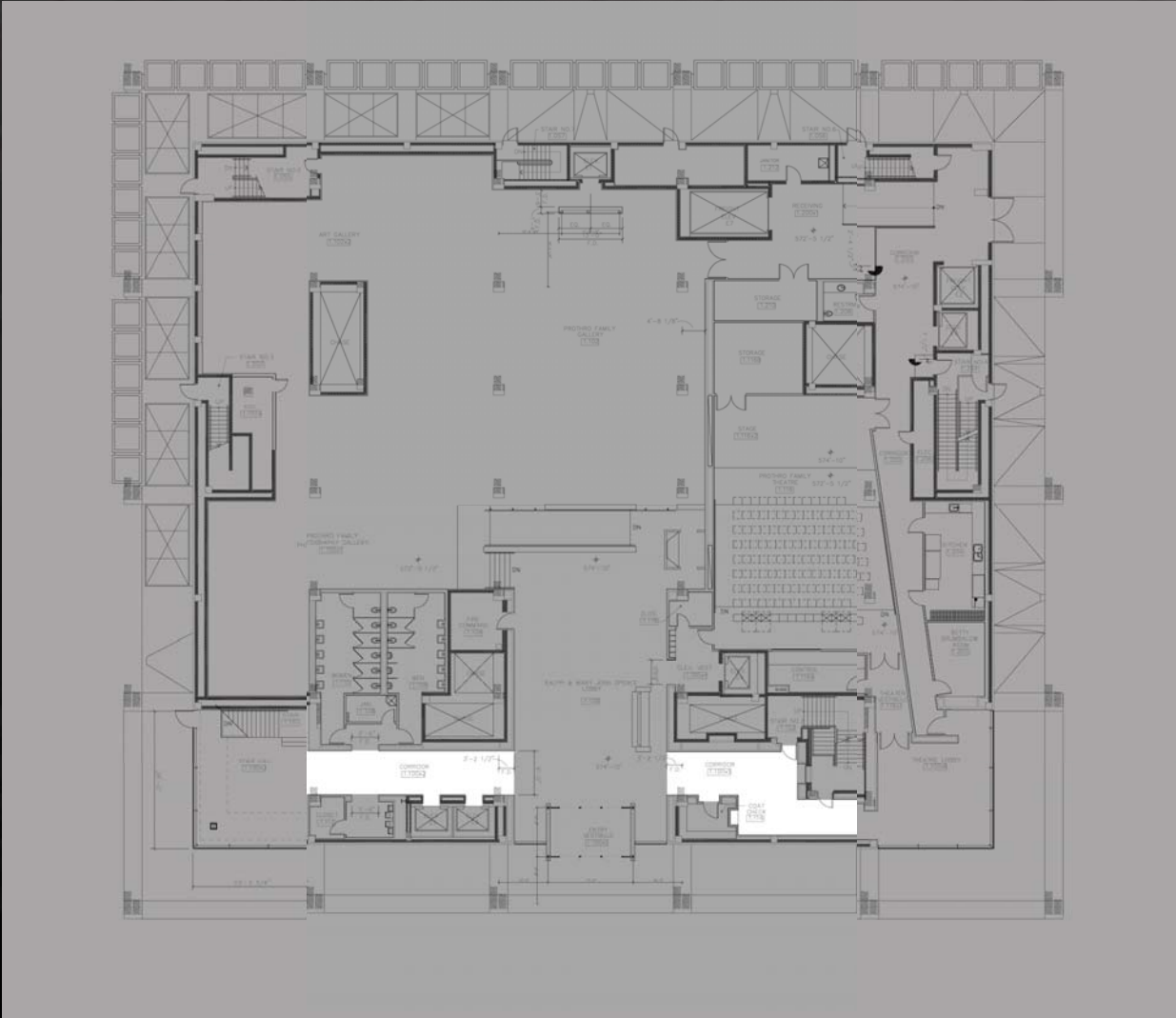
Centralized dimming/switching system with anatomical timeclock.



Simple button controls at lobby security desk.



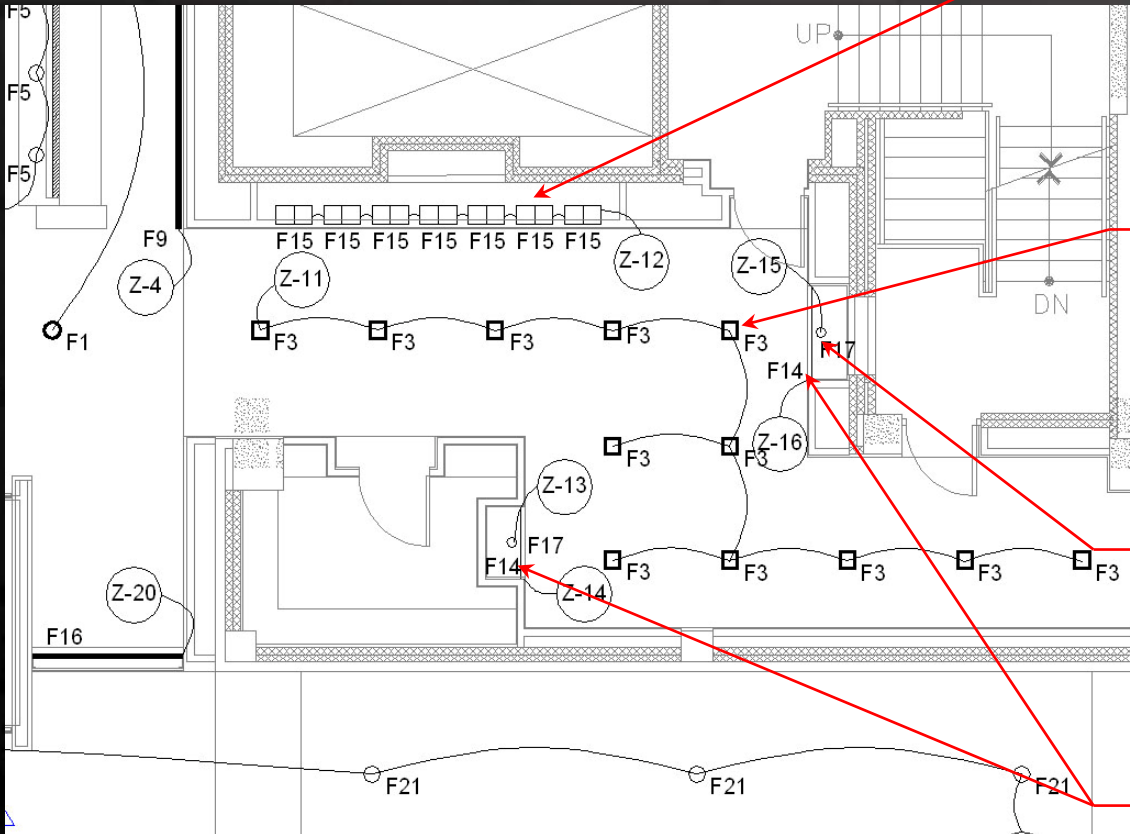
Ability to create “phantom” devices addressable via touch-screen.



# NORTH/SOUTH CORRIDOR

# Lighting Depth

## North Corridor



F15



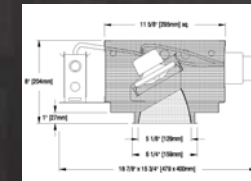
Adjustable  
accent halogen  
2-lamp fixture  
150 W

F3



Fully recessed  
5-1/2" square  
aperture  
downlight  
26 W

F17



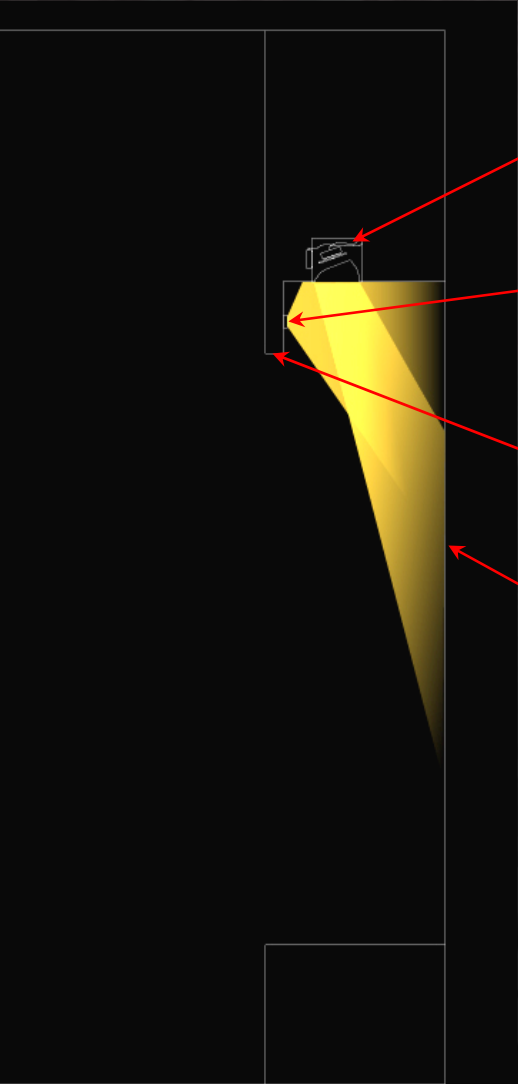
Fully recessed  
adjustable  
accent AR-111  
downlight  
75 W

F14

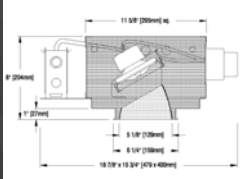


Xenon strip light  
5 W/lamp

## Art Niche



F17



8 Degree AR-111 Lamp

F14

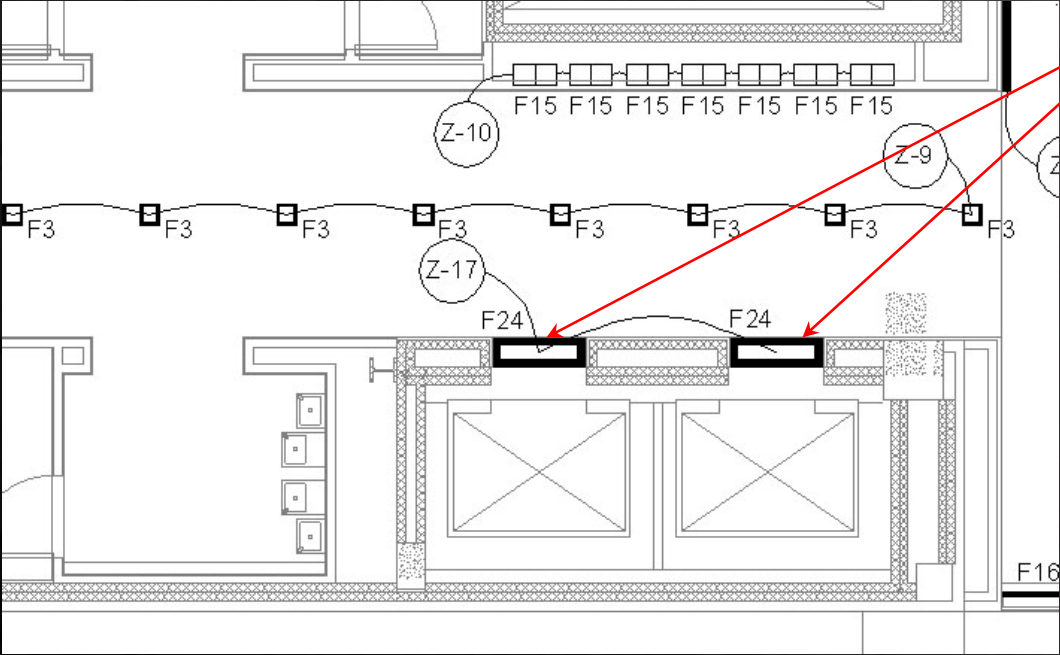


Xenon Festoon Lamp

Valance

Painting Reference

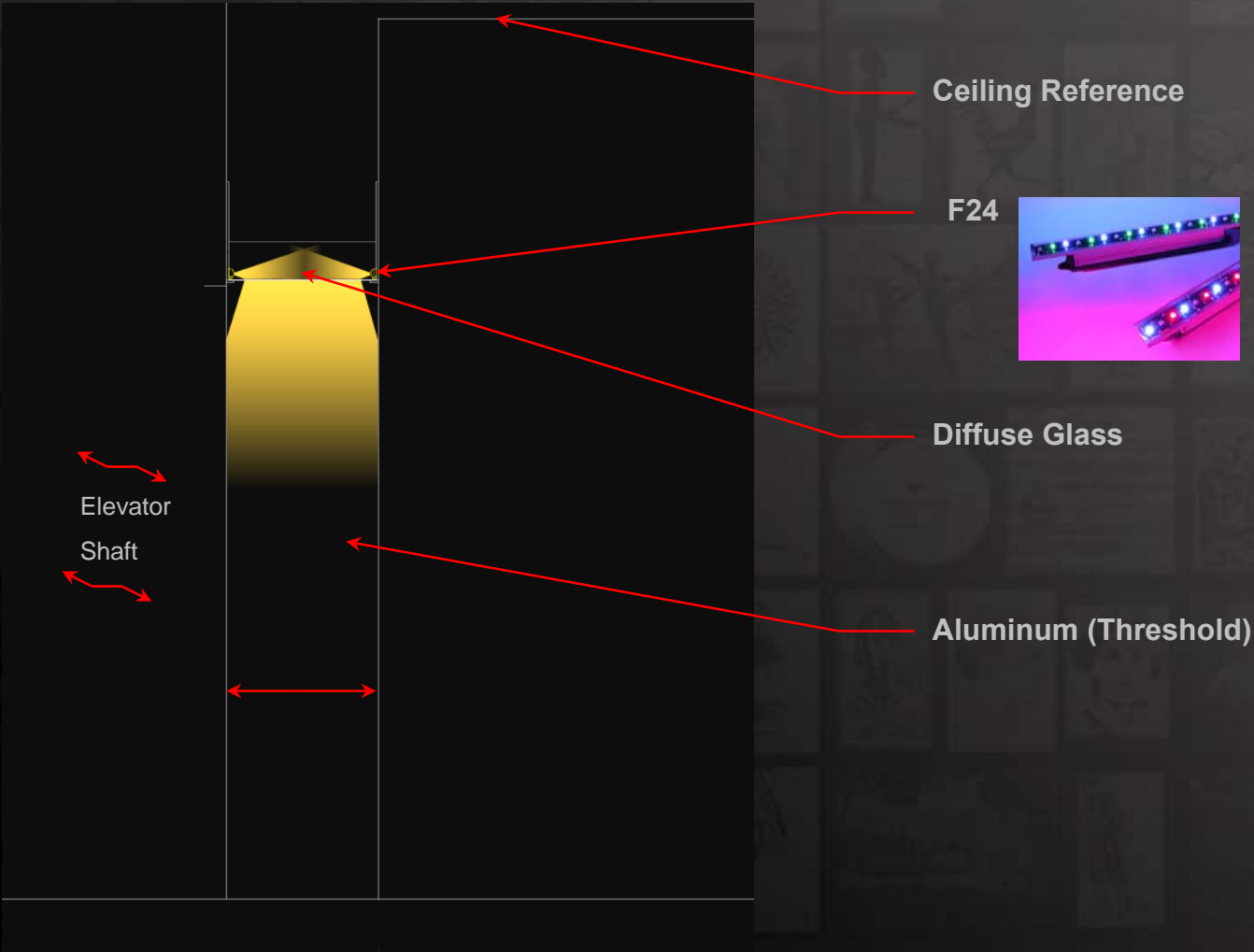
## South Corridor



**Custom RGB LED fixture recessed in elevator threshold**



## Elevator Lighting



## North Corridor Rendering



### Power Density

0.8 W/sq.ft.  
< 1.2 W/sq.ft. ASHRAE

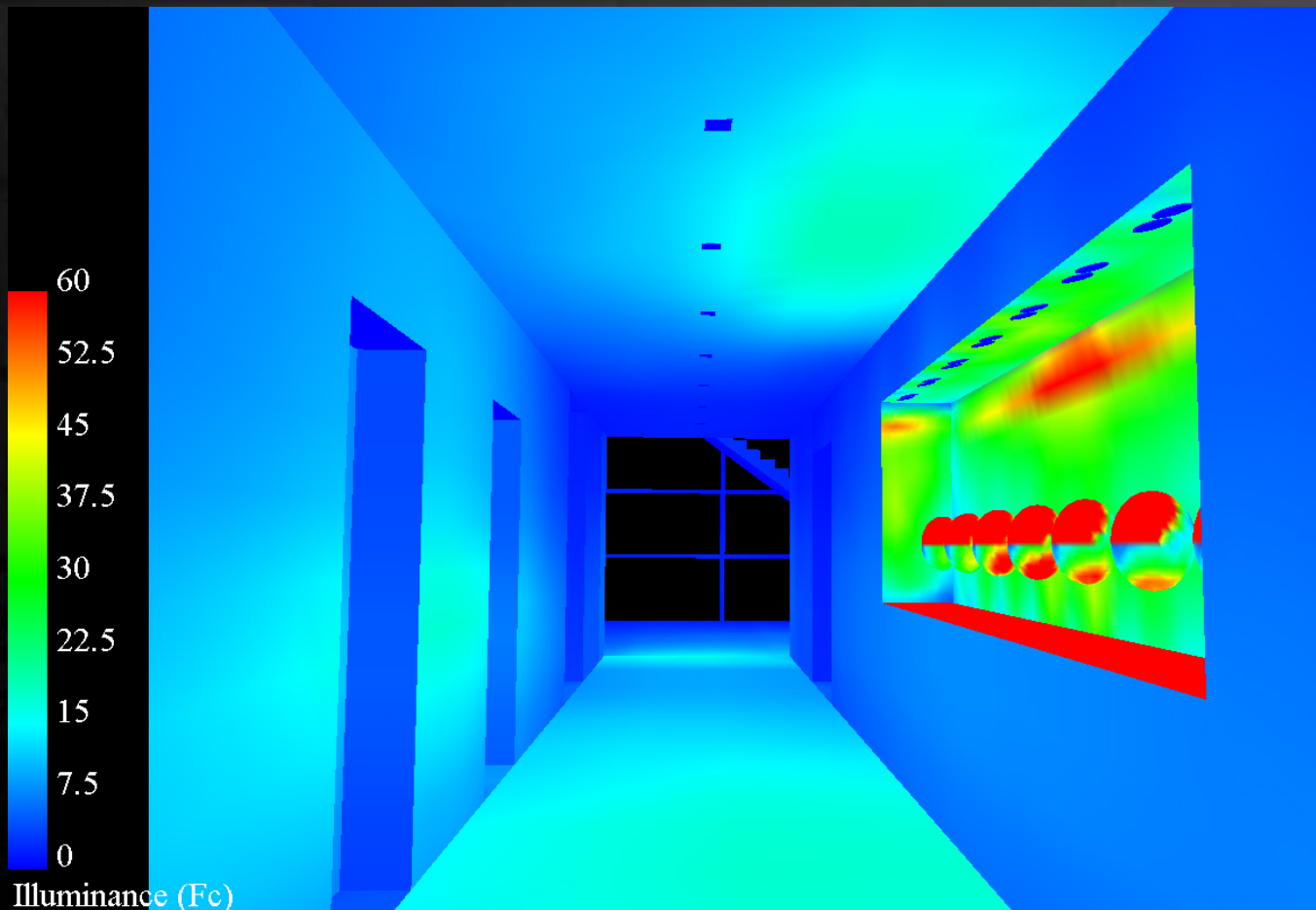
## South Corridor Rendering



### Power Density

0.8 W/sq.ft.  
< 1.2 W/sq.ft. ASHRAE

## South Corridor Pseudo Image



### Power Density

0.8 W/sq.ft.  
< 1.2 W/sq.ft. ASHRAE

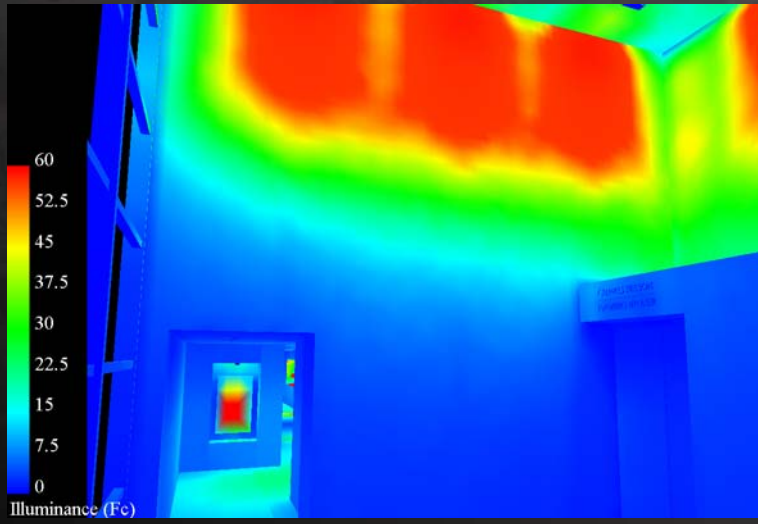
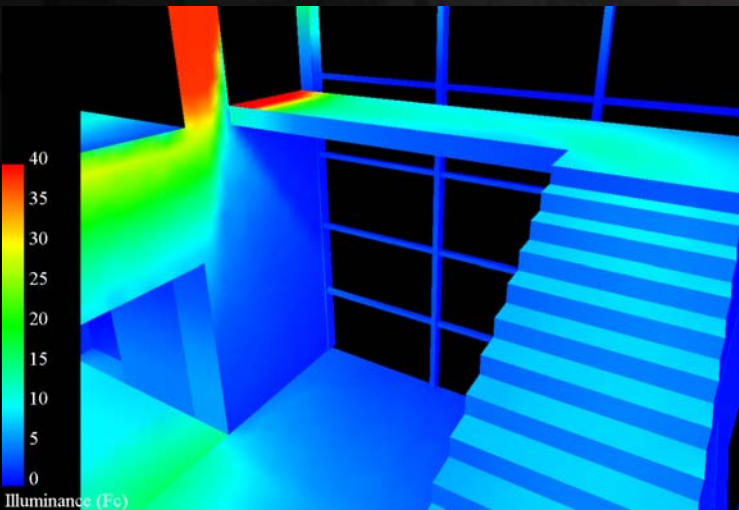
### Average Illuminance

15.5 Fc Floors

26.1 Fc Sculpture Cove Wall

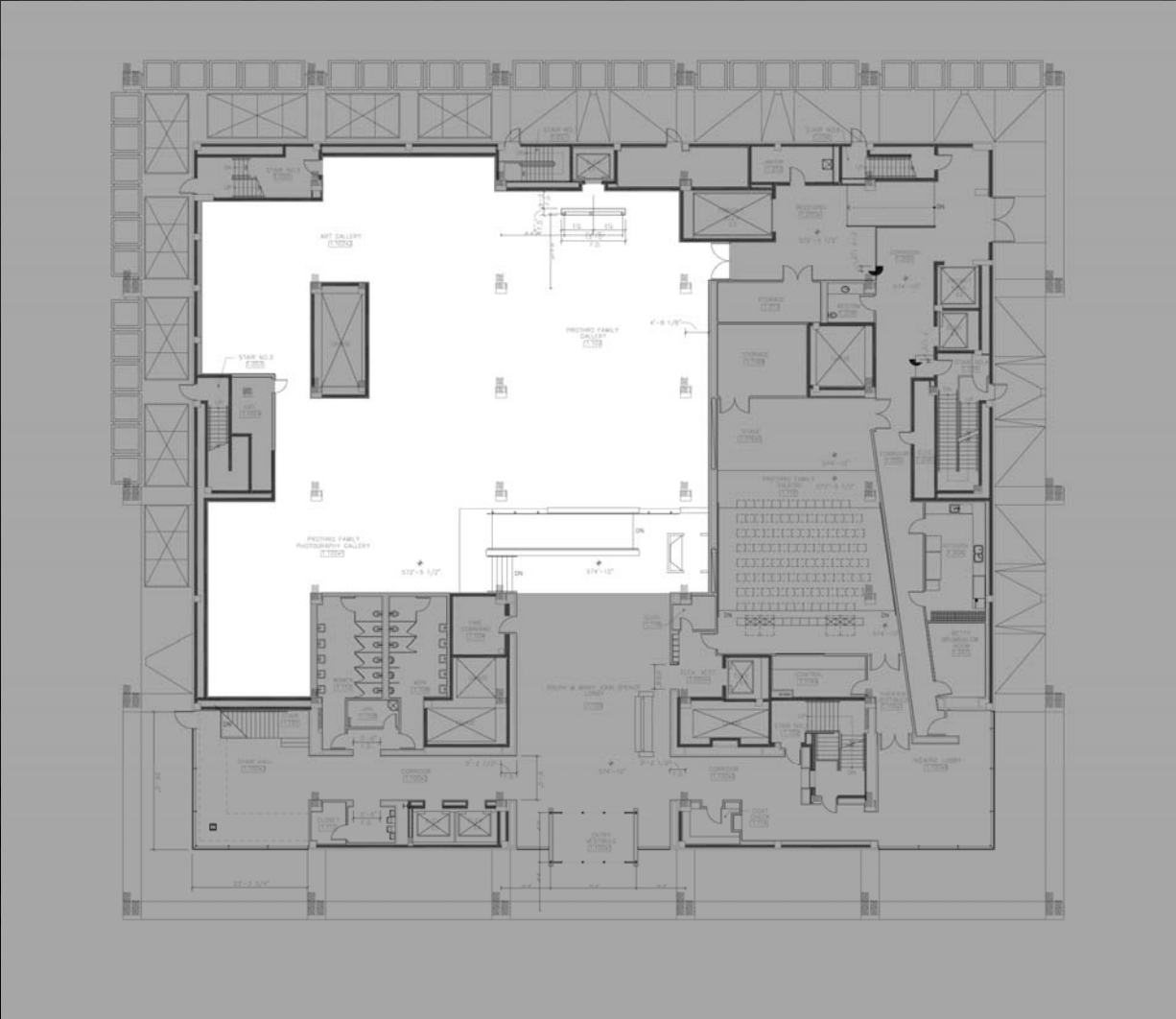
45.6 Fc Art Niche Painting

Stair Hall and Theatre Lobby

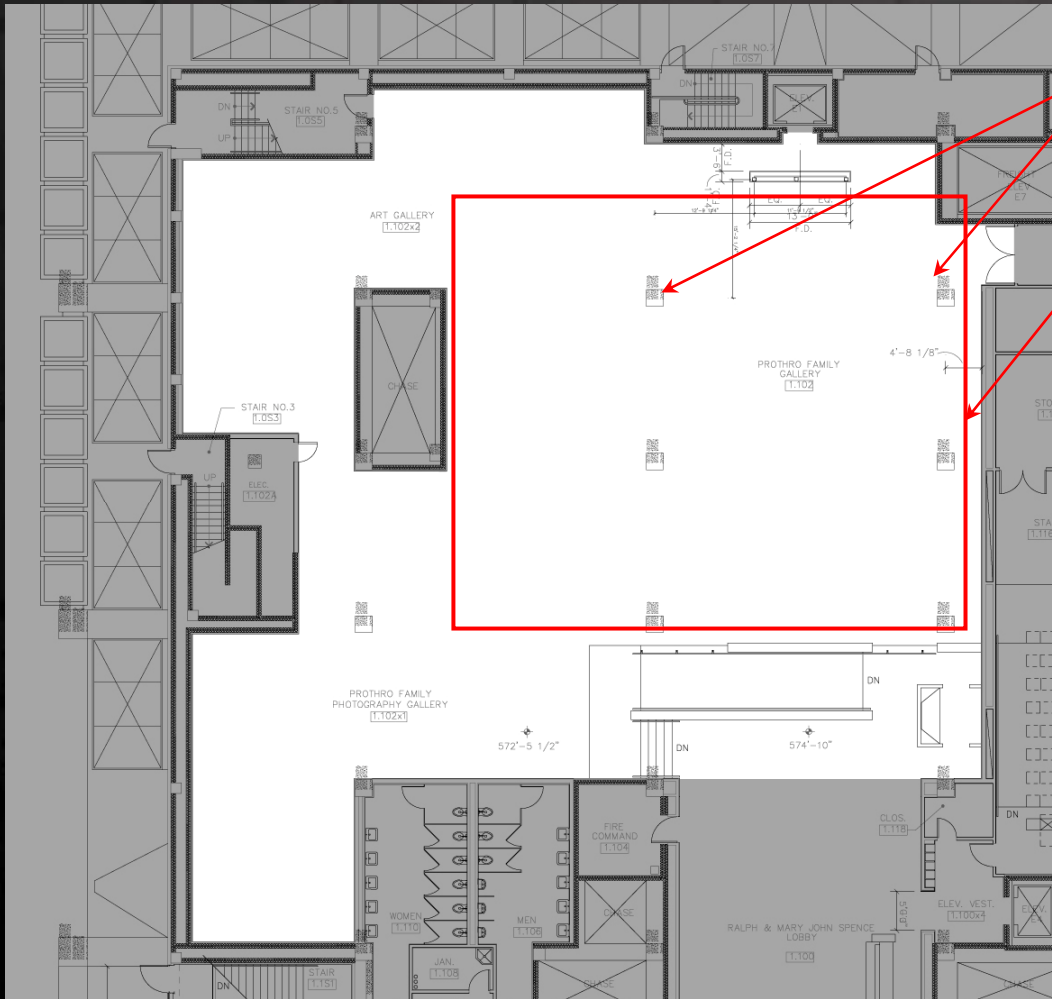


# PROTHRO FAMILY ART GALLERY

# Lighting Depth



## North Corridor



Exposed Columns

Redesigned Ceiling and room partitions (Architecture Breadth)

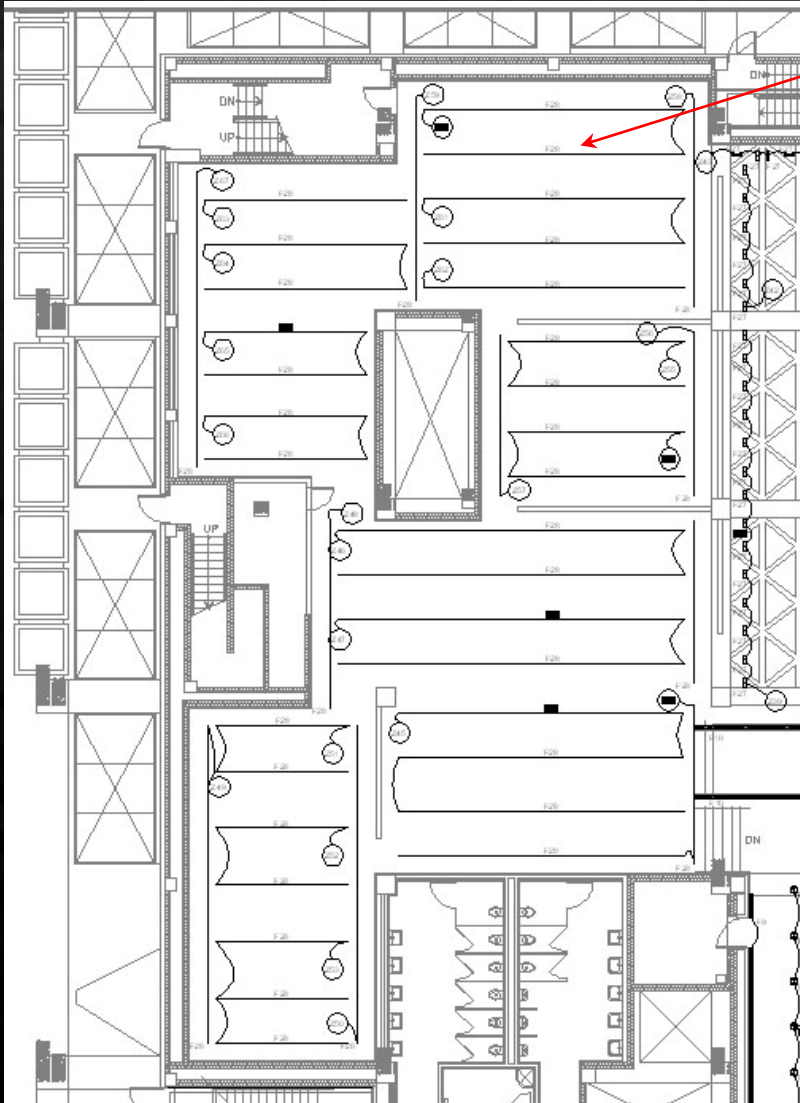
## DESIGN GOALS

- Create a flexible lighting system
- Provide low maintenance fixtures
- Lighting system secondary to artwork
- Minimum 2:1 contrast ratio on art

# PROTHRO GALLERY

## Lighting Depth

South Wing



F28



**Bus Track System**  
277 V Recessed track for power, communication devices, and lighting fixtures.

F29



**Track mounted MR-16 halogen accent light**  
50 W

F30



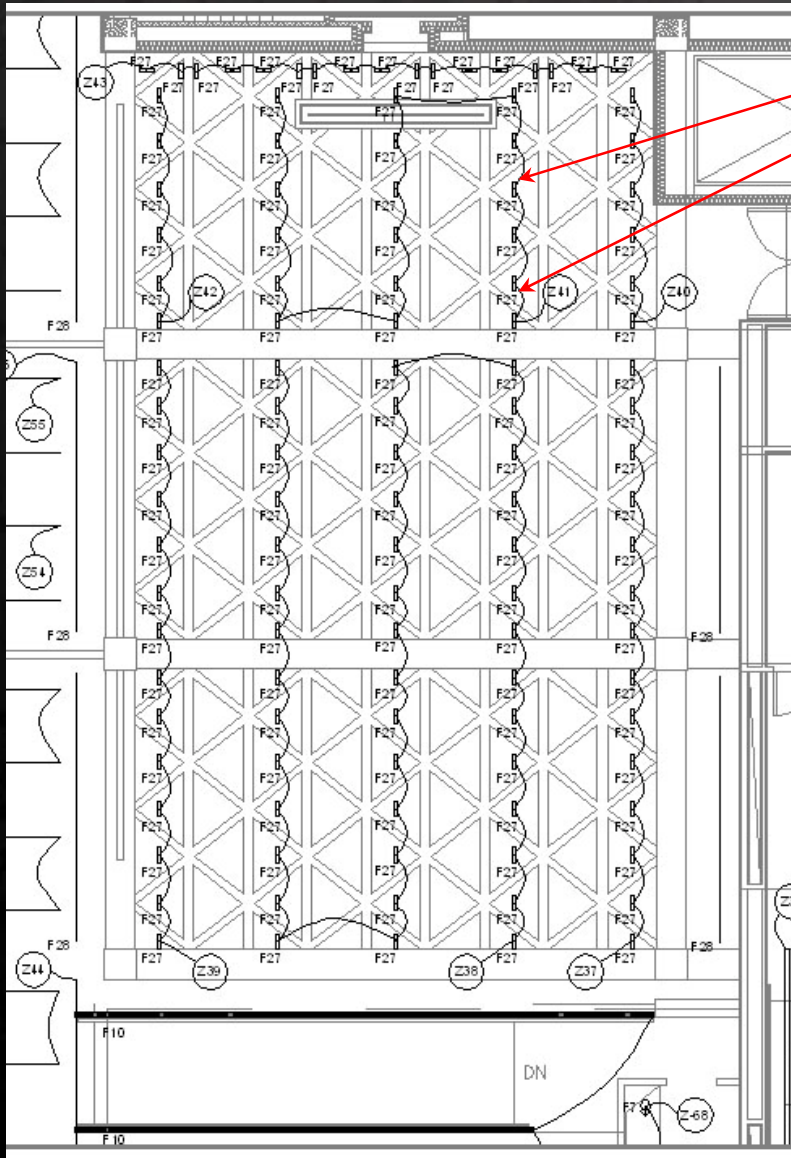
**Track mounted MR-16 halogen wallwash**  
50 W



# PROTHRO GALLERY

## Lighting Depth

### Redesigned Main Gallery (Architecture Breadth)



F27



**Monopoint Track System**  
120 V Recessed track for power, communication devices, and lighting fixtures.

F29



**Track mounted MR-16**  
halogen accent light  
50 W

F30

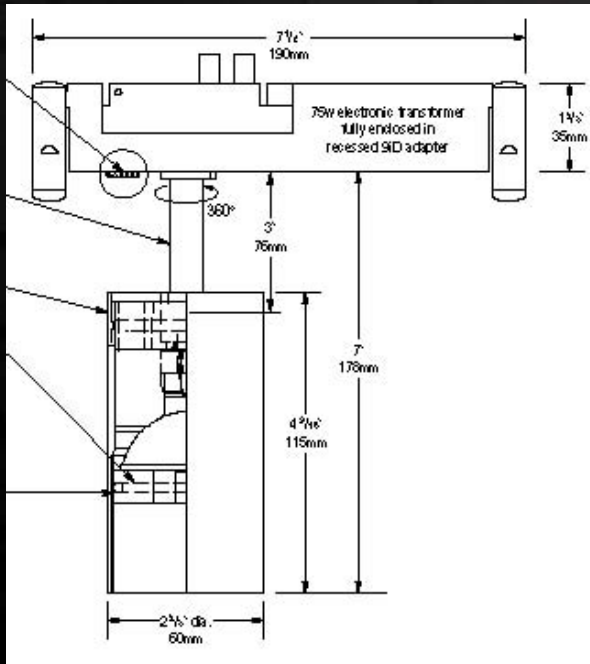


**Track mounted MR-16**  
halogen wallwash  
50 W

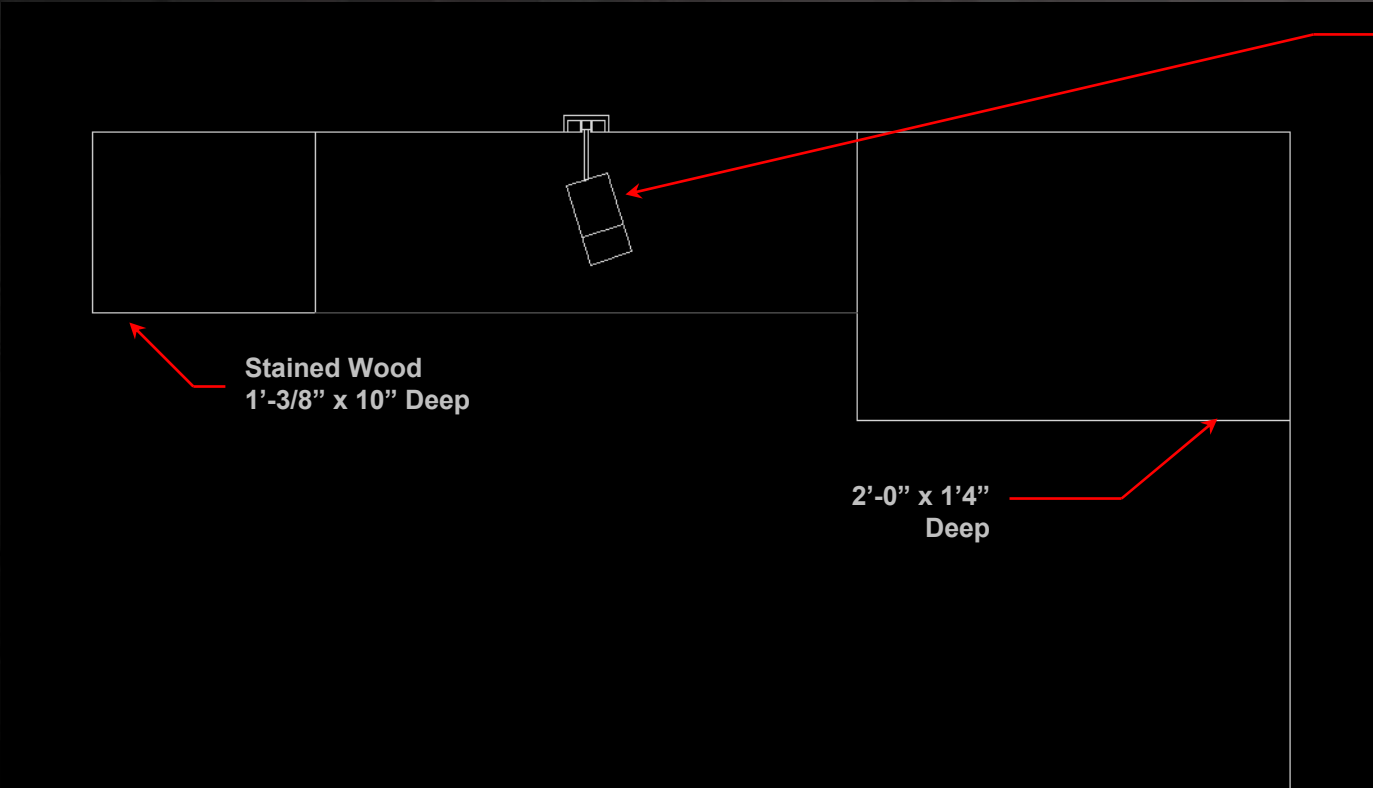
## BUS TRACK vs. TRADITIONAL TRACK SYSTEM

### About Bus Runs

- 120 and 277 V track: more efficient delivery of power
- 60 A power feeds: longer track runs
- Less space on Panelboard
- Ability to use track as power/data source
- Concealed 277/12 V or 120/12 V transformer



## MOUNTING DETAILS



F29

F30



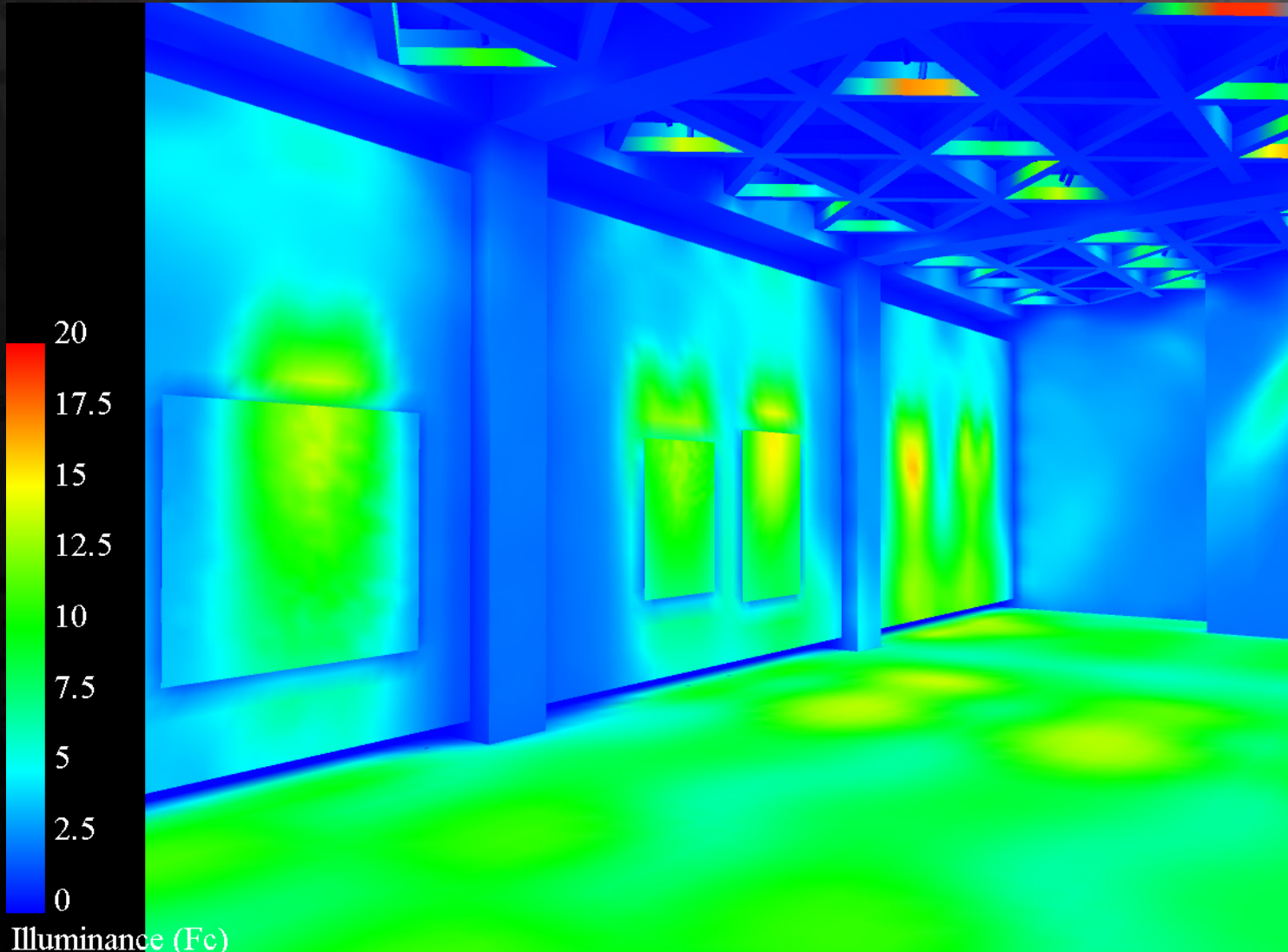
Redesigned Main Gallery Rendering



## Rendered View From Lobby



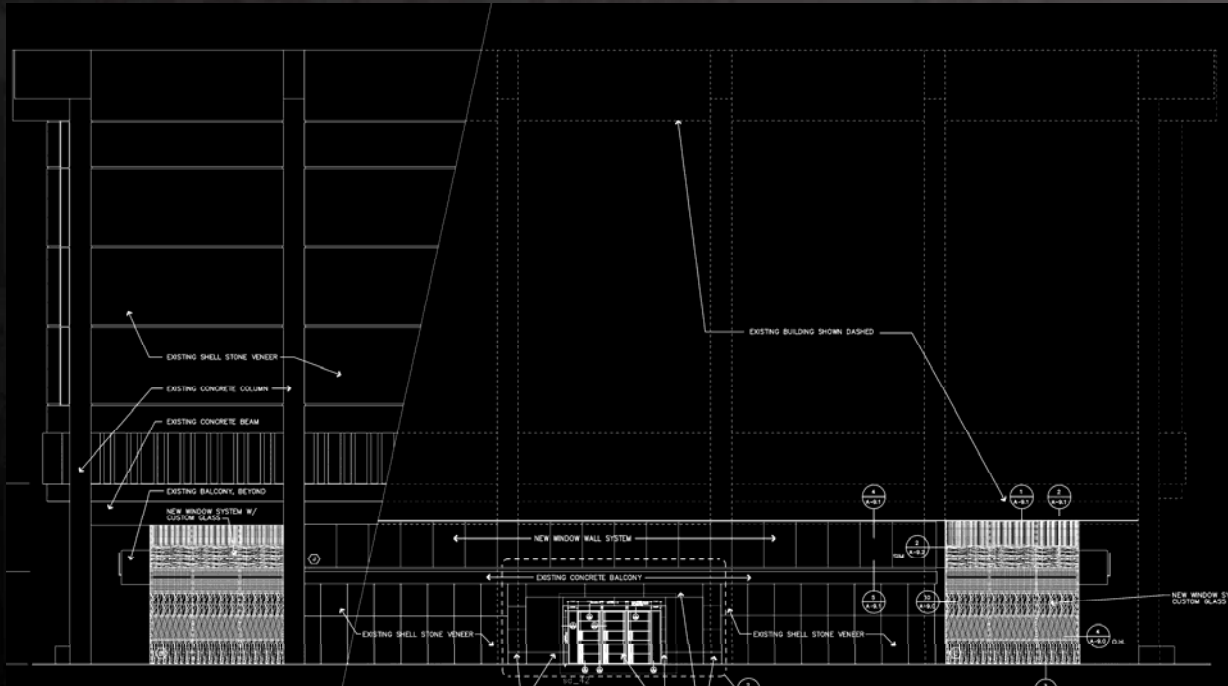
### Pseudo Rendering



7.5 Fc Walls

16 Fc Max Paintings

15.5 Fc Floors



## DESIGN GOAL

- Create a hierarchy of light
- Provide rhythmic lines of light through walkway
- Reinforce the building's geometric architecture
- 0.2-2 Fc pathways
- 1-5 Fc min Canopy

## DESIGN INSPIRATION

Mies van der Rohe (Architect) / Richard Kelly (Lighting Designer)

Seagram Building, NY

Illuminate the canopy with soft pads of light to provide a 'lightness' to the base of the massive stone façade

# EXTERIOR LIGHTING

Lighting Depth

## Conceptual Rendering

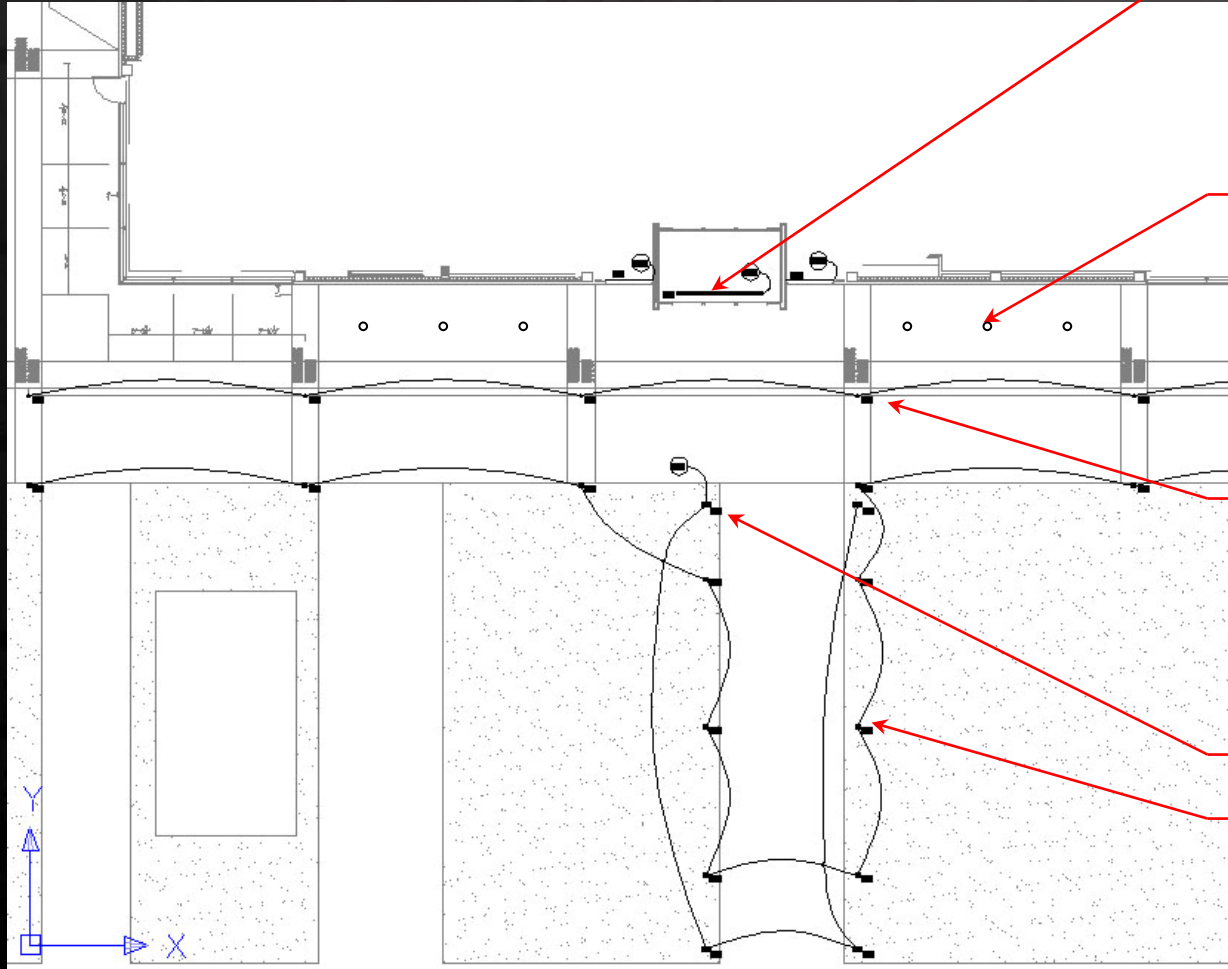




# EXTERIOR LIGHTING

## Lighting Depth

### Site Lighting

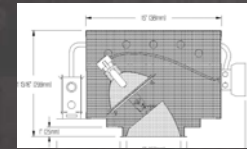


F23



**Recessed Asymmetric Sign Light 54 W T5**

F19



**Canopy Recessed T5 CMH Adjustable Downlights**

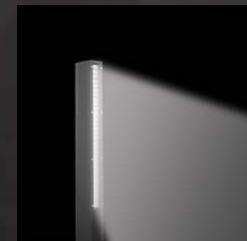
F22



**Grade Recessed Asymmetric MR16 Accent Light (20 W)**

F19

F20



**T5 Bollards and Poles**

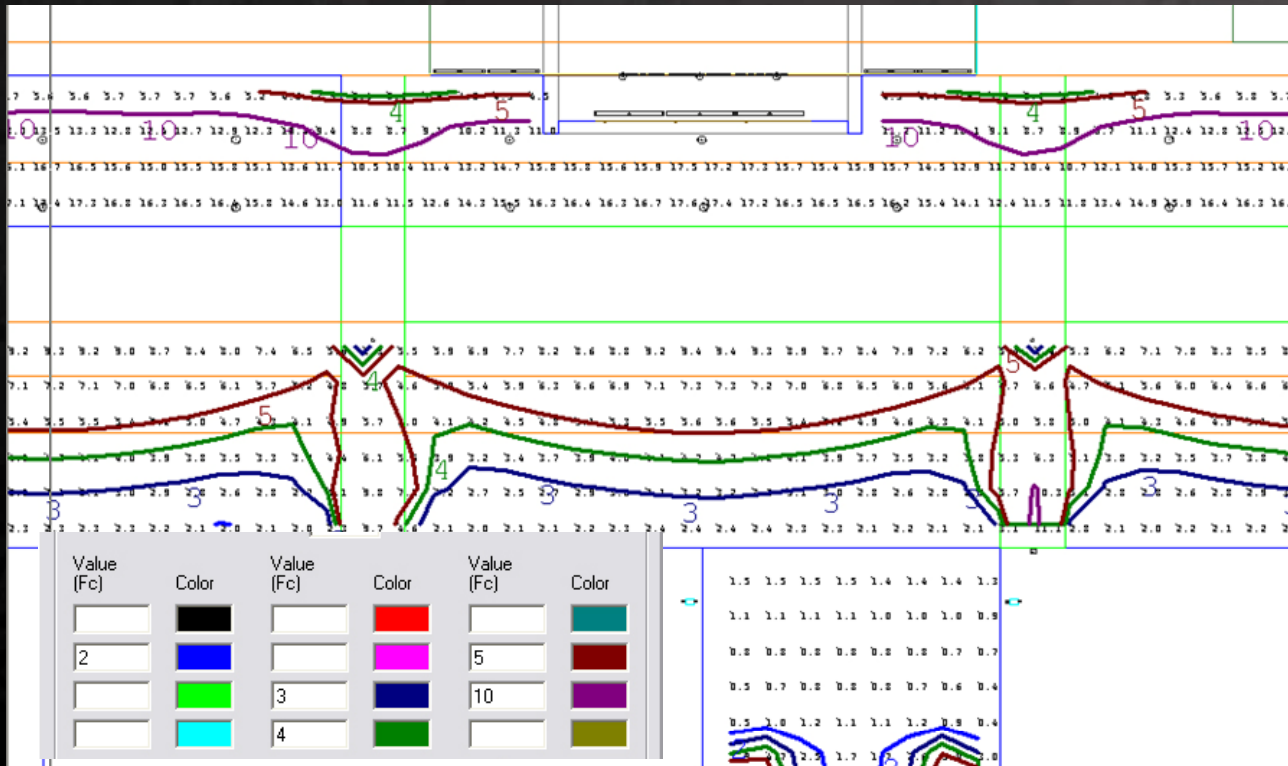
## Front Entry



Walkway Rendering



## Walkway and Canopy Calculations



### Power Density

0.12 W/sq.ft.  
< 1.25 W/sq.ft. ASHRAE

### Average Illuminance

4.09 Fc Canopy

1.14 Fc Pathway

8.10 Avg/Min Ratio Column

## Façade Comparison



**Existing Conditions**



**Redesign**

**Scalloped Patterns reduced significantly with adjustable accent downlight**

## Light Pollution/Trespass Study



**Exterior lighting has minimal impact on surroundings**

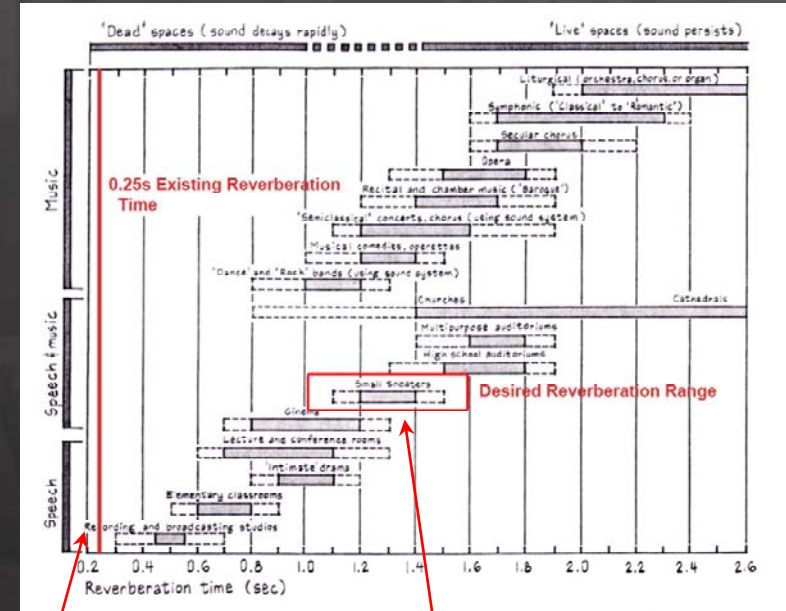
# PROTHRO THEATRE

## ACOUSTICS BREADTH



## Existing Conditions

Reverberation Time - Existing Conditions							
Material	Area (Sq.ft.)	125 Hz		500 Hz		4000 Hz	
		$\alpha$	sabins	$\alpha$	sabins	$\alpha$	sabins
<b>Fully Occupied</b>							
Ceiling							
Mesh Ceiling Panels	9037	0.10	904	0.65	5874	0.40	3615
Concrete	772	0.01	8	0.02	15	0.02	15
Glass	27	0.18	5	0.04	1	0.02	1
Side and Rear Walls							
Veneer Plaster	1532	0.14	214	0.06	92	0.03	46
Columns							
concrete, rough	247	0.01	2	0.04	10	0.10	25
Aisles							
Carpet, heavy on Concrete	426	0.02	9	0.14	60	0.65	277
Proscenium Opening	448	0.15	67	0.10	45	0.07	31
Air	1732	-	-	-	-	-	220
Doors	175	0.19	33	0.09	16	0.05	9
Audience							
seated in upholstered seats	576	0.39	225	0.80	461	0.87	501
<b>Total Absorption</b>			<b>1467</b>	<b>6573</b>	<b>4740</b>		
<b>One-Half Occupied</b>							
Total absorption in auditorium less audience absorption from fully occupied calculation							
			1242	6113	4238		
Seats, upholstered	300	0.19	57	168	177		
Audience in upholstered seats	350	0.39	137	280	305		
<b>Total Absorption</b>			<b>1436</b>	<b>6561</b>	<b>4720</b>		
<b>Theatre Volume (ft<sup>3</sup>)</b>		<b>27770</b>					
Conditions	Reverberation Time (s)						
	125 Hz	500 Hz	4000 Hz				
Fully Occupied	0.95	0.21	0.29				
One-half Occupied	0.97	0.21	0.29				
<b>500-4000 Hz Average, Fully Occupied</b>	<b>0.25</b>						
<b>500-4000 Hz Average, Half Occupied</b>	<b>0.25</b>						



0.25s Reverberation Time

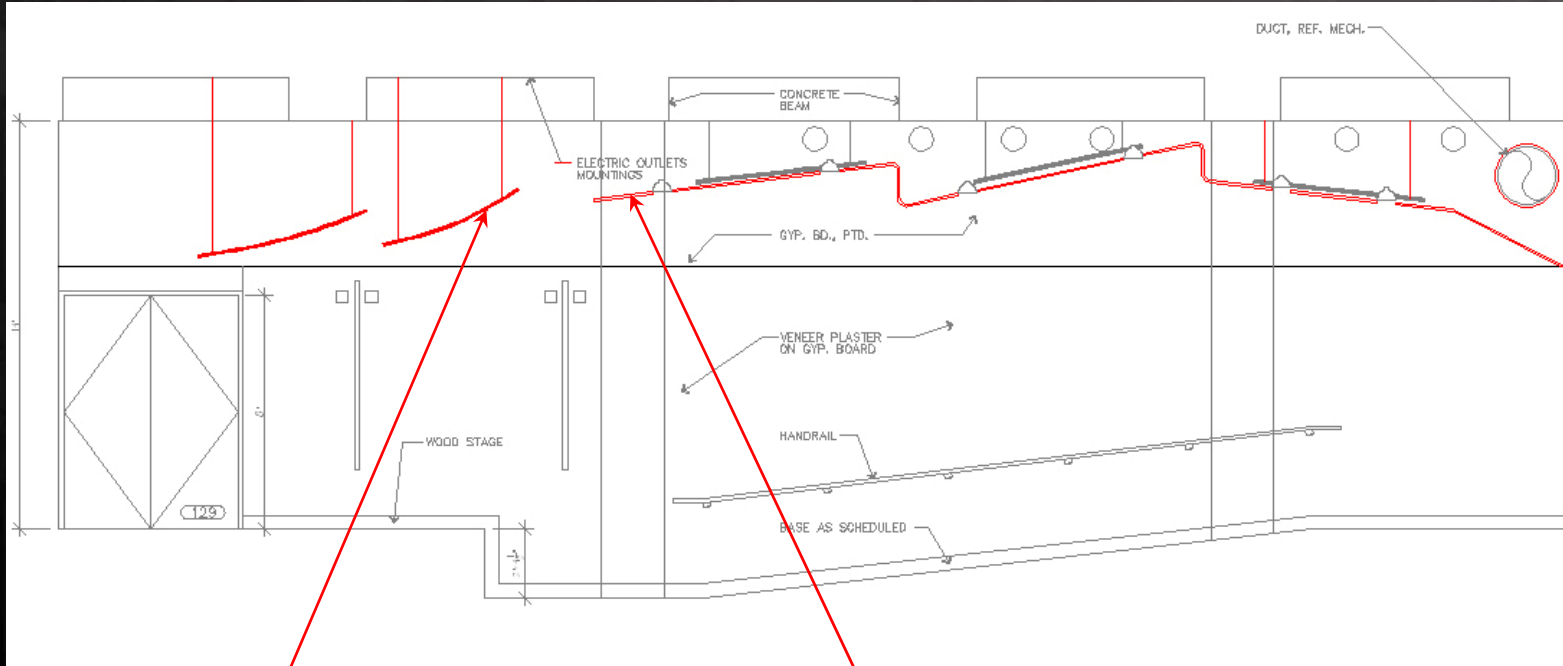
1.30s Target Reverberation Time

$$T = 0.05 V / a$$

220 sabins assumed for room air



## Redesigned Ceiling With Sound Reflectors (Red)

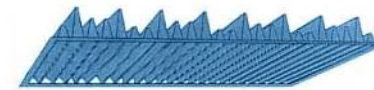


**Reflectors**



<http://www.erco.com>

**Sound Diffusing Ceiling**

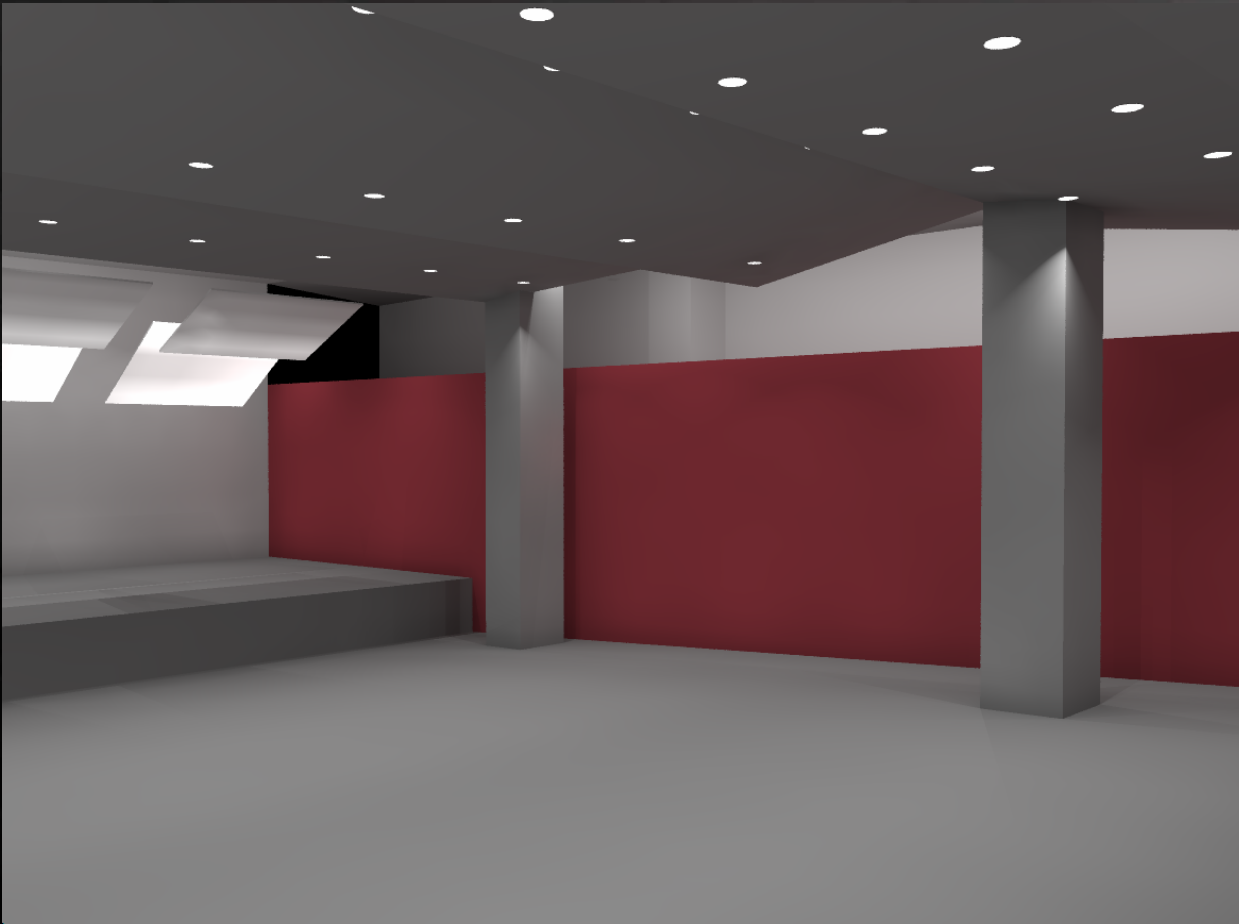


*Our most efficient sound diffuser*

Finish	Octave Band (HZ)						
	125	250	500	1000	2000	4000	N.R.C.
Gel-coat	.23	.43	.40	.42	.20	.11	.35

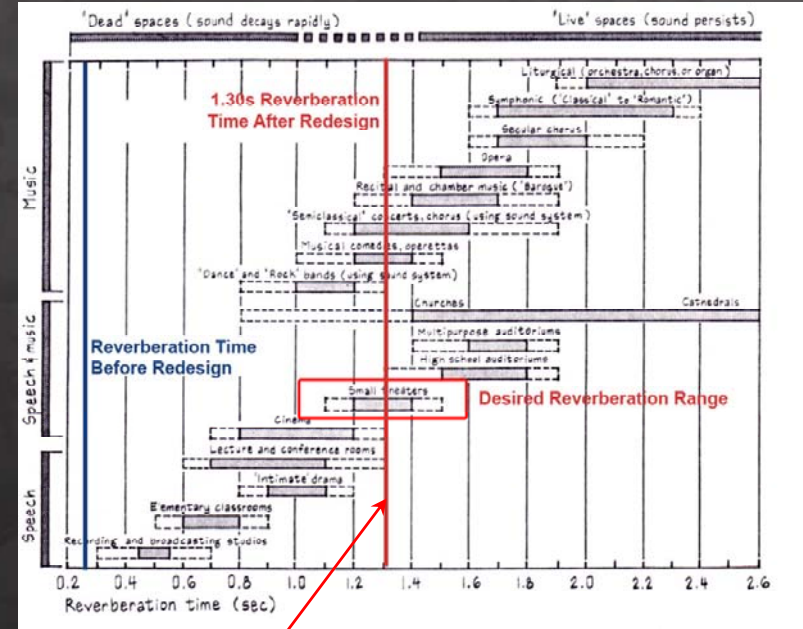
Tested in accordance with ASTM test procedures C-423.  
 Type "E-400" Mounting.  
 Actual test data available upon request (Q44).

## Rendering with Sound Diffusing Ceiling



## Redesigned Conditions

Reverberation Time - Acoustical Redesign							
Material	Area (Sq.ft.)	125 Hz		500 Hz		4000 Hz	
		$\alpha$	sabins	$\alpha$	sabins	$\alpha$	sabins
<b>Fully Occupied</b>							
Ceiling							
Mesh Ceiling Panels	1200	0.23	276	0.40	480	0.11	132
Concrete	500	0.01	5	0.02	10	0.02	10
Reflectors	288	0.01	3	0.01	3	0.01	3
Side and Rear Walls							
Glass	27	0.18	5	0.04	1	0.02	1
Veneer Plaster	1532	0.14	214	0.06	92	0.03	46
Columns							
concrete, rough	247	0.01	2	0.04	10	0.10	25
Aisles							
Wood floors	426	0.15	64	0.10	43	0.07	30
Proscenium Opening	448	0.15	67	0.10	45	0.07	31
Air	1732	-	-	-	-	-	220
Doors	175	0.19	33	0.09	16	0.05	9
Audience							
seated in upholstered seats	576	0.39	225	0.80	461	0.87	501
<b>Total Absorption</b>			<b>895</b>		<b>1160</b>		<b>1007</b>
<b>One-Half Occupied</b>							
Total absorption in auditorium less audience absorption from fully occupied calculation			670		699		506
Seats, upholstered	300	0.19	57	0.56	168	0.59	177
Audience in upholstered seats	350	0.39	137	0.80	280	0.87	305
<b>Total Absorption</b>			<b>864</b>		<b>1147</b>		<b>988</b>
<b>Theatre Volume (ft<sup>3</sup>)</b>	<b>27770</b>						
<b>Reverberation Time (s)</b>							
Conditions		125 Hz		500 Hz		4000 Hz	
Fully Occupied		1.55		1.20		1.38	
One-half Occupied		1.61		1.21		1.41	
<b>500-4000 Hz Average, Fully Occupied</b>		<b>1.29</b>					
<b>500-4000 Hz Average, Half Occupied</b>		<b>1.31</b>					



1.30 Avg. 500/4000Hz Reverberation time

**\*Redesign successfully meets target (exact!)**

# PROTHRO THEATRE

## Summary

Significant savings in energy consumption (50-75%)

New dimming system simplifies building operations

Gallery lighting/electrical is more efficient

Visibility of gallery fixtures has been minimized

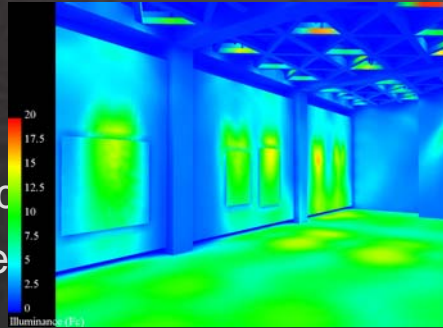
Exterior lighting improved

Room acoustics for Prothro Theatre significantly improved

# HARRY RANSOM HUMANITIES RESEARCH CENTER



Tristram, Ted  
Professor Bowe



Prof. Harfitt, Professor H



...s design advice



and in p



re light

All of my wonderful friends

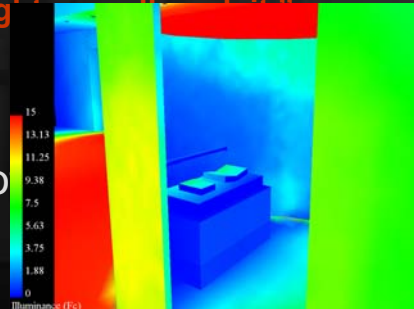
...ose or you in the audience!

Lauren... my chief AGI model

“If you’ve got it, you might lose it.”



...m, dad, and bro



...rive this sem

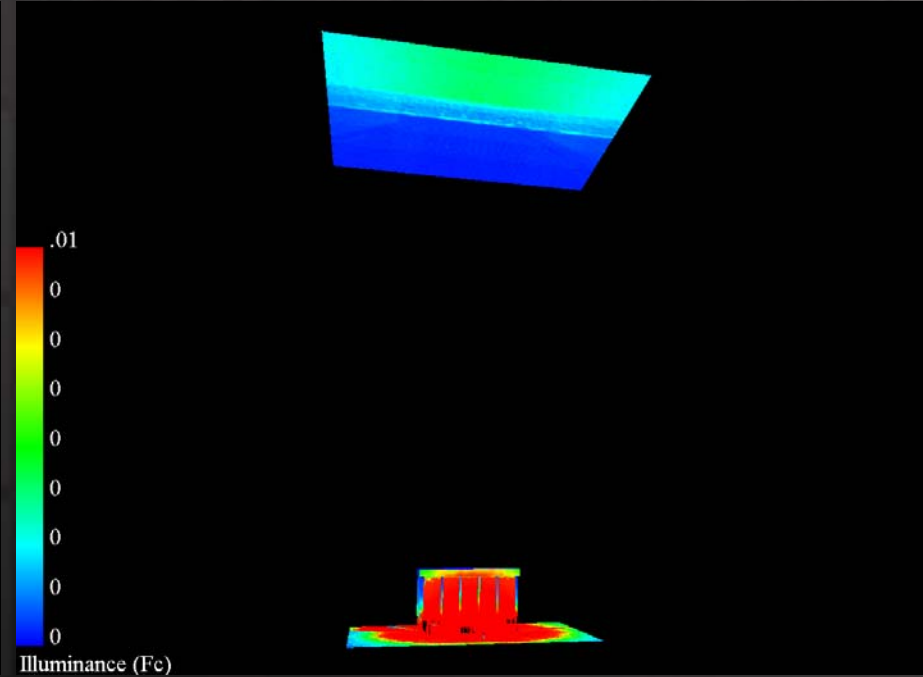


# HARRY RANSOM HUMANITIES RESEARCH CENTER

## Light Pollution/Trespass Study

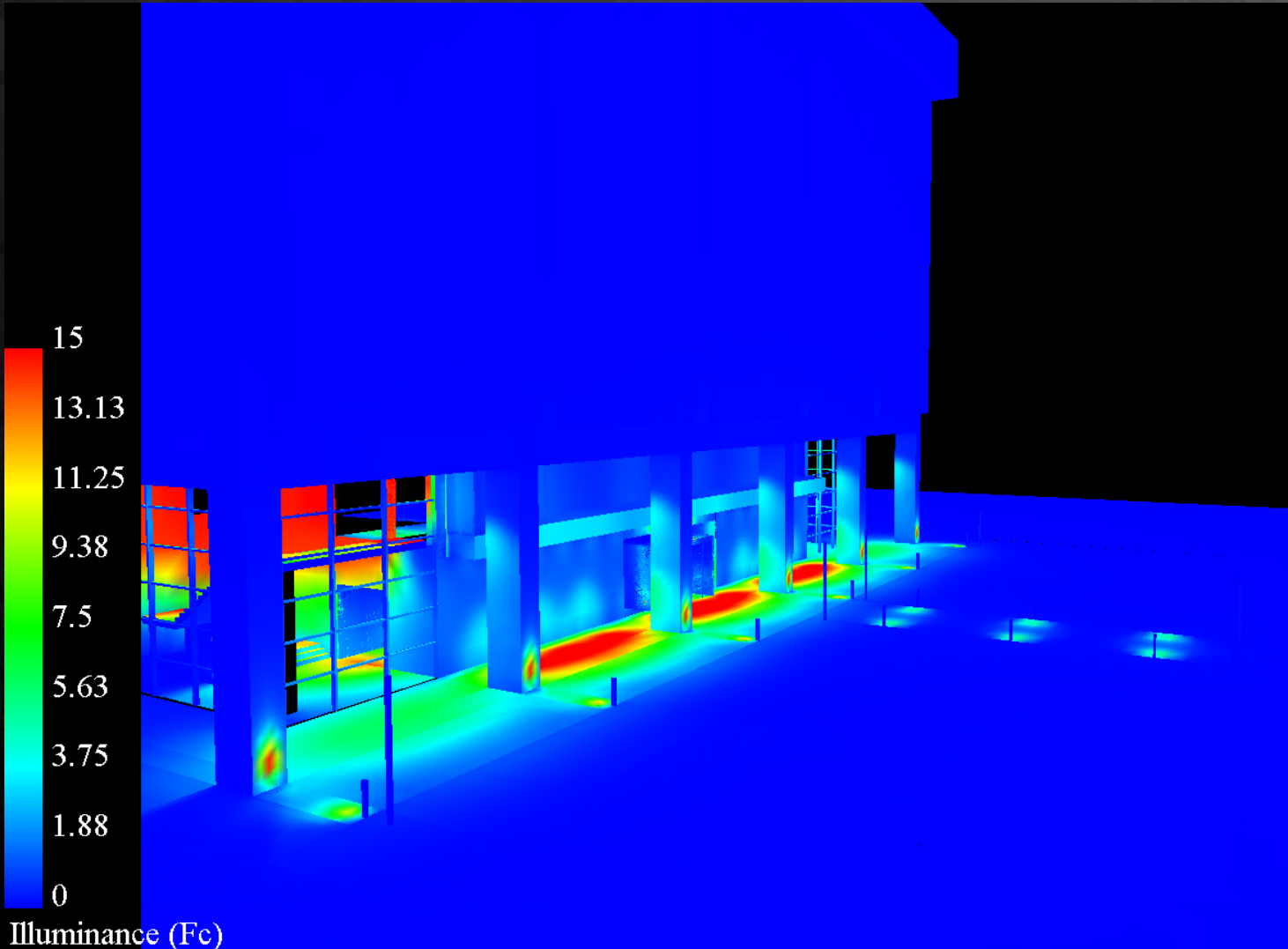


Rendered View



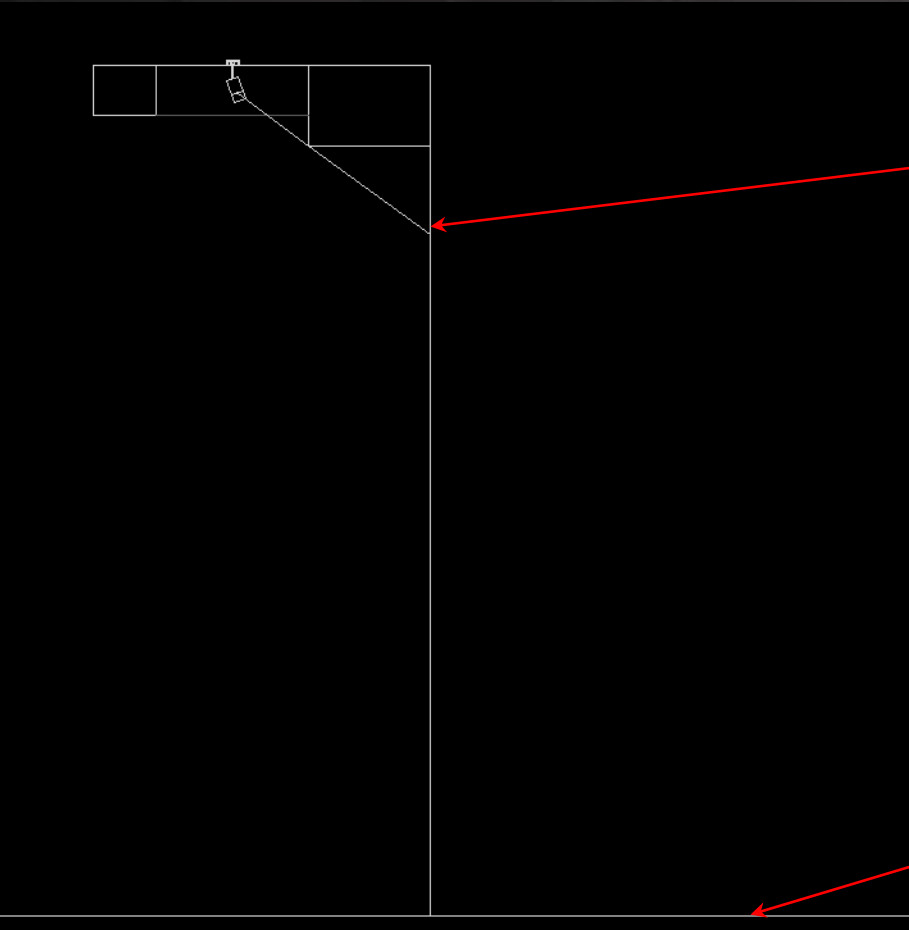
Pseudo Image  
<0.005 FC

## Pseudo Rendering



## MOUNTING DETAILS

---



11'-2-1/2" From Floor Finish

Finish Reference