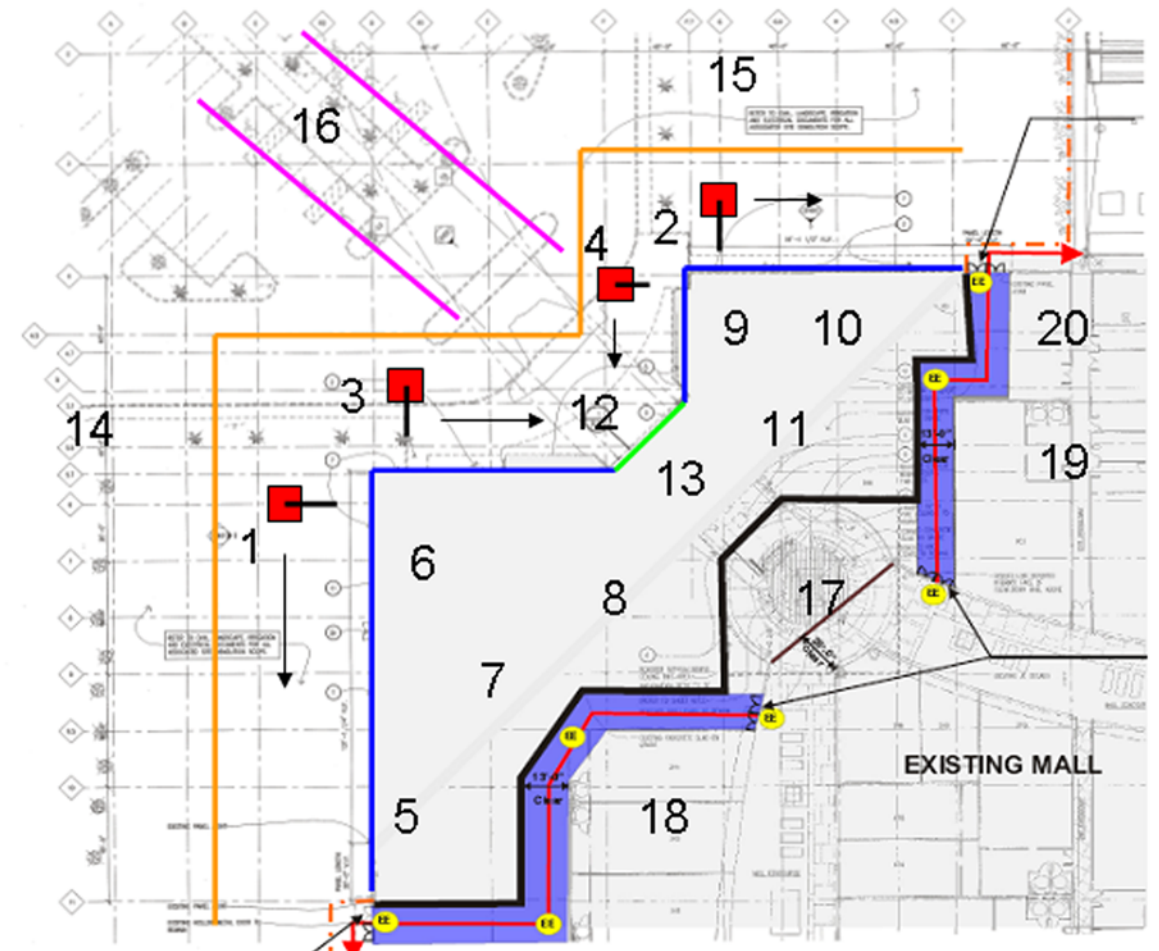


- | | | | |
|--|--------------------------------------|--|--|
| 1 First Pre-Cast Panel to Fall and Proceed South | 6 Second Roof/Joist Removal Location | 11 Seventh Roof/Joist Removal Location | 16 Egress During Demo Before Corridors |
| 2 Second Pre-Cast Panels and Proceed East | 7 Third Roof/Joist Removal Location | 12 Entry One Canopy Removal | 17 Entry One Hurricane Wall Removal |
| 3 Third Set of Panels and Proceed East | 8 Fourth Roof/Joist Removal Location | 13 Entry One Glass Removal | 18 Demo Area South Corridor Removed |
| 4 Fourth Set of Panels and Proceed South | 9 Fifth Roof/Joist Removal Location | 14 Temporary Fencing, First to be Removed | 19 Demo Area North Corridor Removed |
| 5 First Roof/Joist Removal Location | 10 Sixth Roof/Joist Removal Location | 15 Temporary Fencing, Second to be Removed | 20 Skanska Office Removal |

Legend

- Bass Pro Shop Pad Prep/ Construction
- Existing Mall
- Area of Roof Demolition/ New Construction
- New Exit Corridor
- Temporary Pedestrian Tunnel
- Demolition
- New Demising Wall Dry wall Construction
- New Demising Wall Masonry Construction
- Temporary Partition (8'-0" Ht)
- Temporary Exterior Weather Resistant Partition
- Pedestrian Egress Path
- Construction Fencing
- Emergency Egress Signage

Notes:
 The pedestrian tunnel will be designed with, life safety systems including fire protection emergency lighting, Signage, rated construction and structurally engineered.



1- new pair of (2) 3'-0" x 7'-0"
 & 1- existing pair of (2) 3'-0" x 7'-0"
 hollow metal exit doors with
 panic hardware

- Demolition Excavator Starting Location
- Egress Prior to Temporary Corridors Opening
- Temporary Egress/Safety Fencing
- Pre-Cast Wall Panel Demolition
- Entry One