

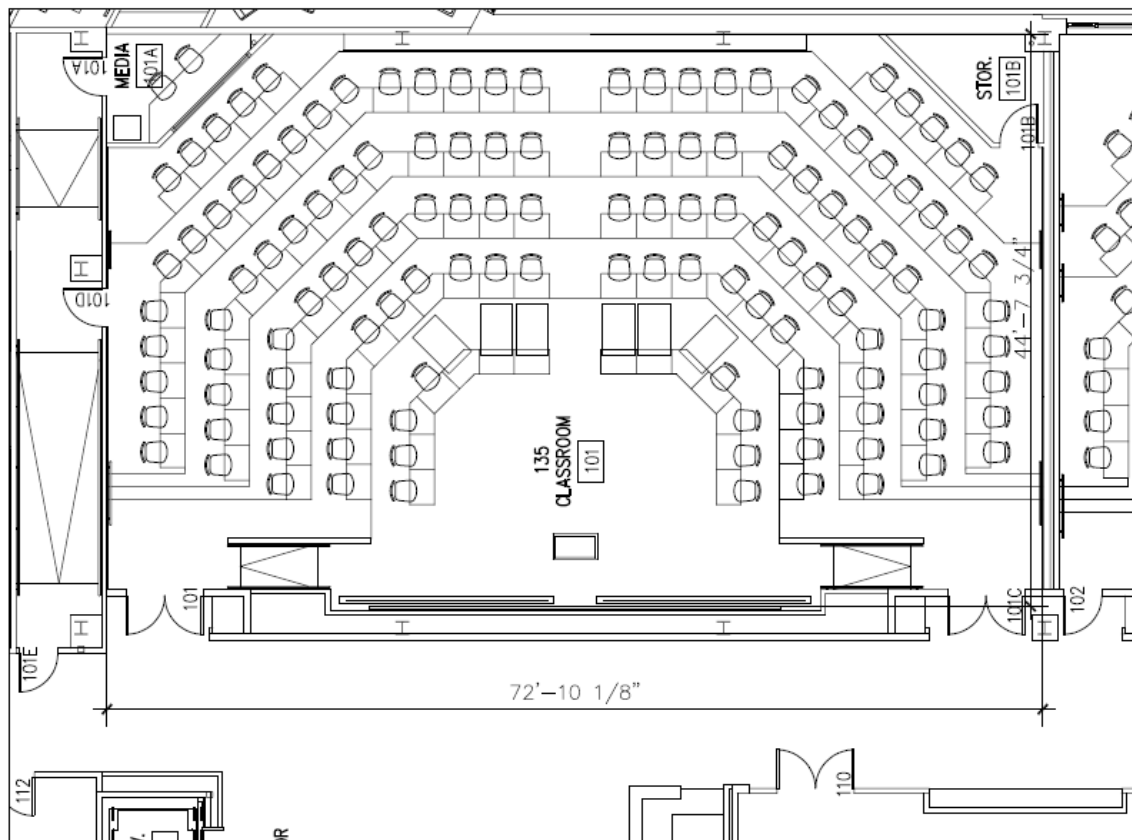
Villanova University: School of Law
Villanova, PA

Lighting Proposal Memo

September 12, 2007

The four spaces I plan to redesign are the 135 seat classroom which is located on the first floor, the Moot Courtroom located on the second floor, the atrium and the west-facing courtyard.

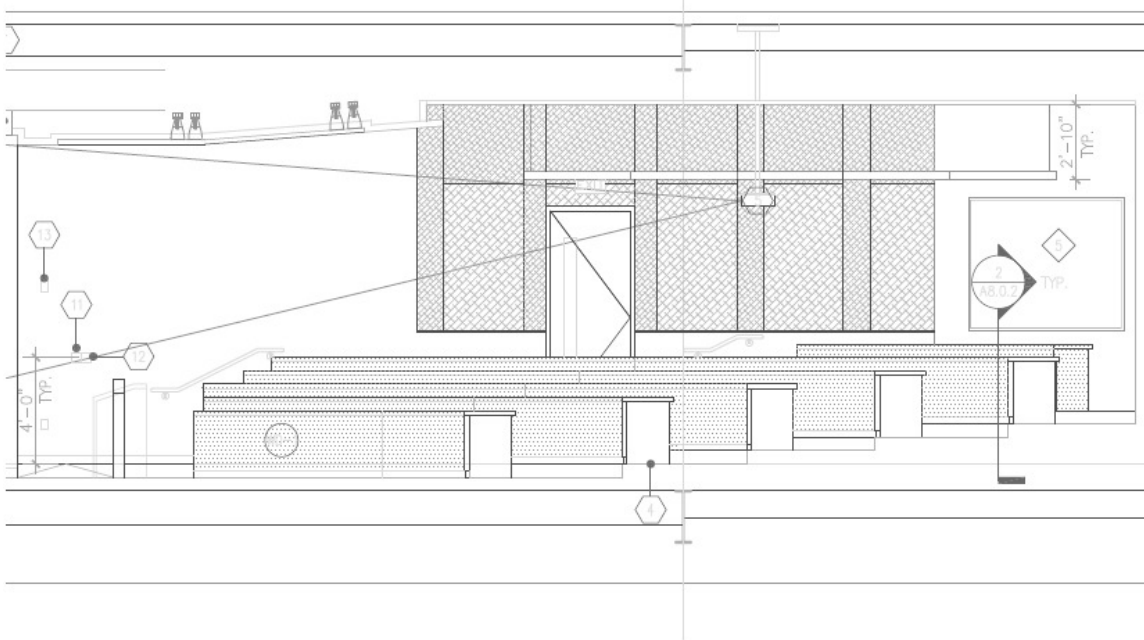
The 135 seat classroom is a tiered classroom that is designed for large meetings and lectures that will feature a speaker to the front of the room and the audience seated looking toward the speaker. Unlike many lecture halls and large tiered classrooms, this room is designed in a “U-shape”. The students seated along each side wall will face into the room while the students seated along the back wall will face toward the front of the room. This will allow for the students to be closer to the instructor than they would normally be a traditional lecture hall. It also allows for some open space in the middle if there were ever to be a demonstration that is to take place in the classroom.



Villanova University: School of Law
Villanova, PA

Lighting Proposal Memo

September 12, 2007



NORTH ELEVATION/SECTION
135-P CLASSROOM

The walls in this space are painted gypsum wall board, with some wood paneling at select spaces. The ceiling is painted gyp as well. The floor is carpeting.

Summary of Space Usages

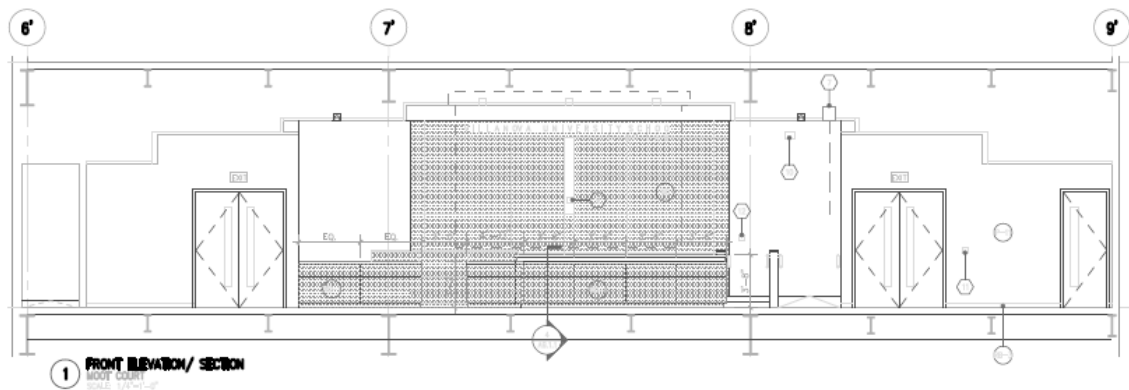
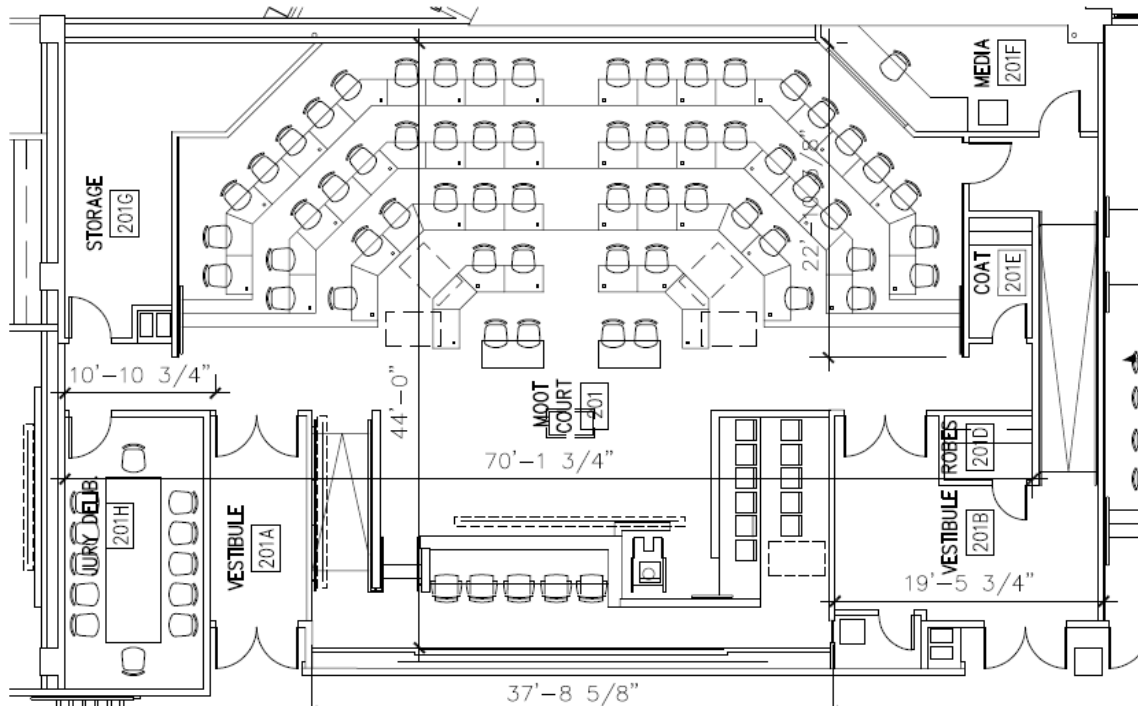
- Lectures
- Presentations
- Other classroom activities

Villanova University: School of Law
Villanova, PA

Lighting Proposal Memo

September 12, 2007

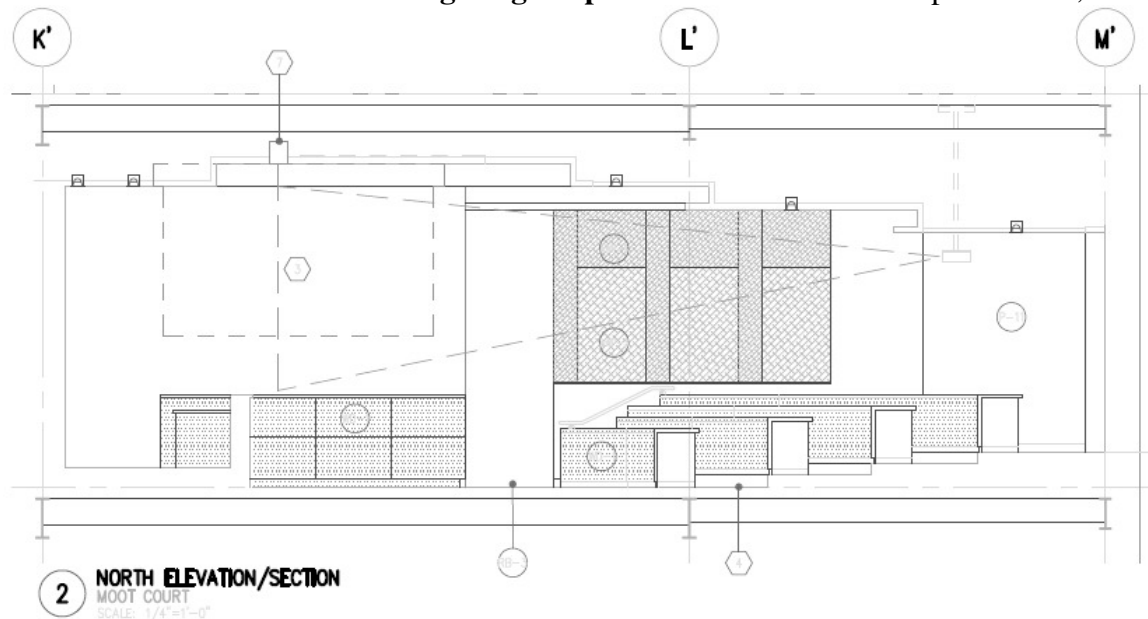
The Moot Court is designed to function just like a real court room but will not hold real trials. In the front of the court room is the judge's bench and witness stand. Facing the bench are the prosecution and defense tables. Behind the two tables is a very large seating area. This area is larger than some courtrooms for the sole reason of allowing a multitude of student to sit in on the moot proceedings.



Villanova University: School of Law
Villanova, PA

Lighting Proposal Memo

September 12, 2007



The materials in this space are much like the tiered classrooms. Parts of the walls and the ceiling are gyp board. Select parts of the walls are wood paneling. The flooring throughout will be covered with carpeting. The seating area and the bench are both finished with high quality wood.

Summary of Space Usage

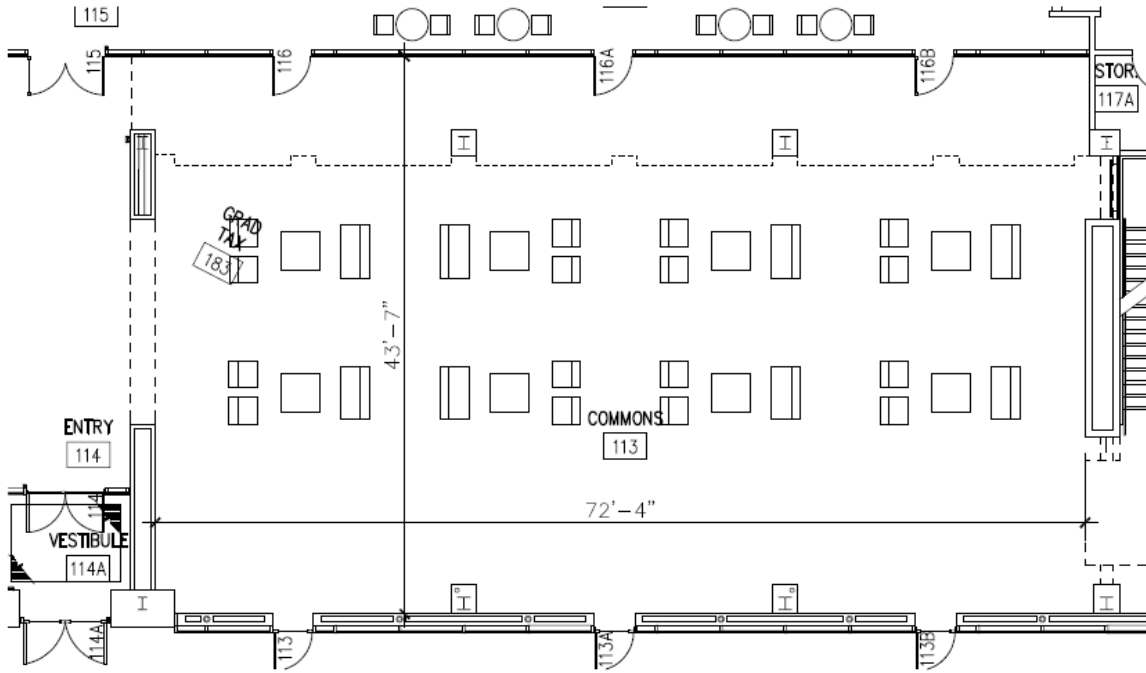
- Mock trials
- Classroom type demonstrations
- Learning activities
- Observation

The atrium is a double high space that is located in the middle of the two “L-shaped” plans. The atrium has glazing the entire height and will serve as a sitting area as well as a circulation space to connect the two different wings of the building (the law library and the classroom wings).

Villanova University: School of Law
Villanova, PA

Lighting Proposal Memo

September 12, 2007



Villanova University: School of Law
Villanova, PA

Lighting Proposal Memo

September 12, 2007

As seen in the above rendering the materials that will be used in the atrium are painted gyp board and wood paneling on the walls. Part of the ceiling is also wood paneling. The rest of the space is open to the second floor. The front of the atrium is double high glazing with steel mullions. Carpeting will be on the floor.

The atrium is a space that will require some mechanical system study as well as lighting control implementation due to the solar gain and daylight that will enter the space. If either of these two areas are not addressed, the space has the potential to increase both the cooling load and heating load in the summer and winter respectively.

Summary of Space Usage:

- Sitting area
- Entry area
- Circulation
- Connection between two building wings

The courtyard can be seen in the image below. This courtyard will serve as a space to sit and relax during both the day and the night. This is a space that will draw people to this building in the evening with the help of the atrium behind it.



The courtyard is mostly a grass area with walkways worked in. The patio is not a dominant part of this space. This space has the potential to really serve as focal point in the evening as well as a place for people to relax in both the day and evening hours.

Villanova University: School of Law
Villanova, PA

Lighting Proposal Memo

September 12, 2007

The four spaces I've chosen to redesign give me the opportunity to add to the great architecture of this building. The legal institution in America has forever been one of excellence and prestige. A great lighting design has the ability to enhance those ideals that have already been embedded in the architecture and I look forward to the opportunity to produce such a design.