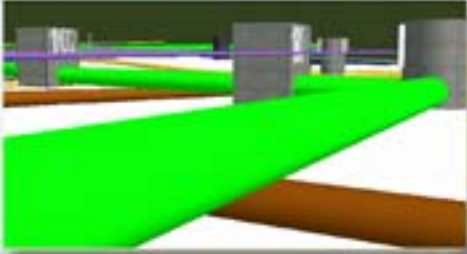


EMORY UNIVERSITY PSYCHOLOGY BUILDING ATLANTA, GA

PROJECT OVERVIEW

- Higher education building
- Guaranteed maximum price of \$35,029,000
- Construction Schedule: October, 2007 – February, 2009
- Seeking LEED Silver certification upon completion
- Use of Building Information Modeling for site coordination and MEP clash detection



PROJECT TEAM

- Owner – Emory University
- Construction Manager – Holder Construction
- Architect – HOK Inc.
- Civil Engineer – Travis Pruitt & Associates
- MEP Engineer – Nottingham Brook and Pennington
- Structural Engineer – KSI Structural Engineers
- Lighting Design - CD+M Lighting Design Group

ARCHITECTURAL FEATURES

- Granite and stucco exterior backed by CMU
- Glazed curtain wall on east facade overlooking outdoor plaza
- 5 Stories above grade plus a mechanical penthouse
- Red clay tile roof covering mechanical penthouse, modified bituminous membrane roof system over flat roof
- Contains labs, classrooms, and offices of Emory's Psychology Department

MEP SYSTEMS

- 4 Rooftop AHUs ranging from 4,900 CFM to 55,280 CFM
- Variable air volume terminal units for individual room temperature control
- Steam and chill water utilities tapped into from campus
- 19.8 kV electrical utility feed from campus stepped down to 480/277 V
- Some systems stepped down again to 208/120 V 3PH
- 300 kW 3 PH 480/277 V diesel generator in electrical service yard
- Typically fluorescent lights with occupant sensors for power savings
- Sprinklered with wet pipe system



STRUCTURE

- Foundation of drilled piers up to 63' deep and 3' to 4' in diameter plus 4' thick grade beams
- 5" concrete slab on grade plus 4, 5" concrete slabs and 6" concrete roof slab
- 5 Stories cast-in-place concrete beams and columns w/ post-tensioned girders
- Structural steel to support clay tile roof ranging in size from W12x16 to W18x55
- Retaining wall along east facade under curtain wall



Christopher Renshaw

Construction Management