

GOUVERNEUR HEALTHCARE SERVICES

NEW YORK, NY

structural SCOTT M. RABOLD

GENERAL BUILDING DATA

NAME: Gouverneur Healthcare Services

LOCATION: 227 Madison St. New York, NY 10002

BUILDING OCCUPANT: NYC HHC - Gouverneur

FUNCTION TYPE: Healthcare

SIZE: 75,000 sq. ft. addition / 275,000 sq. ft. renovation

NUMBER OF STORIES: 5 and 13 stories



ARCHITECTURE

13 story existing building, built approximately 35 years ago

Two components to the addition:

- 5 story ambulatory care facility
- Expansion to longterm care facility

Facade of existing building is brick with punch widnows

Facade of new addition is glass curtainwall and Glass Fiber Reinforced Concrete Panels (GFRC)

Concrete roof on metal deck with insulation panels and rubberized-asphalt waterproofing membrane

STRUCTURAL

Two-way concrete floor slab in existing building

Non-composite steel framing in new addition

- Nearly all gravity members are castilated beams due to a small floor height

Moment-frame lateral system in 5 story ambulatory center

Braced- frame lateral system in 8 story addition (floors 6-13)

Mini-pile foundation w/ grade beams

PRIMARY PROJECT TEAM

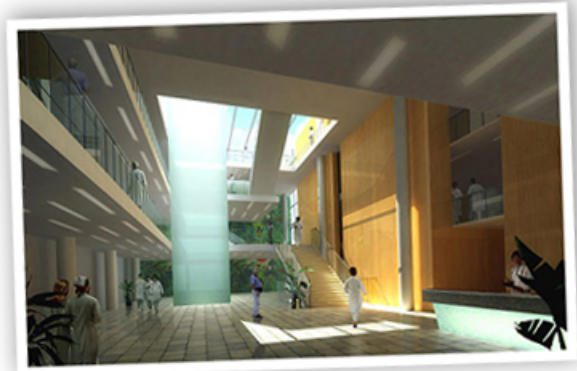
OWNER: NYC Health and Hospitals Corporation
New York, NY

CM: Hunter-Roberts Construction Group
New York, NY

ARCHITECT: RMJM - Hillier
New York, NY

STRUCTURAL ENGINEER Greenman-Pedersen
Scranton, PA

MEP ENGINEER: AKF Engineers
New York, NY



MEP SYSTEMS

Variable Air and Constant Air AHU's w/ dedicated units for atrium and dialysis center

1250kW Emergency Generator in penthouse

480 / 277V 3 Phase 4 Wire System

208 / 120V 3 Phase 4 Wire System

Indirect fluorescent lighting in office spaces

Direct lighting in emergency care facilities