

# SCIENCE CENTER RESEARCH PARK

3711 MARKET STREET PHILADELPHIA, PA

## GENERAL BUILDING DATA

size: 401,032 GSF

stories: 11

dates of construction: November 2006 - May 2008

project delivery method: fast-track

## ARCHITECTURE

- The Science Center Research Park is an addition to the growing research/science development in the University City area.
- The building includes offices, wet labs, retail space, and a 500 car parking garage.
- Covered by glass curtain wall and a brick veneer along the Market Street facade.
- A strong modern entrance with retail spaces on the storefront curtain wall ground floor.
- The largest green roof in the city of Philadelphia



## STRUCTURAL SYSTEM

- Typical 7-1/2 in. composite steel deck on steel beams
- Lateral resistance provided by concentric steel braced frame
- Ground floor is comprised of slab-on-grade, cast-in-place columns, and grade beams.
- Drilled piers are designed for end bearing upon and, where noted in the structural plans, socketing into the 20 ton-per-square foot weathered rock



## M.E.P. SYSTEMS

- Cooling towers, water tanks, air-handling units, and mechanical exhaust fans are located at the penthouse level
- 480/277 volts, 3 phase, 4 wire electrical system
- Smaller motors and lighting shall be connected to 277 and 120 volts, single phase circuits as indicated in the plans
- New dual 13.2 electric service to the Building is nominal 13.2 KV from PECO

## PROJECT TEAM

**Owner:** Wexford Science & Technology, LLC; Hanover, MD  
Wexford NJ Office; Edison, NJ Science Center; Philadelphia, PA

**Architect:** Zimmer Gunsul Frasca Architects LLP; Los Angeles, CA

**Associate Architect:** Ueland Junker McCauley Nicholson LLC;  
Philadelphia, PA

**Structural Engineer:** Keast & Hood Co.; Philadelphia, PA

**MEP /Fire Protection Engineers:**

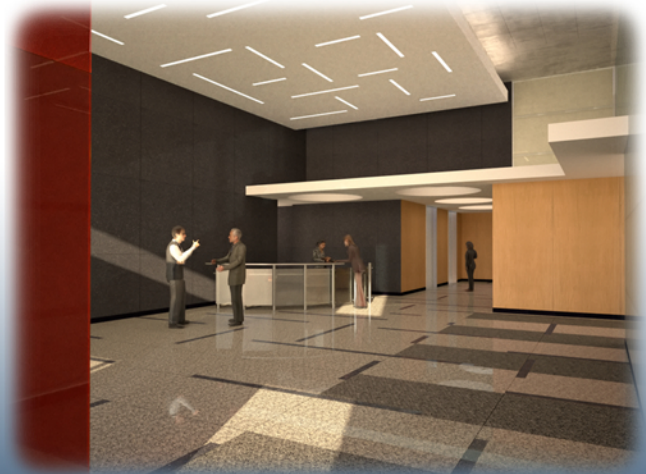
Vinokur-Pace Engineering Services, INC.; Jenkintown, PA

**Civil Engineer:** Boles, Smyth Associates, INC.; Philadelphia

**Geotechnical :** Site-Blauvelt Engineers; Mount Laurel, NJ

**Elevator:** Lerch Bates and Associates; La Rescenta, CA

**Vibration/Air Quality:** Rowan Williams Davies & Irwin INC.;  
Guelph, Ontario, Canada, Nikib8



ZACK YARNALL | STRUCTURAL OPTION

[HTTP://WWW.ENGR.PSU.EDU/AE/THESIS/PORTFOLIOS/2009/ZDY5001/](http://www.engr.psu.edu/ae/thesis/portfolios/2009/ZDY5001/)