



SOUTHERN
MANAGEMENT CORPORATION



CAMPUS CENTER

Josh Winemiller

Schematic Design Presentation

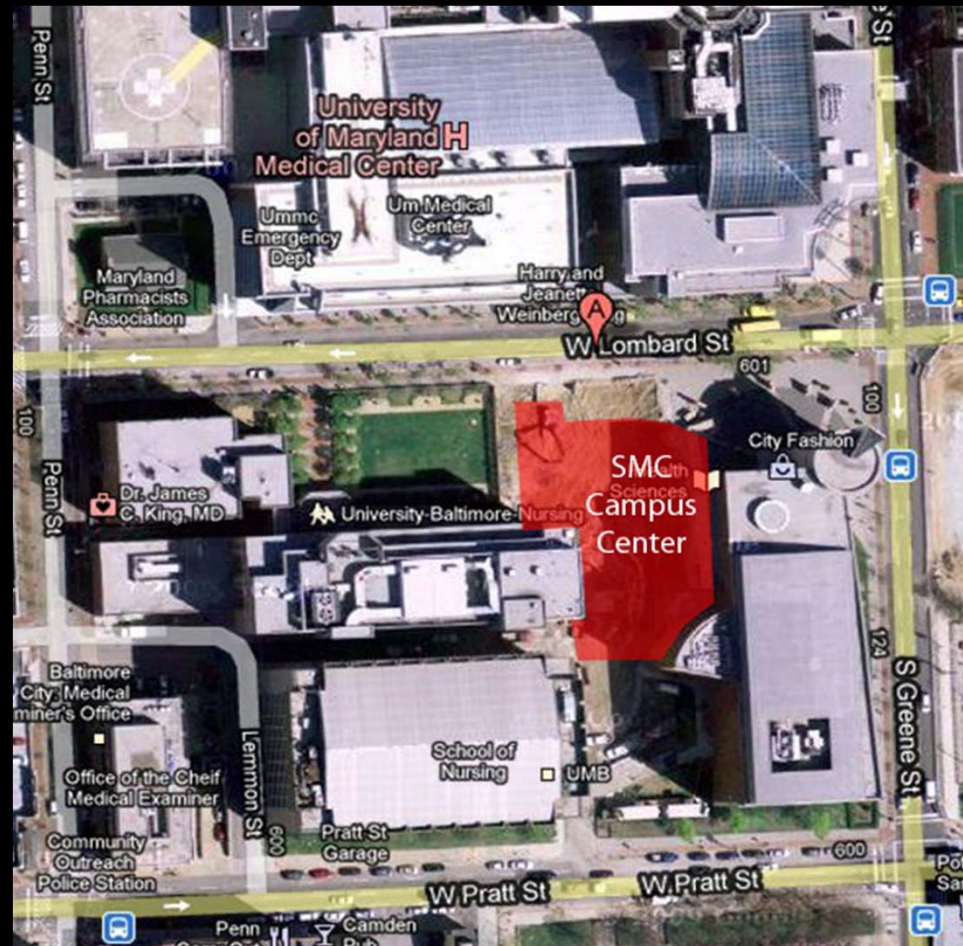
November 29, 2010
Dr. Richard Mistrick
Lighting/Electrical

Outline

- Introduction to the SMC Campus Center
 - Building Statistics
 - Overall Design Goals and Concepts
- Design Criteria, Considerations, & Schematic Design
 - North Façade
 - Main Lobby
 - Classroom
 - Natatorium

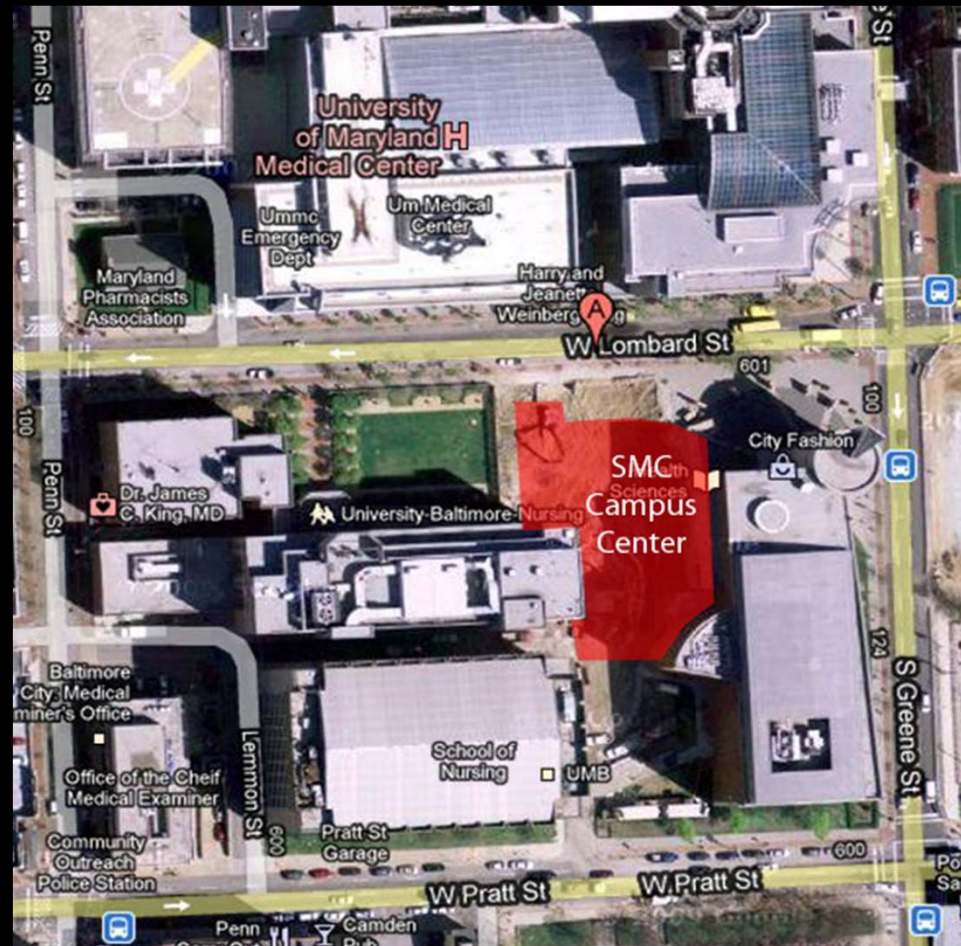
Building Statistics

- Site and Location
University of Maryland
Baltimore Campus
- Size
110,000 Square Feet
- Total Project Cost
\$43,400,000
- Primary Functions
Education Spaces
Food and Dining
Health and Relaxation
Recreational Spaces



Building Statistics

- Owner
University of Maryland
- Architect
WTW Architects, Inc.
- MEP
Henry Adams, LLC
- Structural
WBCM
- CM/PC
Whiting-Turner



Overall Design Goals

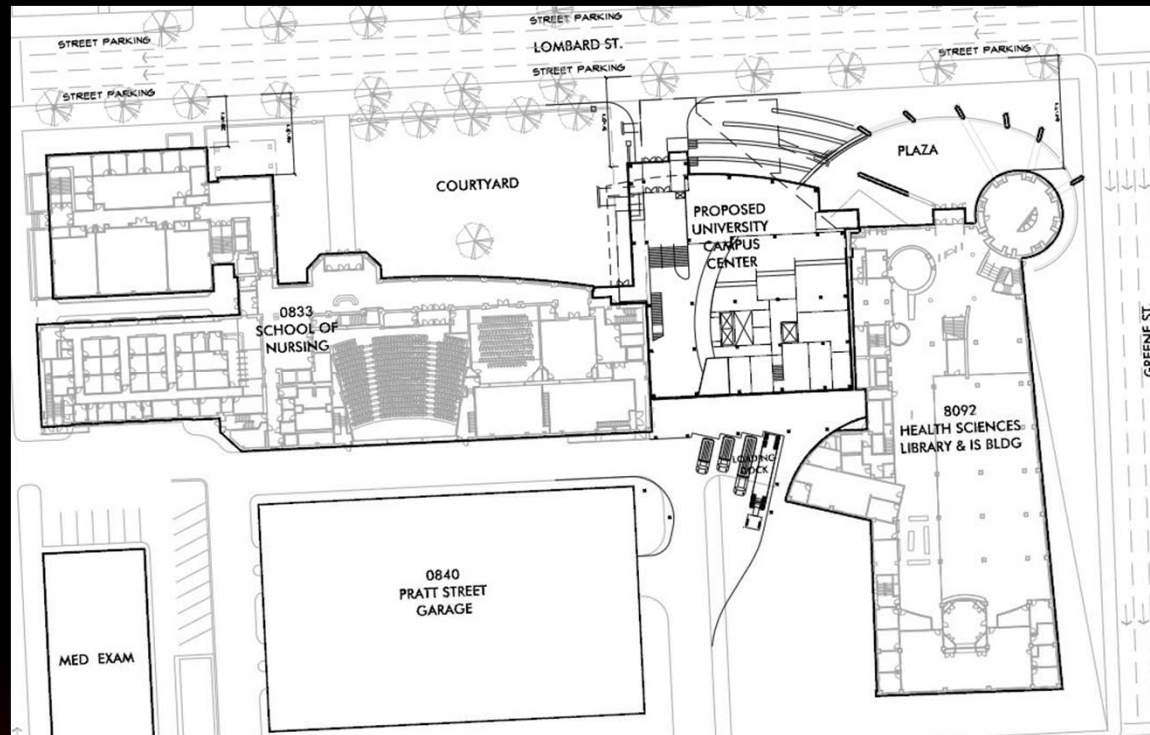
- Modern
Materials
Equipment
- Interactive
Students, Faculty, and Staff
Various Activities per Space

North Facade



North Façade – Design Criteria

- Support the Campus Aesthetic
Architecture
Materials
Surrounding Buildings



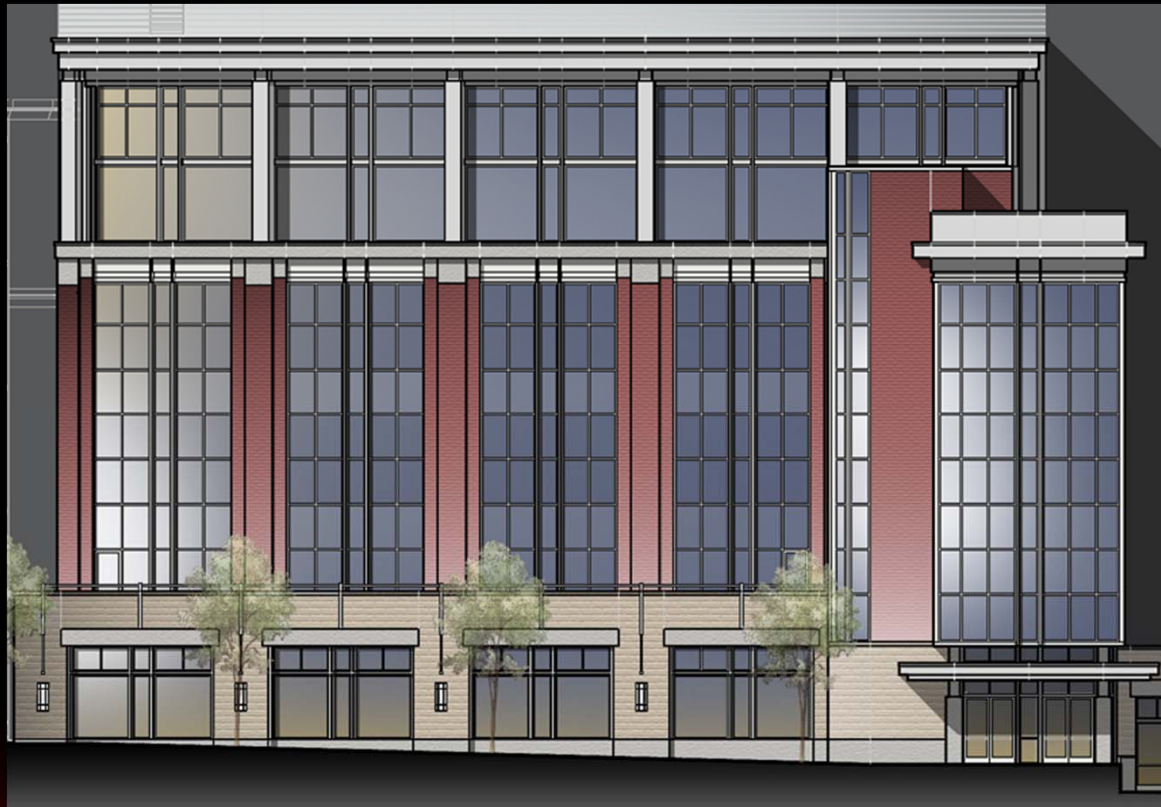
North Façade – Design Criteria

- Support the Campus Aesthetic
Architecture
Materials
Surrounding Buildings
- Guidance to Main Entrance
Safety
- Highlight
Main Entrance
Specific Elements



North Façade – Design Features

- Extensive Use of Glass
- Vertical Alignment
- Covered Entrance



North Façade – Lighting



North Façade – Lighting



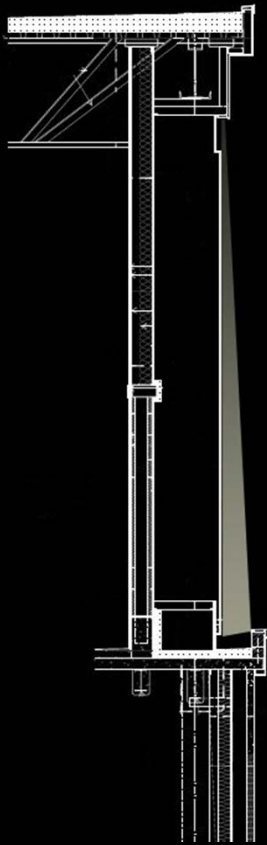
North Façade – Lighting



North Façade – Lighting



North Façade – Lighting



North Façade – Lighting



North Façade – Lighting



North Façade – Lighting



Main Lobby

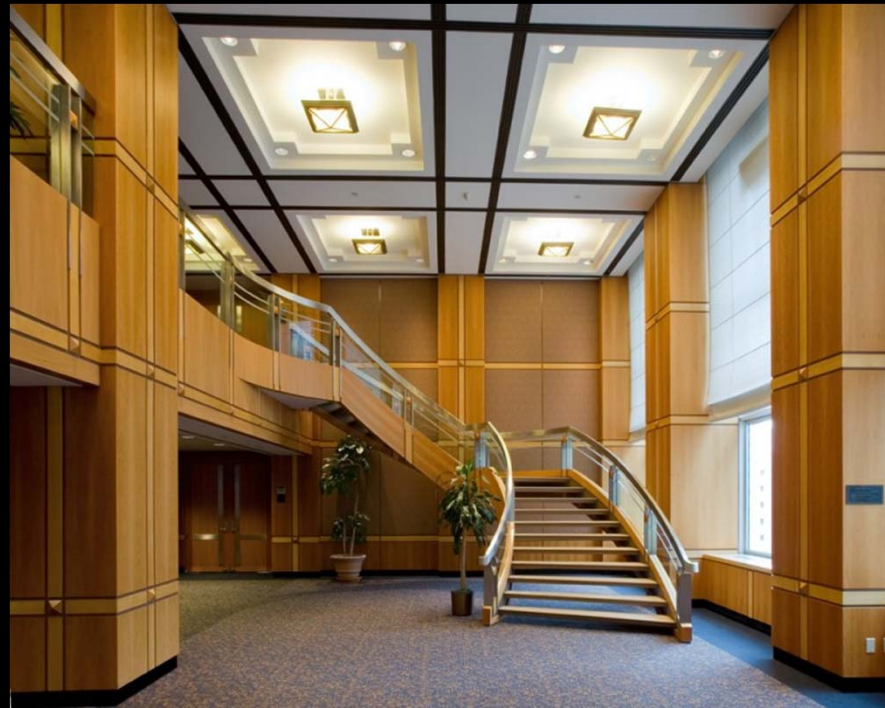


Main Lobby – Design Criteria

- Inviting and Open
Variety of Circulation Paths
- Visual Guidance
Dining Facility
Student Lounges
Information/Elevators
- Highlight
Curved Ceiling
Information Desk
Stairs

Main Lobby – Design Criteria

- Inviting and Open
Variety of Circulation Paths
- Visual Guidance
Dining Facility
Student Lounges
Information/Elevators
- Highlight
Curved Ceiling
Information Desk
Stairs



Sentry Center for Business Class Conference and Meeting Facility
Manhattan, NY

Main Lobby – Design Features

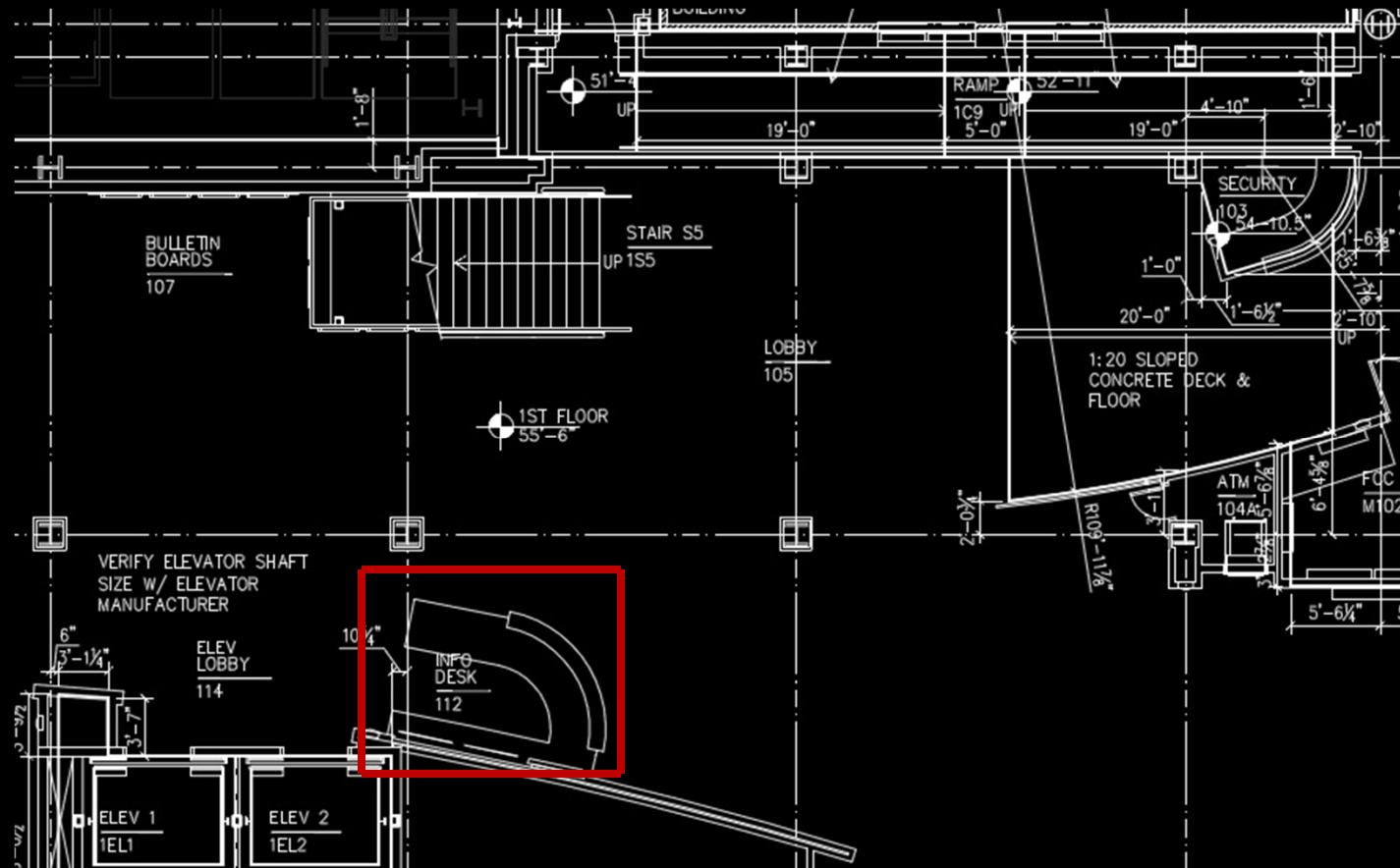
- Information Desk
- Seating Area
- Stairs
- Ceiling

Main Lobby – Design Features

- Information Desk
- Seating Area
- Stairs
- Ceiling



Main Lobby – Information Desk



Main Lobby – Information Desk



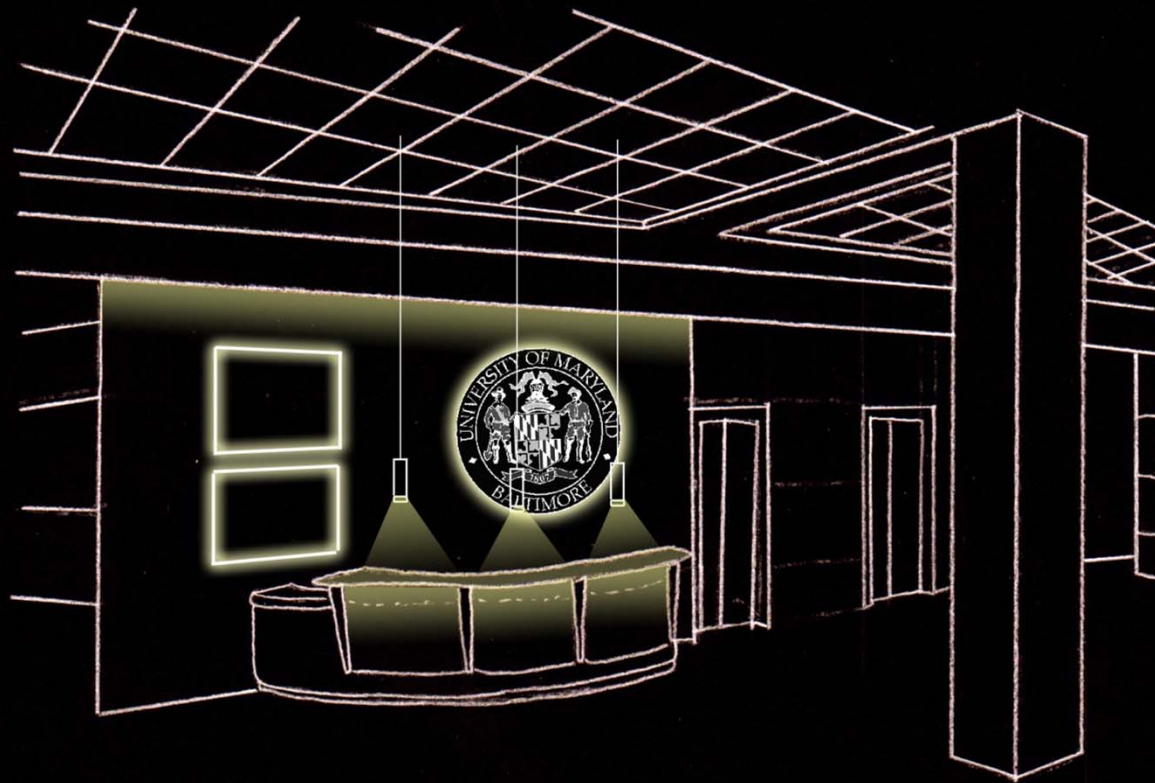
Main Lobby – Information Desk



Main Lobby – Information Desk



Main Lobby – Information Desk



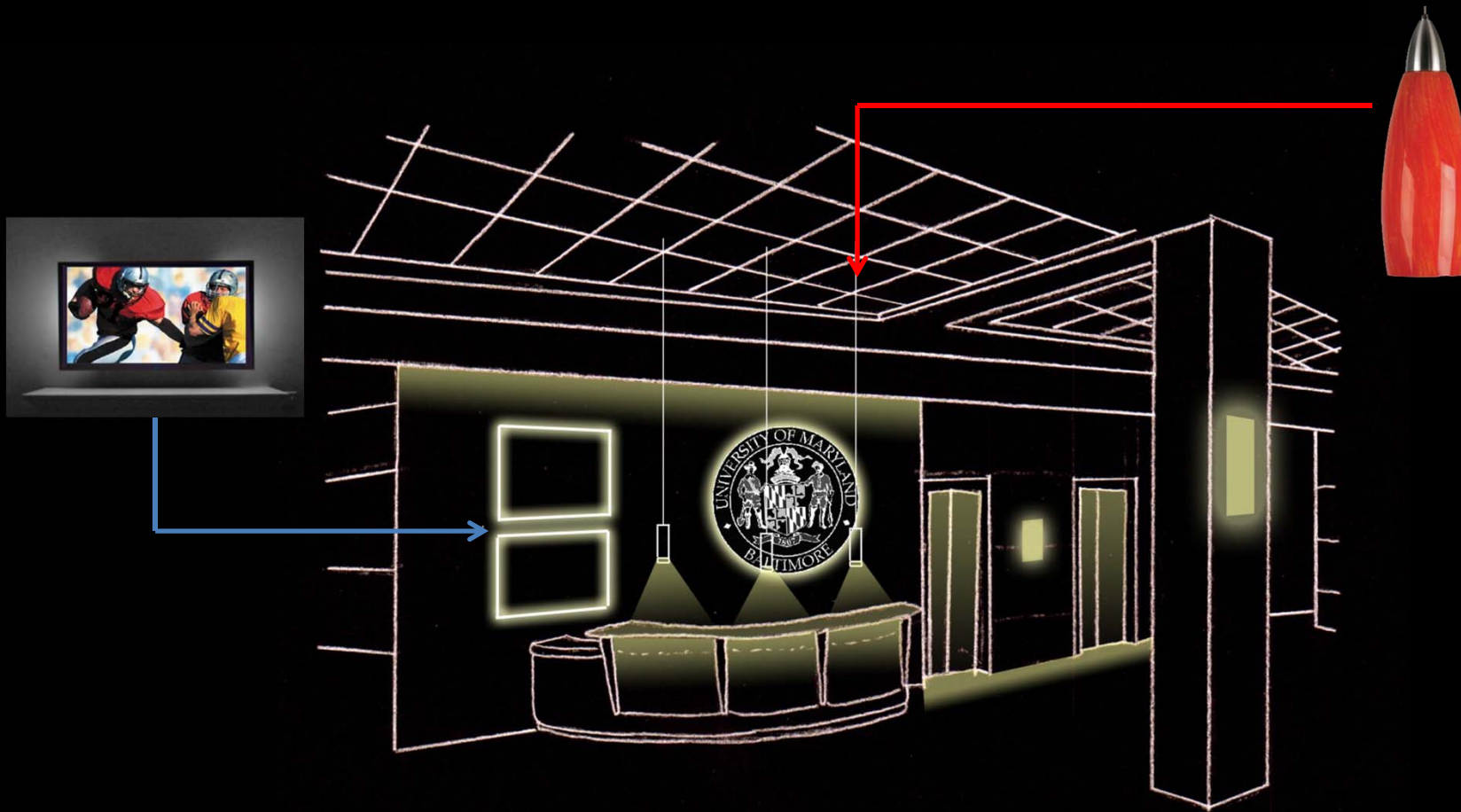
Main Lobby – Information Desk



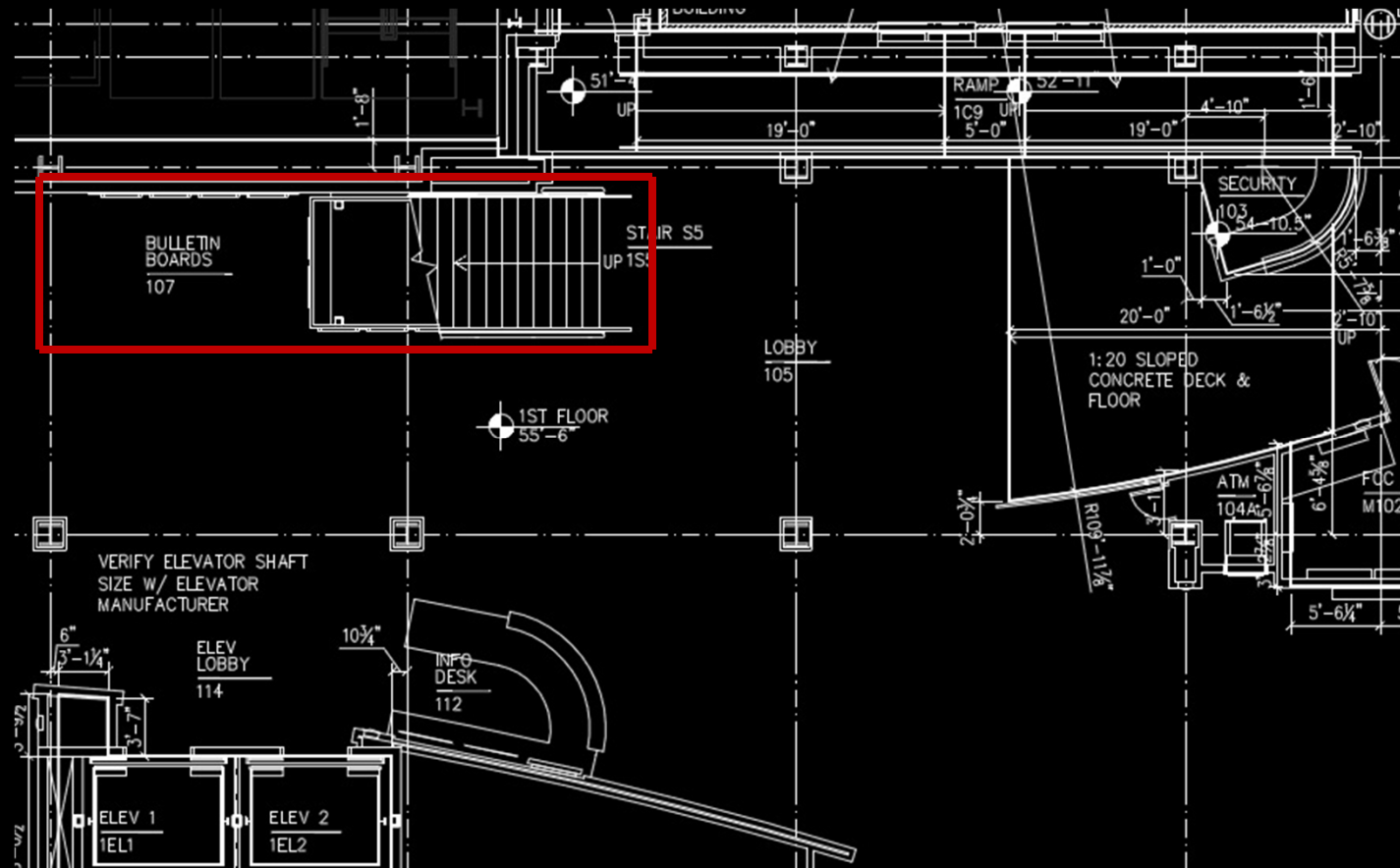
Main Lobby – Information Desk



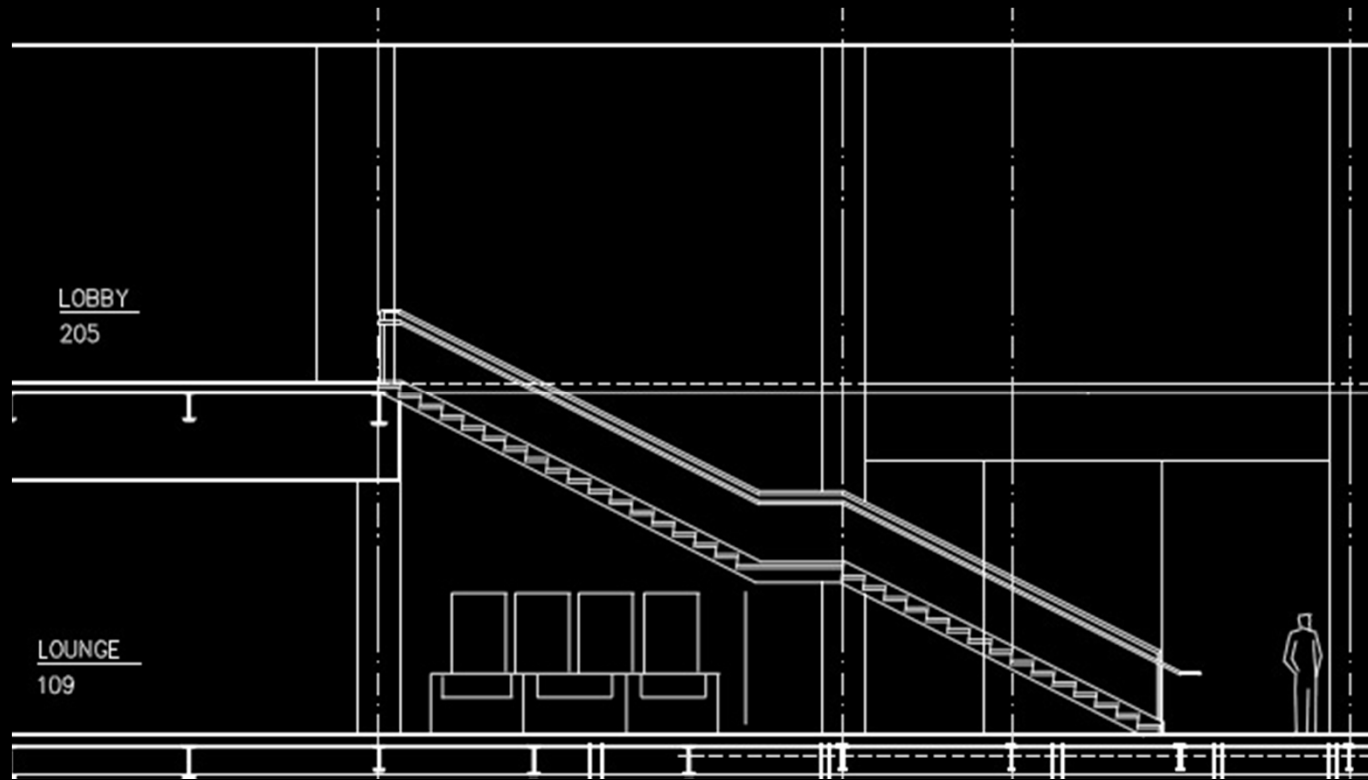
Main Lobby – Information Desk



Main Lobby – Stairs and Seating Area



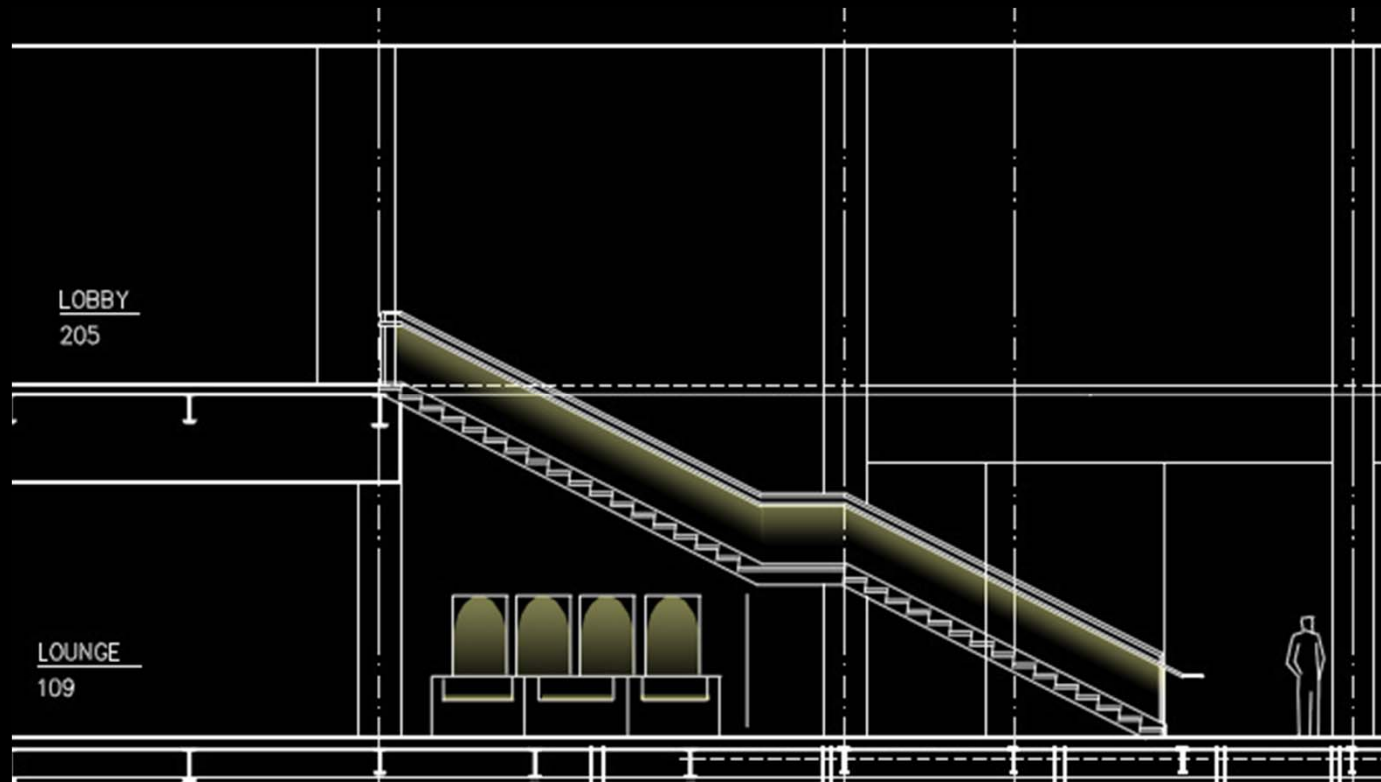
Main Lobby – Stairs and Seating Area



Main Lobby – Stairs and Seating Area



Main Lobby – Stairs and Seating Area



Main Lobby – Ceiling



Main Lobby – Ceiling



Main Lobby – Ceiling



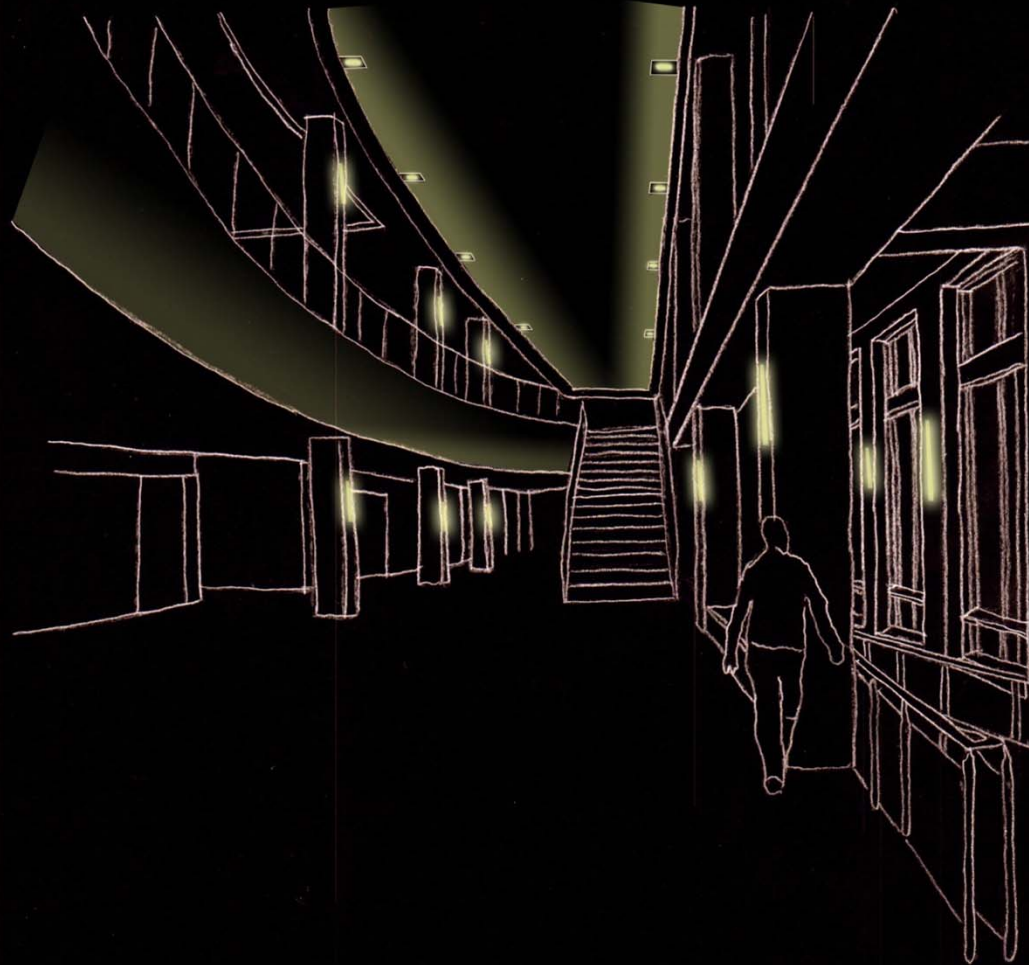
Main Lobby – Ceiling



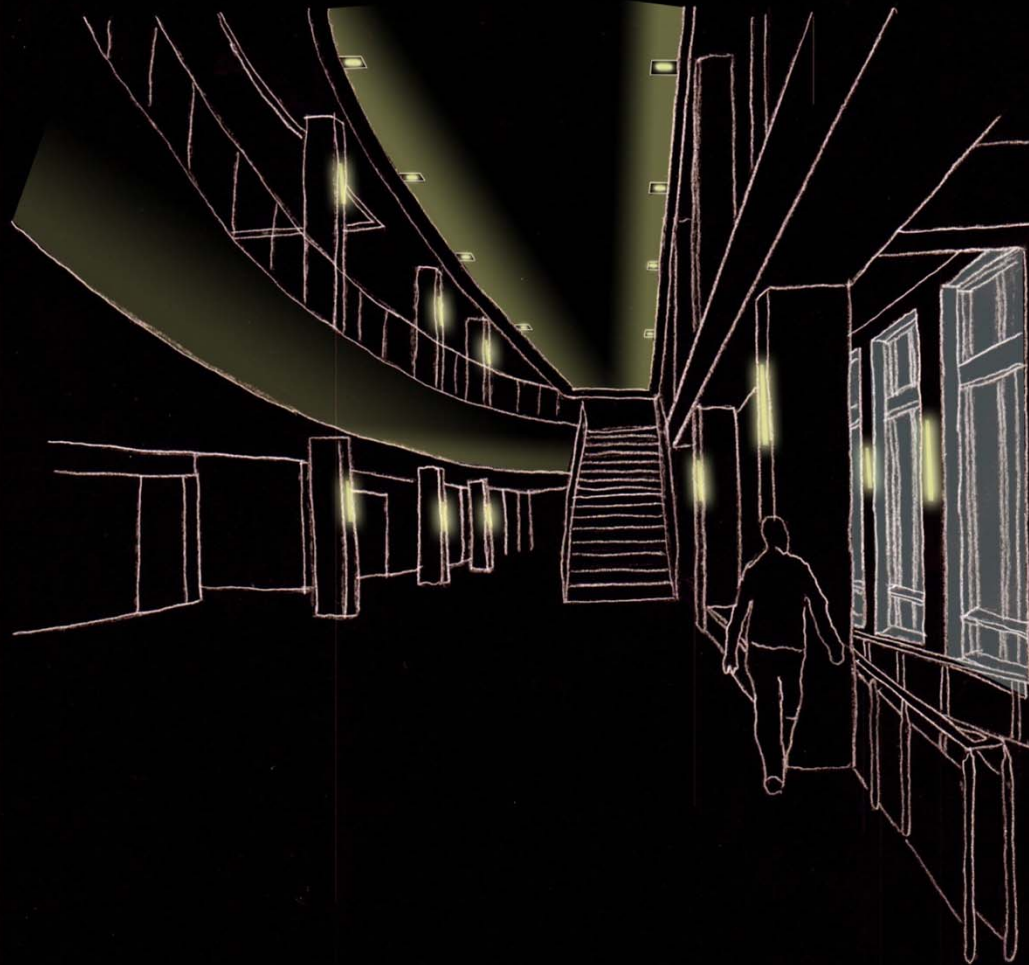
Main Lobby – Ceiling



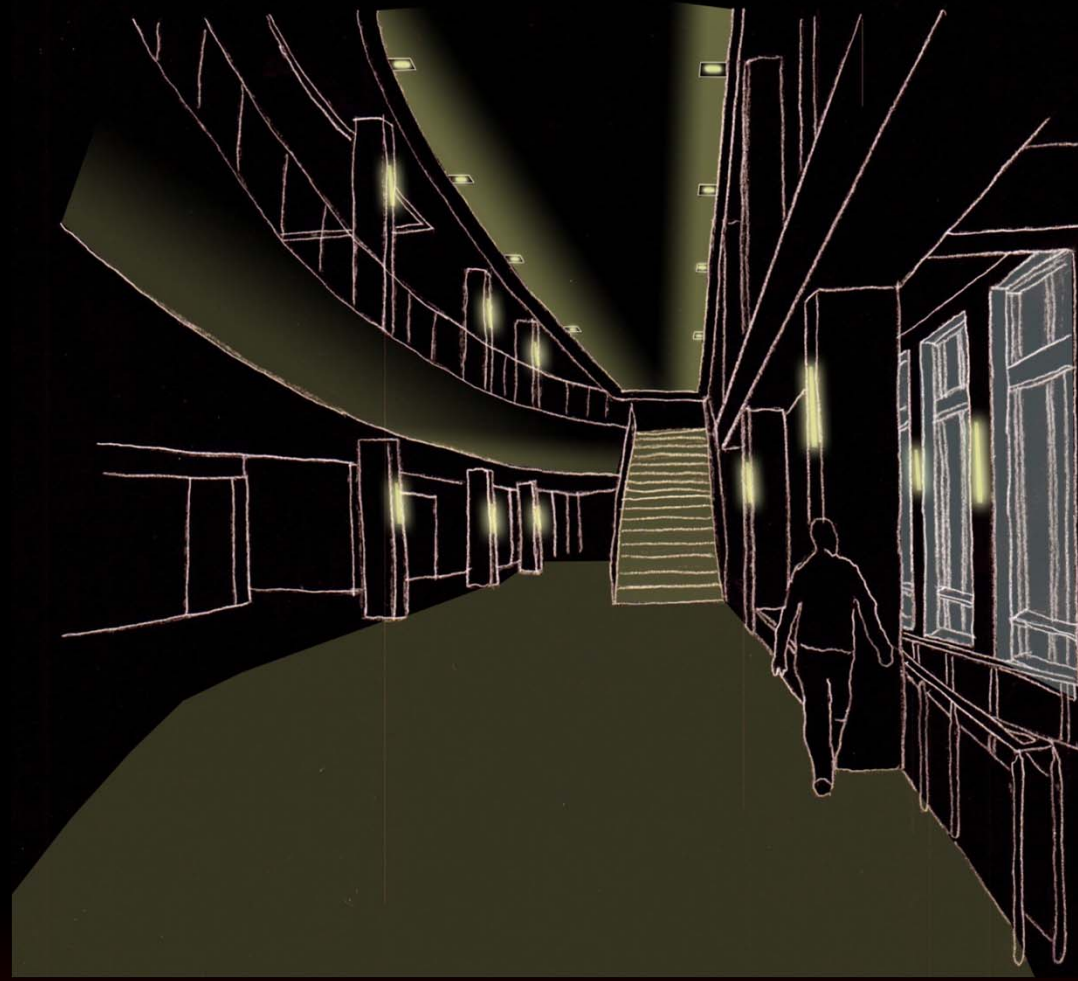
Main Lobby – Ceiling



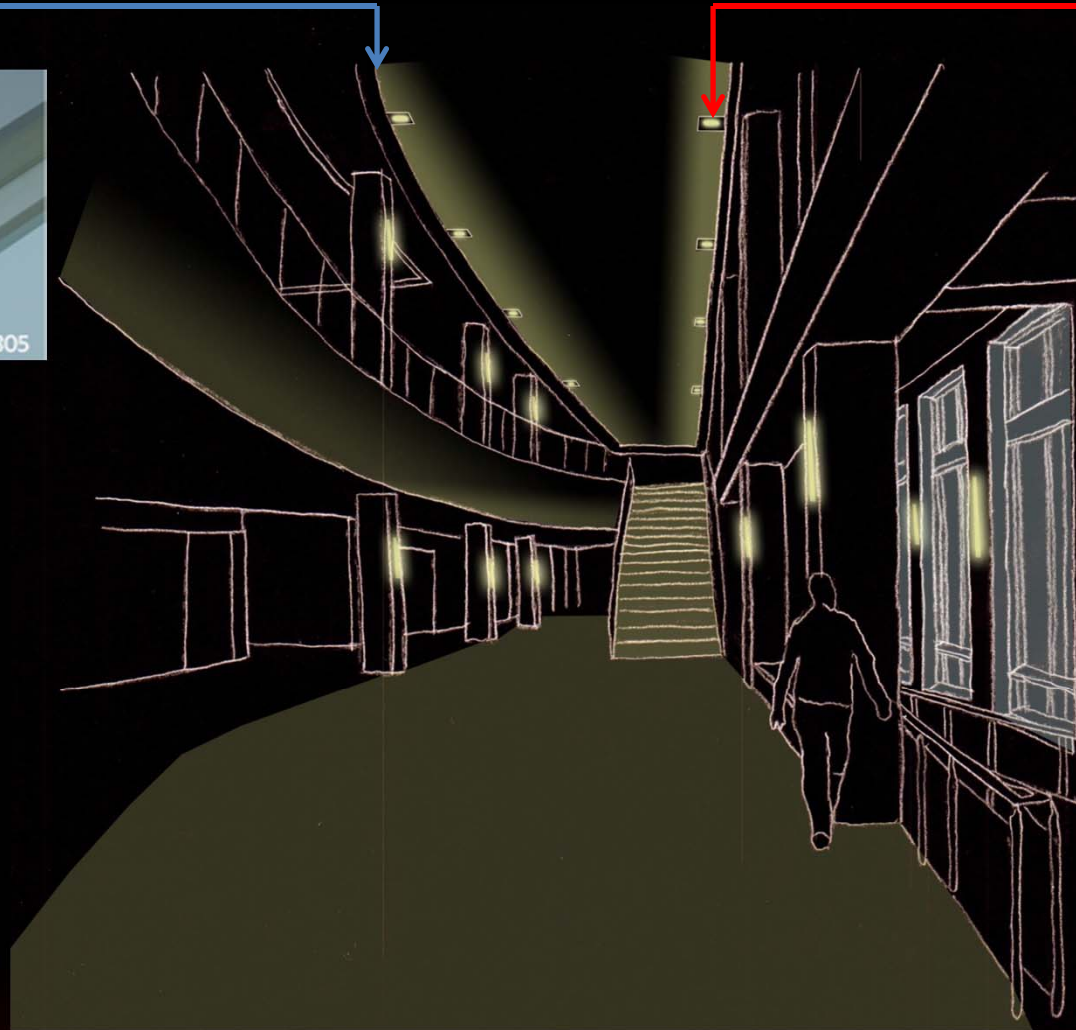
Main Lobby – Ceiling



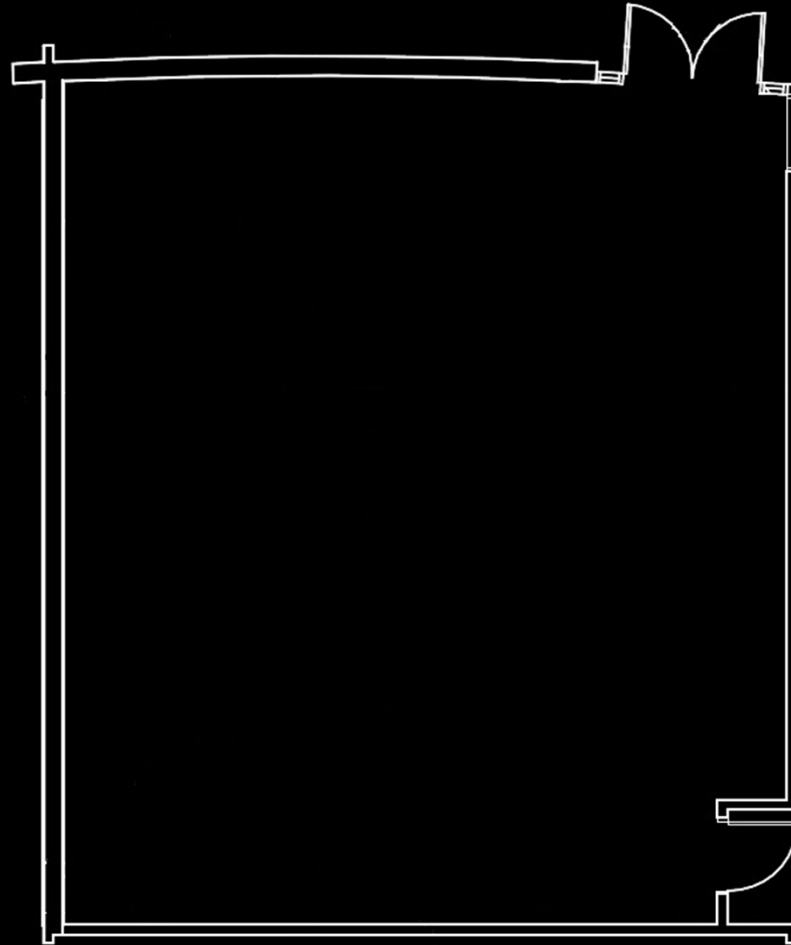
Main Lobby – Ceiling



Main Lobby – Ceiling



Classroom



Classroom – Design Criteria

- **Dynamic Visual Environment**
Classroom vs. Meeting
- **Provide Adequate Light for Visual Tasks**
Reading – 30 fc
Writing – 30 fc
Presentations
VDT
- **Accent Focal Walls**
Front of Room
Side Wall

Classroom – Design Features

- Podium
- Projection Screen
- Psychological Impression
 - Spaciousness vs. Closure

Classroom – Psychological Impression

Spaciousness

Peripheral Lighting

Bright = Appear Large

Pleasant

Classroom, Meetings

Closure

Ceiling Lighting Only

Dark = Appear Small

Confinement

Presentations

Classroom – Psychological Impression

Spaciousness

Peripheral Lighting

Bright = Appear Large

Pleasant

Classroom, Meetings



Closure

Ceiling Lighting Only

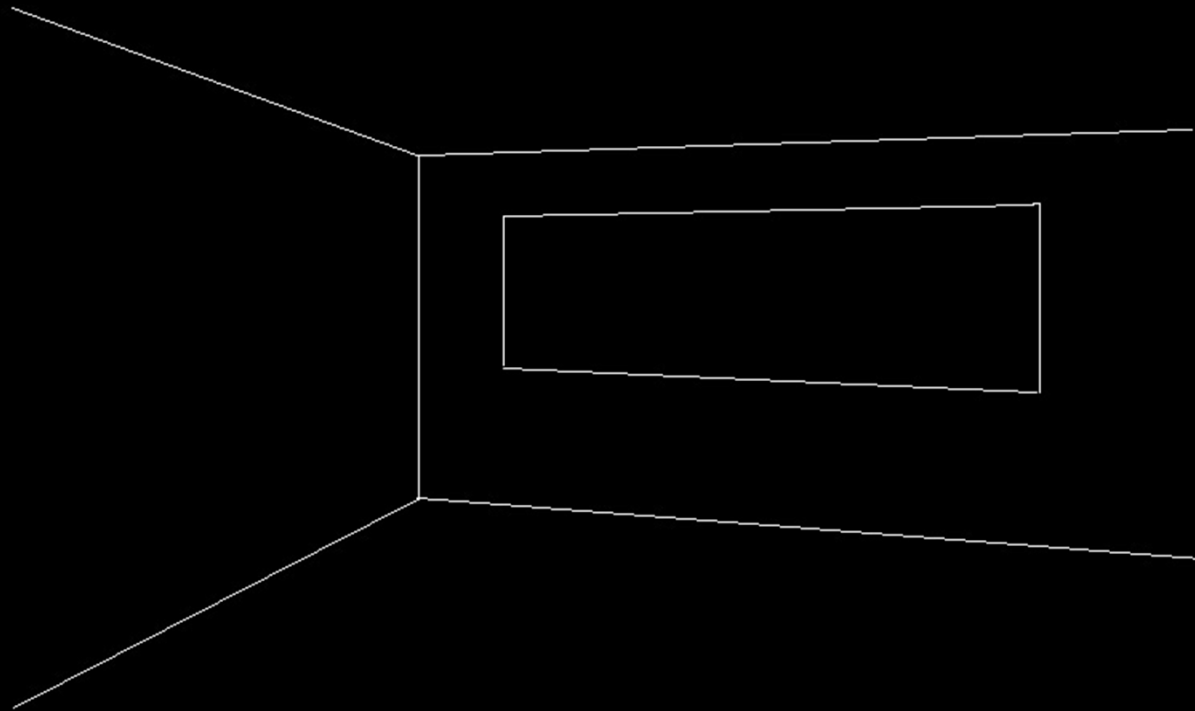
Dark = Appear Small

Confinement

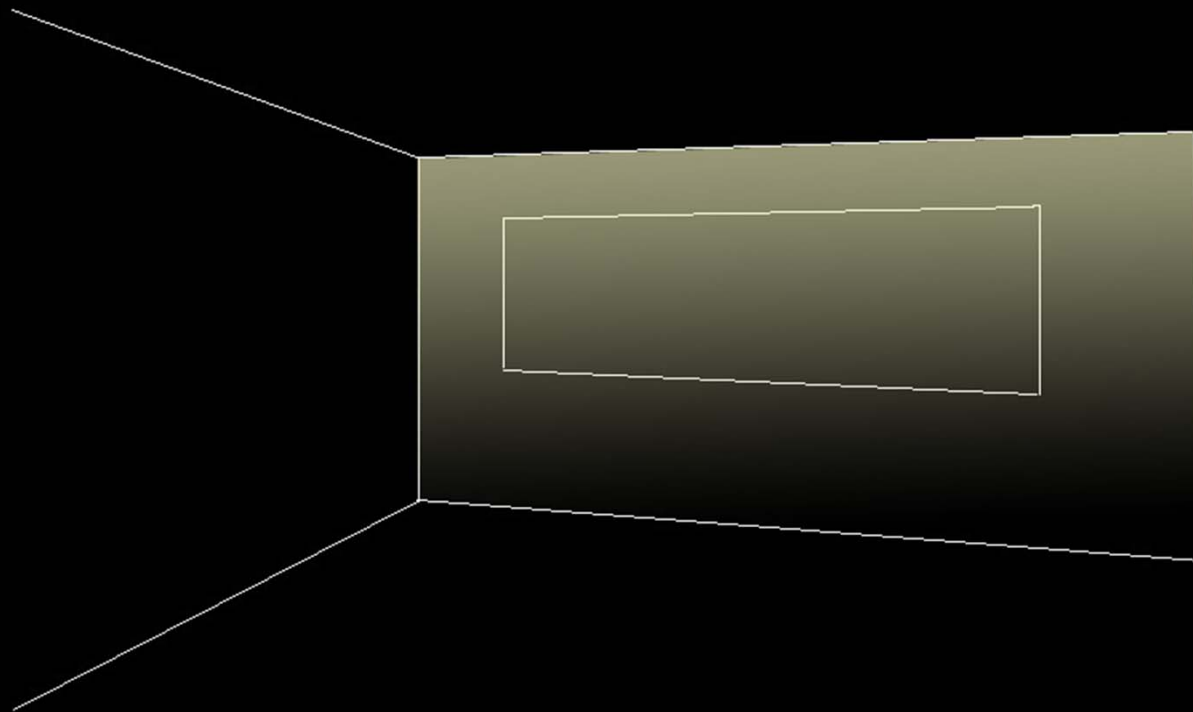
Presentations



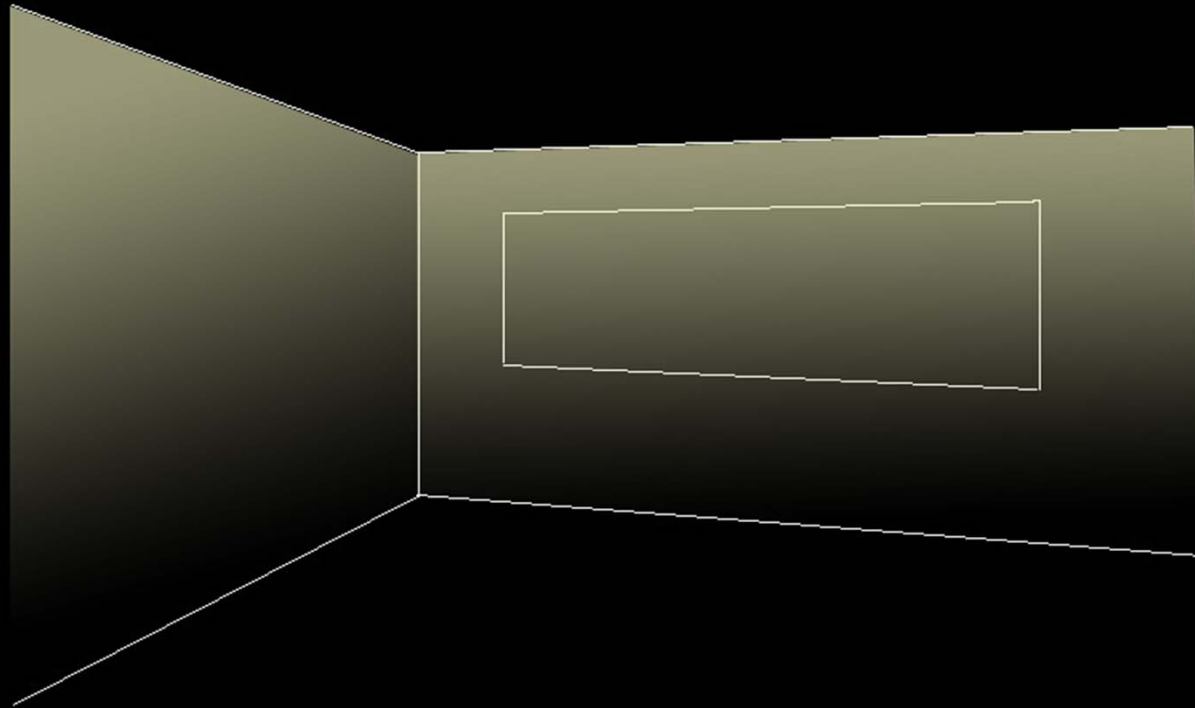
Classroom – Spaciousness



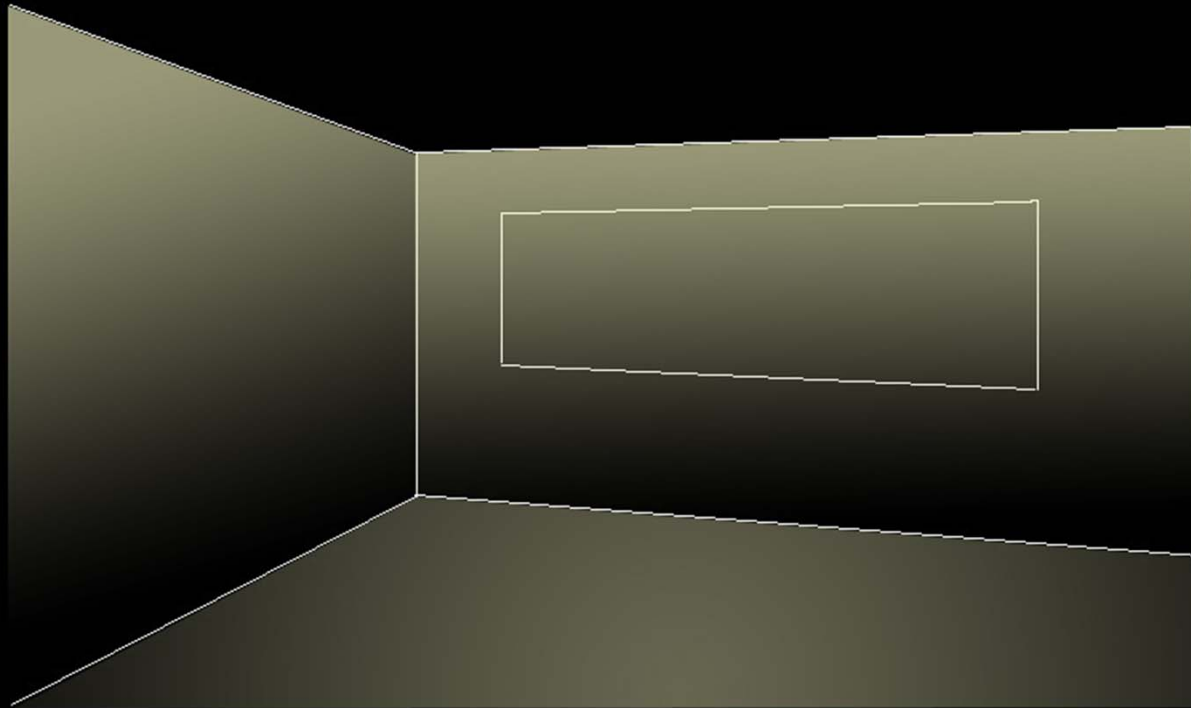
Classroom – Spaciousness



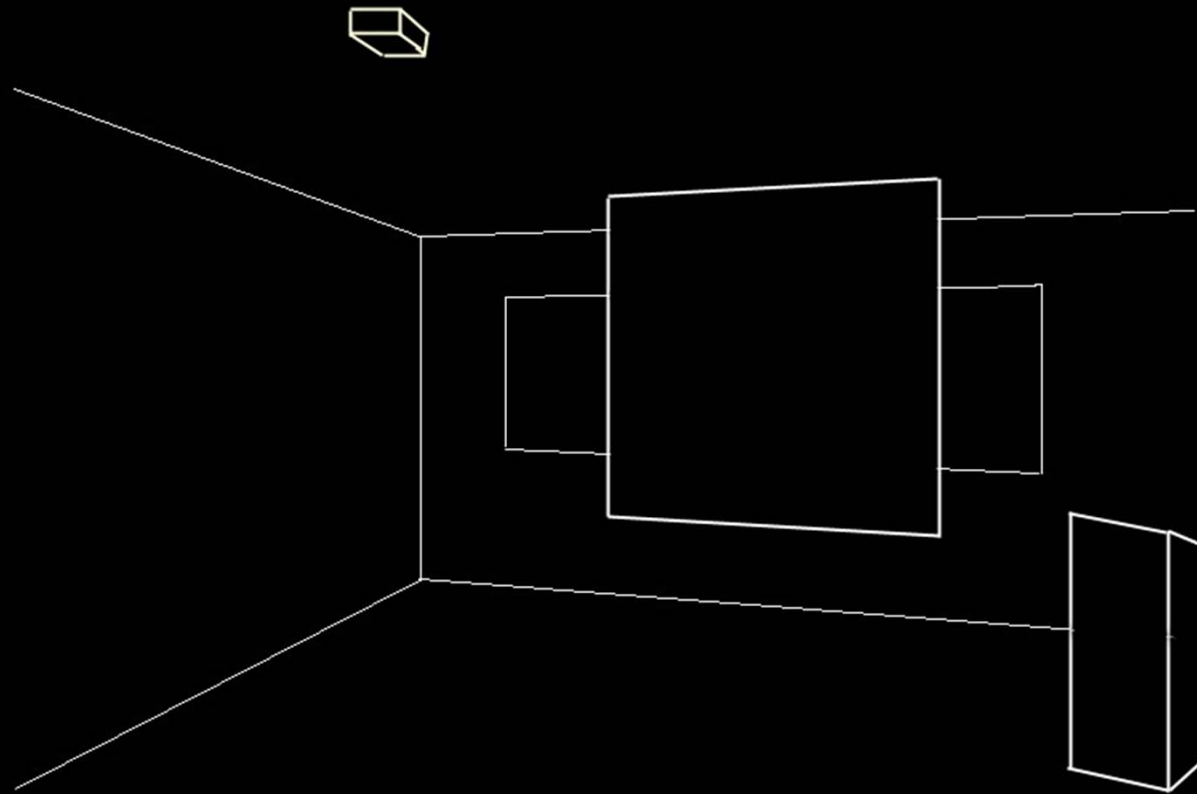
Classroom – Spaciousness



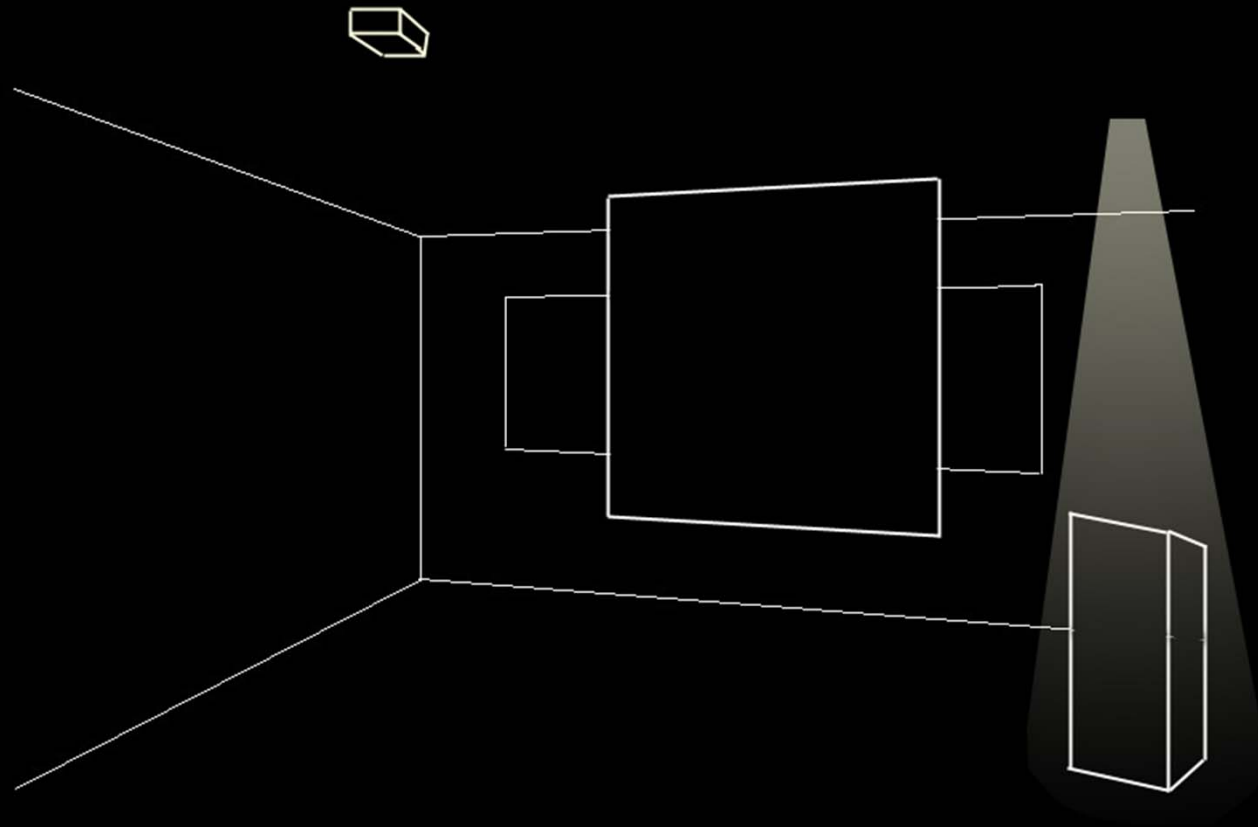
Classroom – Spaciousness



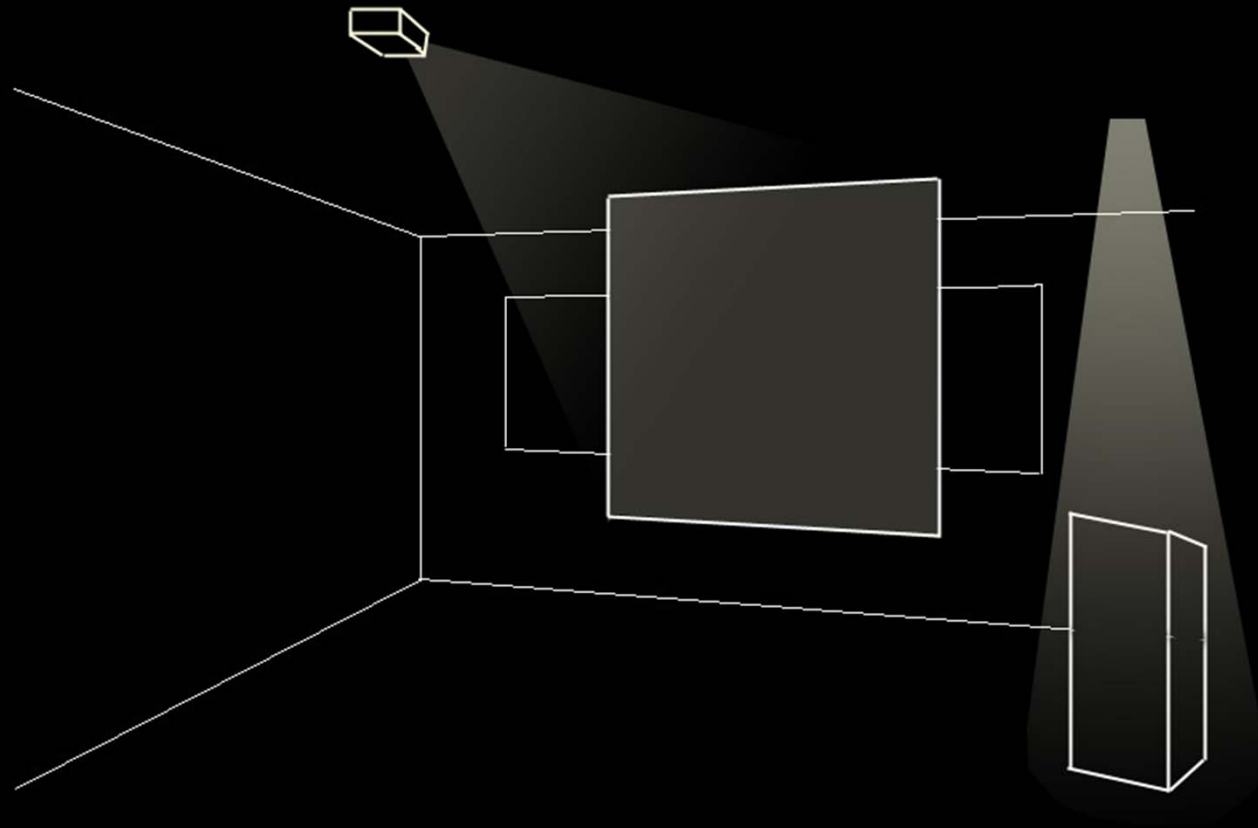
Classroom – Closure



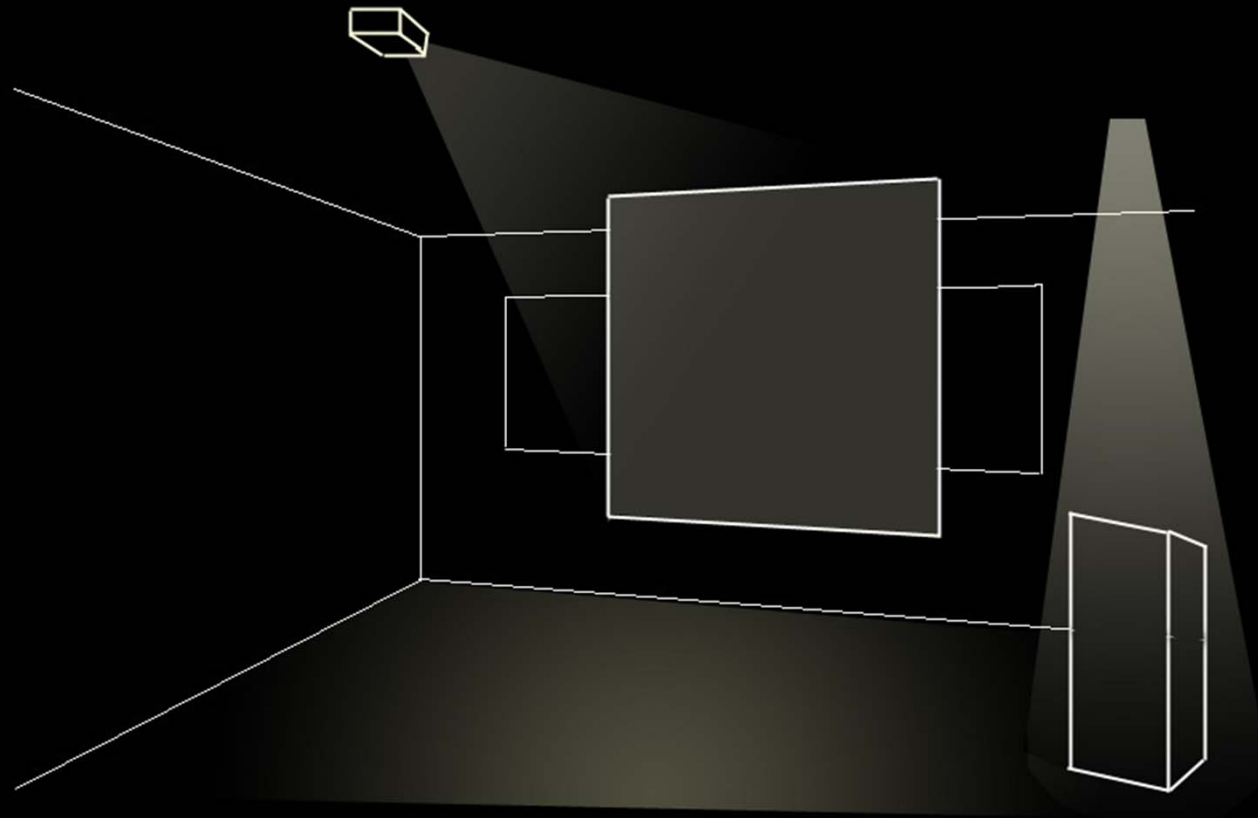
Classroom – Closure



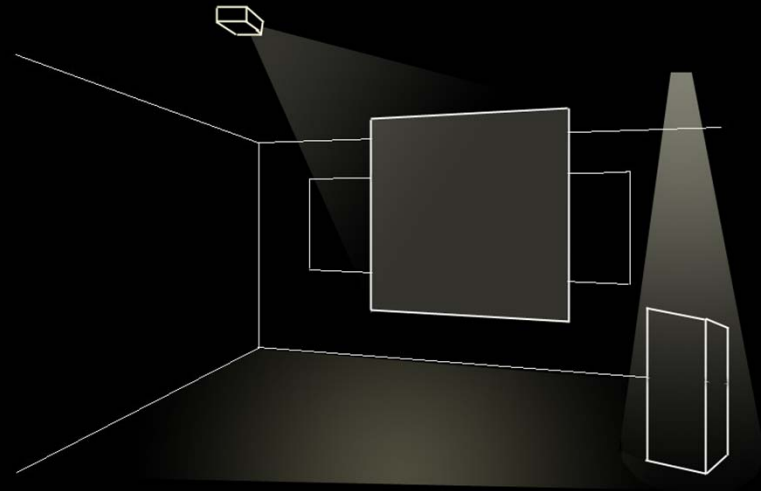
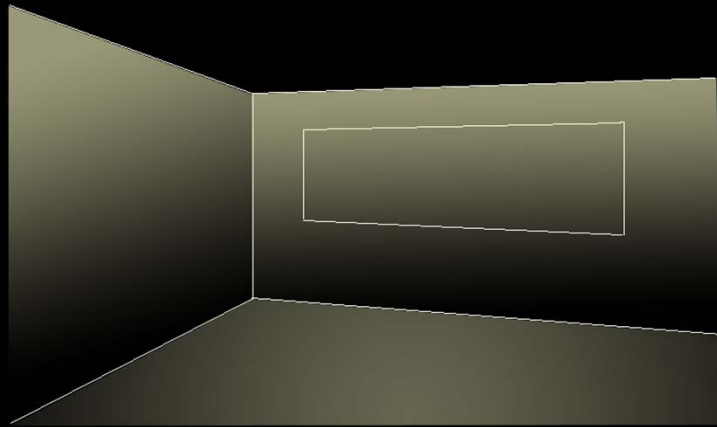
Classroom – Closure



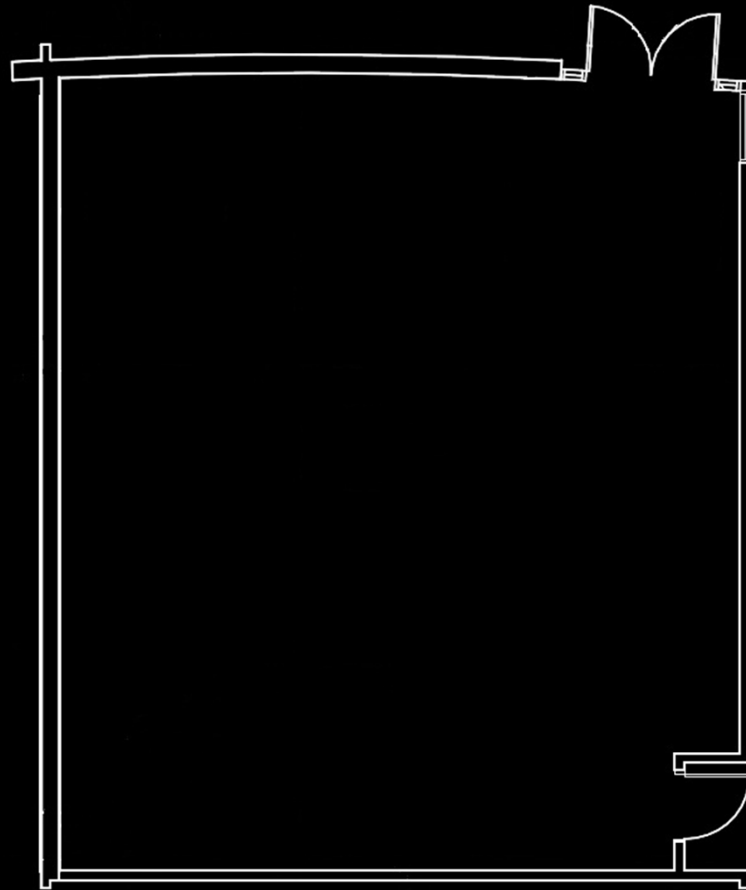
Classroom – Closure



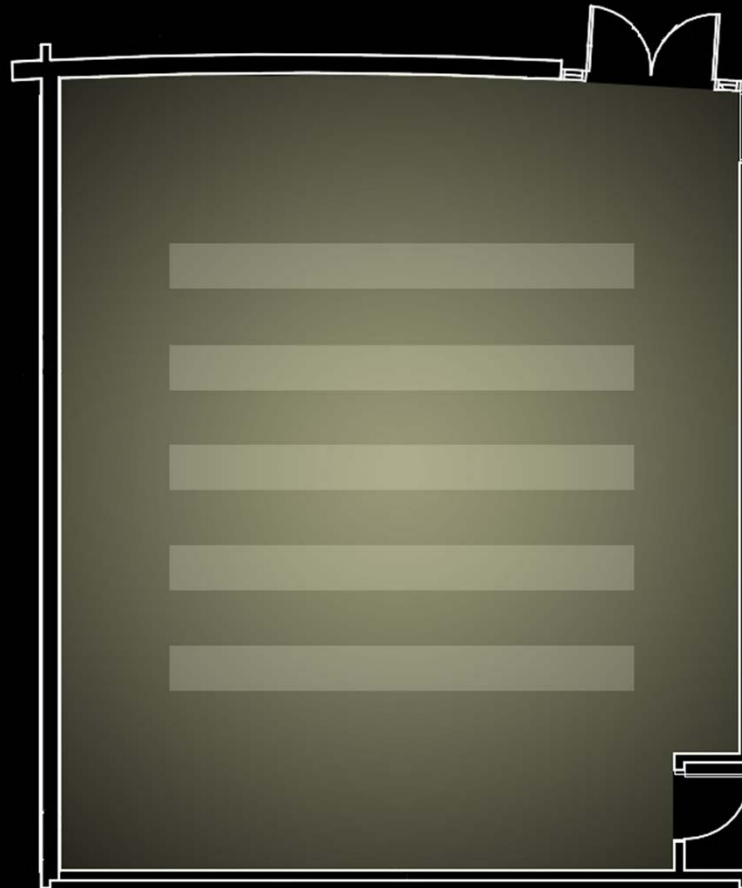
Classroom – Spaciousness vs. Closure



Classroom – Uniformity



Classroom – Uniformity



Natatorium



Natatorium – Design Criteria

- Glare on Water
Direct and Reflected
- Flexibility of Lighting Levels
Recreation/Fitness – 30 fc
Instructional Swim – 50 fc
Safety
- Daylight Integration
North Glazing
Skylights?
- Environment
Strong Chemicals
High Humidity

Natatorium – Design Features

- 25m, 5 Lane Lap Pool
- Curved North Glazing Façade
- Exposed Truss System

- 3 Design Concepts
 - Direct
 - Indirect
 - Direct/Indirect

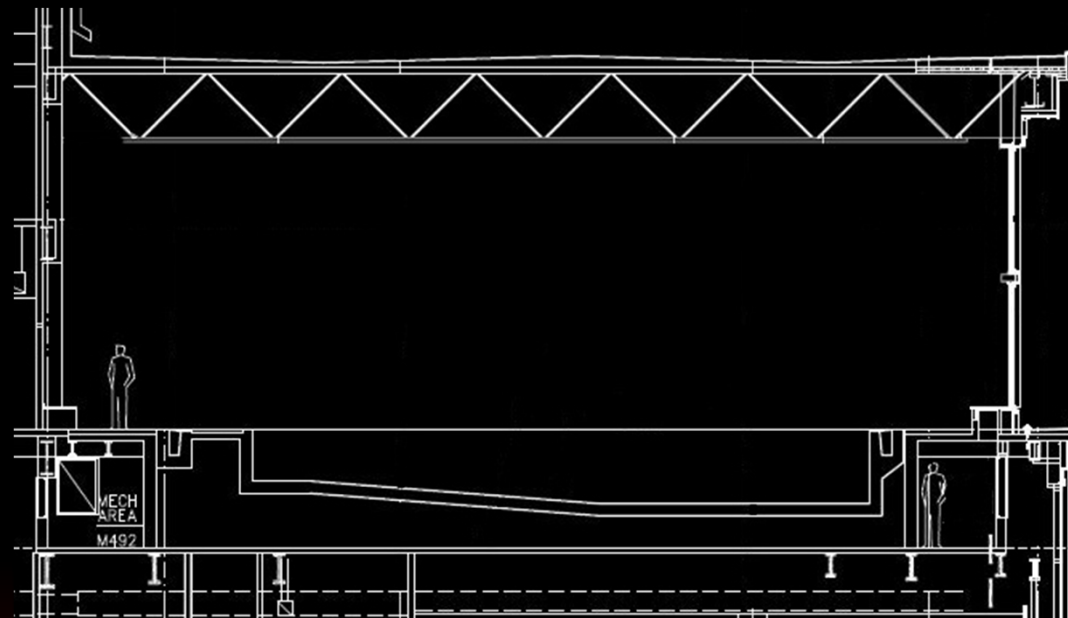
Natatorium – Direct Lighting

Pros

- Lowest Initial Cost
- Best Distribution
- Most Efficient

Cons

- Direct Glare on Water
- Lamp Replacement
- Space Appearance



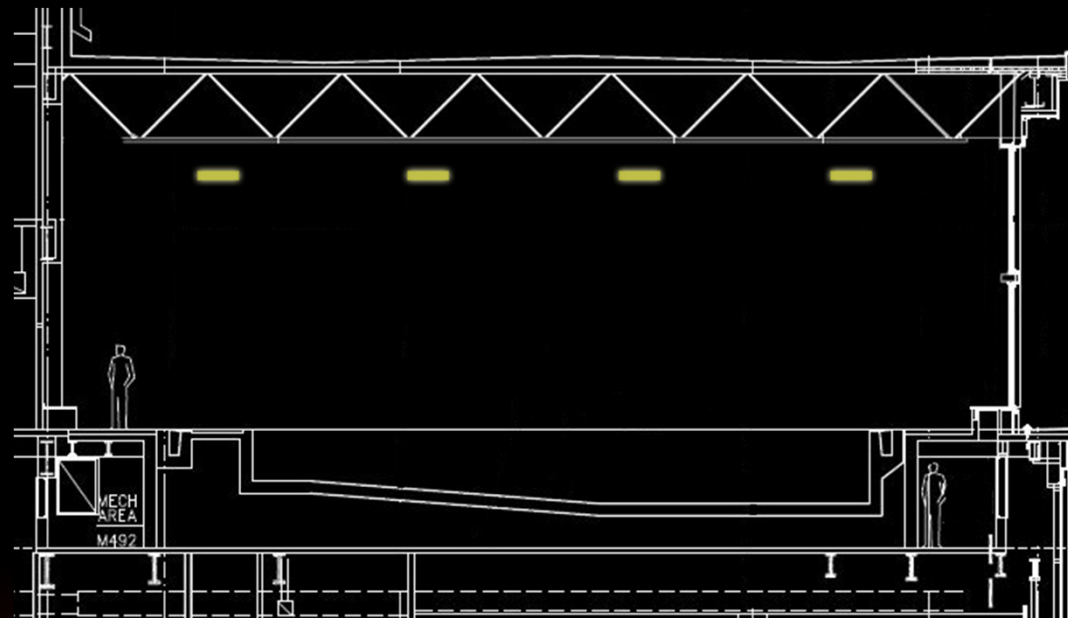
Natatorium – Direct Lighting

Pros

- Lowest Initial Cost
- Best Distribution
- Most Efficient

Cons

- Direct Glare on Water
- Lamp Replacement
- Space Appearance



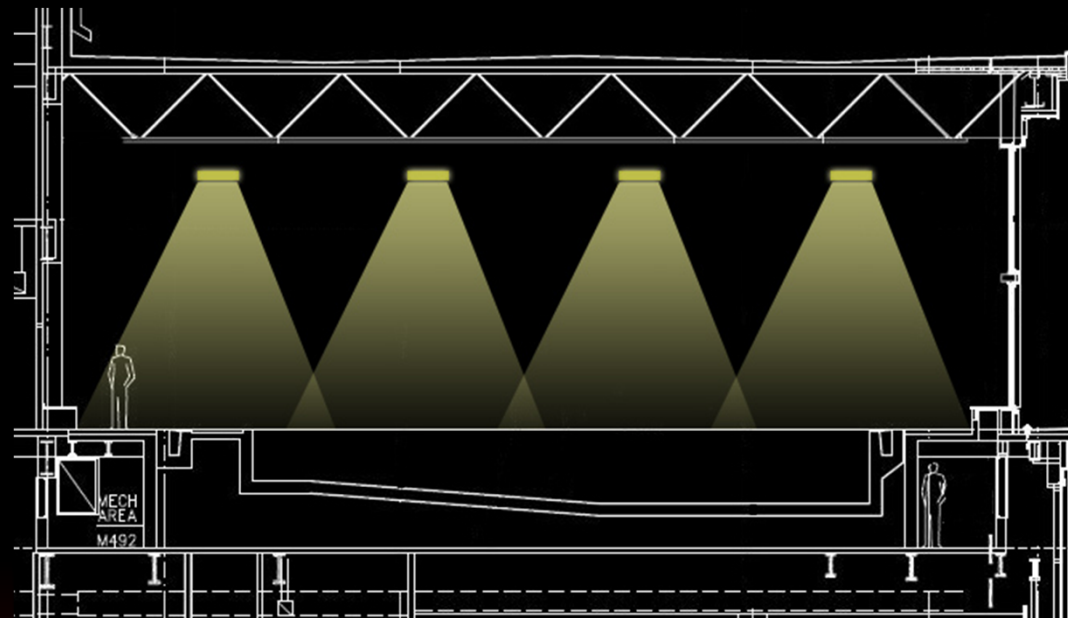
Natatorium – Direct Lighting

Pros

- Lowest Initial Cost
- Best Distribution
- Most Efficient

Cons

- Direct Glare on Water
- Lamp Replacement
- Space Appearance



Natatorium – Direct Lighting

Pros

- Lowest Initial Cost
- Best Distribution
- Most Efficient

Cons

- Direct Glare on Water
- Lamp Replacement
- Space Appearance



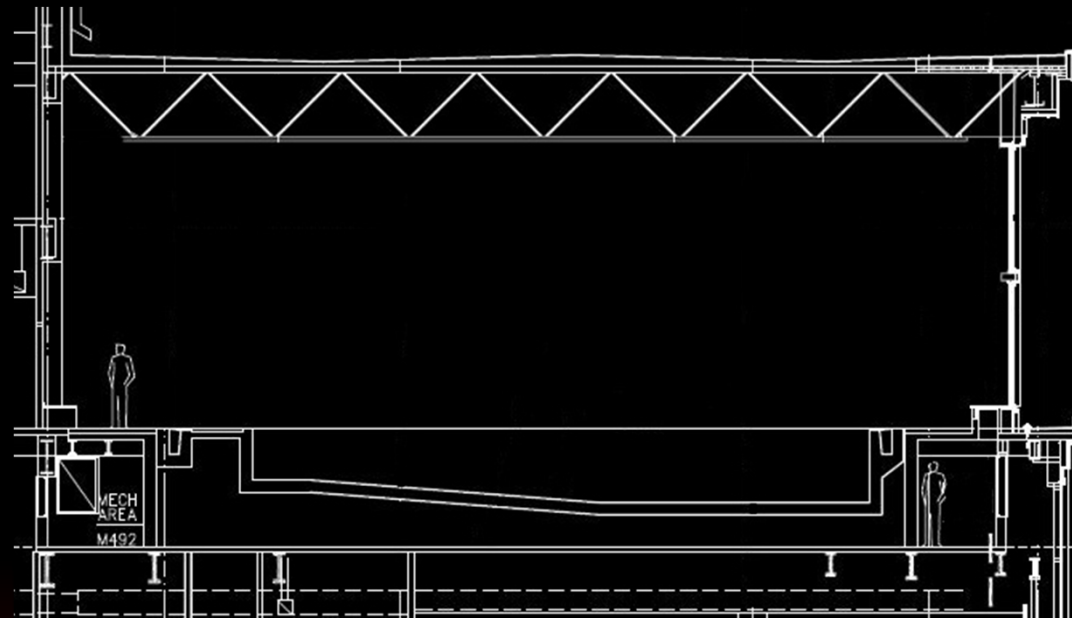
Natatorium – Indirect Lighting

Pros

Reduced Direct Glare
Perimeter Equipment

Cons

Costs More
Ceiling Luminance



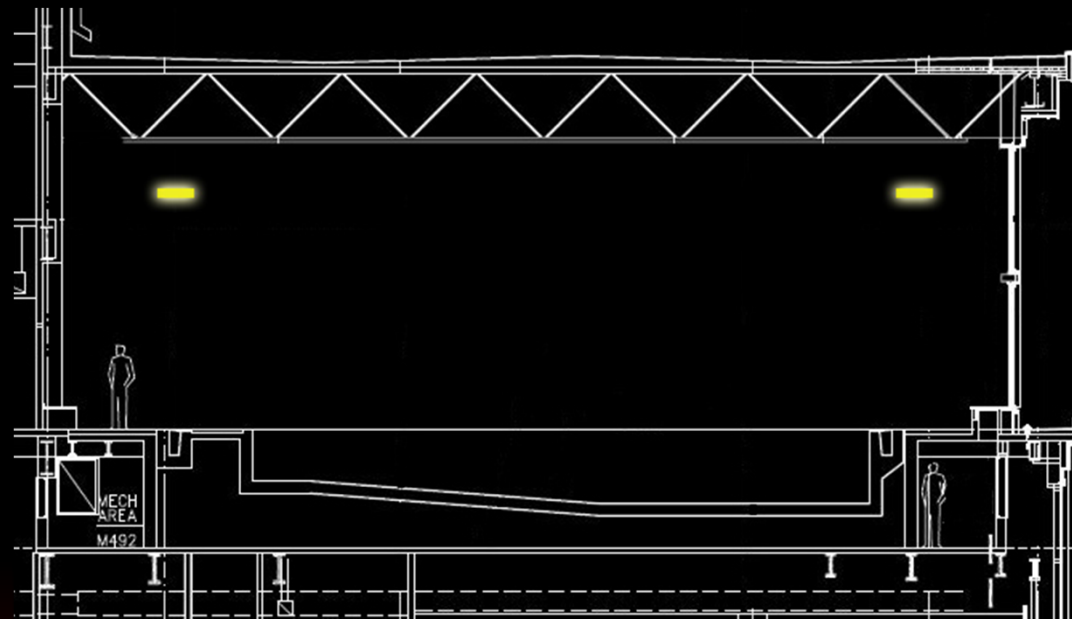
Natatorium – Indirect Lighting

Pros

Reduced Direct Glare
Perimeter Equipment

Cons

Costs More
Ceiling Luminance



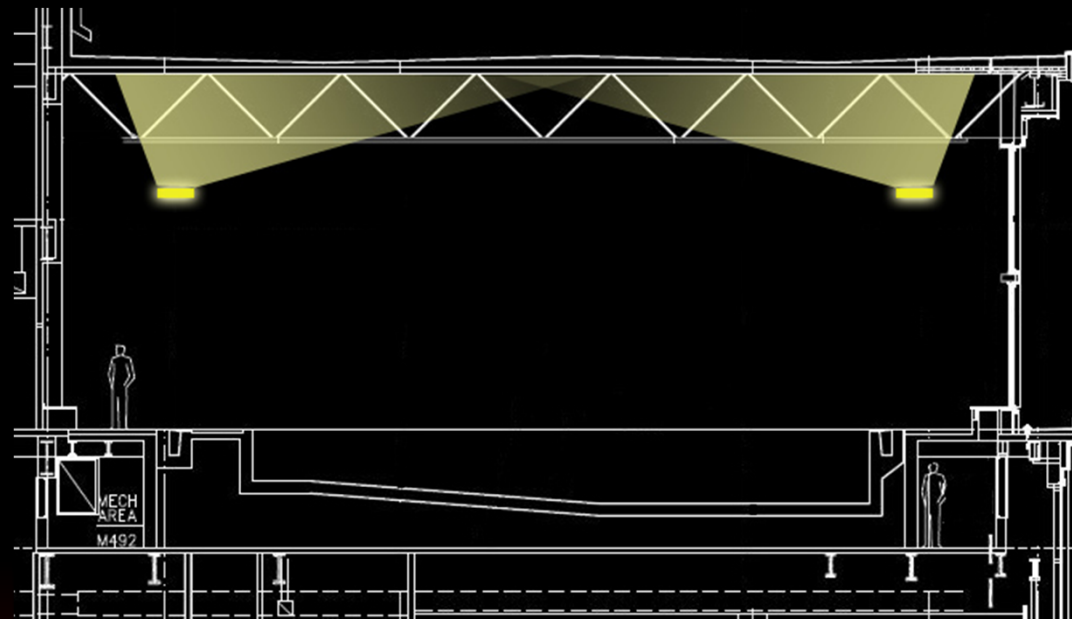
Natatorium – Indirect Lighting

Pros

Reduced Direct Glare
Perimeter Equipment

Cons

Costs More
Ceiling Luminance



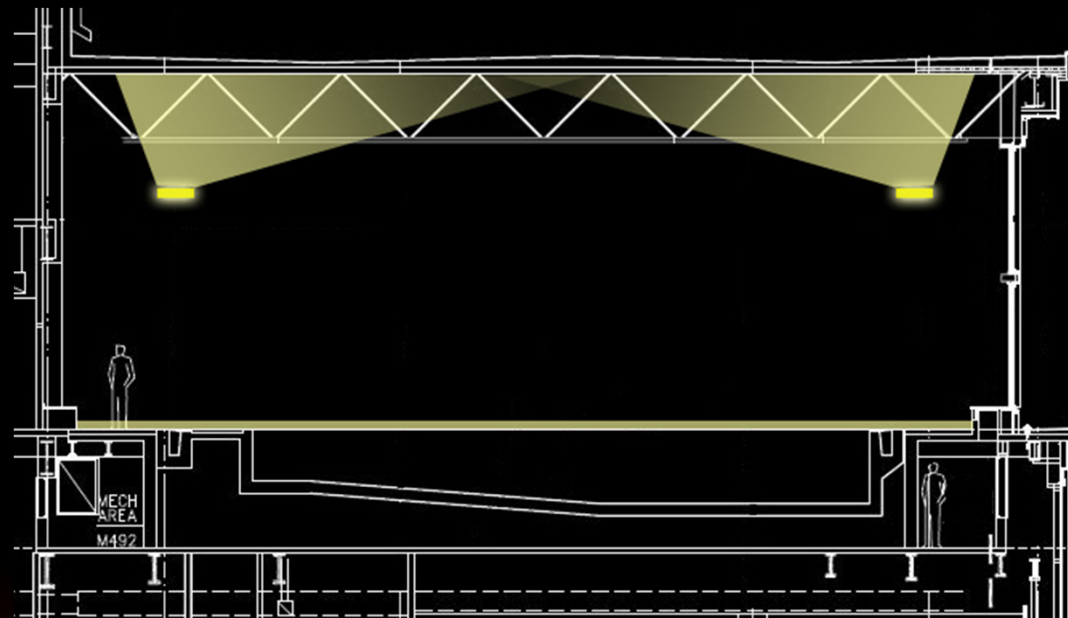
Natatorium – Indirect Lighting

Pros

Reduced Direct Glare
Perimeter Equipment

Cons

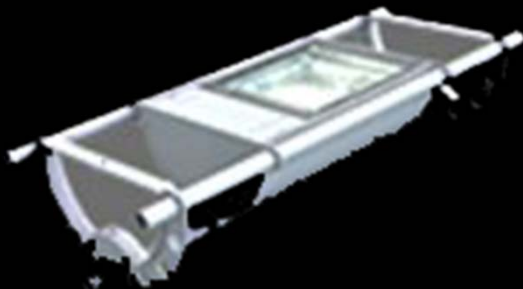
Costs More
Ceiling Luminance



Natatorium – Indirect Lighting

Pros

Reduced Direct Glare
Perimeter Equipment



Cons

Costs More
Ceiling Luminance



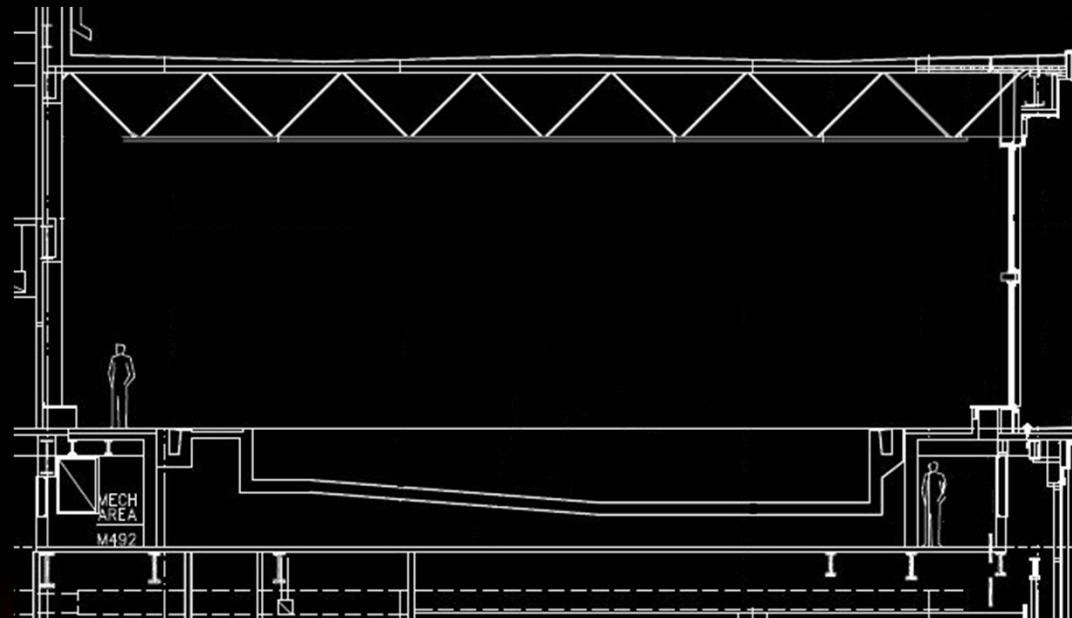
Natatorium – Direct/Indirect Lighting

Pros

Reduced Direct Glare
Perimeter Equipment

Cons

Costs More
Ceiling Luminance



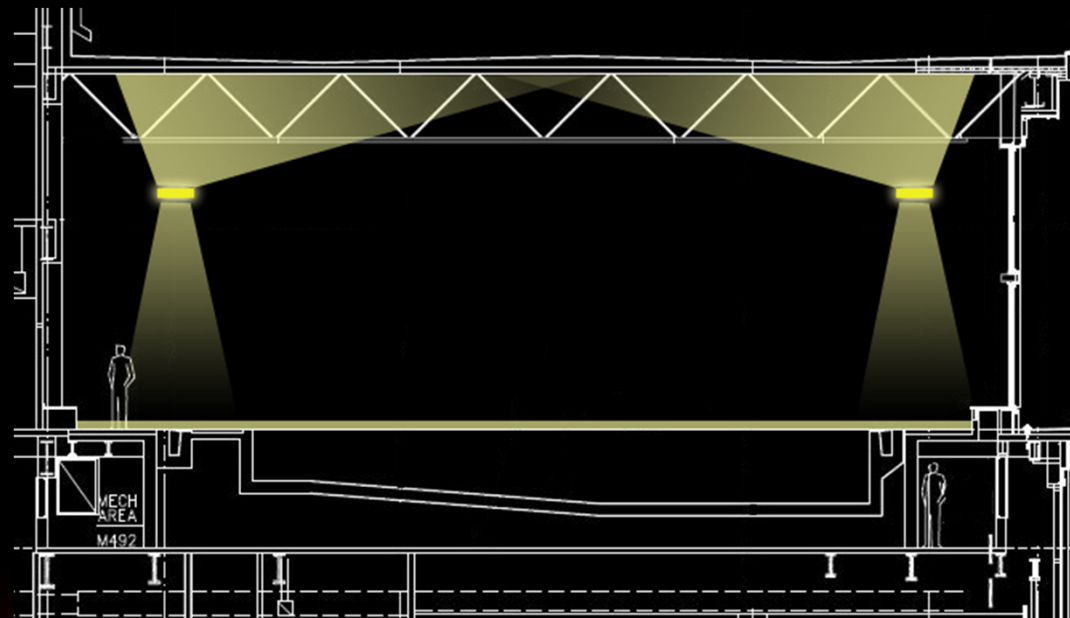
Natatorium – Direct/Indirect Lighting

Pros

Reduced Direct Glare
Perimeter Equipment

Cons

Costs More
Ceiling Luminance



Natatorium – Direct/Indirect Lighting

Pros

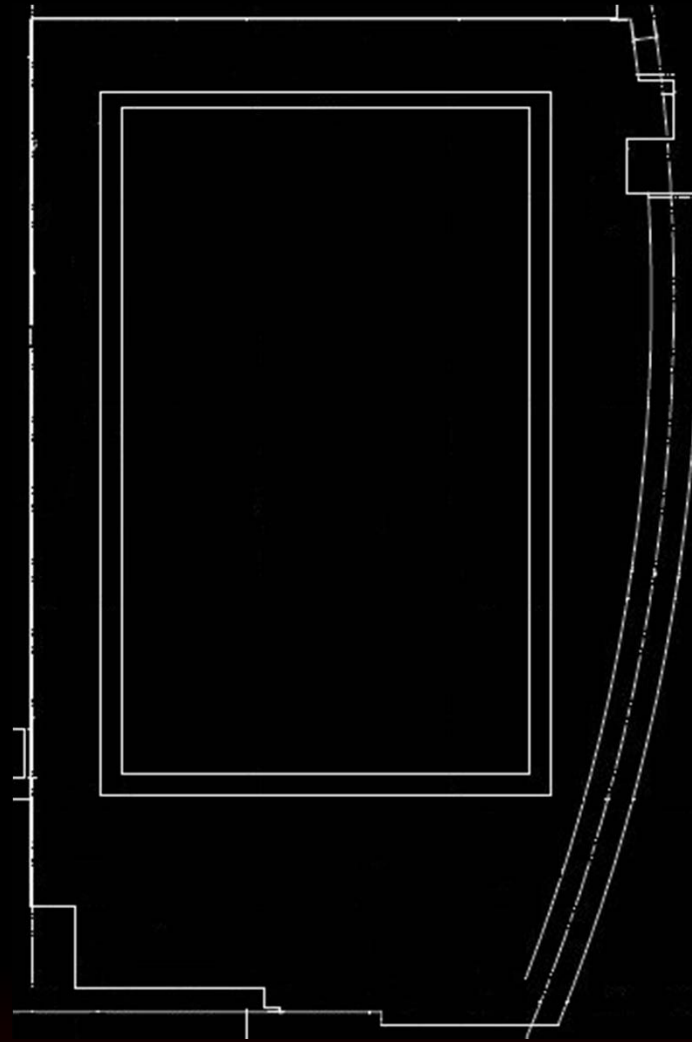
Reduced Direct Glare
Perimeter Equipment

Cons

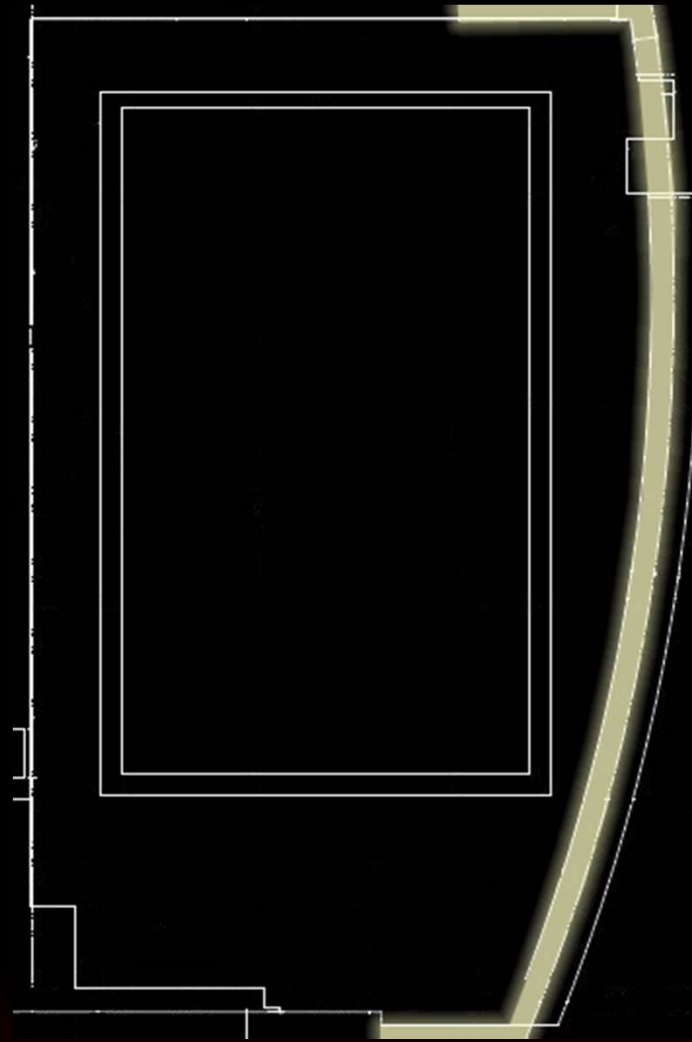
Costs More
Ceiling Luminance



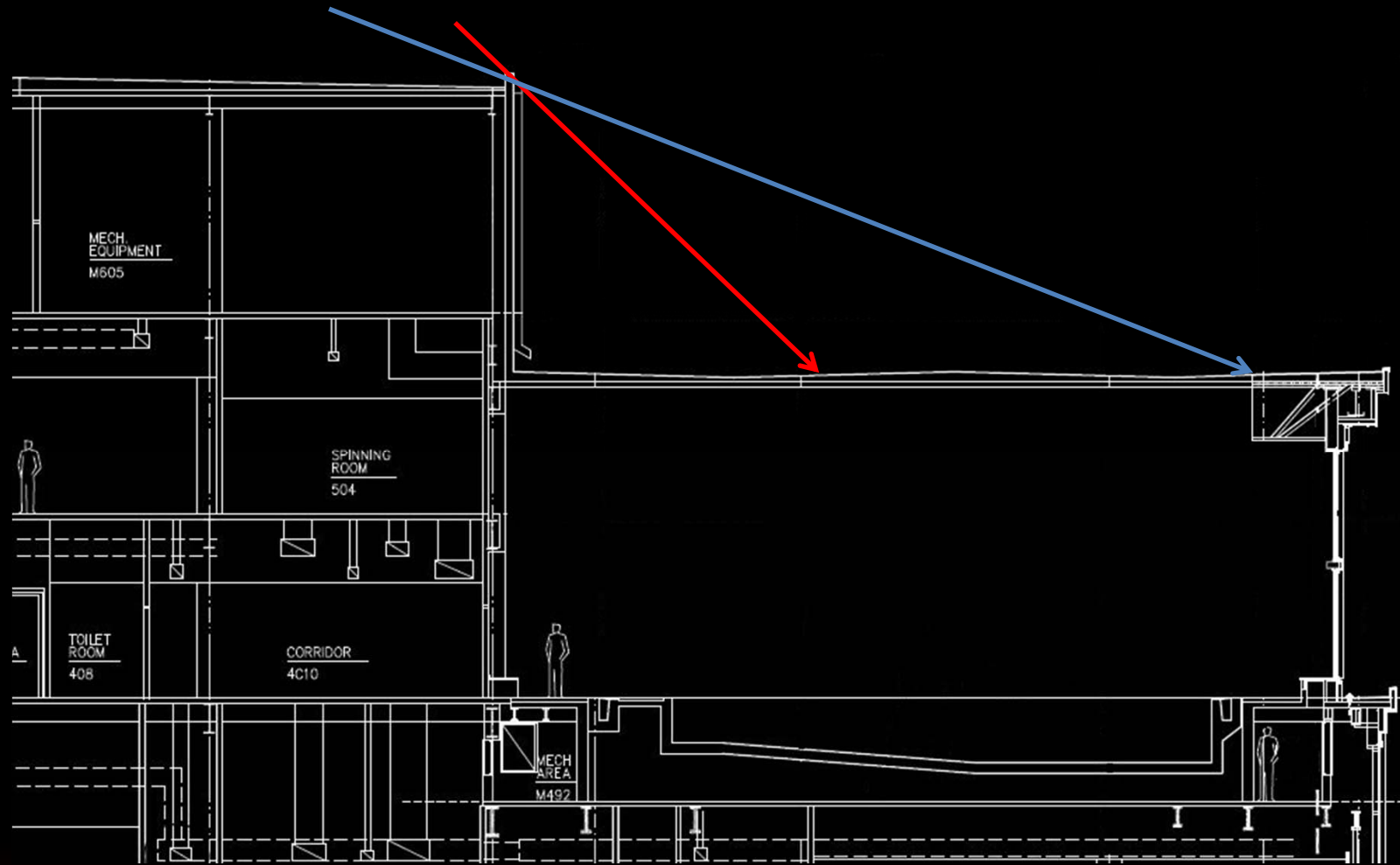
Natatorium – Daylighting



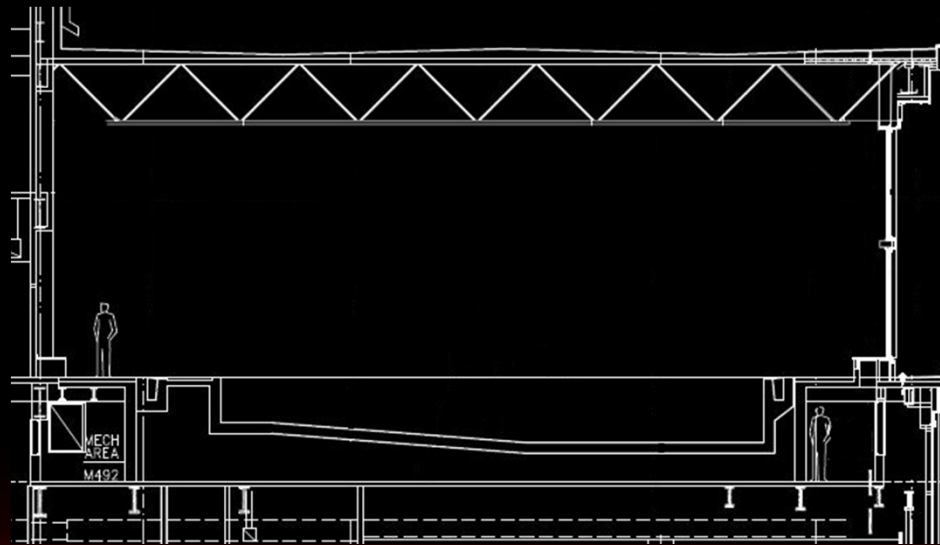
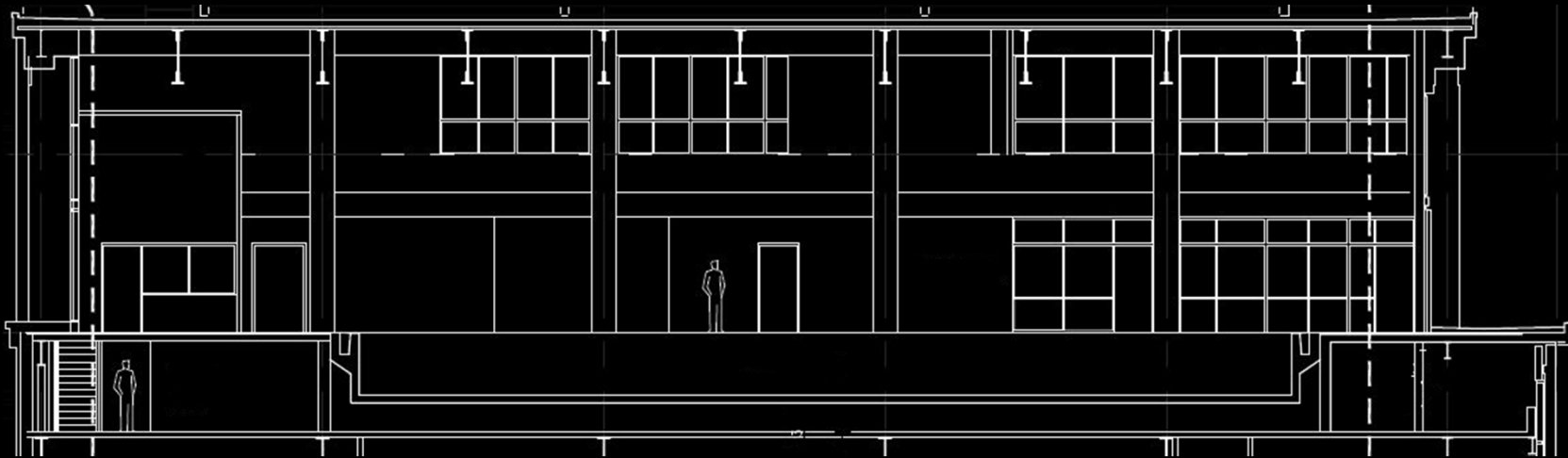
Natorium – Daylighting



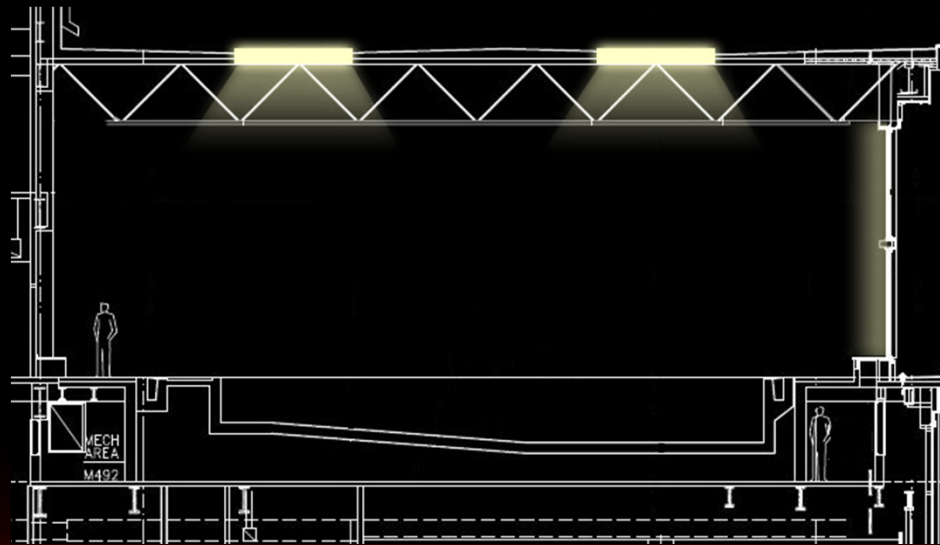
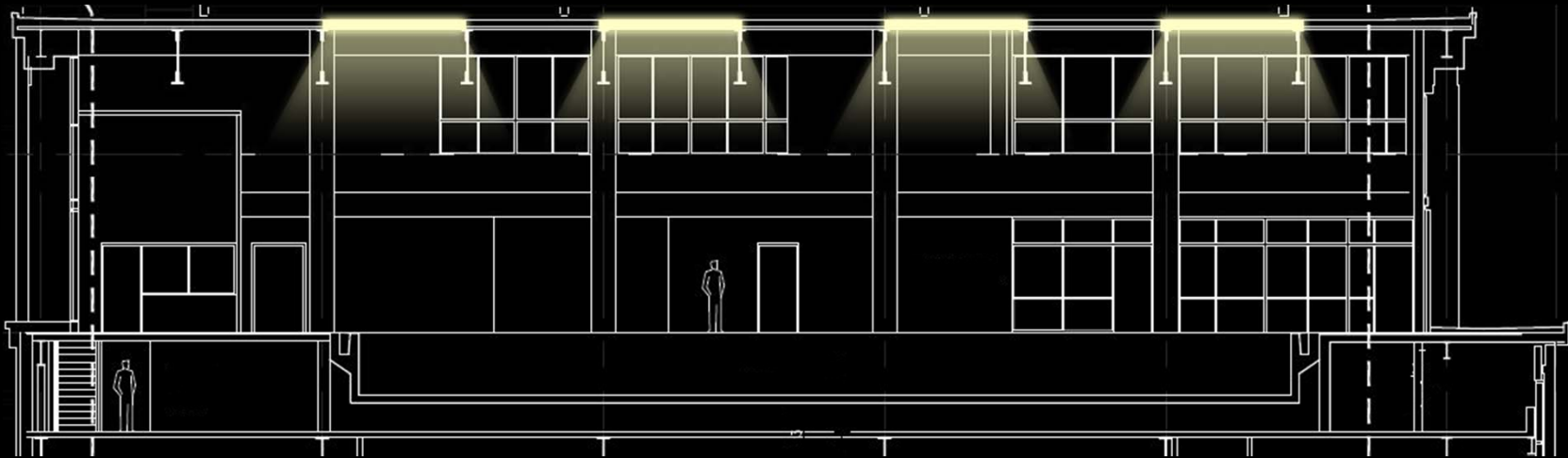
Natatorium – Daylighting



Natatorium – Daylighting



Natatorium – Daylighting



Introduction

North Facade

Main Lobby

Classroom

Natatorium

Thank You!



Comments/Questions