

# The Sterling and Francine Clark Art Institute

Asher Harder

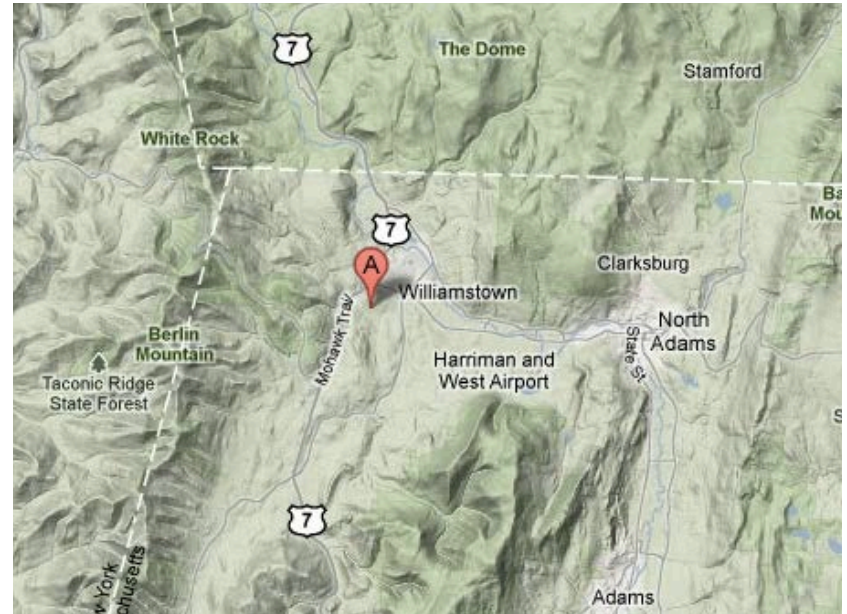
# THE CLARK

## Location:

225 South Street,  
Williamstown, MA

**Setting:** Berkshires

**Building**    Concept    Spaces



# THE CLARK

**Facility Use:** Utility Plant and Visitor, Exhibition and Conference Center

**Size:** 78,800 SF

**Stories:** 2 | 1 above grade

## Architectural Summary

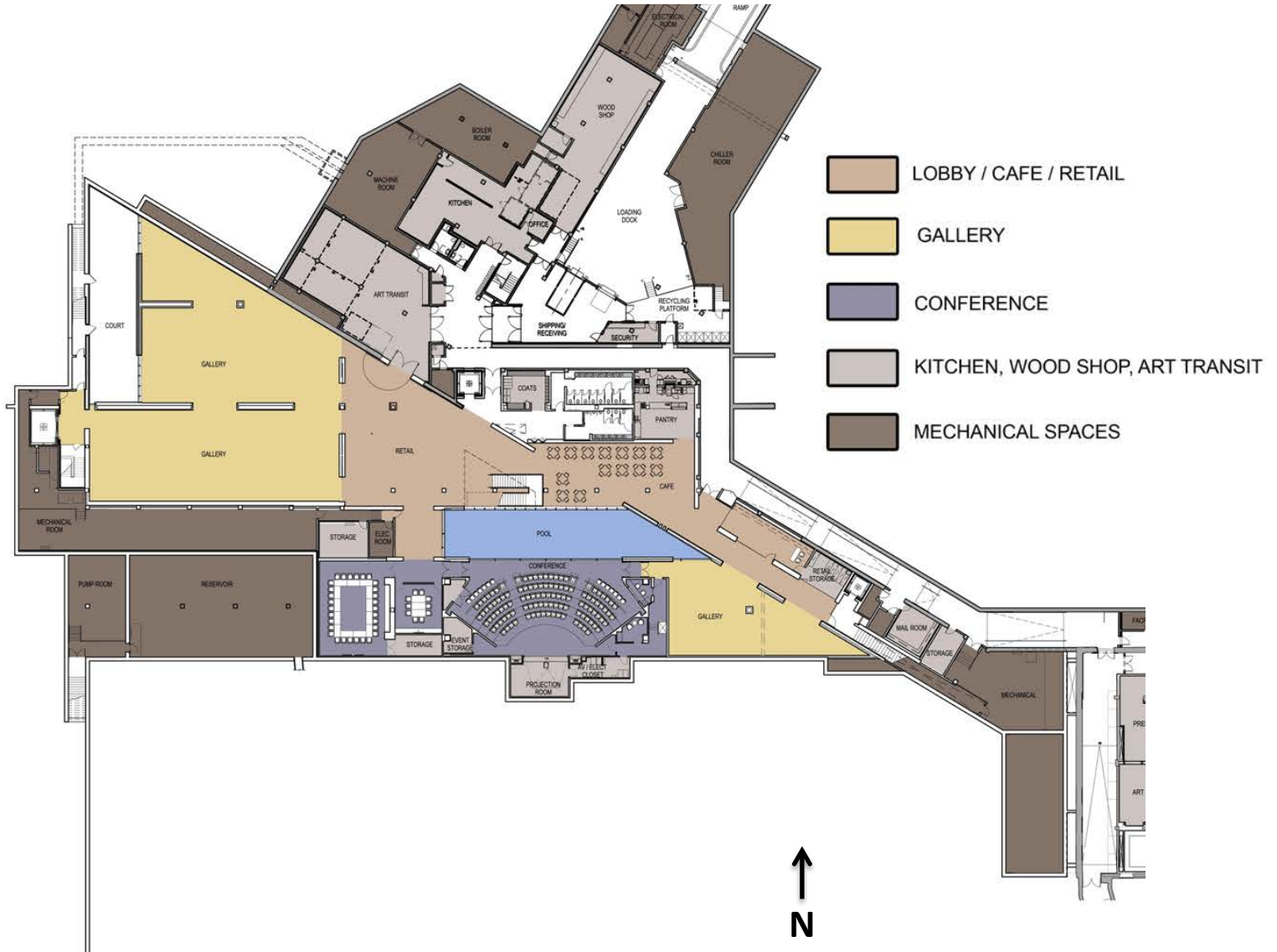
- Simple, clean lines with emphasis on vertical surfaces
- Open spaces inviting in the exterior environment
- Simple material palette

**Building**    Concept    Spaces



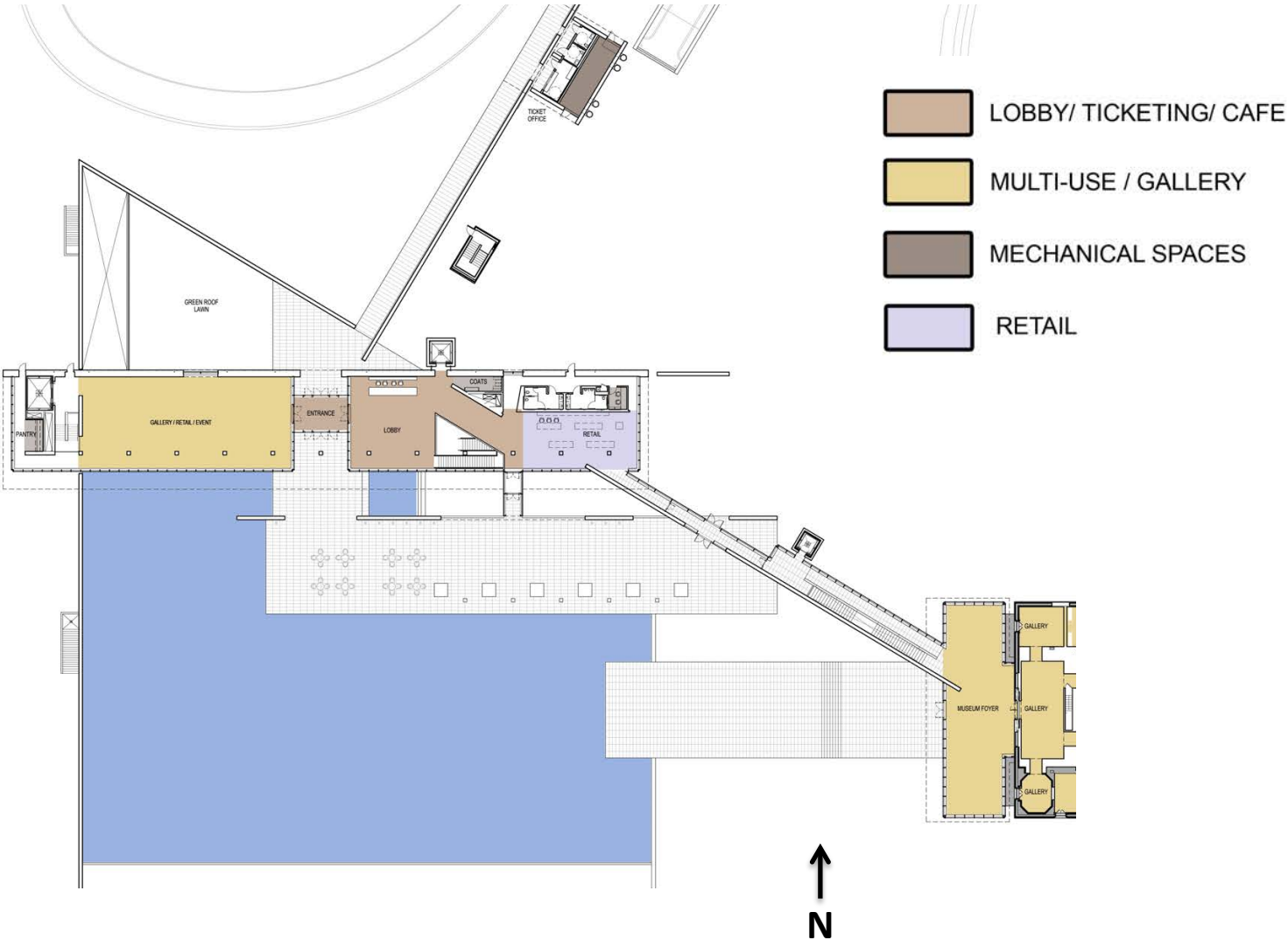
# THE CLARK

## Building Concept Spaces



# THE CLARK

## Building Concept Spaces



## Important project elements

1. The Architect
2. The Architecture
3. The Art

# THE CLARK

Building **Concept** Spaces

## The Architect: Tadao Ando

“Known for producing serene interior spaces that invite contemplation...”

- clarkart.edu

Q: Describe your style...

A: Walls are the most basic elements of architecture ... light is an important factor... create a place for the individual, a zone for oneself within society

- designboom.com



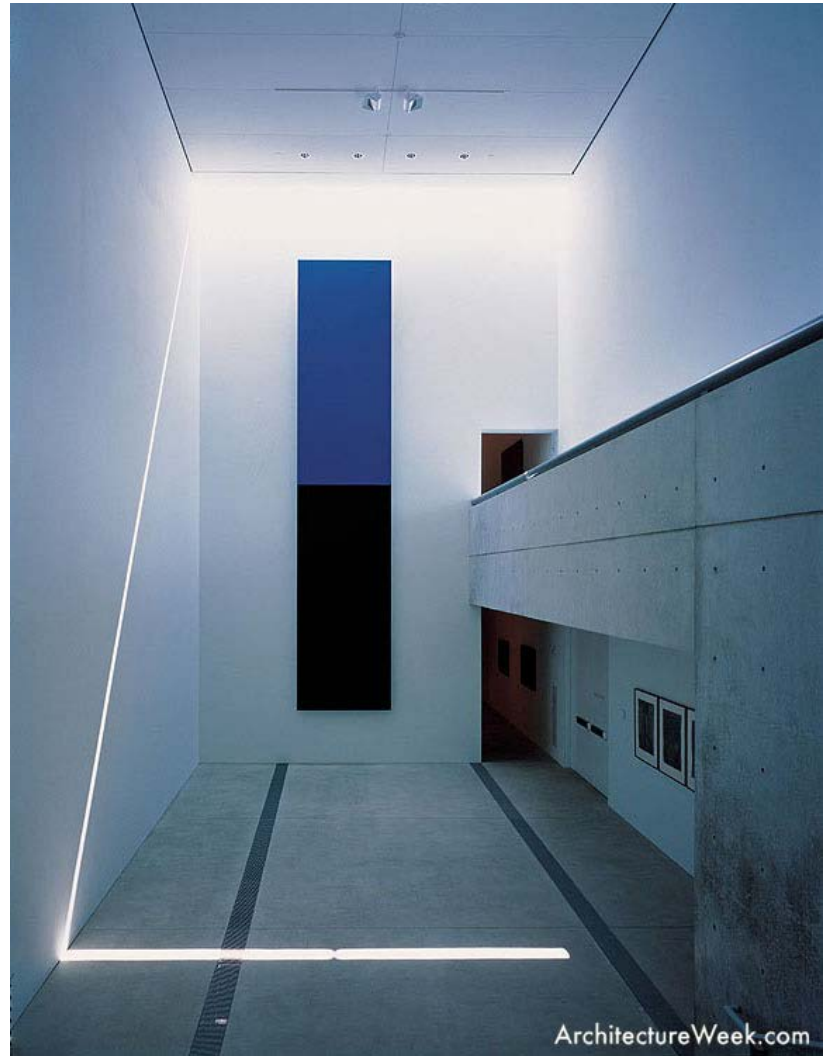
# THE CLARK

Building **Concept** Spaces

## The Architecture

- Materiality
- Tactility
- Emptiness

Complex, three dimensional  
circulatory patterns





# THE CLARK

## The Art: Impressionism

- Play of light and color
- Capture light and atmosphere at the cost of details



Claude Monet, The Cliff at Étretat after the Storm, 1885

## Resolutions

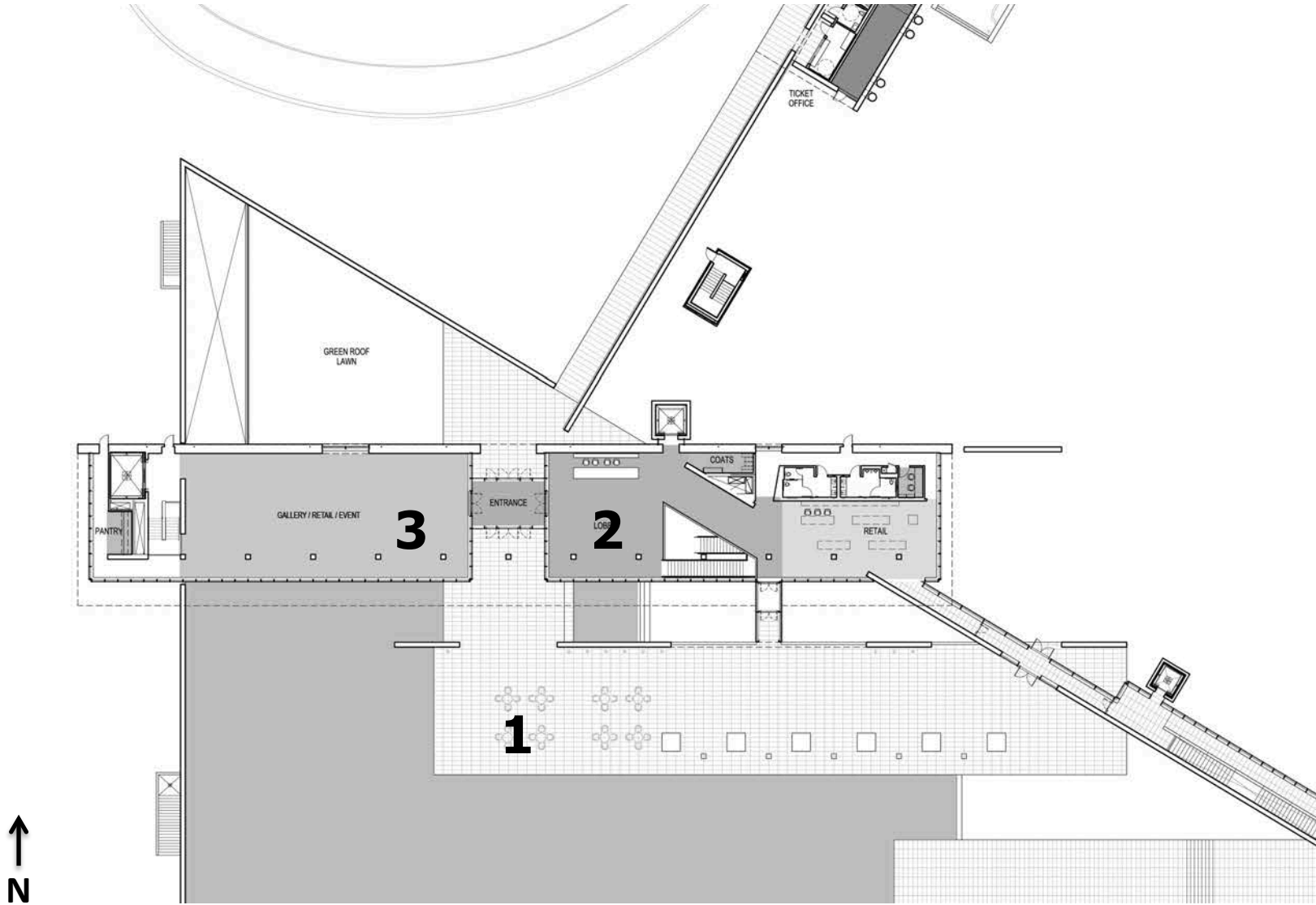
- Enhance the “materiality, tactility, and emptiness of the walls”
- Respect the natural light in the space
- Use light to guide occupants through Ando’s circulatory paths

## Resolutions

- Enhance the “materiality, tactility, and emptiness of the walls”
- Respect the natural light in the space
- Use light to guide occupants through Ando’s circulatory paths

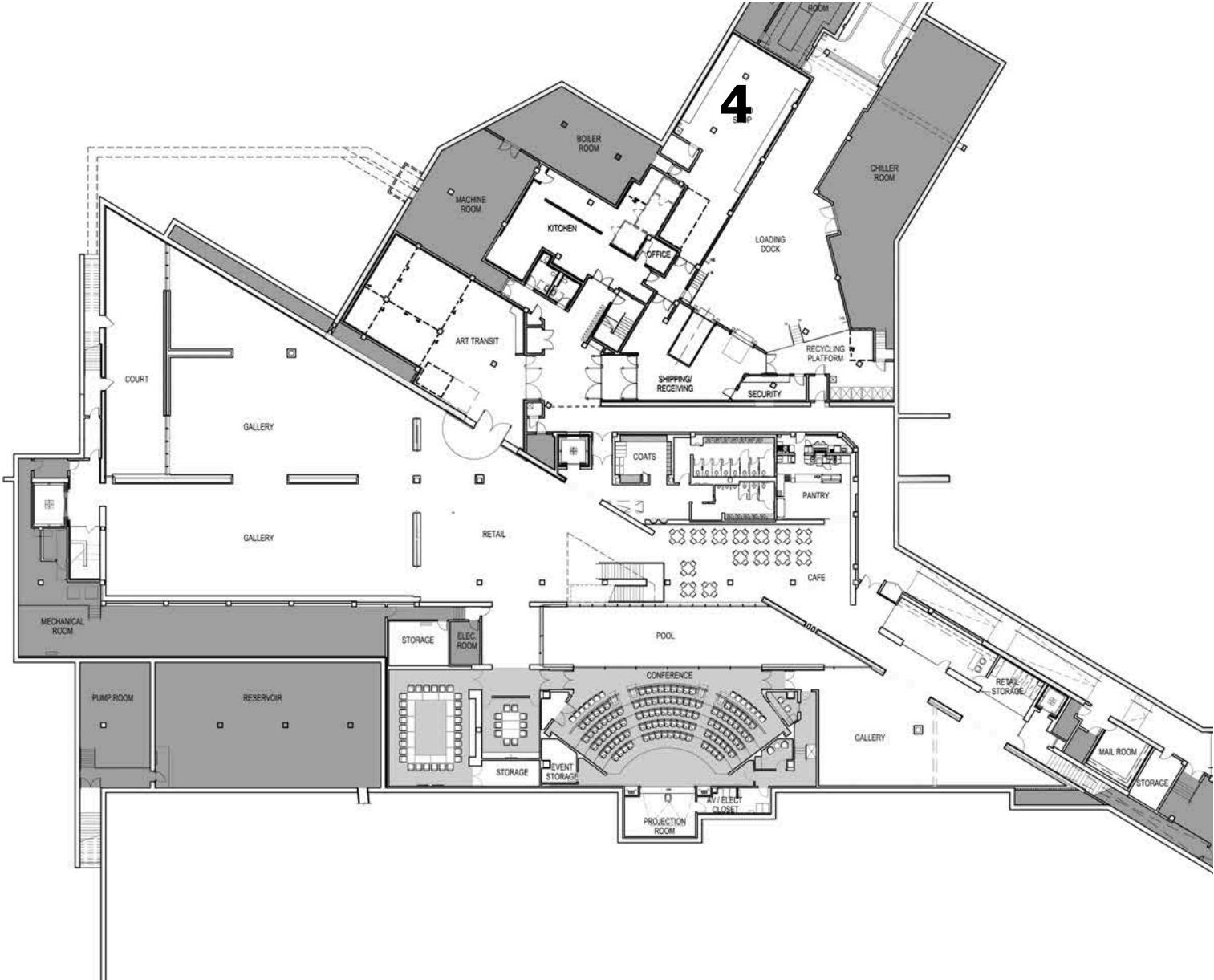
# THE CLARK

## Building Concept Spaces



# THE CLARK

## Building Concept Spaces



# THE CLARK

Building Concept Spaces

## Criteria

- Support the seasonal atmosphere of the space
- Enhance the “Materiality, Tactility and Emptiness”
- Limit light trespass
- Limit sky glow
- Control glare
- $E_h$  of 4 lux (for LZ2)



**Terrace**

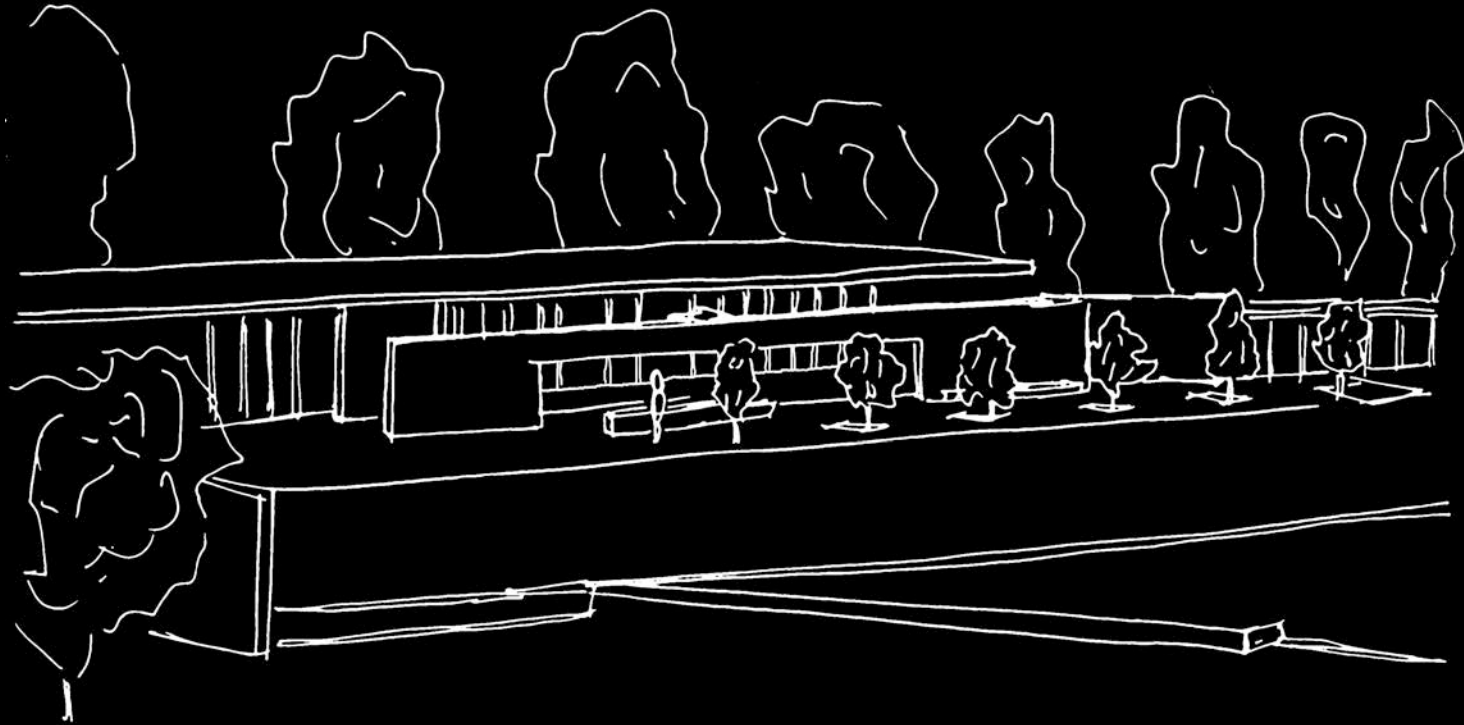
Lobby

Multi-Use

Shop

# THE CLARK

Building Concept **Spaces**



**Terrace**

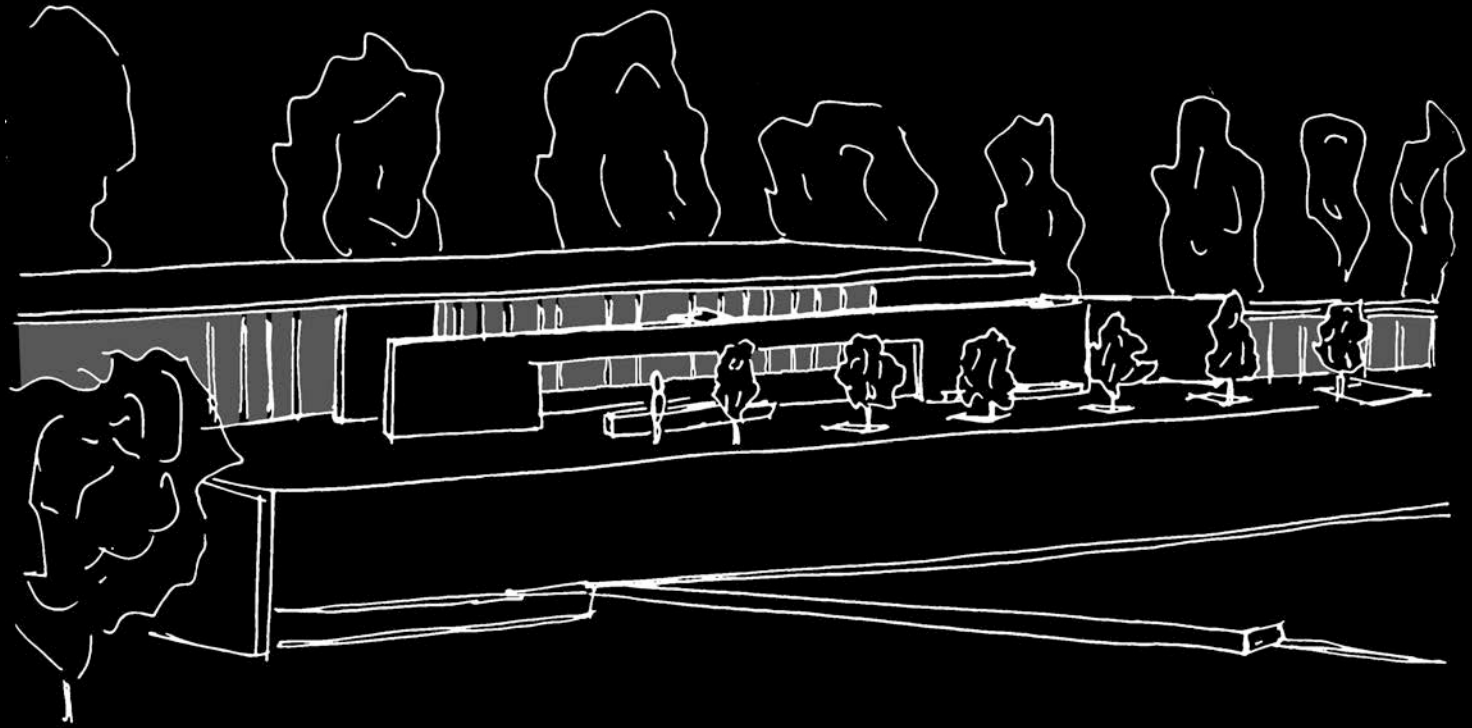
Lobby

Multi-Use

Shop

# THE CLARK

Building Concept Spaces



**Terrace**

Lobby

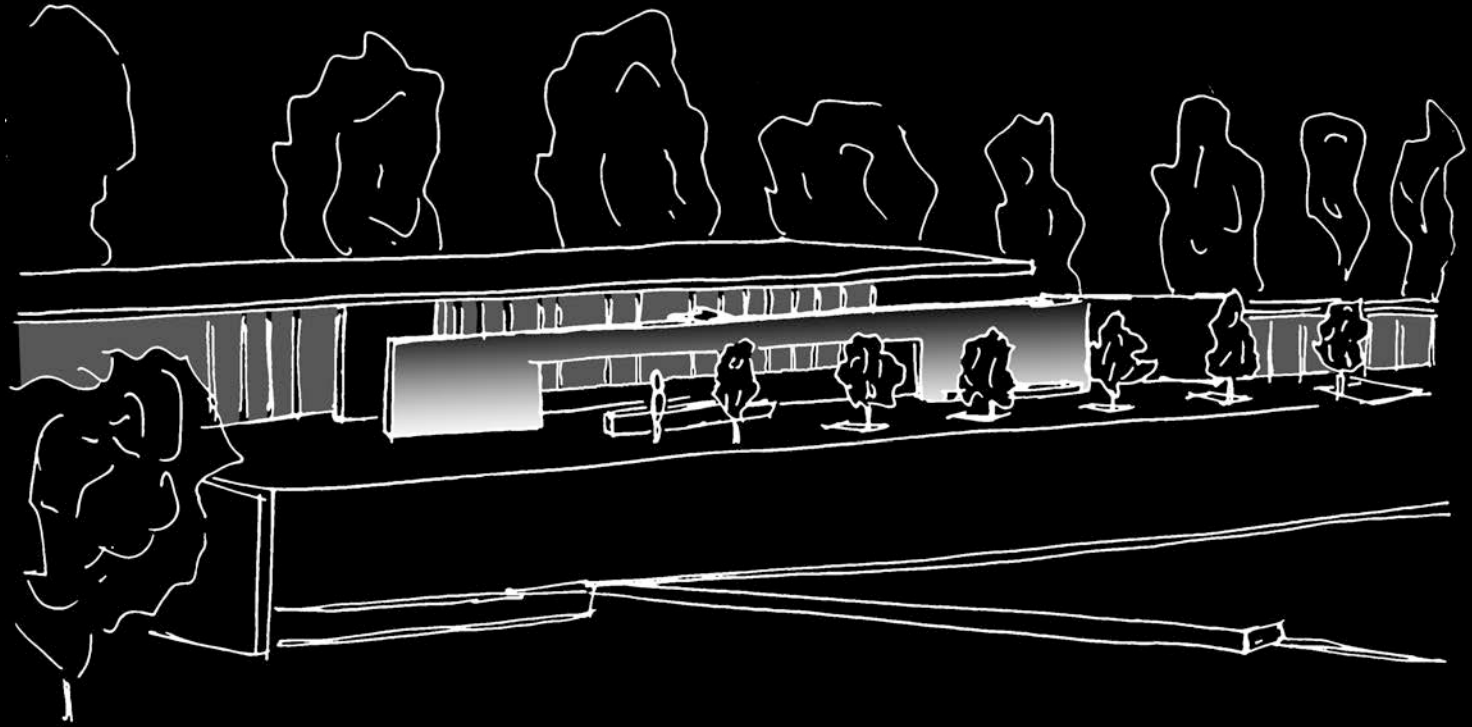
Multi-Use

Shop



# THE CLARK

Building Concept **Spaces**



**Terrace**

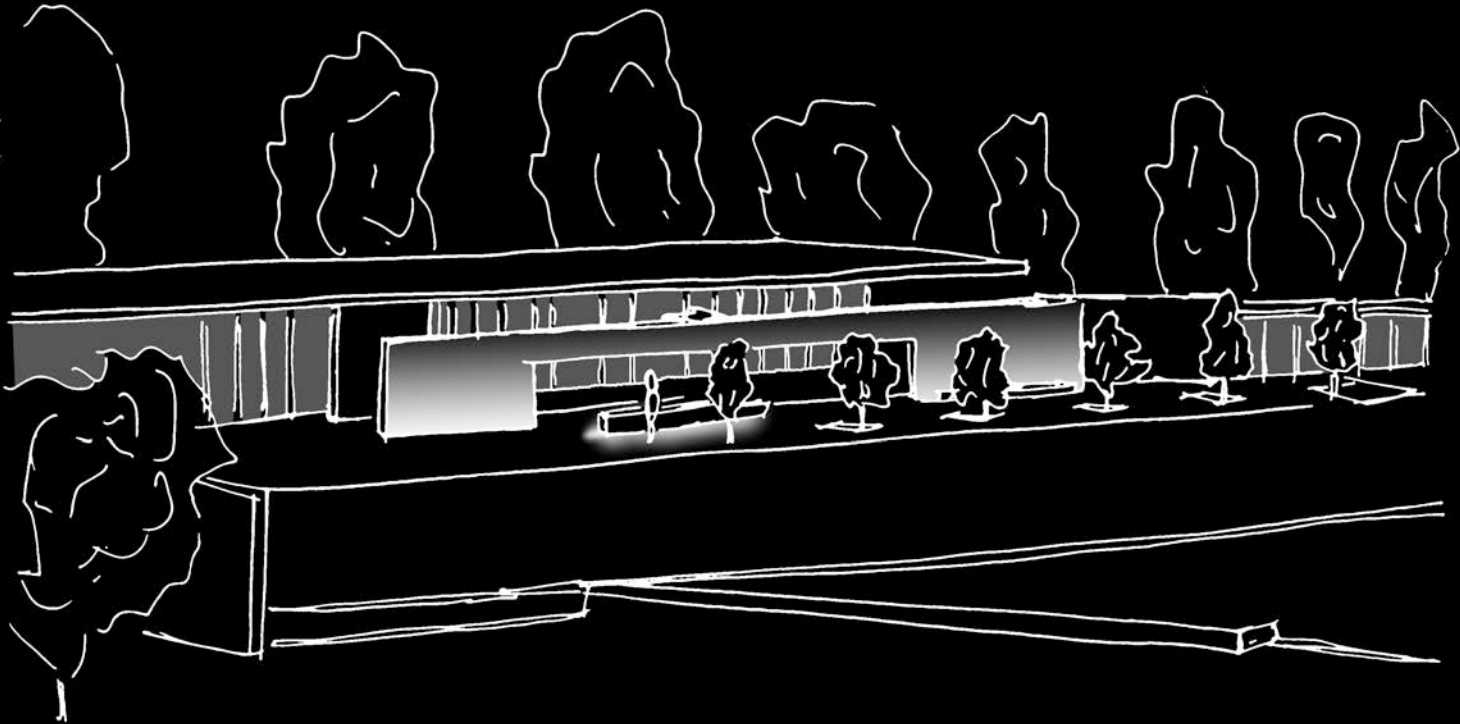
Lobby

Multi-Use

Shop

# THE CLARK

Building Concept Spaces



**Terrace**

Lobby

Multi-Use

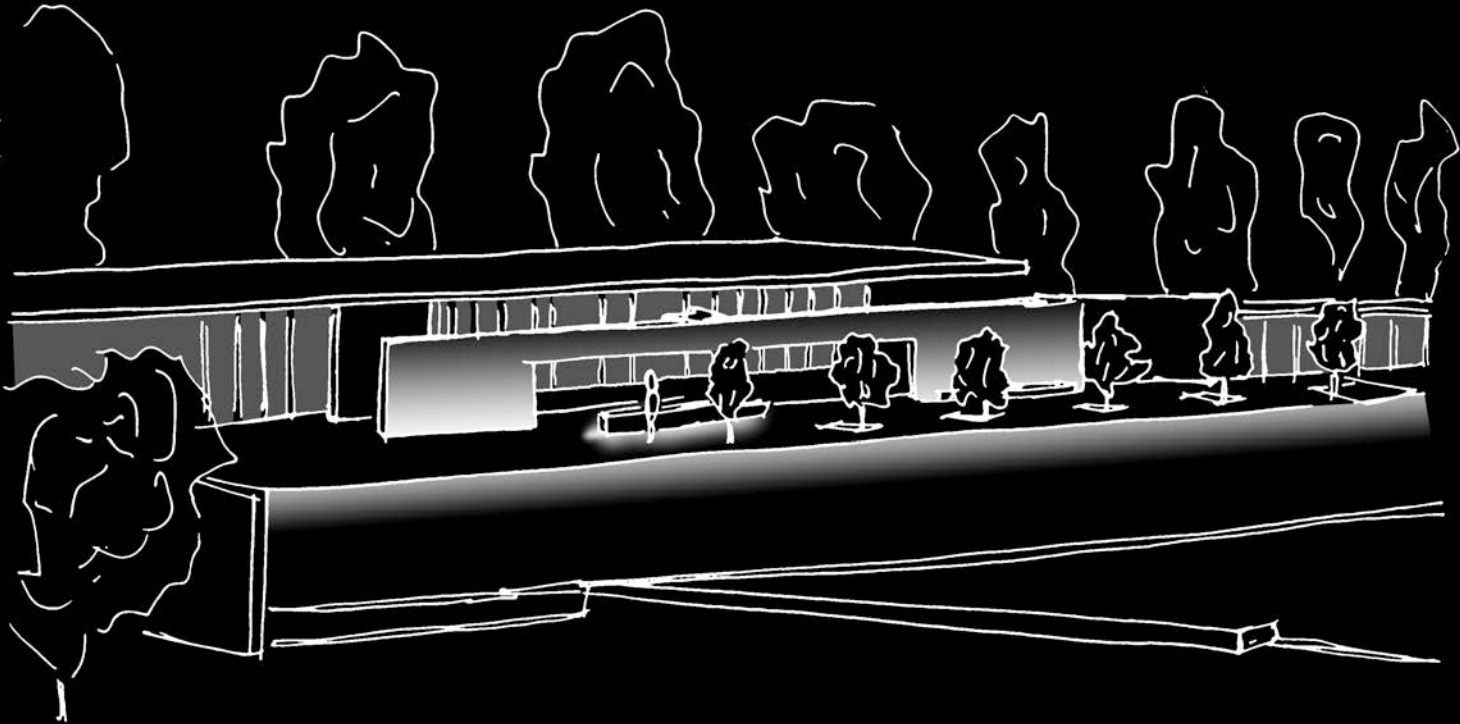
Shop

# THE CLARK

Building

Concept

**Spaces**



**Terrace**

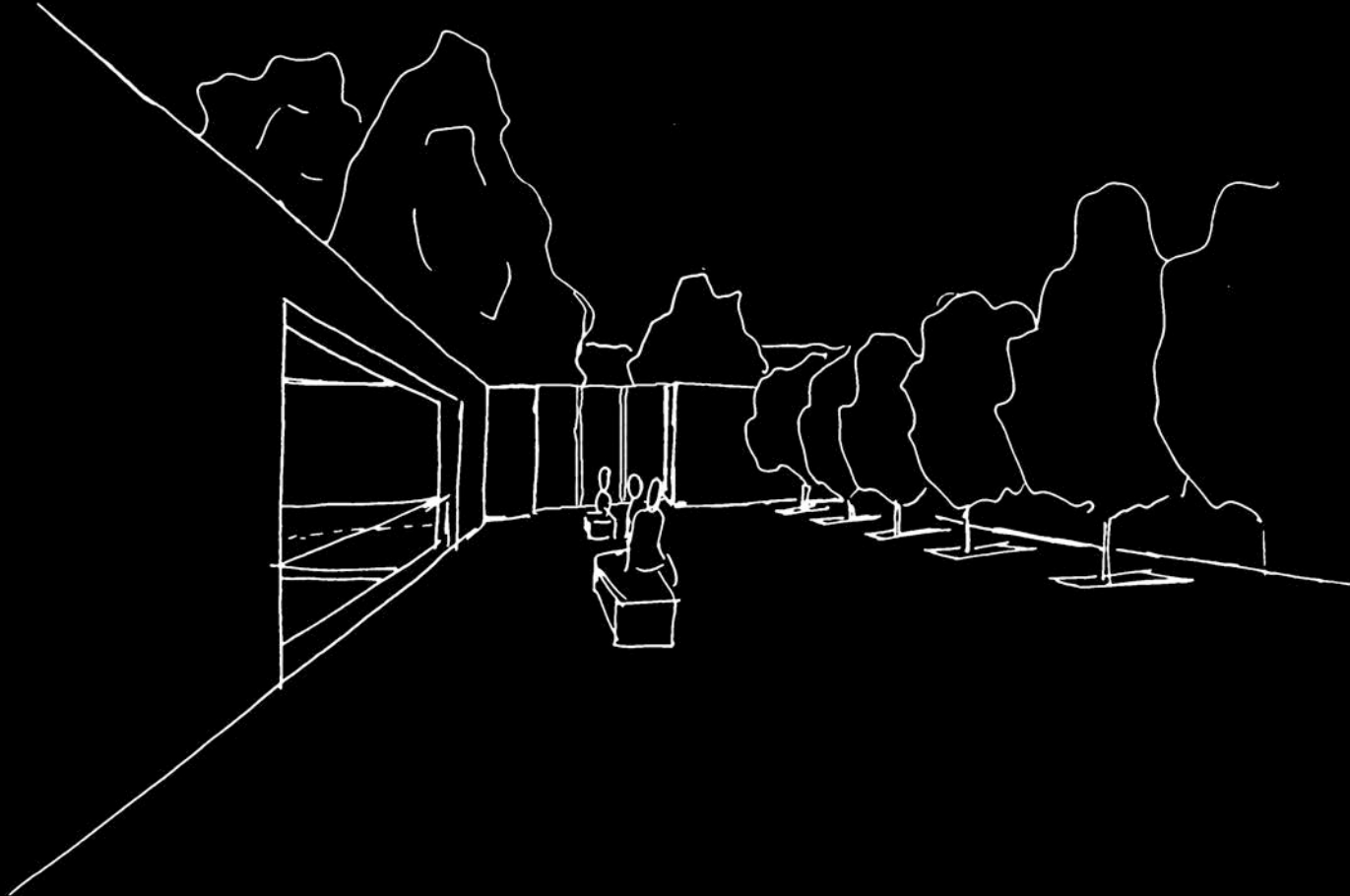
Lobby

Multi-Use

Shop

# THE CLARK

Building Concept **Spaces**



**Terrace**

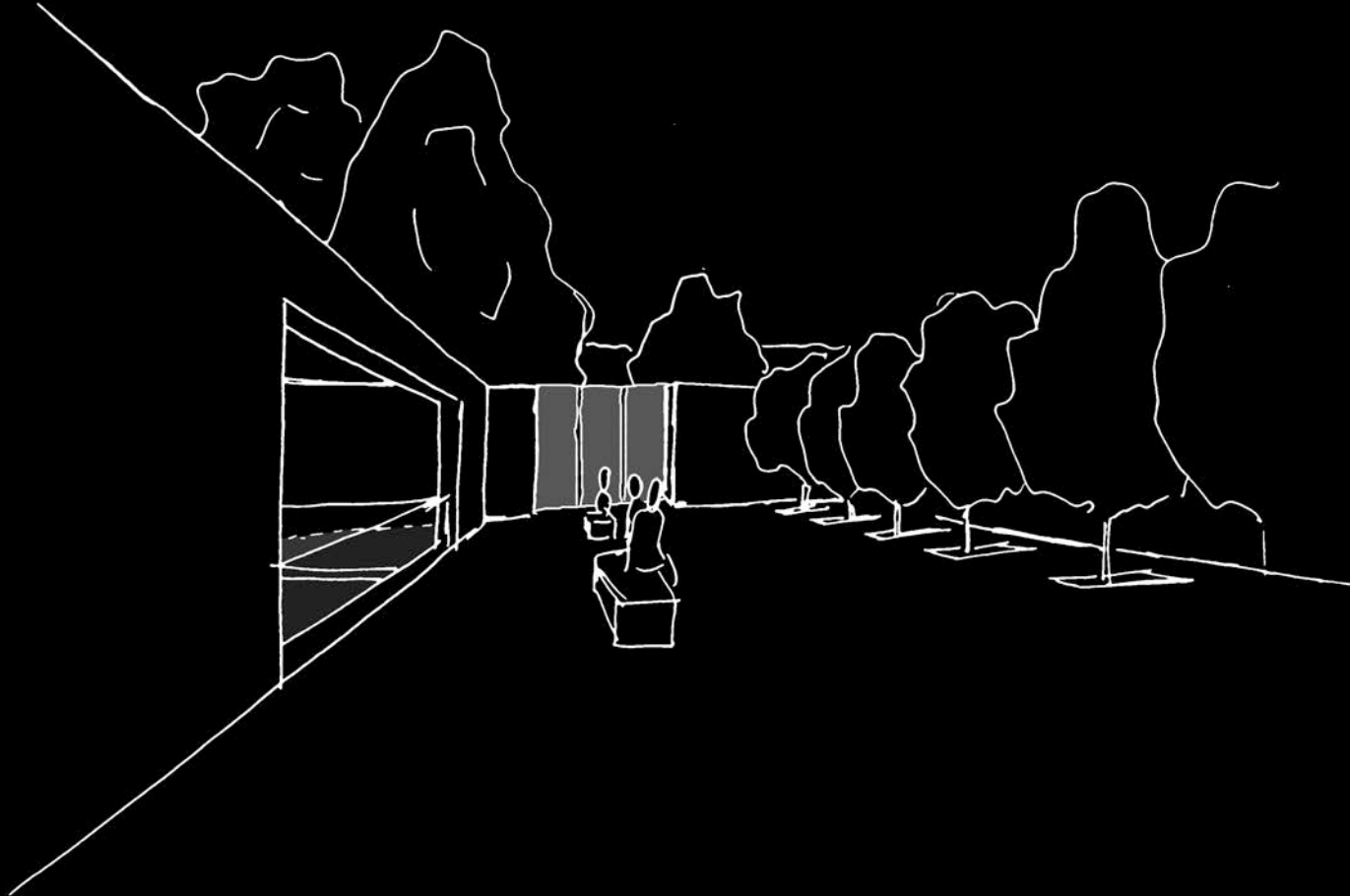
Lobby

Multi-Use

Shop

# THE CLARK

Building Concept Spaces



**Terrace**

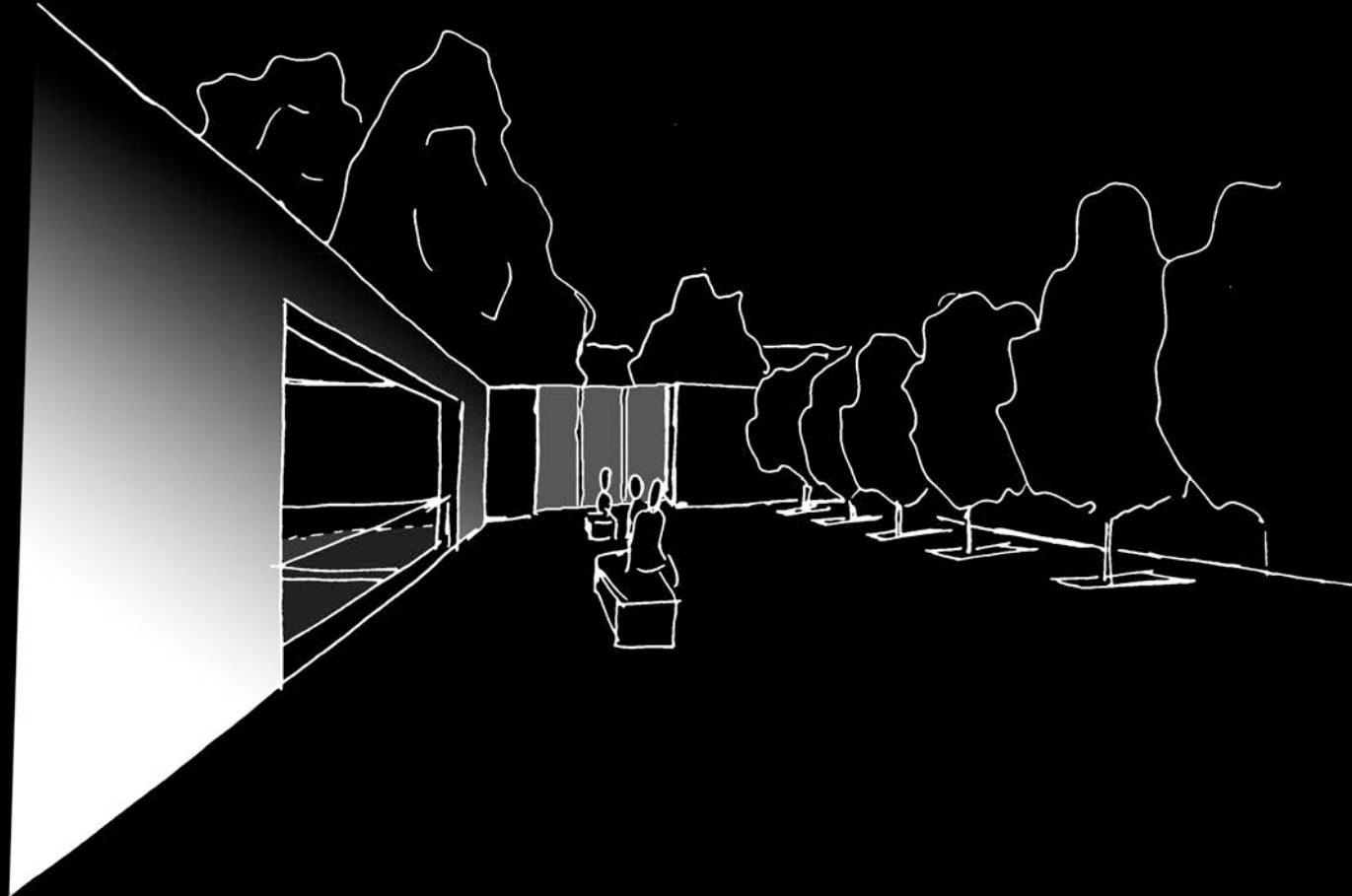
Lobby

Multi-Use

Shop

# THE CLARK

Building Concept **Spaces**



**Terrace**

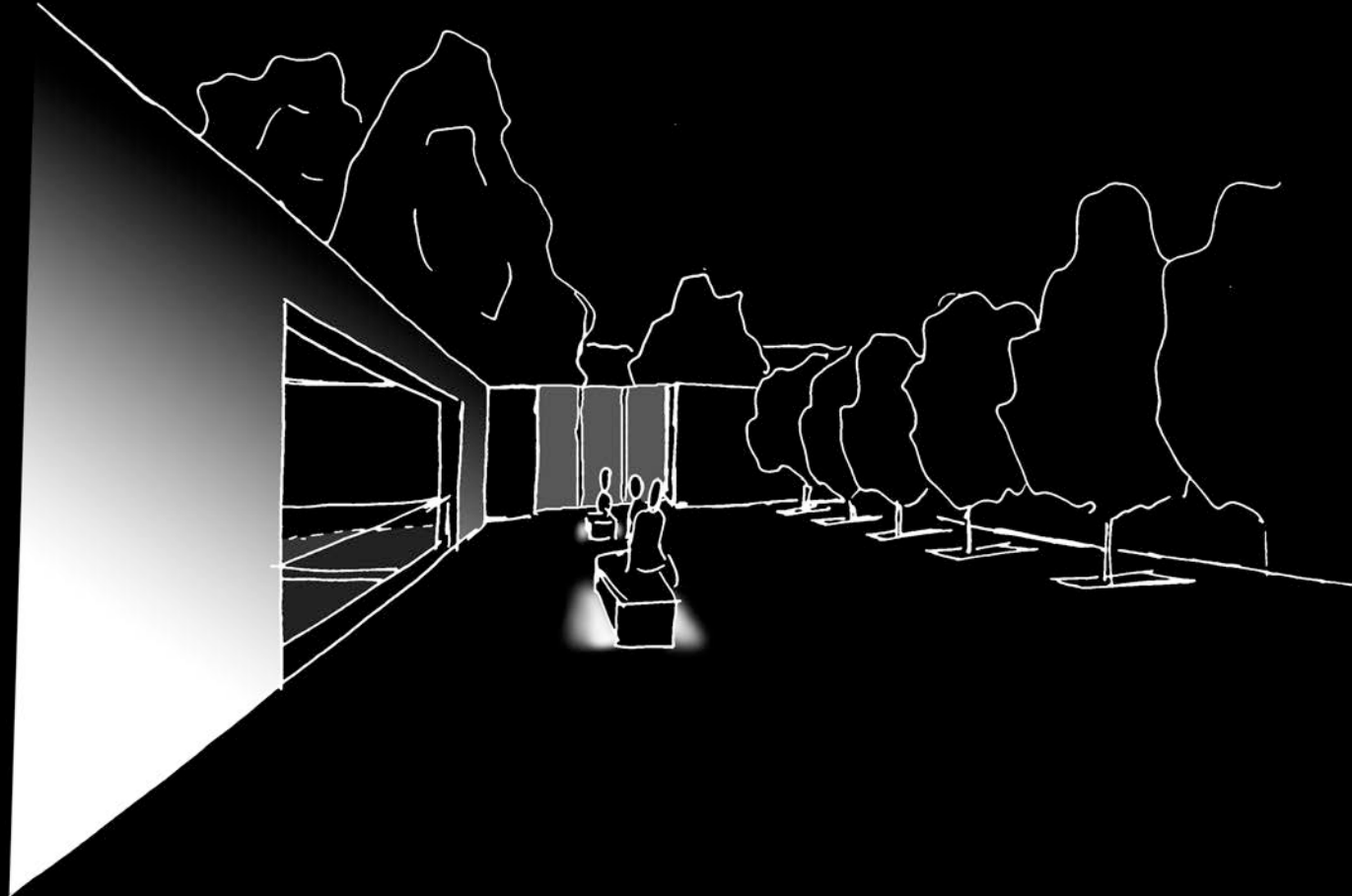
Lobby

Multi-Use

Shop

# THE CLARK

Building Concept **Spaces**



**Terrace**

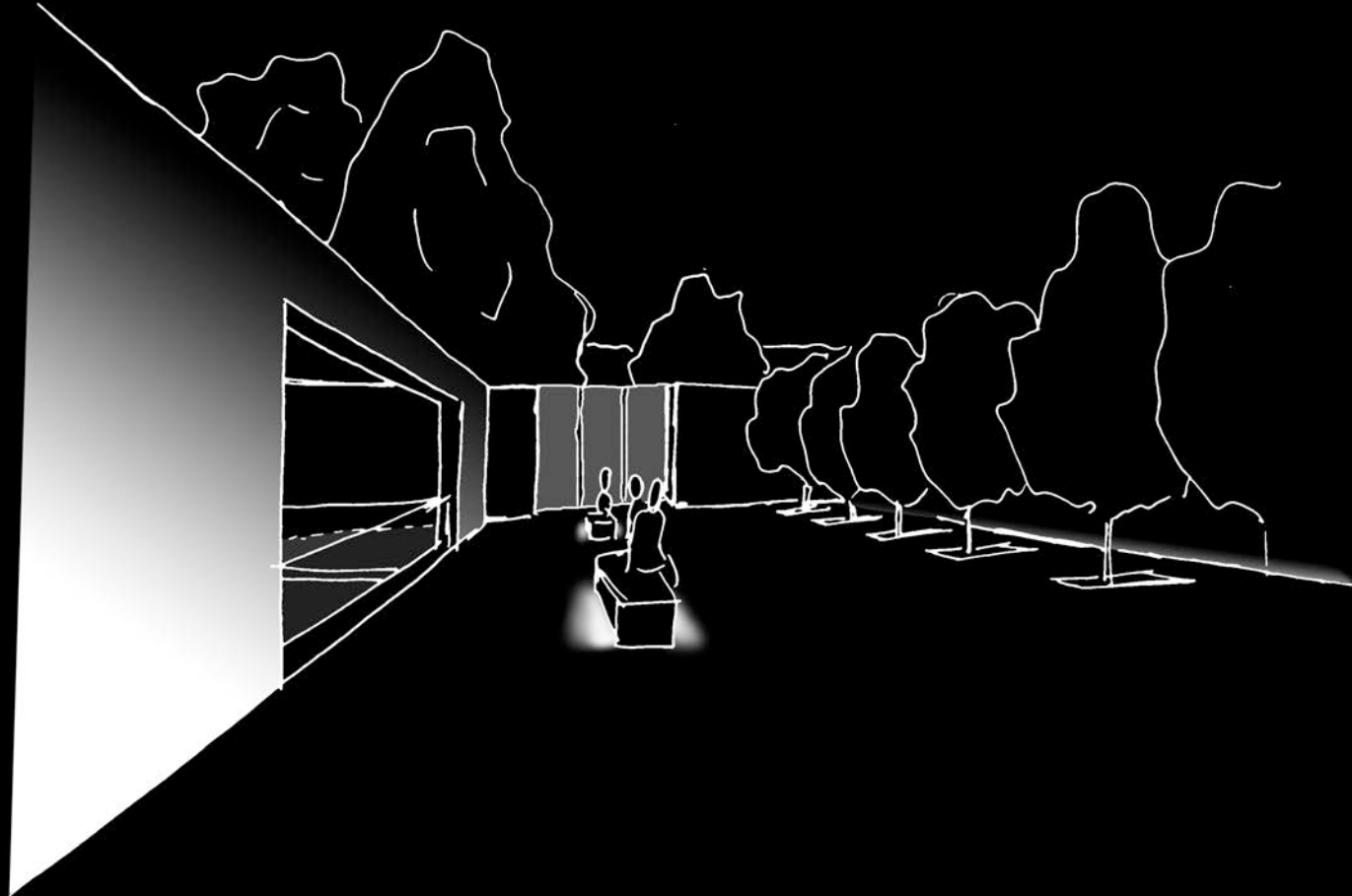
Lobby

Multi-Use

Shop

# THE CLARK

Building Concept **Spaces**



**Terrace**

Lobby

Multi-Use

Shop

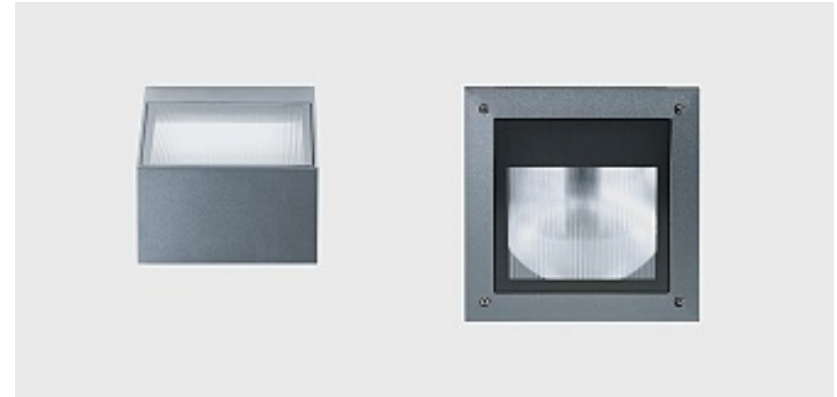


# THE CLARK

Building Concept **Spaces**

## Equipment

- In-grade wall washers
- In-grade tree accent
- Recessed footlights
- Underwater rated LED fixtures



**Terrace**

Lobby

Multi-Use

Shop

# THE CLARK

Building Concept Spaces

## Criteria

- Create an impression of a public space
- Enhance the “Materiality, Tactility and Emptiness”
- Highlight architectural materials
- Guide occupants through Ando’s circulatory paths
- Limit light trespass
- Control glare



Terrace

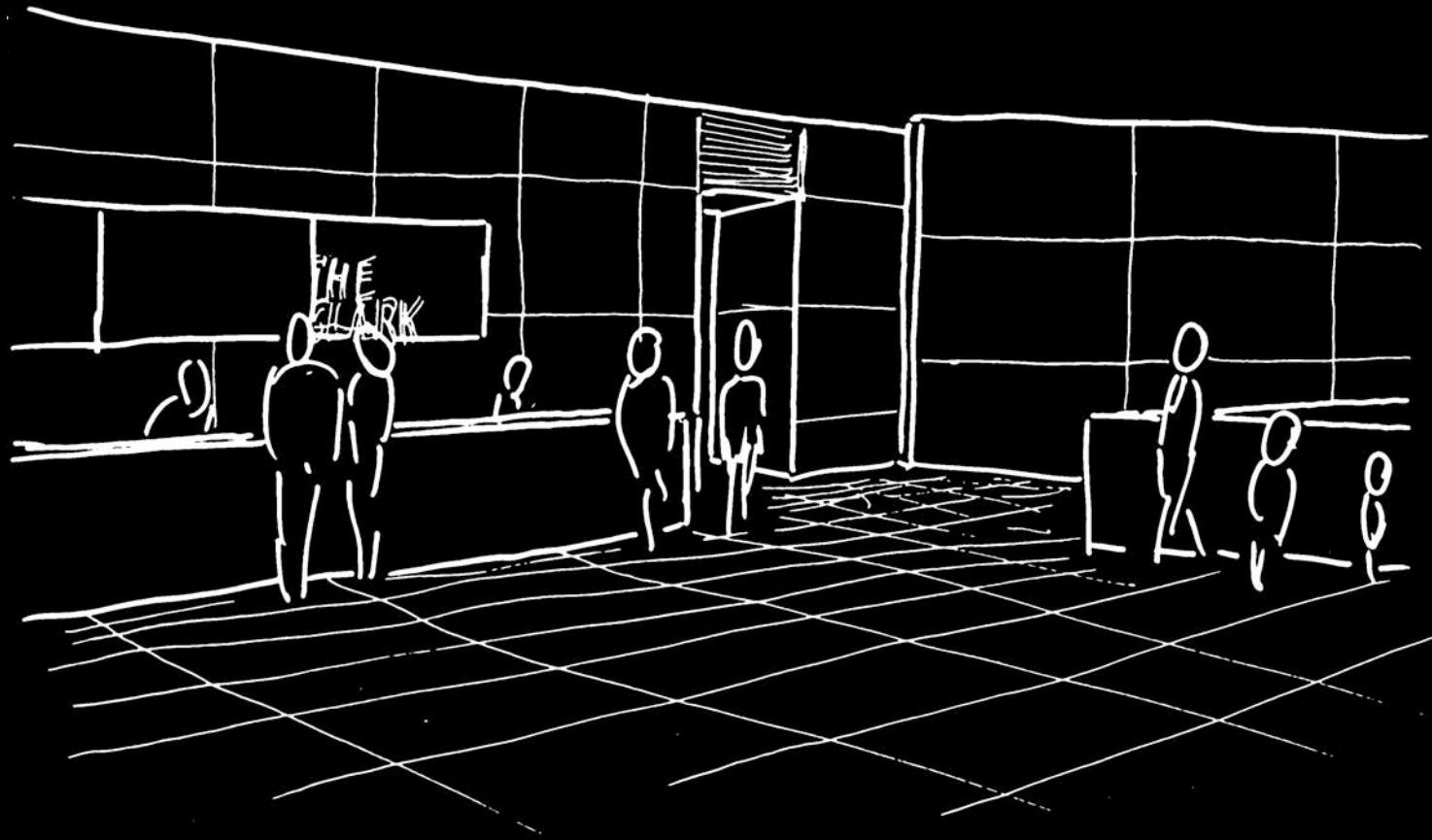
**Lobby**

Multi-Use

Shop

# THE CLARK

Building Concept Spaces



Terrace

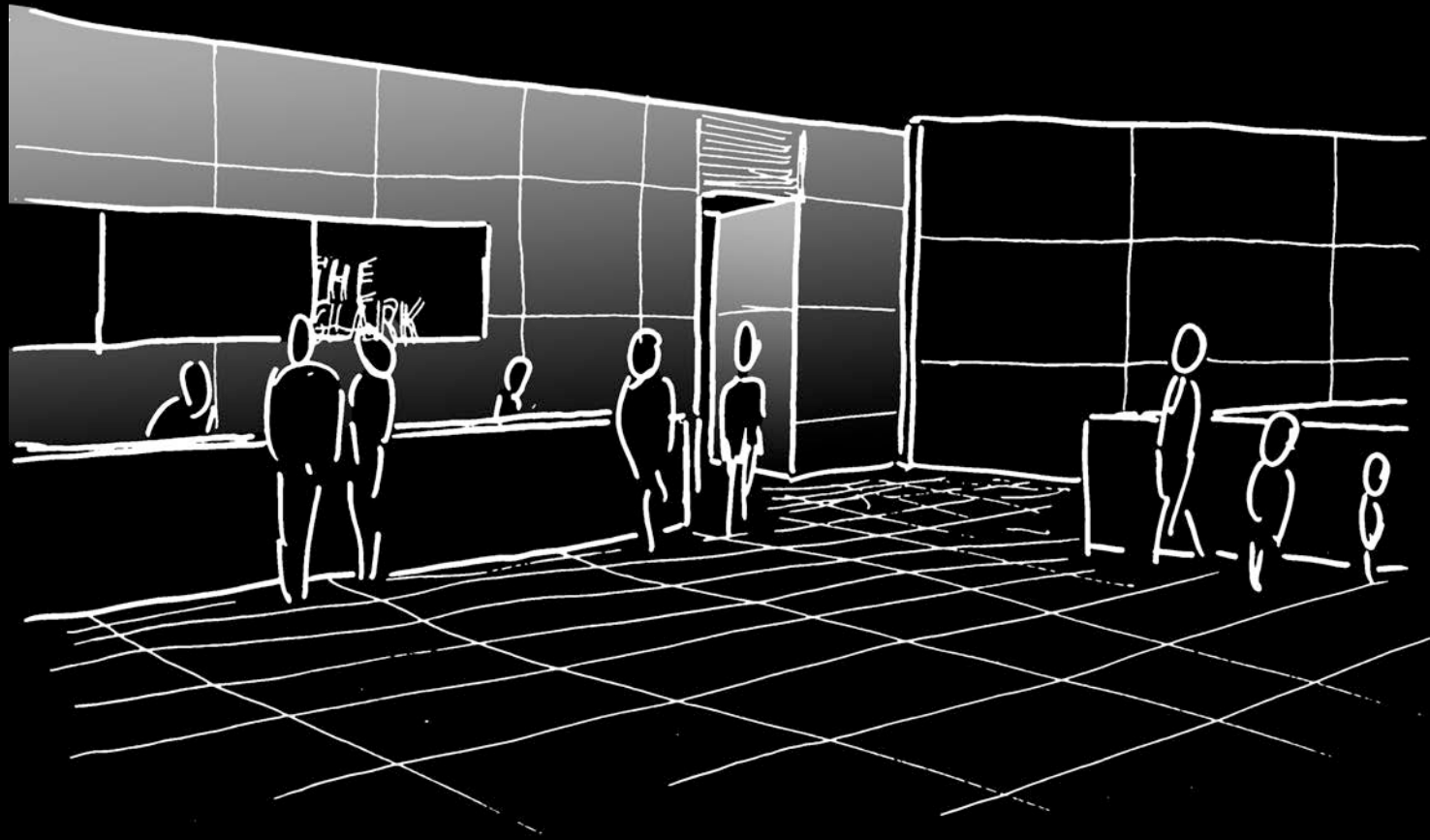
**Lobby**

Multi-Use

Shop

# THE CLARK

Building Concept **Spaces**



Terrace

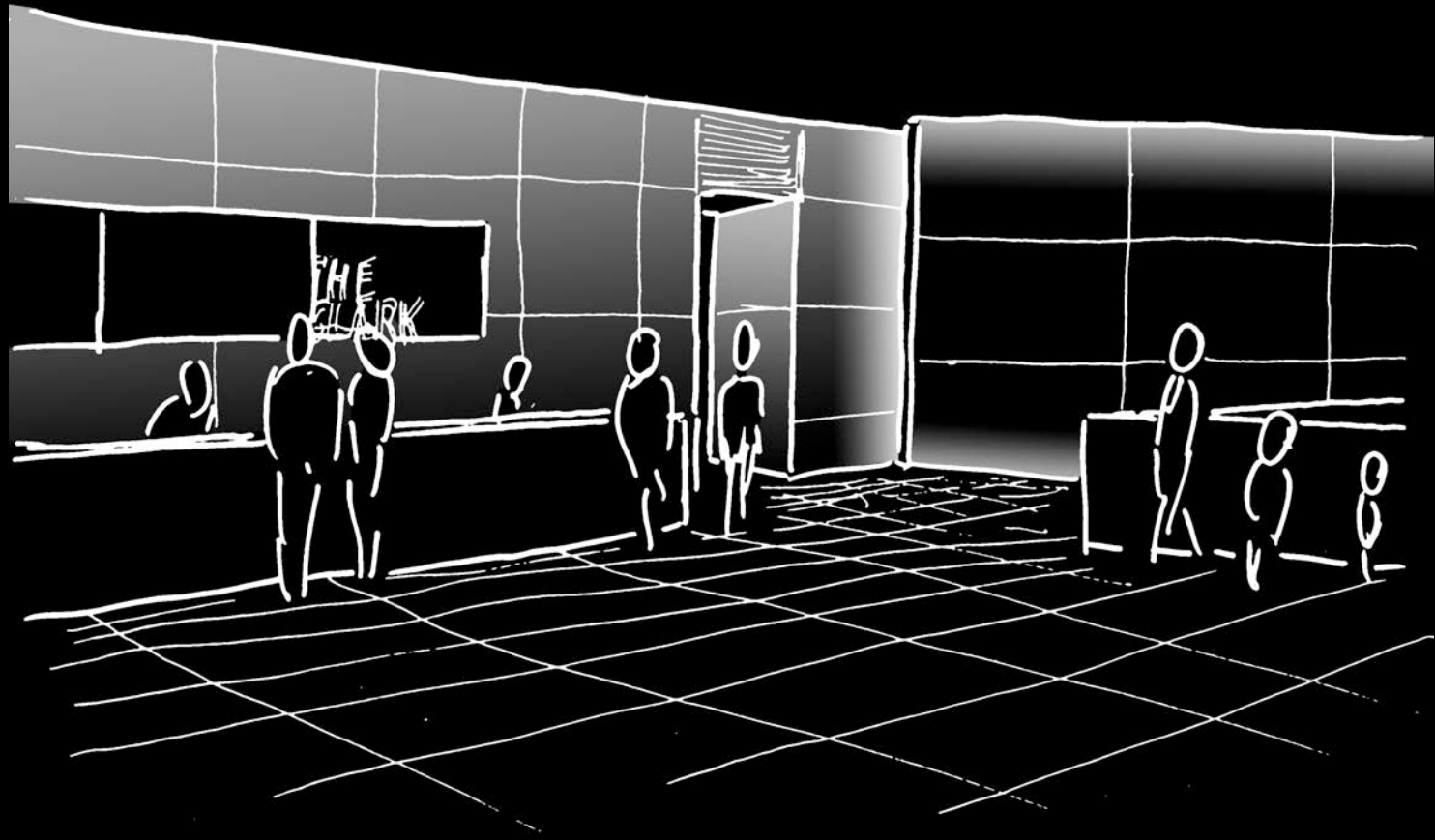
**Lobby**

Multi-Use

Shop

# THE CLARK

Building Concept **Spaces**



Terrace

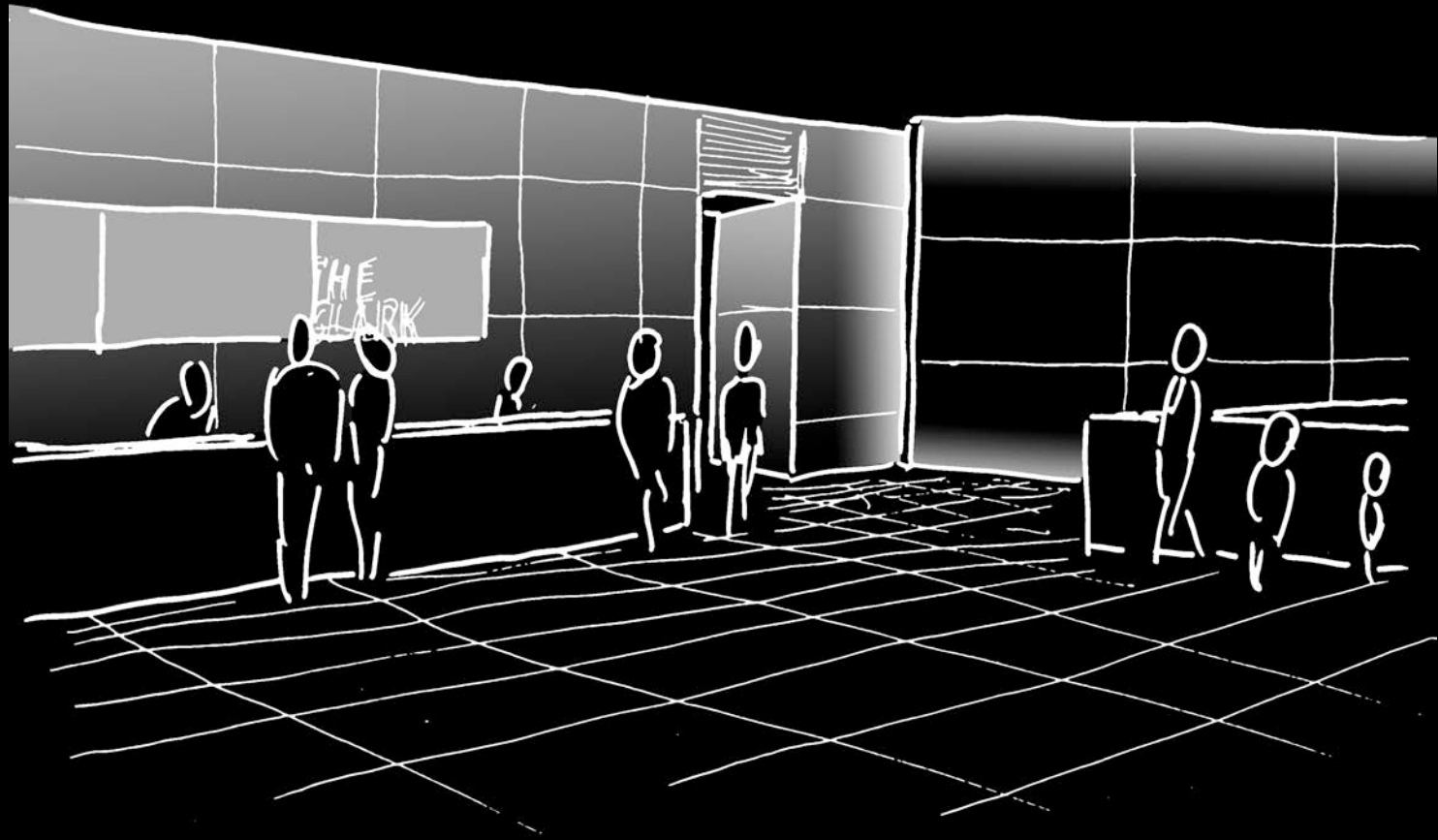
**Lobby**

Multi-Use

Shop

# THE CLARK

Building Concept **Spaces**



Terrace

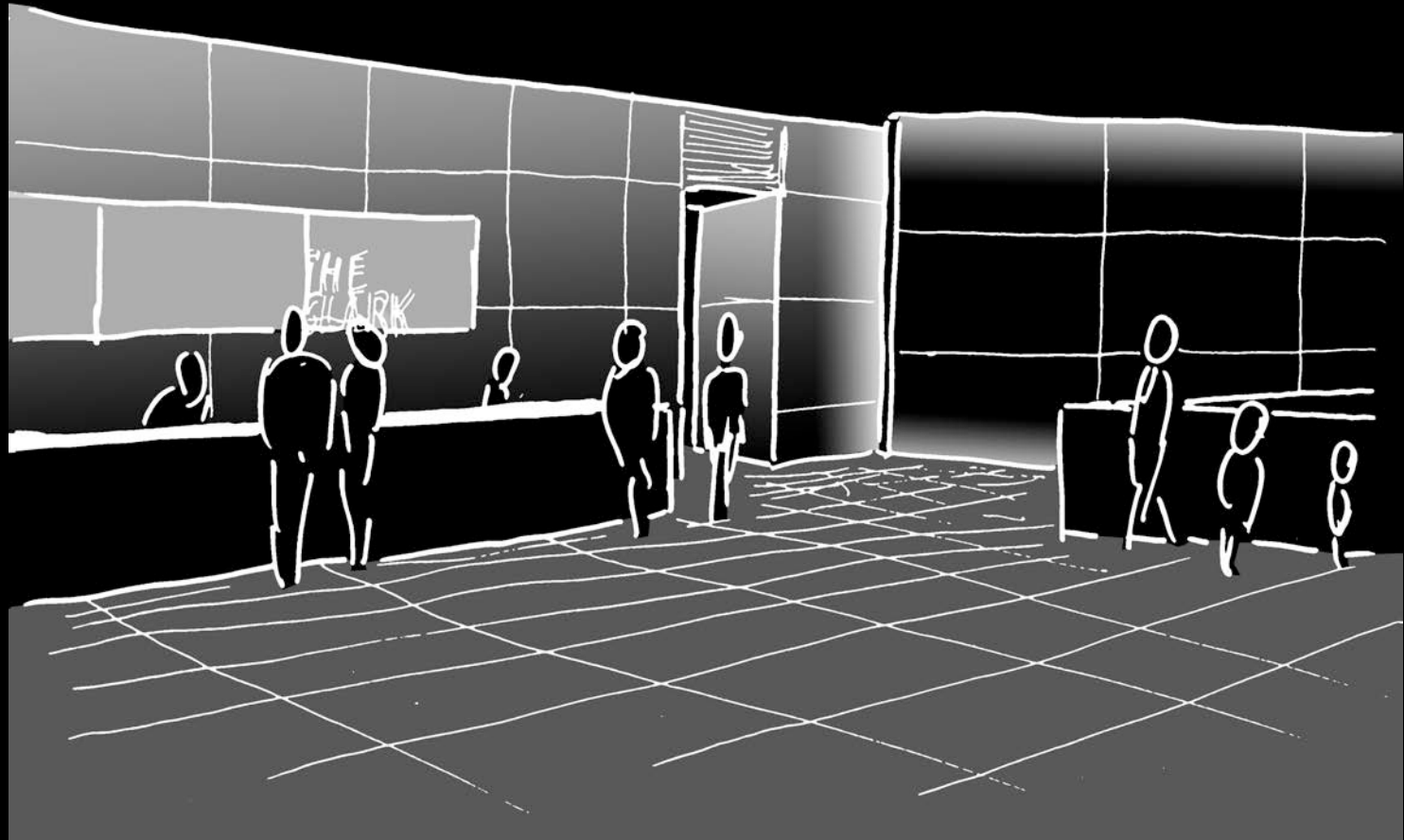
**Lobby**

Multi-Use

Shop

# THE CLARK

Building Concept **Spaces**



Terrace

**Lobby**

Multi-Use

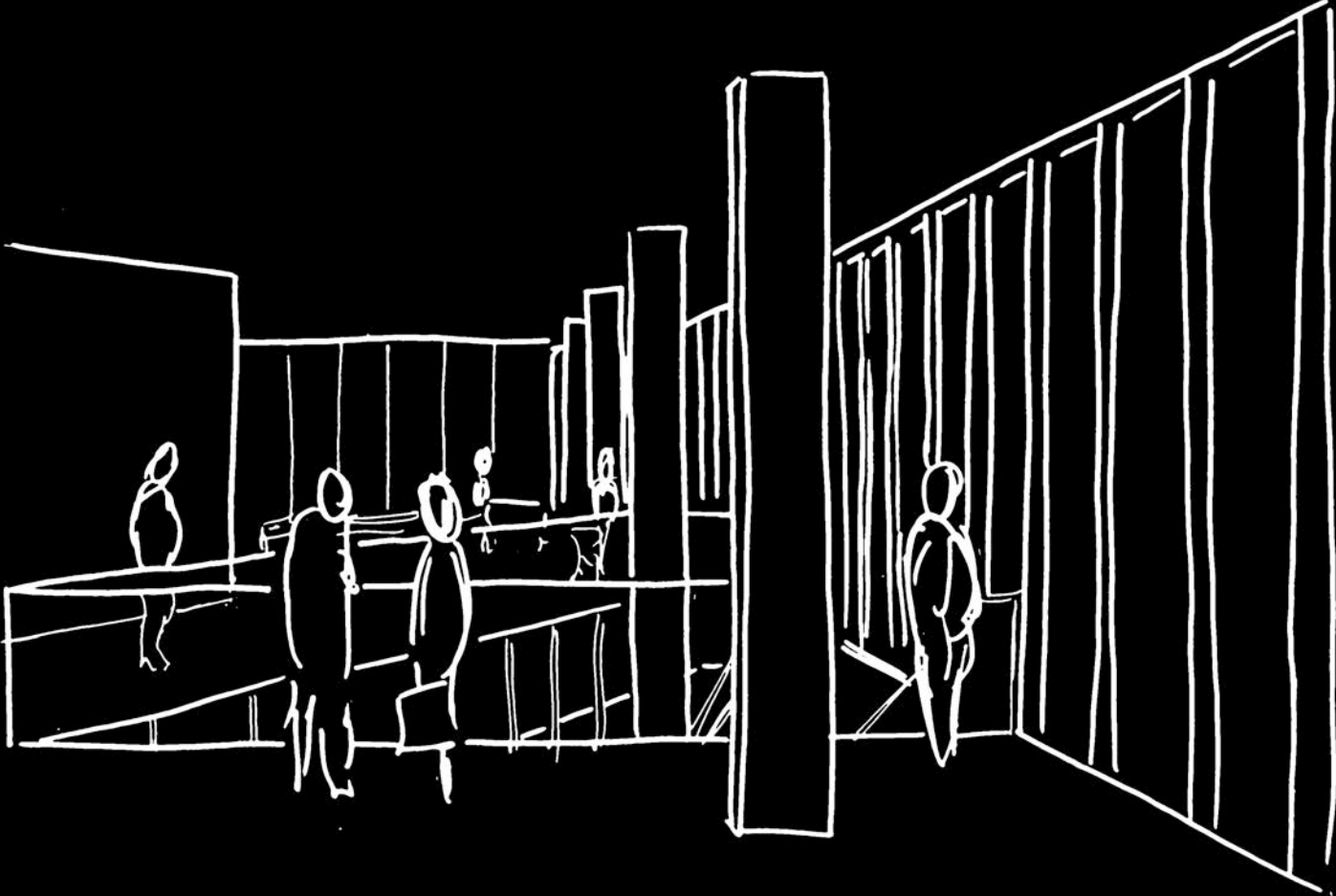
Shop

# THE CLARK

Building

Concept

**Spaces**



Terrace

**Lobby**

Multi-Use

Shop

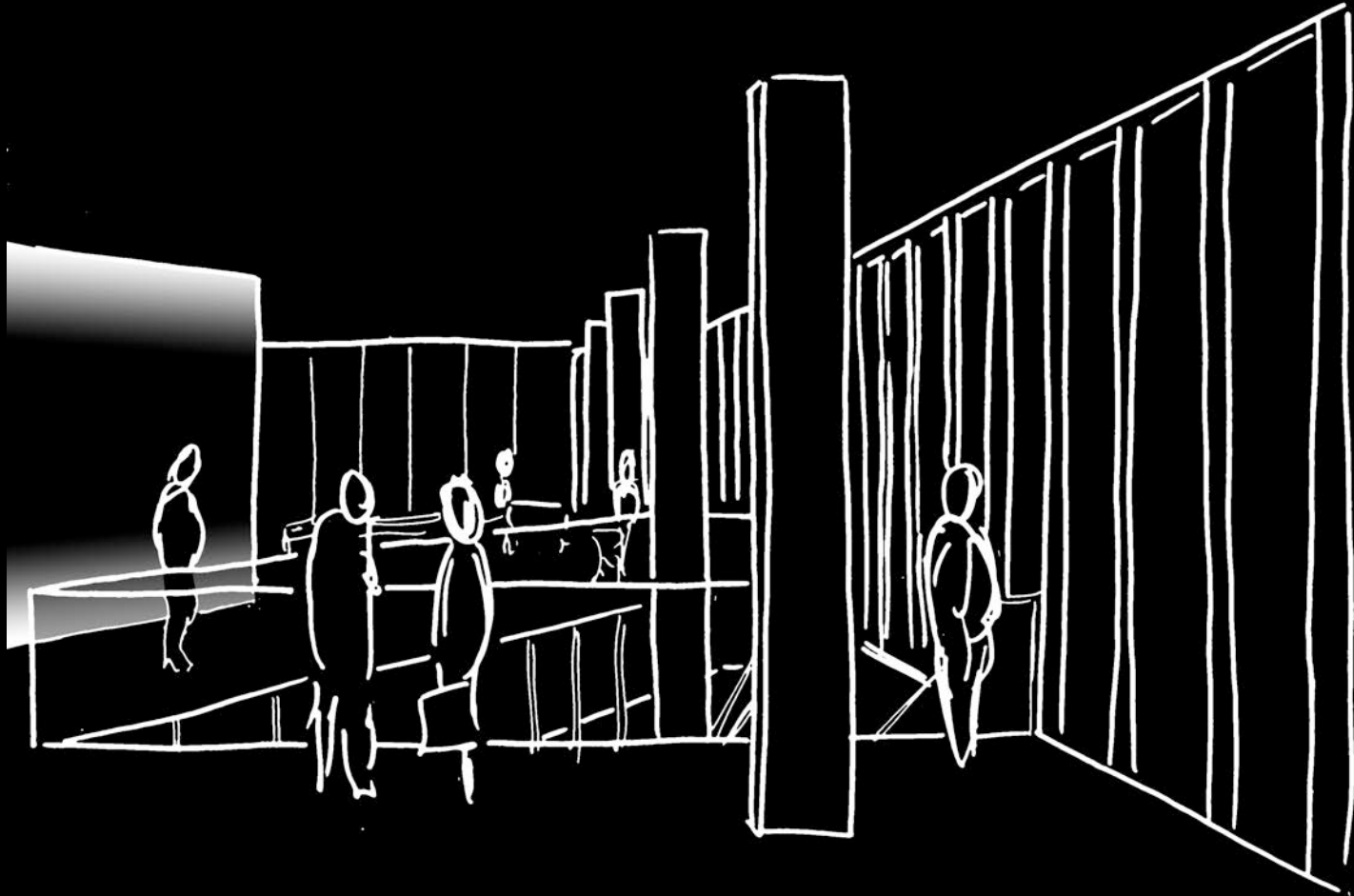


# THE CLARK

Building

Concept

**Spaces**



Terrace

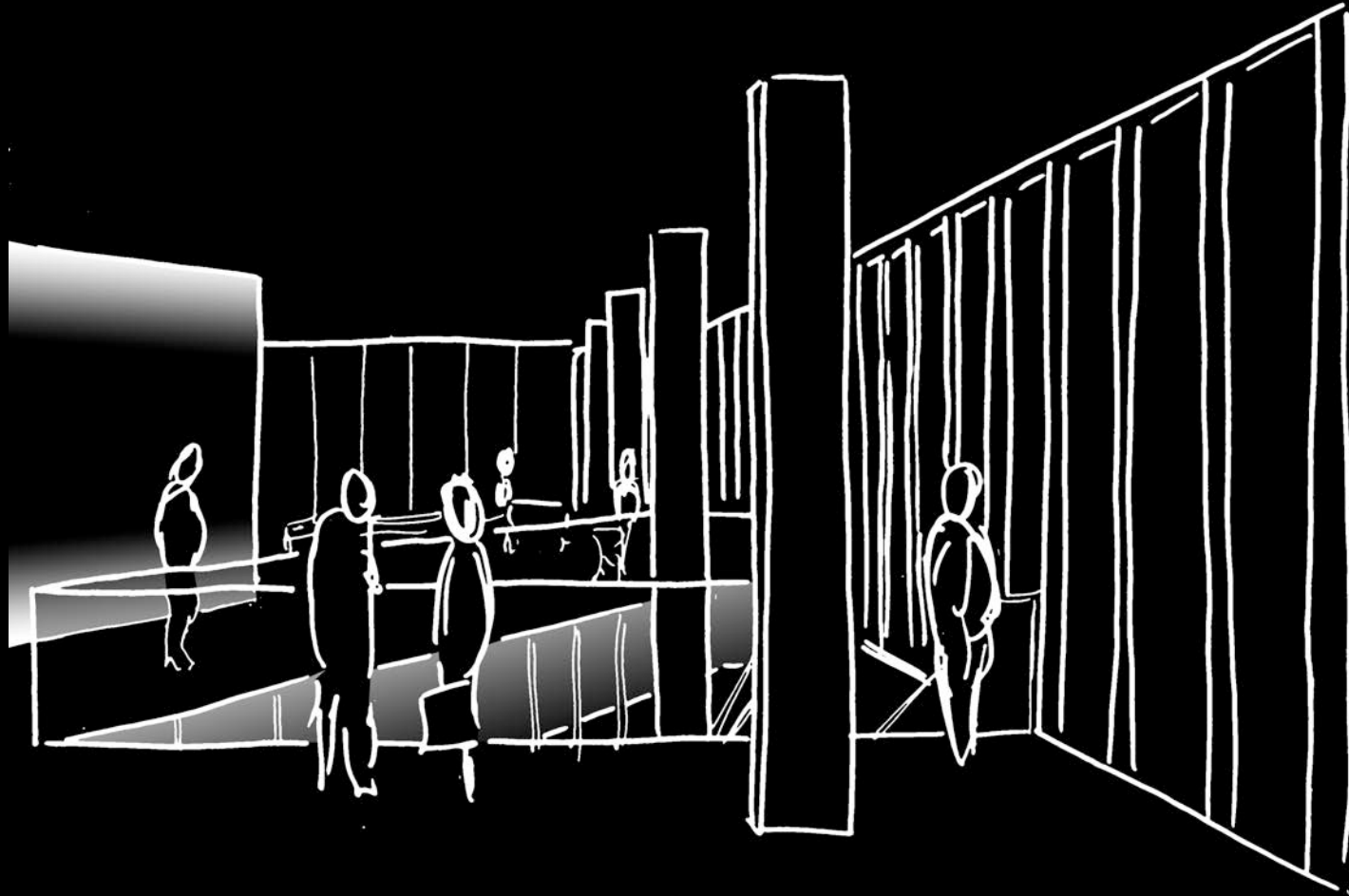
**Lobby**

Multi-Use

Shop

# THE CLARK

Building Concept **Spaces**



Terrace

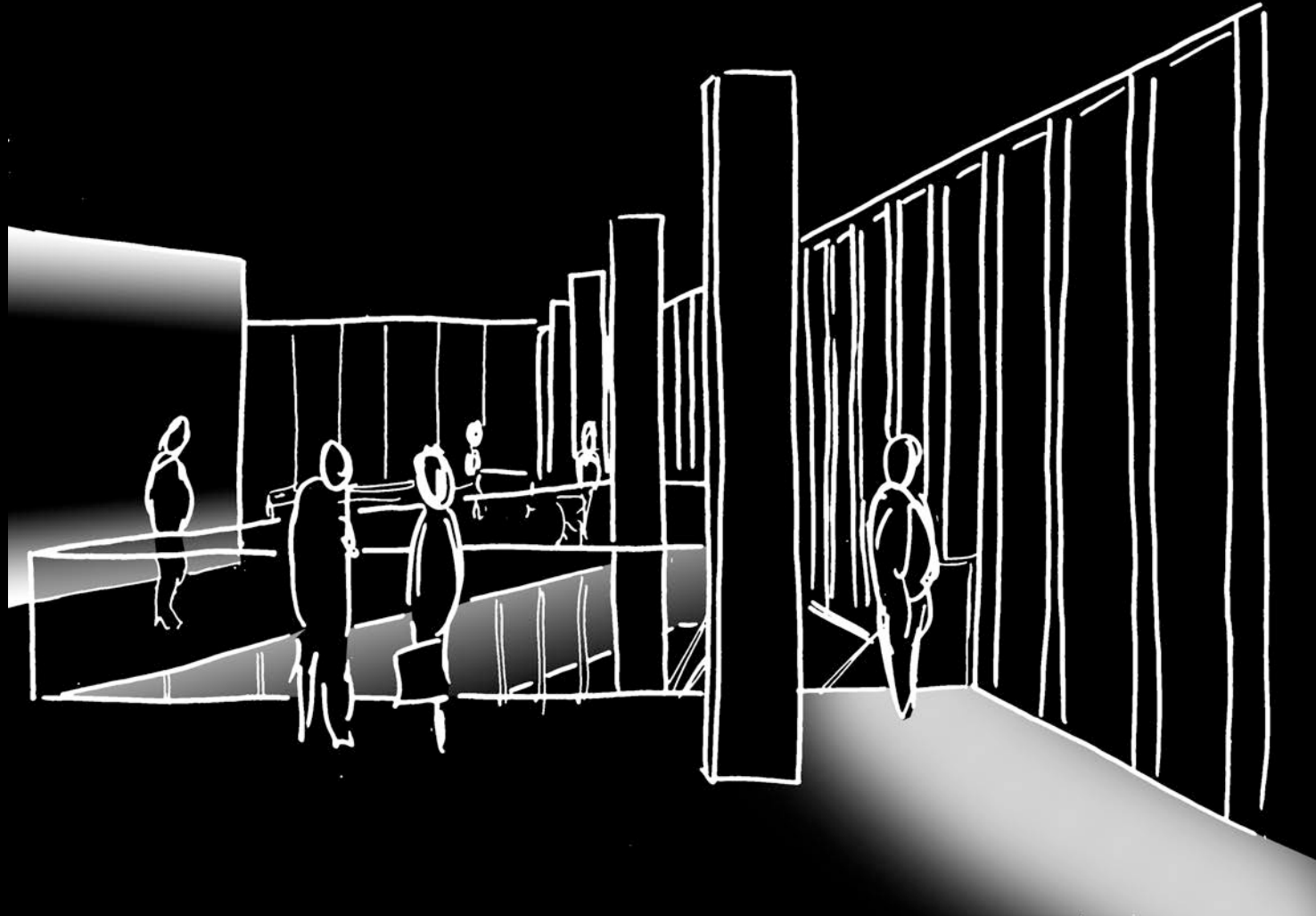
**Lobby**

Multi-Use

Shop

# THE CLARK

Building Concept **Spaces**



Terrace

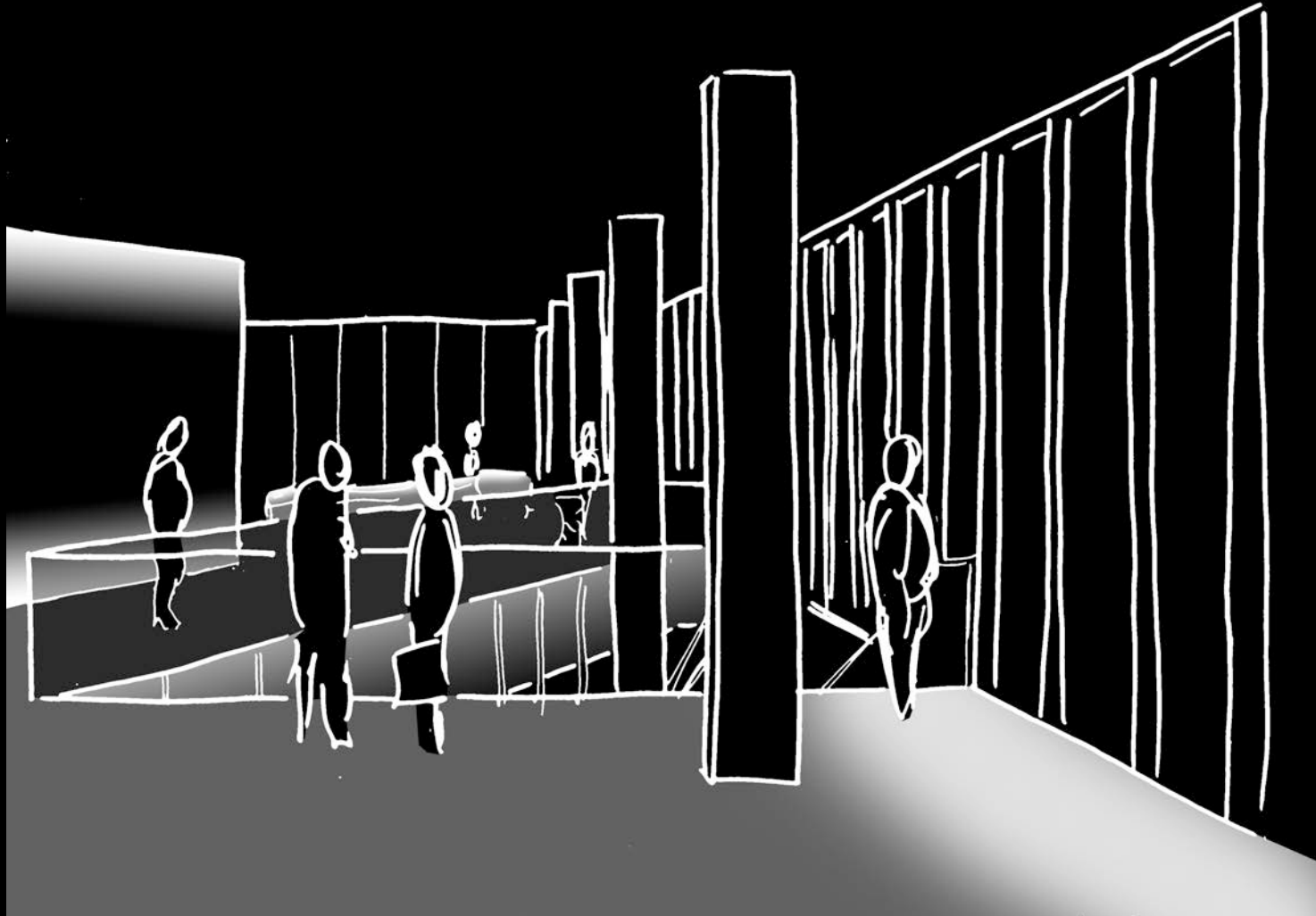
**Lobby**

Multi-Use

Shop

# THE CLARK

Building Concept **Spaces**



Terrace

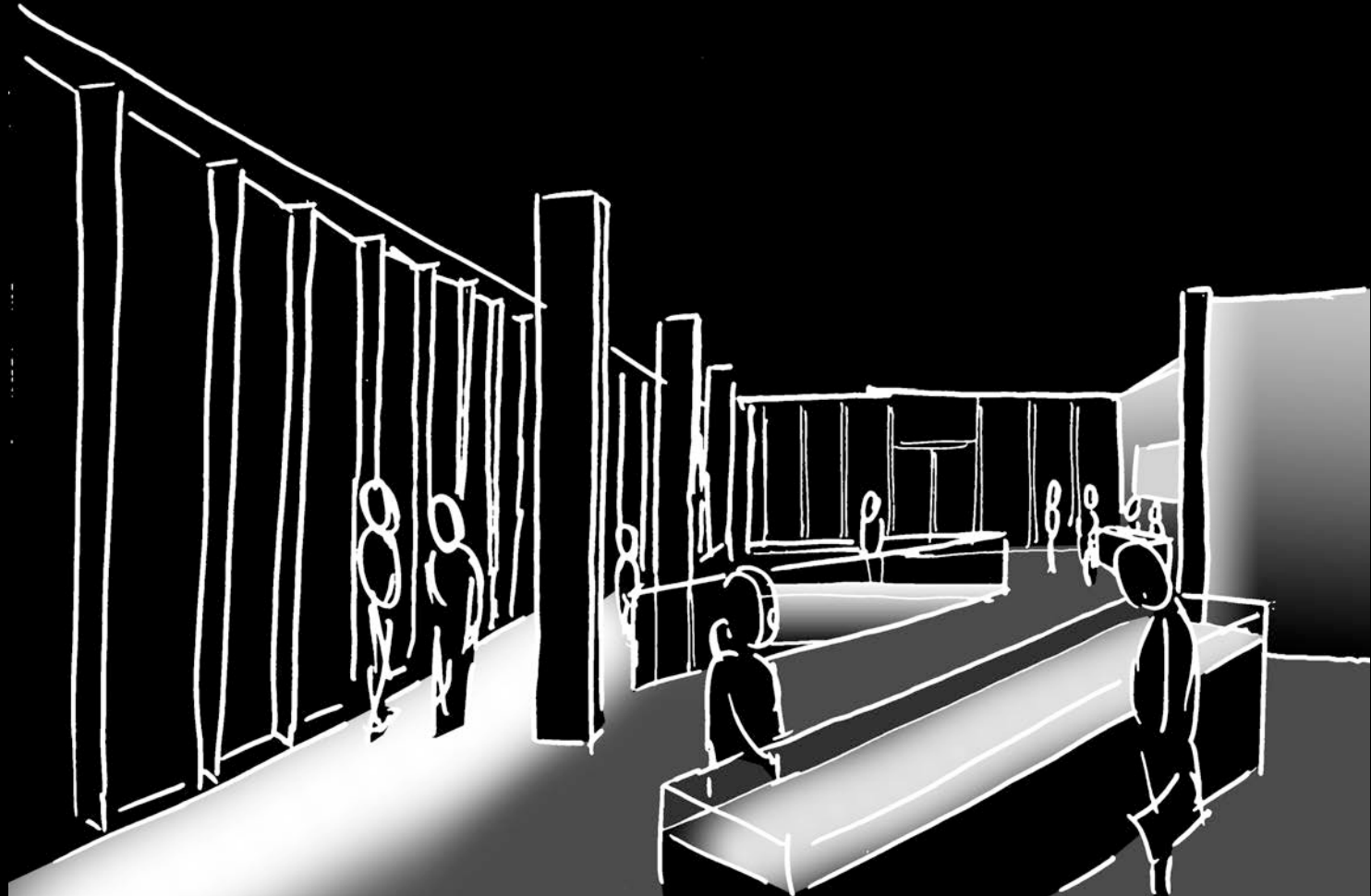
**Lobby**

Multi-Use

Shop

# THE CLARK

Building Concept **Spaces**



Terrace

**Lobby**

Multi-Use

Shop

# THE CLARK

Building Concept **Spaces**

## Equipment

- Wall washer
- Wall grazer
- Recessed down lights



Terrace

**Lobby**

Multi-Use

Shop

# THE CLARK

Building Concept **Spaces**

## Criteria

- Showcase artwork appropriately
- Enhance the “Materiality, Tactility, and Emptiness”
- Respect the natural light in the space
- Limit light trespass
- Limit sky glow
- Control glare
- High CRI
- $E_h$  range: 40 to 200 lux
- $E_v$  of 200 lux



Terrace

Lobby

**Multi-Use**

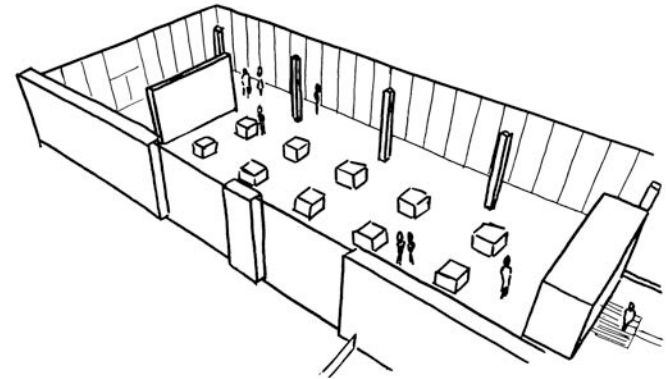
Shop

# THE CLARK

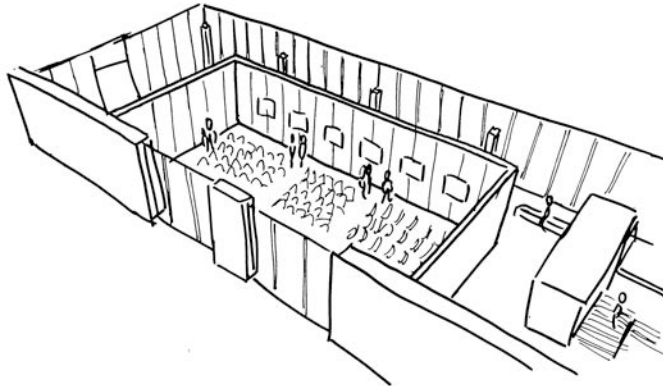
Building Concept Spaces

## Designs

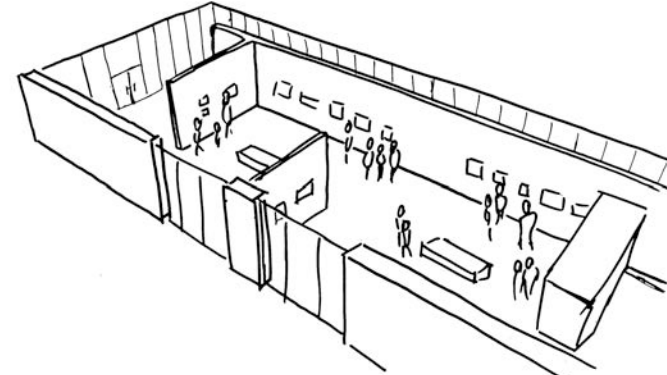
1. Ando's walls
2. Backlit ceiling
3. Ceiling wash



Layout B: Exhibit



Layout A: Conference



Layout C: Gallery

Terrace

Lobby

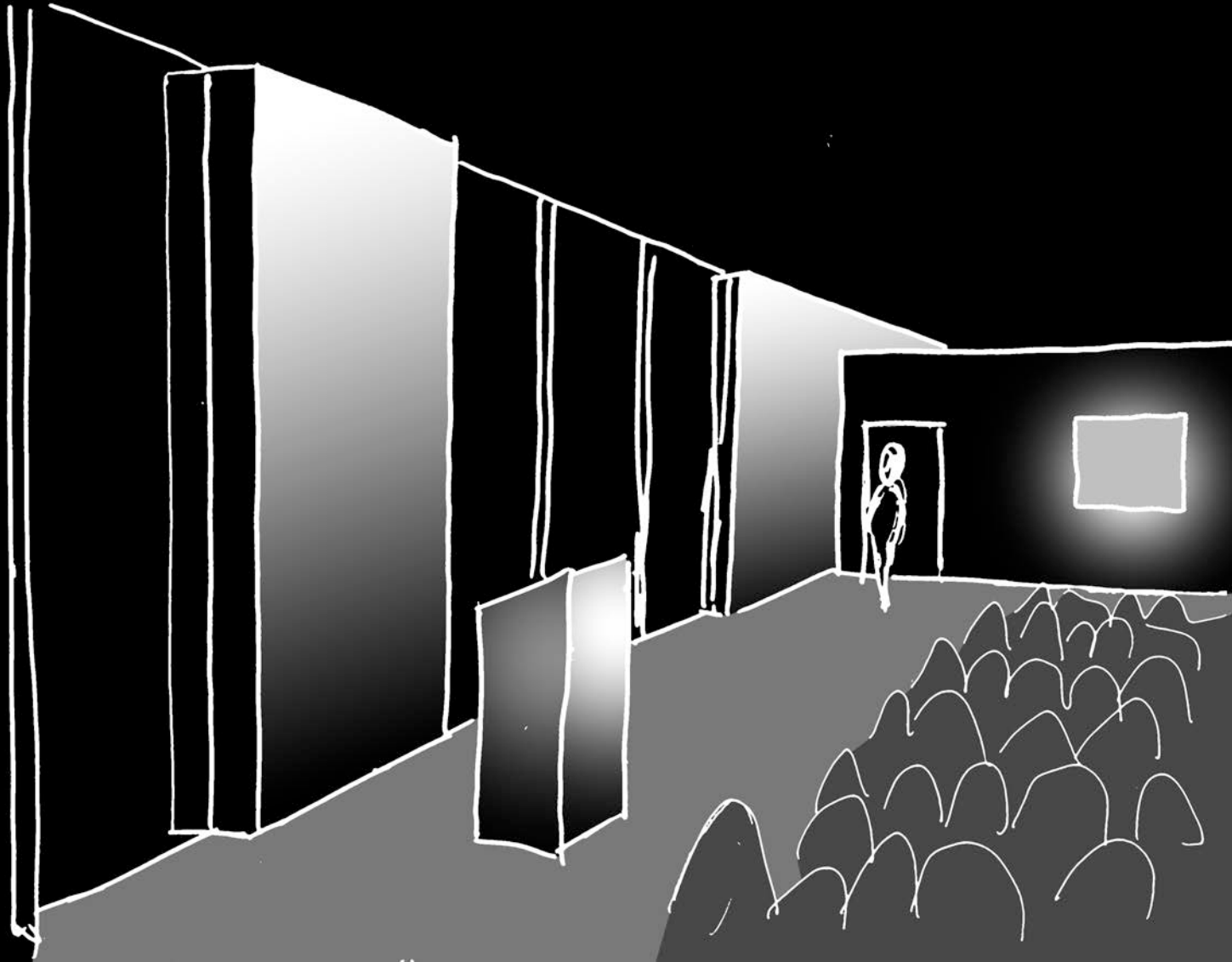
**Multi-Use**

Shop



# THE CLARK

Building Concept **Spaces**



1A

Terrace

Lobby

**Multi-Use**

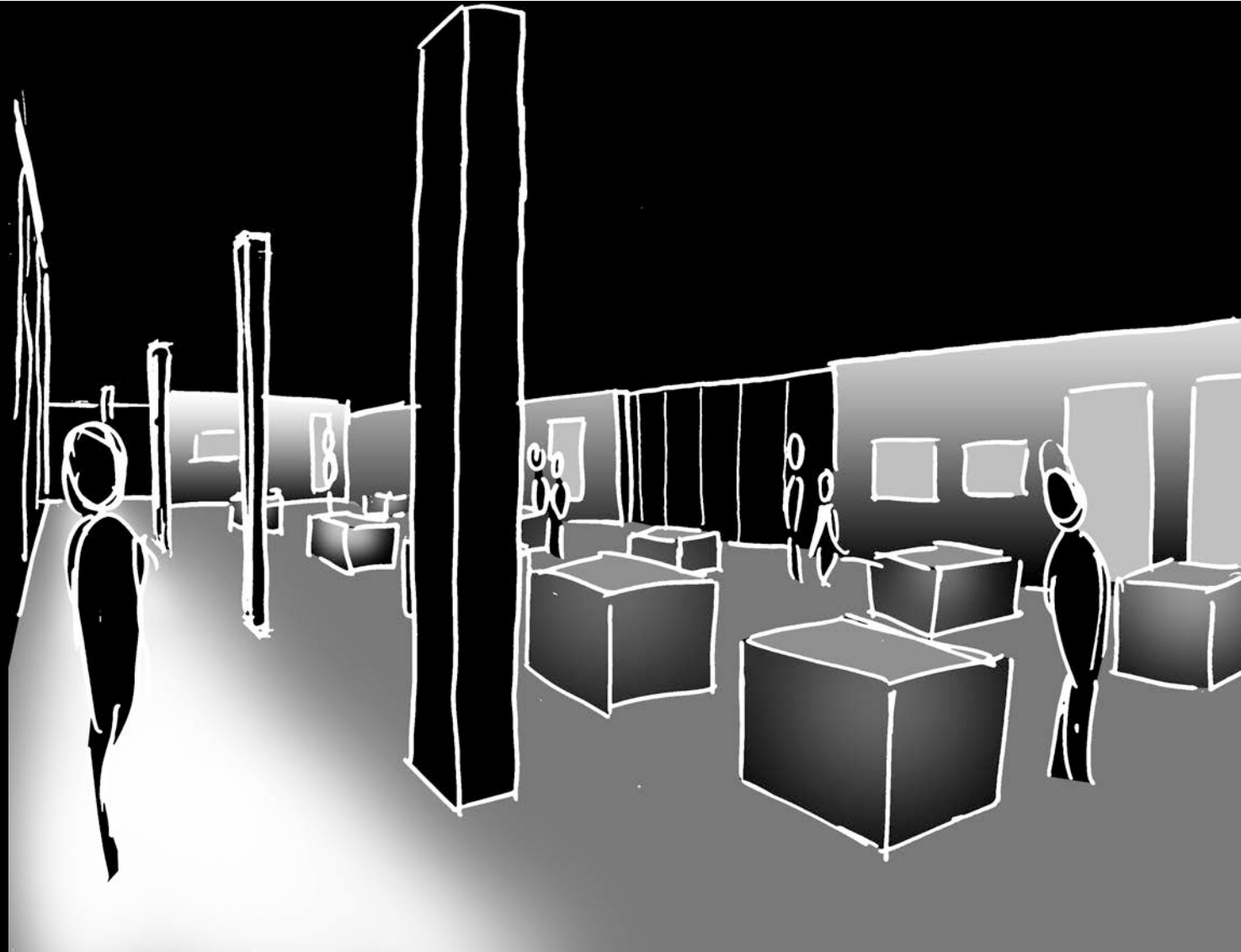
Shop

# THE CLARK

Building

Concept

**Spaces**



1B

Terrace

Lobby

**Multi-Use**

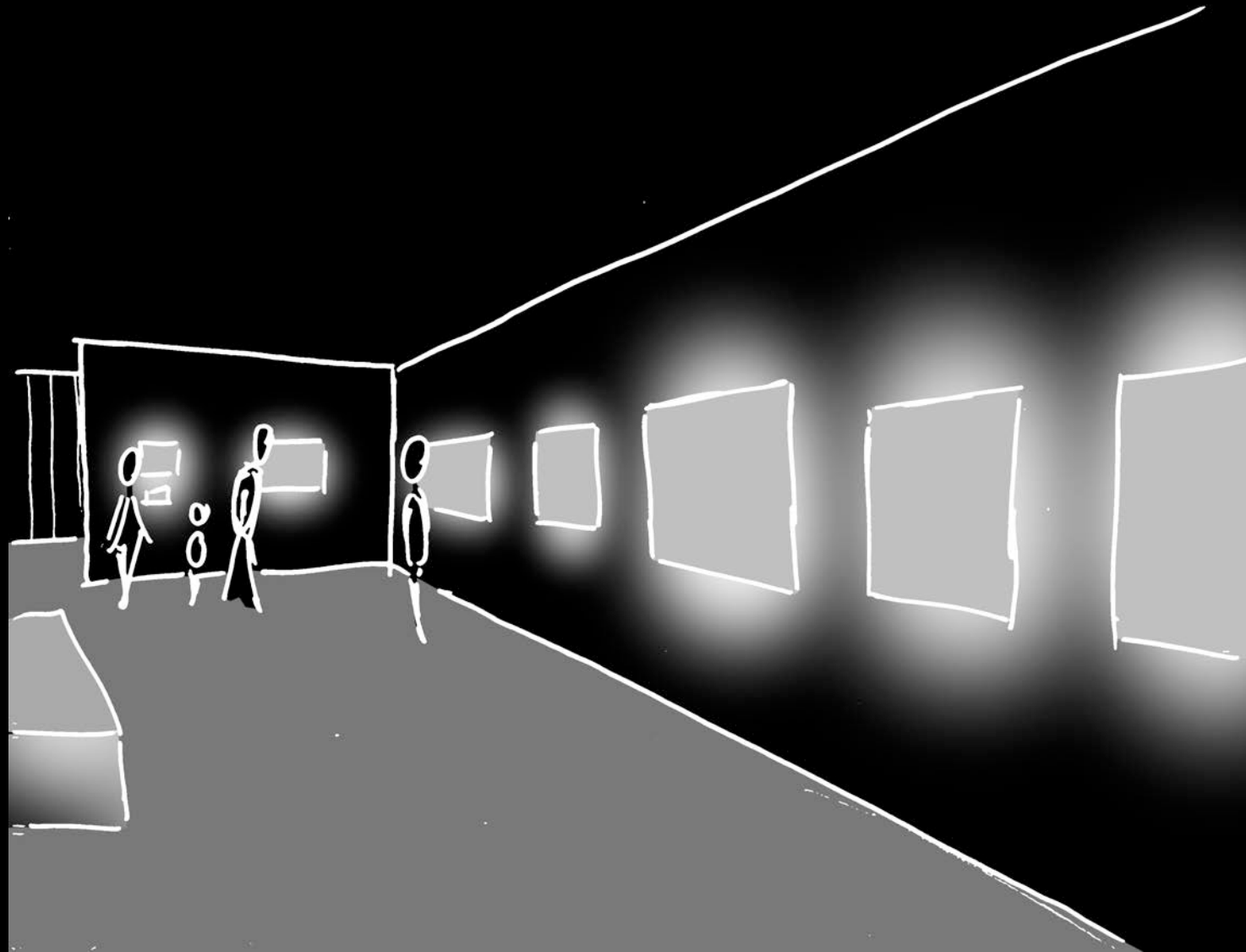
Shop

# THE CLARK

Building

Concept

**Spaces**



1C

Terrace

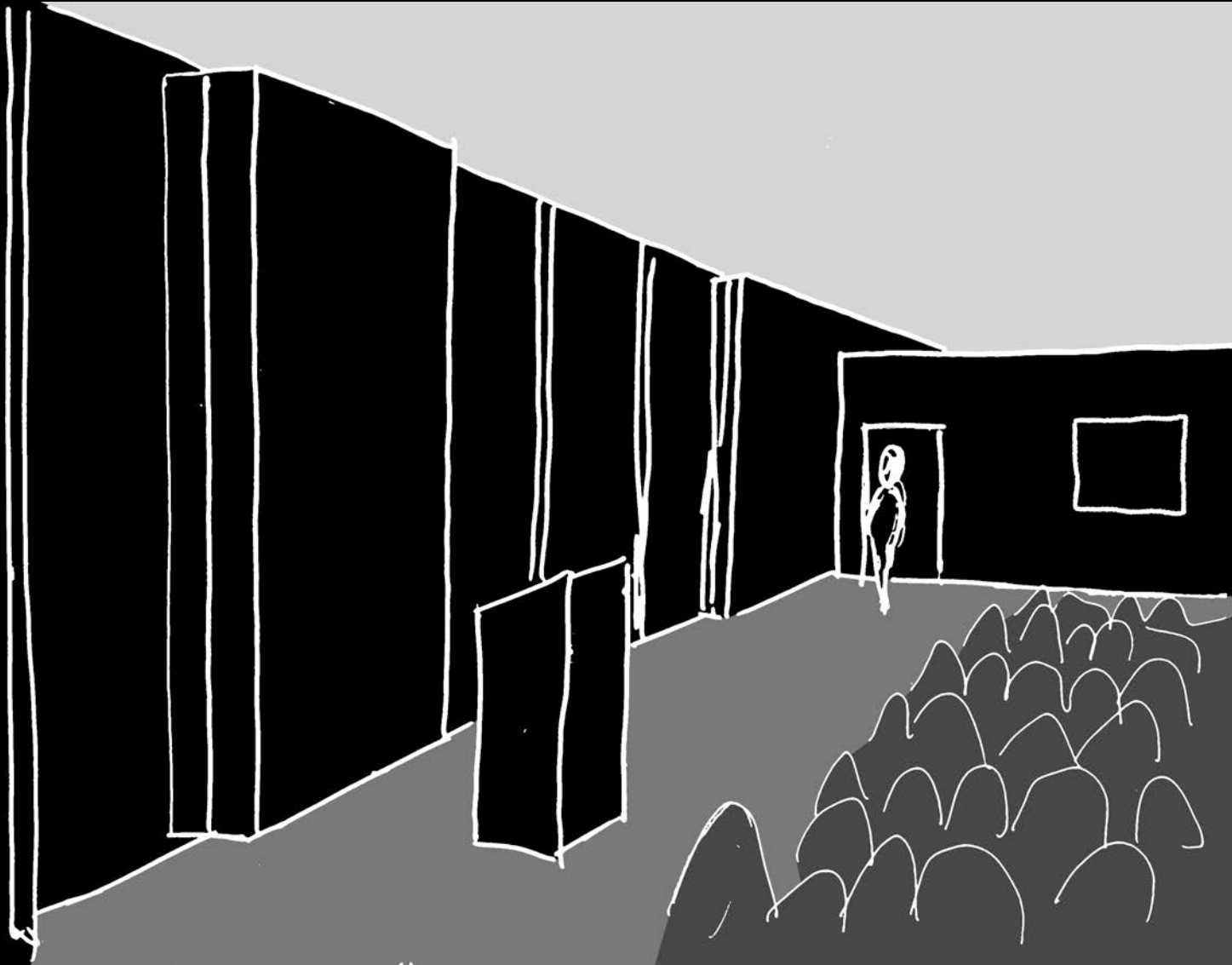
Lobby

**Multi-Use**

Shop

# THE CLARK

Building Concept **Spaces**



2A

Terrace

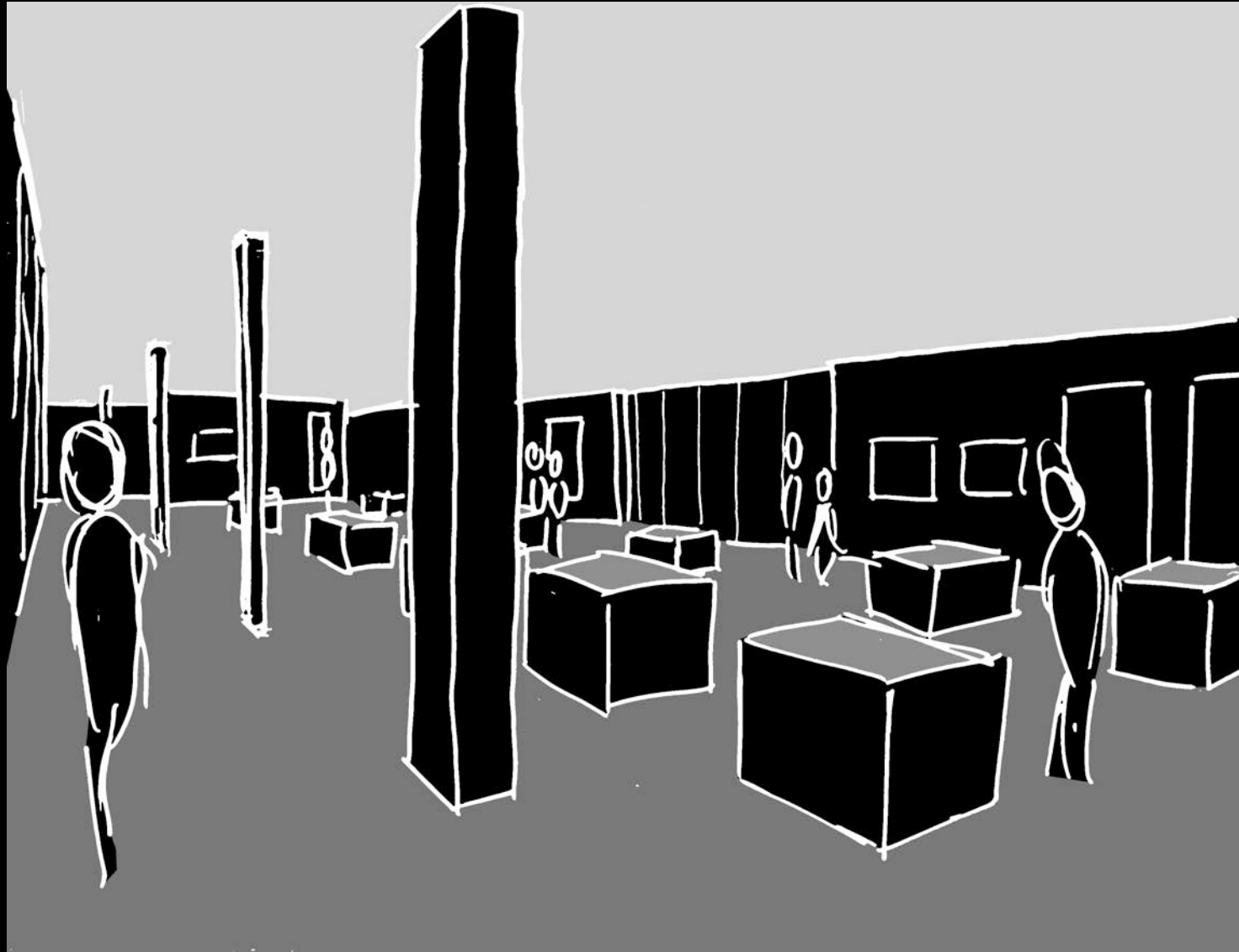
Lobby

**Multi-Use**

Shop

# THE CLARK

Building Concept **Spaces**



2B

Terrace

Lobby

**Multi-Use**

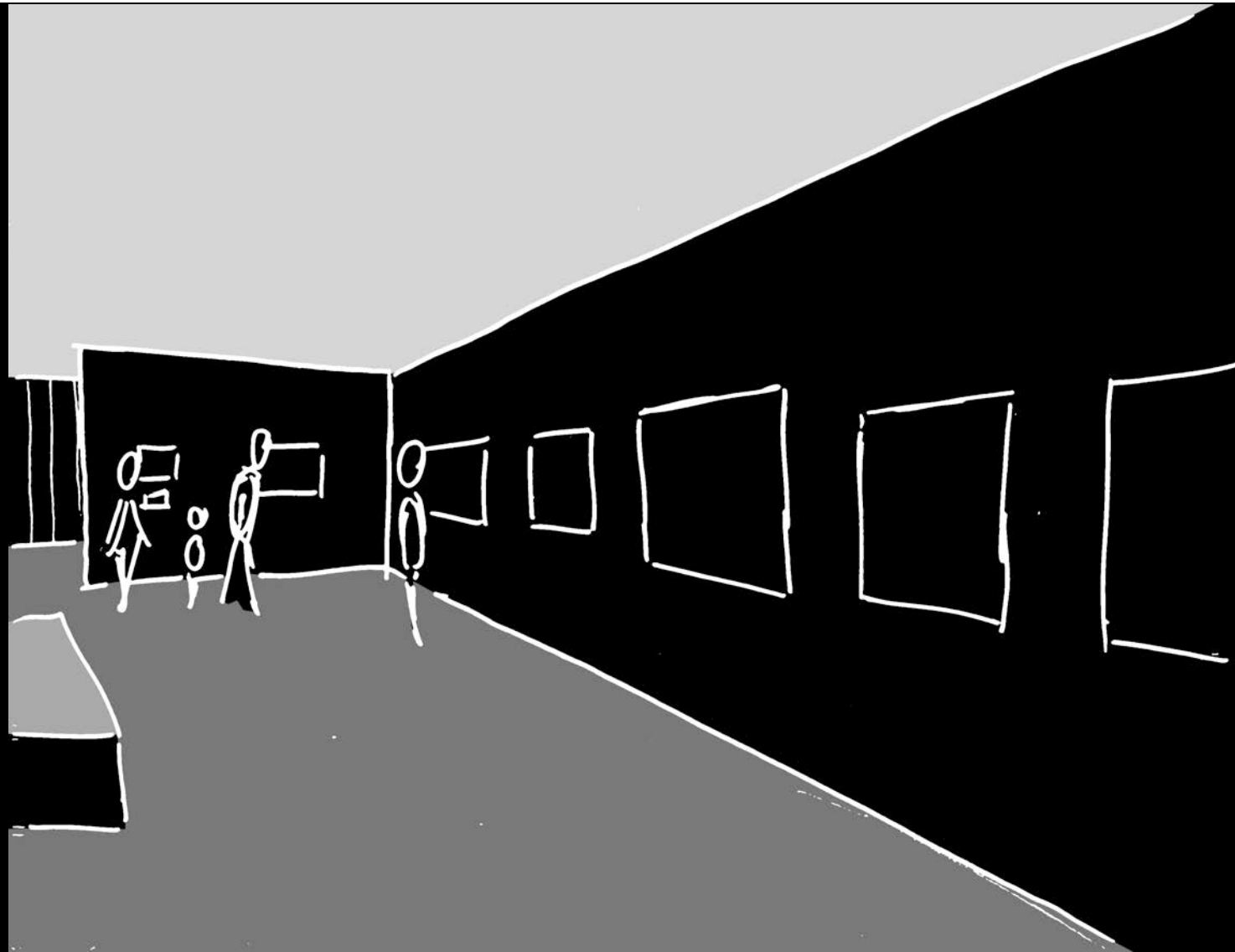
Shop

# THE CLARK

Building

Concept

**Spaces**



2C

Terrace

Lobby

**Multi-Use**

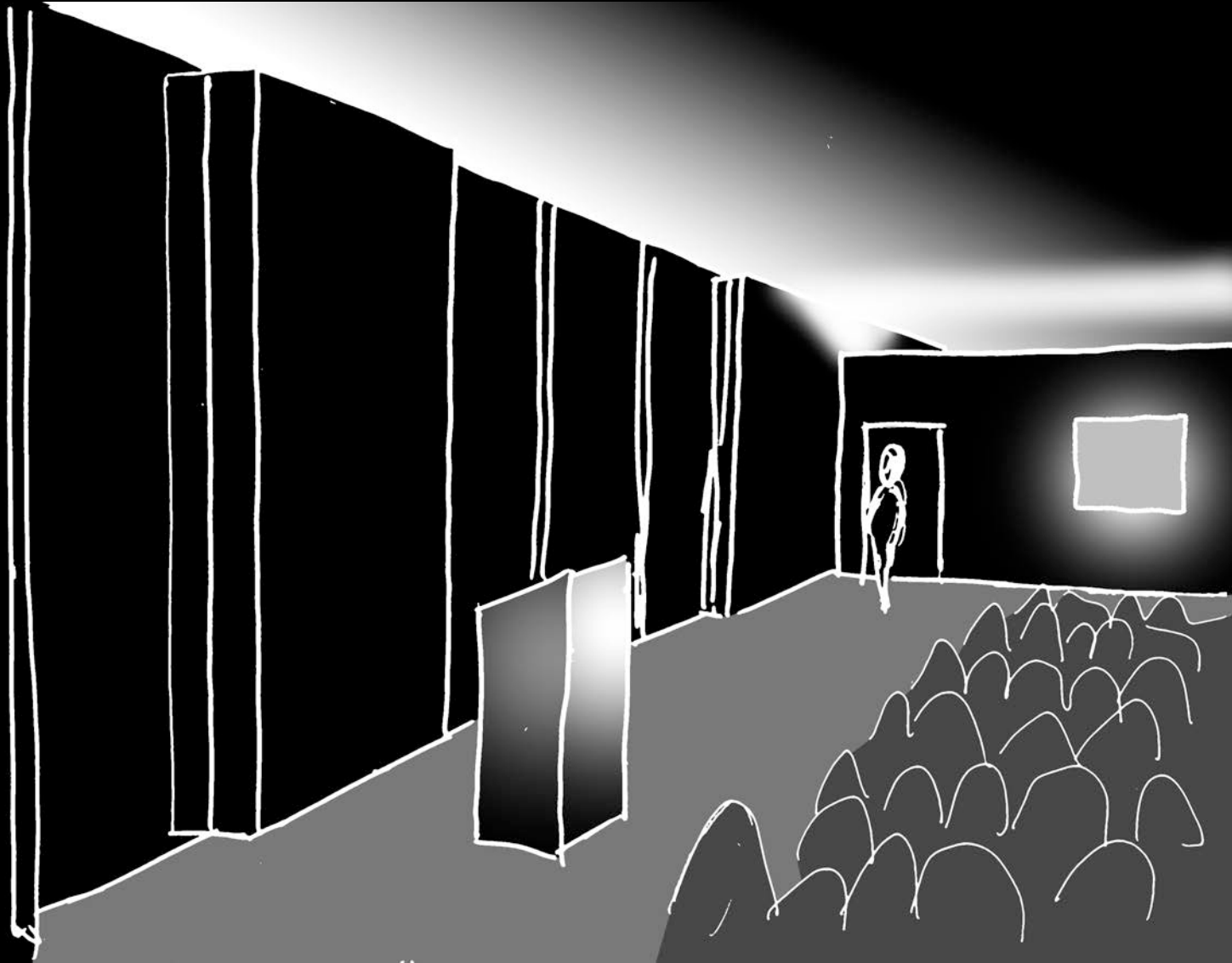
Shop

# THE CLARK

Building

Concept

**Spaces**



3A

Terrace

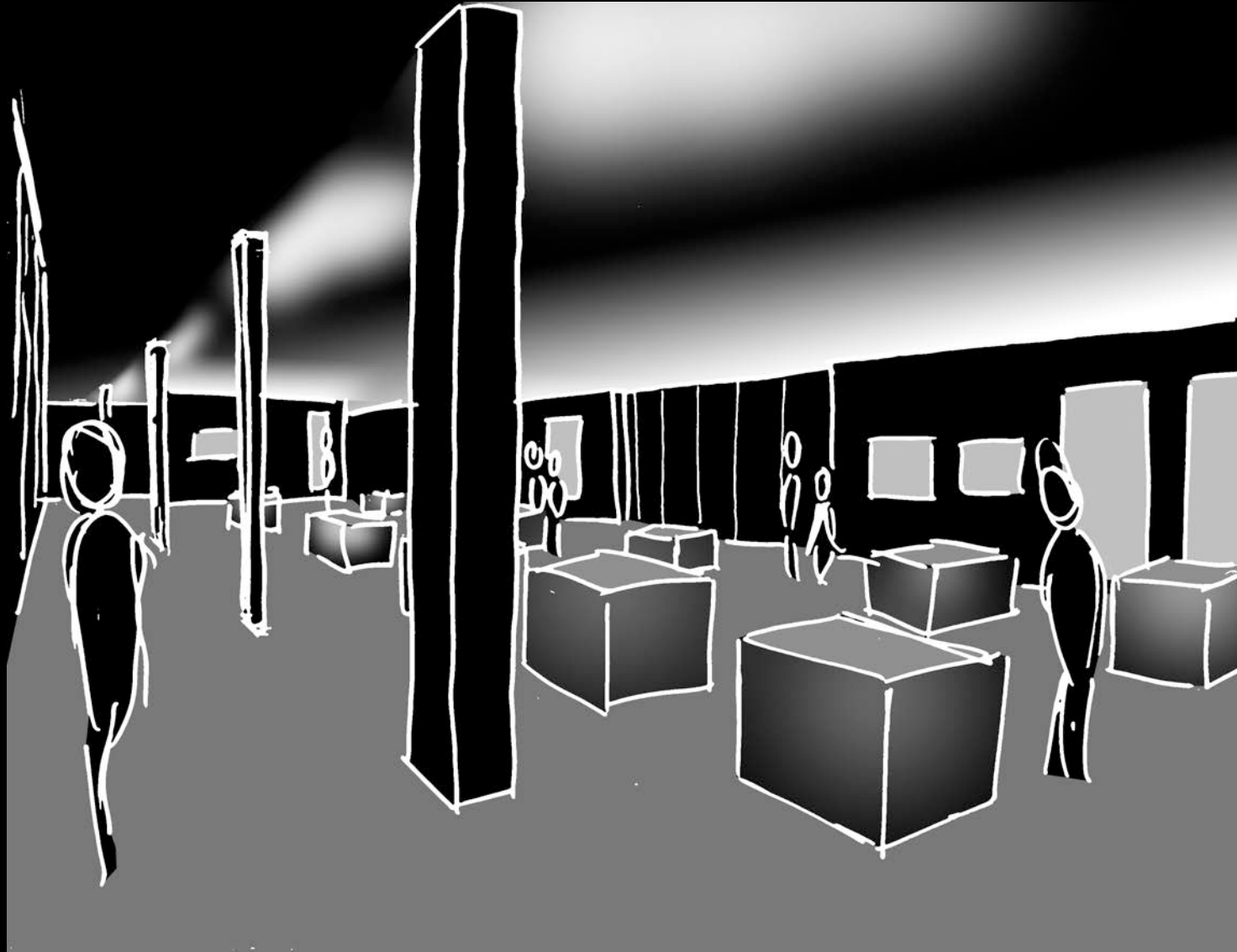
Lobby

**Multi-Use**

Shop

# THE CLARK

Building Concept **Spaces**



3B

Terrace

Lobby

**Multi-Use**

Shop

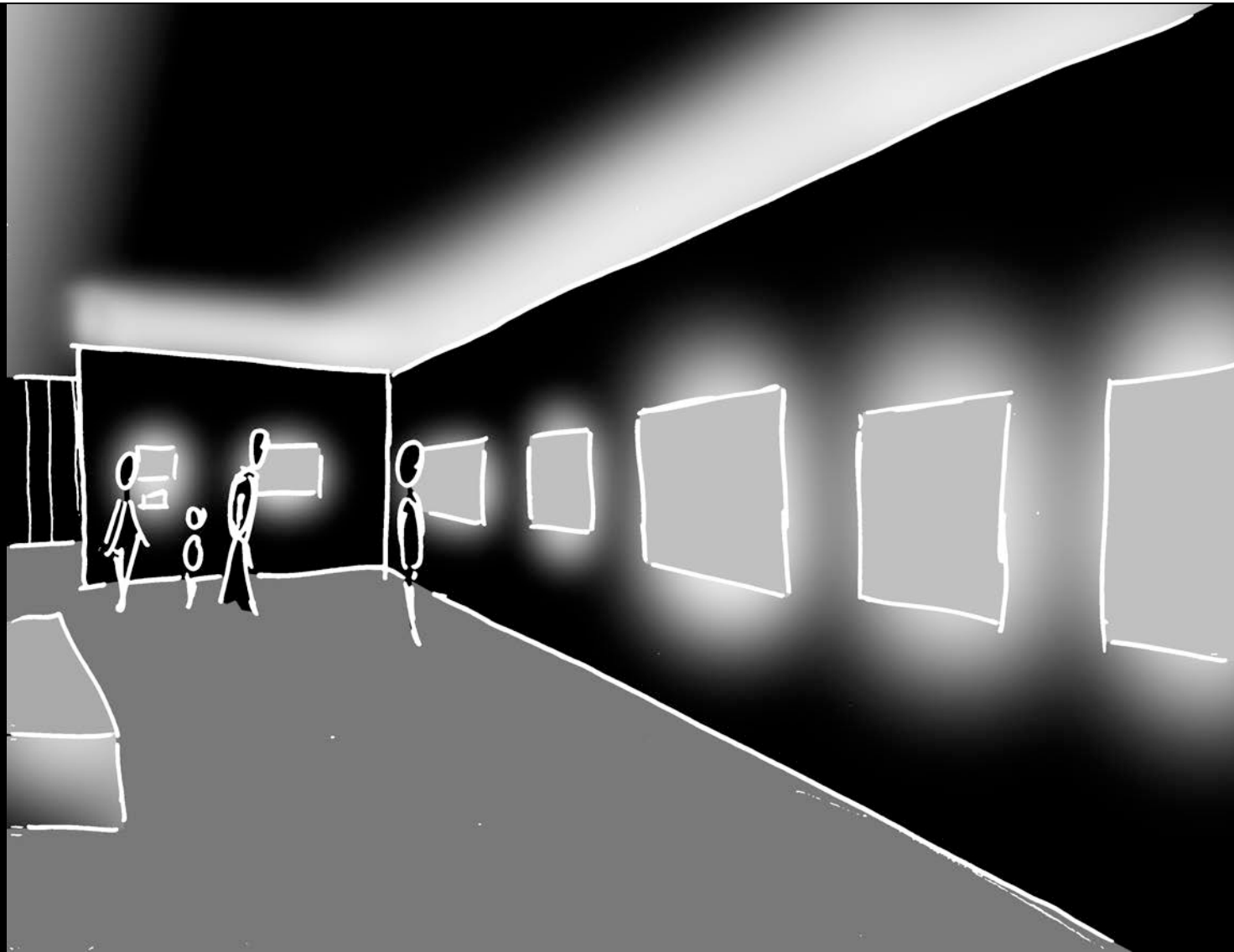


# THE CLARK

Building

Concept

**Spaces**



3C

Terrace

Lobby

**Multi-Use**

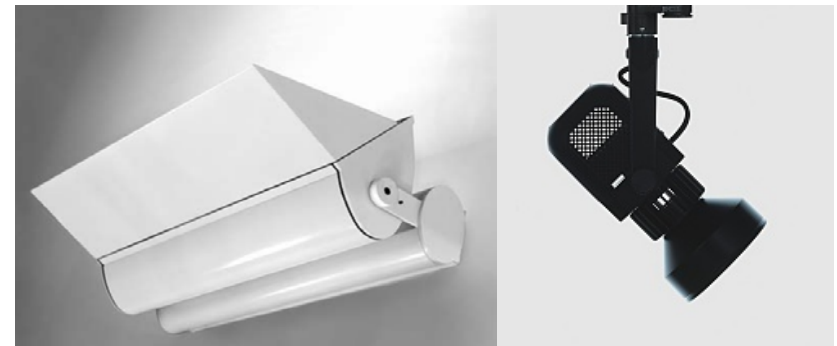
Shop

# THE CLARK

Building Concept **Spaces**

## Equipment

- Wall washing
- Ceiling washing
- Recessed linear fluorescent ambient light system
- Flexible track system



Terrace

Lobby

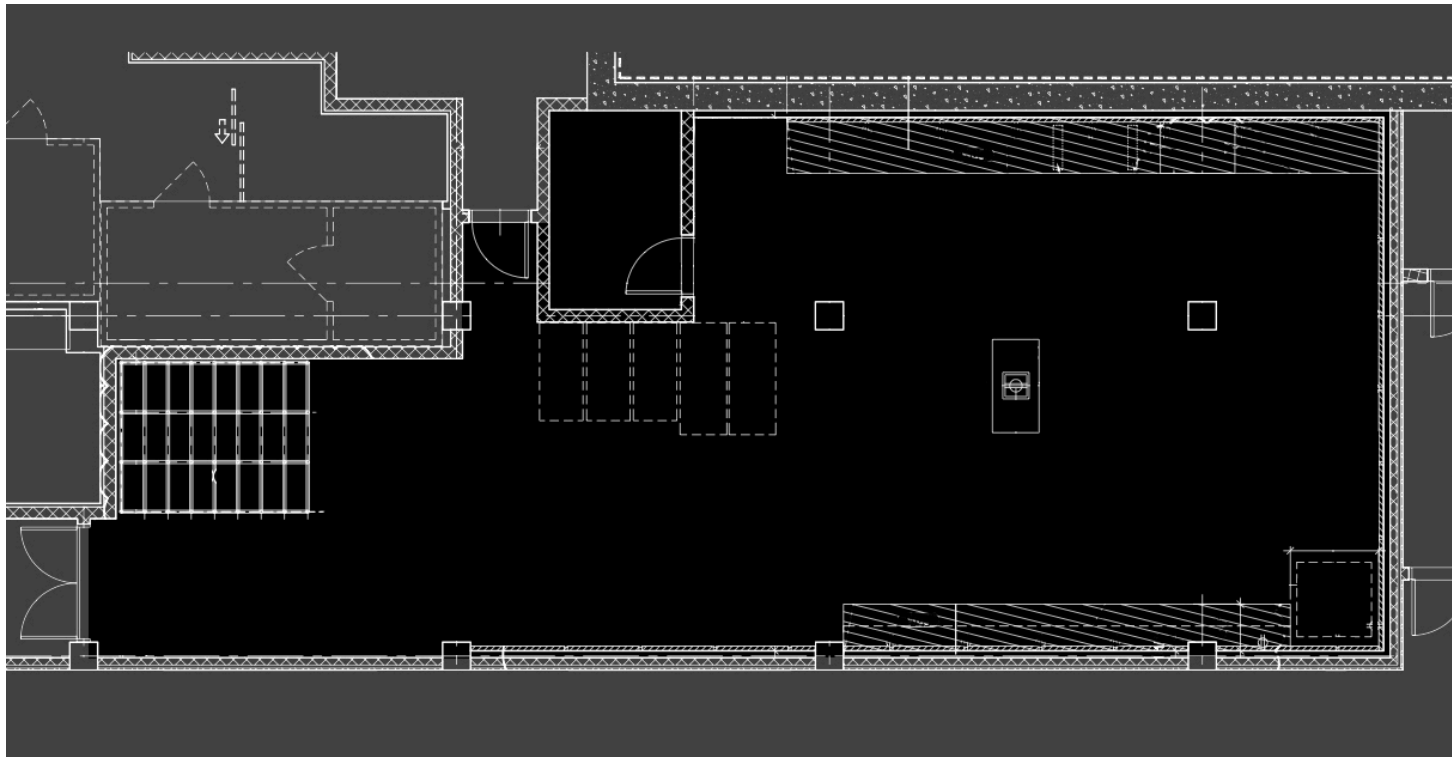
**Multi-Use**

Shop

# THE CLARK

## Criteria

- Visual clarity
- Uniform light
- Sufficient color rendering
- Reduce Glare
- $E_h$  of 500 lux



Terrace

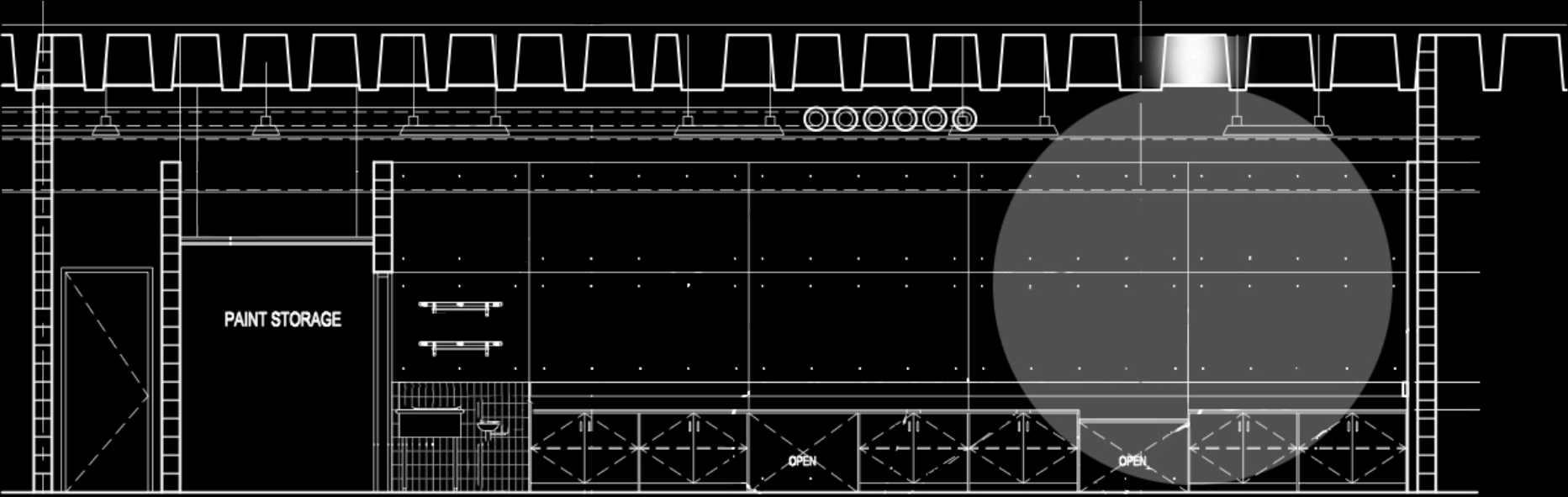
Lobby

Multi-Use

**Shop**

# THE CLARK

Building Concept **Spaces**



Terrace

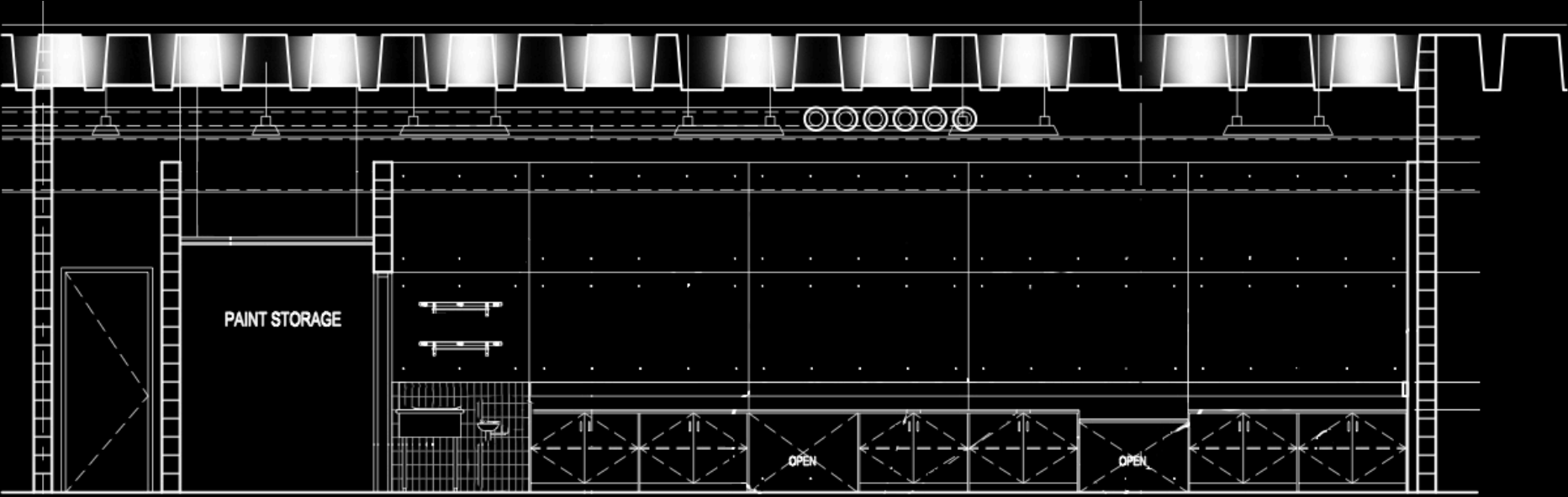
Lobby

Multi-Use

**Shop**

# THE CLARK

Building Concept **Spaces**



Terrace

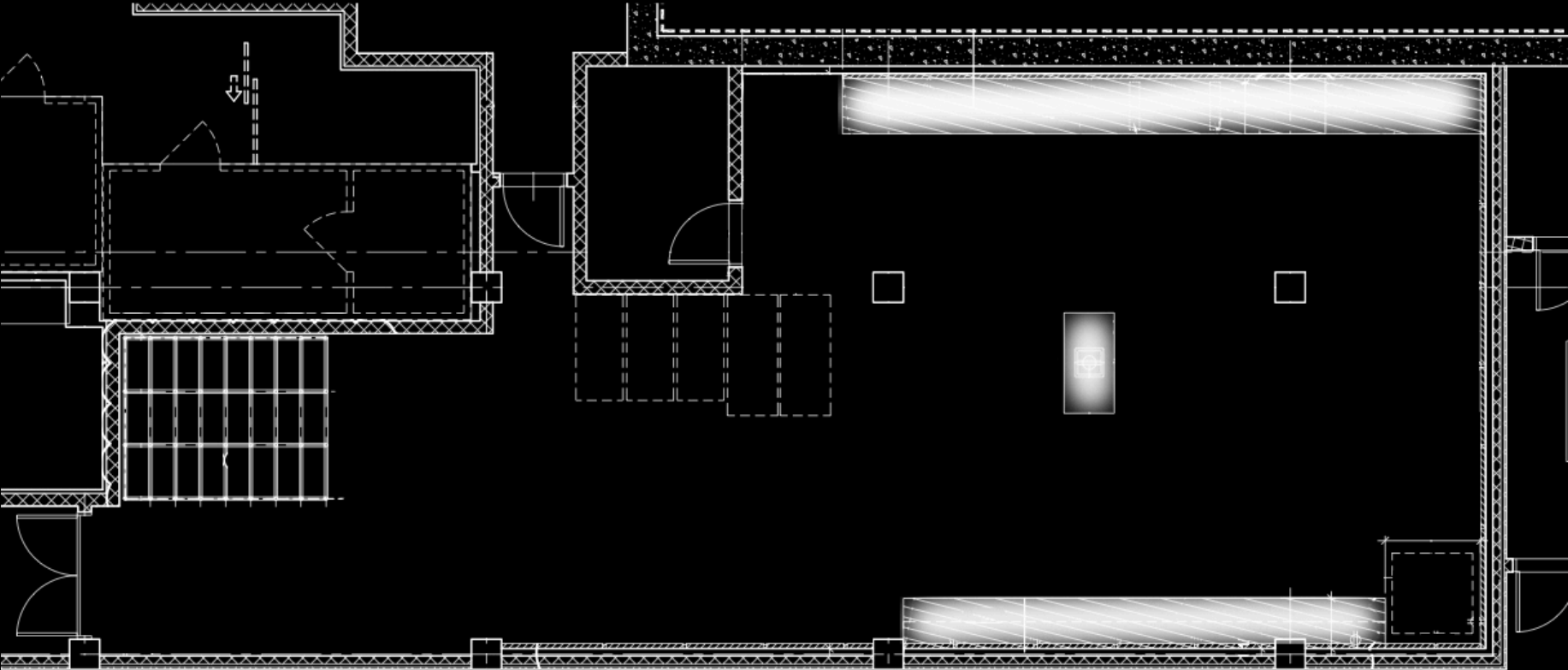
Lobby

Multi-Use

**Shop**

# THE CLARK

Building Concept **Spaces**



Terrace

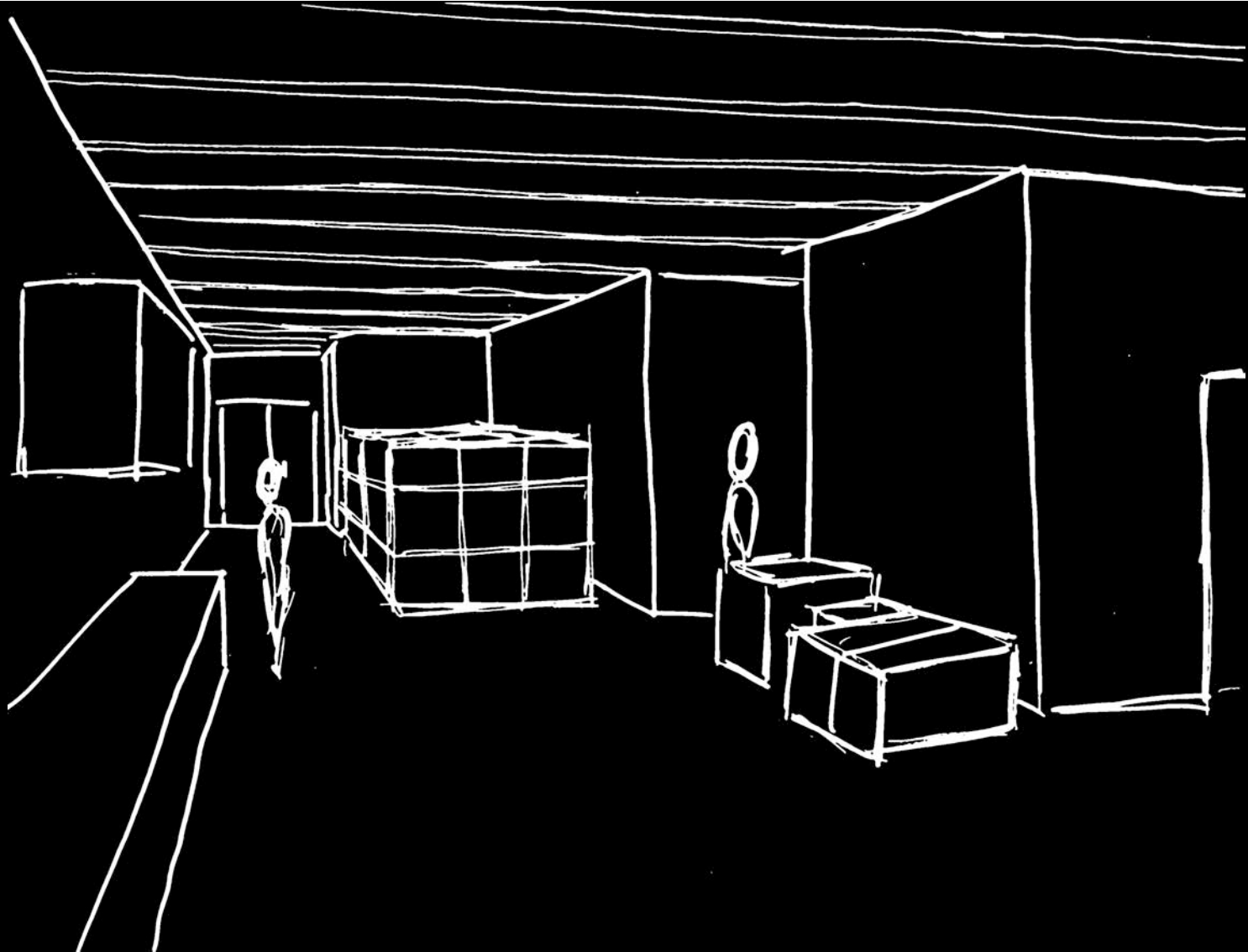
Lobby

Multi-Use

**Shop**

# THE CLARK

Building Concept **Spaces**



Terrace

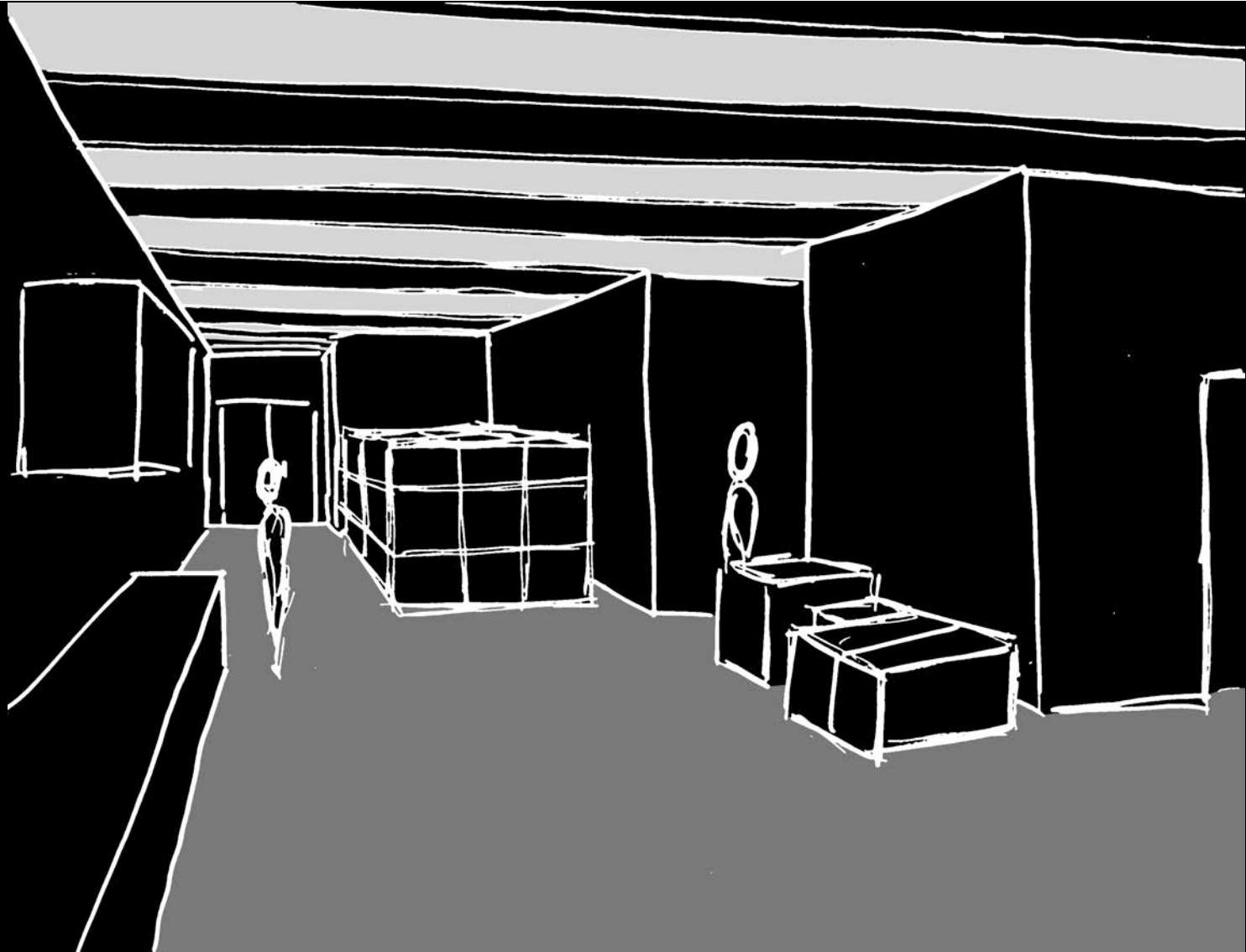
Lobby

Multi-Use

**Shop**

# THE CLARK

Building Concept **Spaces**



Terrace

Lobby

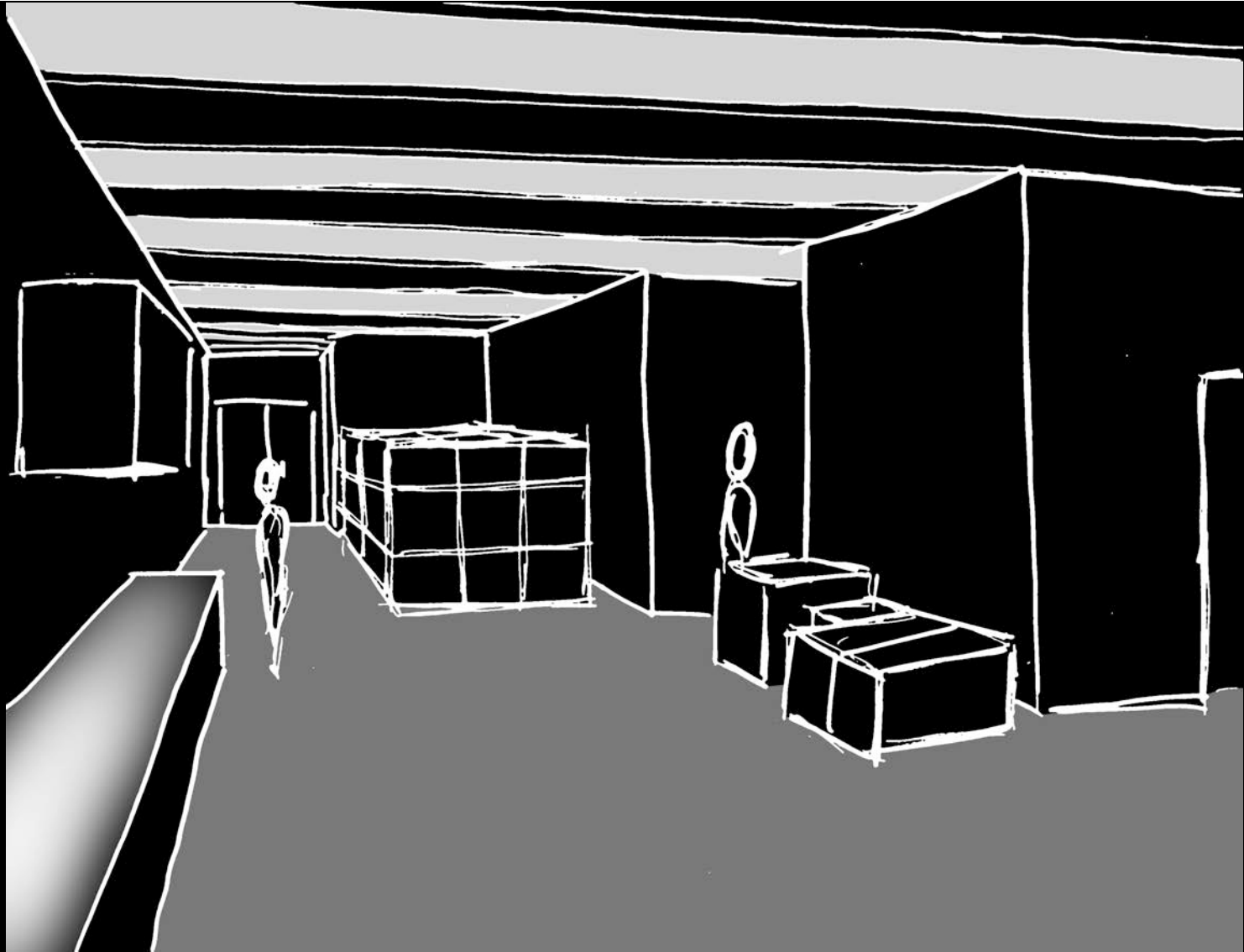
Multi-Use

**Shop**



# THE CLARK

Building Concept **Spaces**



Terrace

Lobby

Multi-Use

**Shop**

# THE CLARK

Building Concept **Spaces**

## Equipment

- Efficient linear fluorescent system
- Task lighting over work benches



Terrace

Lobby

Multi-Use

**Shop**

# THE CLARK

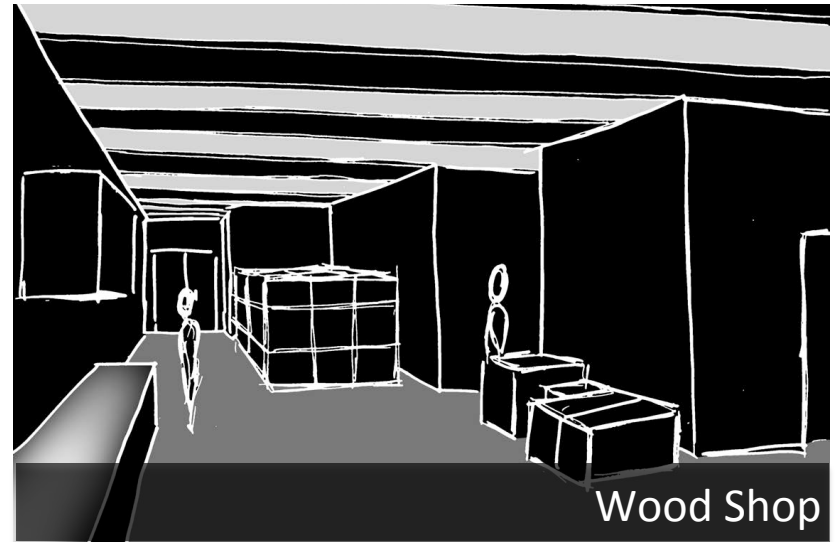
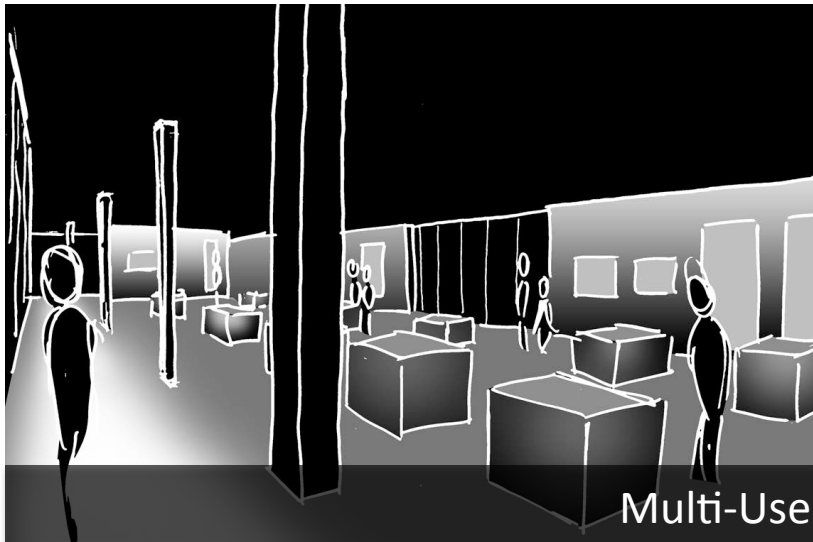
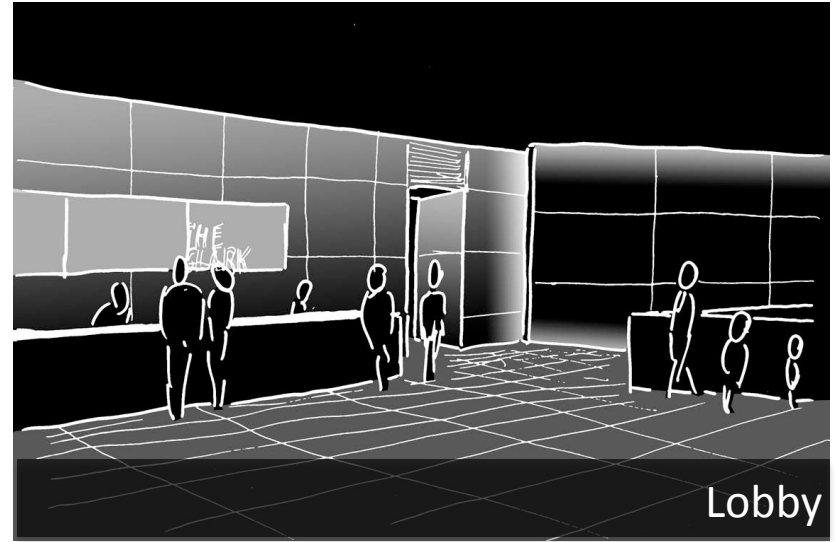
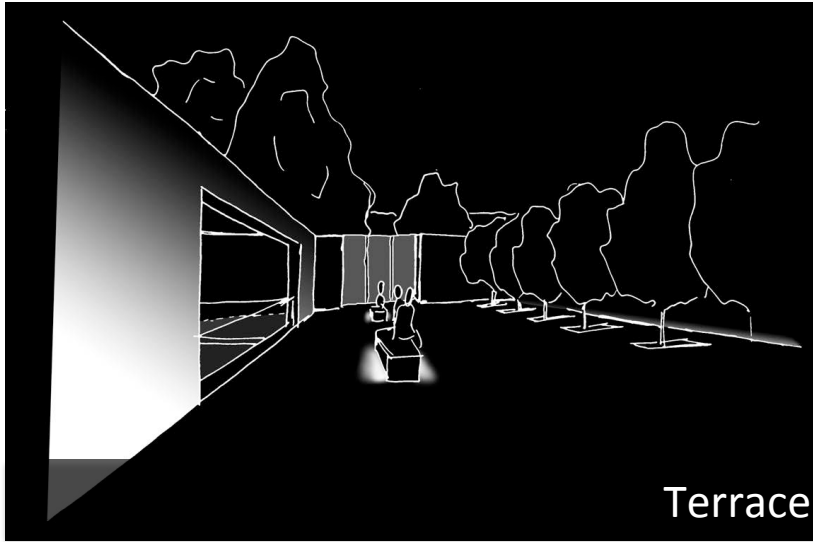
## Resolutions

- Enhance the “materiality, tactility, and emptiness” of the walls
- Respect the natural light in the space
- Use light to guide occupants through Ando’s circulatory paths



# THE CLARK

## Building Concept Spaces



# THE CLARK

Building **Concept** Spaces

