

**URBN CENTER & URBN
CENTER ANNEX
PHILADELPHIA, PA**

Lighting Proposal Memo

JOHNATHAN W. COOK

Option: Lighting/Electrical

Faculty Consultant: Dr. Kevin W. Houser

Submission: September 10, 2012

LIGHTING PROPOSAL MEMO

LARGE WORK PLACE: FASHION DESIGN STUDIO | PSYCHOLOGICAL IMPRESSIONS

Use | Location

The Fashion Design Studio is located on the third floor in the North-West corner of the URBN Center. The Fashion Design Studio will be used as a large working design studio for students. Fashion shows will be with held in this space as well. Class lectures and guest orientations will also accommodate this space.

Space | Dimensions | Finishes

7,830 square feet of flexible space make up this design studio. The layout of this space can vary from an open plan to an organized and divided arrangement of spaces. This flexibility is made possible with sliding wall panels. These panels double as art showcases and wall partitions. The unfinished ceiling reaches up to 14 feet.



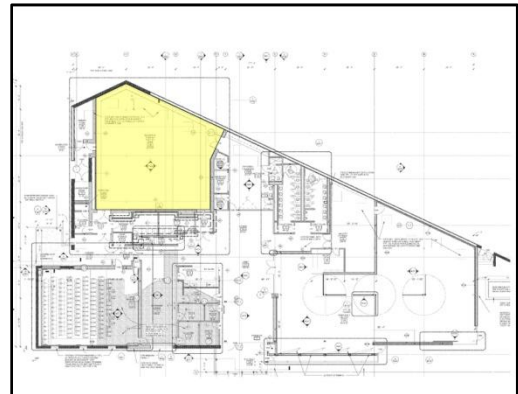
SPECIAL PURPOSE SPACE: BLACK BOX THEATER

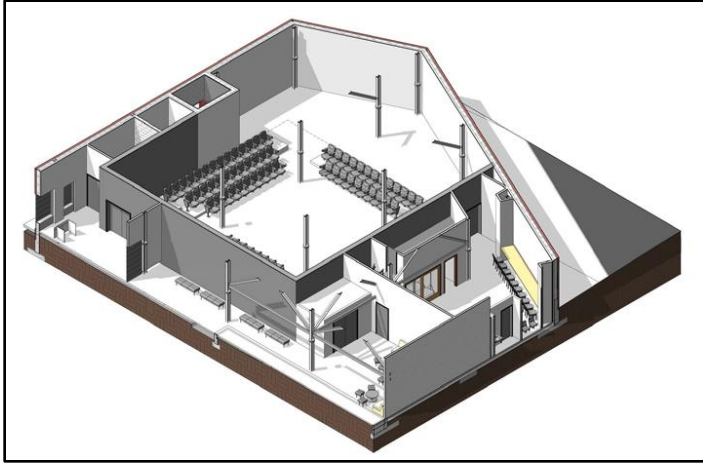
Use | Location

The Black Box Theater is located on the far North side of the URBN Center Annex. This theater will hold small student performances.

Space | Dimensions | Finishes

2,489 square feet encompass this theater. The theater will primarily have a black paint finish throughout the gypsum wall boards and unfinished ceiling. The ceiling maxes out at 16.5 feet.





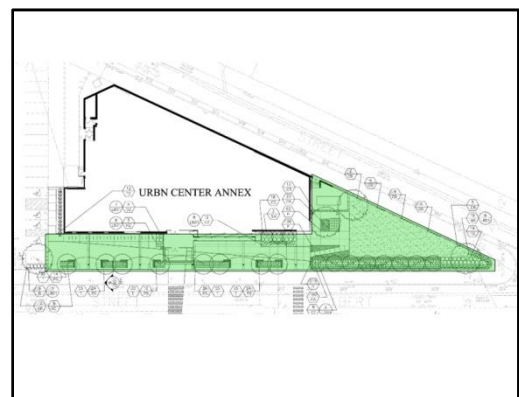
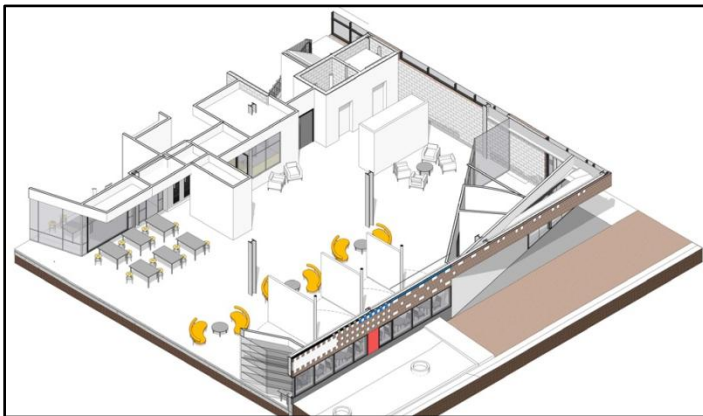
CIRCULATION SPACE: MAIN LOBBY | THREE SCHEMATIC DESIGN CONCEPTS

Use | Location

The Main Lobby of the URBN Center is located in the South-East corner of the building and the main entrance is adjacent to Market Street bridging the connection to the public with its exhibition functionality. A small cafe is located on the South facade providing snacks and beverages to the students as they transition from class to class. This lobby also serves as a student lounge providing an area for students to converge, communicate, and chow down.

Space | Dimensions | Finishes

The lobby experiences a variety of different ceiling heights ranging from 14 feet to 28 feet. This difference in ceiling heights imposes the architectural sensation of compression and expansion as one passes through the space. The Lobby encompasses 3,480 square feet.



OUTDOOR SPACE: URBN CENTER ANNEX GARDEN & SIDEWALK

Use | Location

The URBN Center Annex's garden and sidewalk function as a relaxation area where one can view old murals. This space also takes on the role of the transition from the URBN Center to the URBN Center Annex. Located on the West side of the building this space receives a lot of early daylight. The transition through this space into the expanded Pearlstein Art Gallery is crucial in the act of inviting students and the public into the Gallery.

Space | Dimensions | Finishes

The Garden makes up the rest of the block towards the West side of the building engulfing 12,100 square feet. Cast-in-place concrete makes up the sidewalks. Grass will primarily make up the garden while shrubs will line the South perimeter of the garden. Along the North Perimeter of the Garden is where the preserved mural is located on a half brick wall.