

The image shows the interior of a large concert hall. The seating area is filled with rows of dark red seats, arranged in a semi-circular pattern. The stage is at the far end, with a wooden podium in the center. The walls are light-colored, and there are several windows and doors visible. The lighting is warm and focused on the stage area.

Wentz Concert Hall and Fine Arts Center

Schematic Lighting Design

Will Lesieutre

- *"One of the most 'live' rooms in the area, its acoustics proved vivid and vibrant at all volume levels...Better still, the Wentz offered a clarity of orchestral detail lost in many other concert halls*
-Howard Reich, Chicago Tribune
- Campus/Downtown location
- Naperville's first art gallery



Project Background

- 171 E Chicago Ave
Naperville, Illinois
- Size: 57,000 ft²
- Completed in 2008
- 605 seats

- Owner: North Central College
- Architect: Loeb Schlossman and Hackl
- Lighting: Schuler Shook
- Acoustics: Talaske
- Construction: Gilbane

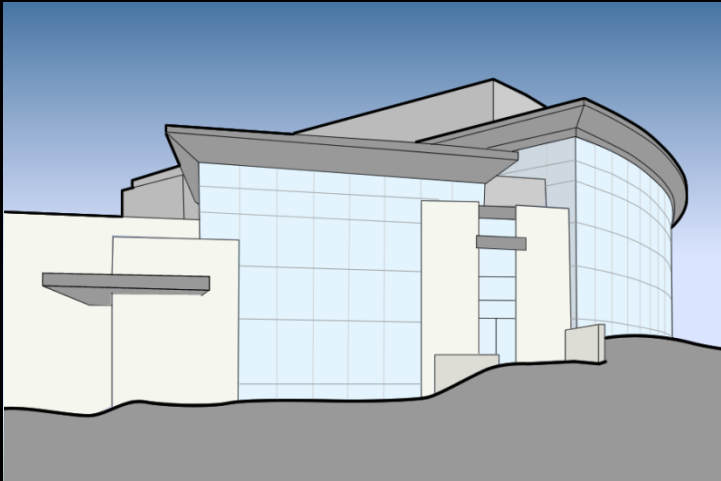


Aerial image via Bing Maps

Visual Theme: Welcome

Areas of Interest

Façade



Main Lobby



Concert Hall



Rehearsal Room



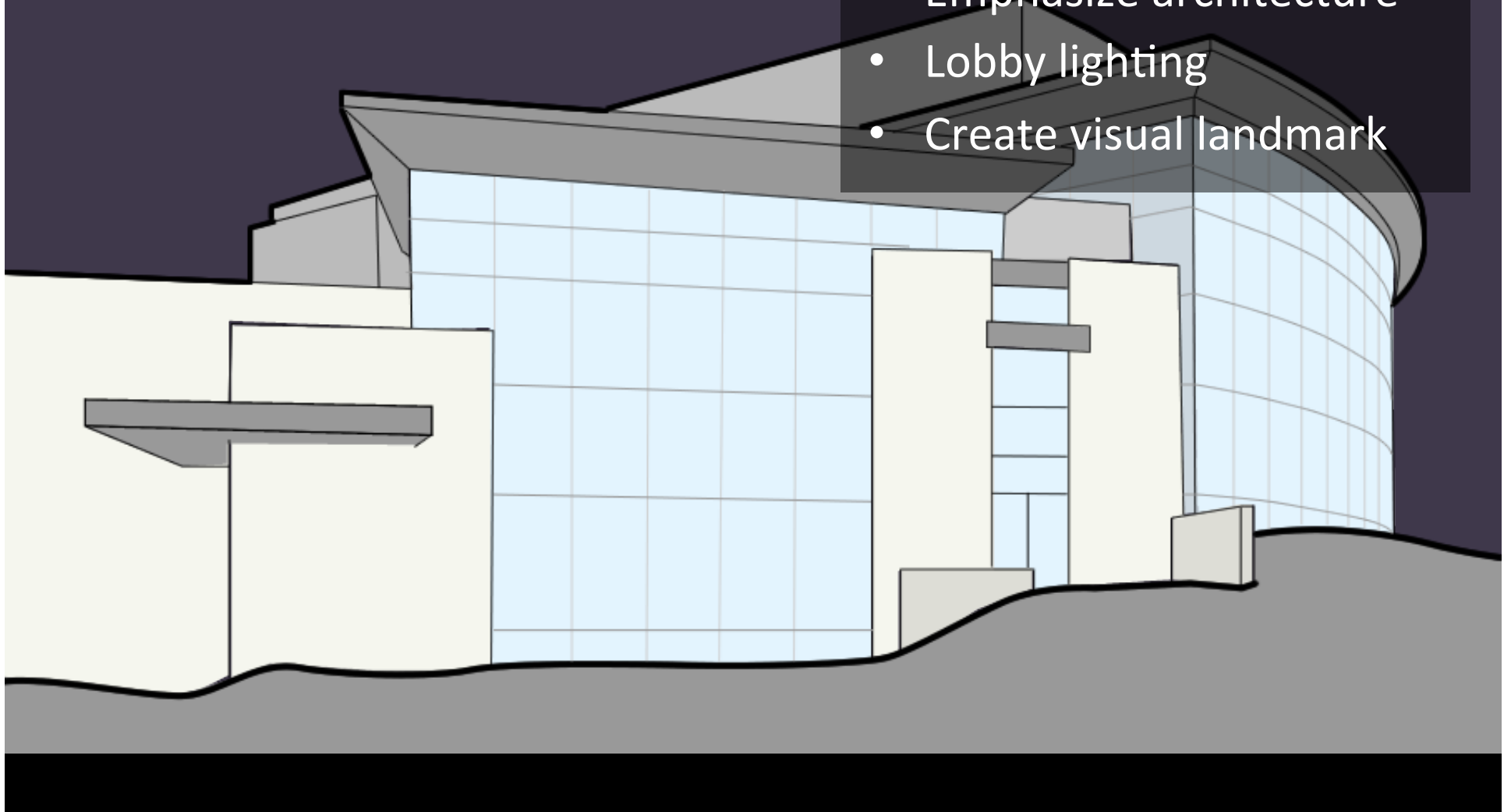
Facade

- Highlight entrances
- Highlight architectural features
- Lobby lighting
- Visual landmark
- Minimize light pollution

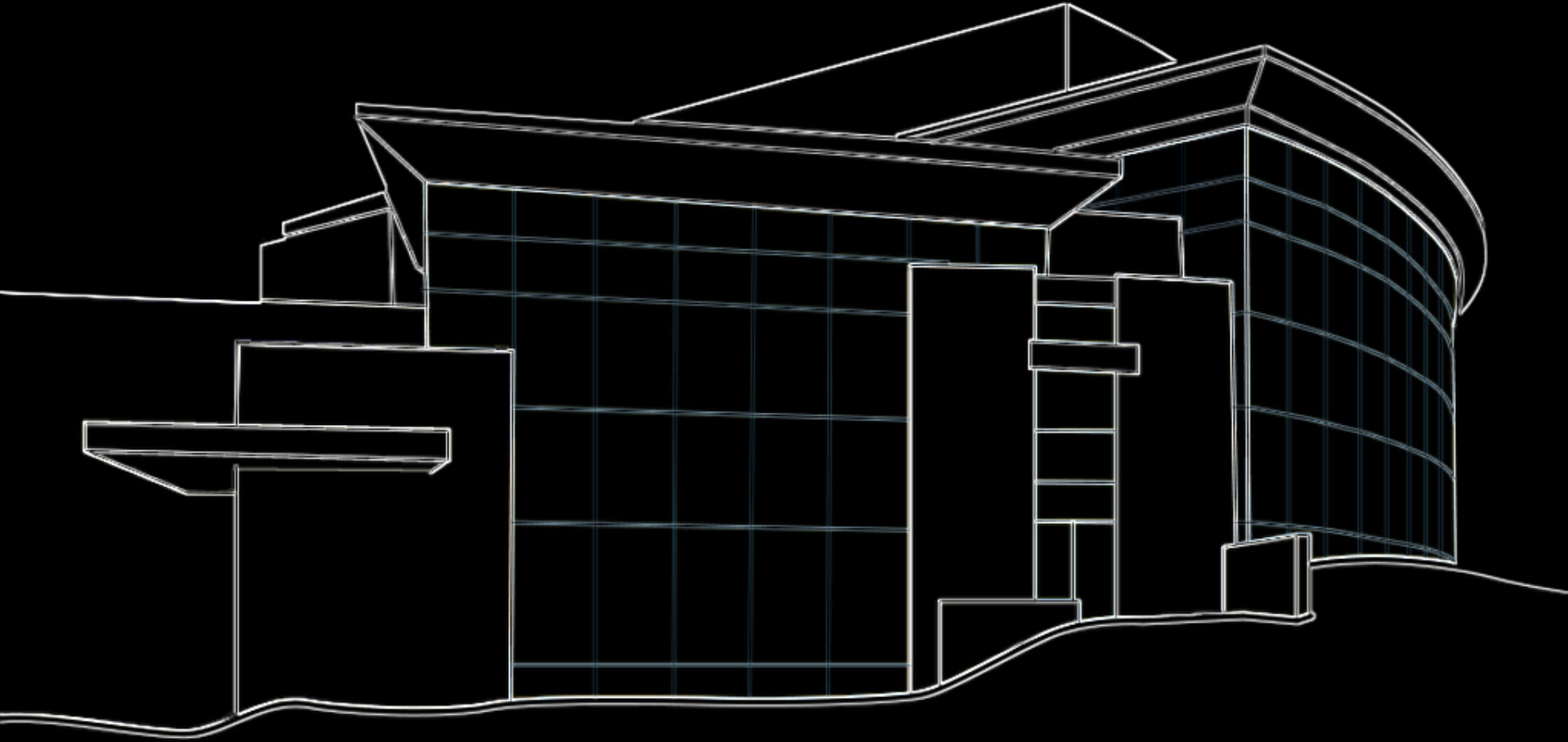
Facade

Lighting Considerations

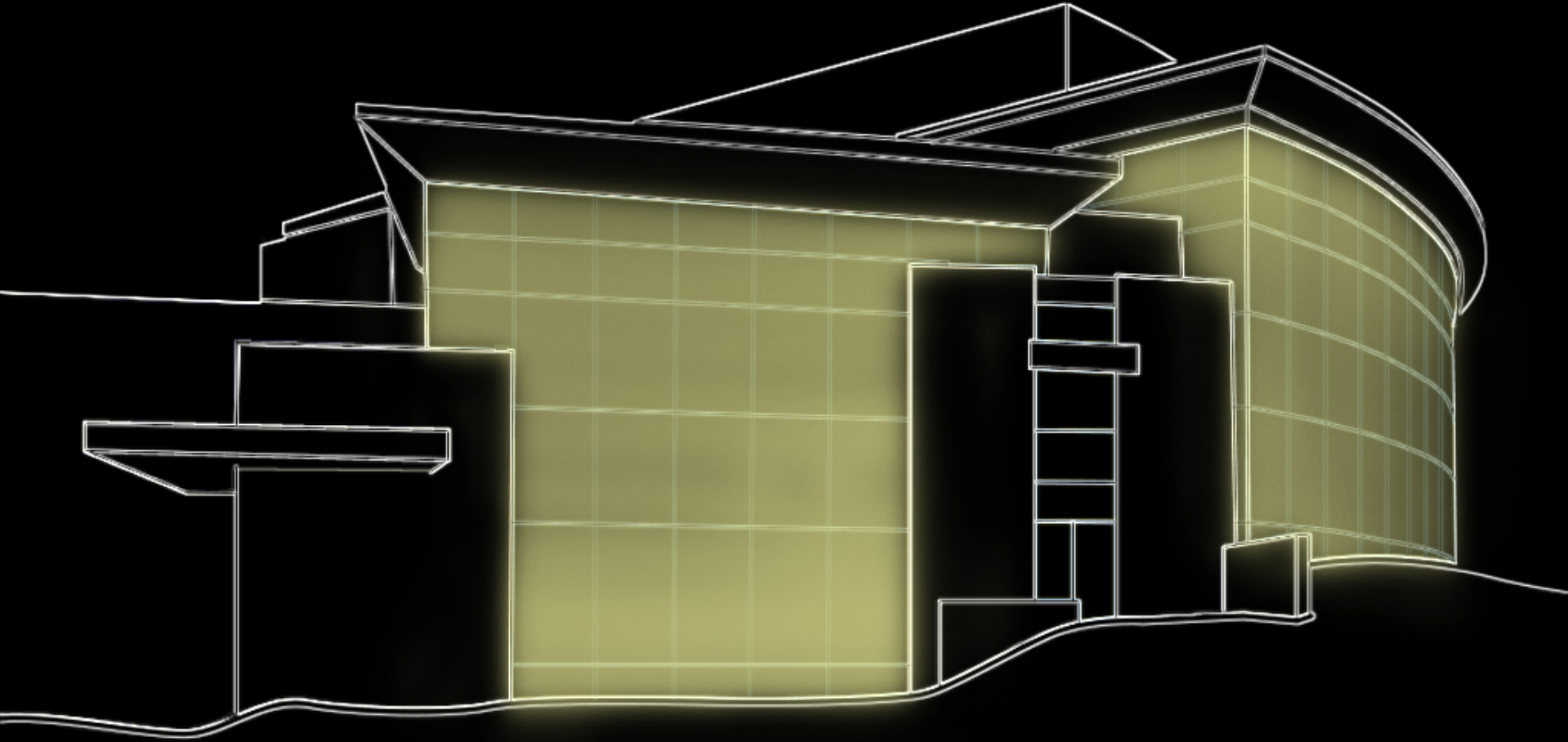
- Highlight entrances
- Emphasize architecture
- Lobby lighting
- Create visual landmark



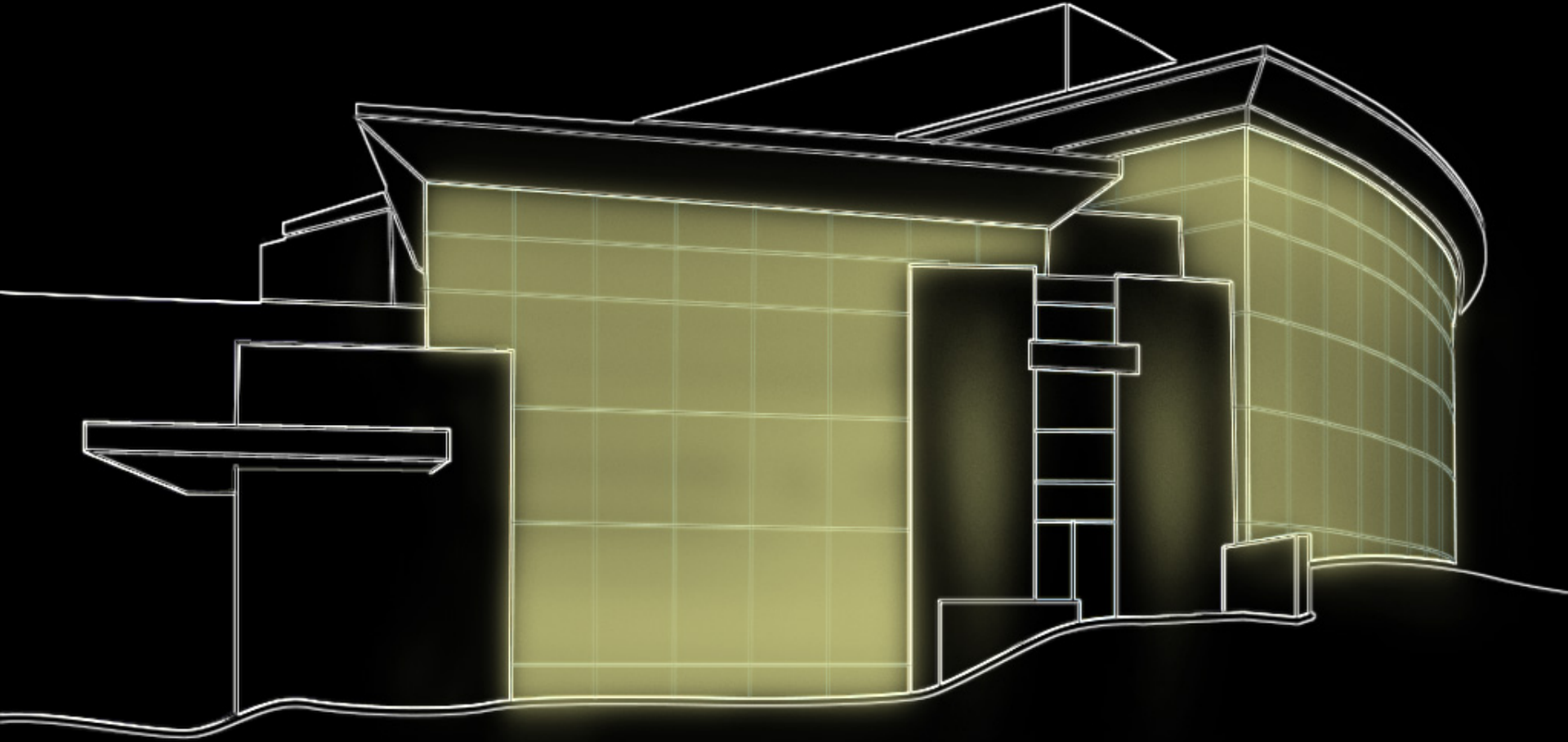
Facade



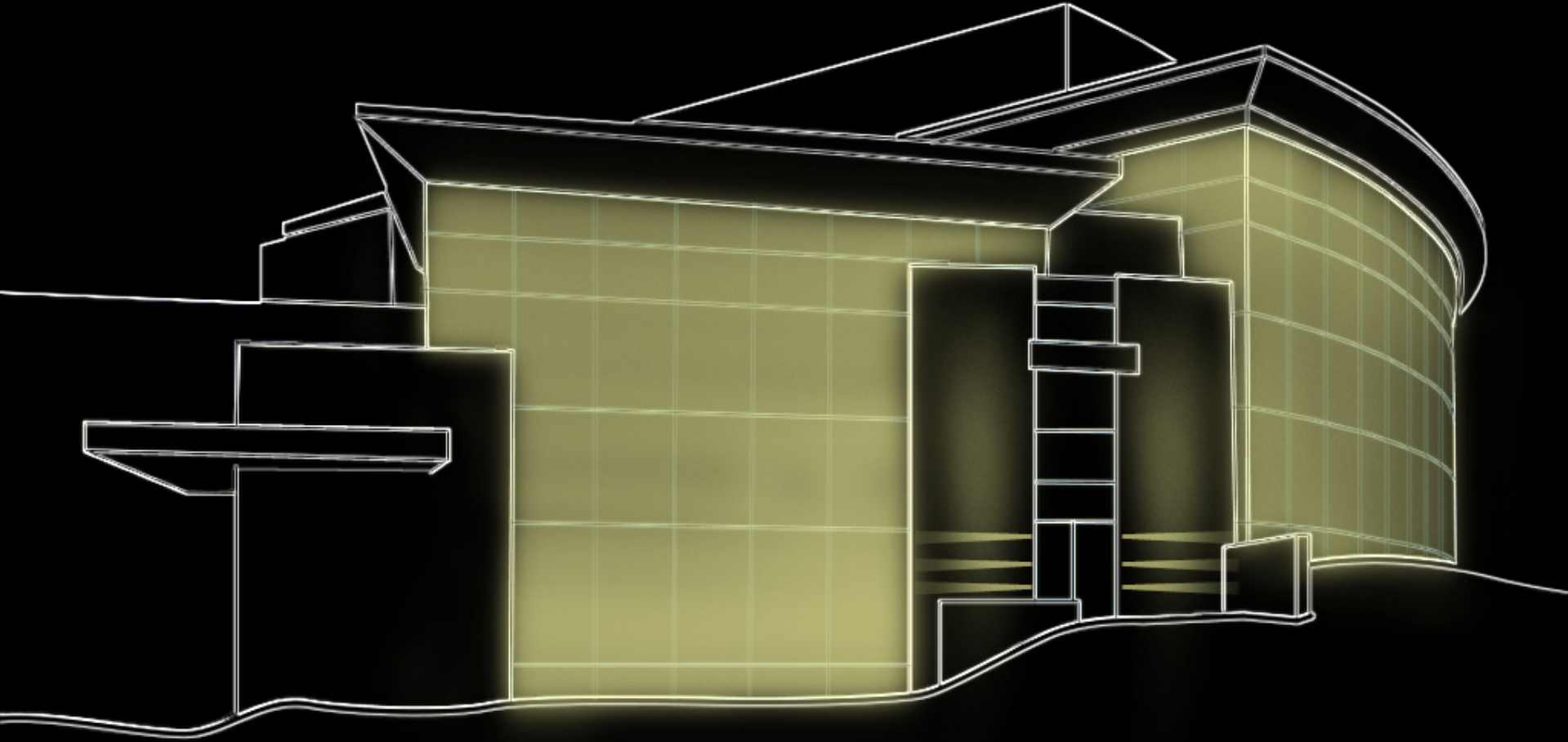
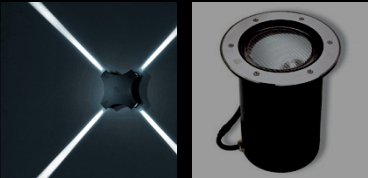
Facade



Facade



Facade



Main Lobby

Lighting Considerations

- Appearance of Space
 - Warm and welcoming
- Transitional area
 - Adjustable light level
 - No direct glare
- Direct traffic flow
- Acoustically sensitive



Main Lobby



Main Lobby



Main Lobby



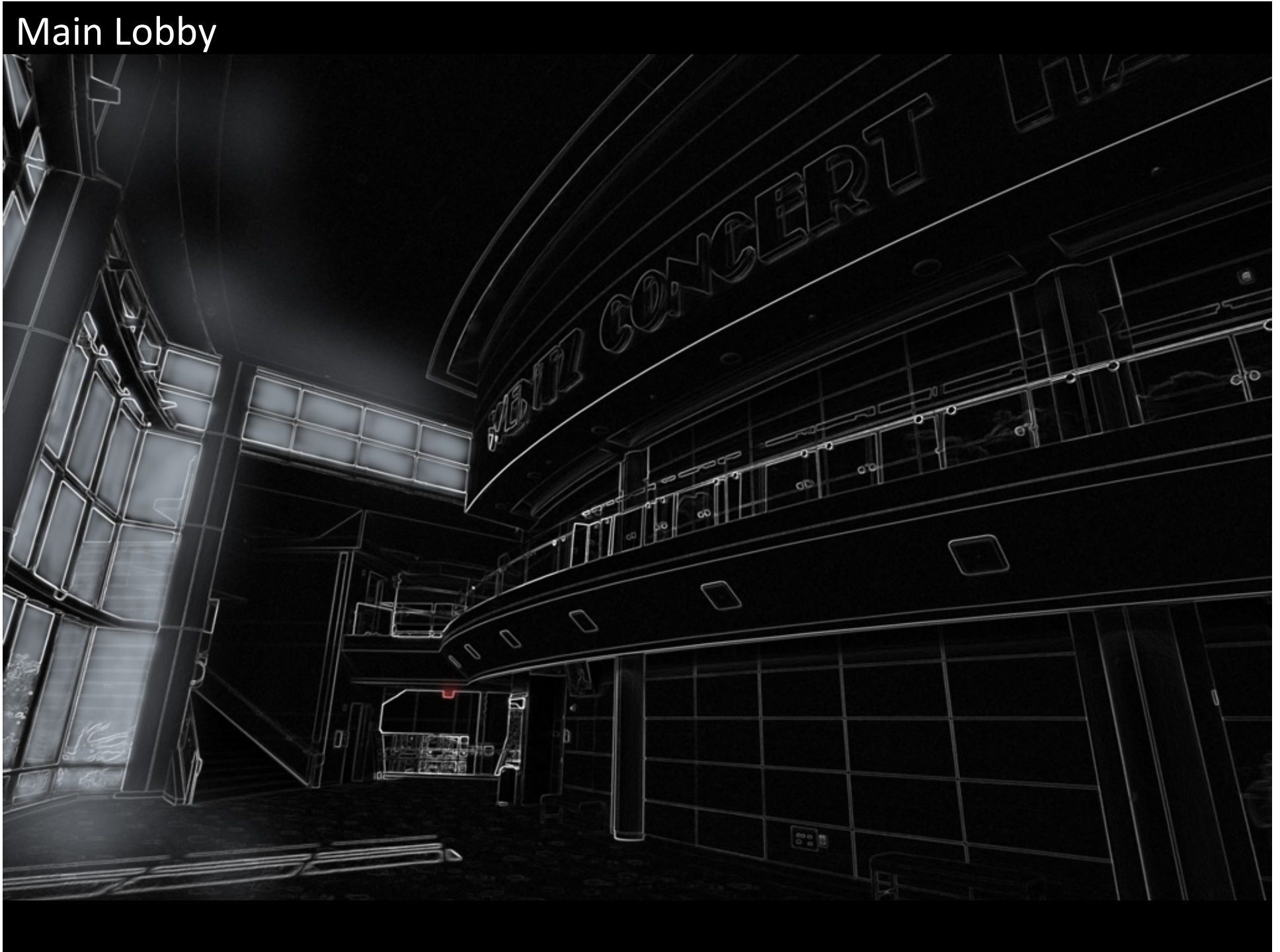
Main Lobby



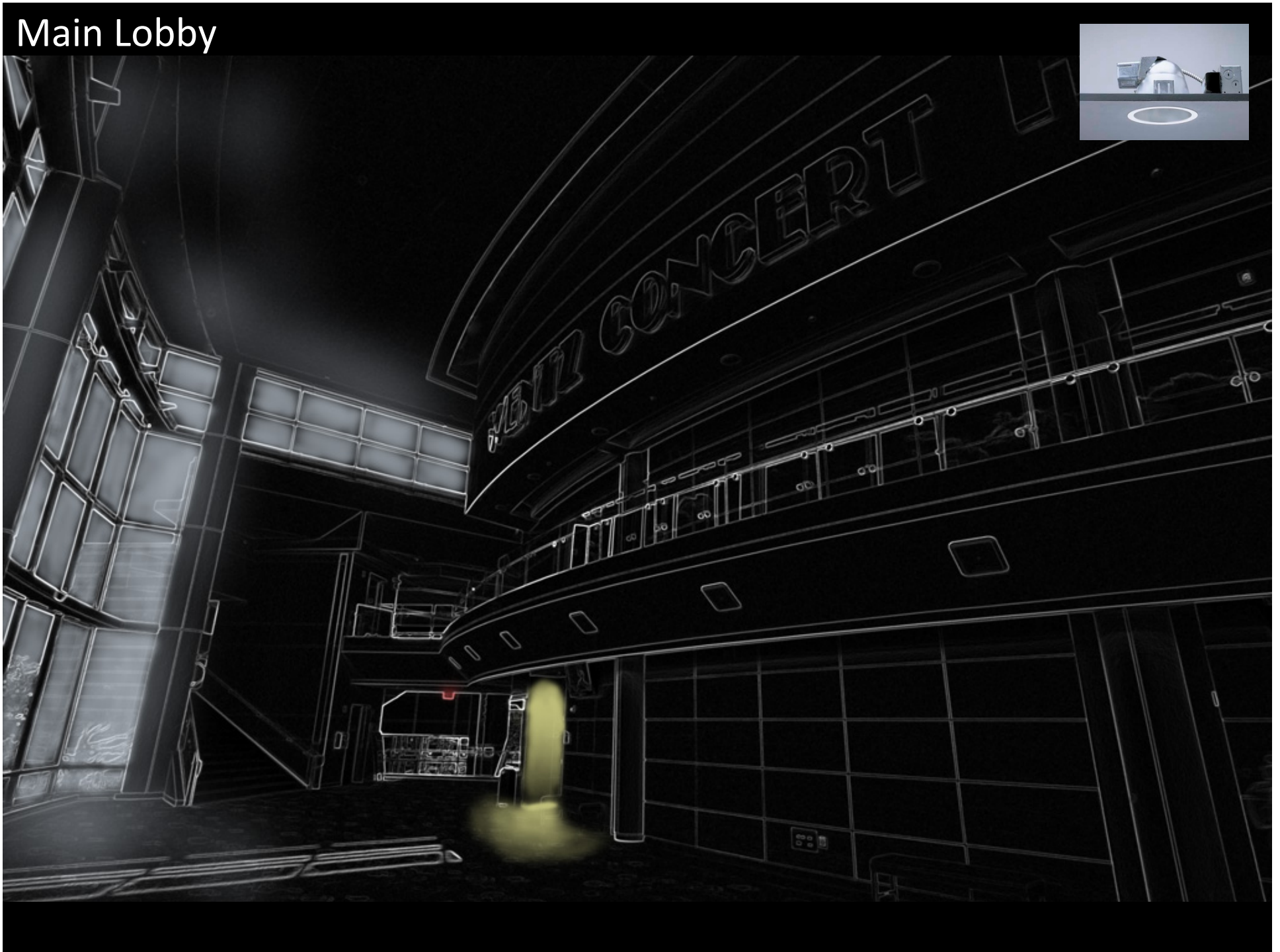
Main Lobby



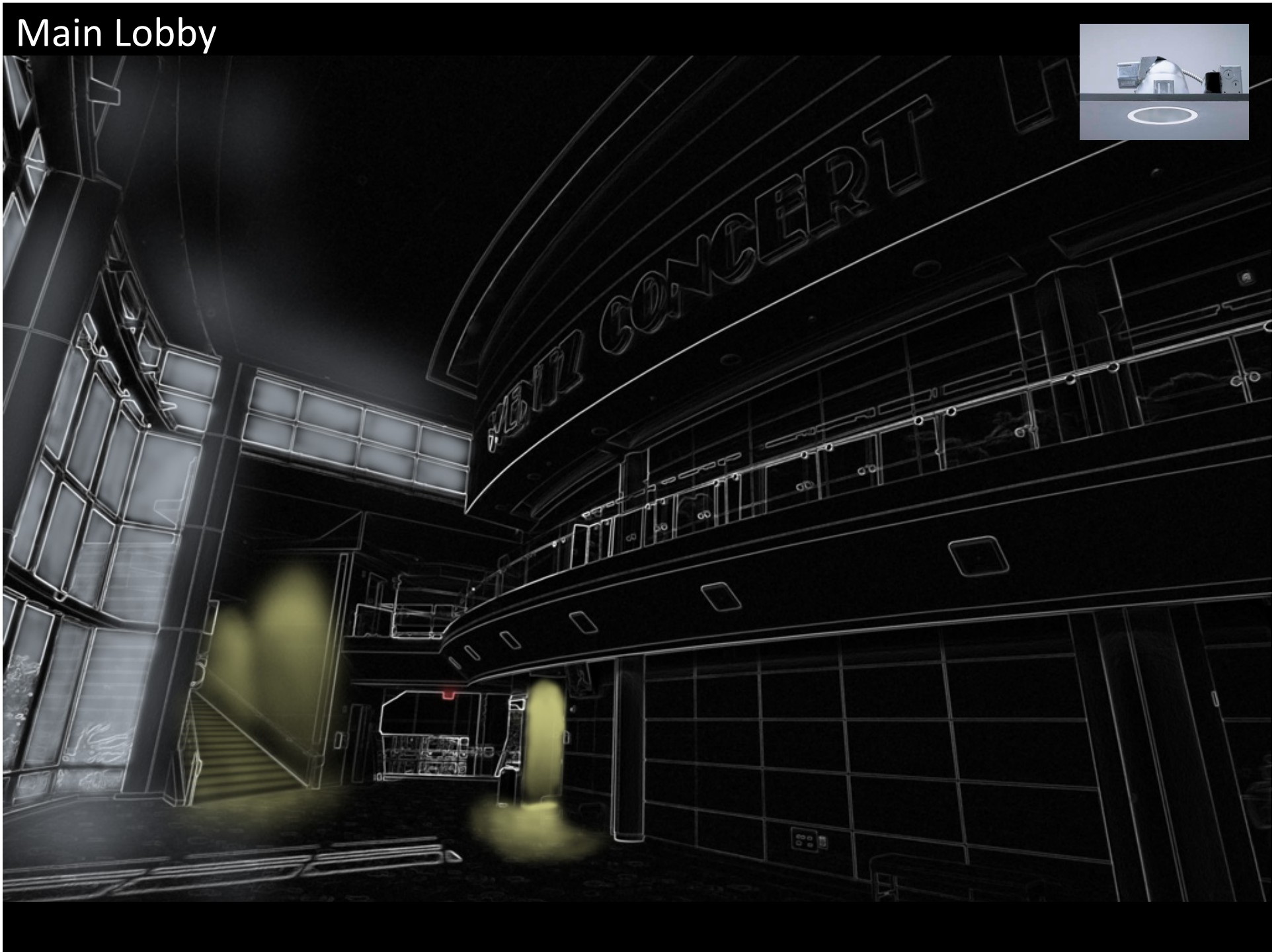
Main Lobby



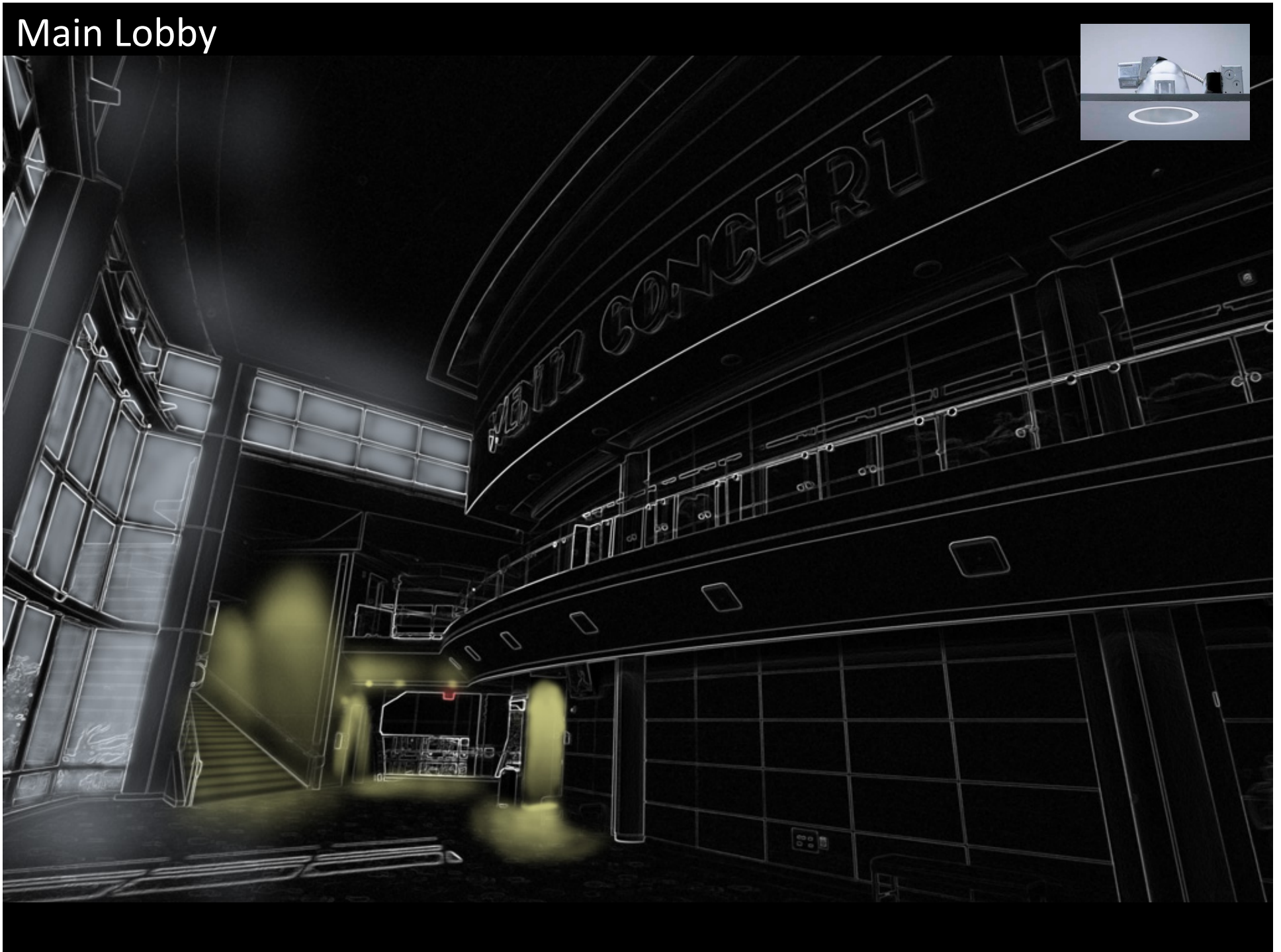
Main Lobby



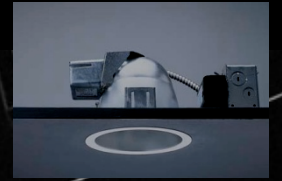
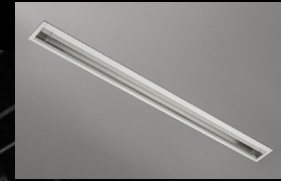
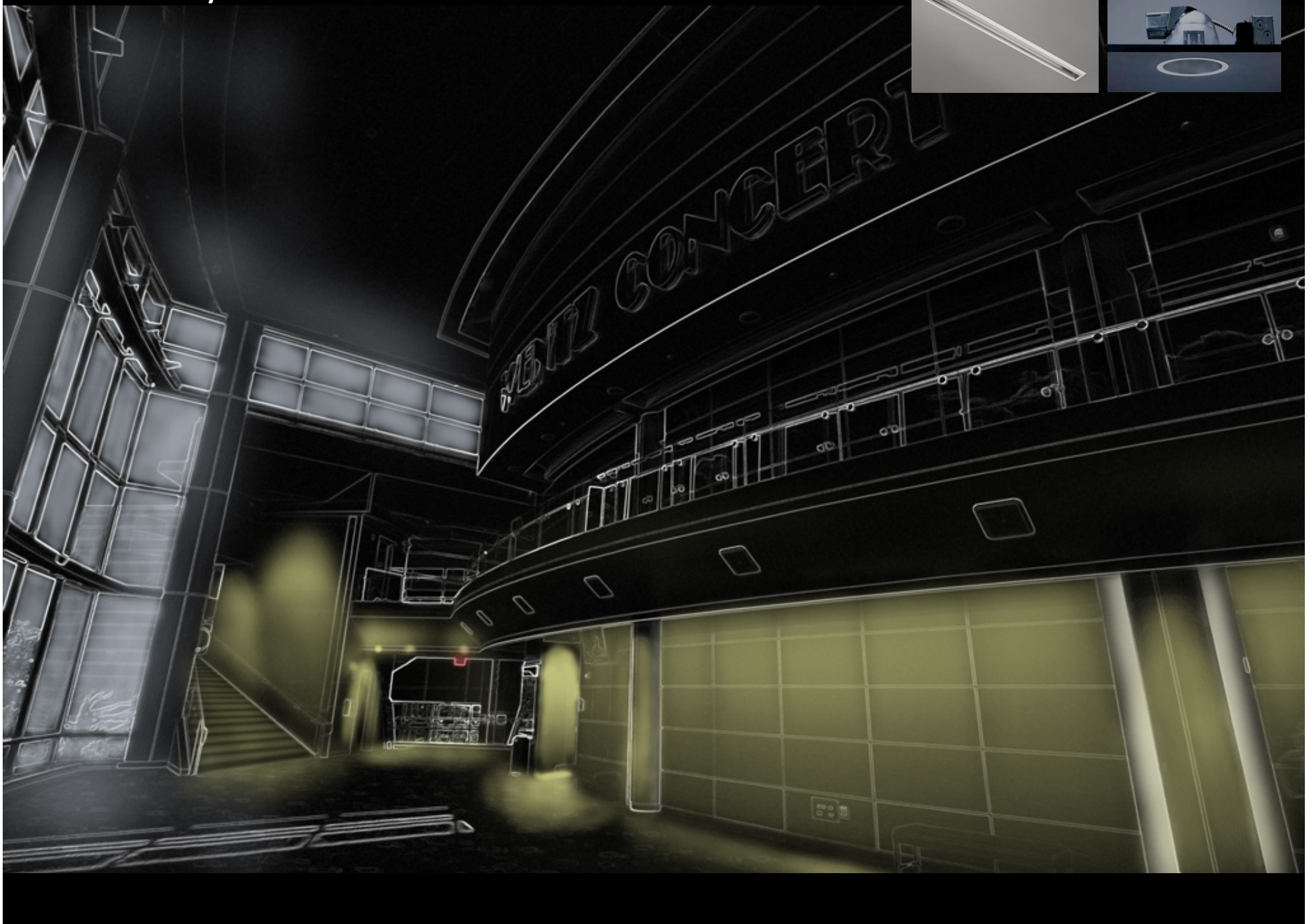
Main Lobby



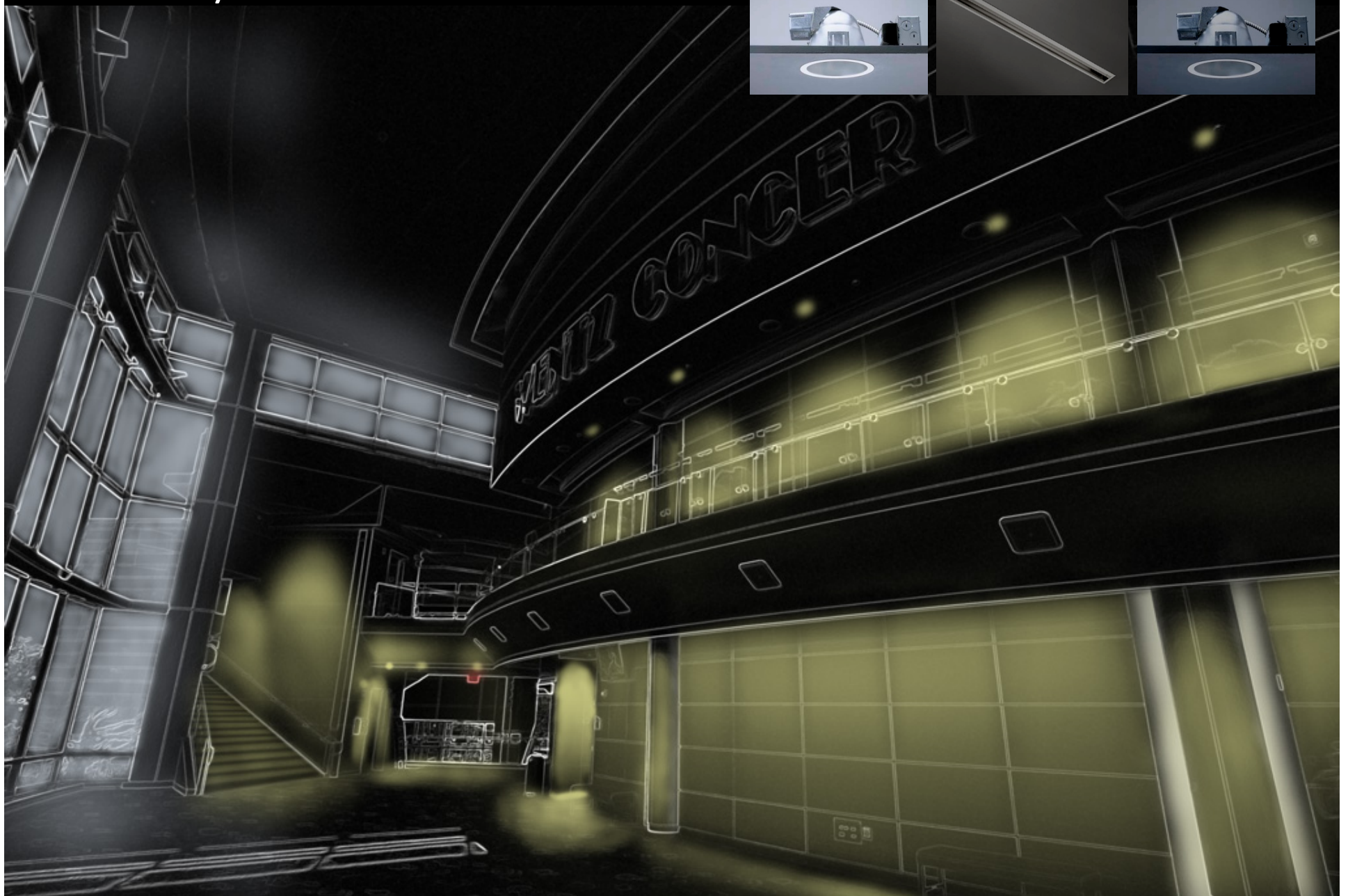
Main Lobby



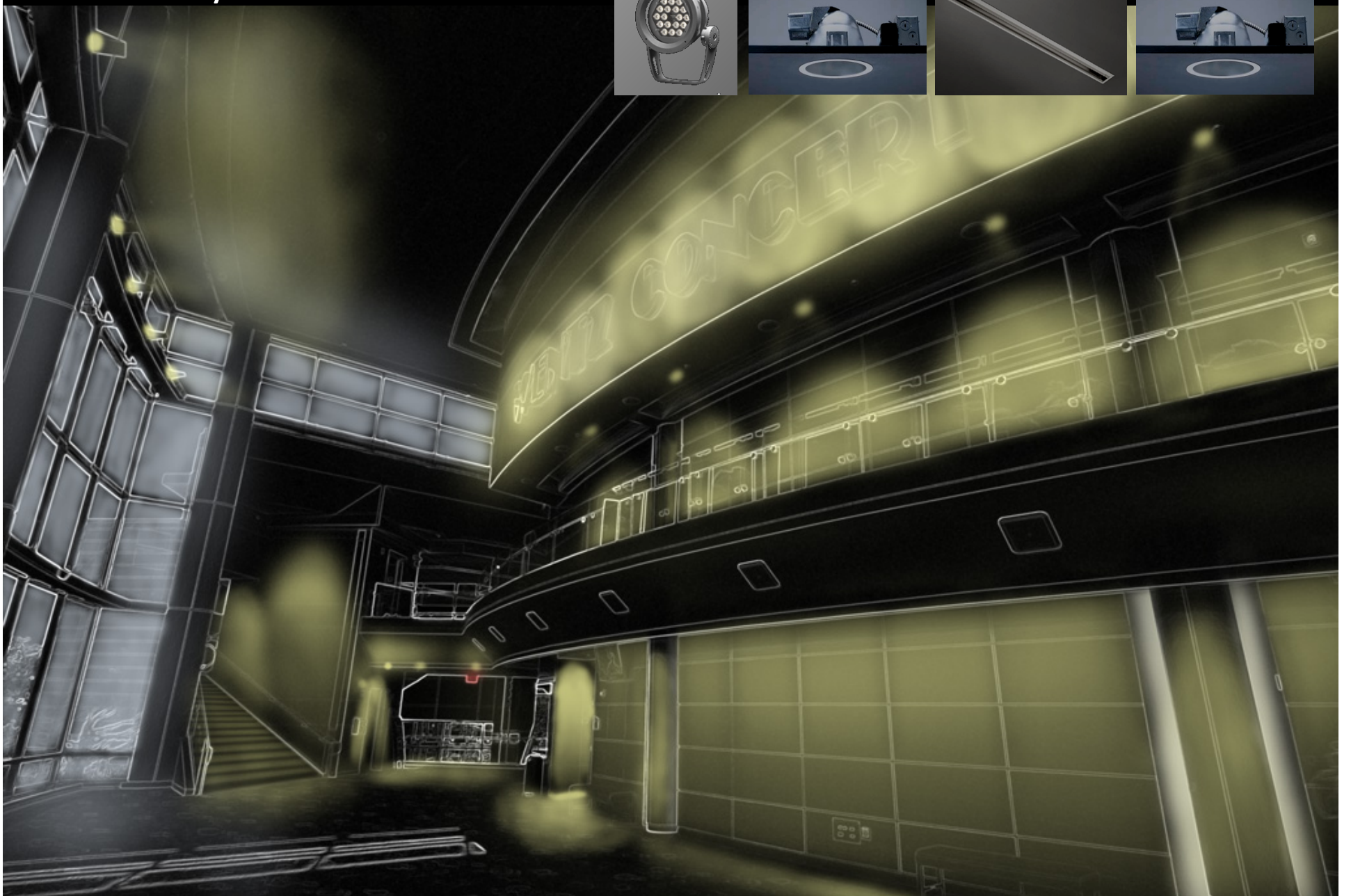
Main Lobby



Main Lobby



Main Lobby



Concert Hall

Lighting Considerations

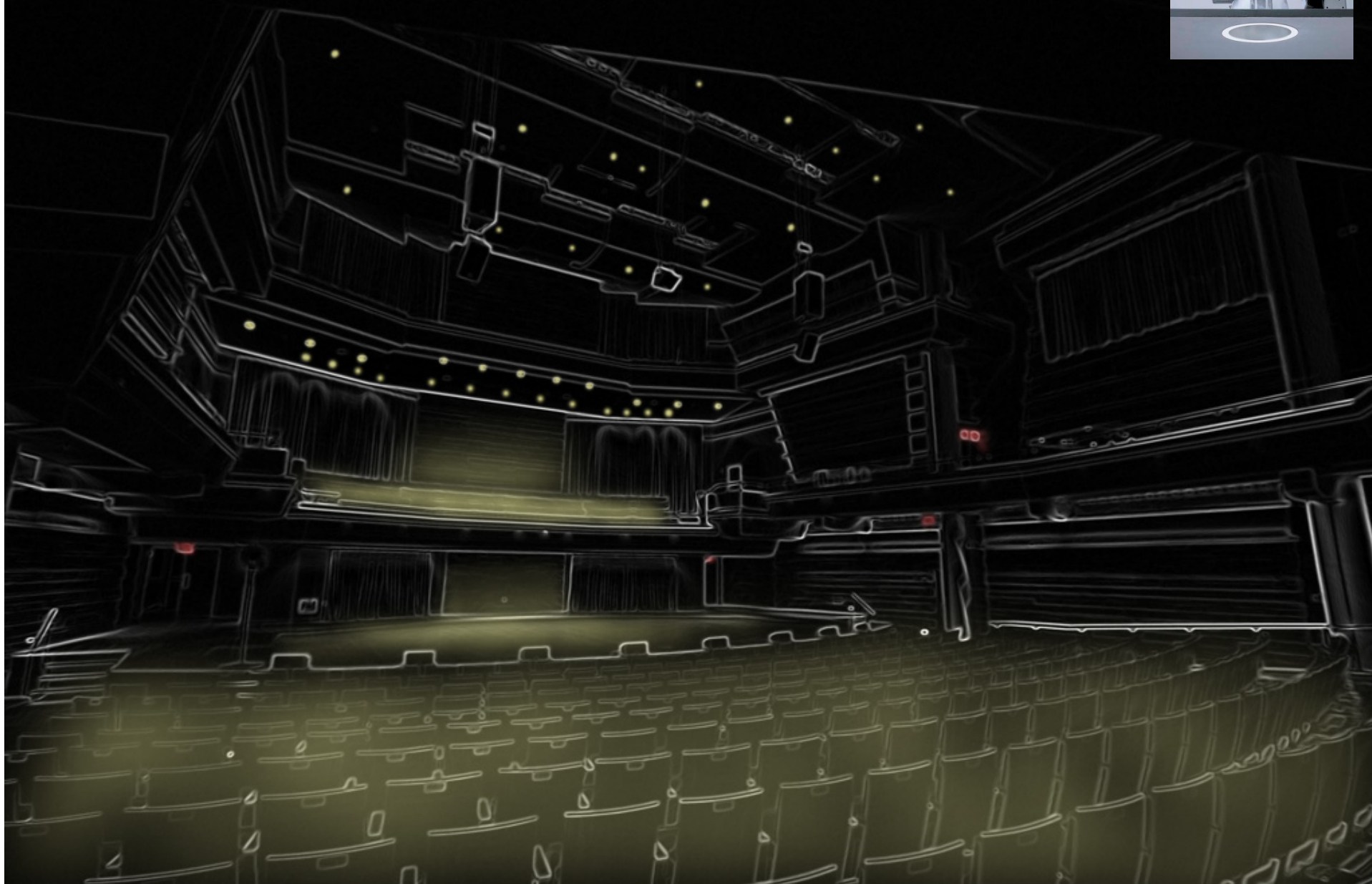
- Appearance of Space
 - Impression of relaxation
- Color rendition
- Controls and dimming
- Safety
- Acoustically sensitive



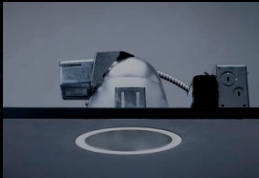
Concert Hall – Scheme 1



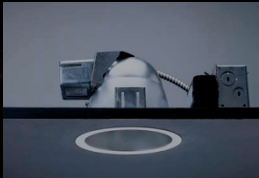
Concert Hall – Scheme 1



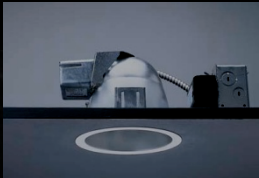
Concert Hall – Scheme 1



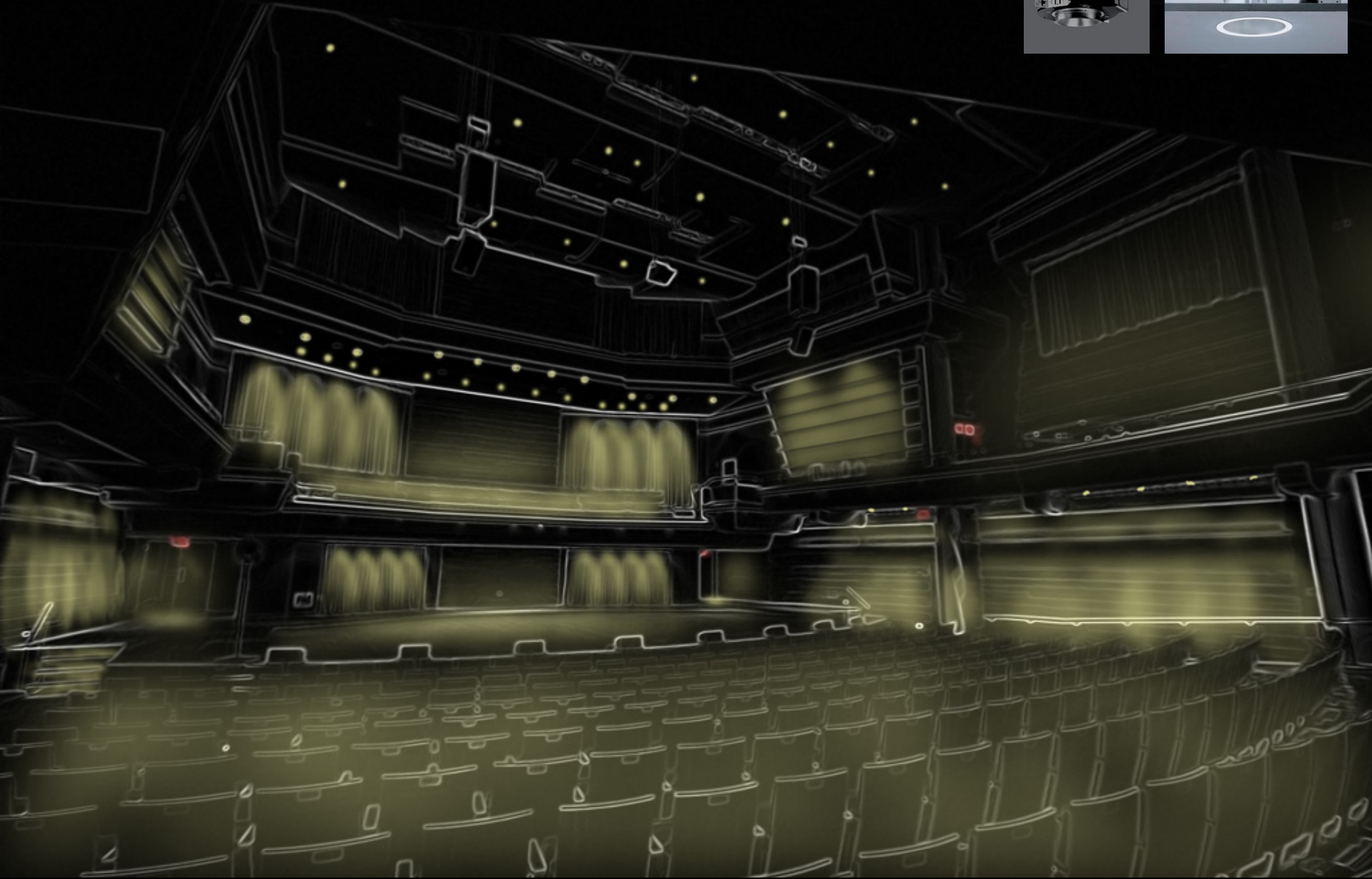
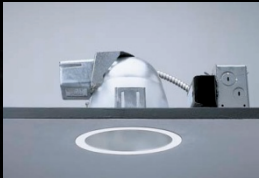
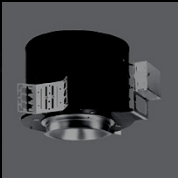
Concert Hall – Scheme 1



Concert Hall – Scheme 1



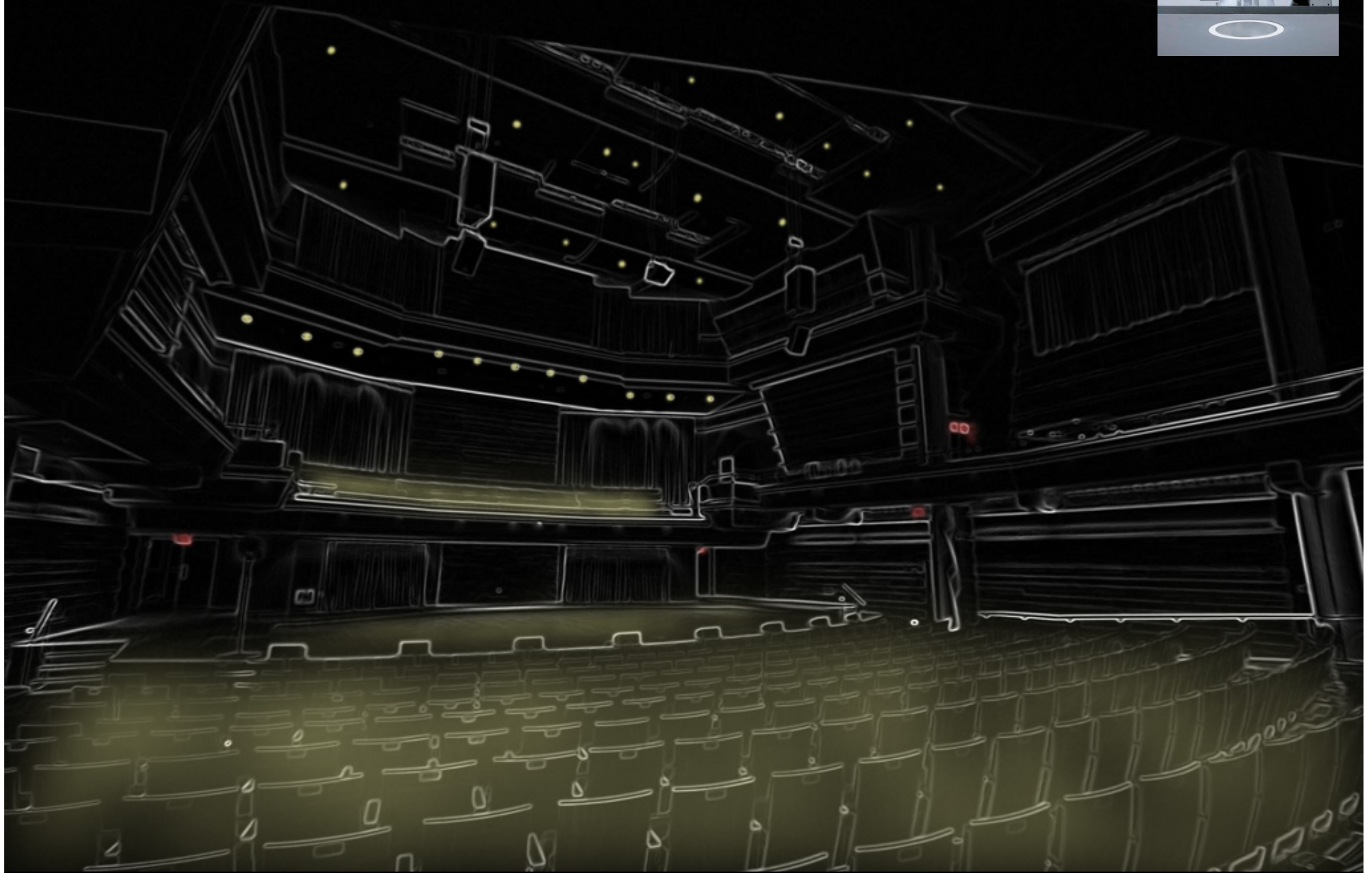
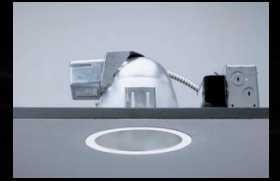
Concert Hall – Scheme 1



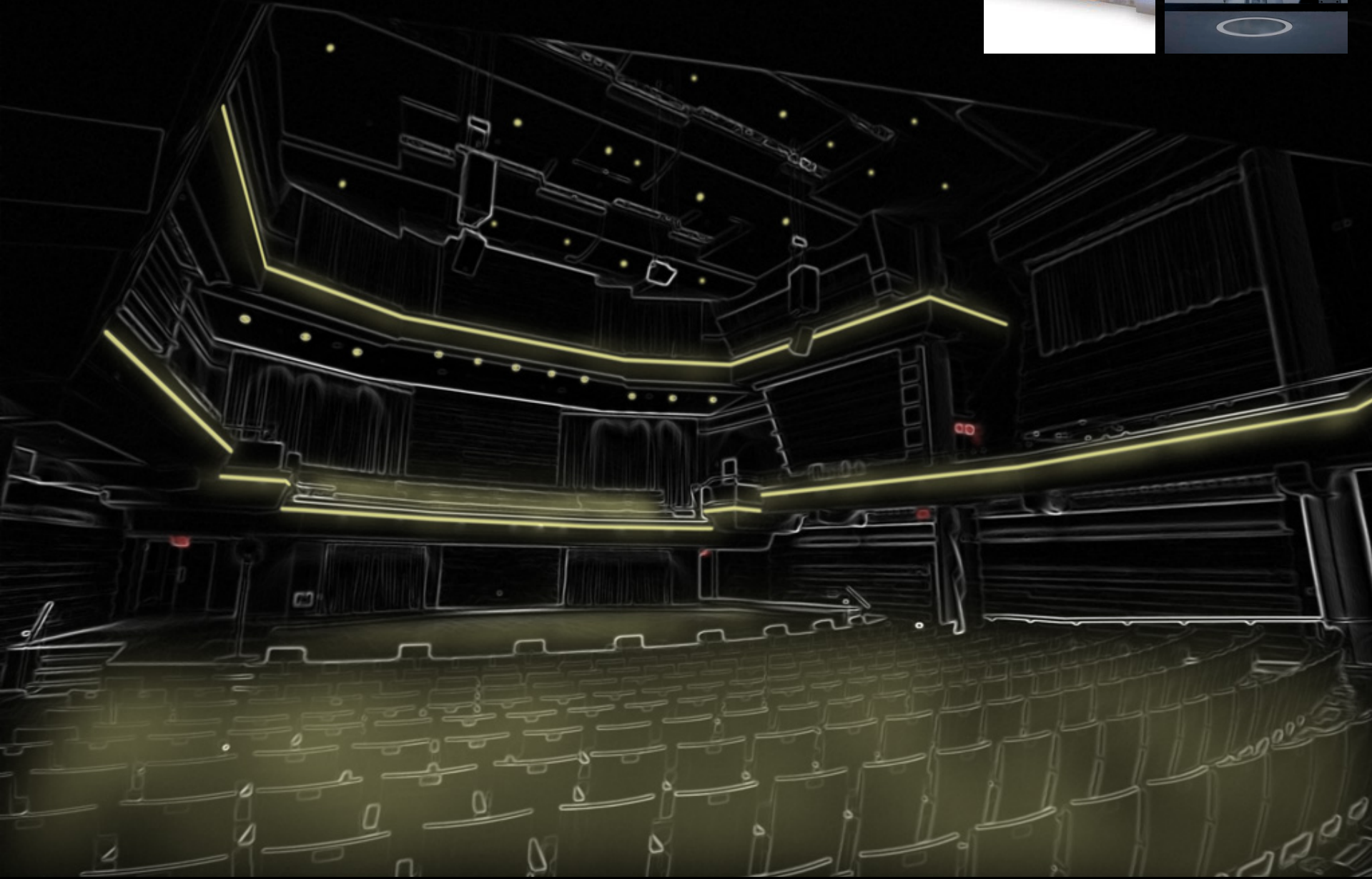
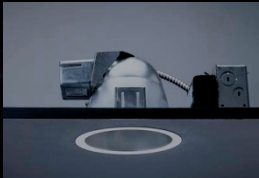
Concert Hall – Scheme 2



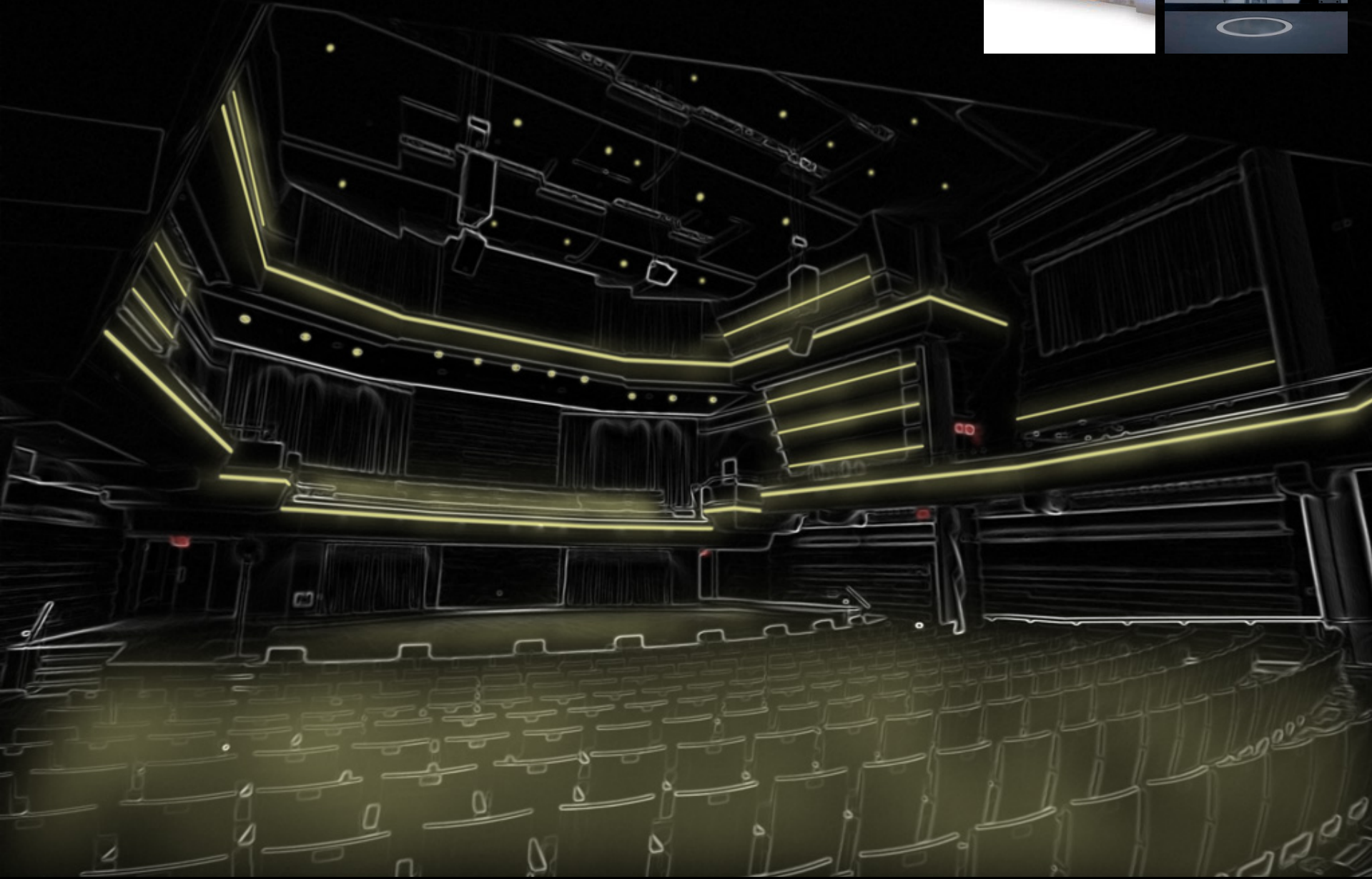
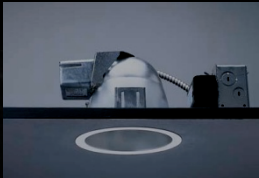
Concert Hall – Scheme 2



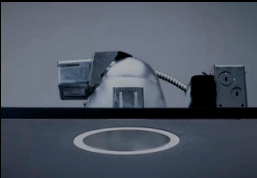
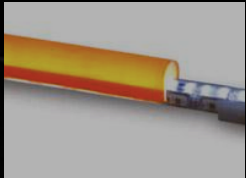
Concert Hall – Scheme 2



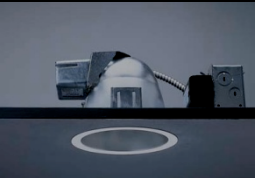
Concert Hall – Scheme 2



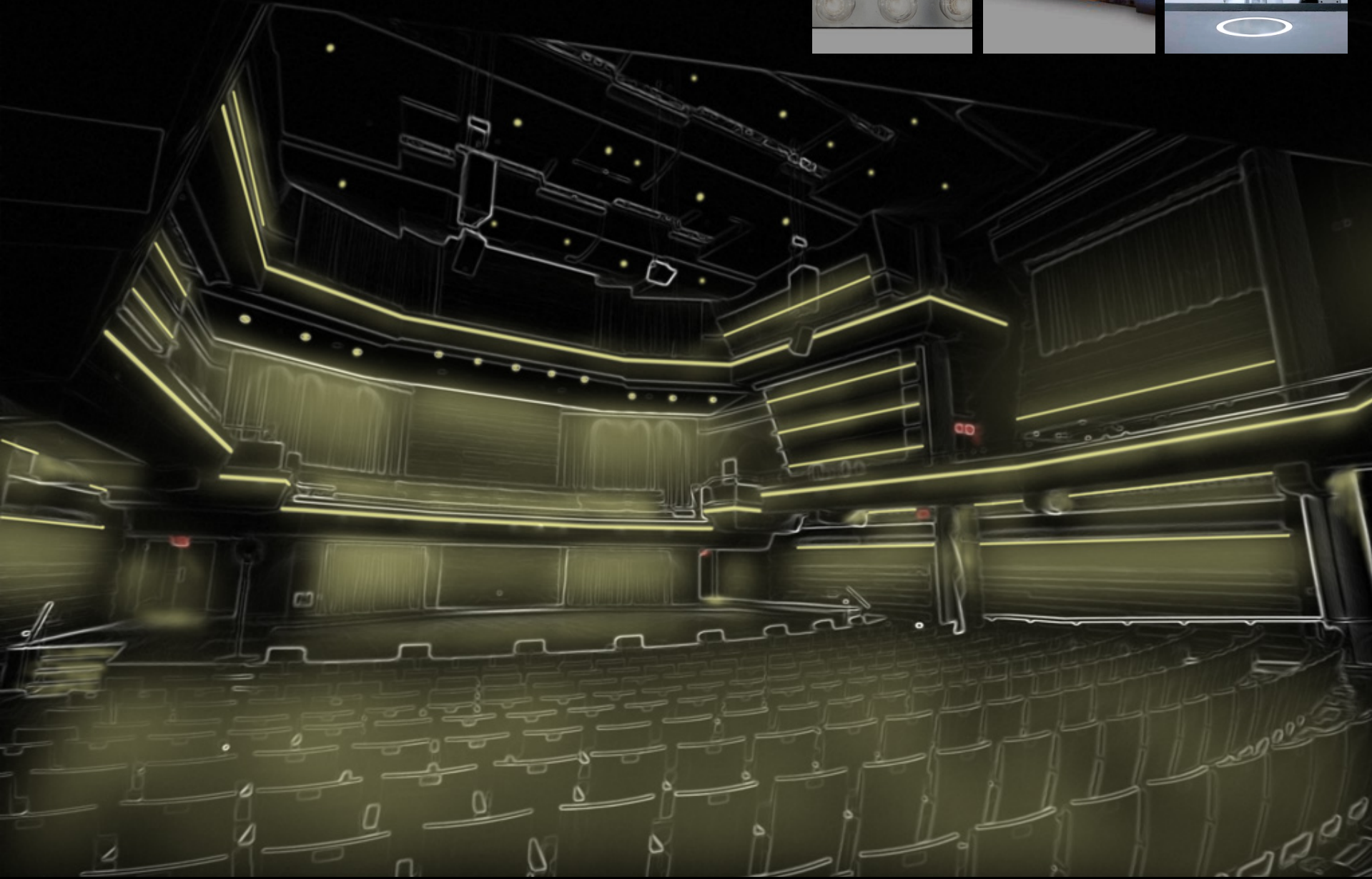
Concert Hall – Scheme 2



Concert Hall – Scheme 2



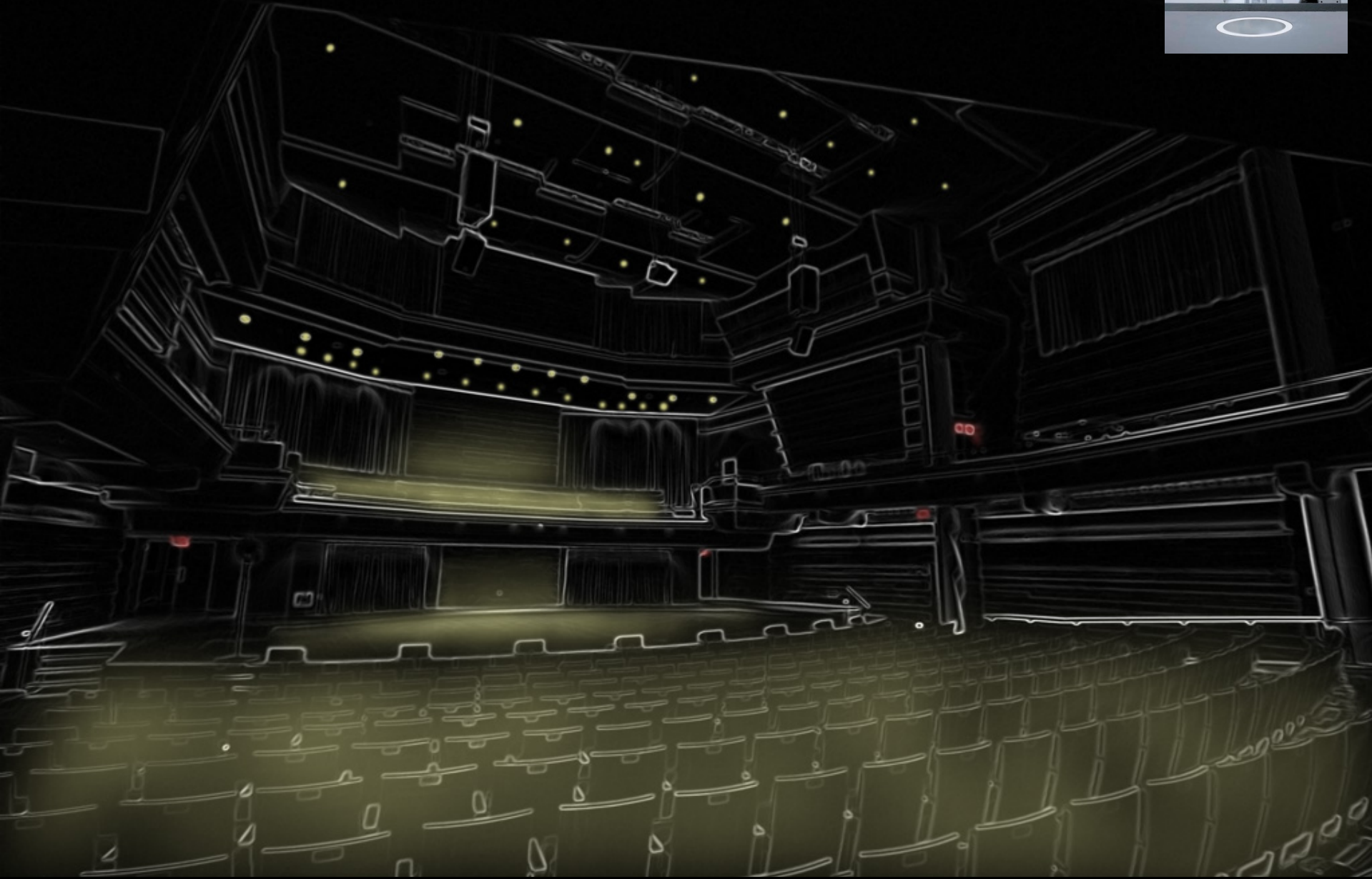
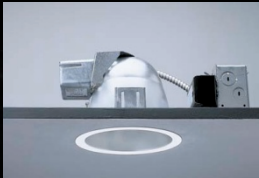
Concert Hall – Scheme 2



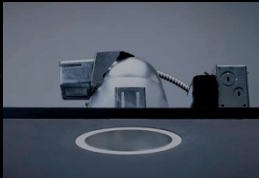
Concert Hall – Scheme 3



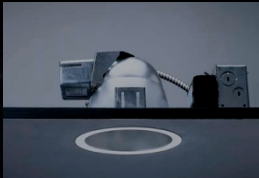
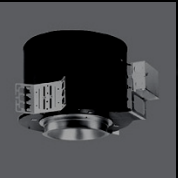
Concert Hall – Scheme 3



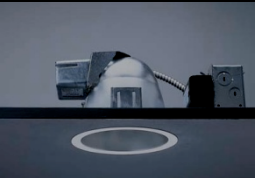
Concert Hall – Scheme 3



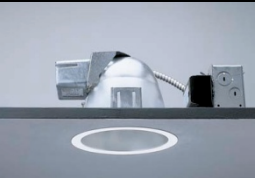
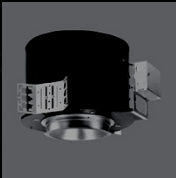
Concert Hall – Scheme 3



Concert Hall – Scheme 3



Concert Hall – Scheme 3



Rehearsal Room

Lighting Considerations

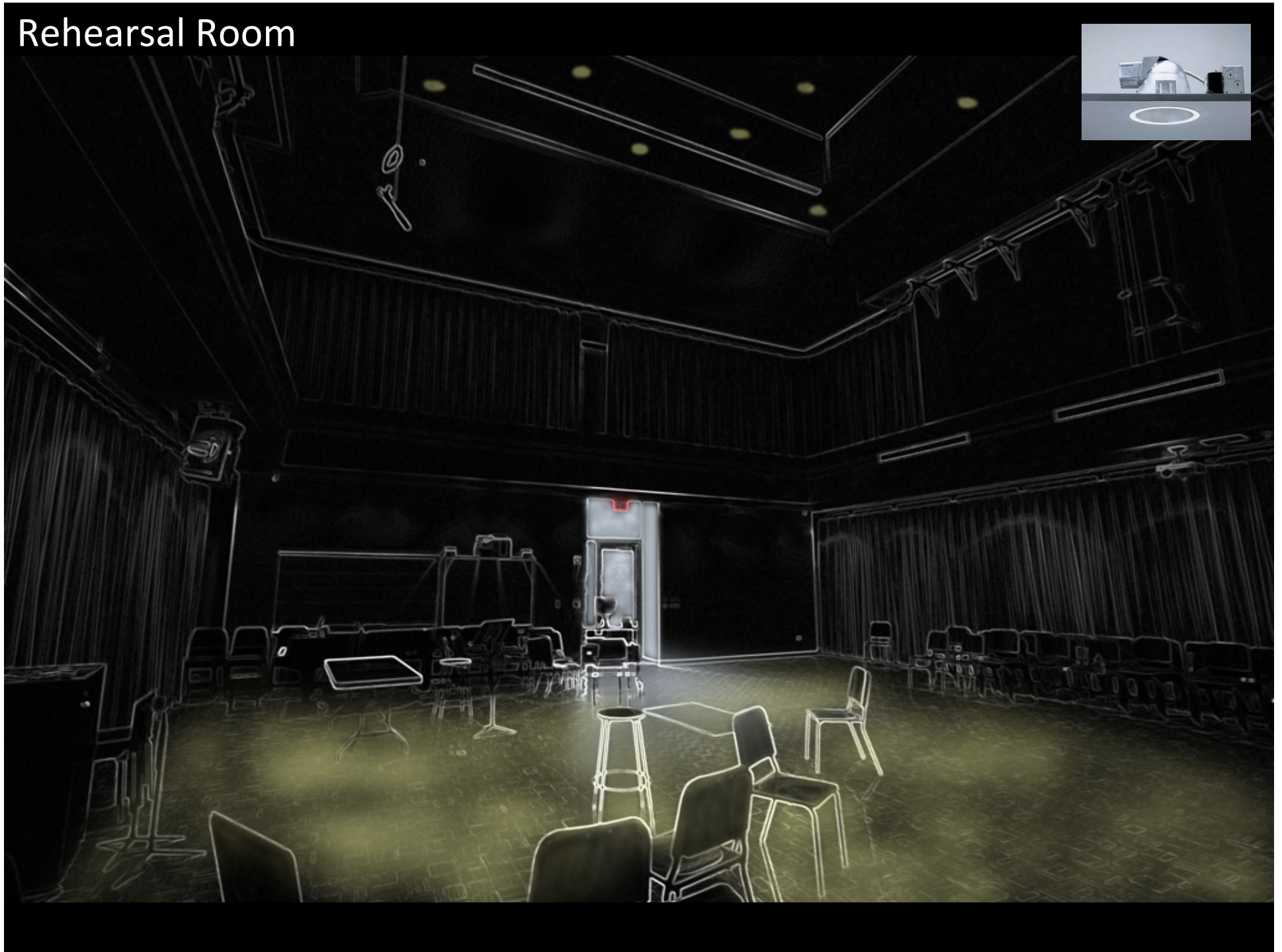
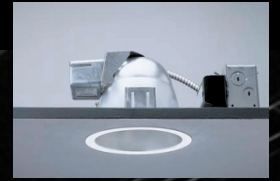
- Music classroom
- Visual appearance
 - Whiteboard
 - Visual acuity
- Avoid glare



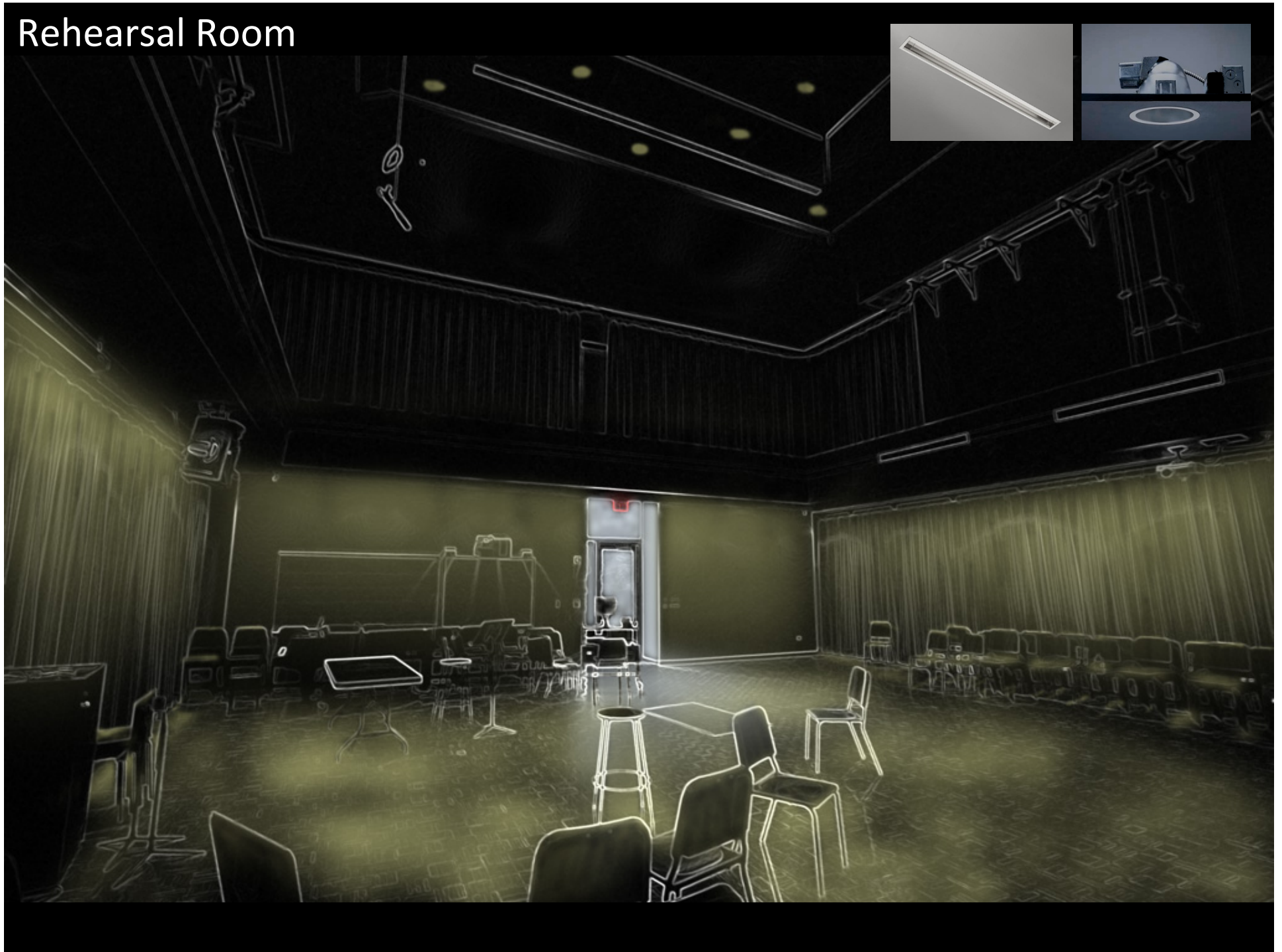
Rehearsal Room



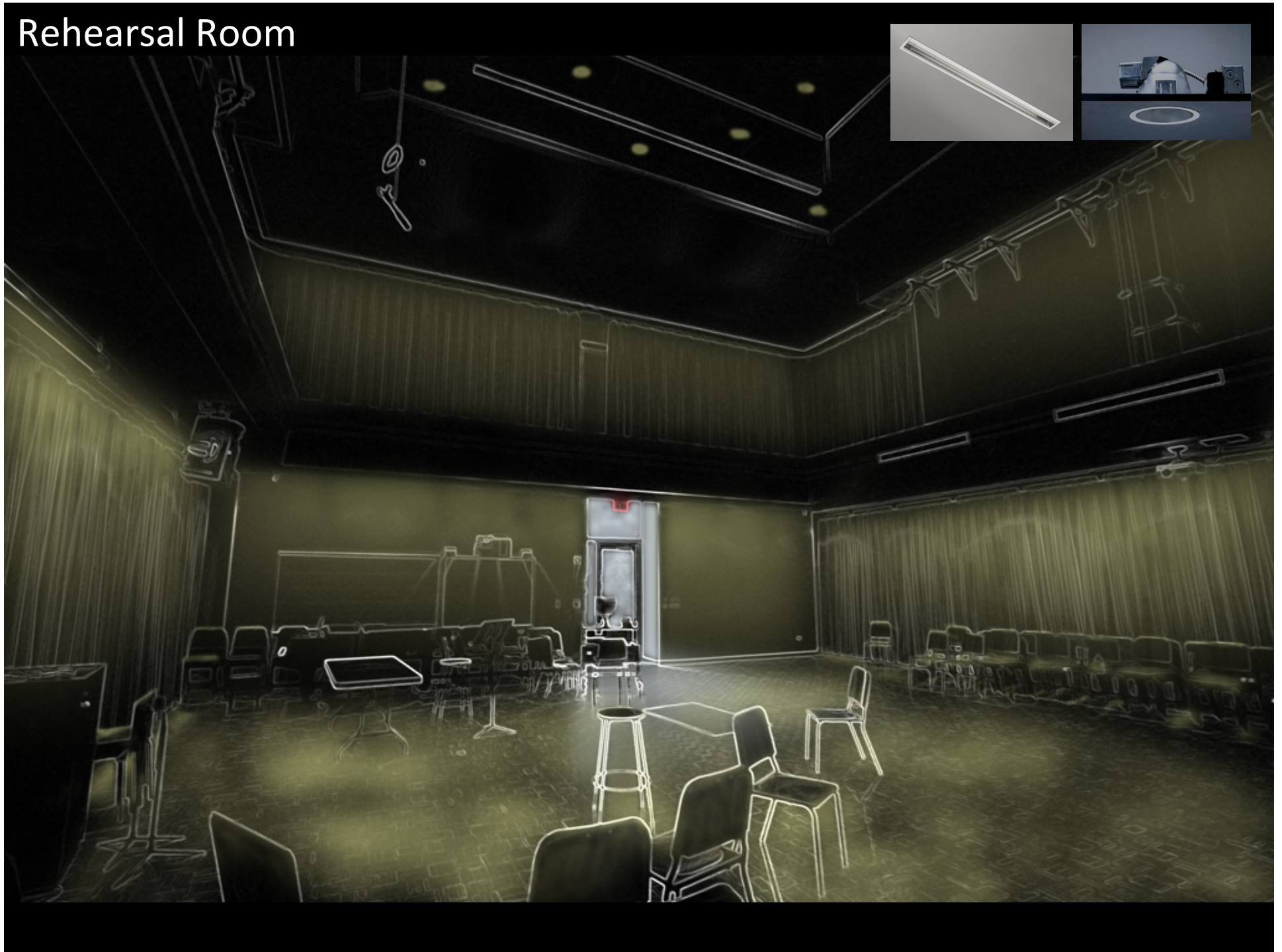
Rehearsal Room



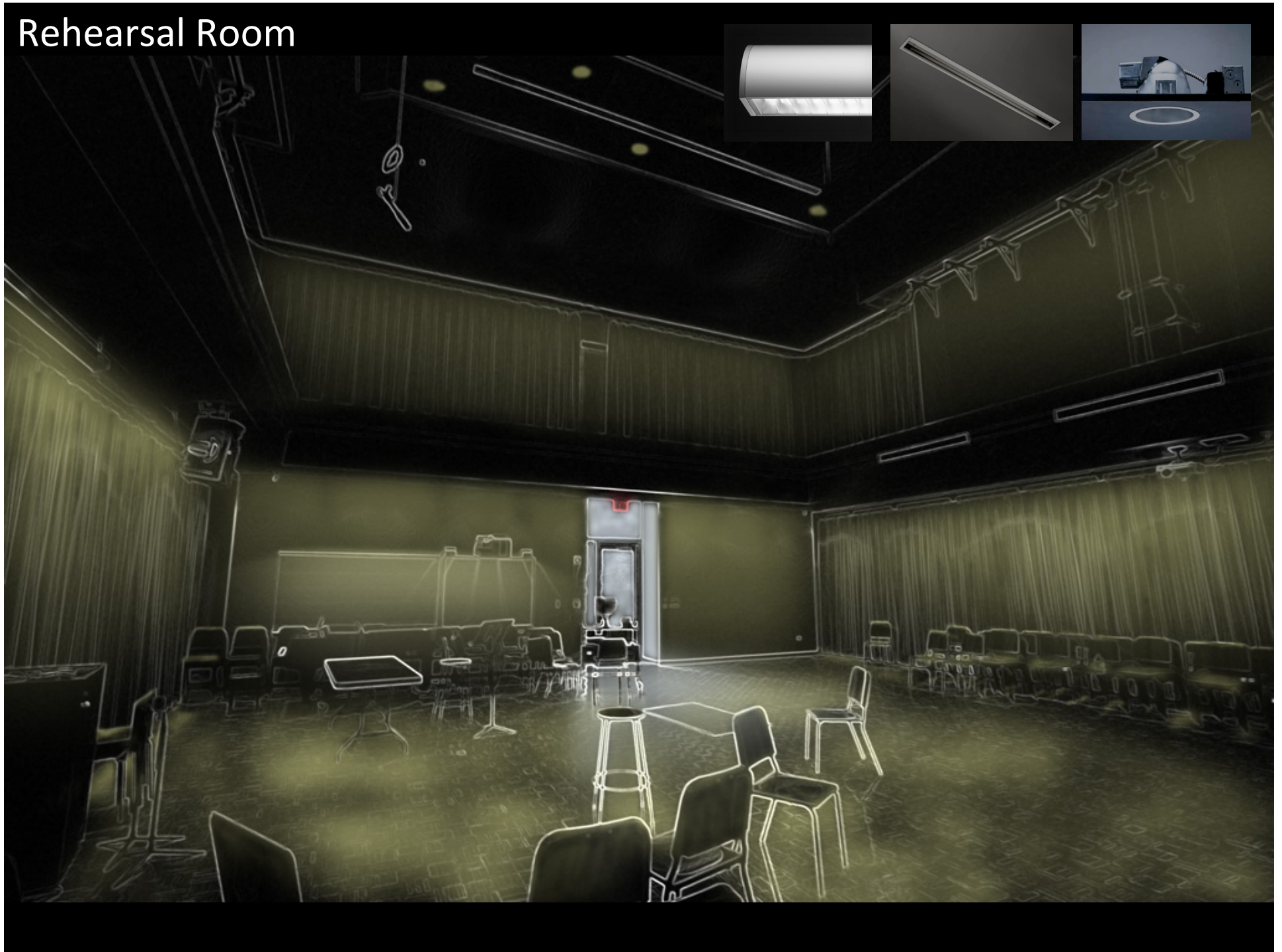
Rehearsal Room

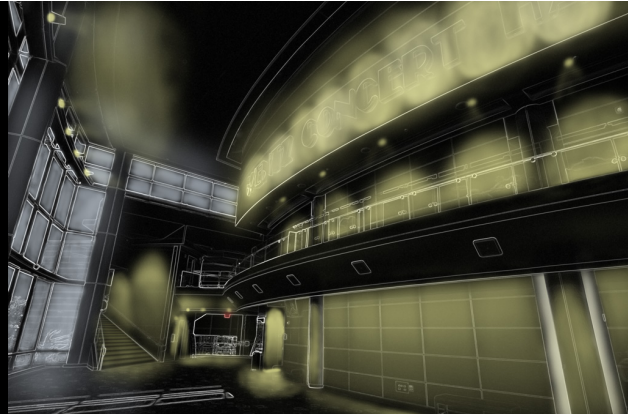
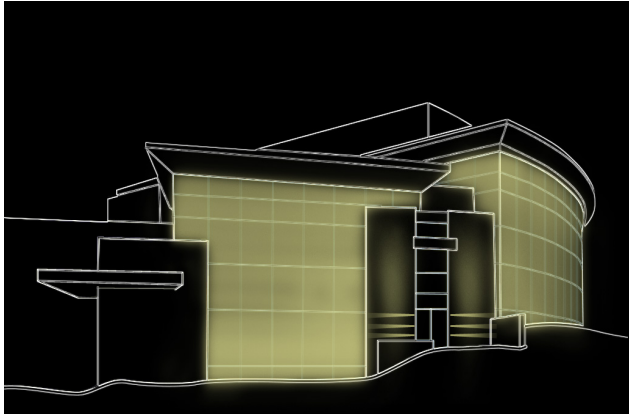


Rehearsal Room



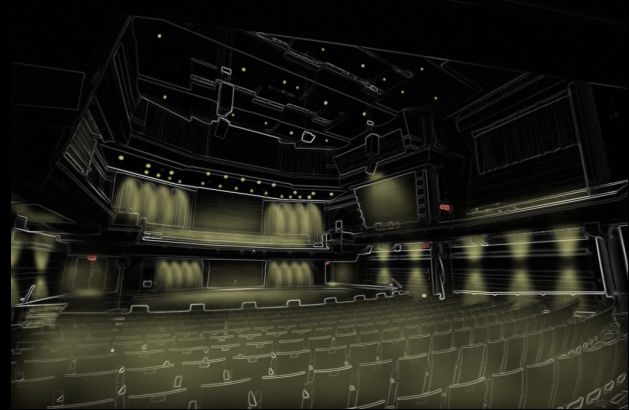
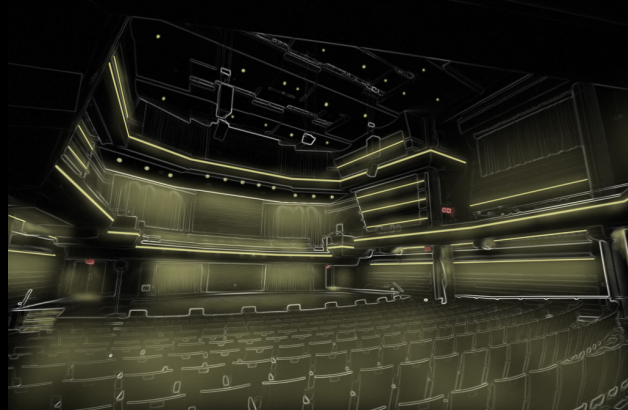
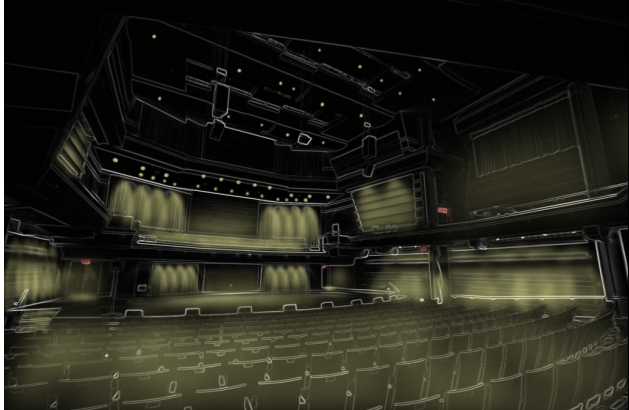
Rehearsal Room





Wentz Concert Hall and Fine Arts Center

- Welcoming to visitors
- Community landmark
- Supports education
- Architectural showcase



Thank you