

| PORTFOLIO |

Rachel Barrow | 2012

Casa Batlló | Barcelona:
Photograph taken in the attic of Gaudi's Casa Batlló to depict the light effects, as well as the overall atmosphere of the space

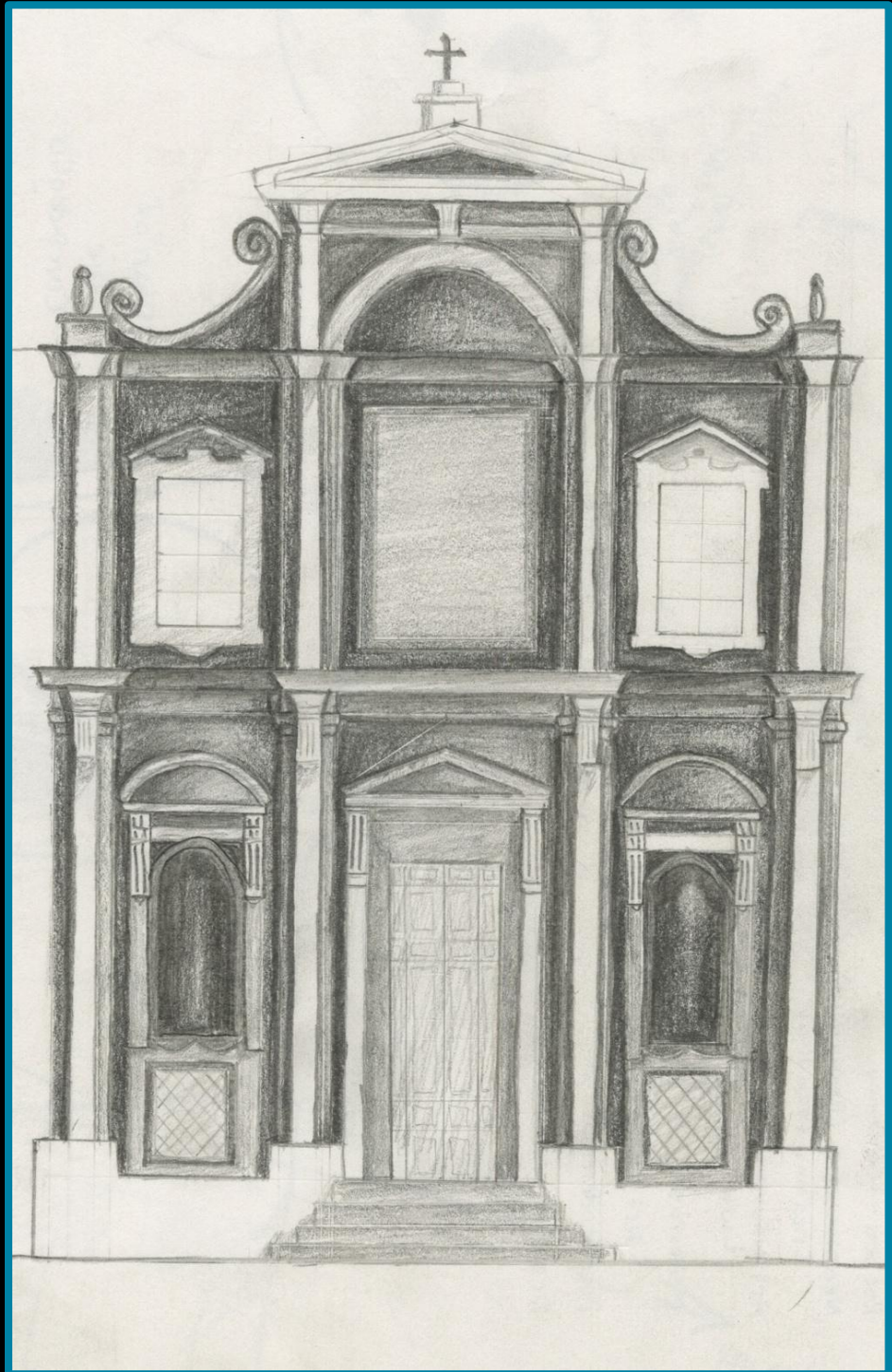


Castel Sant'Angelo | Rome:
Photograph depicting the statue of
Gabriel on the top of Castel Sant'Angelo.
The deep shadows created on the statue
bring out the drama of the scene.

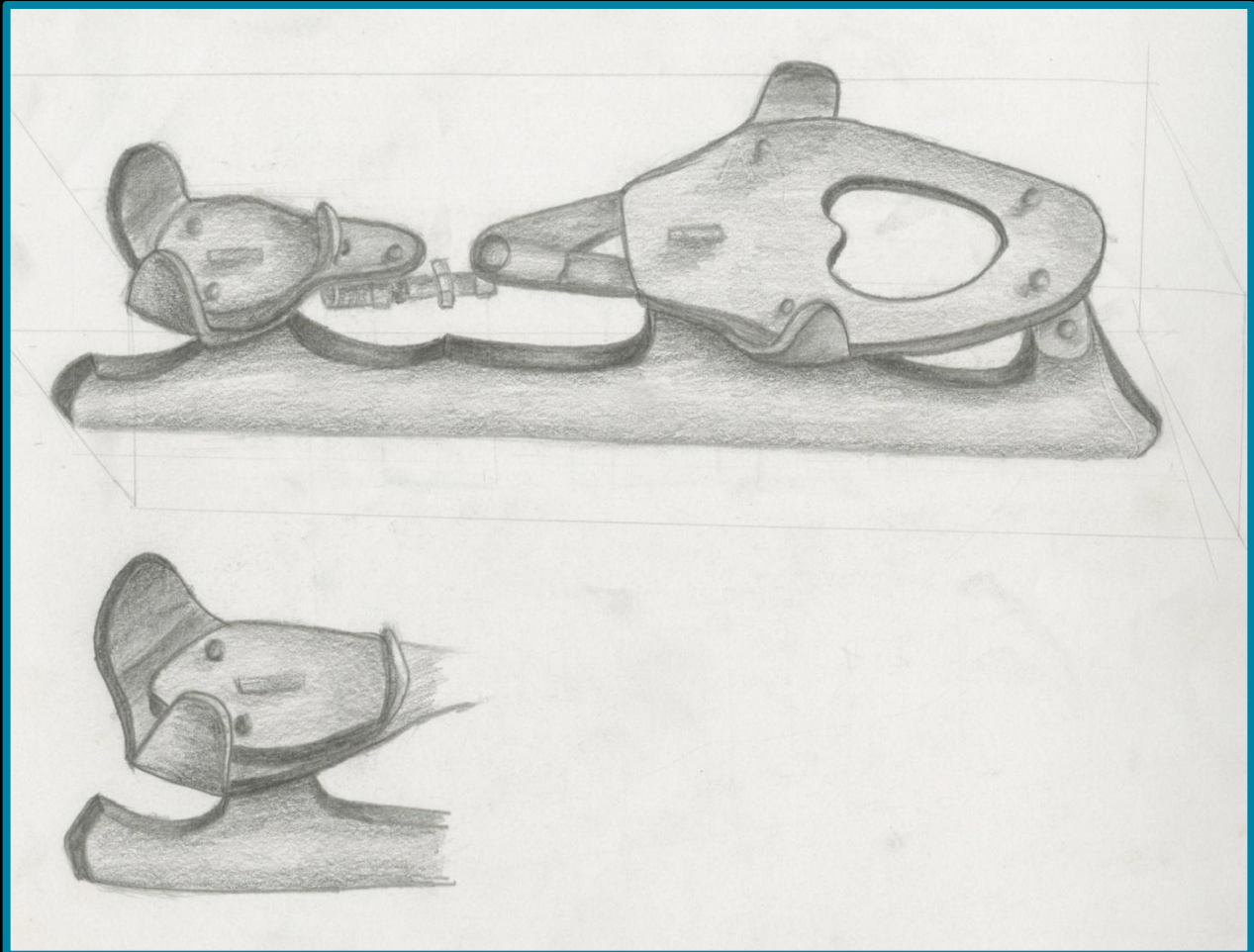


MAXXI Museum | Rome:
Photograph depicting the unique
lighting solution employed on one of
the main stairs in the museum

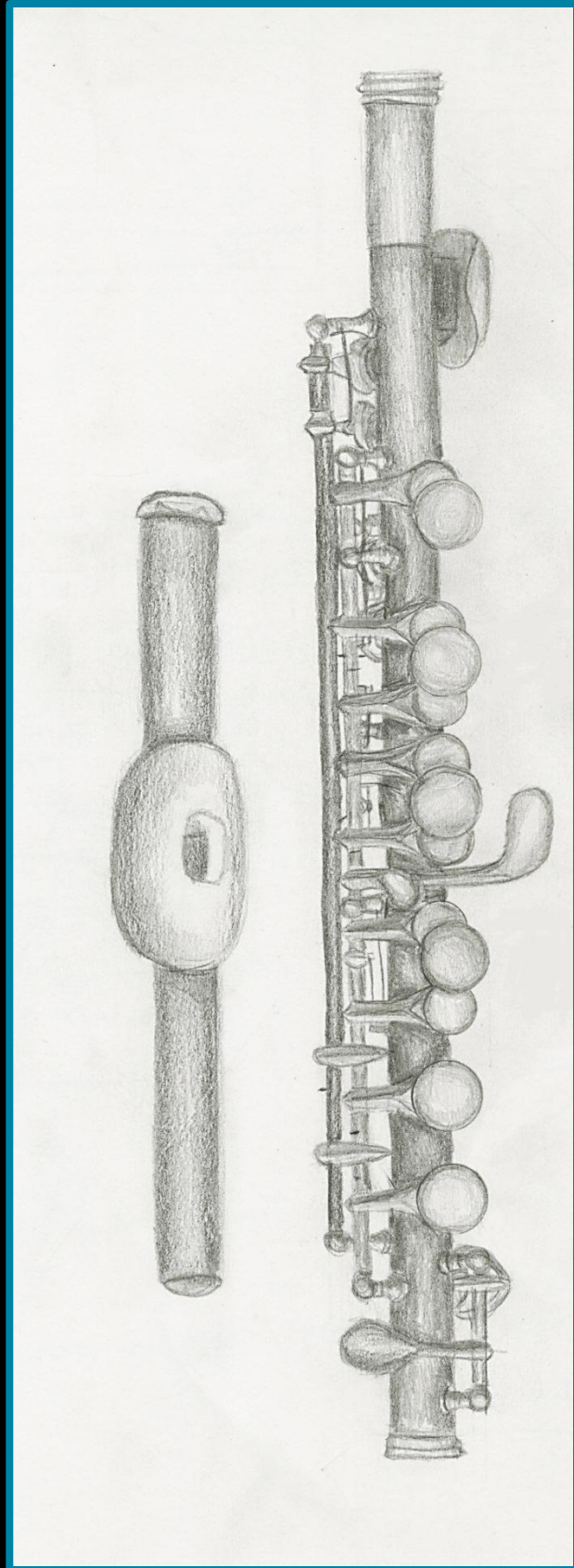




Piazza
Dell'Oratorio | Rome:
Sketch to aid in
understanding the
historical buildings
surrounding the site
for a Studio project



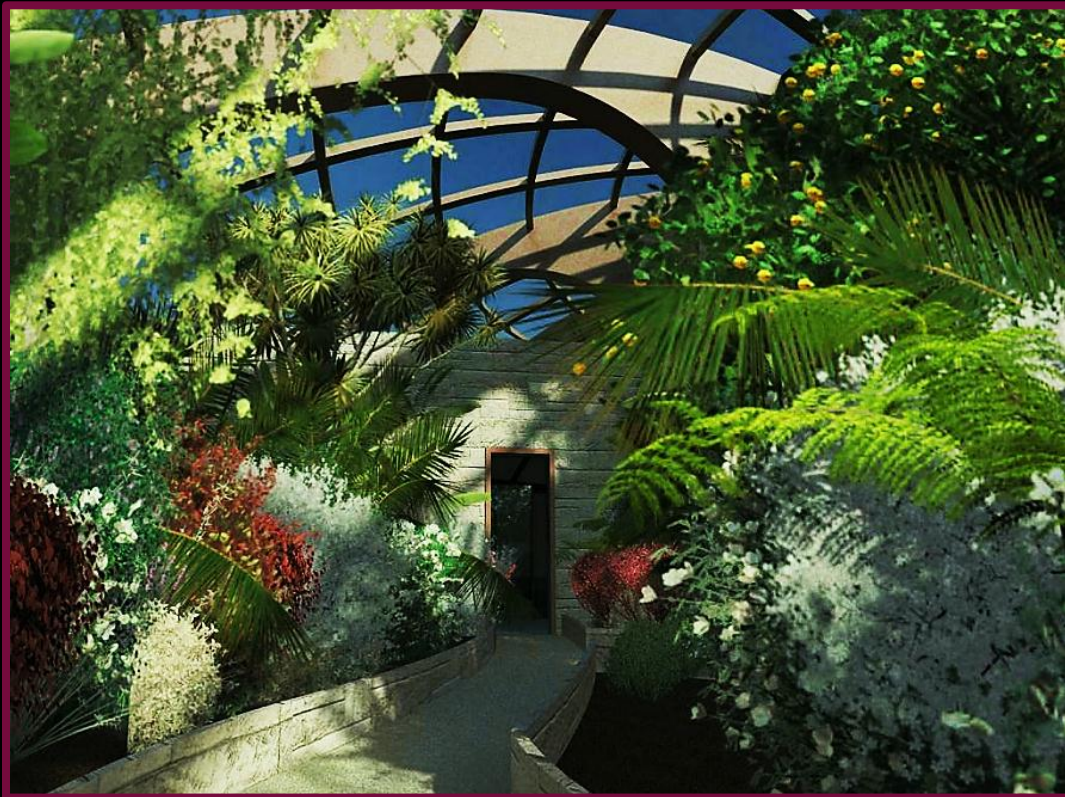
Study Drawing of an Ice Skate: A study of how shadows fall on different objects and how to portray them graphically



Study Drawing of a Piccolo:
Sketch to investigate how
light interacts with an
object and how it creates
shadows



Theodore: Sketch investigating textures and shadows on an object



Penn State Conservatory Project: 4th year Studio project to design a conservatory and science complex. All modeling and rendering for this project was done in Autodesk Revit Architecture.



Original Image



Neutral Image



Re-lit Image

Photoshop Editing: The goal of this project was to select an image on the internet, then redesign the lighting at a conceptual level by using Photoshop.



Light Structures Model:
To investigate how to represent various Flynn Models by building a scaled physical model and setting different scenes through lighting in a space.



Light Structures Model:
To investigate how to represent various Flynn Models by building a scaled physical model and setting different scenes through lighting in a space.