

# CASINO GOLD

---

Brad Robertson

Technical Report 3

# THE BUILDING

- Size: 309,450
- Levels: 3
- Approximate Cost: \$400 Million
- Project Team
  - Executive Architect: ka
  - Design/Interiors Architect: Friedmutter Group
  - Construction Manager: Whiting-Turner
  - Structural Engineer: Carroll Engineering, Inc.
  - MEPT Engineer: JBA Consulting Engineers
  - Lighting Design: The Lighting Practice

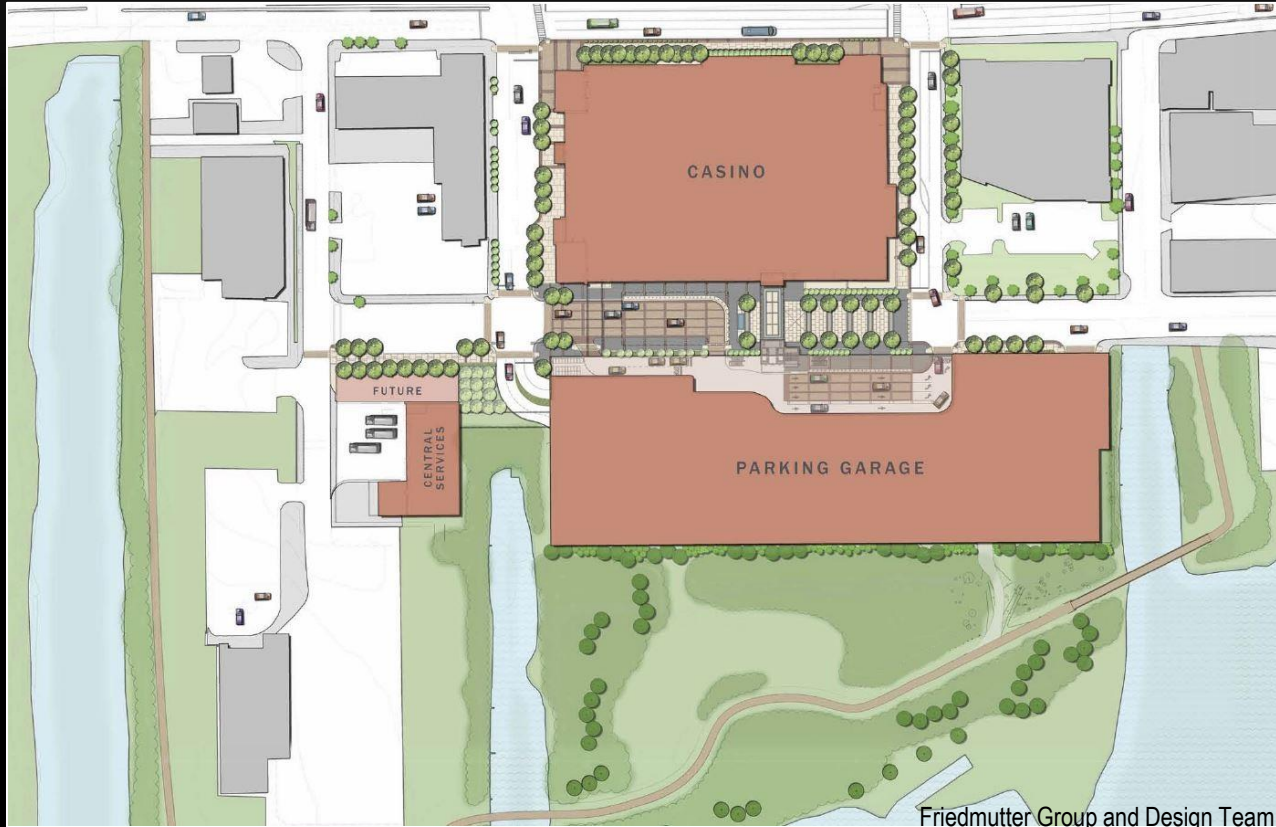


Friedmutter Group and Design Team

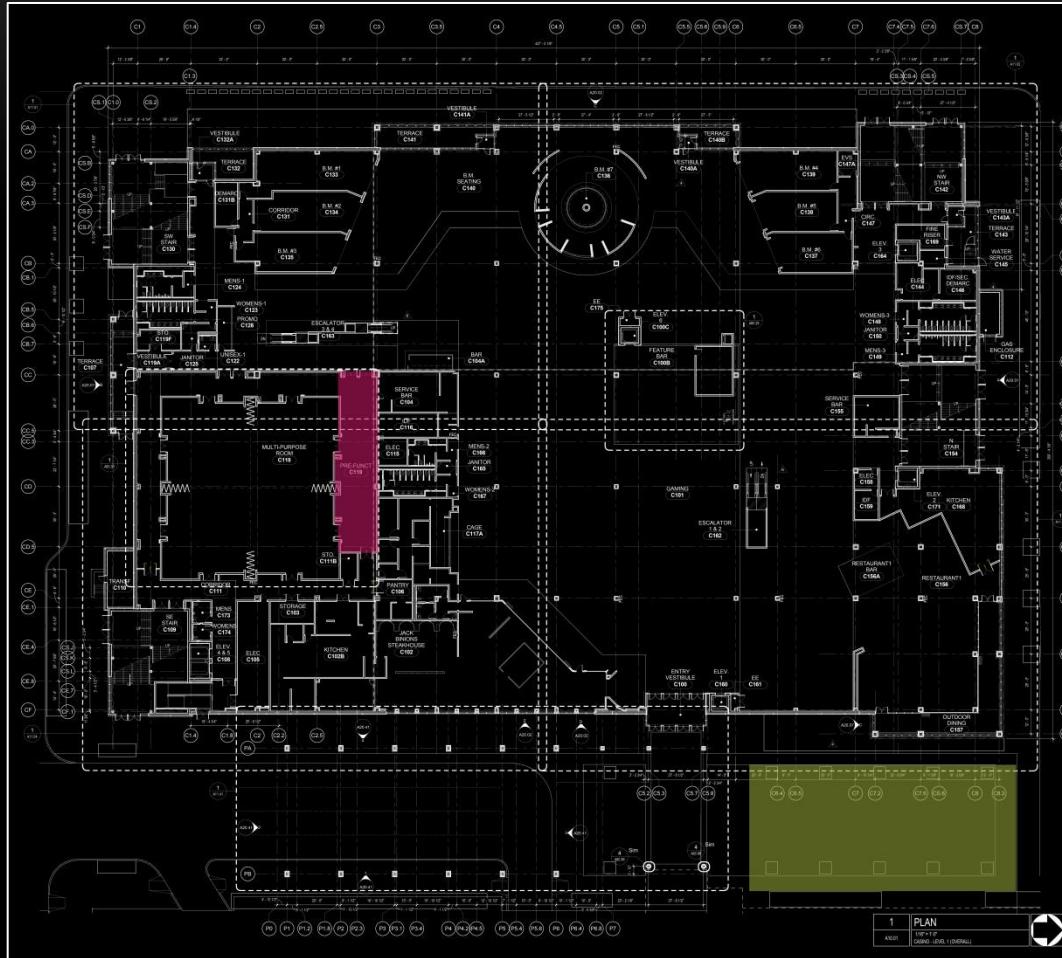


Friedmutter Group and Design Team

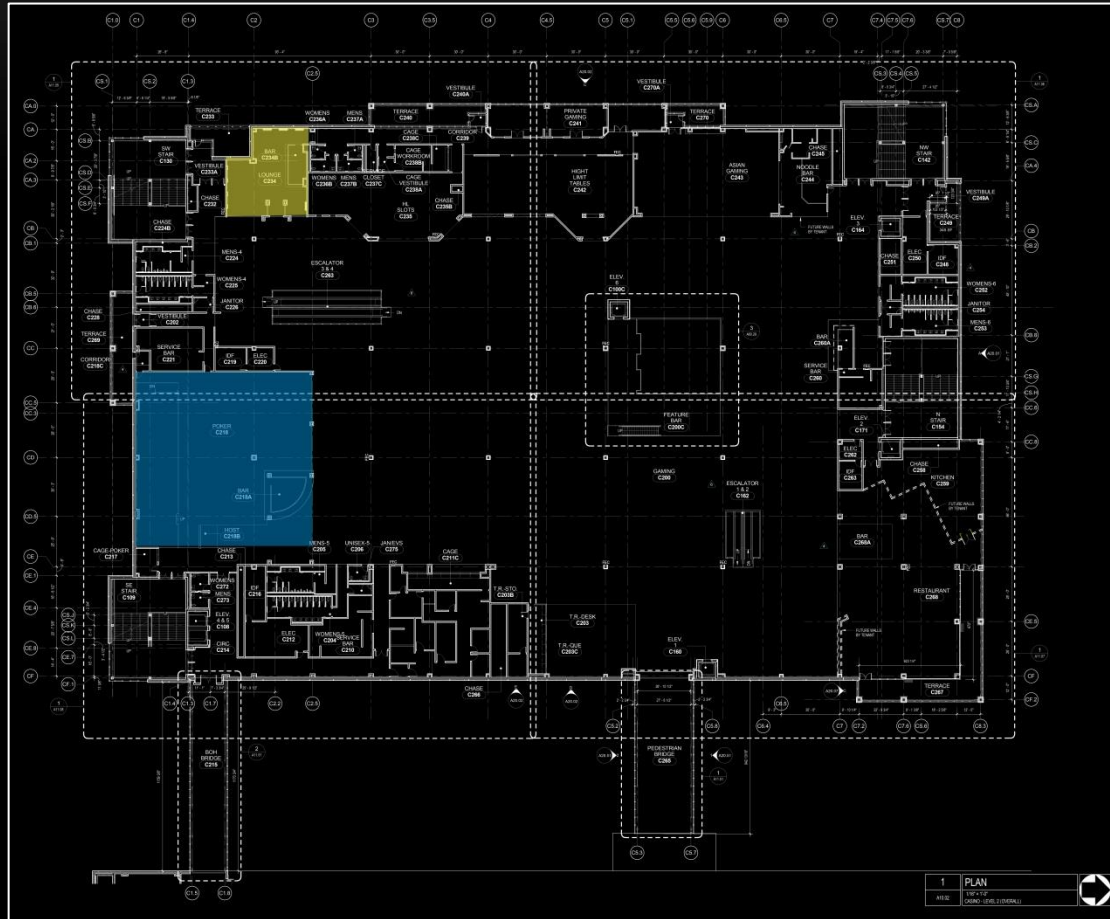
# LAYOUT



# LEVEL 1



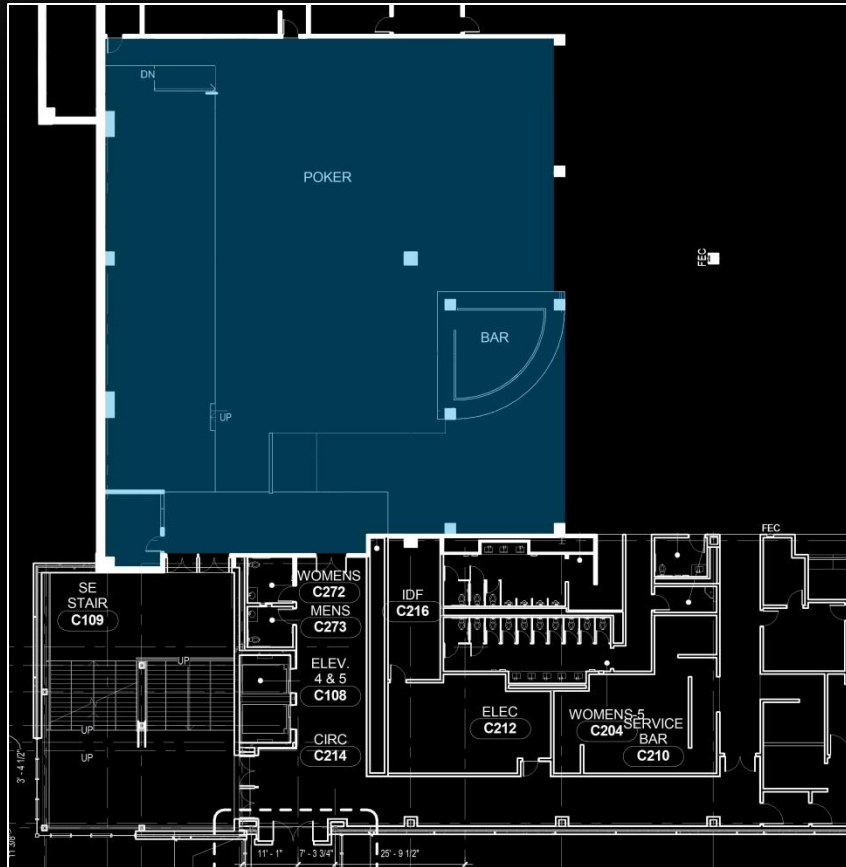
# LEVEL 2



# POKER ROOM



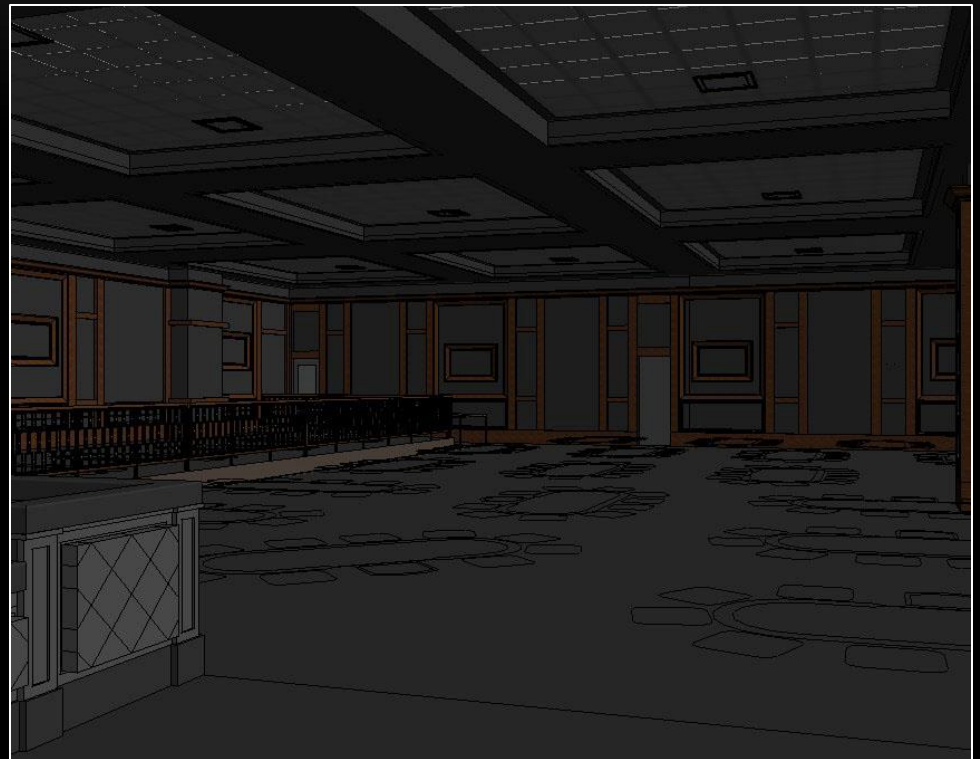
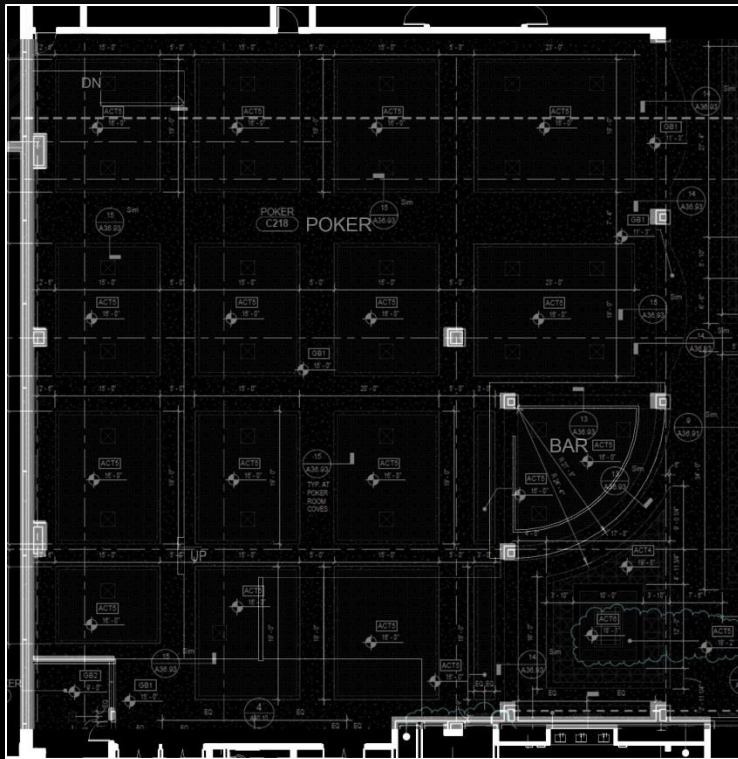
# POKER ROOM



## Design Criteria and Considerations:

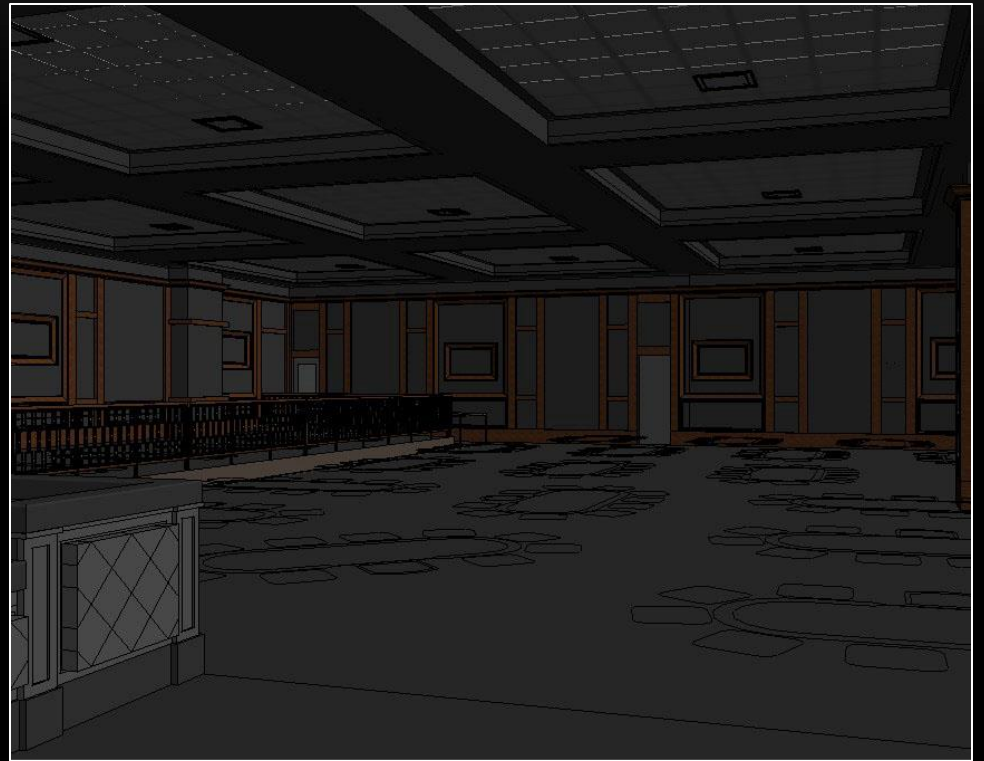
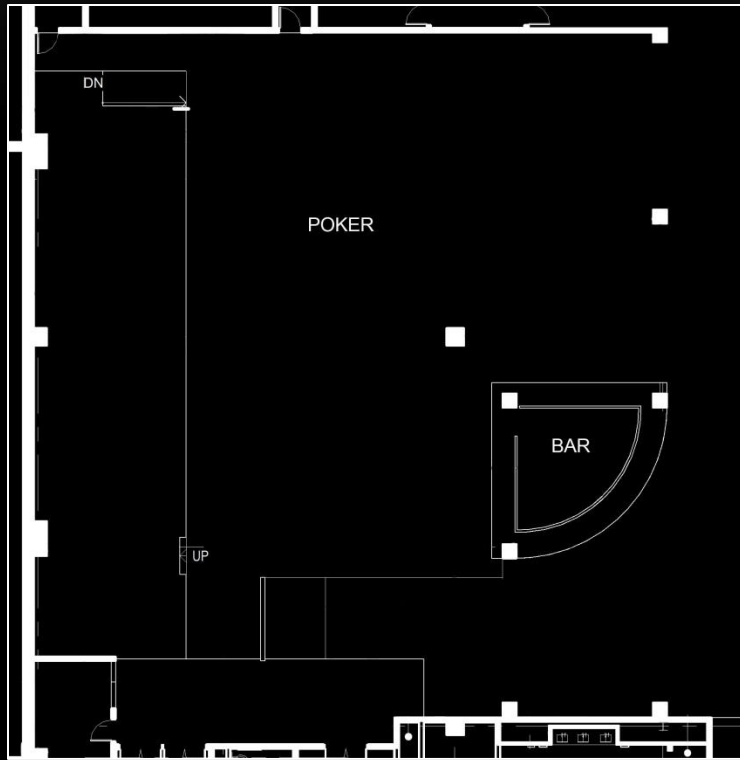
- Workspace for players
- High CRI values
- Ceiling structure
- Avoid glare
- $E_{h,avg} = 50fc$

# POKER ROOM

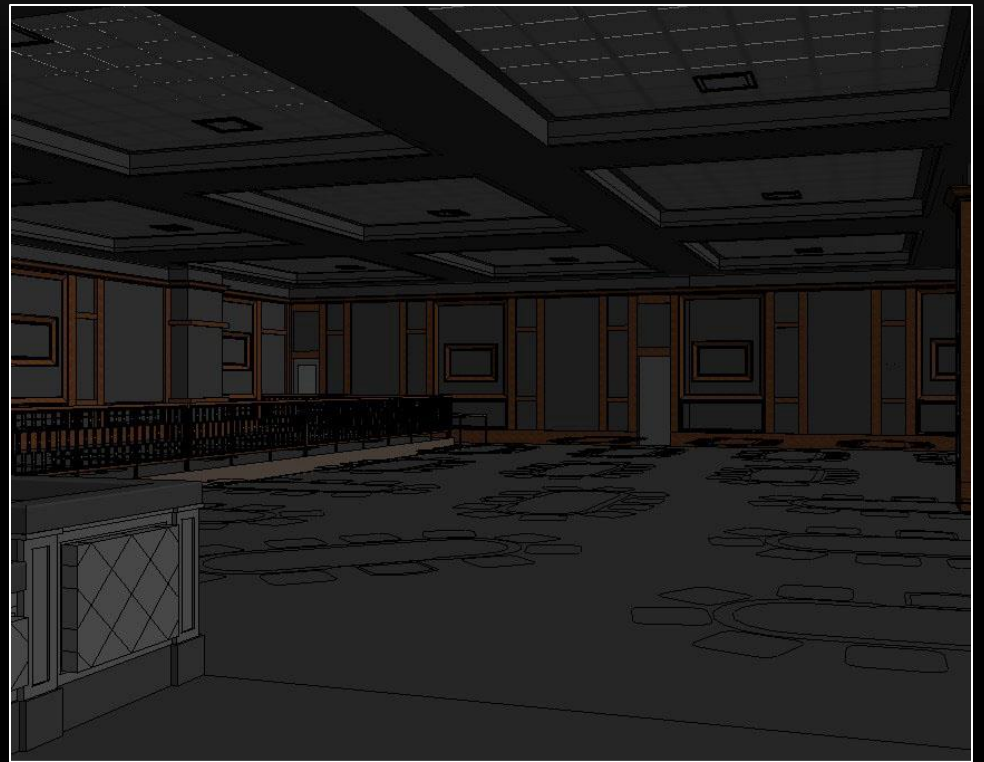
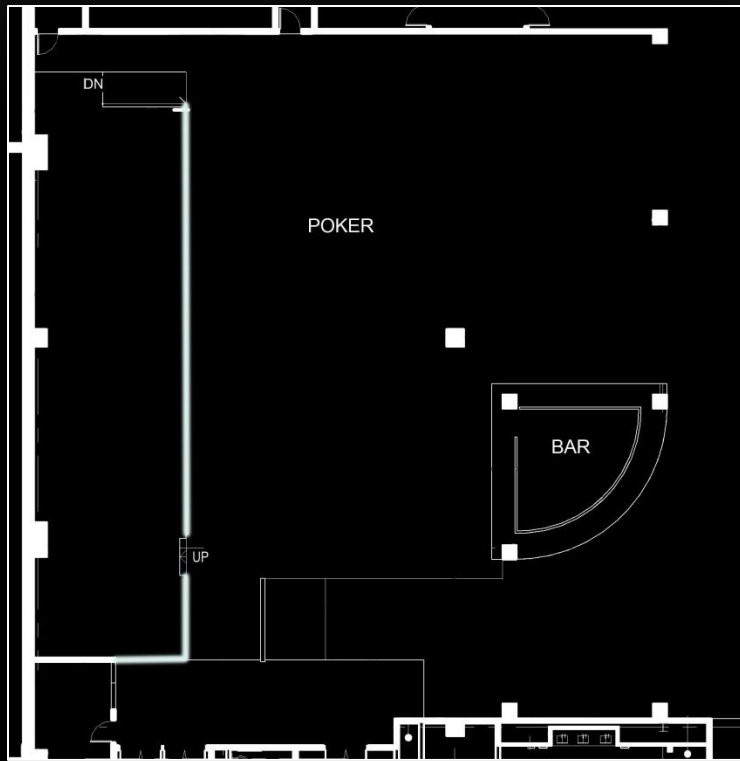




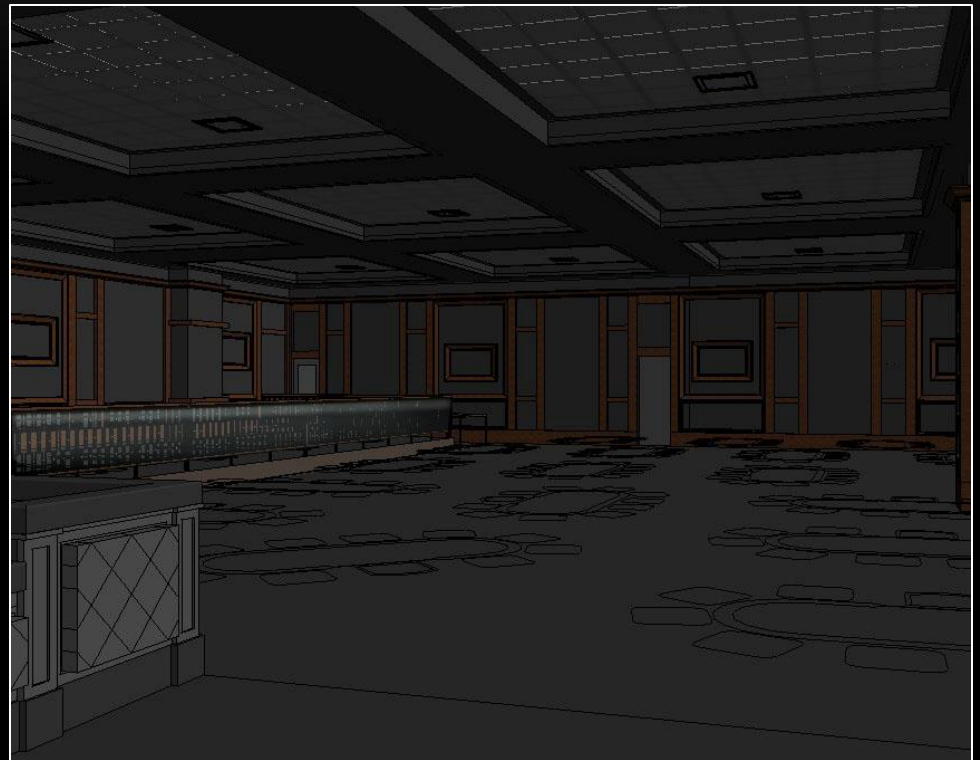
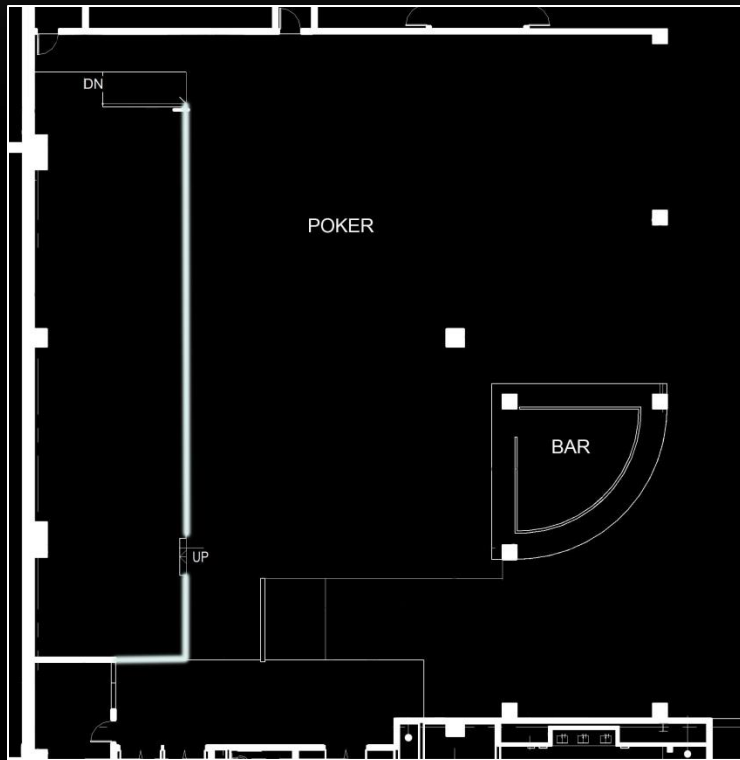
# POKER ROOM



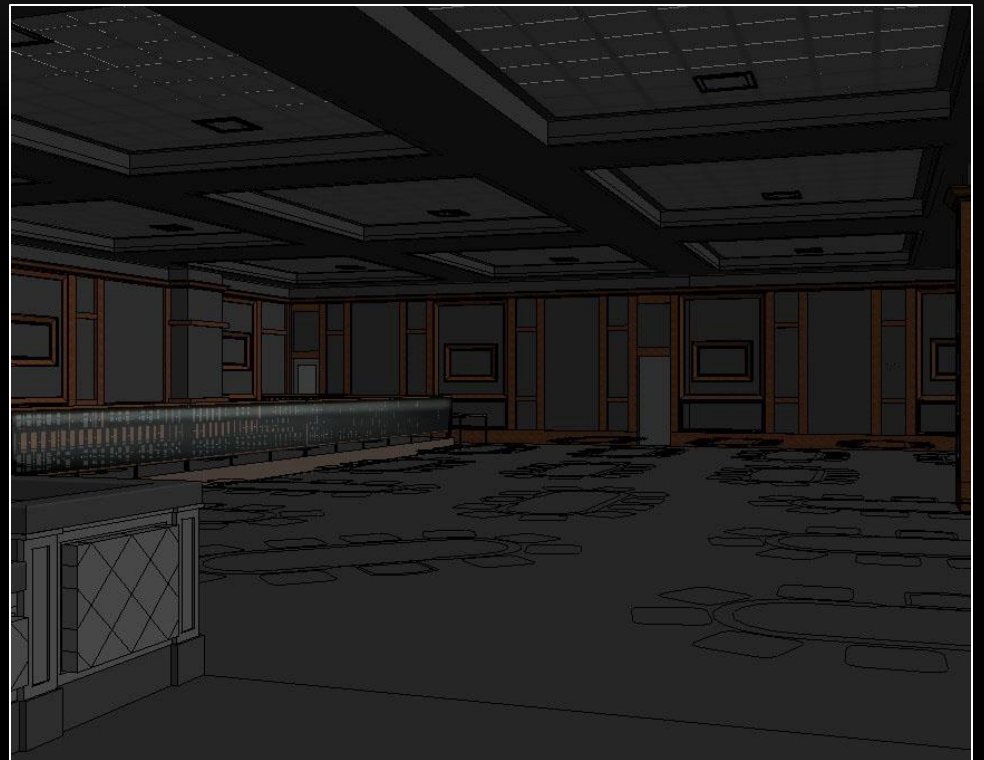
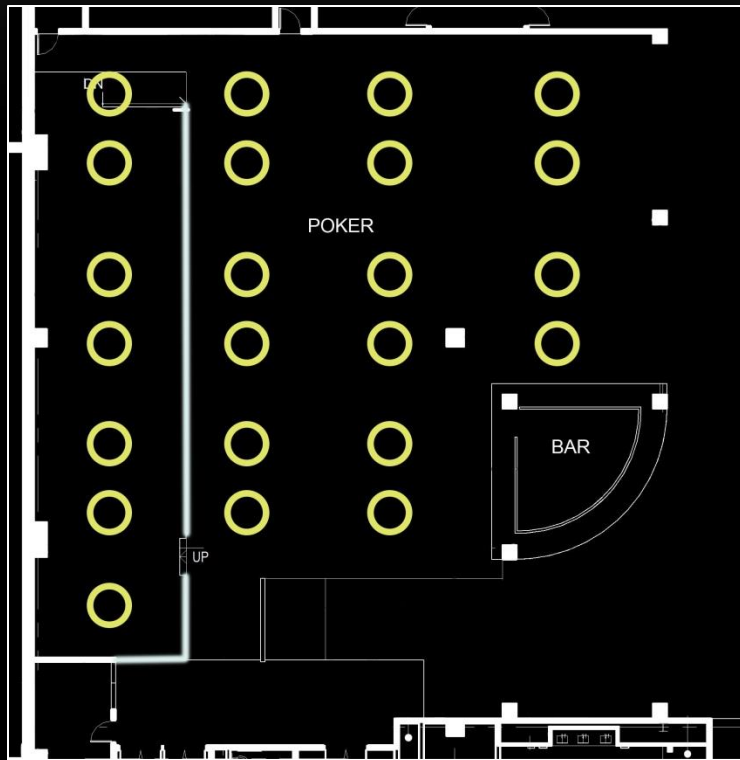
# POKER ROOM



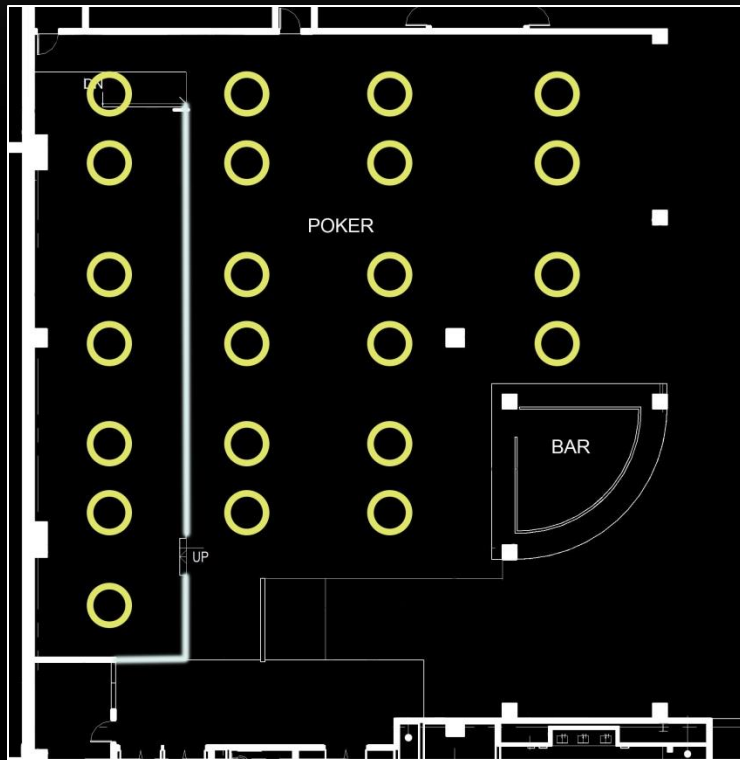
# POKER ROOM



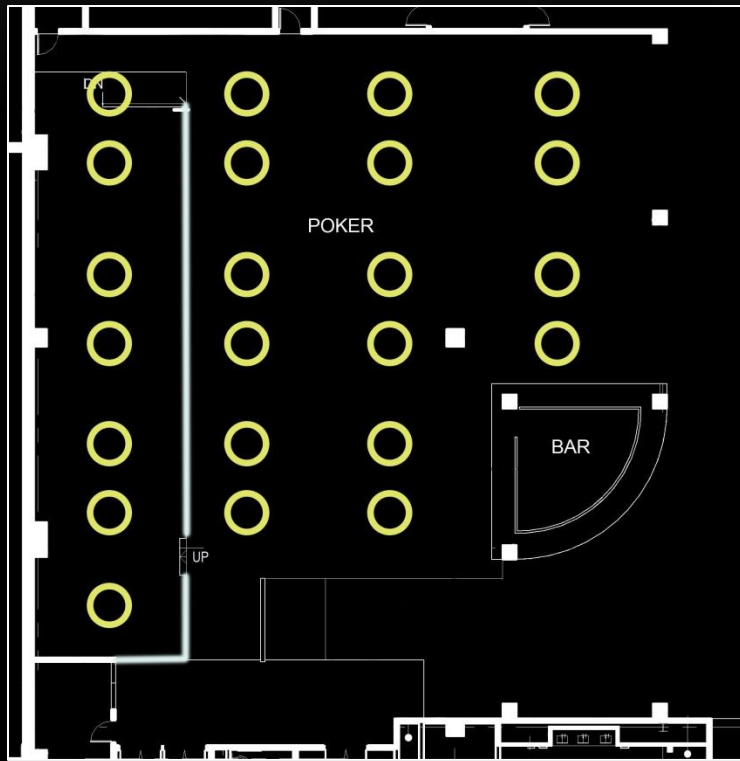
# POKER ROOM



# POKER ROOM



# POKER ROOM



# PLAYER'S LOUNGE



# PLAYER'S LOUNGE



## Design Criteria and Considerations

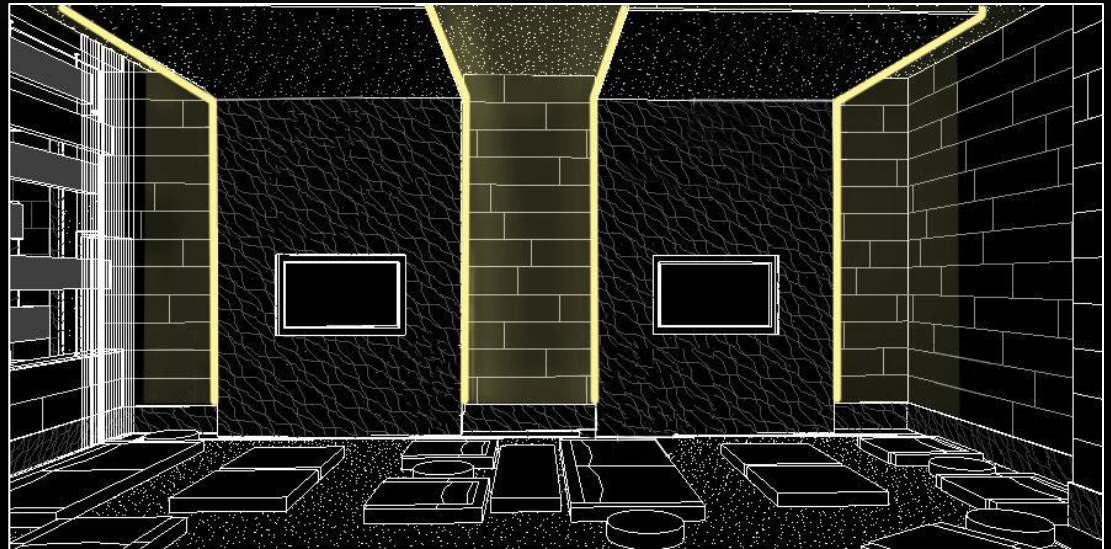
- Bring people together
- Highlight the bar
- Integrate architecture
- $E_{h,avg} = 10fc$  (lounge area)
- $E_{h,avg} = 5fc$  (back bar)



# PLAYER'S LOUNGE



# PLAYER'S LOUNGE



# PLAYER'S LOUNGE

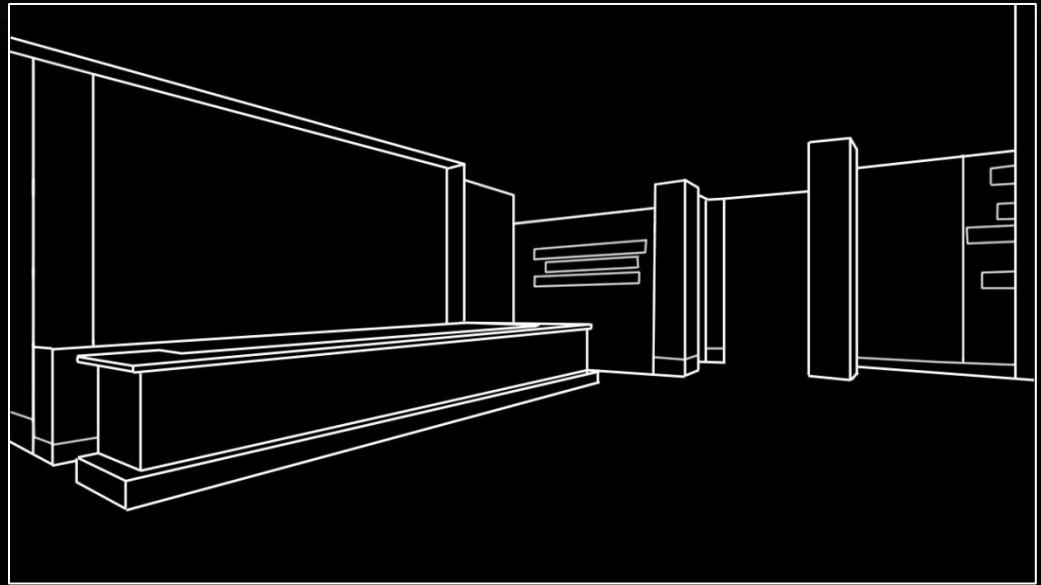


# PLAYER'S LOUNGE

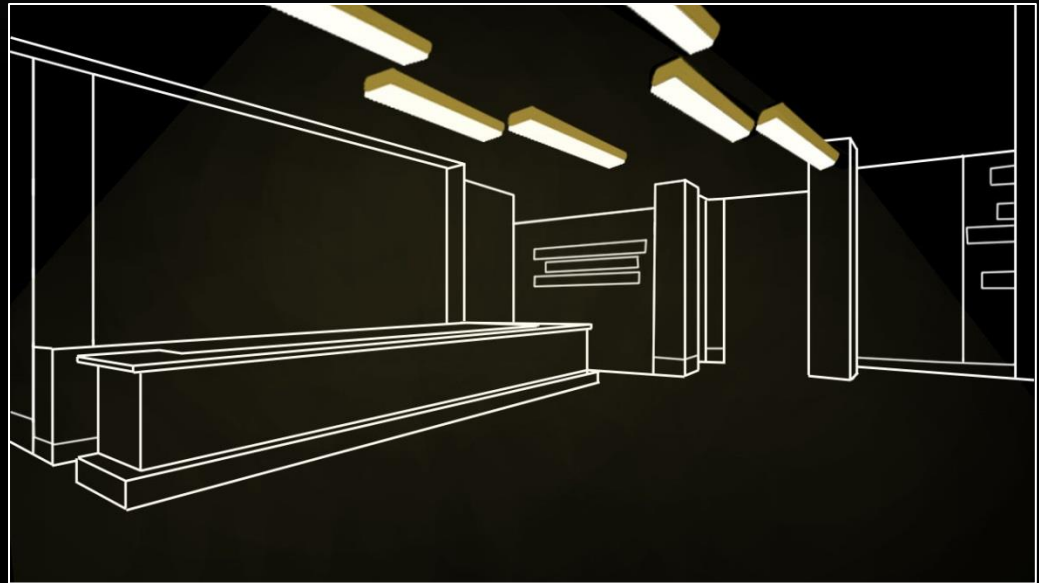


Friedmutter Group and Design Team

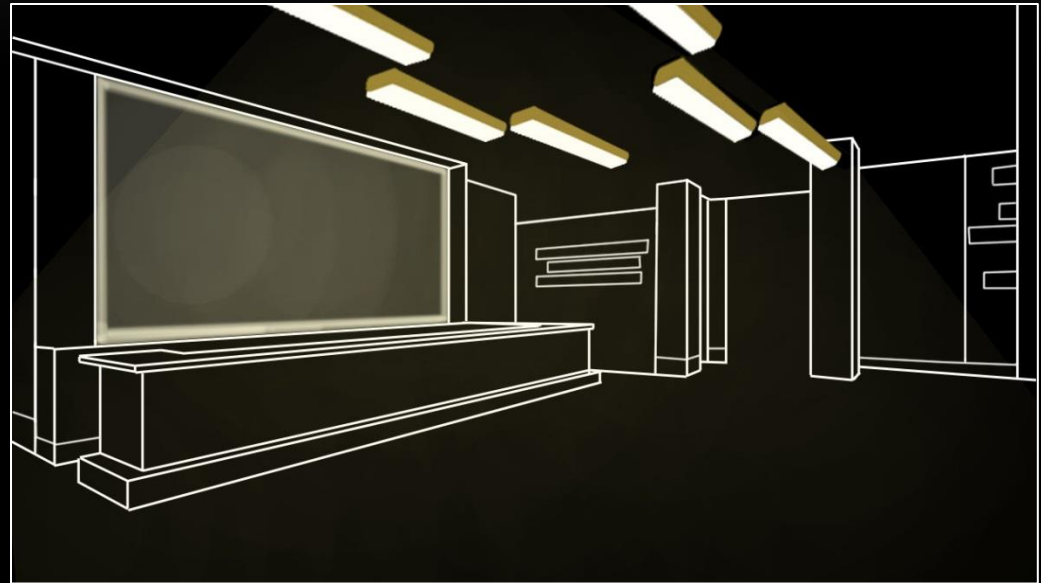
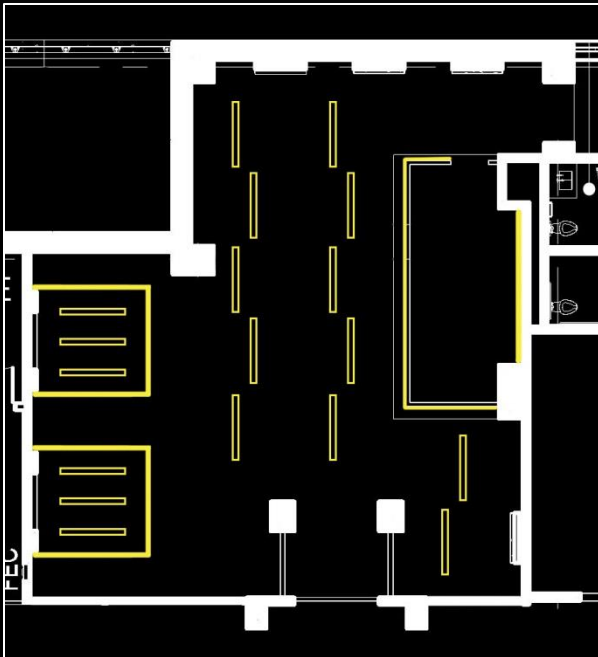
# PLAYER'S LOUNGE



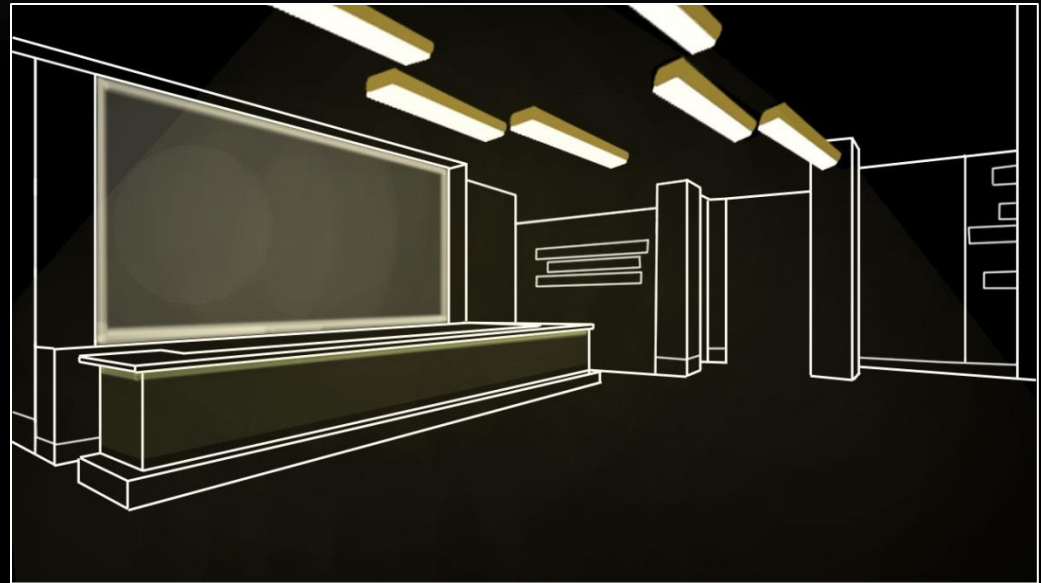
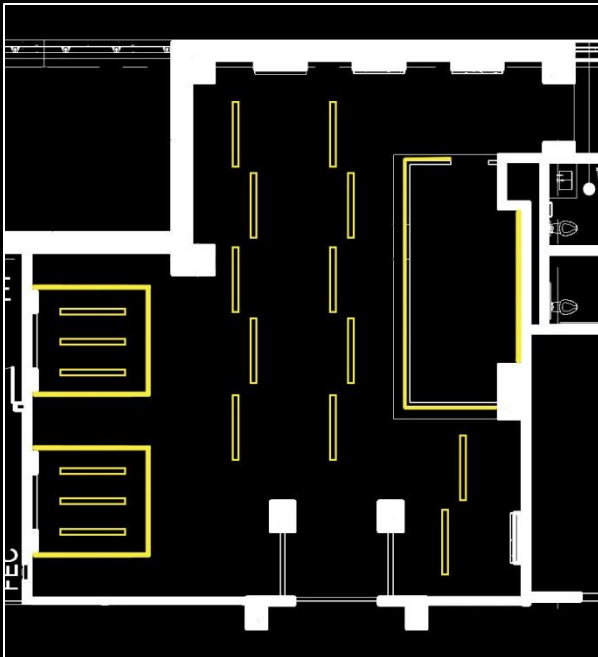
# PLAYER'S LOUNGE



# PLAYER'S LOUNGE

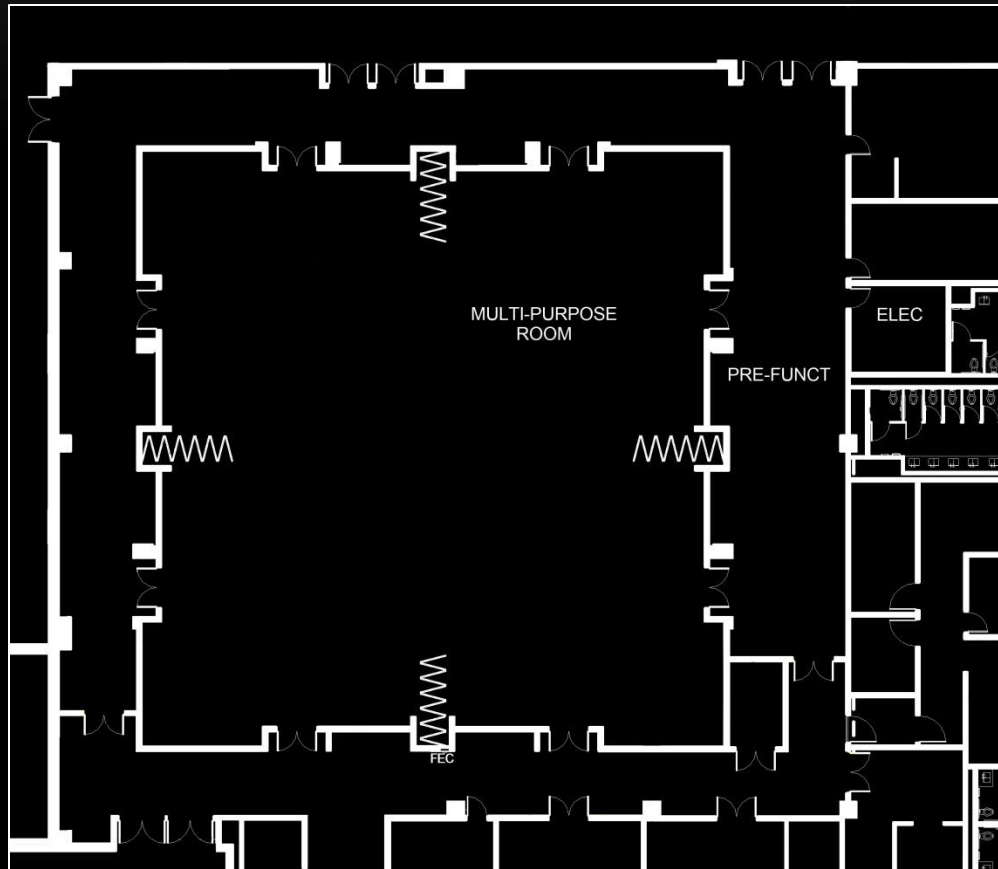


# PLAYER'S LOUNGE

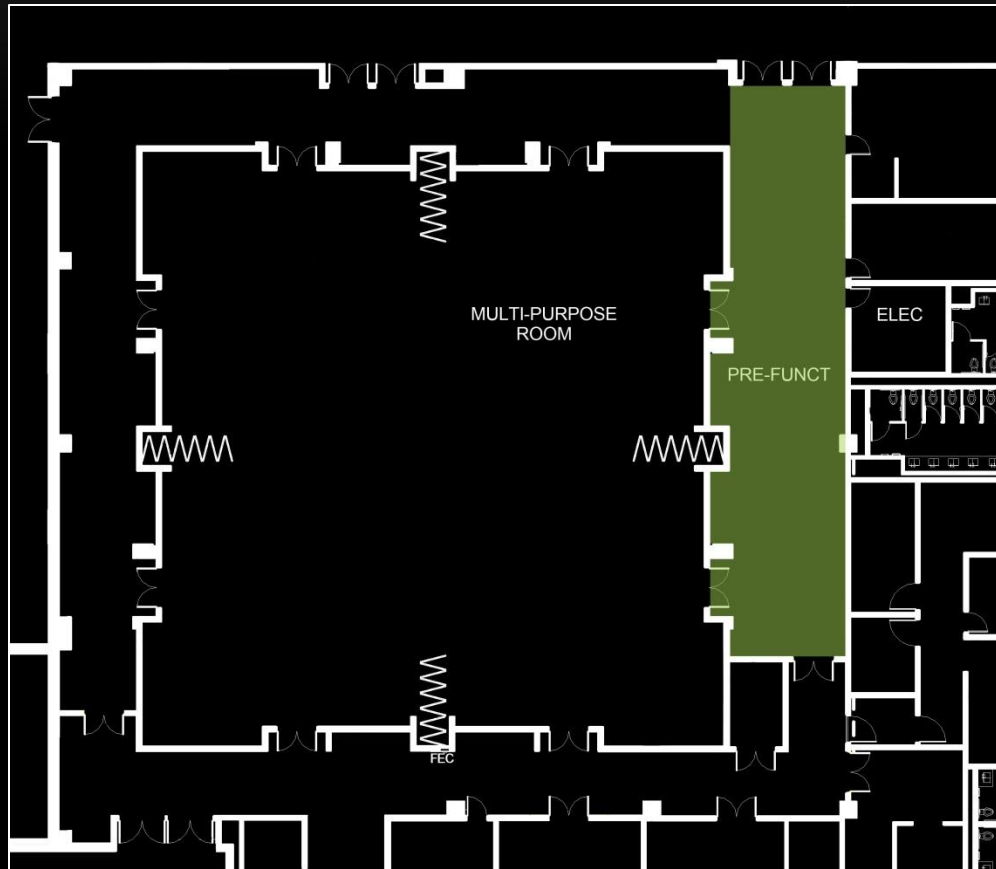




# PRE-FUNCTION



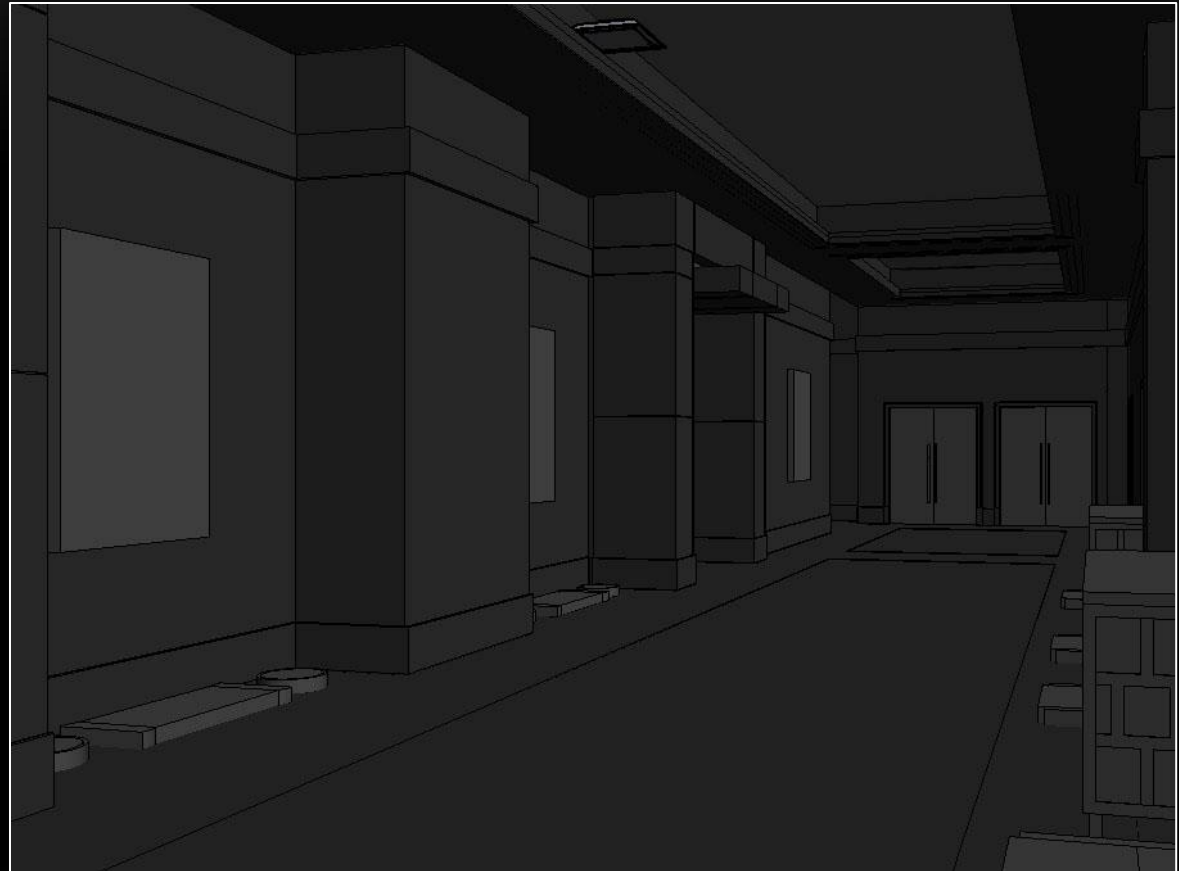
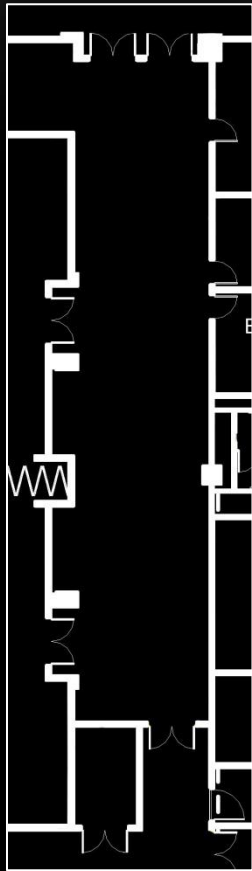
# PRE-FUNCTION



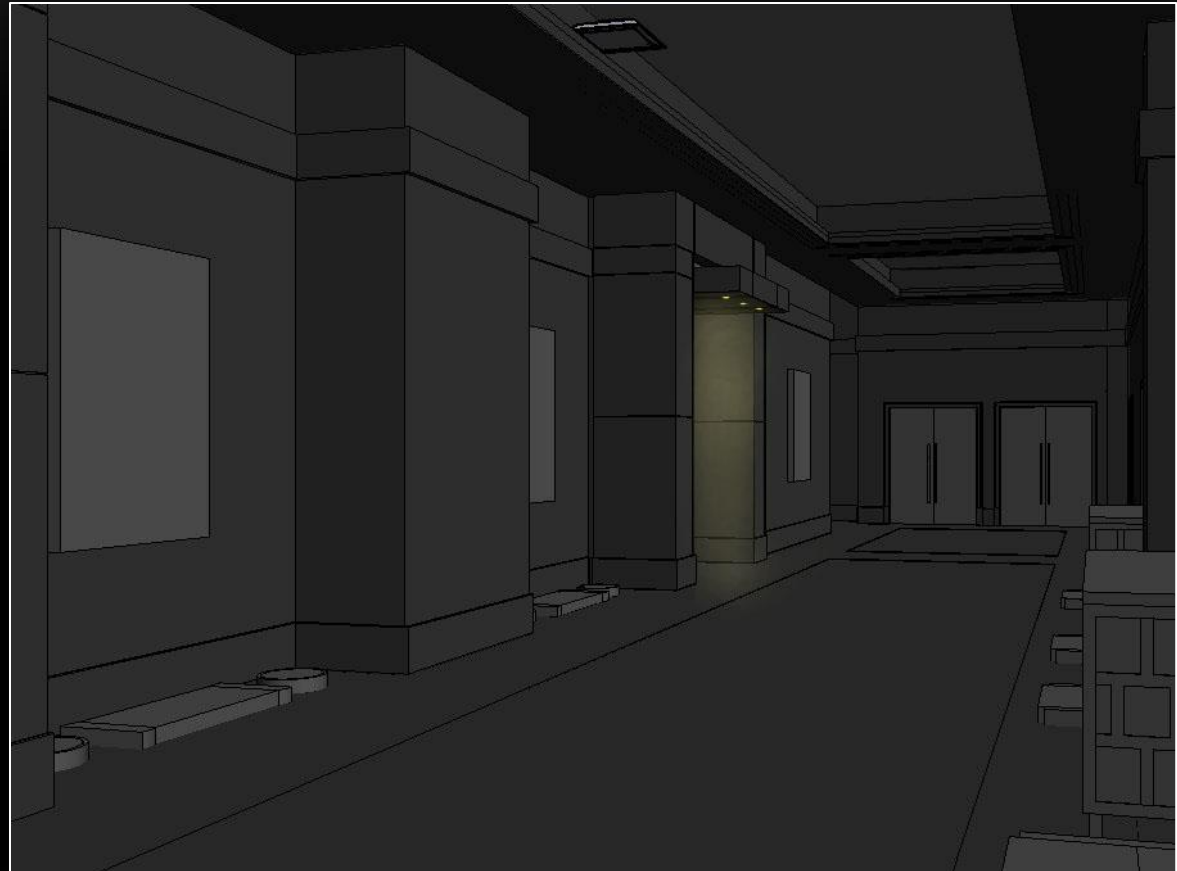
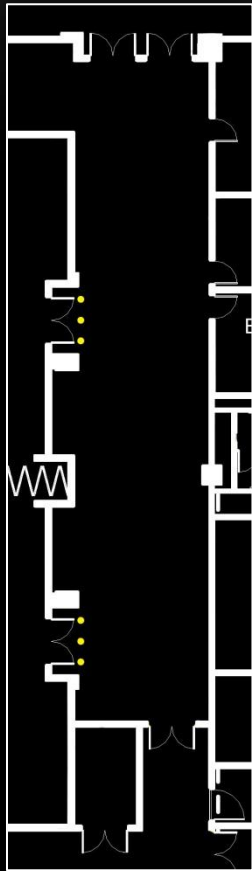
## Design Criteria and Considerations

- Promote impression of spaciousness
- Guide guests
- Open, flexible
- $E_{h,avg} = 30fc$  (high activity)
- $E_{h,avg} = 10fc$  (medium activity)

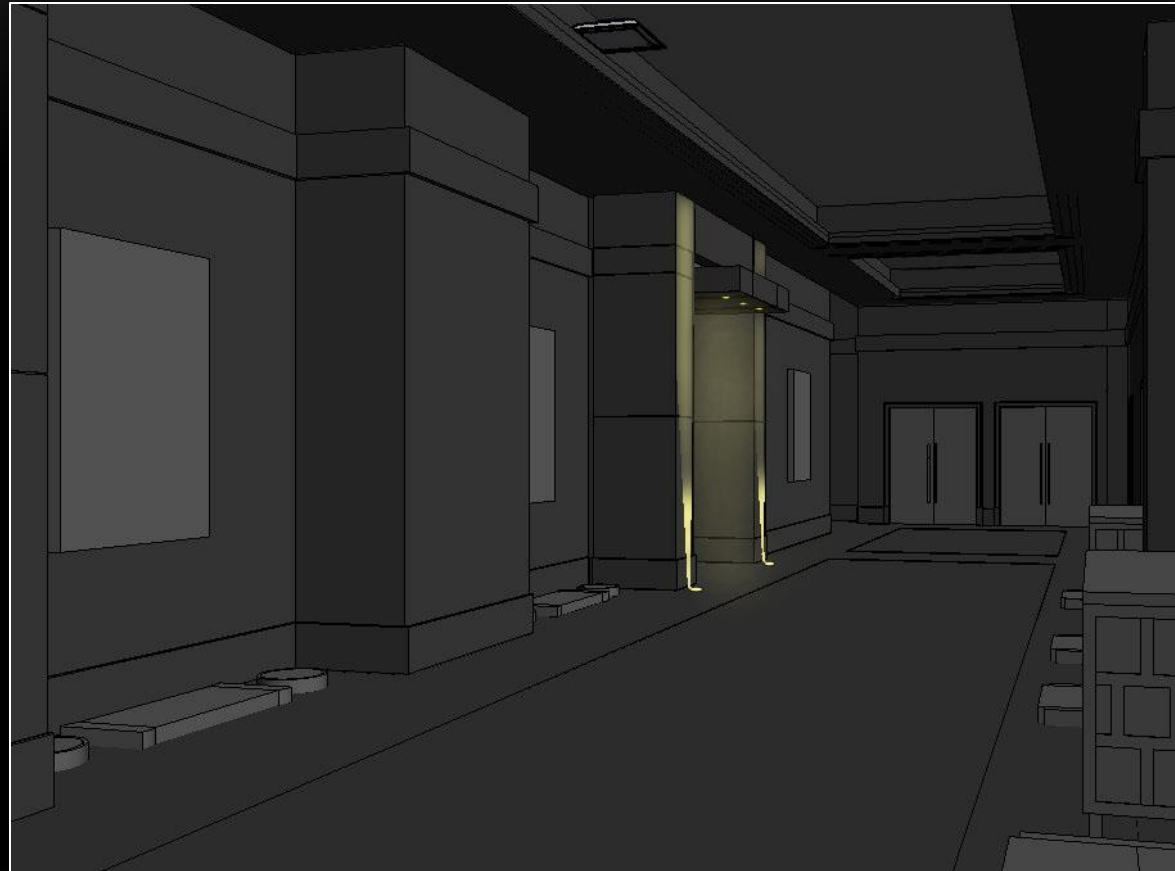
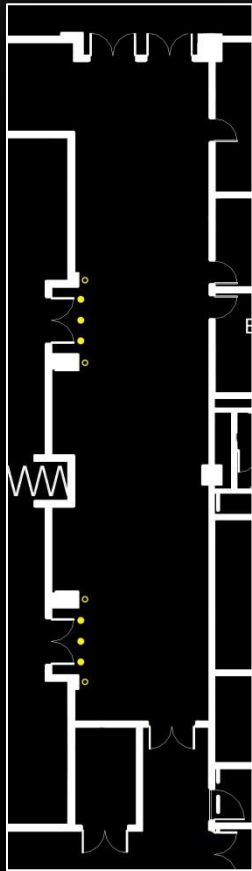
# PRE-FUNCTION



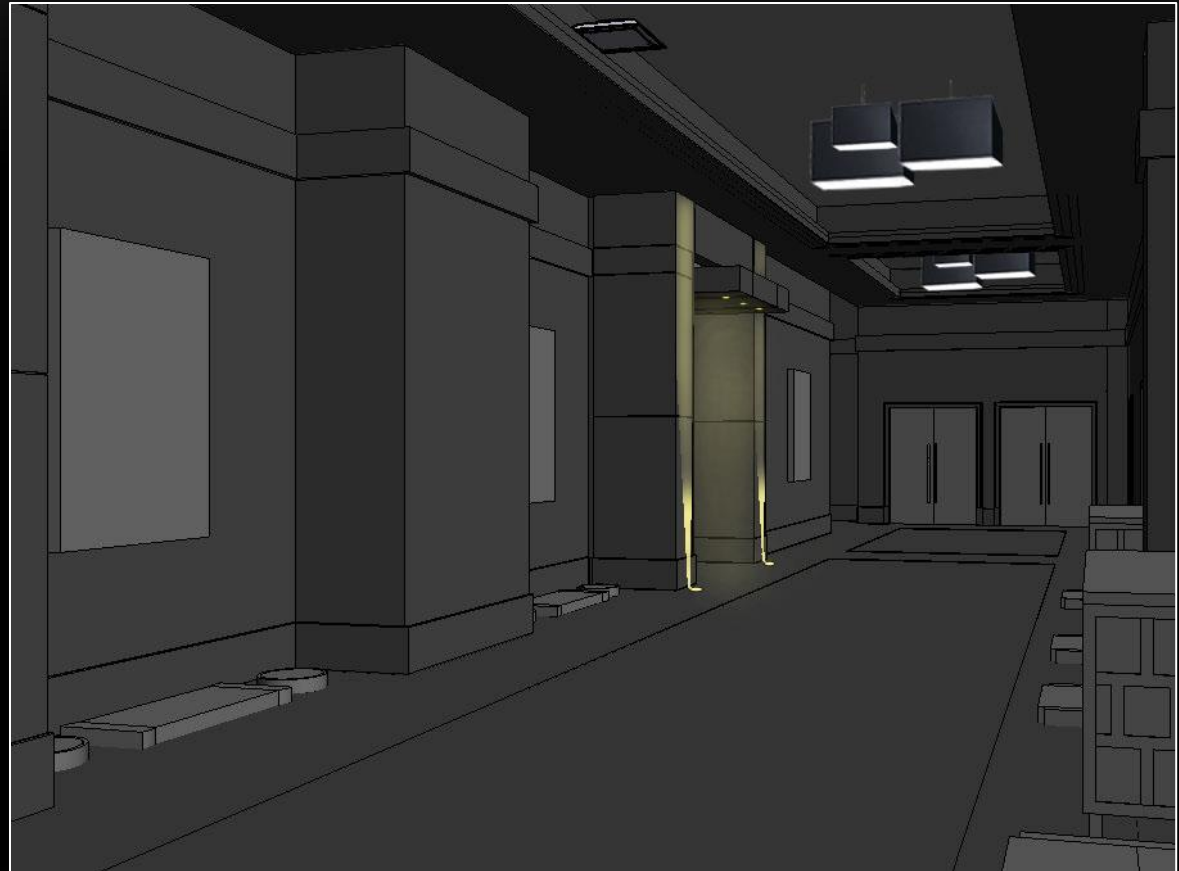
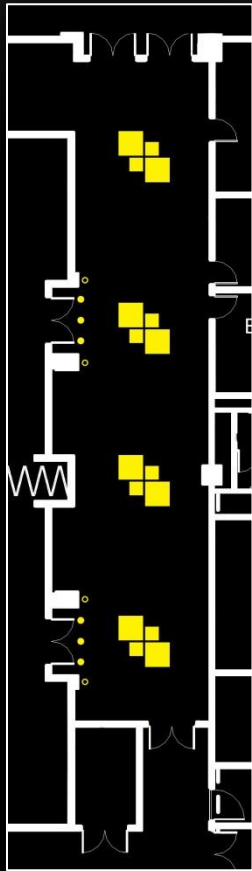
# PRE-FUNCTION



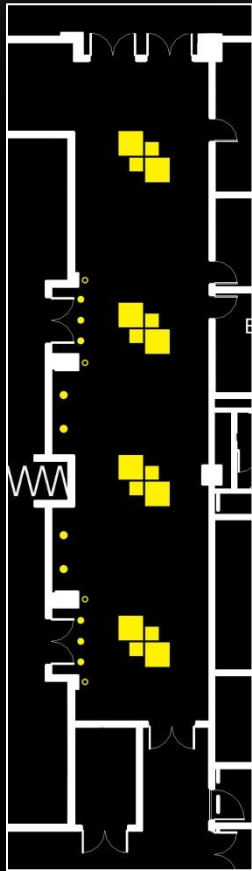
# PRE-FUNCTION



# PRE-FUNCTION



# PRE-FUNCTION

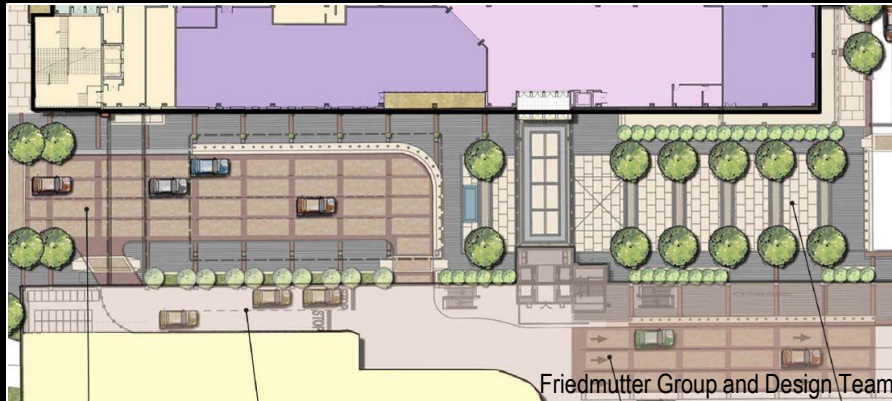


# OUTDOOR PLAZA



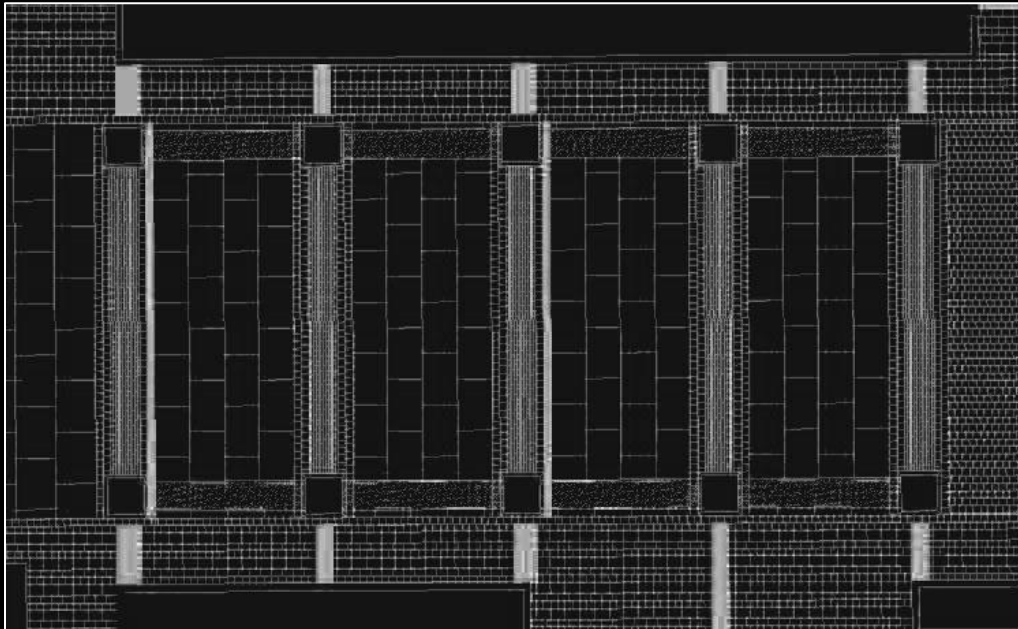
## Design Criteria and Considerations

- Promote safety
- Attract guests
- Guide to casino entrance
- $E_{h,avg} = 1fc$
- $E_{v,avg} = 0.5fc$

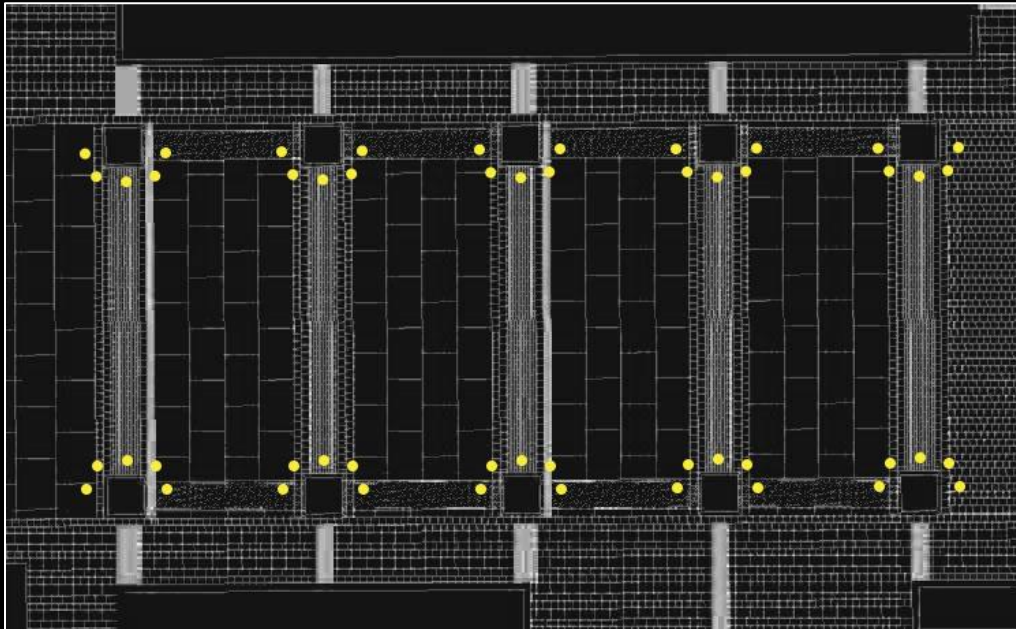




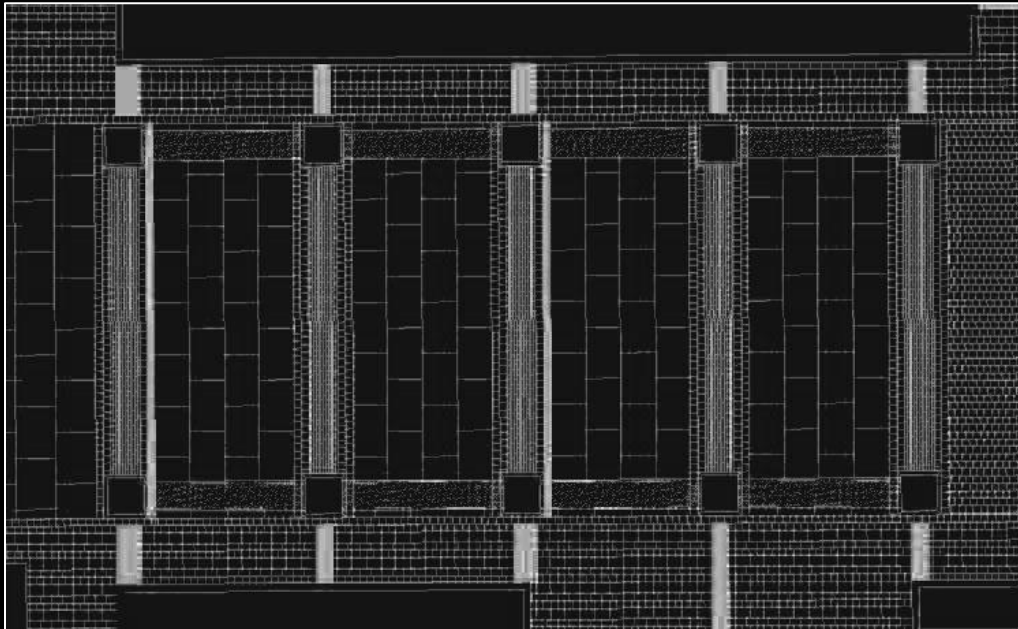
# DESIGN 1



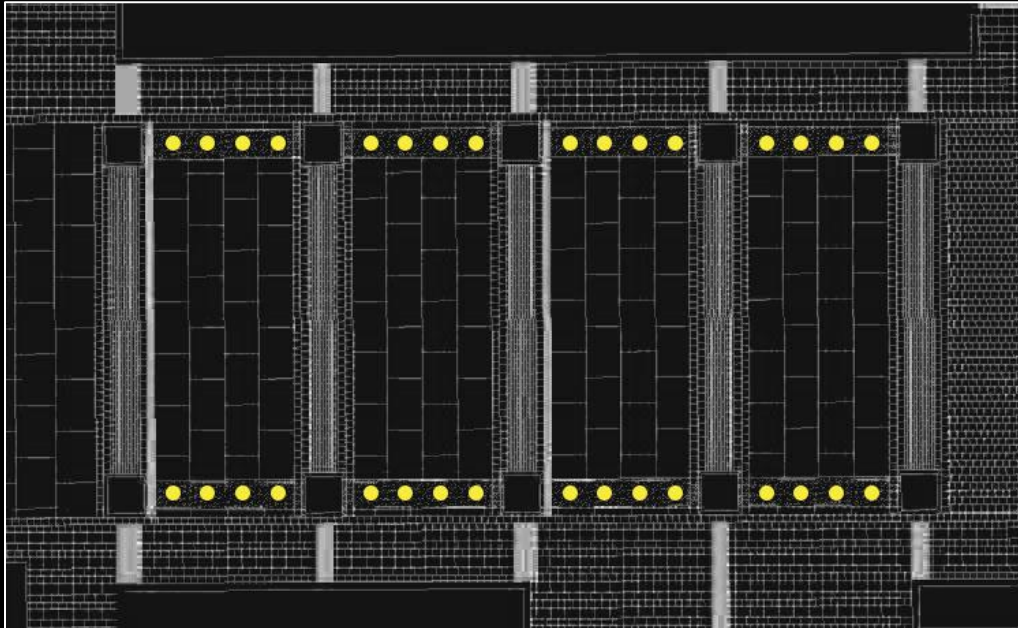
# DESIGN 1



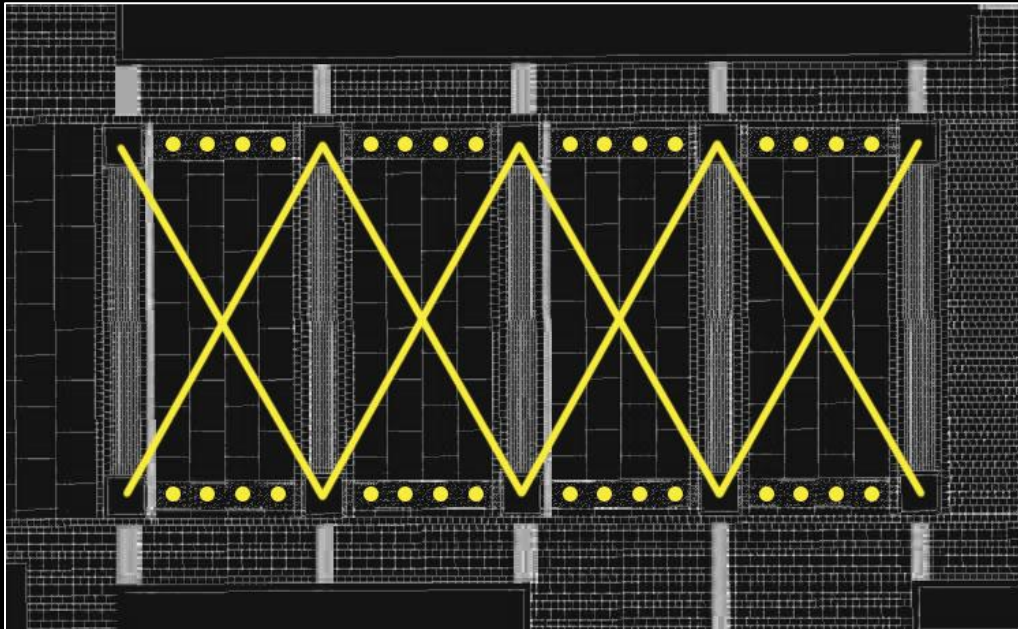
# DESIGN 2



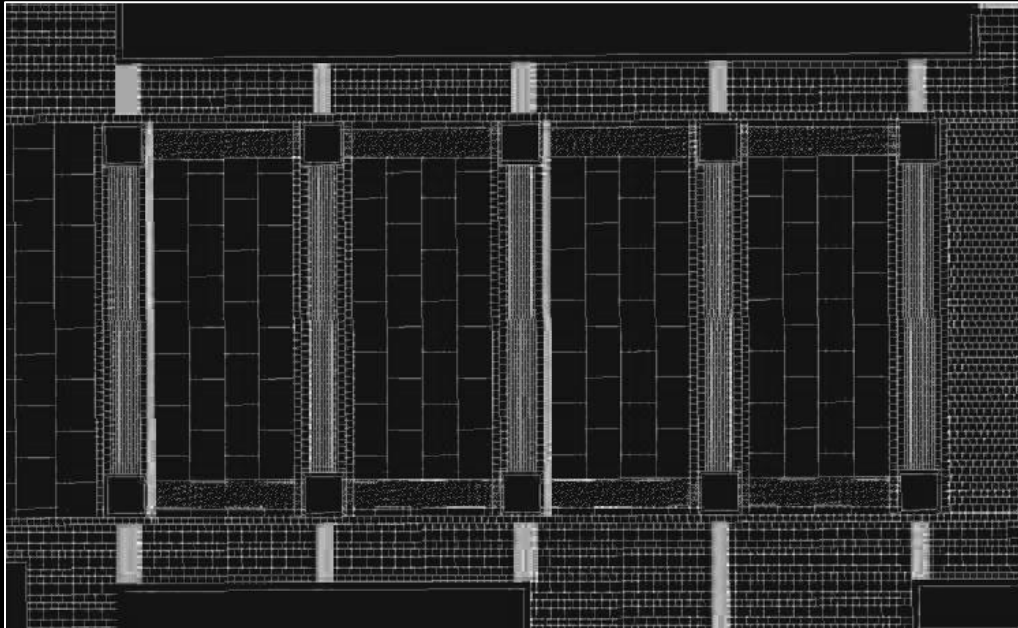
# DESIGN 2



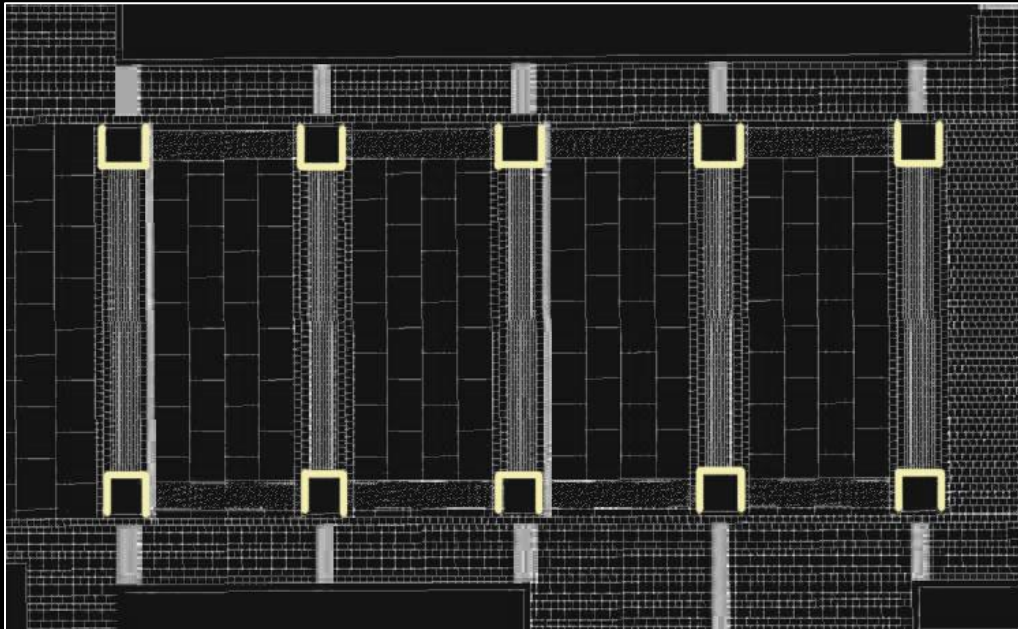
# DESIGN 2



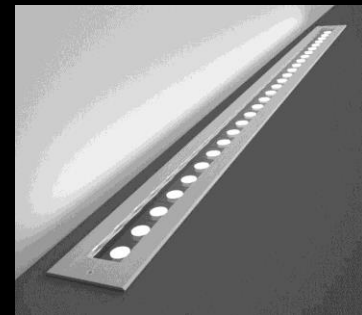
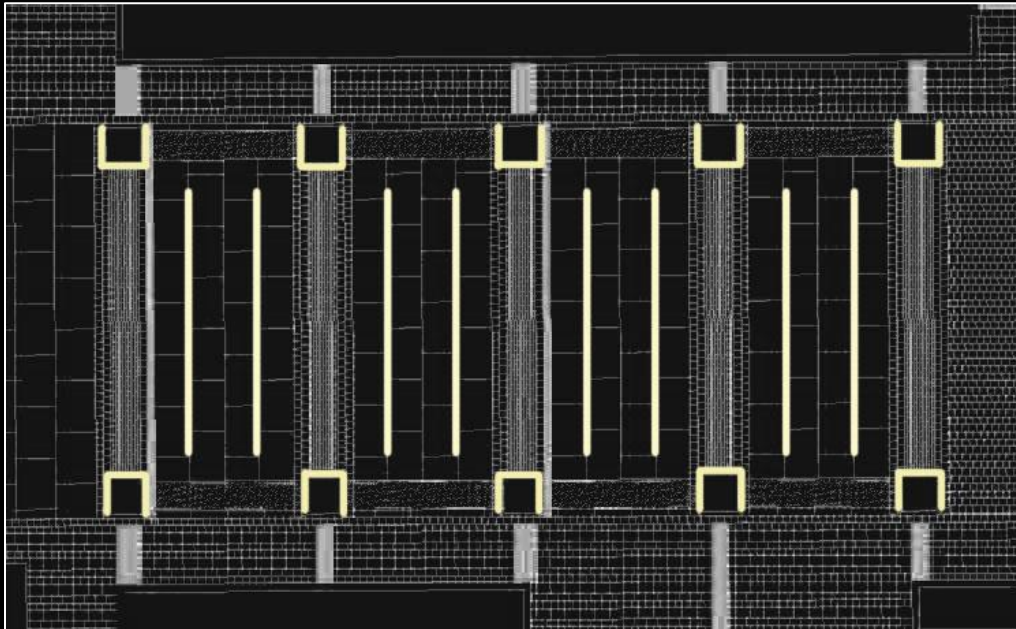
# DESIGN 3



# DESIGN 3



# DESIGN 3

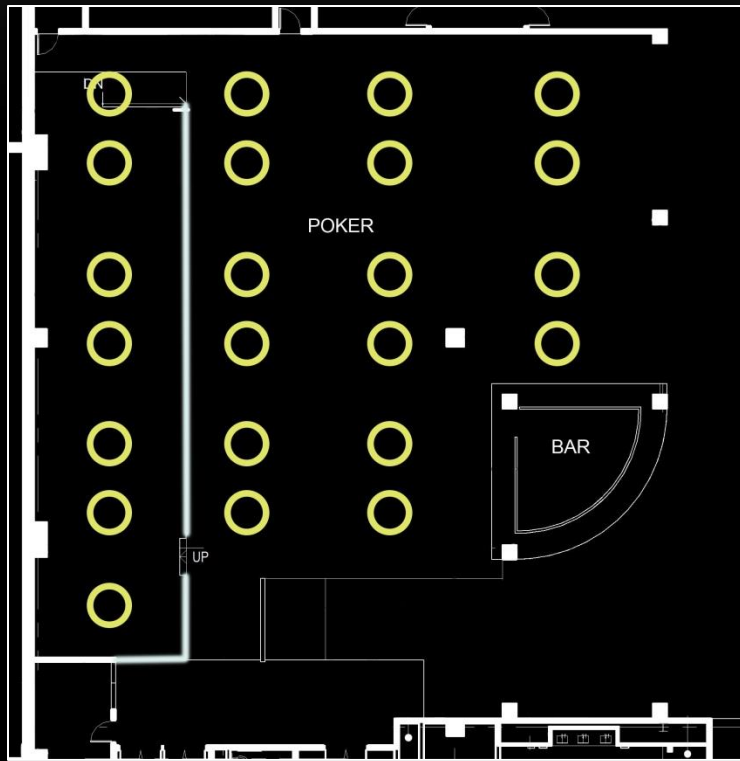




THANK YOU

---

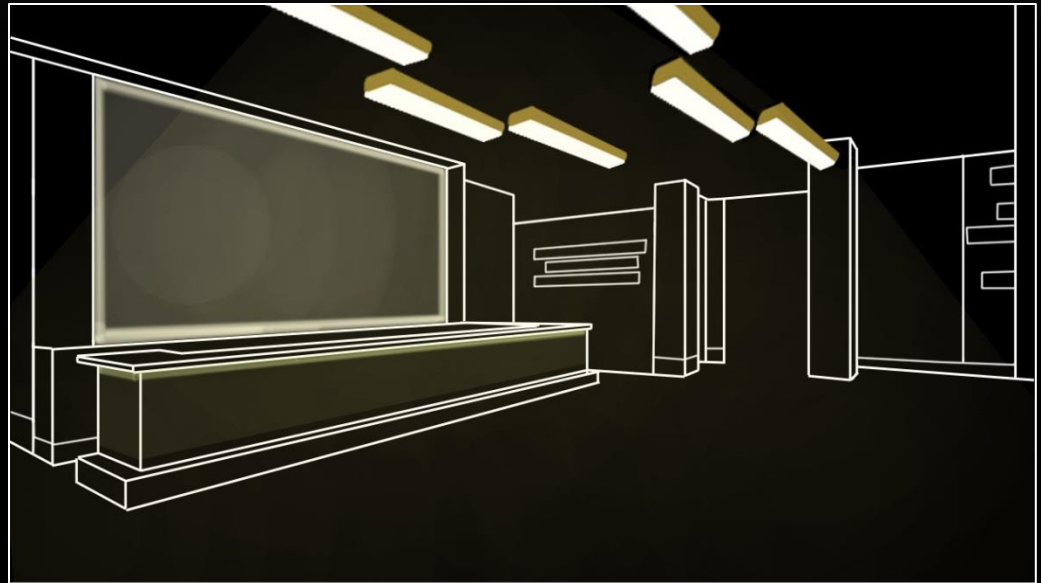
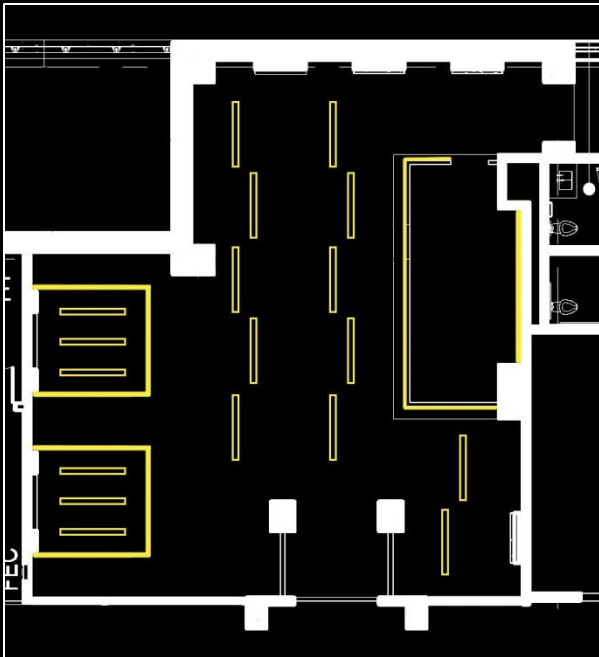
# POKER ROOM



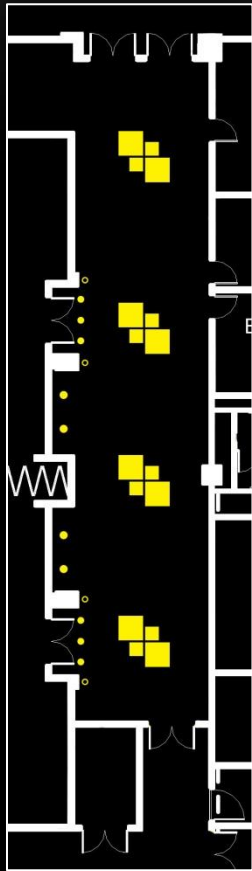
# PLAYER'S LOUNGE



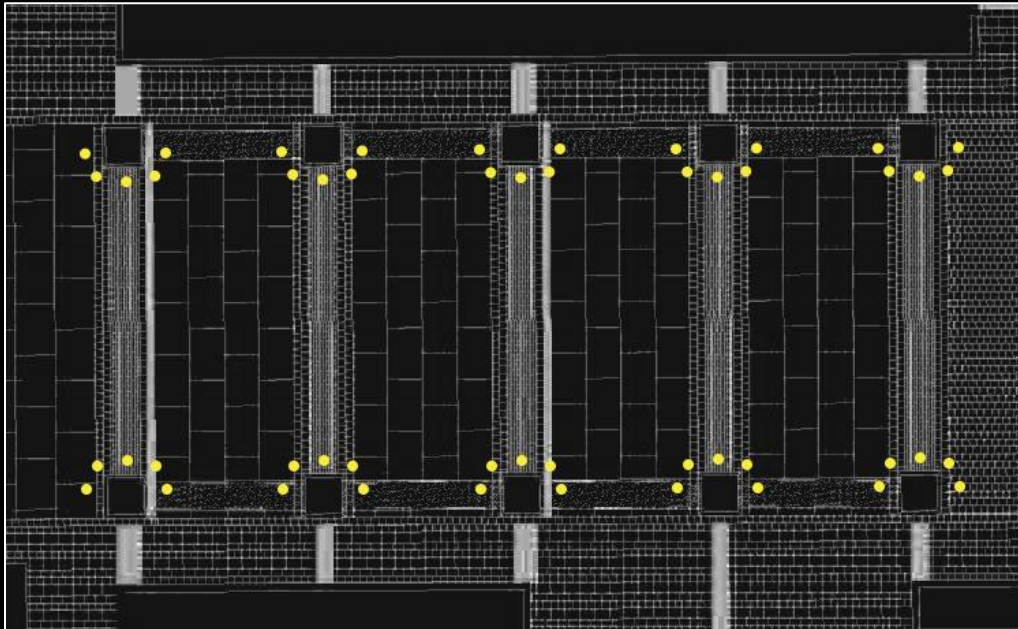
# PLAYER'S LOUNGE



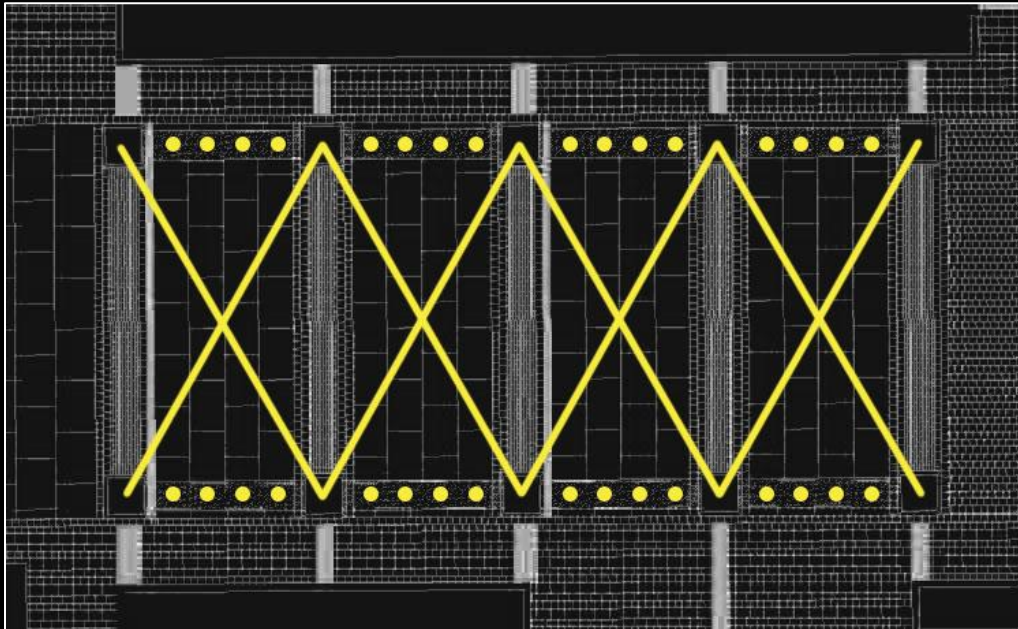
# PRE-FUNCTION



# OUTDOOR PLAZA



# OUTDOOR PLAZA



# OUTDOOR PLAZA

