

CASINO GOLD

Brad Robertson

Technical Report 3

THE BUILDING

- Size: 309,450
- Levels: 3
- Approximate Cost: \$400 Million
- Project Team
 - Executive Architect: ka
 - Design/Interiors Architect: Friedmutter Group
 - Construction Manager: Whiting-Turner
 - Structural Engineer: Carroll Engineering, Inc.
 - MEPT Engineer: JBA Consulting Engineers
 - Lighting Design: The Lighting Practice

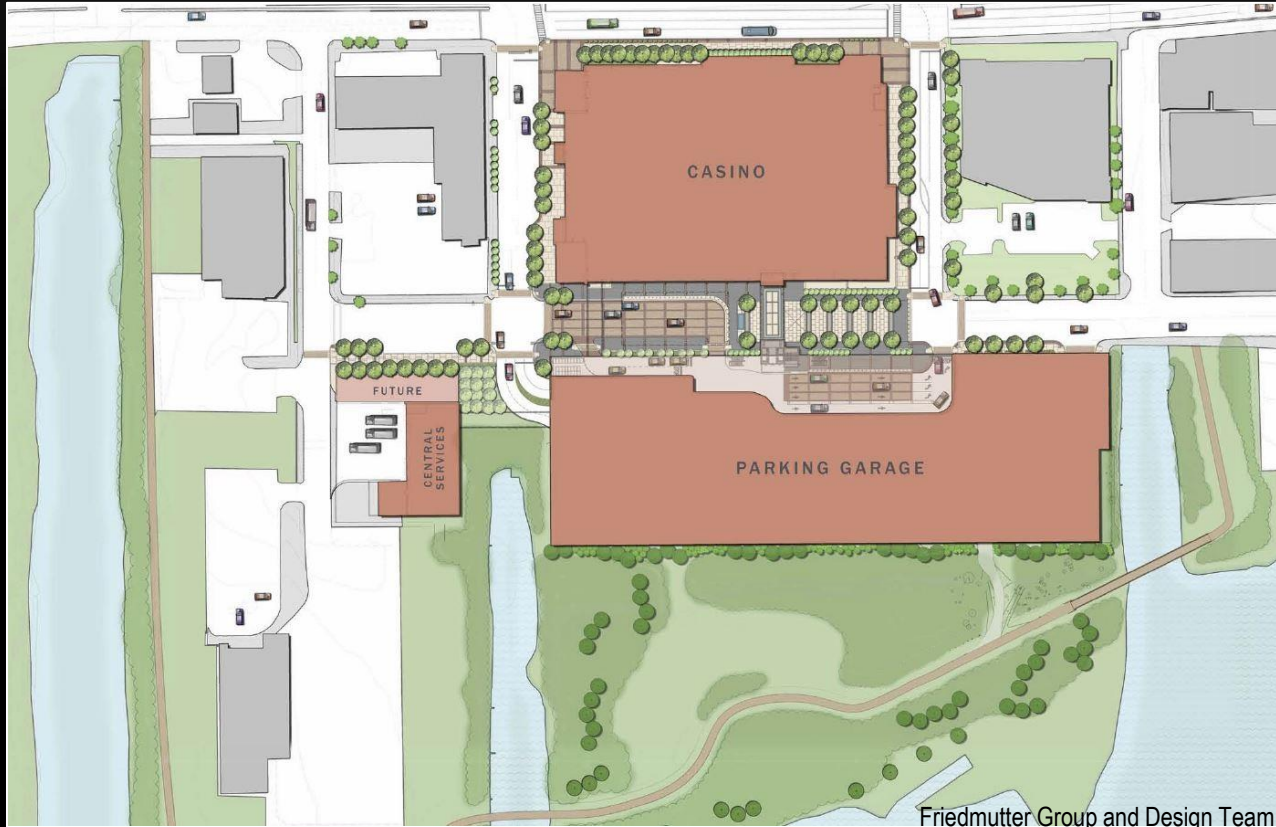


Friedmutter Group and Design Team

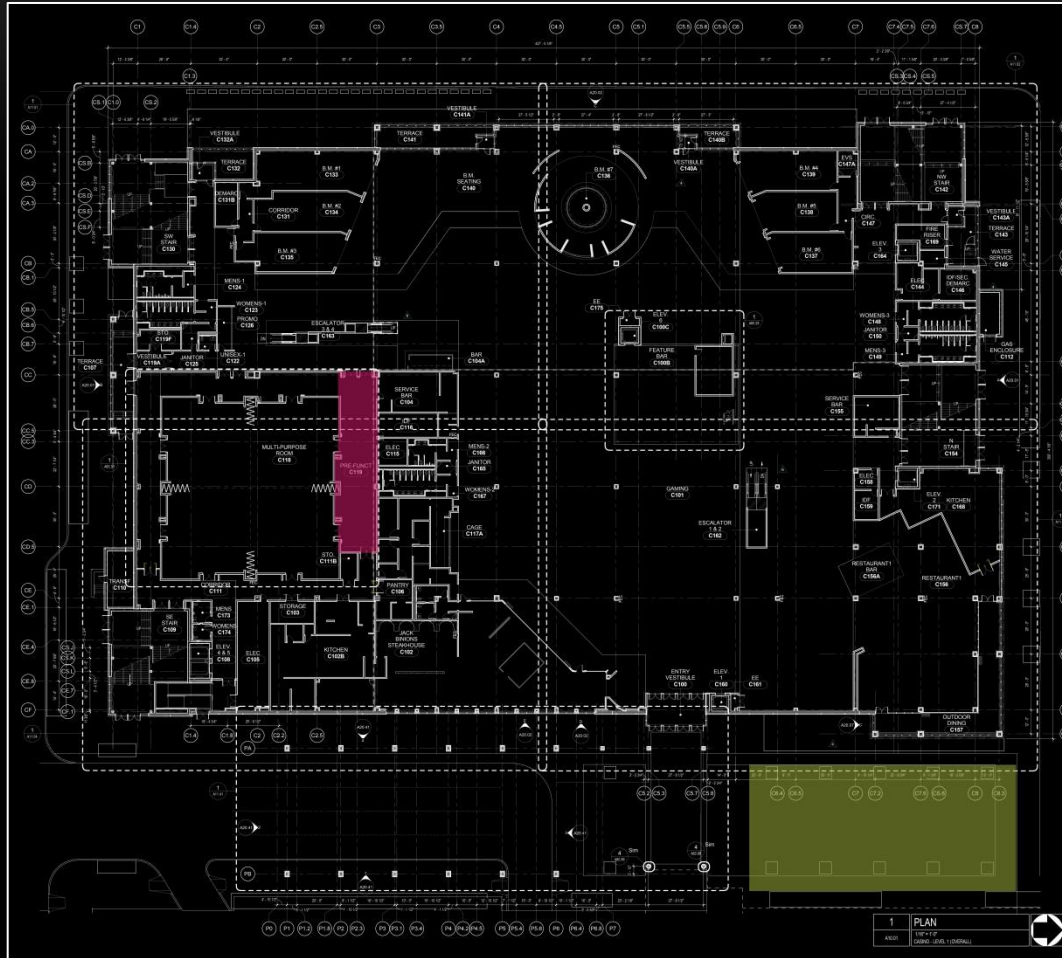


Friedmutter Group and Design Team

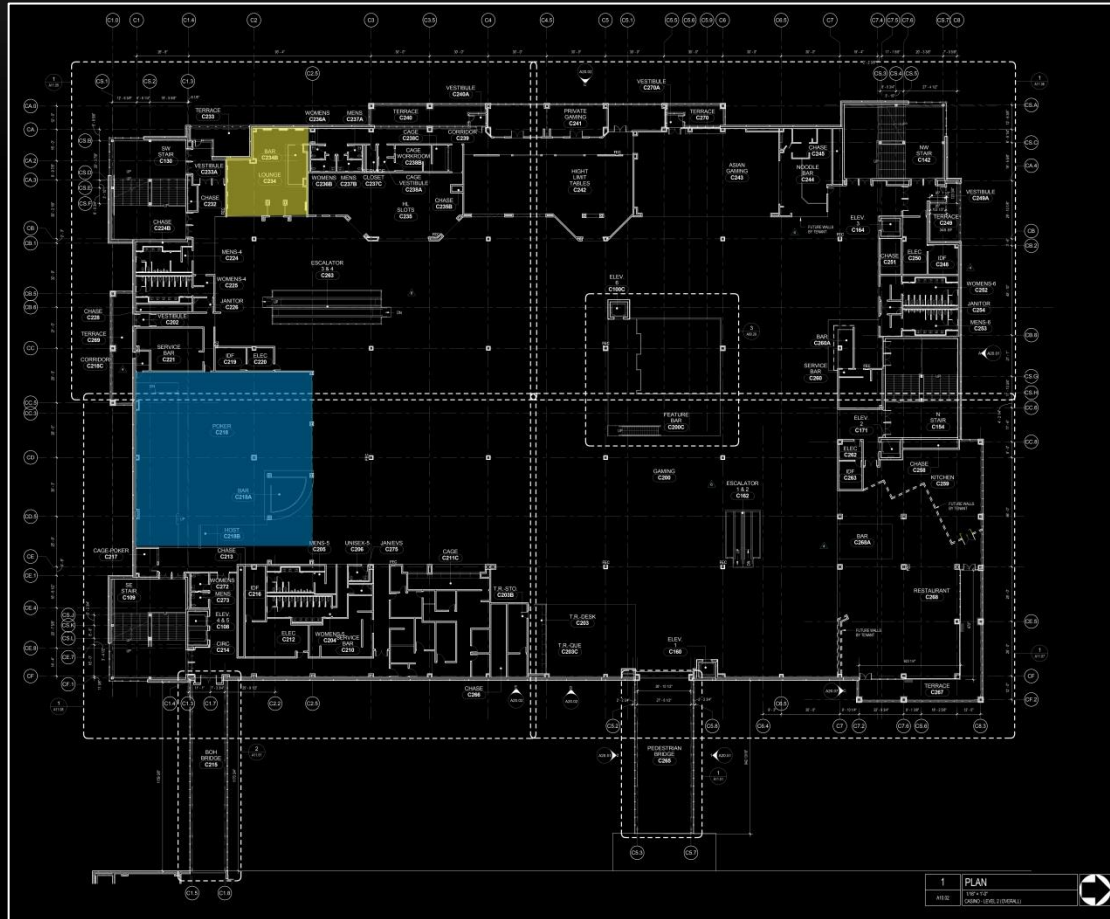
LAYOUT



LEVEL 1



LEVEL 2



CONNECTING WITH PEOPLE



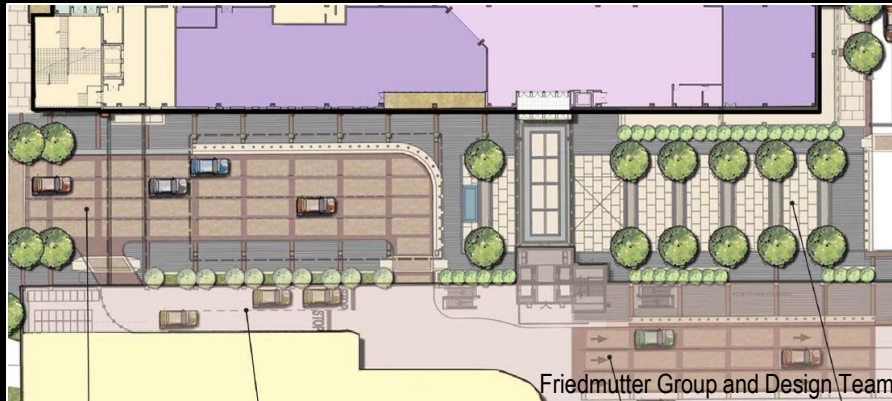
<http://online-free-casino-games.blogspot.com>

OUTDOOR PLAZA

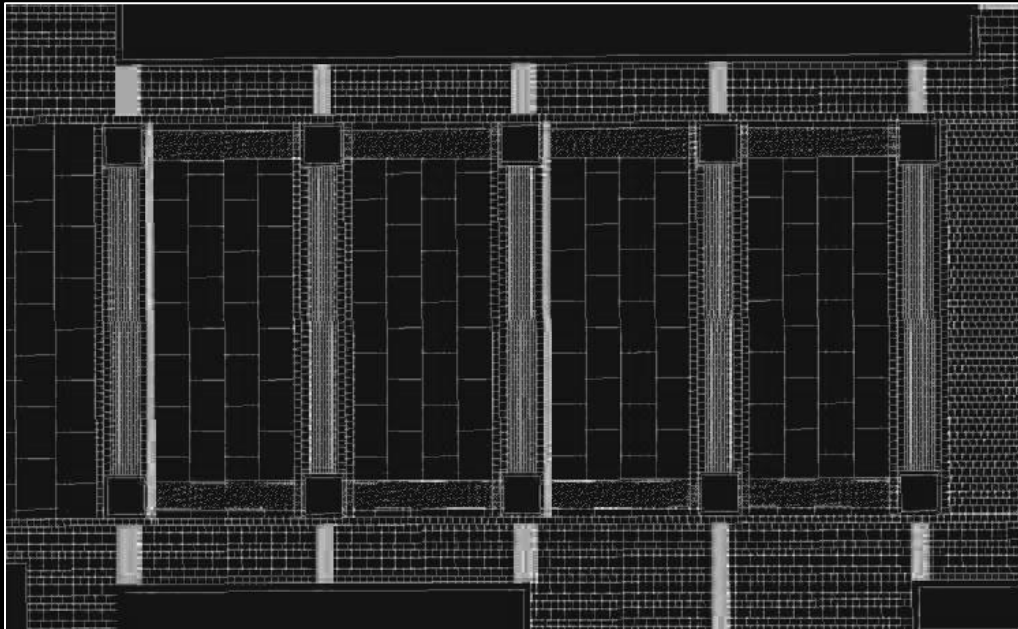


Design Criteria and Considerations

- Promote safety
- Attract guests
- Guide to casino entrance
- $E_{h,avg} = 1fc$
- $E_{v,avg} = 0.5fc$

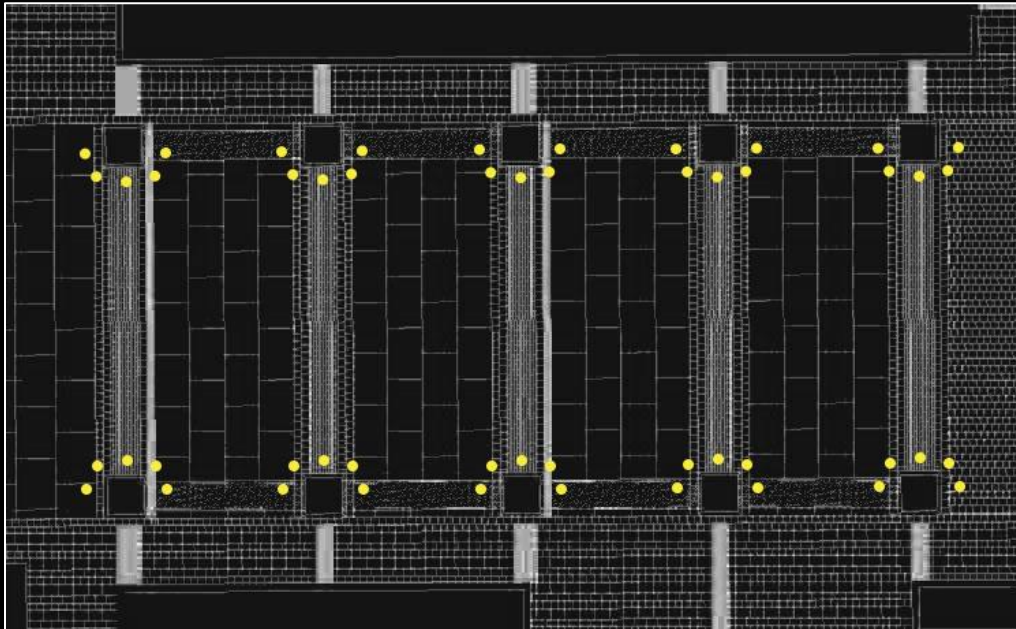


DESIGN 1



Plan View

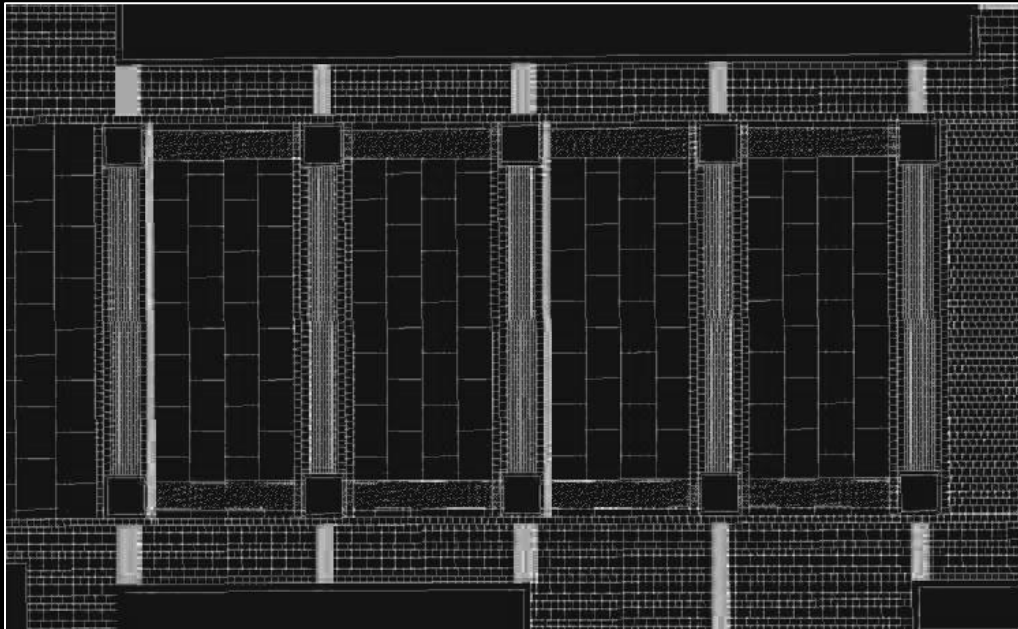
DESIGN 1



Plan View

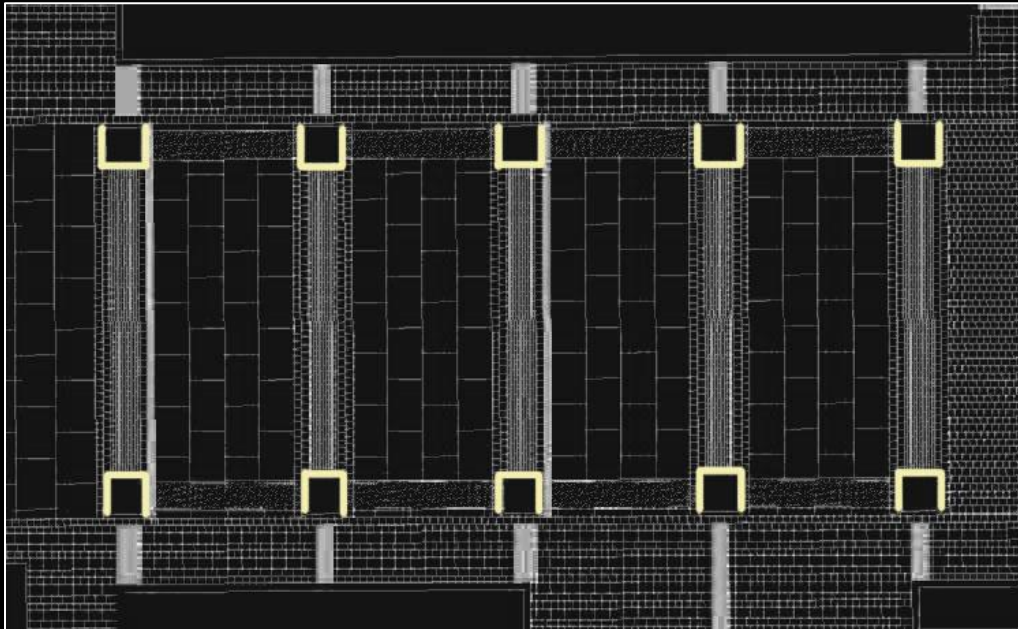


DESIGN 2



Plan View

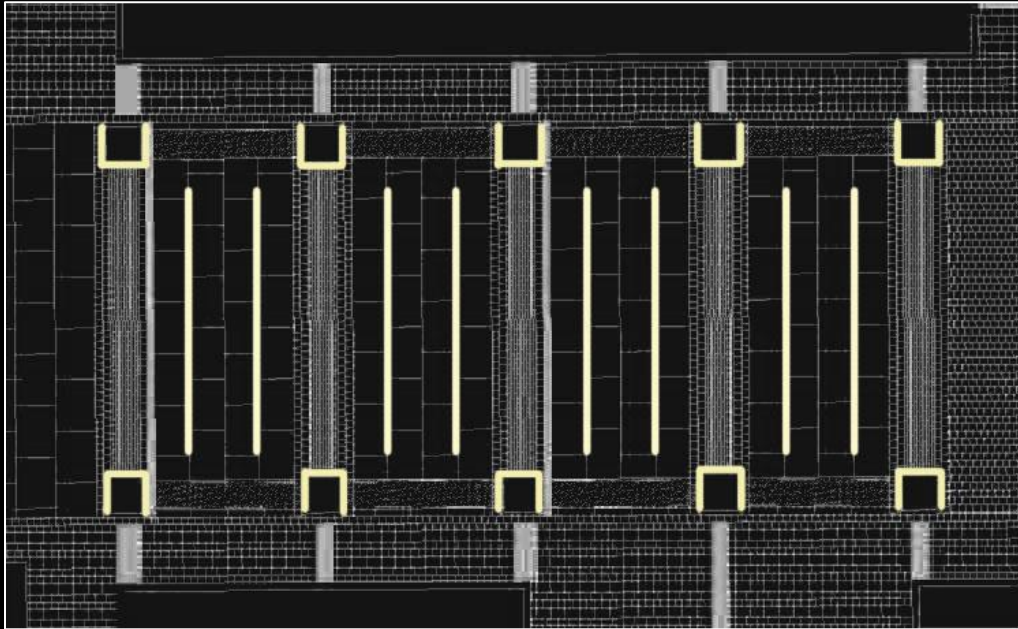
DESIGN 2



Plan View



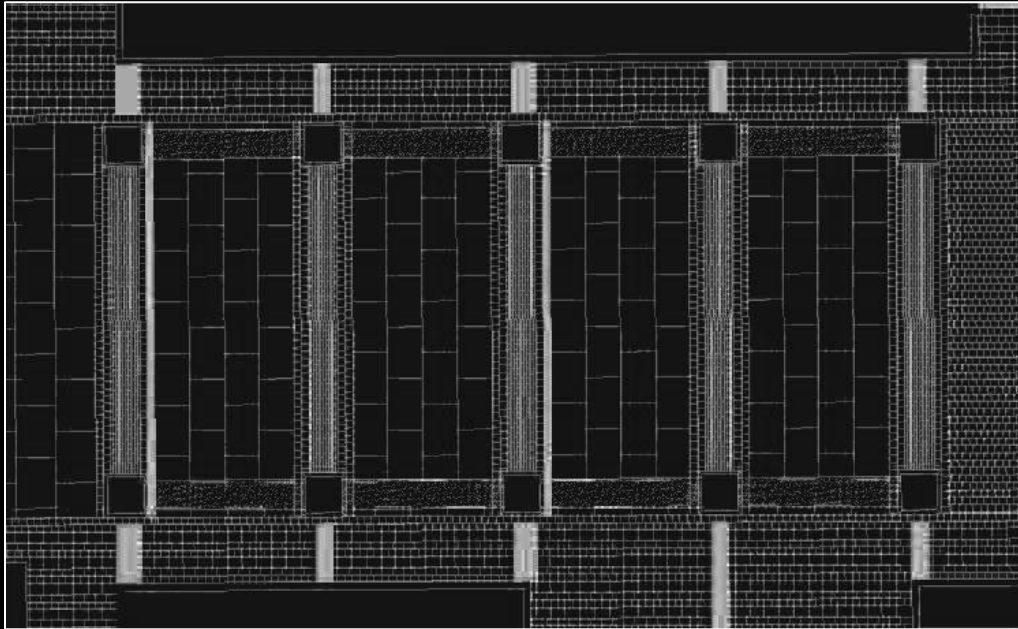
DESIGN 2



Plan View

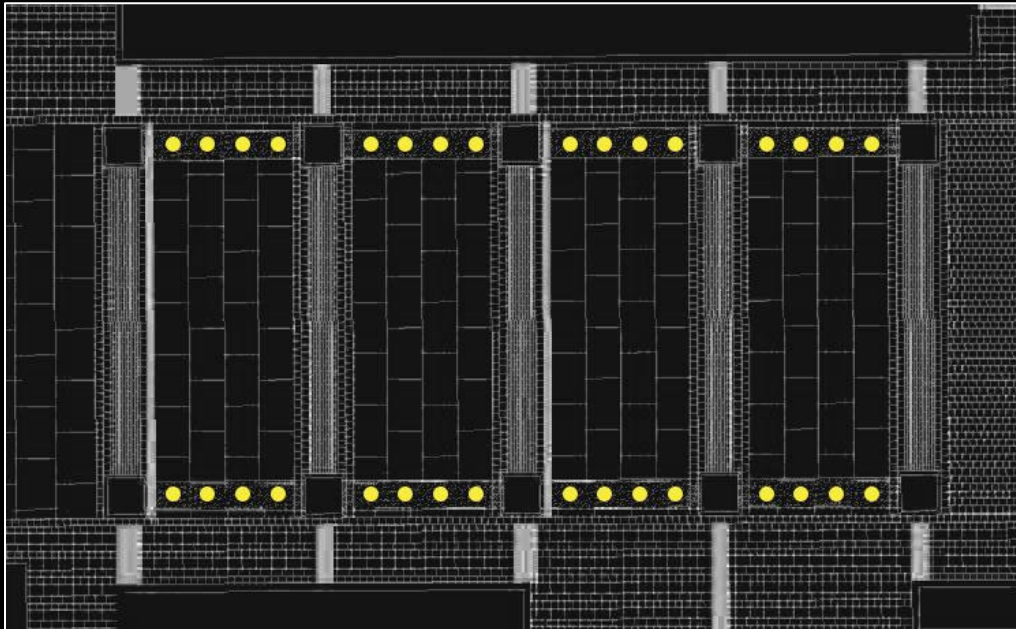


DESIGN 3



Plan View

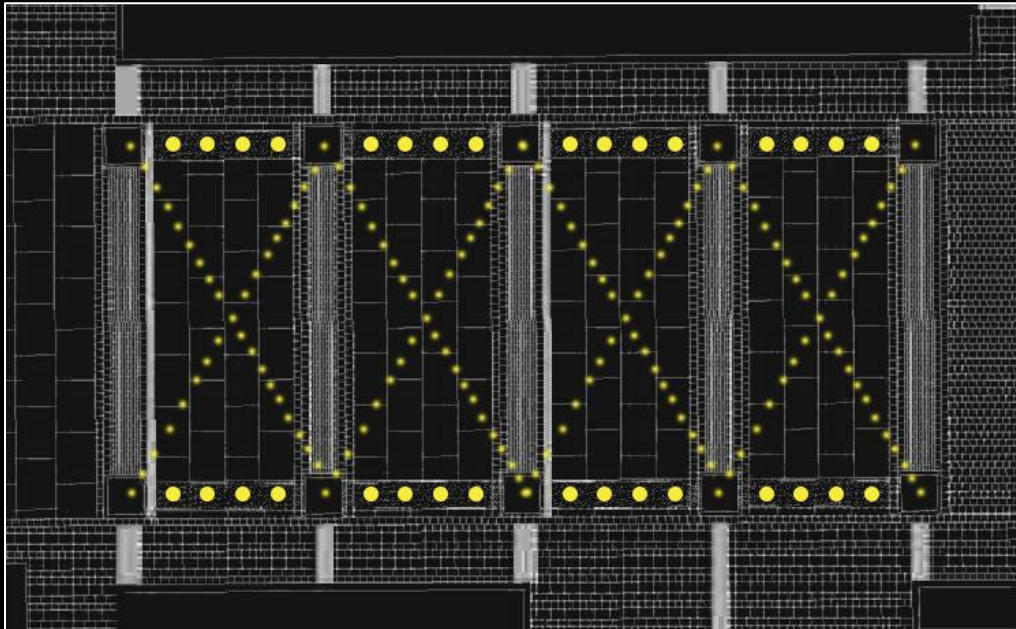
DESIGN 3



Plan View



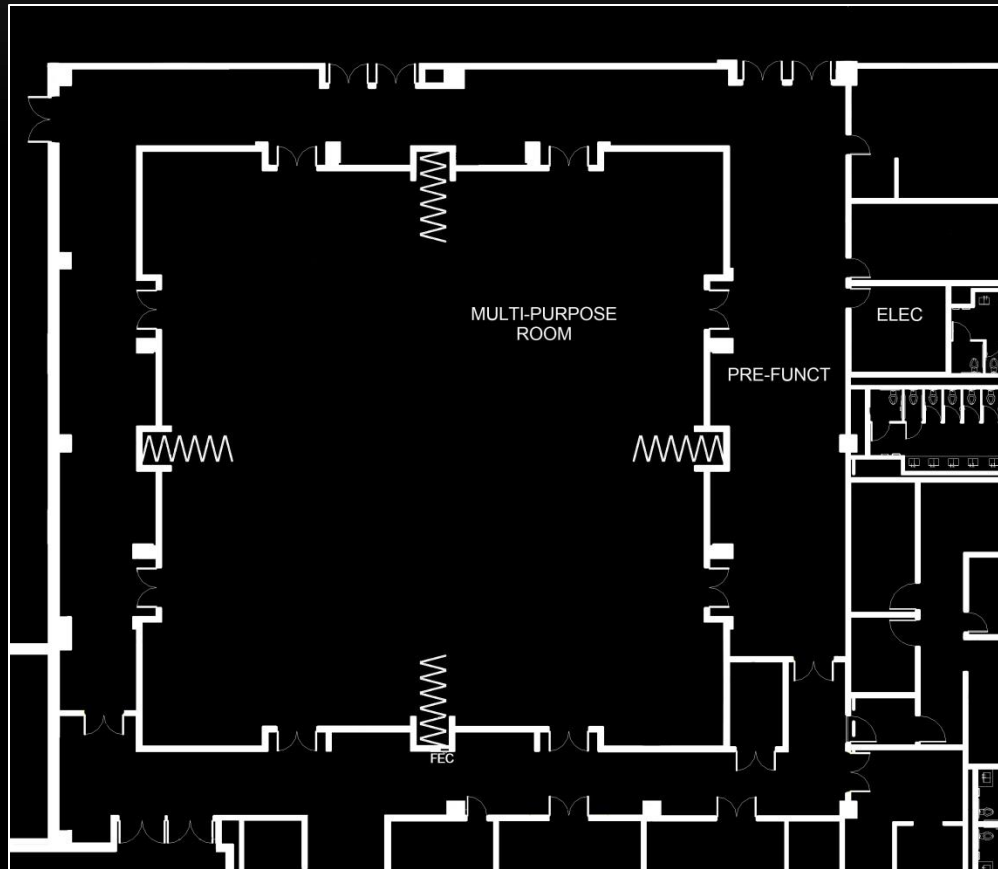
DESIGN 3



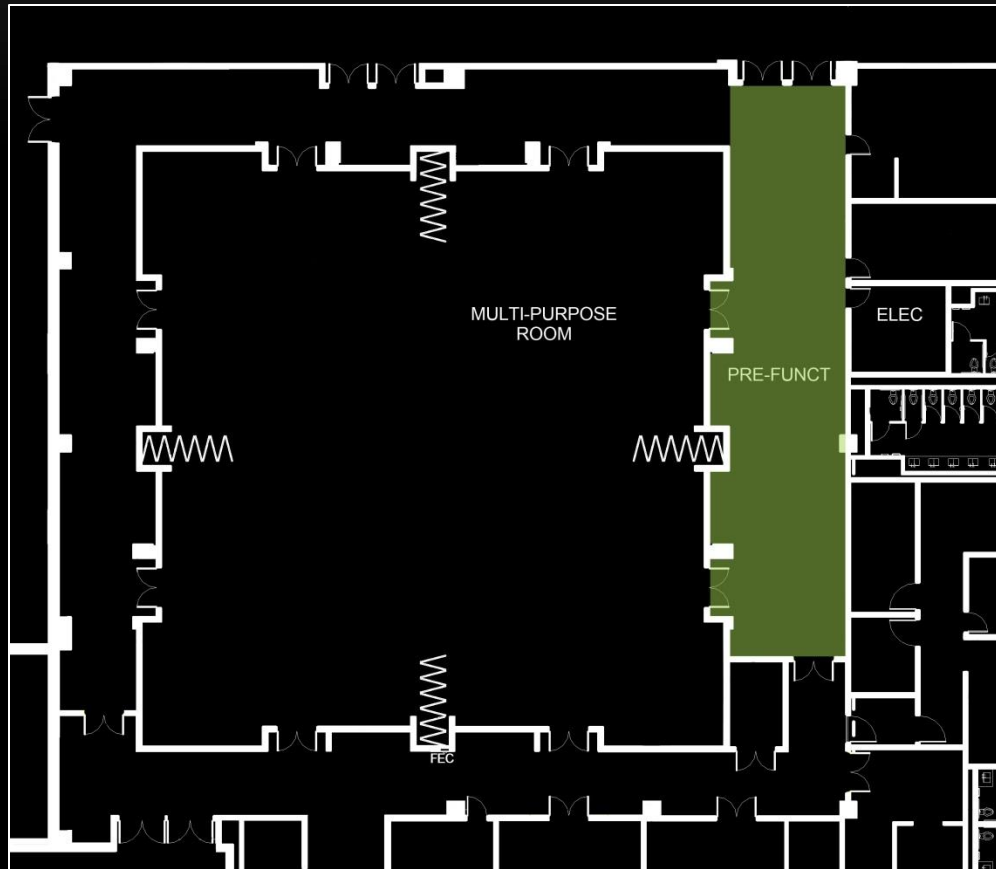
Plan View



PRE-FUNCTION



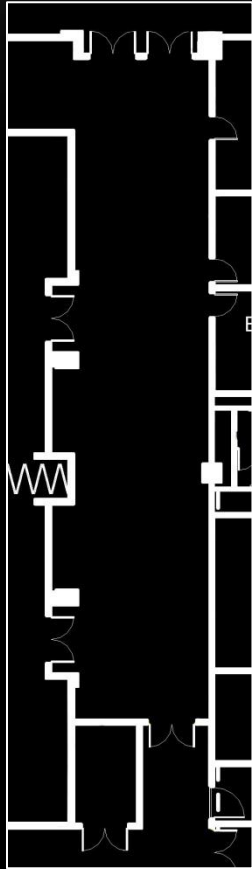
PRE-FUNCTION



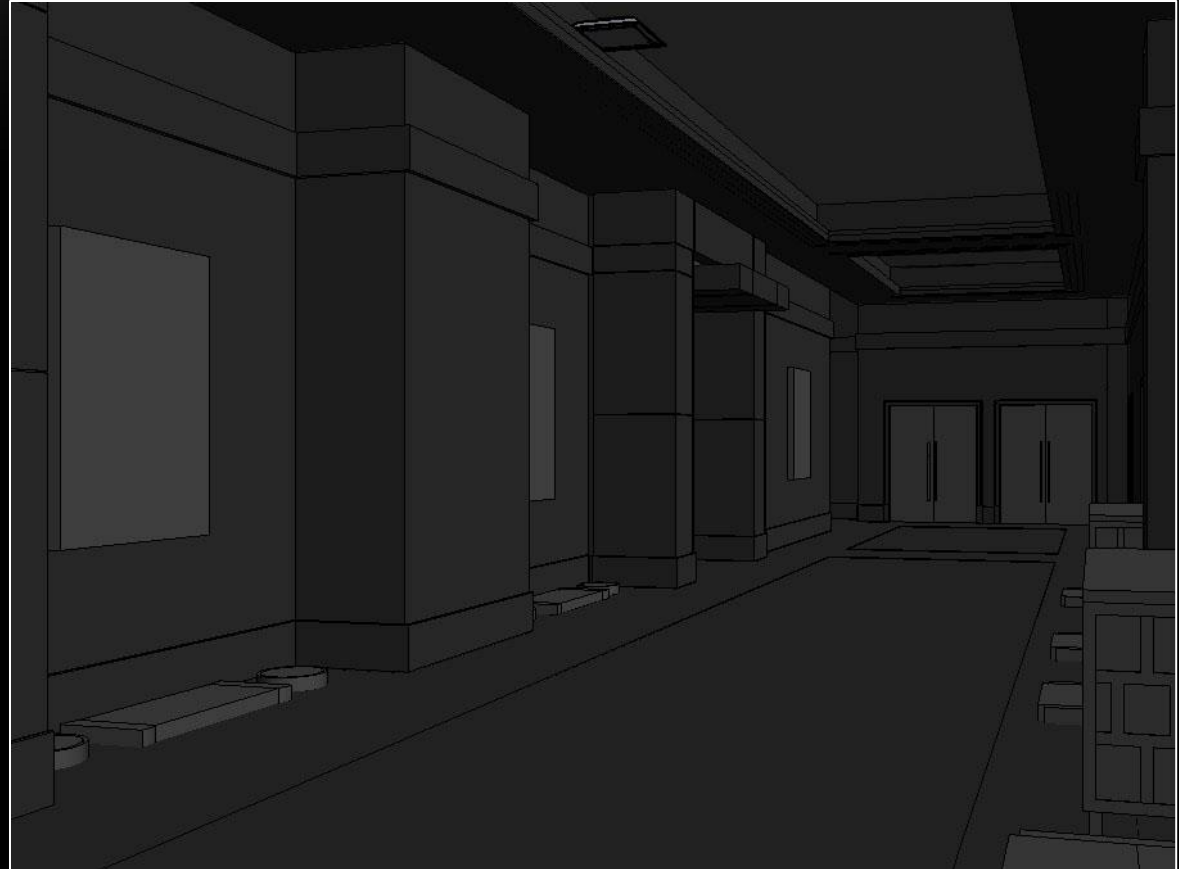
Design Criteria and Considerations

- Promote impression of spaciousness
- Guide guests
- Open, flexible
- $E_{h,avg} = 50fc$ (high activity)
- $E_{h,avg} = 10fc$ (medium activity)

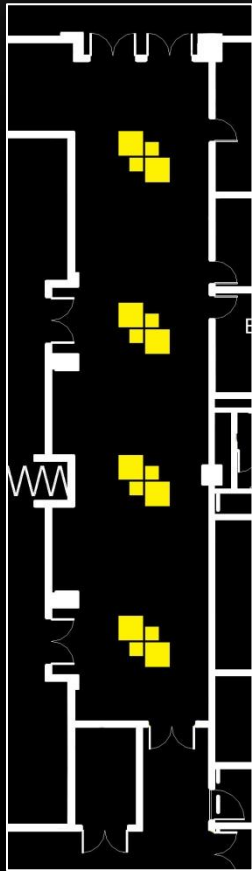
PRE-FUNCTION



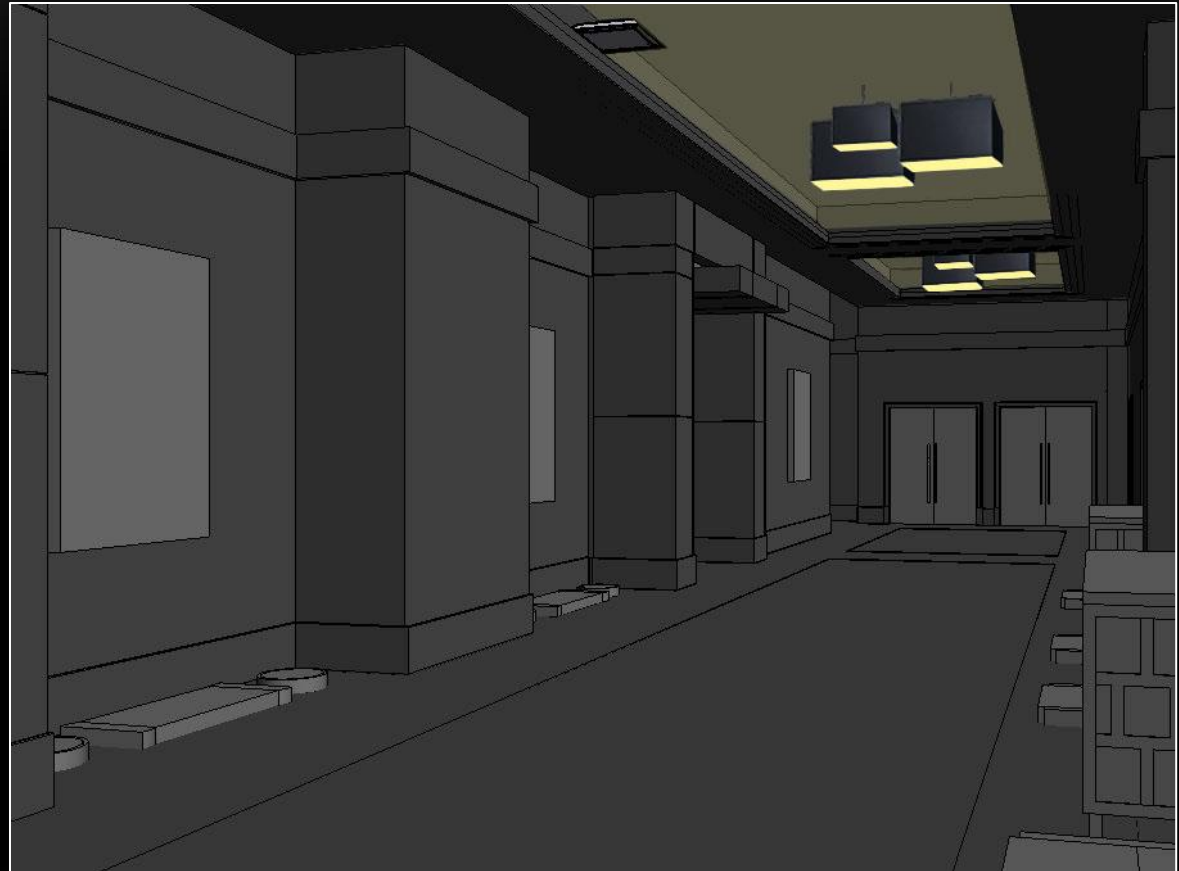
Plan View



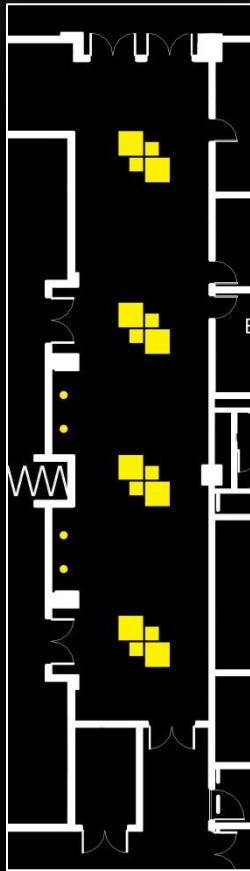
PRE-FUNCTION



Plan View



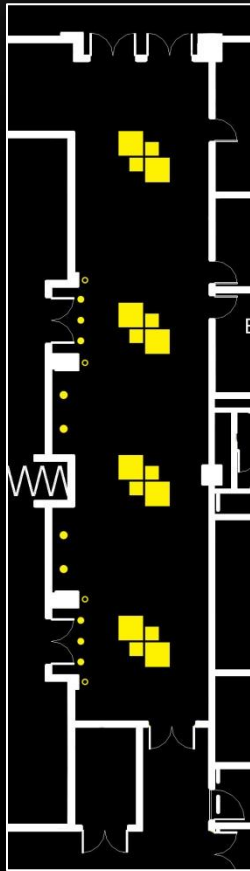
PRE-FUNCTION



Plan View



PRE-FUNCTION



Plan View



POKER ROOM



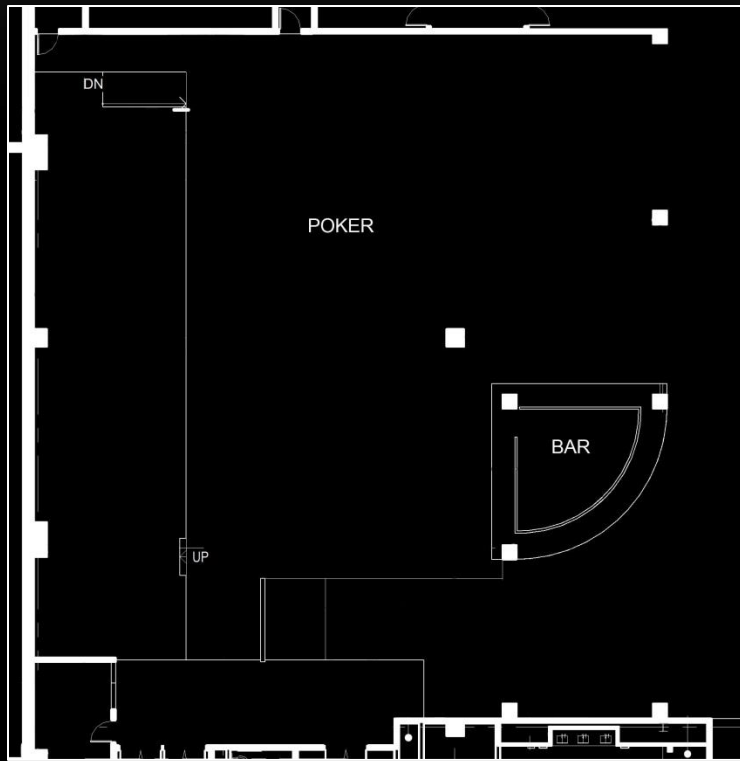
POKER ROOM



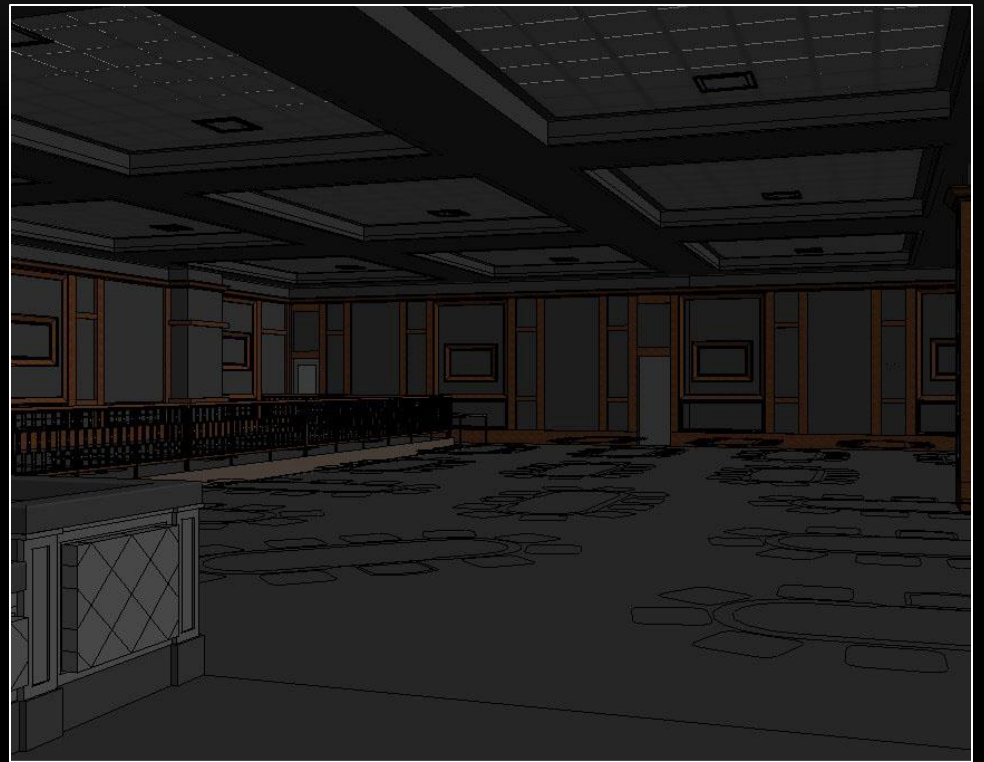
Design Criteria and Considerations:

- Workspace for players
- Ceiling structure
- Avoid glare
- $E_{h,avg} = 50fc$

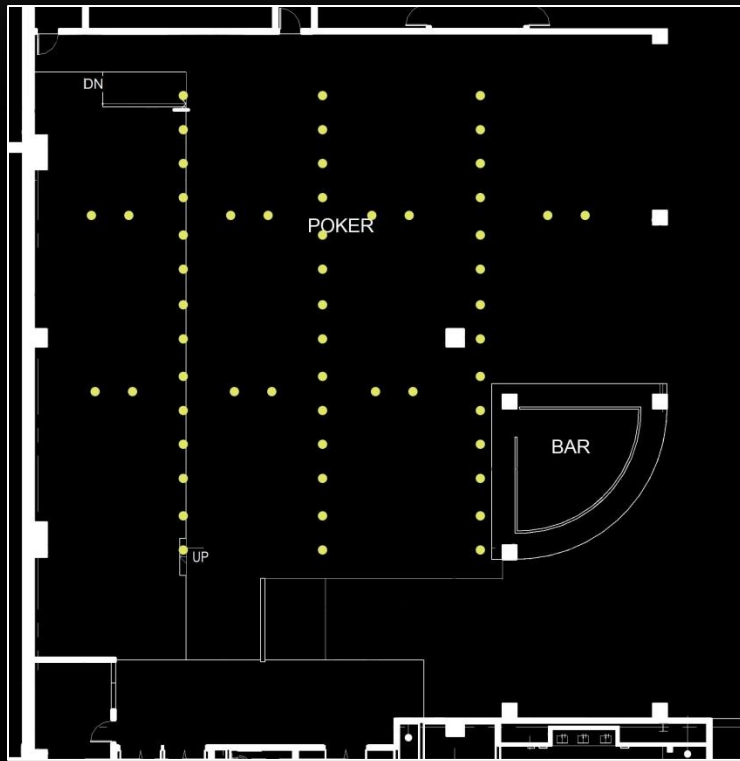
POKER ROOM



Plan View



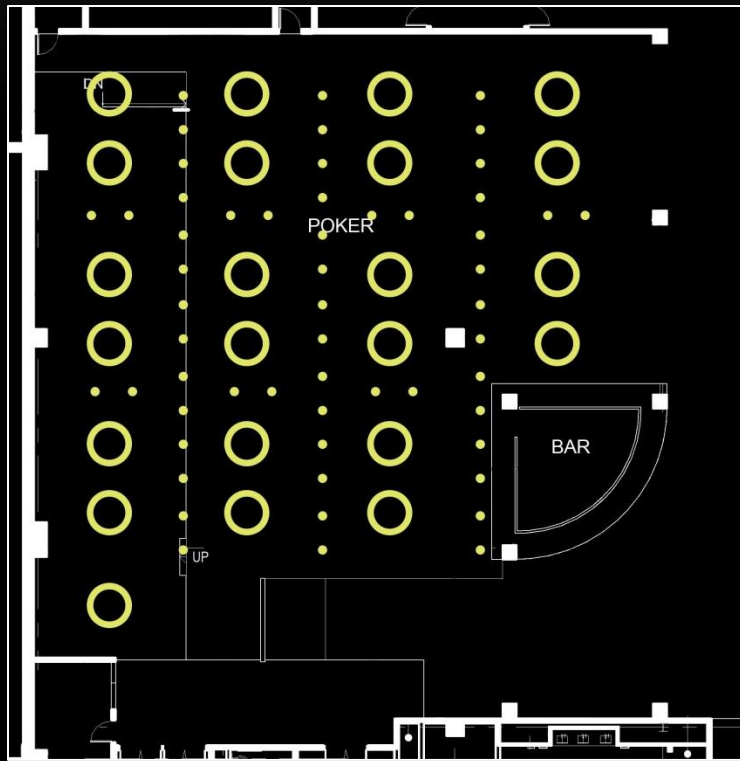
POKER ROOM



Plan View



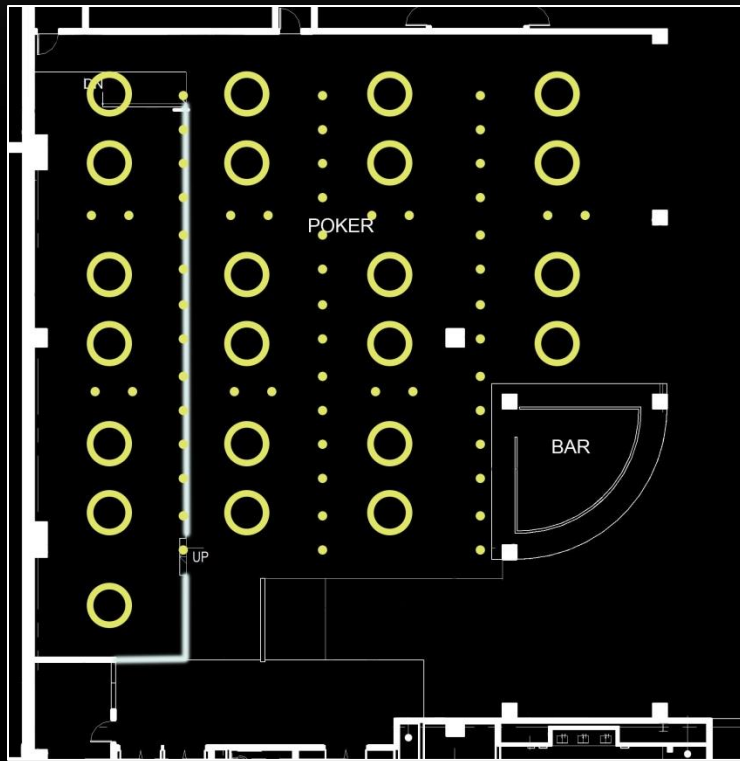
POKER ROOM



Plan View



POKER ROOM



Plan View



PLAYER'S LOUNGE



PLAYER'S LOUNGE



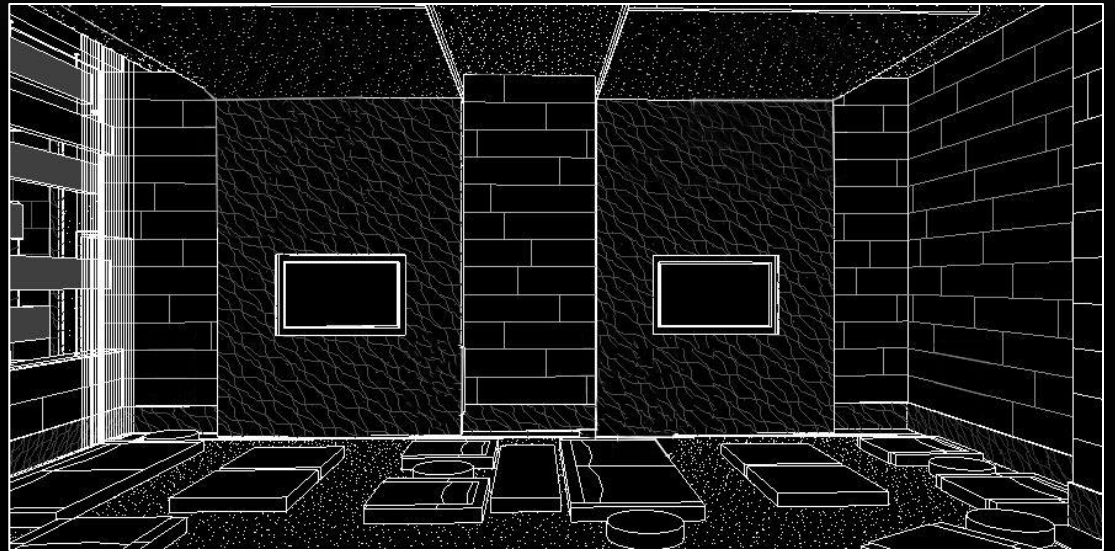
Design Criteria and Considerations

- Bring people together
- Highlight the bar
- Integrate architecture
- $E_{h,avg} = 10fc$ (lounge area)
- $E_{h,avg} = 5fc$ (back bar)

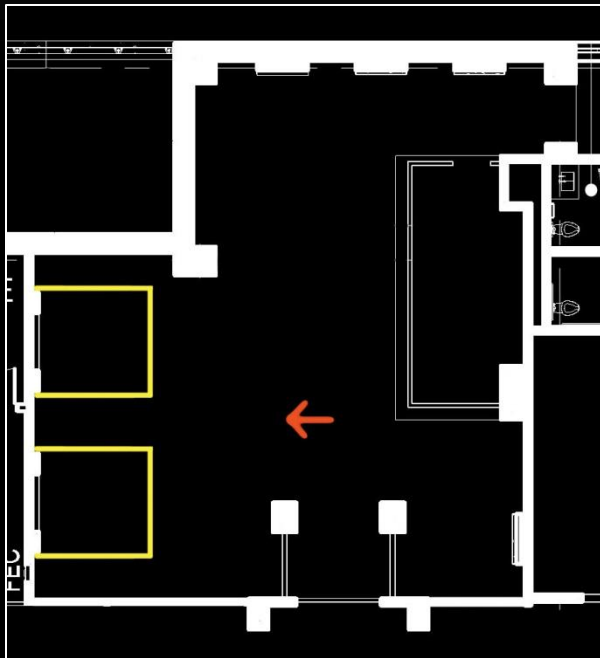
PLAYER'S LOUNGE



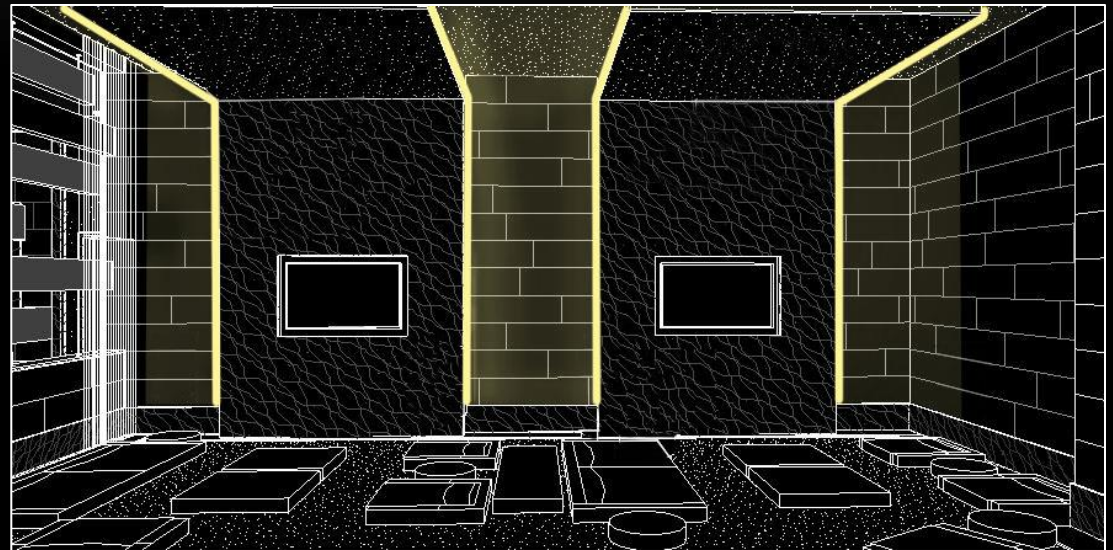
Plan View



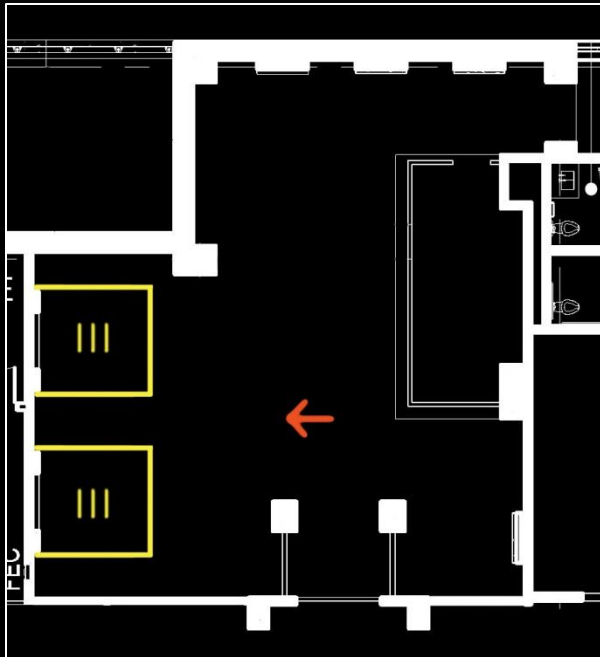
PLAYER'S LOUNGE



Plan View



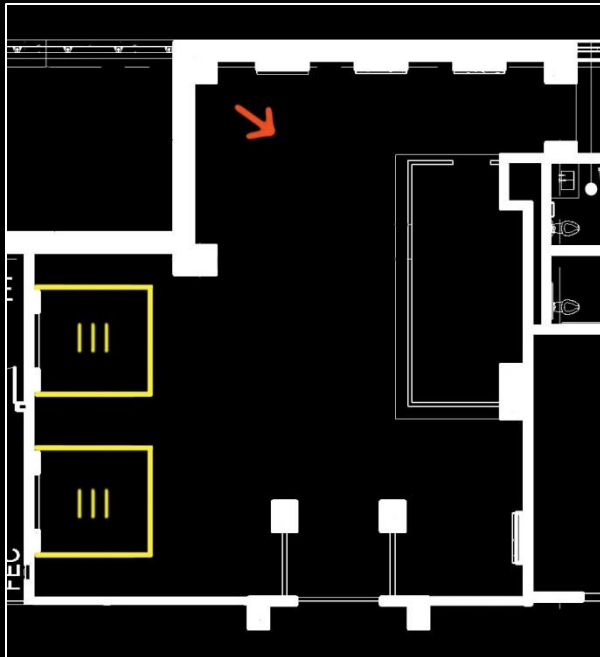
PLAYER'S LOUNGE



Plan View



PLAYER'S LOUNGE

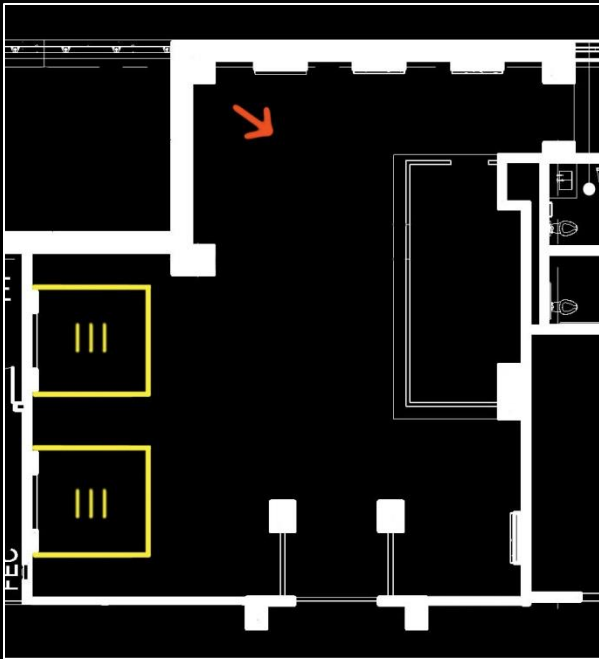


Plan View

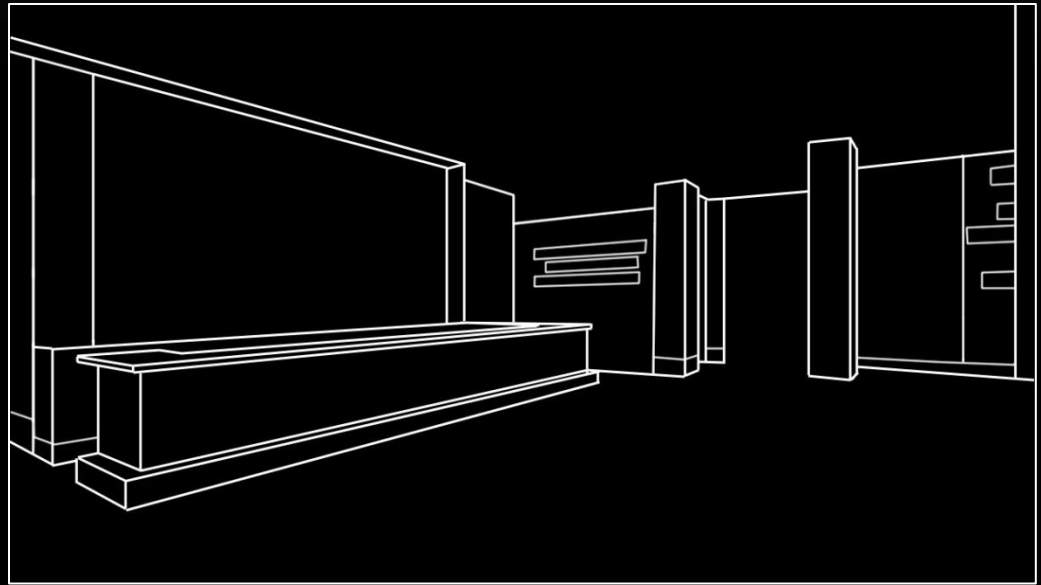


Friedmutter Group and Design Team

PLAYER'S LOUNGE



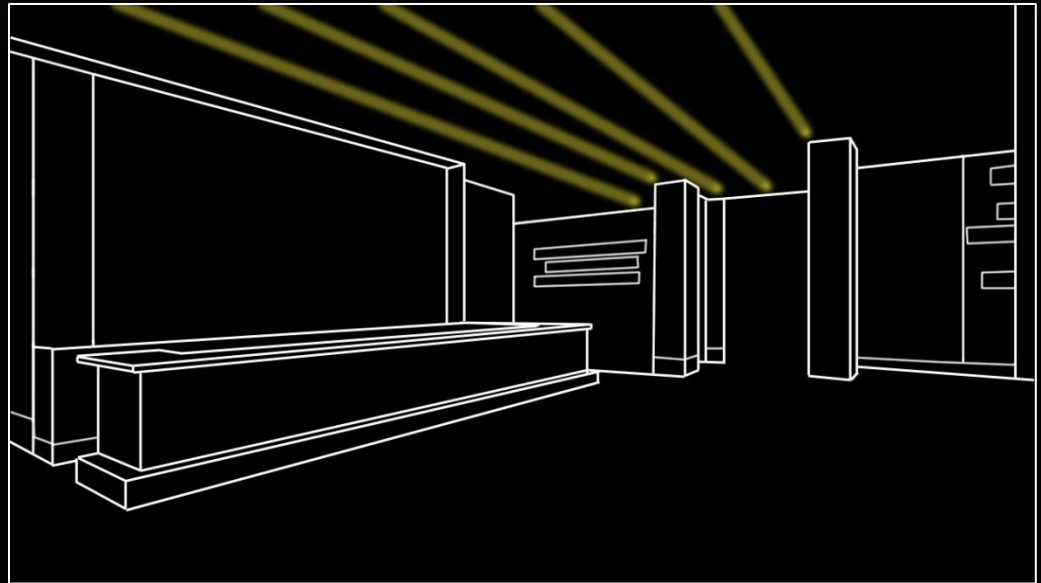
Plan View



PLAYER'S LOUNGE



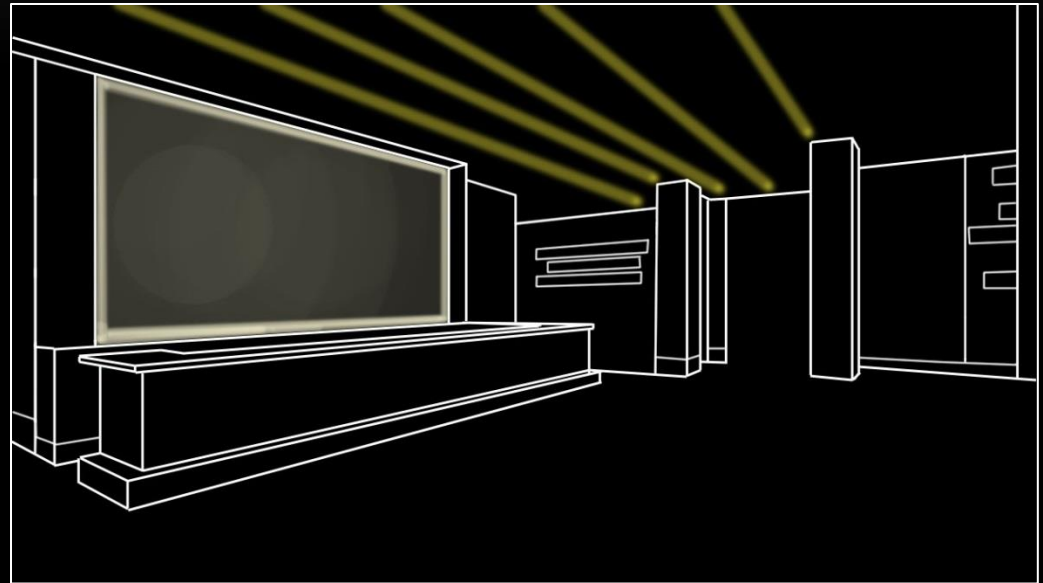
Plan View



PLAYER'S LOUNGE



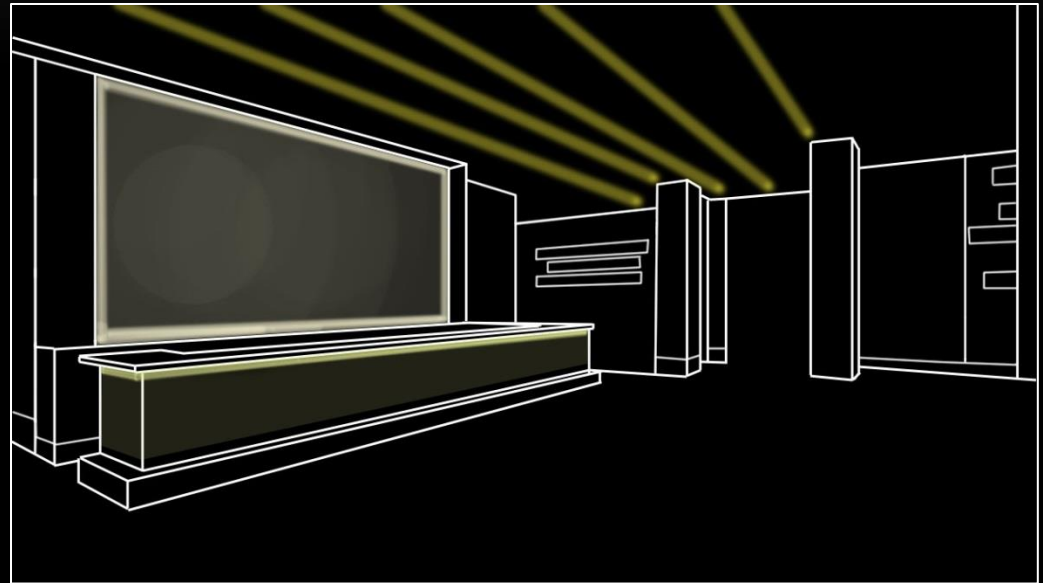
Plan View



PLAYER'S LOUNGE



Plan View



THANK YOU
