

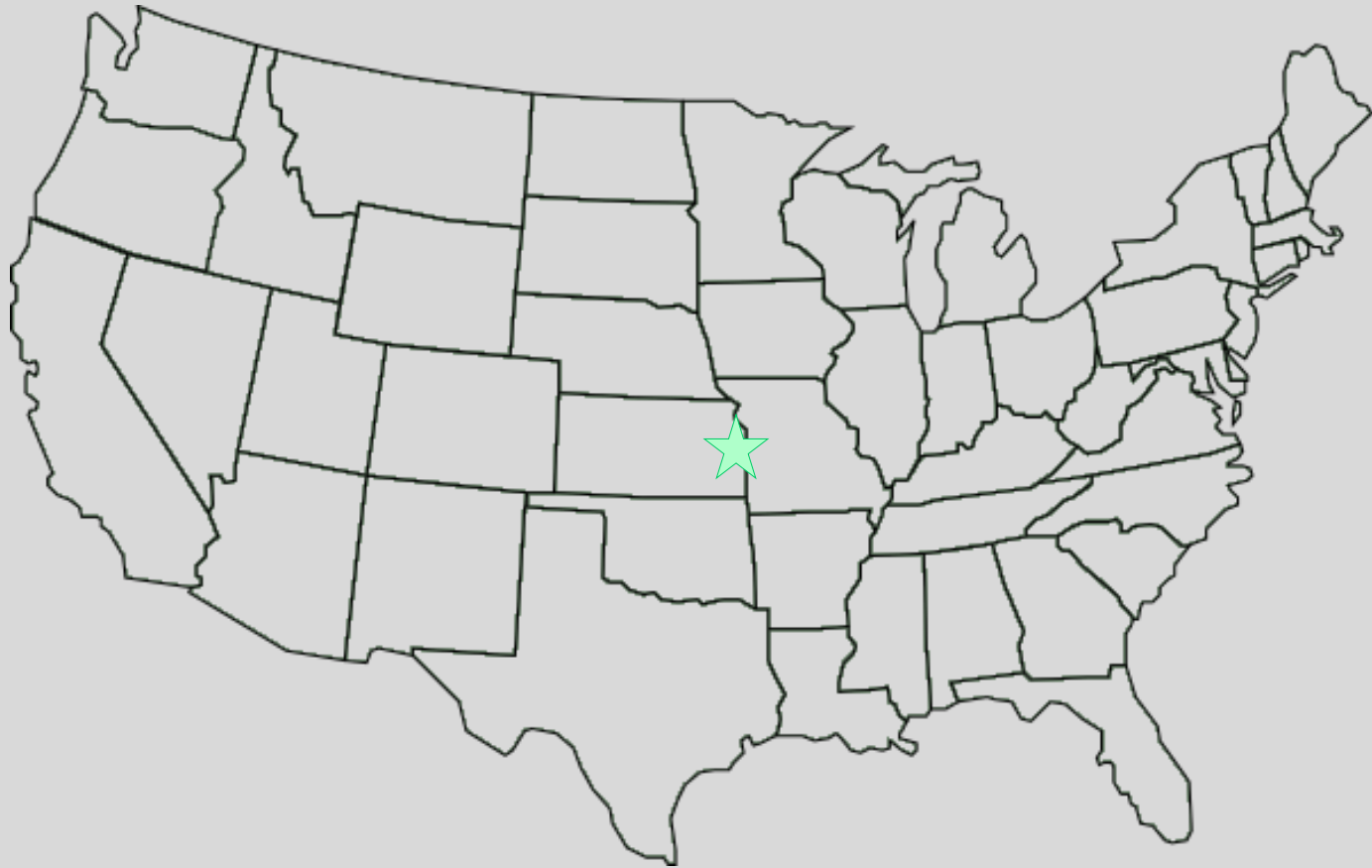
The Nerman Museum of Contemporary Art

Technical Report IVa
Presentation



Jack Risser

Overland Park, Kansas



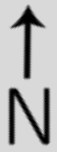
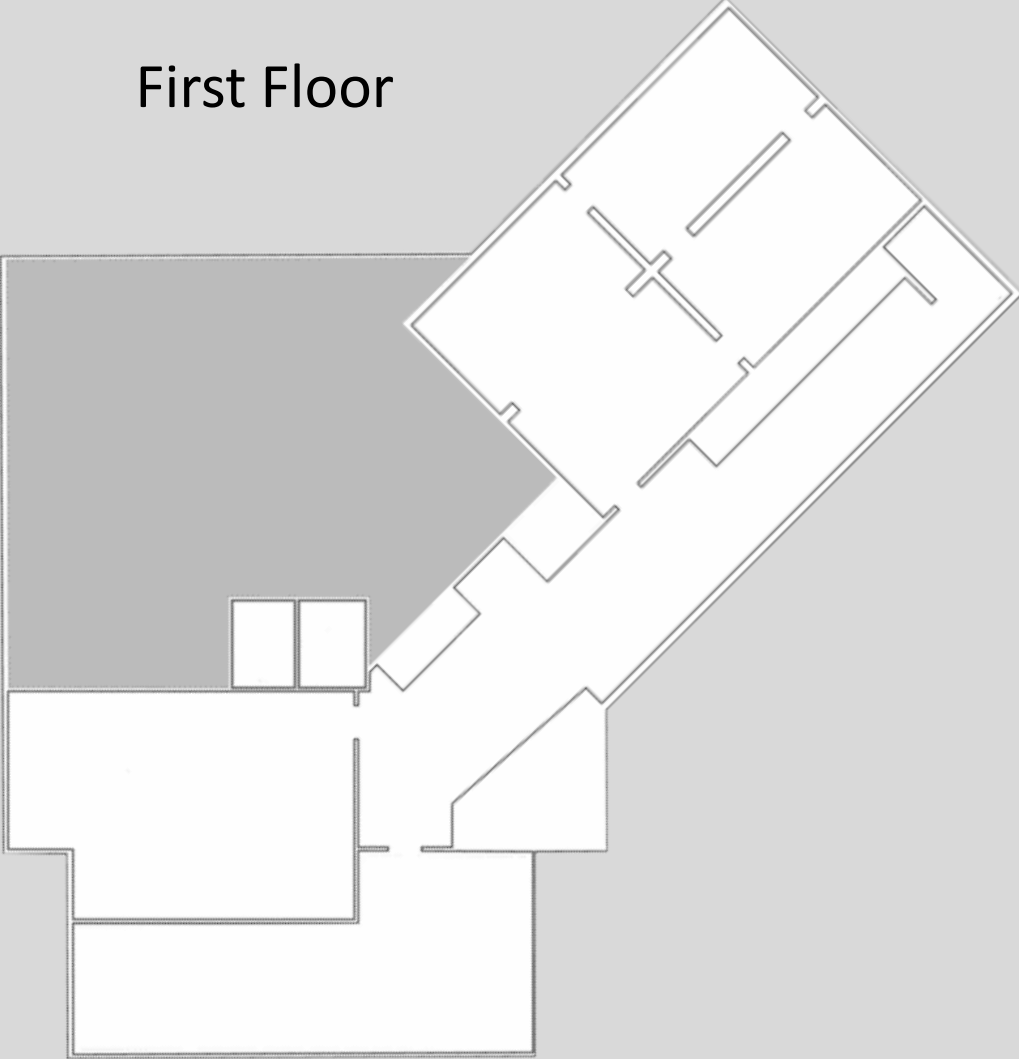
Johnson County Community College



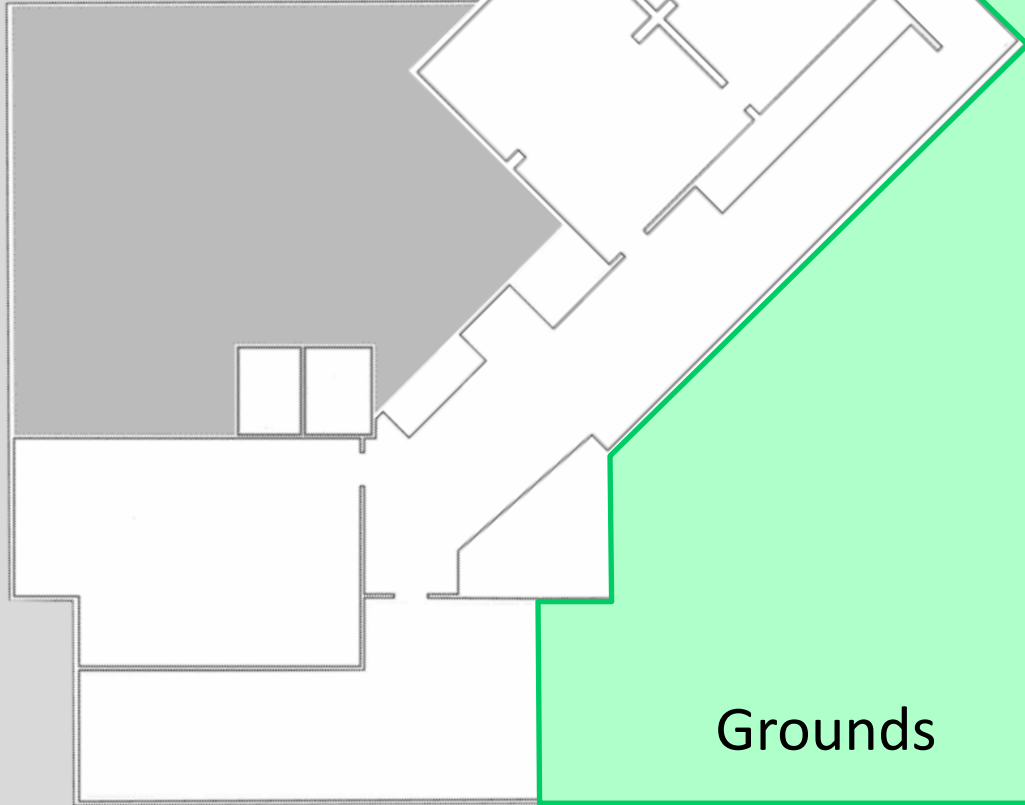
The Nerman Museum of Contemporary Art



First Floor



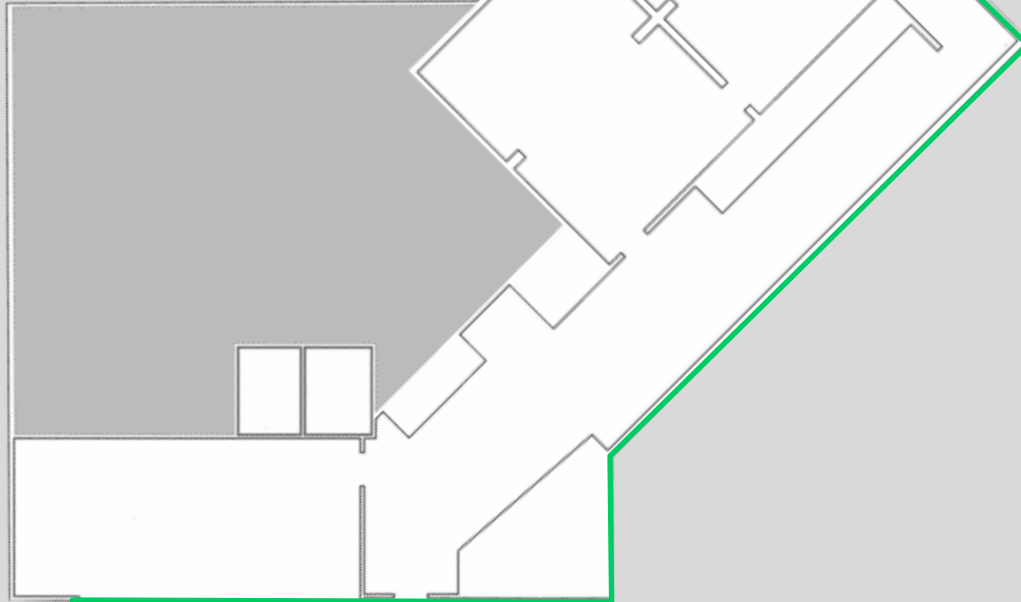
First Floor



Grounds

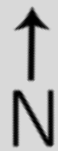


First Floor

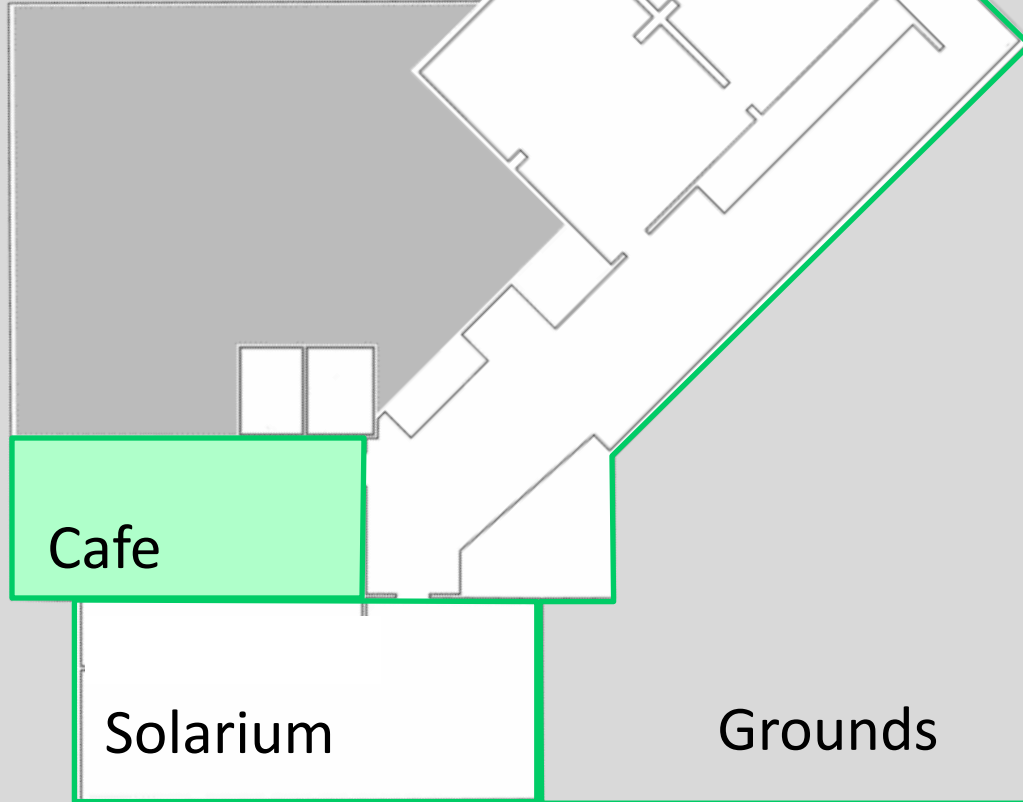


Solarium

Grounds



First Floor



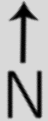
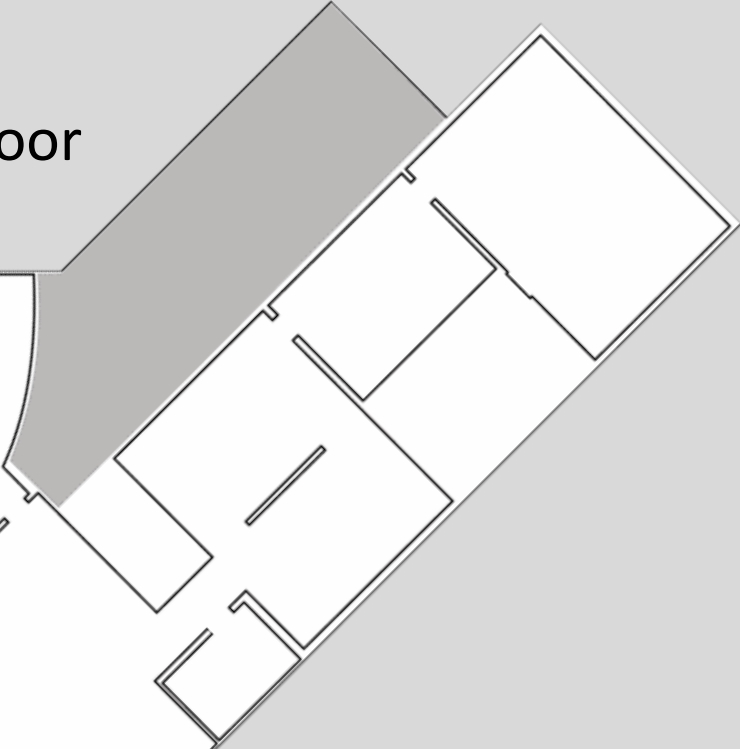
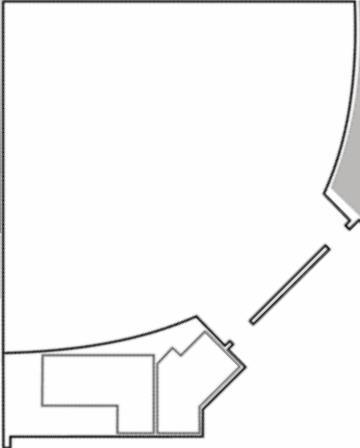
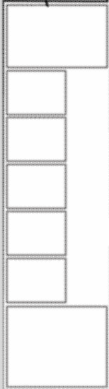
Cafe

Solarium

Grounds

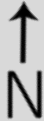
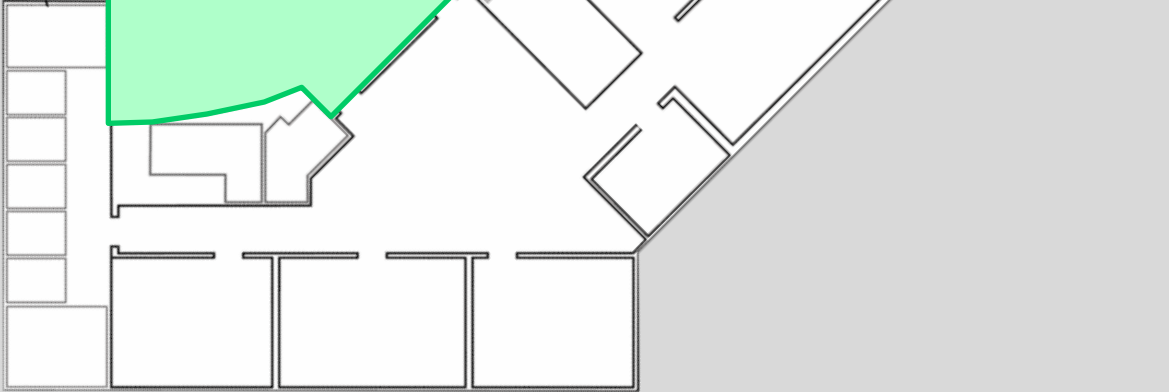


Second Floor



Second Floor

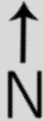
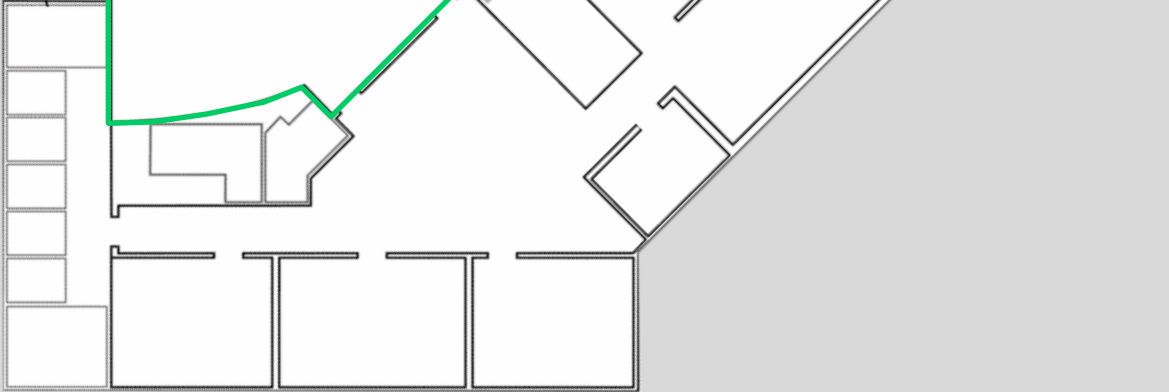
Auditorium



Second Floor

Gallery

Auditorium



Themes & Concept

Architecture:

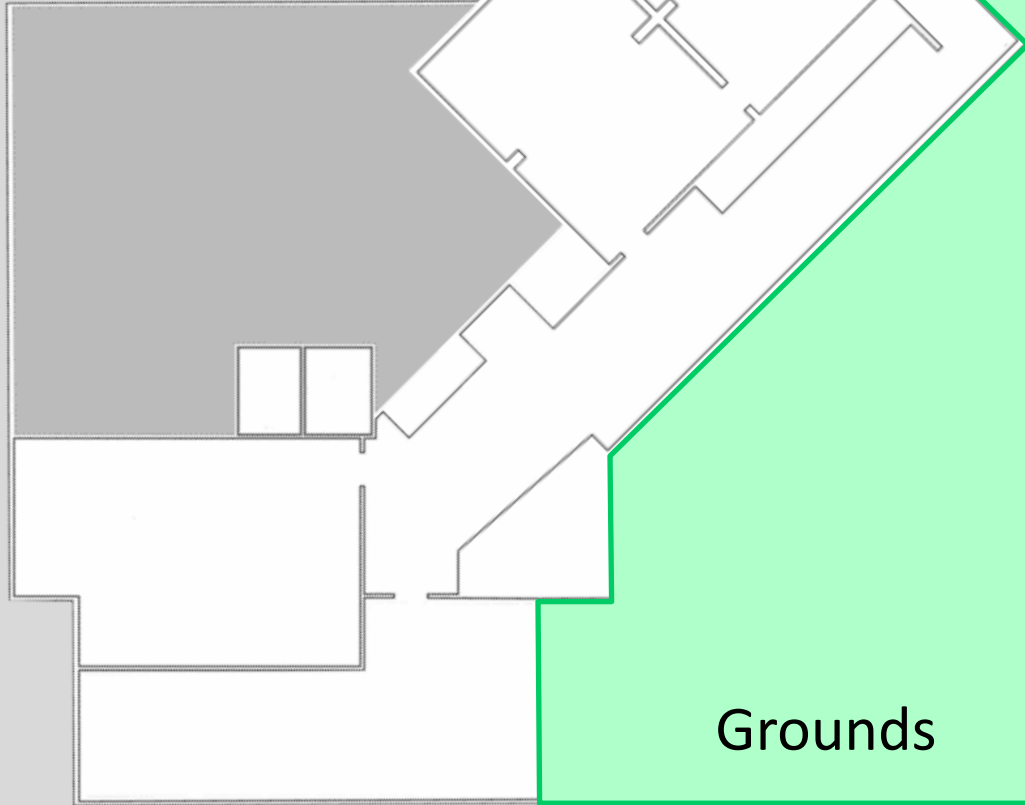
Experiential

Refined Minimalism

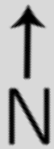
Connection to Nature



First Floor



Grounds







- Orientation
- Association with Architecture
- Response to Environment

$E_h - 3 \text{ lux}$



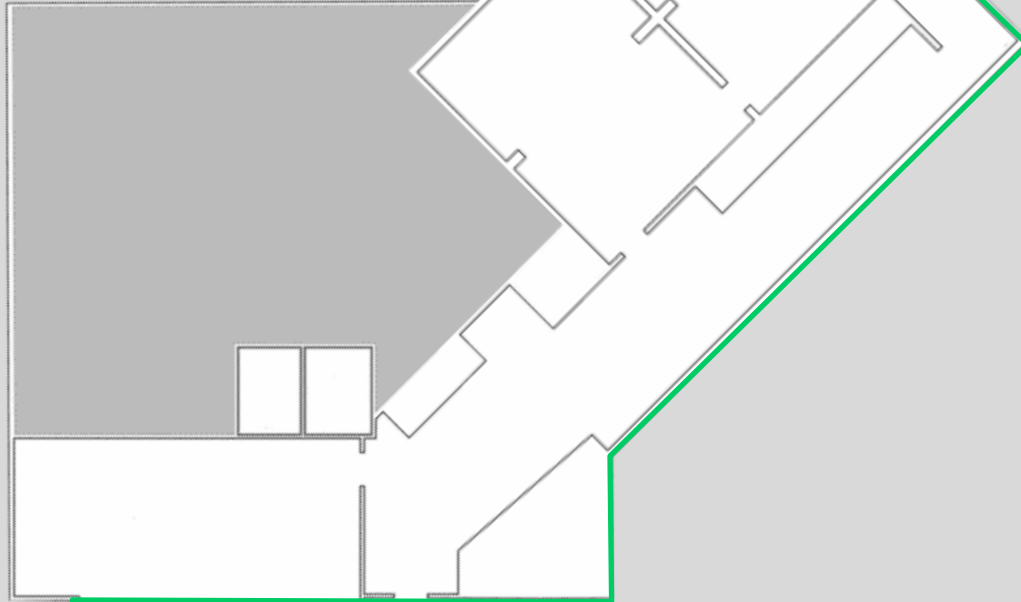




Carlsen Center

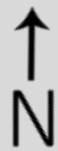


First Floor

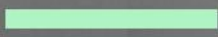


Solarium

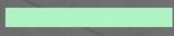
Grounds



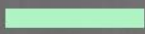




Spaciousness

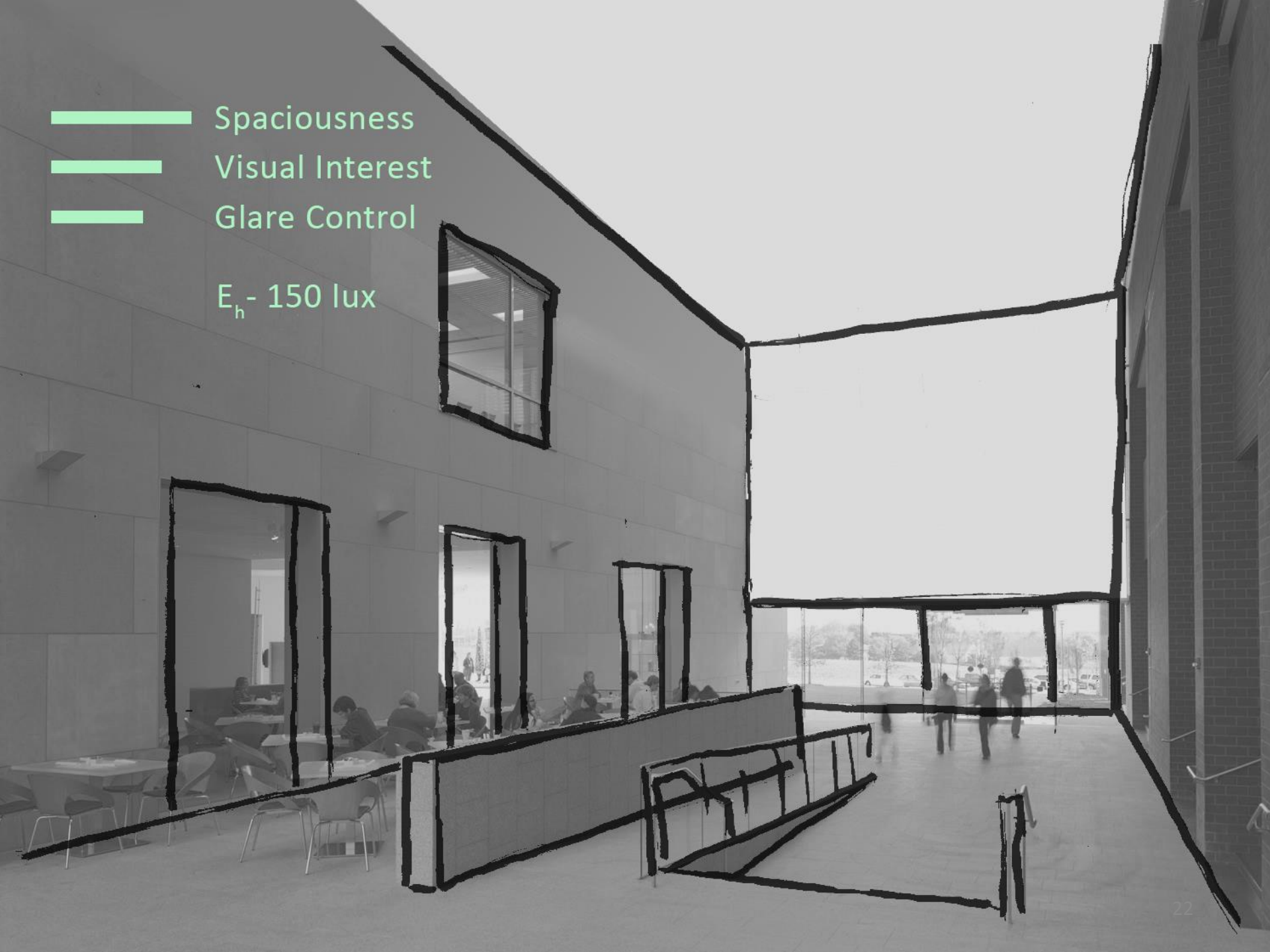


Visual Interest

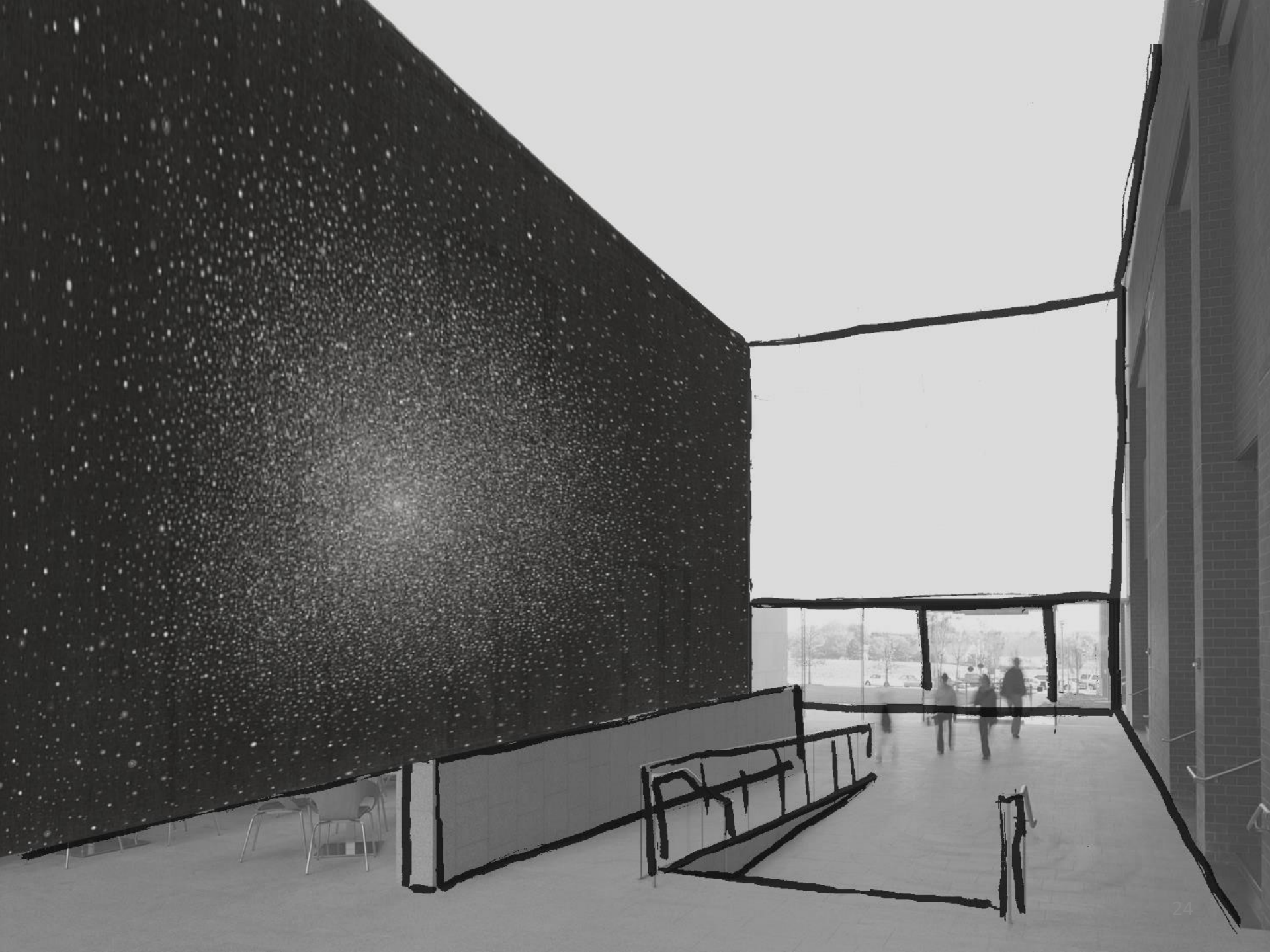


Glare Control

E_h - 150 lux



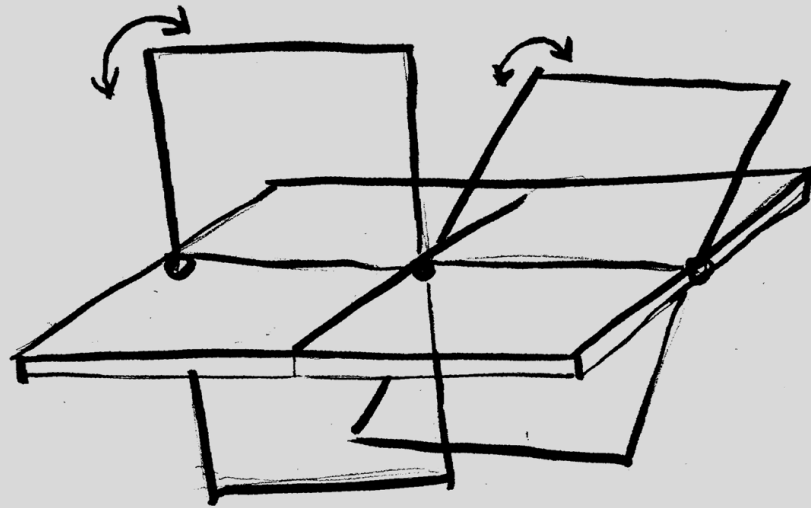
Scheme I

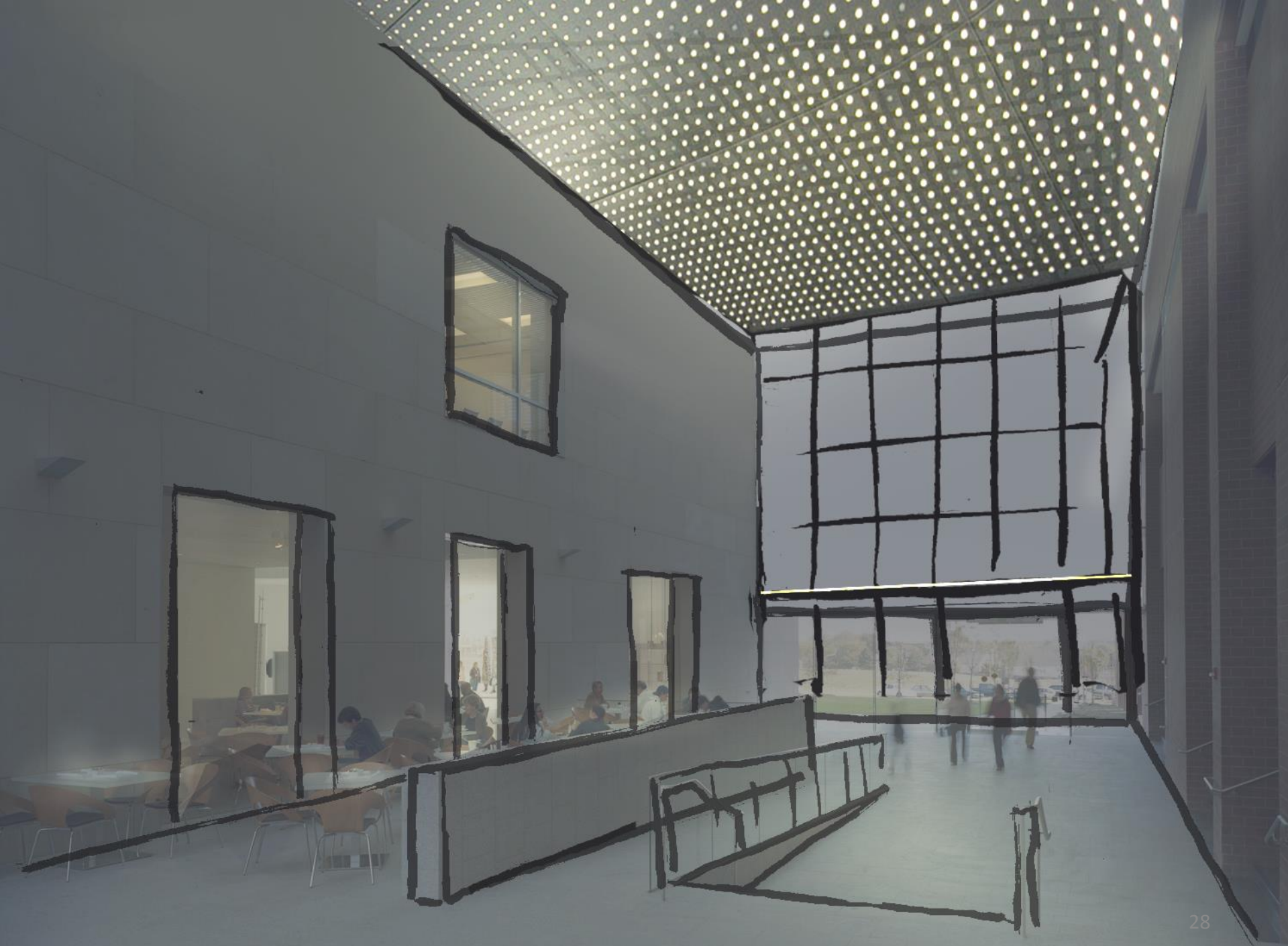


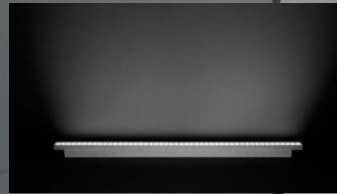
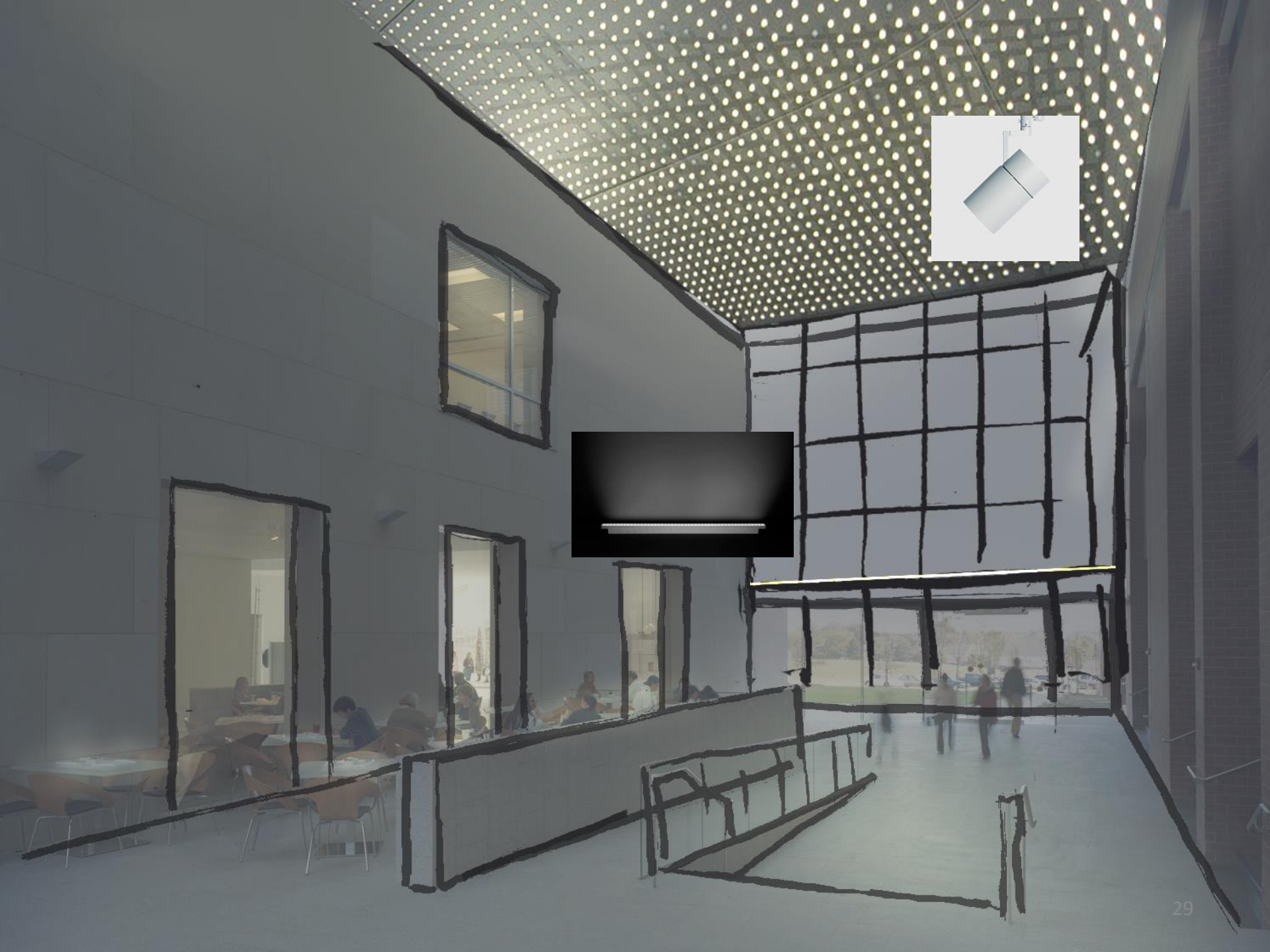




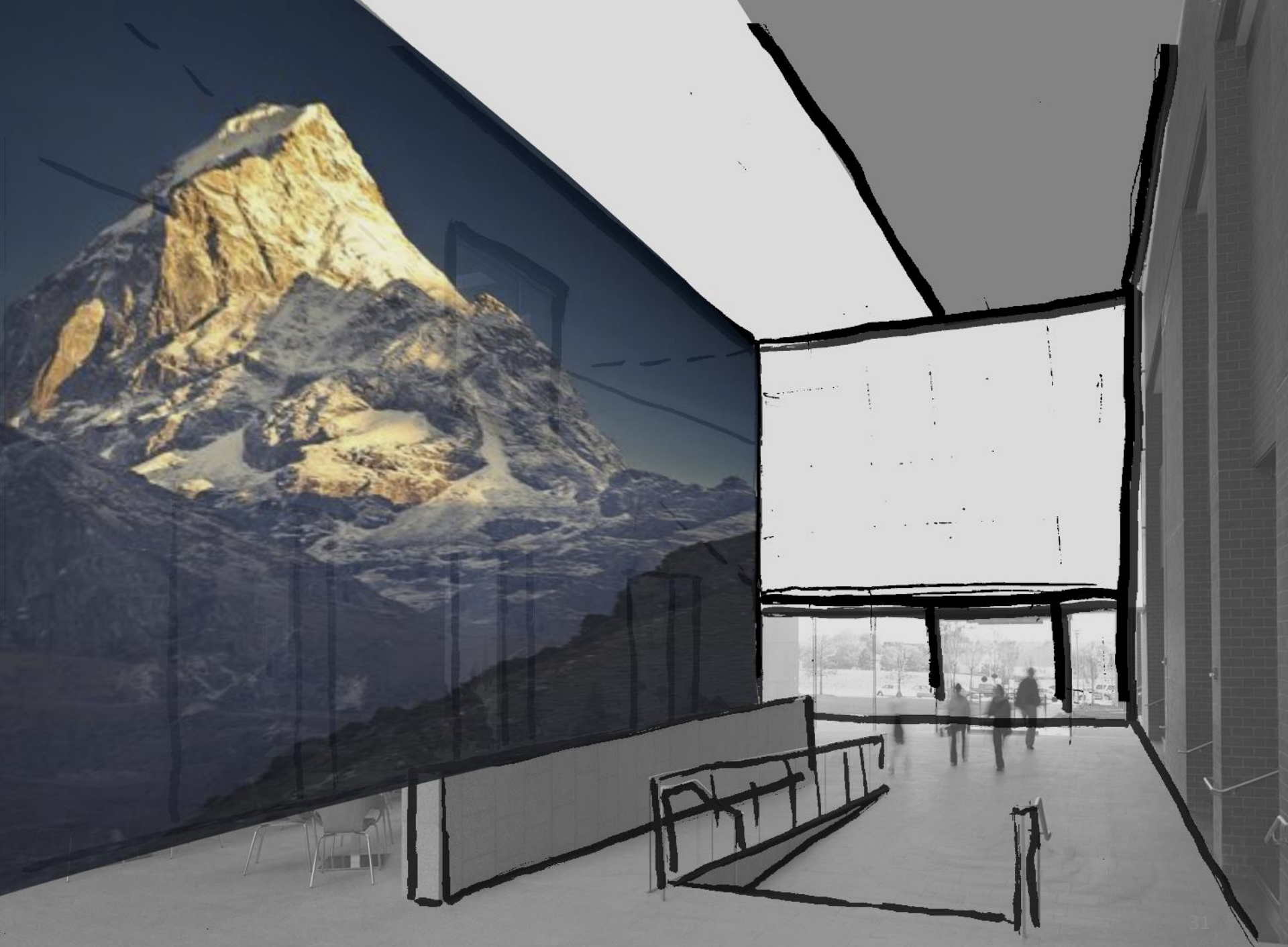
Solarium solar control detail







Scheme II

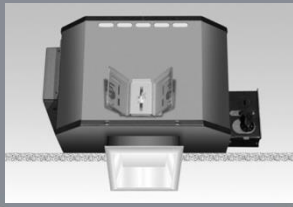




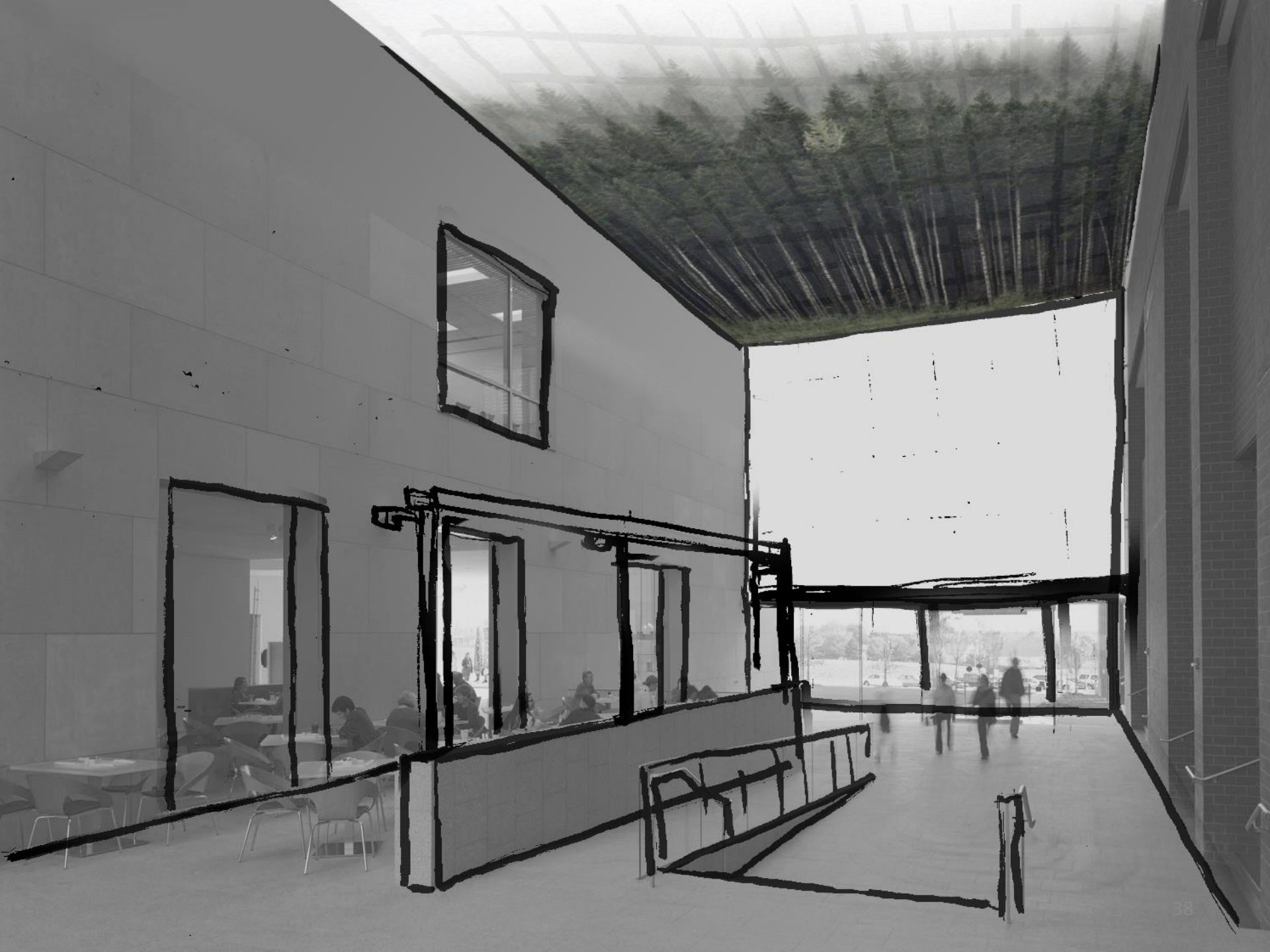






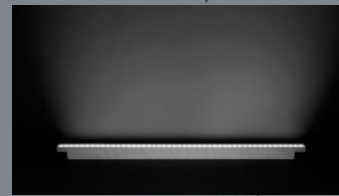


Scheme III

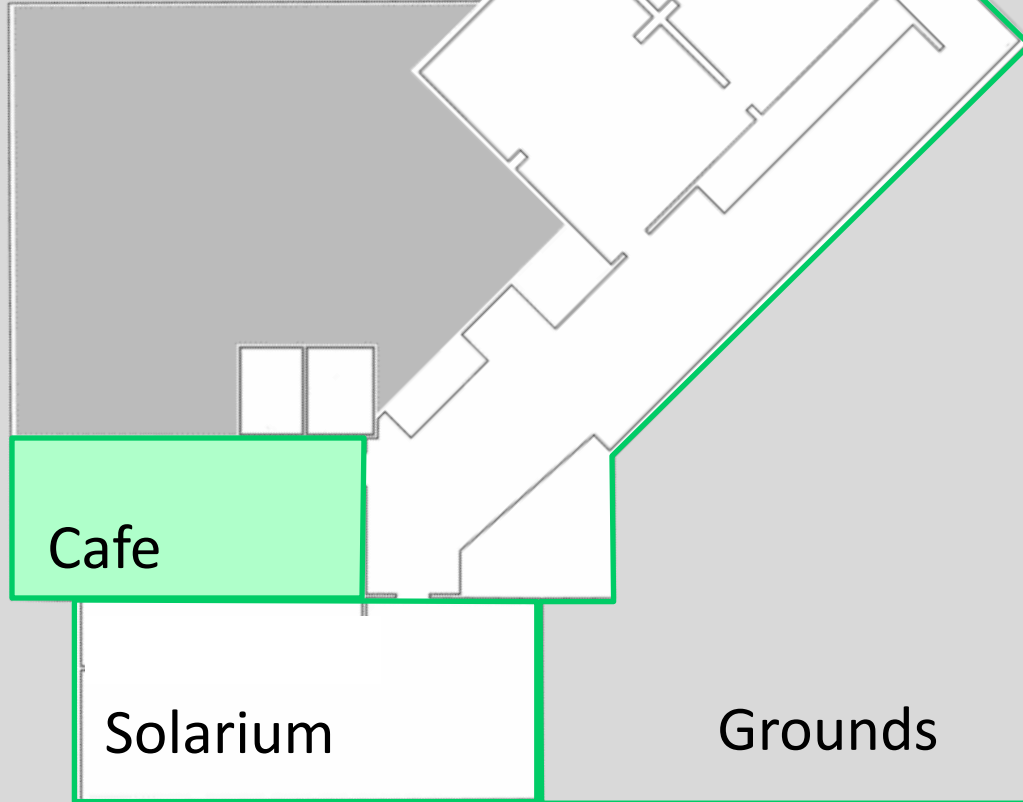








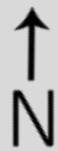
First Floor



Cafe

Solarium

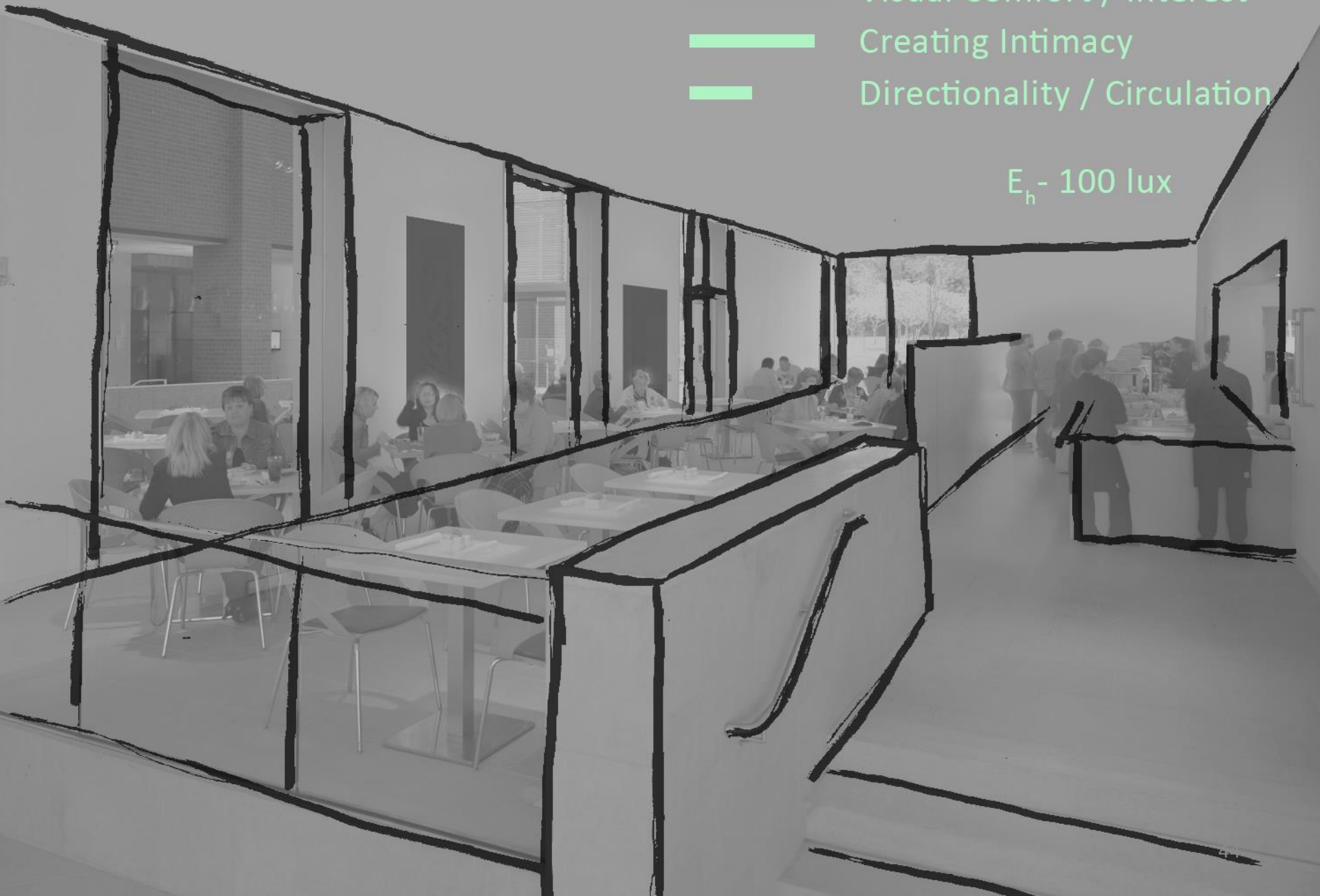
Grounds

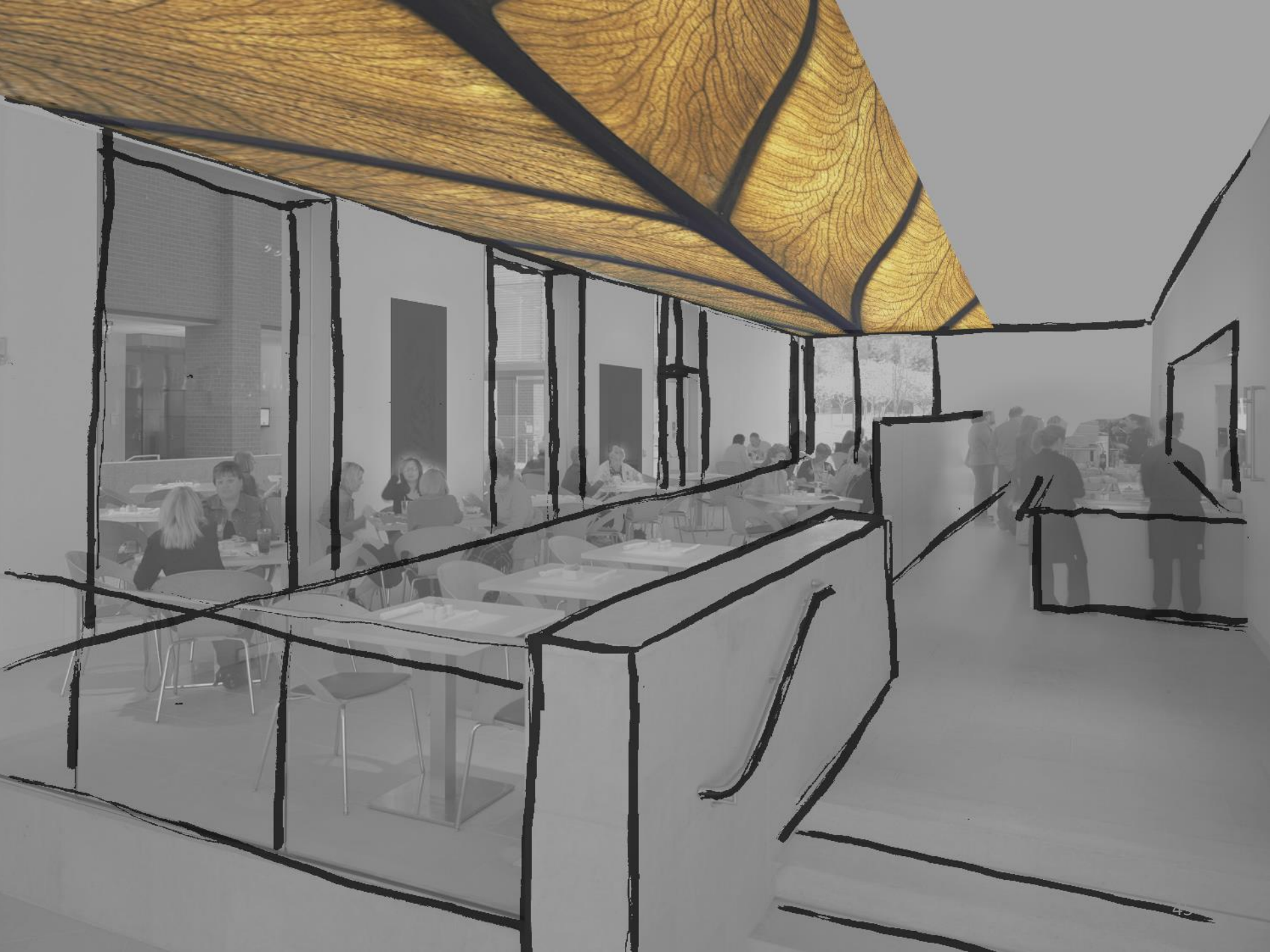




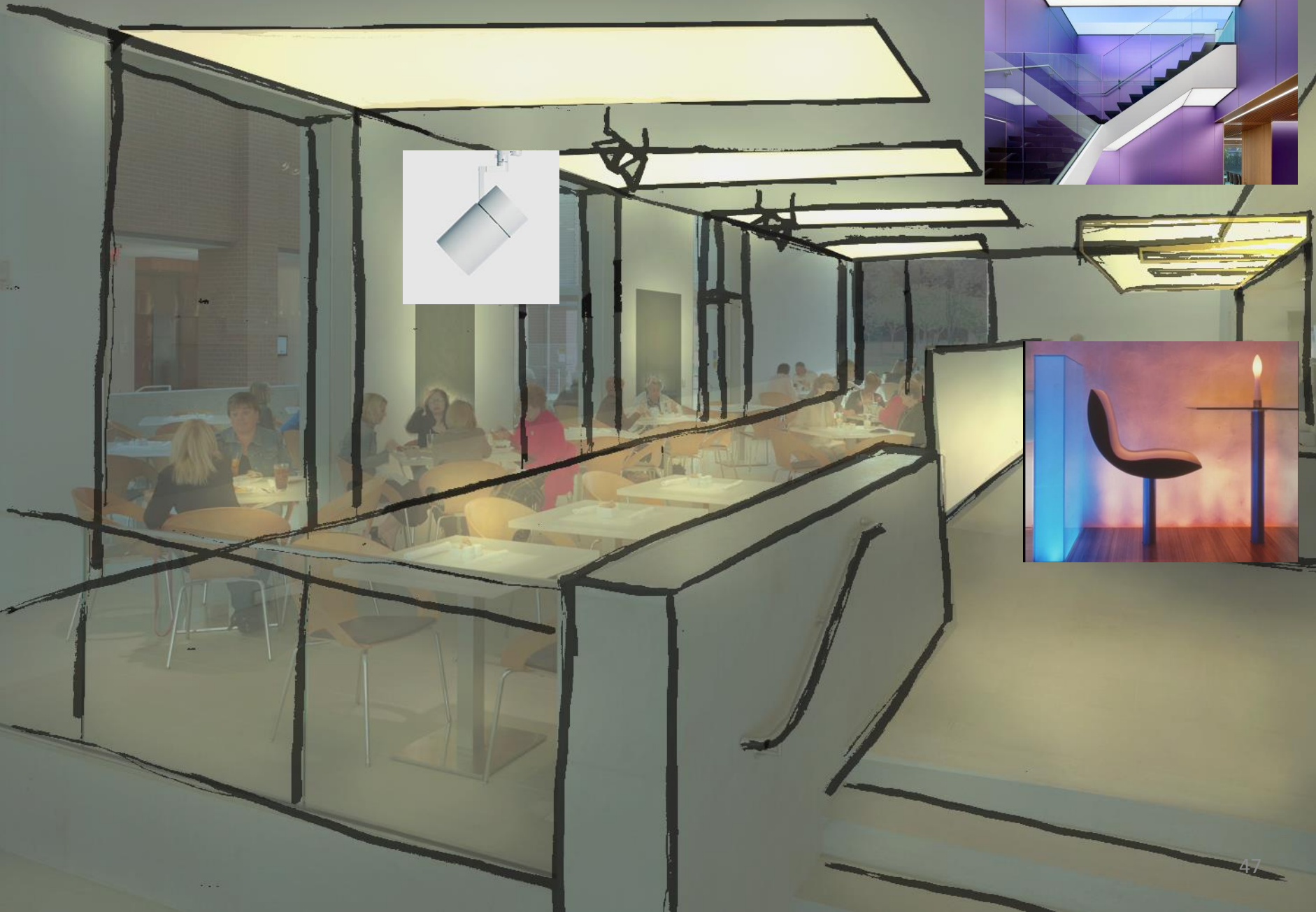
- Visual Comfort / Interest
- Creating Intimacy
- Directionality / Circulation

$E_h - 100 \text{ lux}$



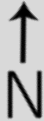
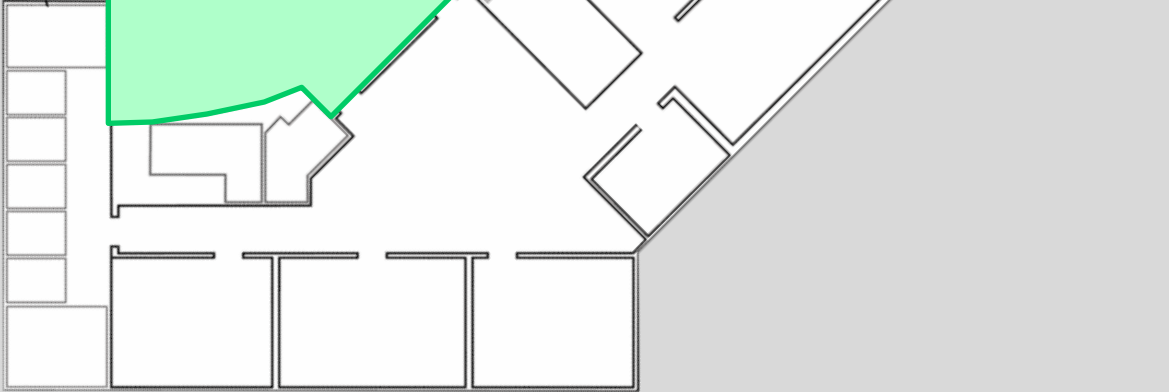




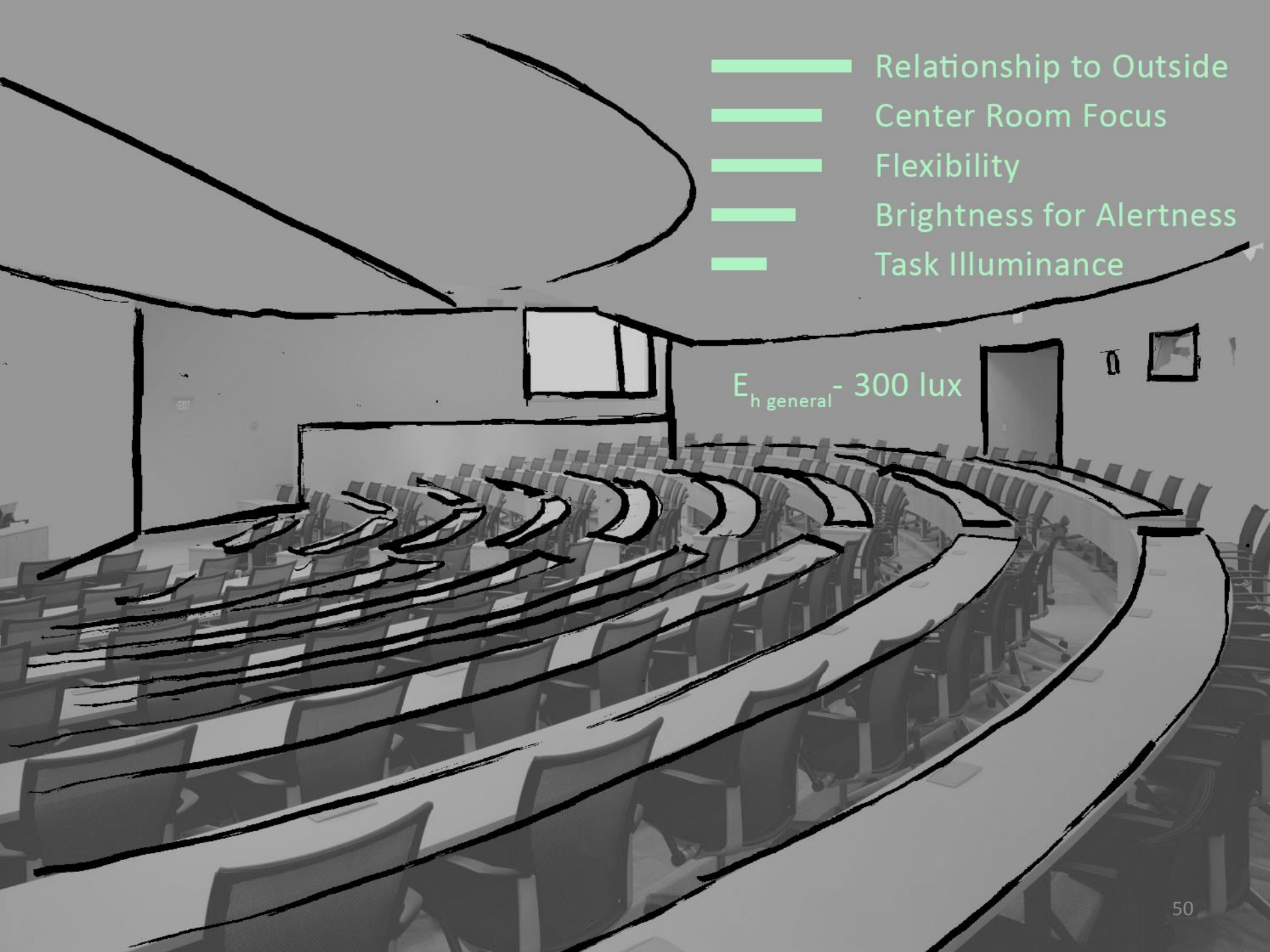


Second Floor

Auditorium







- Relationship to Outside
- Center Room Focus
- Flexibility
- Brightness for Alertness
- Task Illuminance

$E_{h \text{ general}} - 300 \text{ lux}$



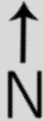
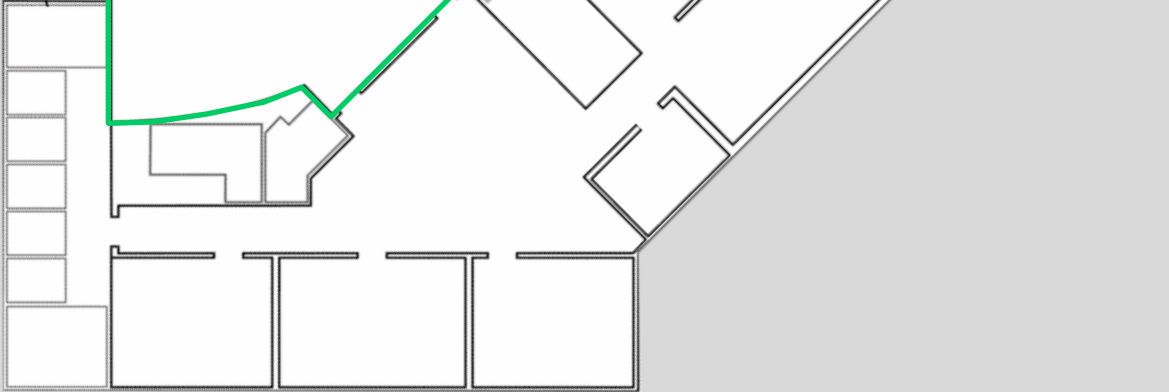




Second Floor

Gallery

Auditorium

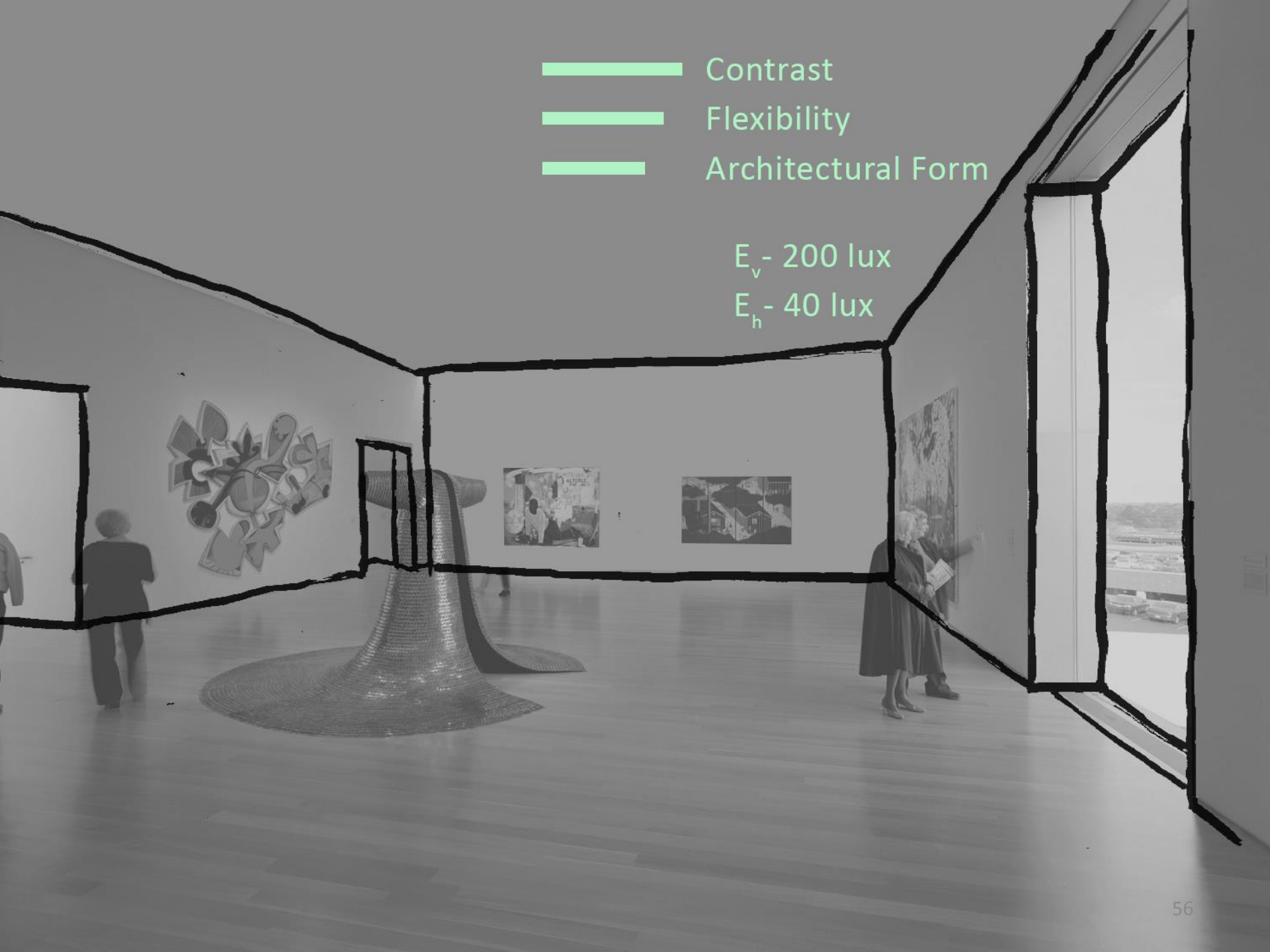


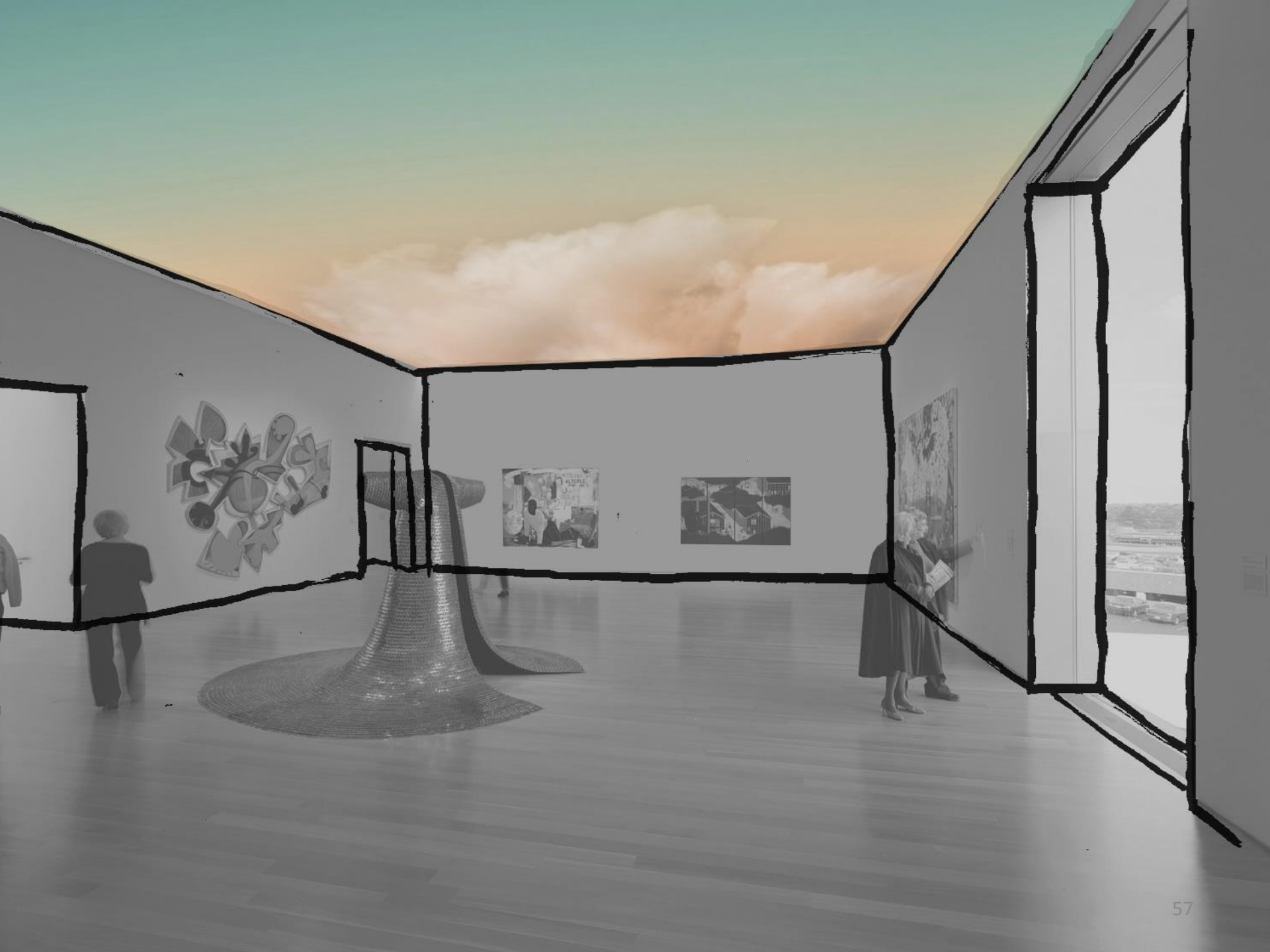


- Contrast
- Flexibility
- Architectural Form

E_v - 200 lux

E_h - 40 lux









Comments & Questions?



Links

http://static.designspiration.net/data/l/90227414649_XFFswitR_l.jpg
http://static.designspiration.net/data/l/367608480362_G1GaKzUT_l.jpg
http://static.designspiration.net/data/l/4208493349669_OWA9r66z_l.jpg
http://static.designspiration.net/data/l/90227380719_aizCv1Vi_l.jpg
http://static.designspiration.net/data/l/947020367834_bQ2X2T2V_l.jpg
http://static.designspiration.net/data/l/285724497168_EVD7Unuu_l.jpg
http://static.designspiration.net/data/l/4208493349571_4fj2xQyr_l.jpg
http://www.seanoconnorlighting.com/attachments/Commercial_VentureCap_06.600.jpg

References

DiLaura, Houser, Mistrick, Steffy. *Illuminating Engineering Society The Lighting Handbook*. 10th ed. N.p.: IESNA, n.d. N. pag. Print.

Support

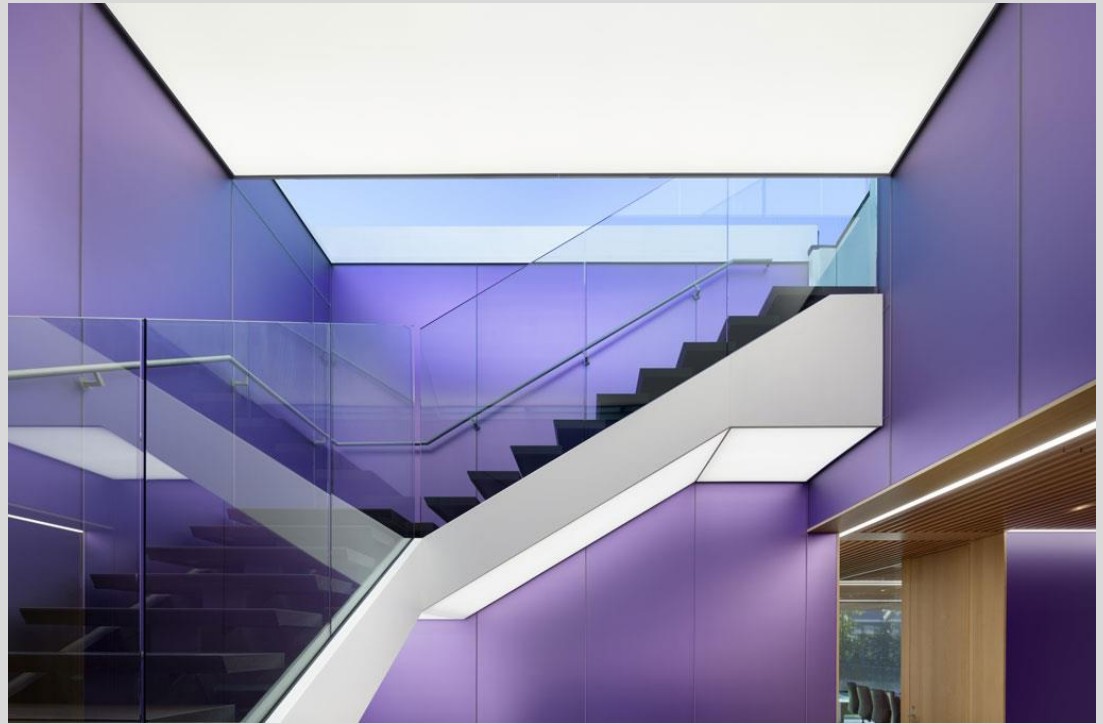
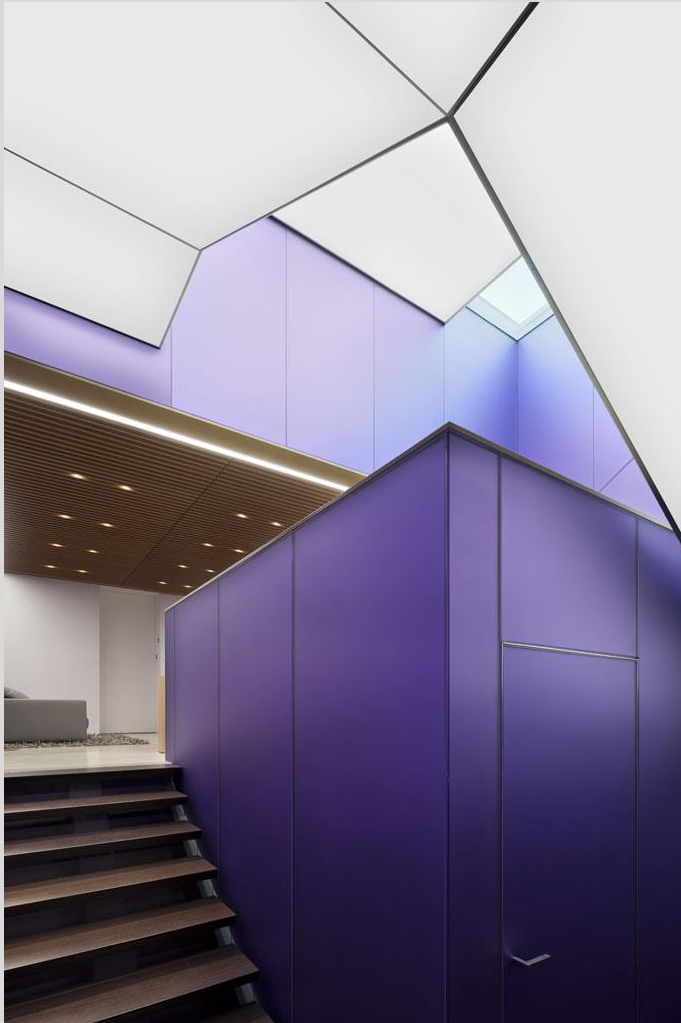
Cafe luminous fabric

Newmat

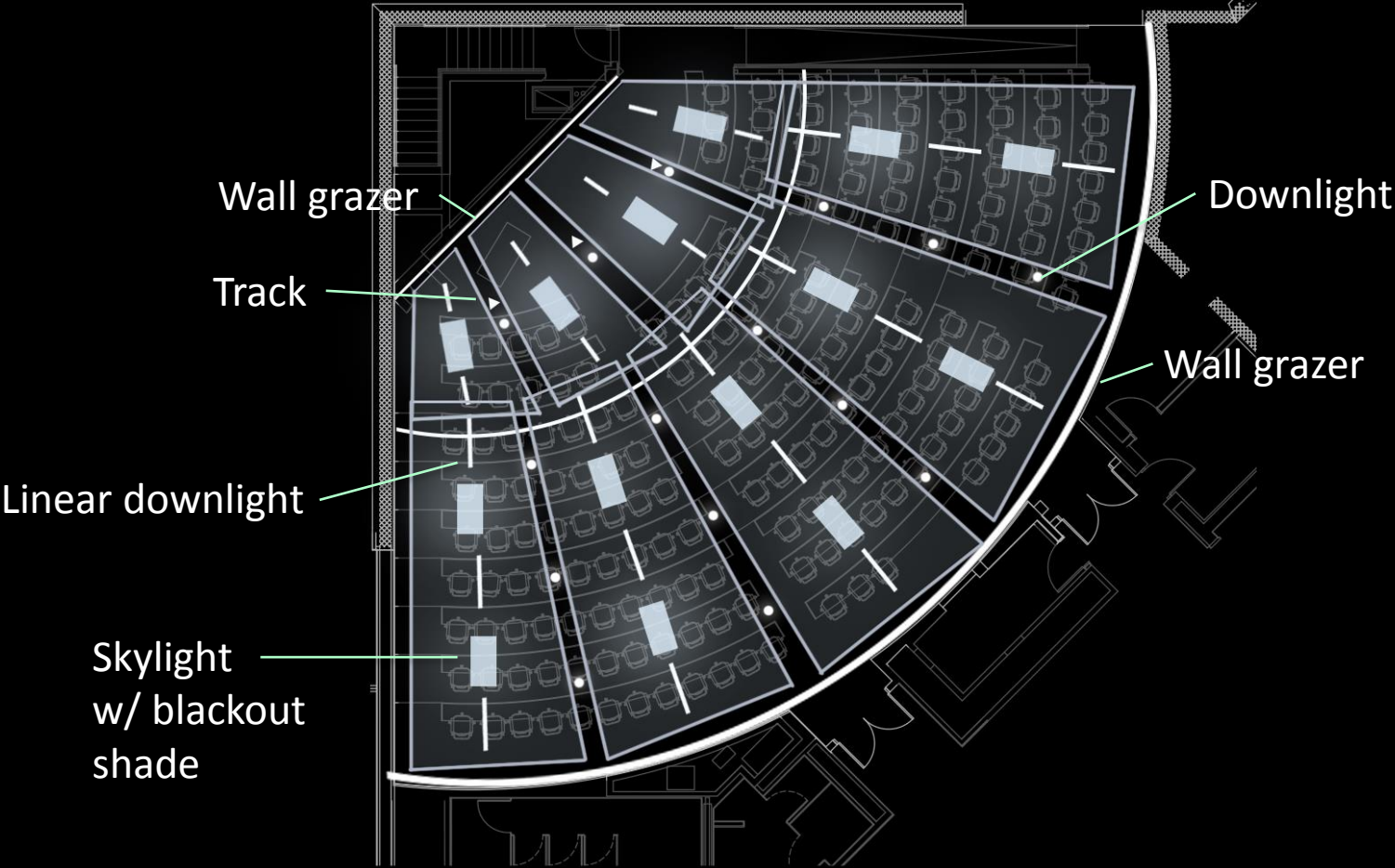


Cafe luminous fabric

Newmat



Auditorium floor plan

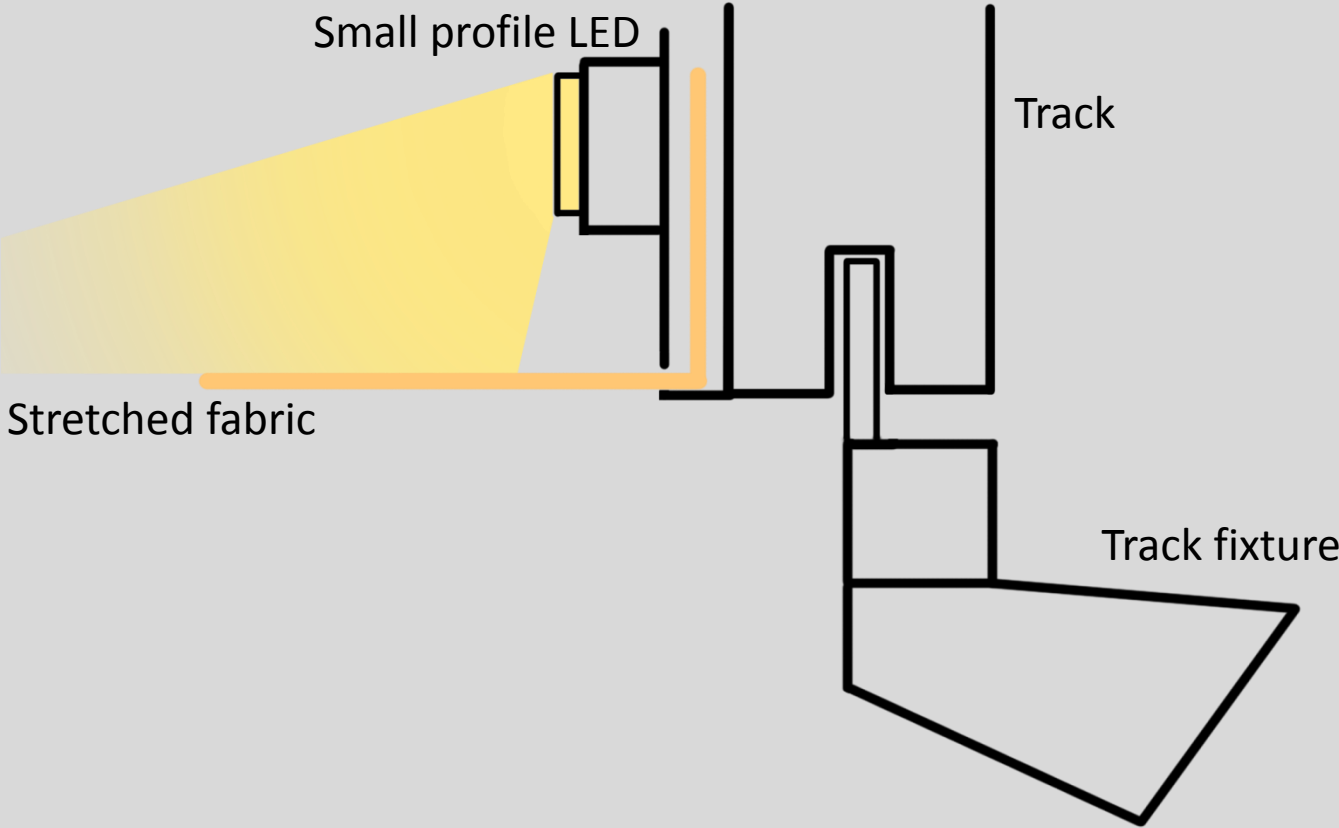


Auditorium daylit fabric

Newmat



Gallery track detail



Gallery luminous fabric

