

Cal (IT)²

University of California, San Diego

Brian Smith

Lighting/Electrical Option

<http://www.arche.psu.edu/thesis/eportfolio/current/portfolios/bts151>

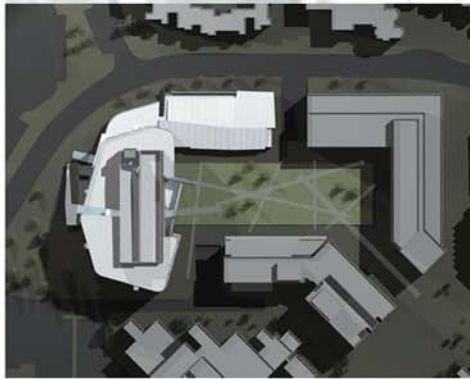


Project Team

- Owner: University of California, San Diego
- General Contractor: Gilbane
- Architect: NBBJ
- Civil Engineer: Pountney Consulting Group
- Structural Engineer: Rutherford & Chekene
- MEP Engineer: Flack & Kurtz
- Lighting Designer: HLB Lighting Design

Project Statistics

- 220,000 sq ft
- 7 stories
- Cost: \$61,200,000
- Dates of Construction: Jan 03 - Oct 05
- Delivery Method: Design - Bid - Build
- Meets California Title 24 Energy Standards



Architecture

- Modern technological design
- Underground tunnel or “worm-hole” through middle of building
- 200 seat black box theater
- Glass and steel facade with tiled concrete panels and aluminum cladding



Lighting

- Compact fluorescent downlights
- Pendant fluorescent strip lights in research areas
- Blue cove lighting in lobby
- Occupancy sensors and automatic shutoff controls

Electrical

- 208Y/120V and 480Y/277V supply system
- 12 kV power distribution
- 750 kW emergency diesel generator
- Receptacles and misc interior lighting stepped down to 208Y/120V system

Mechanical

- VAV air re-circulation system
- 16 Air Handling Units with hydronic cooling, heating and preheating coils service the entire building
- Gas fired boiler system

Structural

- Structural steel framing
- Poured concrete slab on metal form decking
- Seismic connections

