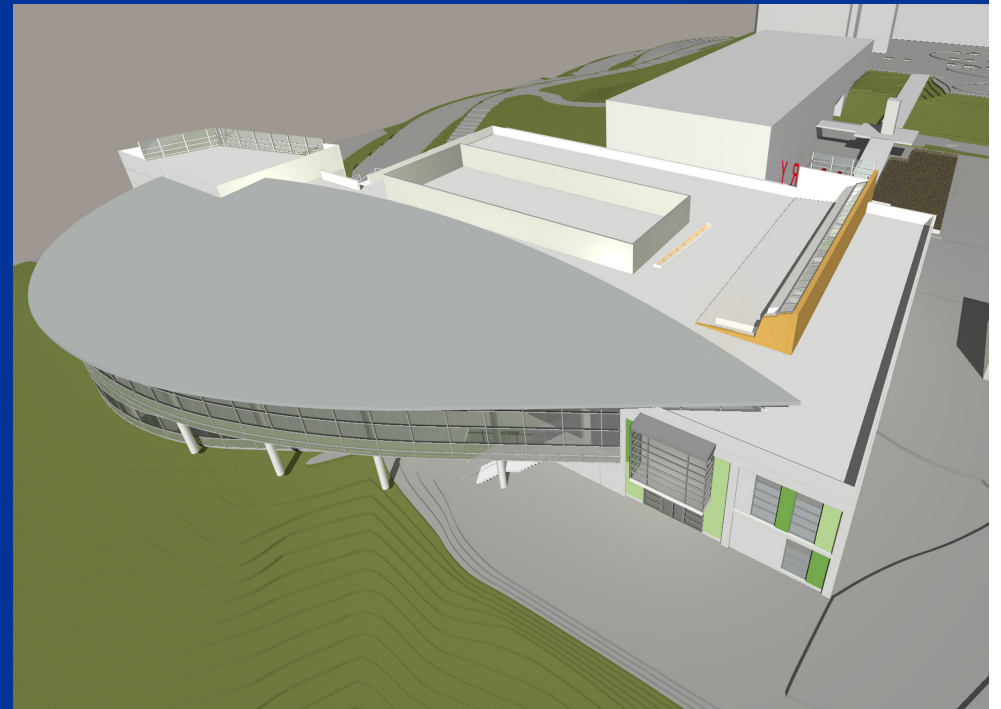


Rio Hondo Library and Learning Resource Center Schematic Lighting Design

Jennifer Mers
The Pennsylvania State University
Architectural Engineering
Lighting/Electrical Option
Faculty Advisor: Dr. Martin Moeck



Rio Hondo Library and Learning Resource Center

- Location: Whittier, CA
- Size: 93,740 s.f. – 2 Stories
- Setting: Community College
- Function Type:
 - Floor 1: Writing and Reading Program Facilities
 - Floor 2: Library Facilities

Concept Development

Function : Education

Atmosphere:

Comfortable

Inviting

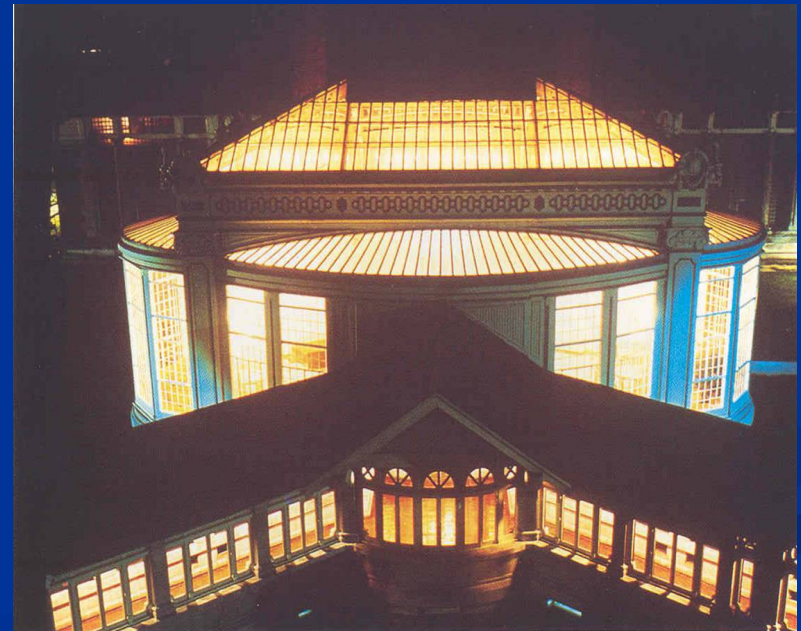
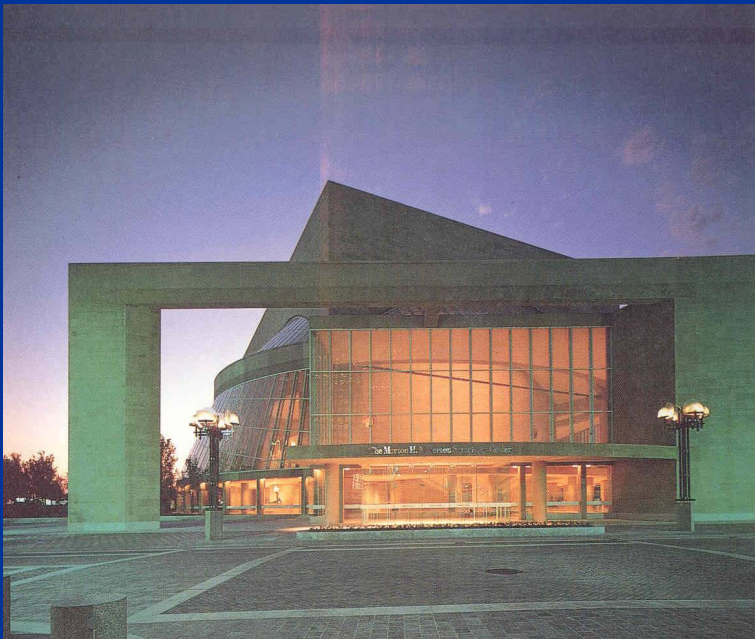
Quiet

Relaxed

Warm

Concept Development

Education becomes a beacon, a lantern for the community



Evaluation Spaces

- Lobby
- Microfilm and Reading Area (Second Floor)
- Stack Area (Second Floor)
- Exterior

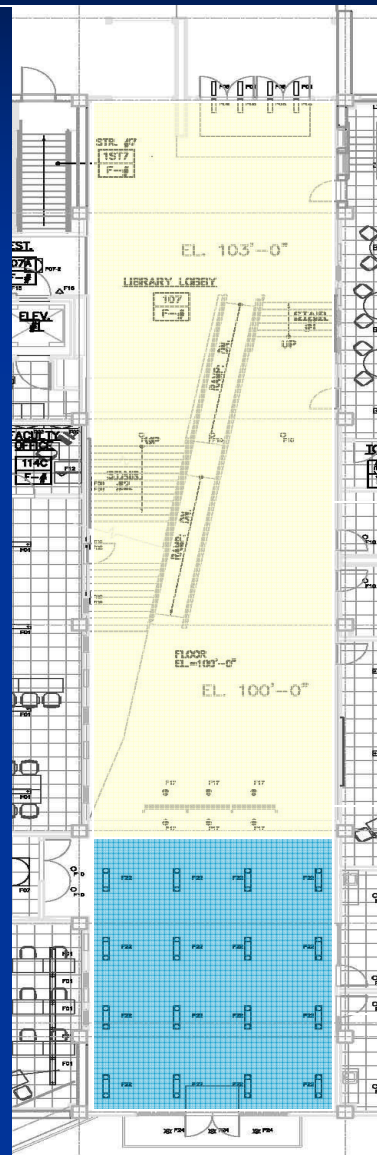
Lobby

Architectural Features

- Main Entrance to Library
- First Impression
- Highest part of the ceiling is 39'
- Contains skylight across the length of the lobby
- Floating wooden ceiling located above main stairwell
- Large circulation space
- Allow for gallery space located behind the three panels
- Bridge runs across connecting the east and the west parts of the lobby



Lobby

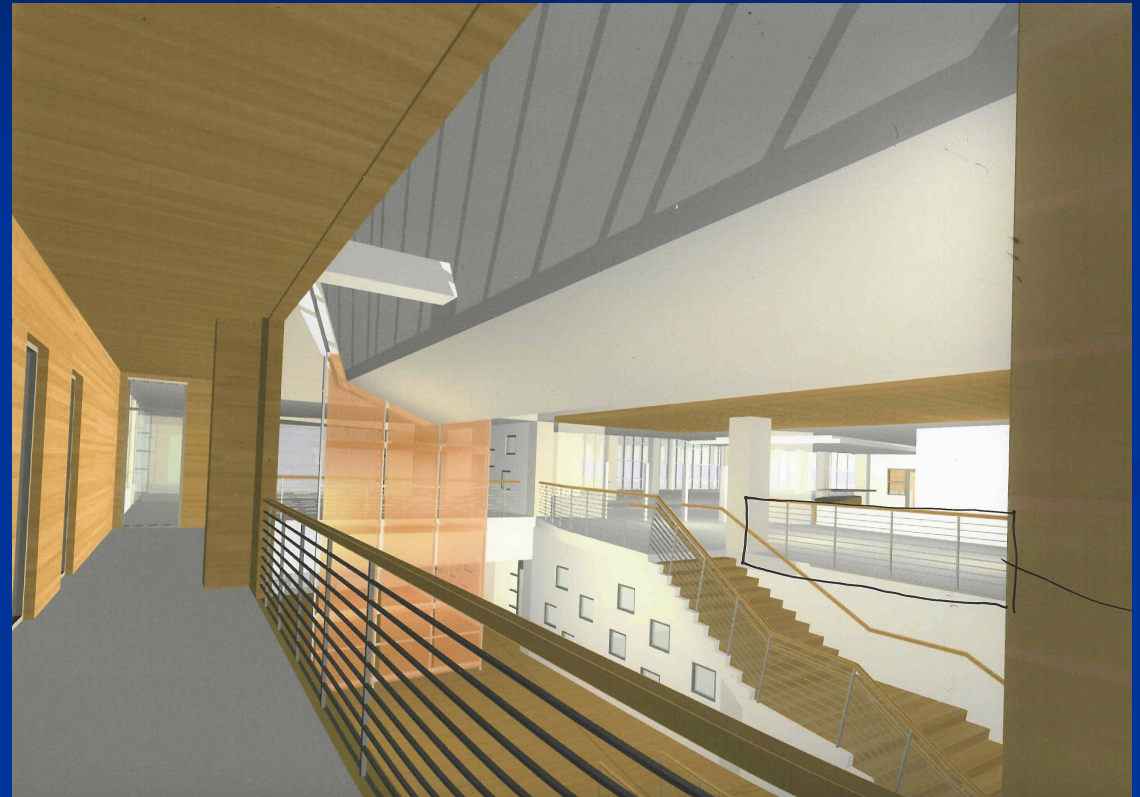


Main Entrance

Circulation Area

3 Panel Focal Point of Lobby

Gallery Space



Lobby

Lighting Goals

- Spaciousness
- Pleasantness
- Provide a warm, inviting atmosphere
- Accent focal points

Lobby

Design Schematic

Daylight pours into space lighting the ceiling, floor, and wall

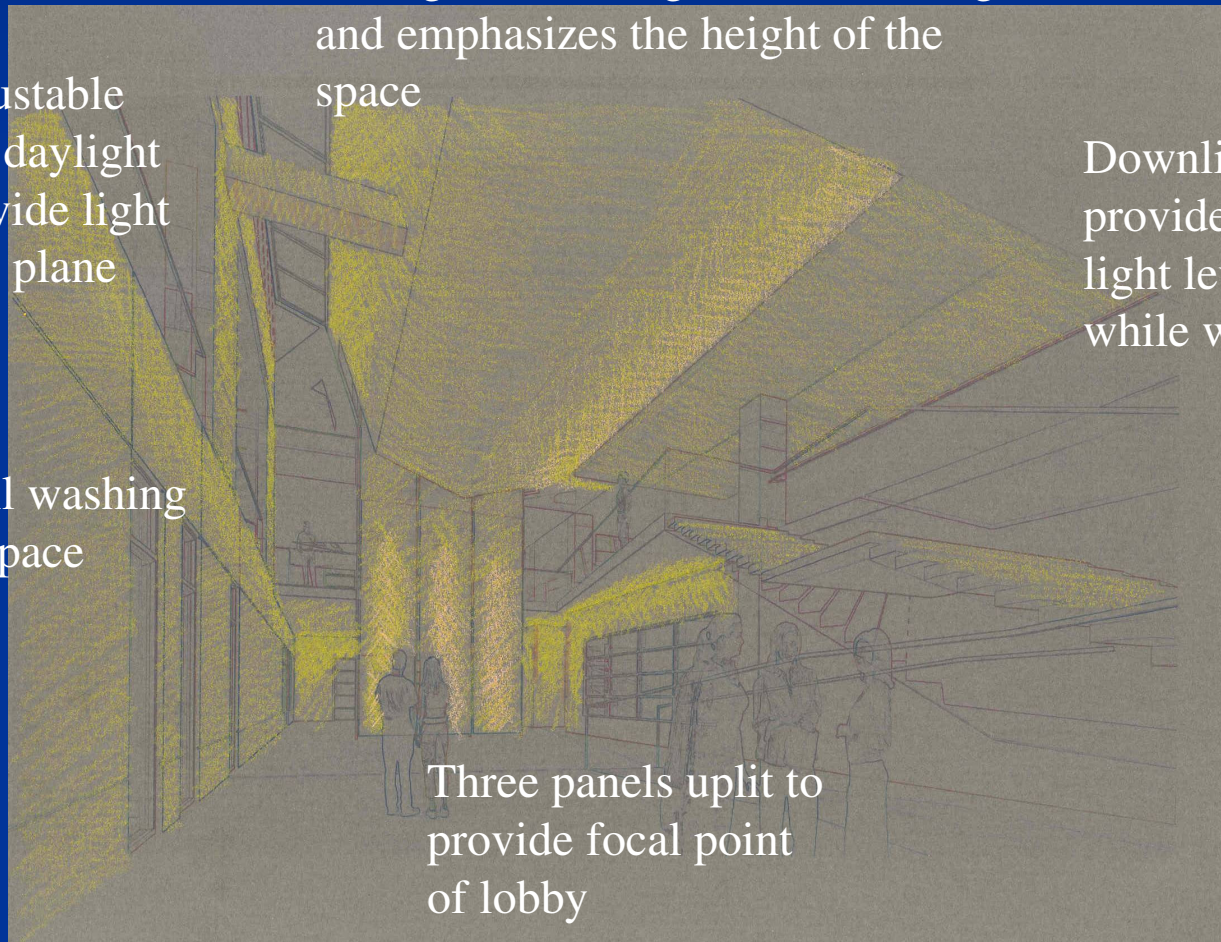
Recessed adjustable fixtures on a daylight sensor to provide light on the ceiling plane

Uniform wall washing throughout space

Cove lighting above the floating ceiling – throws light on the ceiling and emphasizes the height of the space

Downlights to provide appropriate light level for safety while walking

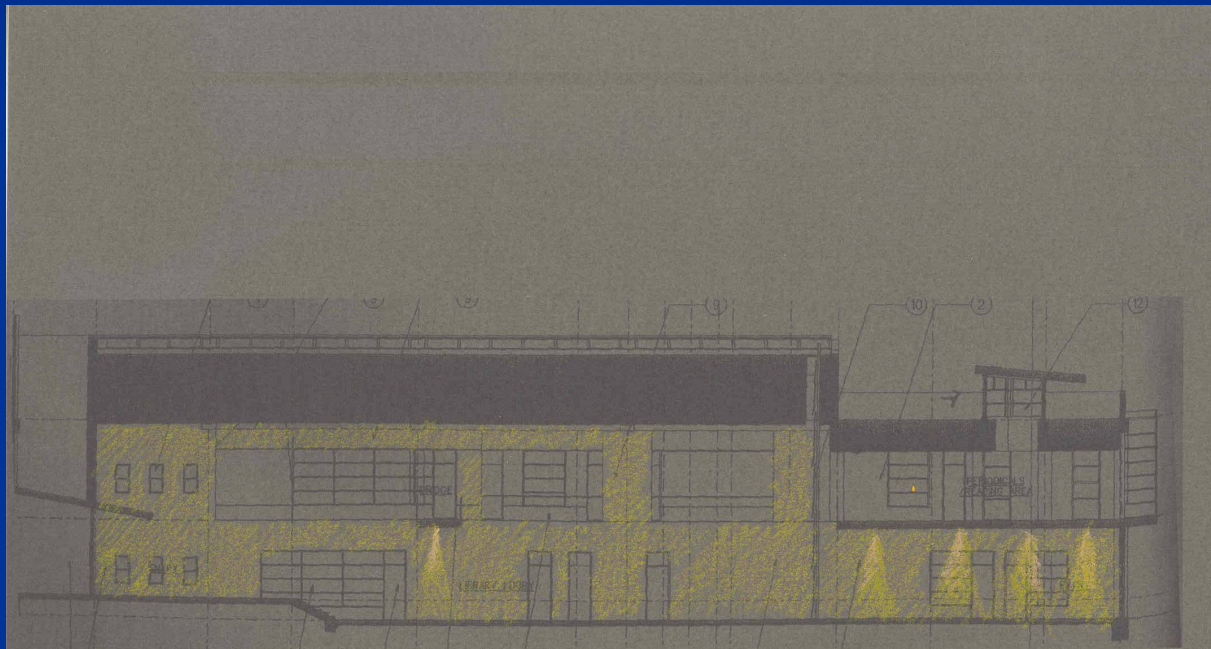
Three panels uplit to provide focal point of lobby



Lobby

Design Schematic

Uniform wall washing
provides spaciousness



Recessed downlights
for under the bridge
illumination

Adjustable track
lighting for gallery
space

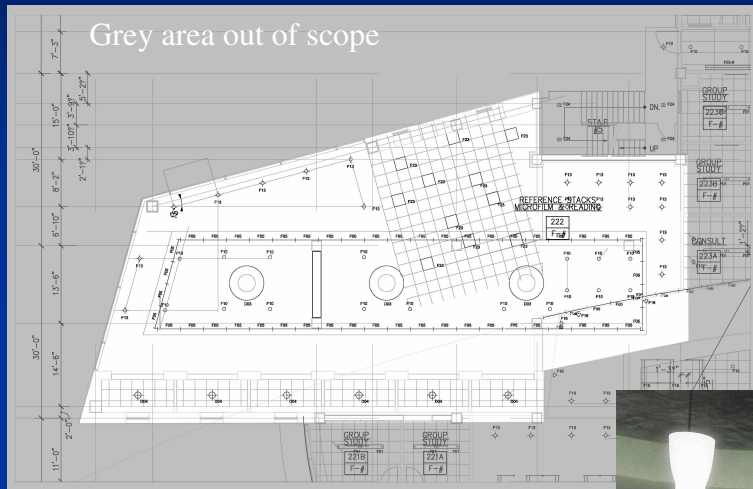
Microfilm and Reading Area

Architectural Features

- Multilevel Ceiling Planes
- Open Area where tables are not permanently set
- The perimeter area is smaller more intimate spaces



Microfilm and Reading Area



Microfilm and Reading Area

Lighting Goals

- Spaciousness
- Clean
- Warm
- Inviting
- Relaxed
- Avoid reflected glare

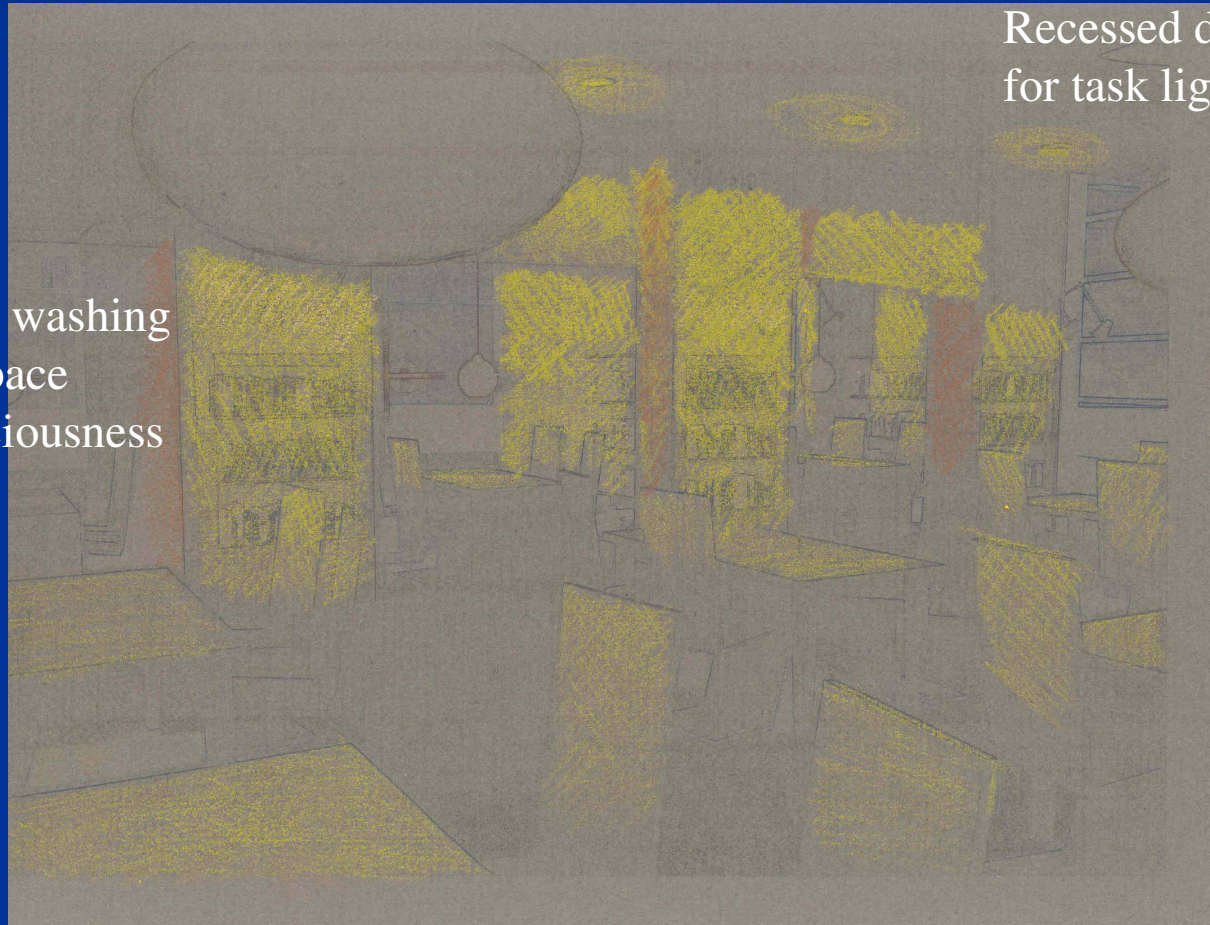
Microfilm and Reading Area

Design Schematic

Losing the globular fixtures, no fixtures will be visible creating a clean environment

Recessed downlights for task lighting

Uniform wall washing throughout space provides spaciousness

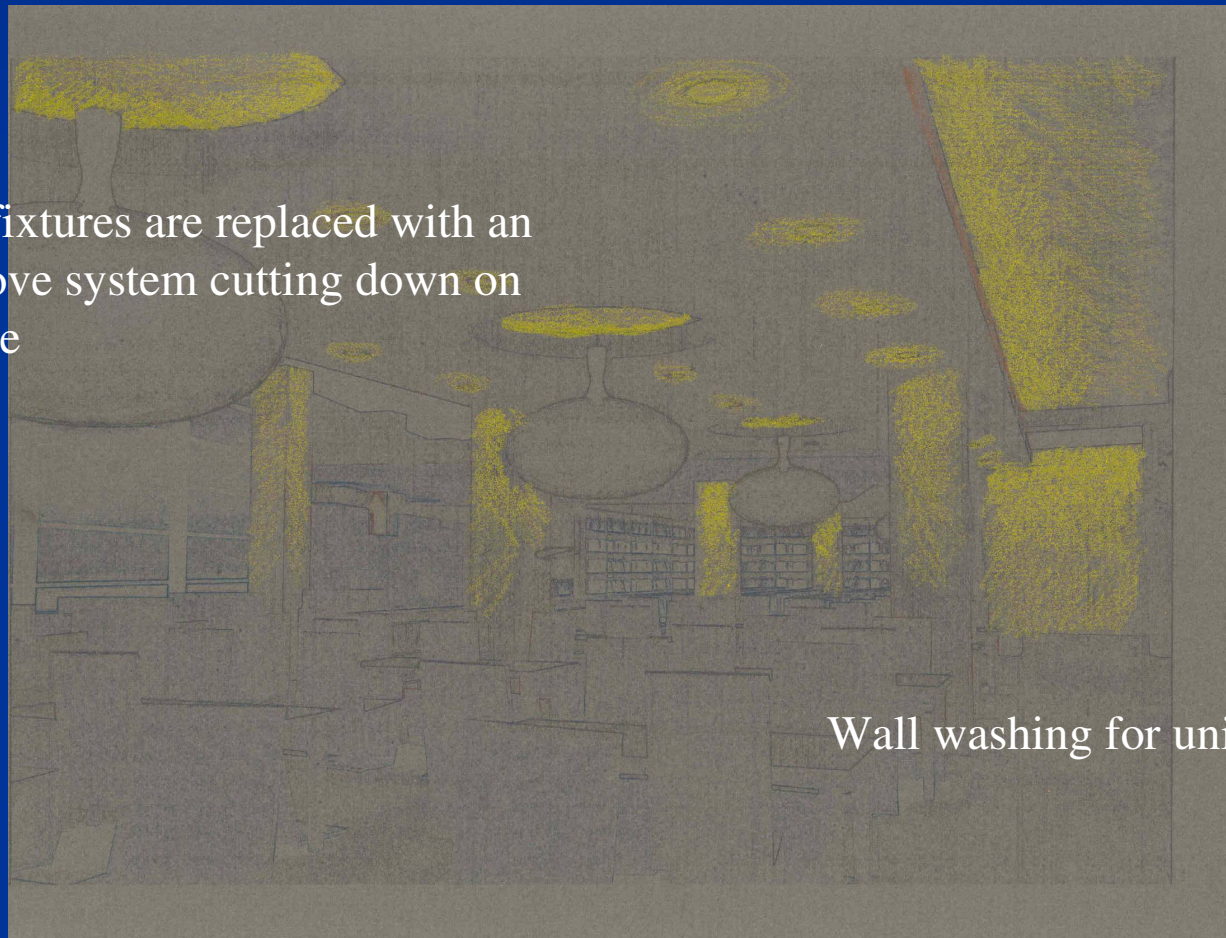


Microfilm and Reading Area

Design Schematic

Cove lighting lights the ceiling plane

Globular fixtures are replaced with an indirect cove system cutting down on direct glare

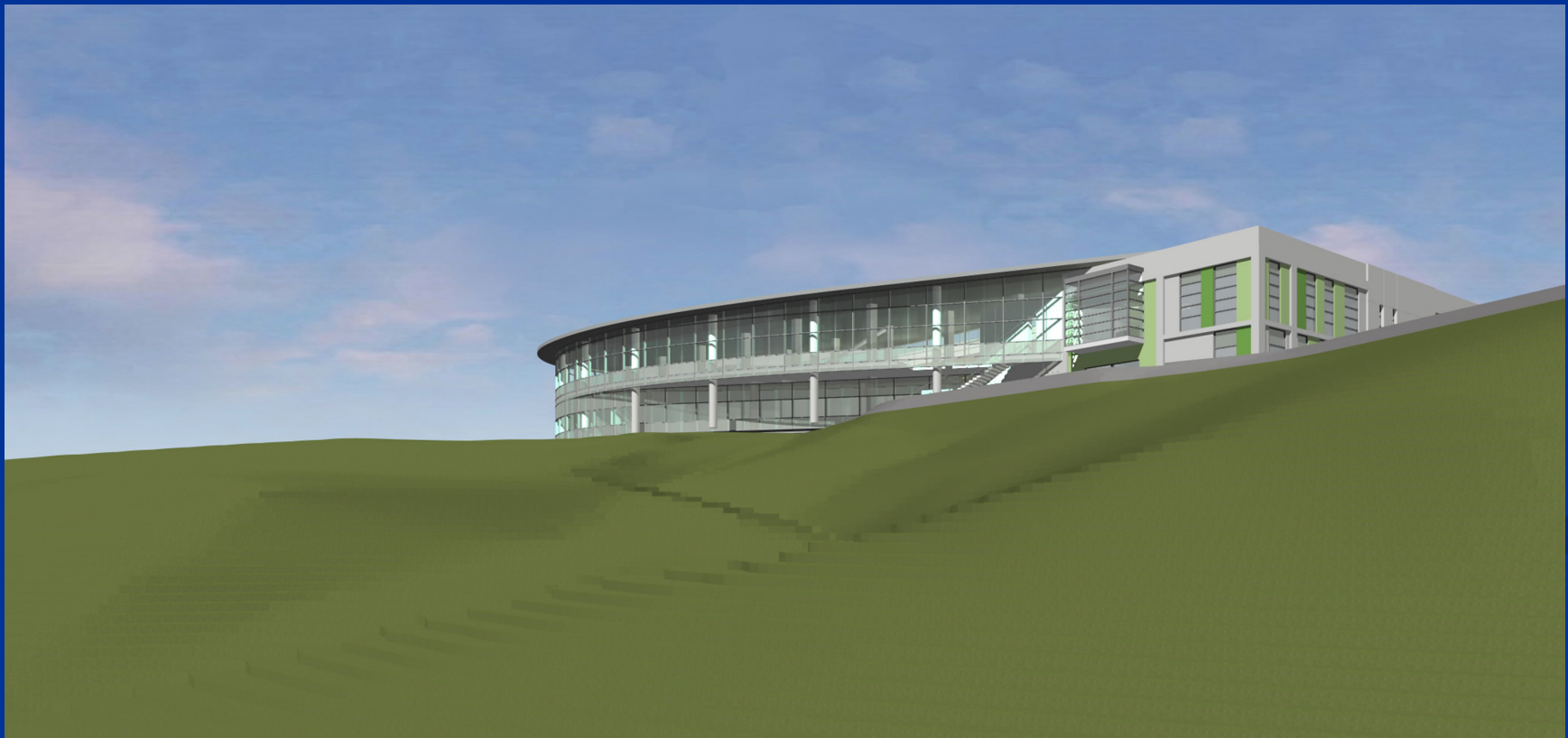


Wall washing for uniformity

Stack Area

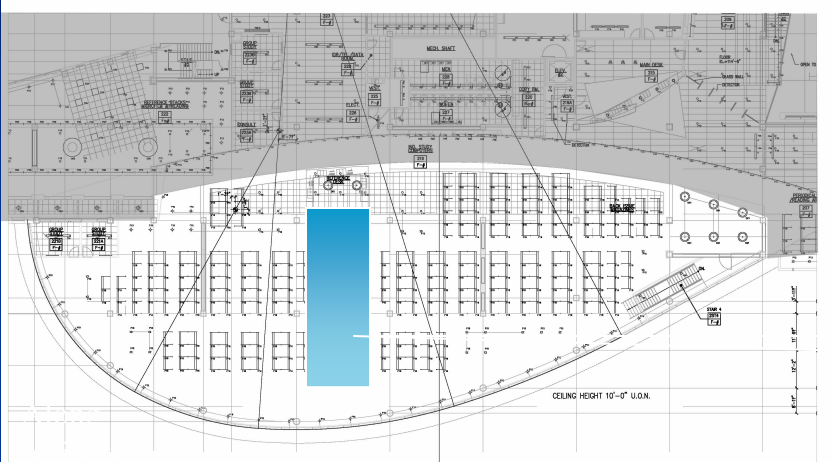
Architectural Features

- South facing SolarBan 60 curtain wall
- Ceiling slopes from 18'-15'
- Roof is made of single ply membrane
- Function: stack reading, group study, individual study

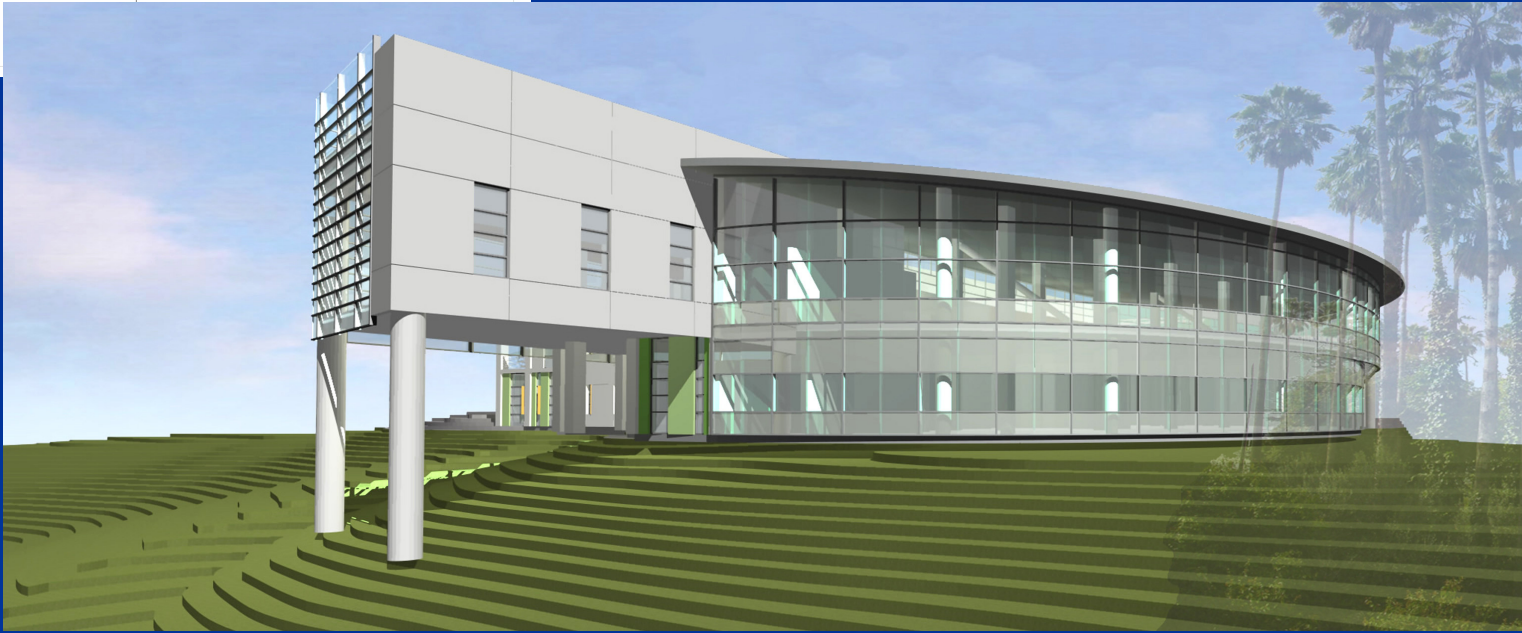


Stack Area

Grey area out of scope



Group Study



Stack Area

Lighting Goals

- Clean
- Spaciousness
- Safety

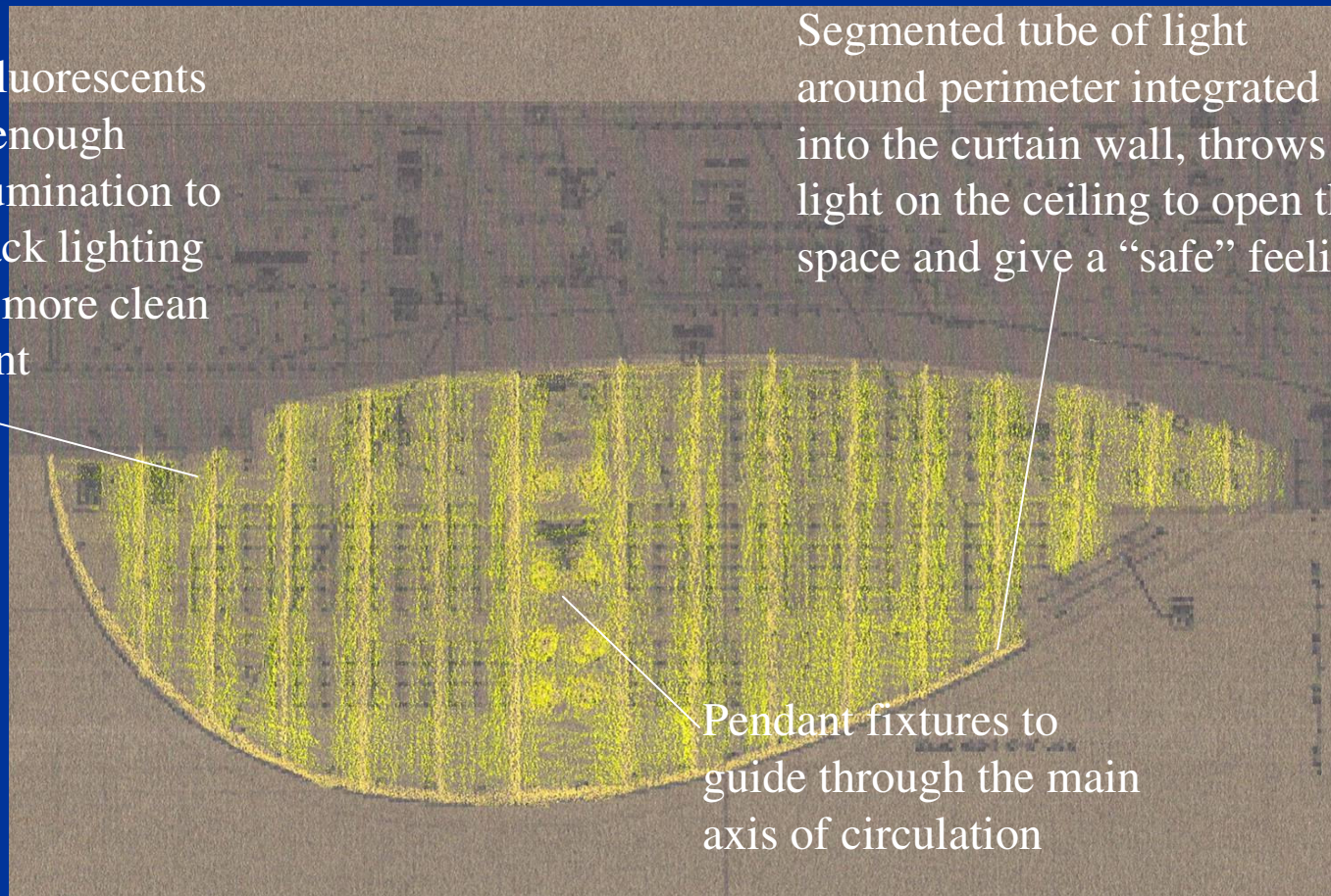
Stack Area

Design Schematic

Recessed fluorescents providing enough general illumination to lose the stack lighting allowing a more clean environment

Segmented tube of light around perimeter integrated into the curtain wall, throws light on the ceiling to open the space and give a “safe” feeling

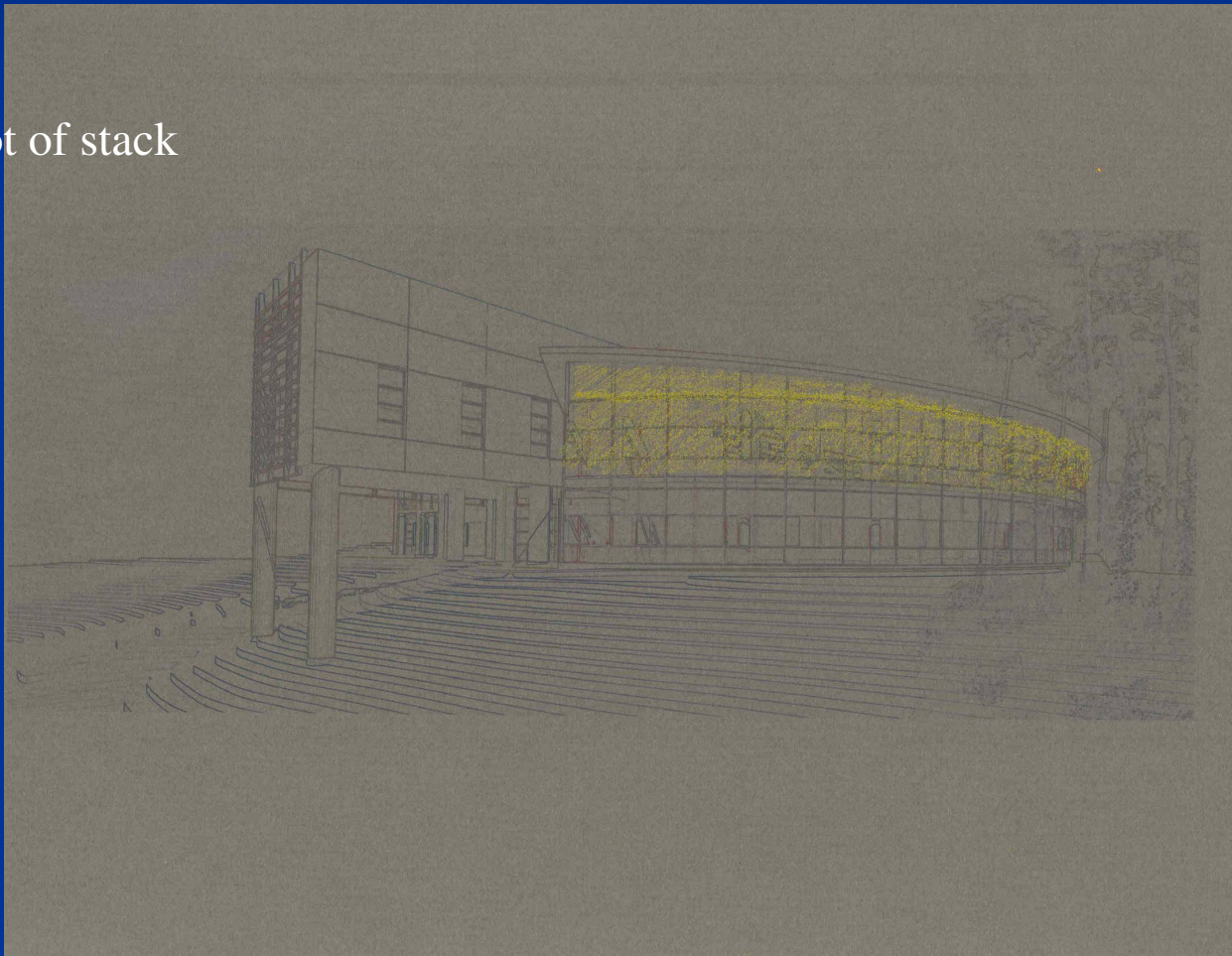
Pendant fixtures to guide through the main axis of circulation



Stack Area

Design Schematic

Exterior shot of stack
area



Exterior

Architectural Features

- Aluminum canopy extends to the interior of the lobby
- Glass curtain wall



Exterior Lighting Goals

- Lantern
- Beacon

Exterior Design Schematic

Cool letters stand out
against bright
background

Inside lobby glows through the
glass curtain wall and becomes a
lantern

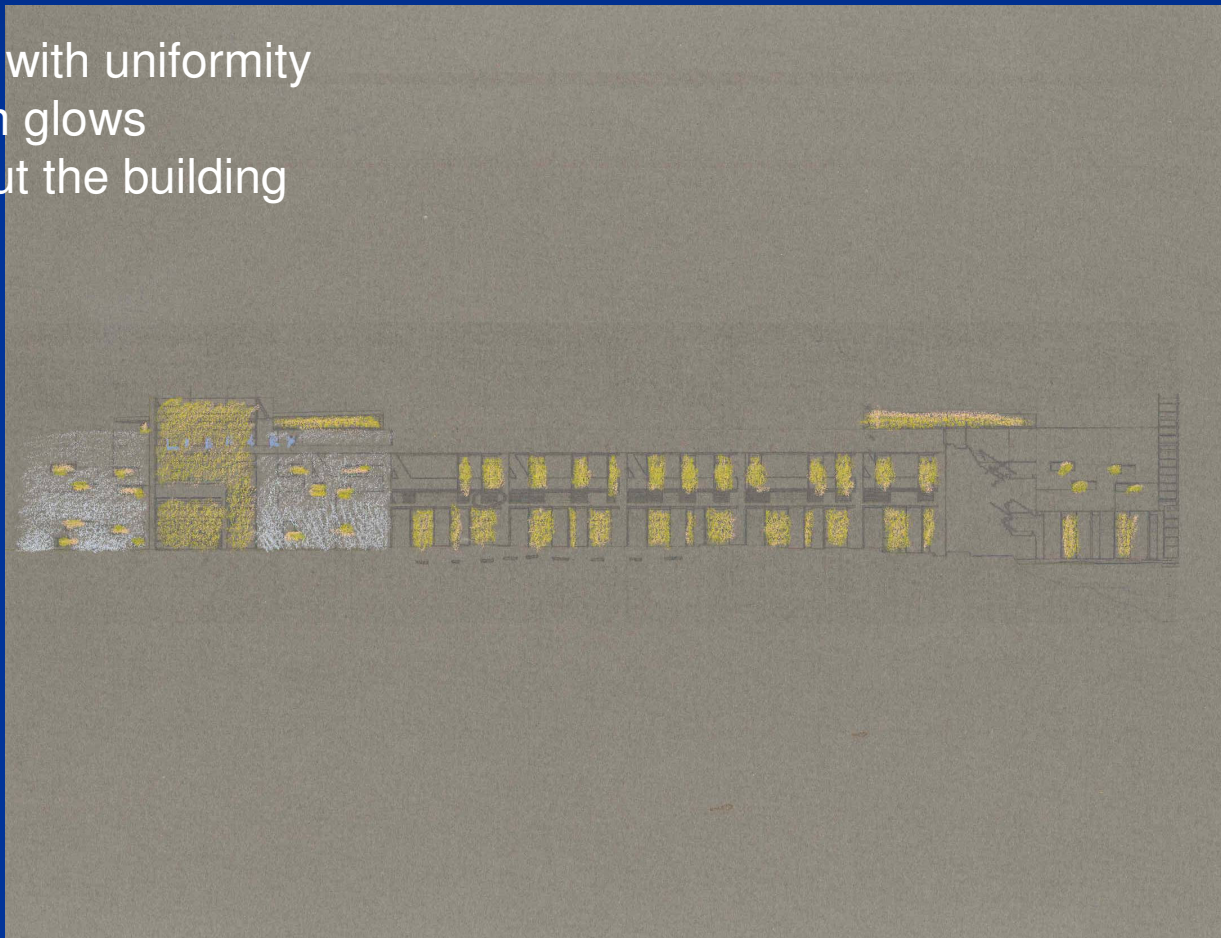


Blue color wash on
exterior contrasts with
the glowing light from
within and emphasizes
the goal of becoming a
lantern

Wall sconce on both
sides of entrance
making the entrance
glow as well

Exterior Design Schematic

Continue with uniformity
and warm glows
throughout the building



Thank You

Comments?