

Architectural Decorative Soli Zontio 48228ALU
2 Light, T5 Pendant

Page 1 of 3

Notes:
1) Barbed dimensions shown.
2) Finish not shown.

Finish Defining Information

Catalog No.	Finish	Wattage	Voltage	Lamping
48228ALU	Matte Aluminum Powder-Coated	2 x 28W	120/277V	T5, Mini-Digit
48228ALU	Matte Aluminum Powder-Coated	2 x 60W	120/277V	T5, Mini-Digit, High-Output

Finish Defining Information (Order Finish Separately)

Catalog No.	Description	Dimensions	Finish
48228	Top Cap, Reflector (2" Dia.)	2" Dia. x 1 1/8" H	White ceramic coated top, anodized bottom. Clear polished edges.
48228	Canal Glass Diffuser (2 1/2" Dia.)	2 1/2" Dia. x 2 1/8" H	Enamel top and bottom. Clear polished edges.

Features

- Mounting Plate:** 18 GA. 1680 Cold-rolled steel for direct mounting to most junction boxes. Secondary mounting holes provided to mount directly to ceiling.
- End Cap:** (2) One end aluminum. See above for finish.
- End Cover:** (2) One end aluminum. See above for finish.
- Lamp Enclosure:** (2) Extruded aluminum. See above for finish.
- Support Arms:** (2) 2 1/2" diameter machined alloy lamping arm with knee height 1/8" x 1/2" x 2 1/2". See above for overall height. Arms can not be added together.
- Switch:** (2) Matte California Switchplate color.
- Beaming:** Limited aluminum. See above for finish.
- Barbed:** See below for details.

Lamping (by others)
Linear Fluorescent: 28W T5 or 60W T5HO, Mini-Digit

Electrical
Lengths shown in increments of 1/8" (see note for rounding) (see also Linear Barbed Electronic Ballast Universal voltage 120V-277V)

Edge	28W	277V	28W	277V
End Flange Width	1/8"	1/8"	1/8"	1/8"
Min. End Flange Width	1/8"	1/8"	1/8"	1/8"
Min. End Flange Depth	1/8"	1/8"	1/8"	1/8"
Min. Spacing Lamp (2" x 2")	1/8"	1/8"	1/8"	1/8"

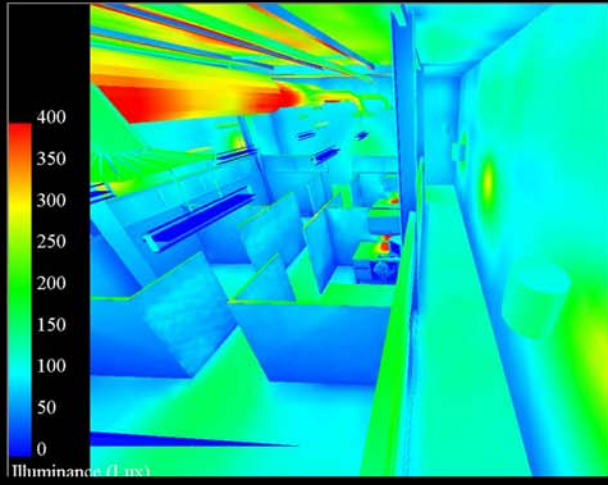
Options
Beaming: 3000K, 3500K, 4000K, 5000K, 6000K
JAMM: 1/8" x 1/8" x 1/8" (1/8" Dia.)
JAMM: 1/8" x 1/8" x 1/8" (1/8" Dia.)
Example: 48228ALU
Emergency: Emergency Backup (Photoluminescent battery pack, test switch and light, with 2" x 1/8" x 1/8" Dia.)
BLED: Output Emergency System ballast 120/277V, 60/28W, with 2" x 1/8" x 1/8" Dia.

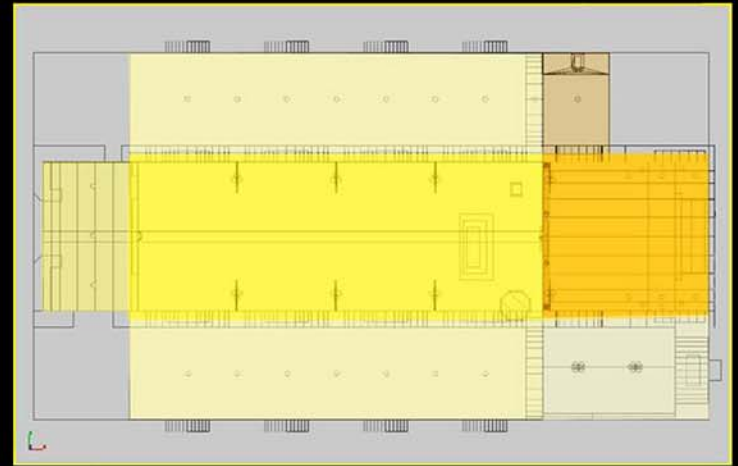
Labels
See below. Subject to Design Location.






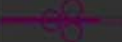



Job Information	Type
Job Name:	
Est. No.:	
Lamp Job:	
Notes:	

Lightolier a Kelly company www.lightolier.com
320 Airport Blvd., 5th Floor, Allentown, PA 18106-2712 • Tel: (610) 624-4710
We reserve the right to change details of design, materials and finish.
© 2008 Kelly Group LLC • All rights reserved.

LIGHTOLIER®





Manufacturer-Lamp-Luminaire	
	Erco 70W T6 Metal Halide Focal II Flood Light
	Erco 32W CFM GX24q3 Recessed LC Wash Light
	Erco Red LED Size 3 Nadir Recessed Floor Light
	Erco 70W T6 Orange Gelled Metal Halide Tesis Recessed Floor Light
	Erco Yellow LED Size 3 Nadir Recessed Floor Light
	Existing 3 90W Incandescent Pendant Hang Light
	Custom Designed 4 60W Incandescent Pendant Hang Light
	60W Incandescent Wall Sconce
	Erco 120W PAR38 Parabolic Spot Light



Partner Norman Tsui
Viz rendering by Norman

