

## **APPENDIX A**

Item # and Group	Project 1		Project 2		Project 3		Project 4		Project 5		# Projects Requiring This Item	# Projects Correcting This Item
Total Project Cost	17,000,000		4,250,000		10,000,000		2,000,000		2,000,000			
	Req. Action	Corrected	Req. Action	Corrected	Req. Action	Corrected	Req. Action	Corrected	Req. Action	Corrected		
General Review - Discipline Check												
1					1	1	1		1		3	1
2			1		1		1				3	0
3	1	1			1	1			1		3	2
4					1				1	1	2	1
5	1	1									1	1
6	1	1	1				1	1	1	1	4	3
7	1	1	1		1	1			1	1	4	3
8	1	1							1		2	1
9	1	1							1		2	1
10	1	1									1	1
11	1	1			1				1		3	1
12					1				1		2	0
13											0	0
14											0	0
General Review - Title Block												
1					1				1	1	2	1
2	1	1									1	1
3									1	1	1	1
4									1	1	1	1
5									1		1	0
General Review - Typ. Sheets												
1					1	1					1	1
2									1		1	0
3									1	1	1	1
4					1	1					1	1
5											0	0
6					1	1			1		2	1
7					1	1			1	1	2	2
8											0	0
9			1								1	0
10	1		1								2	0
11					1		1		1		3	0
12									1	1	1	1
13									1	1	1	1
14	1	1							1	1	2	2
15											0	0
16									1	1	1	1
17									1	1	1	1
18									1	1	1	1
19									1		1	0
20	1	1							1		2	1
21									1	1	1	1
22										1	0	1
23							1	1	1	1	2	2
24									1	1	1	1
25									1	1	1	1
Site and Civil Review												
1	1	1					1		1	1	3	2

2	1	1			1	1					2	2
3	1	1			1	1	1				3	2
4							1				1	0
5	1	1							1	1	2	2
6	1	1					1				2	1
7	1	1	1		1		1				4	1
8	1	1					1		1		3	1
9	1	1							1		2	1
10	1	1									1	1
11	1	1									1	1
12	1	1									1	1
13											0	0
14											0	0
15											0	0
16					1	1	1				2	1
17					1	1	1				2	1
18					1	1	1		1		3	1
19			1	1							1	1
20							1				1	0
21							1				1	0
22									1	1	1	1
23									1		1	0
24											0	0
25	1	1			1		1				3	1
26					1	1	1		1	1	3	2
27					1						1	0
28					1		1				2	0
29					1	1					1	1
30			1	1					1	1	2	2
31					1	1	1		1		3	1
32	1						1				2	0
33					1		1				2	0
34											0	0
35							1				1	0
36							1				1	0
Architectural Review												
1					1	1			1	1	2	2
2	1	1			1	1			1		3	2
3	1	1			1				1		3	1
4					1				1	1	2	1
5	1	1			1		1		1	1	4	2
6	1	1			1	1	1	1			3	3
7	1	1			1	1	1		1		4	2
8											0	0
9									1	1	1	1
10	1	1									1	1
11			1	1			1		1	1	3	2
<b>12</b>	<b>1</b>	<b>1</b>	<b>1</b>		<b>1</b>	<b>1</b>	<b>1</b>		<b>1</b>	<b>1</b>	<b>5</b>	<b>3</b>
13	1	1	1						1	1	3	2
14	1	1							1	1	2	2
15	1	1					1		1		3	1
16	1	1			1	1	1		1		4	2

17	1	1	1	1	1	1	1	1	1	1	1	5	5
18	1	1			1	1	1		1	1		4	3
19					1	1			1	1		2	2
20					1	1			1	1		2	2
21	1	1			1	1			1	1		3	3
22									1	1		1	1
23			1		1	1	1		1			4	1
24	1	1										1	1
25	1	1							1	1		2	2
26									1			1	0
27	1	1			1	1	1		1	1		4	3
28									1	1		1	1
29	1	1	1	1	1	1	1					3	3
30					1	1			1	1		2	2
Architectural Review - Schedules													
1										1	1	1	1
2												0	0
3							1		1	1		2	1
4					1	1	1	1	1			3	2
5			1		1	1			1	1		3	2
6			1		1	1						2	1
7			1	1	1	1			1	1		3	3
8			1	1	1	1			1	1		3	3
9									1	1		1	1
10									1	1		1	1
11									1	1		1	1
12	1	1							1	1		2	2
13									1	1		1	1
14			1	1	1	1			1	1		3	3
15			1	1	1	1			1	1		3	3
16			1		1	1	1		1	1		4	2
17					1							1	0
18					1	1	1					2	1
19					1	1						1	1
Architectural Review - Floor Plans													
1					1	1						1	1
2												0	0
3			1									1	0
4					1	1	1		1			3	1
5					1	1			1	1		2	2
6					1	1						1	1
7	1	1			1	1						2	2
8					1	1			1	1		2	2
9					1	1			1			2	1
10					1	1			1	1		2	2
11					1		1		1	1		3	1
12					1							1	0
13	1	1			1		1					3	1
14					1							1	0
15												0	0
16					1	1			1			2	1
17									1			1	0



6							1			1	0
7								1		1	0
8										0	0
9				1	1			1	1	2	2
10										0	0
11				1	1	1				2	1
12				1	1			1	1	2	2
13				1	1					1	1
14				1	1			1	1	2	2
15	1	1		1	1			1	1	3	3
16				1	1					1	1
Architectural Review - Enlarged Plans											
1				1			1		1	3	0
2				1			1		1	3	0
3									1	1	1
4				1	1			1		3	0
5	1	1			1					2	1
6					1		1			2	0
7										0	0
8				1	1	1		1		3	1
9				1	1	1		1		3	1
10	1			1	1	1		1		4	1
11				1	1	1		1		3	1
12										0	0
Architectural Review - Details											
1				1	1	1		1		3	1
2										0	0
3										0	0
4										0	0
5										0	0
Architectural Review - Reflected Ceiling Plans											
1				1	1	1		1	1	3	2
2				1	1			1	1	2	2
3	1	1						1	1	2	2
4								1	1	1	1
5					1		1	1	1	3	1
6					1		1	1	1	3	1
7					1		1	1	1	3	1
8				1	1	1		1	1	4	2
9				1		1		1	1	3	1
10	1	1						1	1	2	2
11					1	1		1	1	2	2
Structural Review											
1					1		1	1	1	3	1
2							1	1	1	2	1
3	1	1			1	1		1	1	3	3
4				1	1	1		1		3	1
5	1	1	1	1	1	1	1	1		4	3
6	1	1			1	1	1	1		3	2
7	1	1	1	1	1	1	1	1		5	3



5					1						1	0
6			1							1	2	0
7	1										1	0
8			1	1							1	1
9											0	0
10										1	1	0
11										1	1	0
12										1	1	0
13											0	0
14											0	0
15											0	0
16											0	0
17	1	1	1							1	3	1
18			1								1	0
HVAC Review												
1	1	1			1			1		1	4	1
2	1	1	1		1			1		1	5	1
3	1	1								1	2	1
4	1	1	1		1	1	1				4	2
5			1							1	2	0
6			1	1	1			1		1	4	1
7	1	1								1	2	1
8	1	1						1	1		2	2
9	1	1								1	2	2
10	1	1			1					1	3	1
11											0	0
12	1		1								2	0
13					1					1	2	1
14											0	0
15	1	1									1	1
16	1	1									1	1
17											0	0
Electrical Review - General												
1										1	1	1
2										1	1	1
3	1	1			1	1				1	3	3
4					1	1	1			1	3	2
5					1	1	1				2	1
6	1	1								1	2	1
7					1		1			1	3	0
8			1				1			1	3	1
Electrical Review - Site Documents												
1	1	1			1		1	1		1	4	3
2										1	1	1
3					1	1				1	2	2
4					1	1	1			1	3	2
5	1	1			1	1					2	2
6			1		1	1				1	3	2
Electrical Review - Lighting System Documents												
1	1	1			1	1					2	2



2												0	0
3					1	1	1			1		3	1
4												0	0
5	1	1			1	1				1		3	2
6					1		1			1		3	0
7												0	0
Electrical Review - Life Safety Systems													
1	1	1							1			2	1
2					1	1						1	1
3					1	1				1	1	2	2
4										1	1	1	1
5				1	1	1	1					2	2
6										1		1	0
7	1	1	1		1	1				1		4	2
8										1	1	1	1
9					1	1						1	1
Electrical Review - Power Systems													
1										1	1	1	1
2	1	1			1			1	1	1		4	2
3	1	1			1					1		3	1
4				1								1	0
5												0	0
6									1			1	0
7	1	1			1				1	1		4	2
8					1	1						1	1
9	1	1							1			2	1
Electrical Review - Low Voltage Systems													
1	1	1			1					1	1	3	2
2					1							1	0
3					1					1		2	0
4					1					1	1	2	1
5				1								1	0
Electrical Review - Specifications													
1												0	0
2									1	1		1	1
3												0	0
4						1						1	0
5	1								1			2	0
6												0	0
7										1	1	1	1
8				1					1	1		2	1
9						1						1	0
10						1	1					1	1
Electrical Review - Misc.													
1	1	1	1	1		1			1		1	5	2
2	1	1				1	1			1		3	2
3	1	1				1	1			1		3	2
4	1	1										1	1
5	1	1				1			1			3	1

6	1	1			1		1				3	1
7	1	1							1	1	2	2
8	1	1			1	1			1	1	3	3
9					1						1	0
10	1	1									1	1
11	1	1			1						2	1
12	1	1									1	1
13					1	1					1	1
14			1	1	1	1	1				3	2
15	1	1			1		1		1	1	4	2
16	1	1									1	1
17	1	1			1	1					2	2
18	1	1									1	1
19	1	1							1	1	2	2
Specification Review												
1	1	1	1				1		1	1	4	2
2	1	1	1		1	1	1		1	1	5	3
3	1	1	1	1			1		1	1	4	3
4	1	1					1	1		1	2	2
5			1		1	1	1		1	1	4	2
6									1		1	0
7					1	1			1	1	2	2
8			1		1	1			1		3	1
9			1		1	1	1		1	1	4	2
10			1		1	1	1		1	1	4	2
11											0	0
Roofing - Overall Roof Plan												
1							1		1		2	0
2							1		1	1	2	1
3			1	1	1				1	1	3	2
4					1	1	1		1		3	1
5	1	1	1		1		1		1		5	1
6							1				1	0
7					1		1				2	0
8					1	1	1		1		3	1
9											0	0
10					1		1				2	0
Roofing - Roof Details												
1			1		1		1		1		4	0
2			1		1	1			1	1	3	2
3			1				1		1	1	3	1
4			1								1	0
5			1								1	0
6			1								1	0
Interiors - Signage Schedule and Details												
1			1		1	1					2	1
2					1	1					1	1
3	1	1	1		1	1					3	2
4					1	1	1				2	1
5					1	1	1				2	1
6			1		1	1	1				3	1



13												0	0
14	1											1	0
15			1									1	0
16												0	0
17												0	0
18												0	0
Specific Items / Additional Notes													
Number of Project Specific Items Found/Corrected													
	581	579	140	85	154	96	134	26	92	60	1101	846	
Total Items (Req. Attention / Corrected)													
	718	706	231	116	364	231	290	42	310	199	1913	1294	
Number of Items Un-Corrected													
	12		115		133		248		111		619		
% Items Corrected													
	98.33		50.22		63.46		14.48		64.19		67.64		
Estimated Value of Items Found (\$)													
	550,000		275,000		315,000		295,000		410,000		369,000		
Estimated Value as Percent of Project													
	3.24		6.47		3.15		14.75		20.50				
Cost of A/E Related Change Orders (\$)													
	20,906		0		TBD		TBD		TBD				

## APPENDIX B

Table 1. Current Fixture Water Use Calculations								
Quantity	Use / Day	Item	Manufacturer	Model Number	Water Use	Daily Use (Gal/Day)	Cost (ea. \$)	Cost Total
103	1500	Water Closet	American Standard	2257.103	1.6 gpf	2400	249.00	25647.00
103	2100	Lavatory	Delta	525	2.3 gpm	4830	115.15	11860.45
101	4500	Shower Head	Delta	1323WS	2.5 gpm	11250	130.55	13185.55
48	1500	Kitchen Sink	Delta	100	2.3 gpm	1500	89.25	4284.00
<b>Totals</b>						<b>19980</b>		<b>\$54,977.00</b>

Table 2. Redesigned Fixture Water Use Calculations								
Quantity	Use / Day	Item	Manufacturer	Model Number	Water Use	Daily Use (Gal/Day)	Cost (ea. \$)	Cost Total
103	1500	Water Closet	Mansfield Plumbing	147-153	1.0 gpf	1500	414.50	42693.50
103	2100	Lavatory	Kingston Brass	KB-541-B	2.0 gpm	4200	66.07	6805.21
101	4500	Shower Head	Existing w/ NRGsaver	NS377	1.5 gpm	6750	135.05	13640.05
48	1500	Kitchen Sink	Delta	100	2.3 gpm	1500	89.25	4284
<b>Totals</b>						<b>13950</b>		<b>\$67,422.76</b>

Table 3. Usage Assumptions				
# People	Fixture	Assumption		
300	Water Closet	5 Flushes/day/person	1500	Flushes/day
300	Lavatory	7 uses/day/person (1 Min. Ea.)	2100	Minutes/day
300	Shower Head	15 Minutes/day/person	4500	Minutes/day
300	Kitchen Sink	5 gallons/day/person	1500	gal/day

Table 4. Water and Sewer Charge for Philadelphia

Quantity Charges			
Monthly Water Charge	Water Service Charge per Mcf	Monthly Water Usage	Wastewater Services Charge per Mcf
<b>First 2 Mcf</b>	<b>\$19.91</b>	<b>All billable water usage</b>	<b>\$15.99</b>
<b>Next 98 Mcf</b>	<b>\$15.77</b>		
<b>Next 1,900 Mcf</b>	<b>\$14.03</b>		
<b>Next 2,000 Mcf</b>	<b>\$10.50</b>		

## APPENDIX C

### Structural Calculations:

#### CIP Detailed Estimate

Strip Footings	width	depth	conc. Cy/ft	steel wt/ft	Length(ft.)	material	Labor	Equip.	total	total w/O&P	Total Cost
F20.12	24"	12"	0.074	2.67	415	8.36	5.62	0.04	14.02	18.00	7470.00
F36.12	3'6"	12"	0.13	4.9	688	12.09	6.83	0.04	18.96	23.92	16456.96
F50.14	5'	14"		11.47	239	4.36	3.33	0.00	7.69	10.32	2466.48
			0.216		239	17.50	9.72	0.08	27.28	34.37	8215.10
F66.16	6'6"	16"		17.47	139	6.64	5.07	0.00	11.71	15.72	2185.08
			0.321		139	26.00	14.45	0.09	40.54	51.08	7100.18
F66.36	6'6"	36"		146.81	112	52.85	24.59	0.00	77.44	99.00	11088.00
			0.722		112	58.48	32.49	0.21	91.18	114.89	12867.32
											\$67,849.12

Col Footings	size	depth	conc. Cy	steel wt	Number	material	Labor	Equip.	total	total w/O&P	Total Cost
F30	3'x3'	12"	0.333		1	26.97	14.99	0.10	42.05	53.41	53.41
				25.03	1	9.51	7.26		16.77	21.30	21.30
F40	4'x4'	12"	0.693		6	56.13	31.19	0.20	87.52	111.15	666.89
				41.72	6	15.85	12.10		27.95	35.50	213.00
F50	5'x5'	12"	0.926		8	75.01	41.67	0.27	116.94	148.52	1188.16
				62.58	8	23.78	18.15		41.93	53.25	425.99
F86	8'6"x8'6"	18"	4.01		5	324.81	180.45	1.16	506.42	643.16	3215.79
				347.48	5	132.04	100.77		232.81	295.67	1478.35
F100120	10'x12'	26"	9.63		3	780.03	433.35	2.79	1216.17	1544.54	4833.62
				816	3	293.76	136.68		430.44	546.66	1639.98
F5080	5'x8'	18"	2.22		1	179.82	99.90	0.64	280.36	356.06	356.06
				180.09	1	72.23	55.13		127.36	161.75	161.75
											\$14,054.29

Piers	size	Total (ft.)	conc. Cy	steel wt		material	Labor	Equip.	total	total w/O&P	Total Cost
P1	20" x 20"	86.5	0.103			8.34	4.64	0.03	13.01	16.52	1428.98
				18.79		7.14	5.45		12.59	15.99	1383.00
P2	26" x 26"	11	0.174			14.09	7.83	0.05	21.97	27.91	306.98
				27.72		10.53	8.04		18.57	23.59	259.46
											\$3,378.42

Slab on Grade	s.f.					material	Labor	Equip.	total	total w/O&P	Total Cost
5"	2176					1.31	0.67	0.01	1.99	2.43	5287.68
4"	18693					1.07	0.65	0.01	1.73	2.15	40189.95
6x6 W1.4xW1.4 V	208.69	c.s.f.				19.35	17.35	0	36.7	50	10434.50
											\$55,912.13

CIP CONCRETE TOTAL \$141,193.96

**Grouting First Floor Walls**

Exterior	11	640	7040	0.85	1.44	0.2	2.49	3.34	23513.60
Interior	11	810	8910	0.85	1.44	0.2	2.49	3.34	29759.40
								Total	\$53,273.00

**8" CMU**

Exterior	10.33	1876	19379.08	2.48	3.55		6.03	8.15	157939.50
Exterior	10.67	938	10008.46	2.48	3.55		6.03	8.15	81568.95
Interior	10.33	1620	16734.6	1.63	3.45		5.08	7.05	117978.93
Interior	10.67	810	8642.7	1.63	3.45		5.08	7.05	60931.04
Exterior	11	640	7040	2.48	3.55		6.03	8.15	57376.00
Interior	11	810	8910	1.63	3.45		5.08	7.05	62815.50
								Total	\$538,609.92

TOTAL MASONRY COST \$591,882.92

**Precast Plank**

Width(ft)	Length(ft)	# Pieces	S.F.
8	15	32	3840
8	18.67	32	4779.52
8	18	32	4608
8	12	4	384
8	14	4	448
8	11	4	352
8	23	48	8832
8	22	28	4928
8	33	40	10560
8	32	16	4096
8	15	16	1920
8	23.5	28	5264
8	30.5	28	6832
8	23	56	10304
8	30	56	13440
8	15.5	16	1984
8	21.5	16	2752
8	15.5	36	4464
8	14	8	896
8	19.5	8	1248
8	19	20	3040
8	19	21	3192
8	28	18	4032
8	11.25	9	810
Total			103005.5

**Precast Hollow Plank, 8" thickness**

mat	lab	equip	total	total w/O&P	Total S.F.	Total Cost
5.45	0.84	0.45	6.74	7.95	103005.5	\$818,893.88

Columns									
	Number	Shape	# floors	mat	labor	equip	total	total w/O&P	Total Cost
C1	2	HSS 10x10x5/8	2	950	43	27.5	1020.5	1150	4600.00
	2	HSS 10x10x1/2	2	950	43	27.5	1020.5	1150	4600.00
C2	1	HSS 8x8x5/8	2	950	43	27.5	1020.5	1150	2300.00
	1	HSS 8x8x5/8	2	950	43	27.5	1020.5	1150	2300.00
C4	2	HSS 4x4x5/16	4	144	35.5	23	202.5	246	1968.00
C5	11	W10 x 60	4	65.5	2.1	1.35	68.95	77	3388.00
C7	2	HSS 6x6x5/16	5	236	38.5	24.5	299	370	3700.00
C8	4	W10 x 39	3	42	1.97	1.25	45.22	58	696.00
Total									\$23,552.00

Lintels									
	# Lintels	Shape	Pcs/Lintel	mat	labor	equip	total	total w/O&P	Total Cost
W8 x 31	4		1	30	3.76		36.17	42	168.00
L1	19	5x3	2	43	27		70	89	3382.00
L2	1	4x3	2	43	27		70	89	178.00
L2B	10	4x3	3	64.5	40.5		105	133.5	4005.00
L2C	5	4x3 & 6x3	3	64.5	40.5		105	133.5	2002.50
L3	7	6x3	2	78	47		125	158	2212.00
L3B	12	6x3	3	117	70.5		187.5	237	8532.00
L4	12	7x4	2	85.8	51.7		137.5	173.8	4171.20
Total									\$24,650.70

Structural Shapes									
	Length(ft.)			mat	labor	equip	total	total w/O&P	Total Cost
W8 x 24	24			23	3.76	2.41	29.17	34.5	828.00
W12 x 16	18			13.5	2.35	1.51	17.36	20.5	369.00
W12 X 19	102			21	2.35	1.51	24.86	29	2958.00
W12 X 22	38.5			21	2.35	1.51	24.86	29	1116.50
W12 x 30	30			33.5	2.56	1.64	37.7	43	1290.00
W12 x 45	16			48	2.76	1.77	52.53	59.5	952.00
W12 X 50	11			48	2.76	1.77	52.53	59.5	654.50
W14 X 22	29.33			25	2.09	1.34	28.43	32.5	953.23
W14 x 26	47			25	2.09	1.34	28.43	32.5	1527.50
W14 x 61	78			71	2.72	1.74	75.46	85	6630.00
W16 X 36	14.67			38.5	2.59	1.66	42.75	49	718.83
HSS 10X8X5/16	16			950	43	27.5	1020.5	1150	18400.00
Total									\$36,397.56

TOTAL STEEL COST \$84,600.26

Structural Estimate Totals	
TOTAL CIP CONCRETE	\$141,193.96
TOTAL MASONRY COST	\$591,882.92
TOTAL PRECAST COST	\$818,893.88
TOTAL STEEL COST	\$84,600.26
Structural Total	\$1,636,571.02

Location Factor 1.13

**Structural Project Total = \$1,849,325.25**

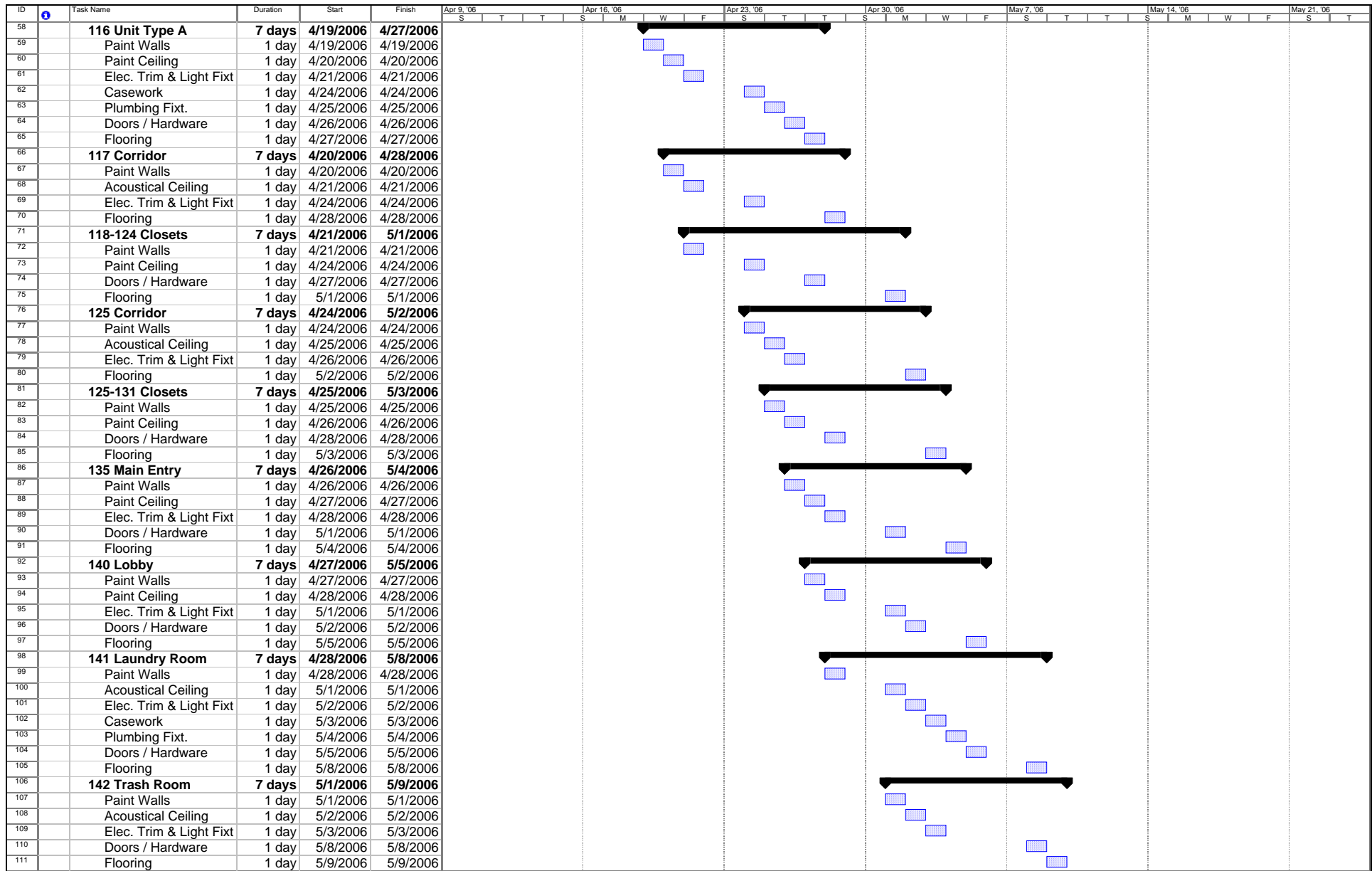


**SIPS SCHEDULE**

ID	Task Name	Duration	Start	Finish	Apr 9 '06	Apr 16 '06	Apr 23 '06	Apr 30 '06	May 7 '06	May 14 '06	May 21 '06									
					S	T	T	S	M	W	F	S	T	T	S	M	W	F	S	T
1	<b>Finishes</b>	<b>33 days</b>	<b>4/10/2006</b>	<b>5/24/2006</b>	[Gantt bar from 4/10/2006 to 5/24/2006]															
2	<b>100-104 Clubhouse</b>	<b>7 days</b>	<b>4/10/2006</b>	<b>4/18/2006</b>	[Gantt bar from 4/10/2006 to 4/18/2006]															
3	Paint Walls	1 day	4/10/2006	4/10/2006	[Task bar]															
4	Acoustical Ceiling	1 day	4/11/2006	4/11/2006		[Task bar]														
5	Elec. Trim & Light Fixt	1 day	4/12/2006	4/12/2006			[Task bar]													
6	Casework	1 day	4/13/2006	4/13/2006				[Task bar]												
7	Plumbing Fixt.	1 day	4/14/2006	4/14/2006					[Task bar]											
8	Doors / Hardware	1 day	4/17/2006	4/17/2006						[Task bar]										
9	Flooring	1 day	4/18/2006	4/18/2006							[Task bar]									
10	<b>110 Unit Type E</b>	<b>7 days</b>	<b>4/11/2006</b>	<b>4/19/2006</b>	[Gantt bar from 4/11/2006 to 4/19/2006]															
11	Paint Walls	1 day	4/11/2006	4/11/2006	[Task bar]															
12	Paint Ceiling	1 day	4/12/2006	4/12/2006		[Task bar]														
13	Elec. Trim & Light Fixt	1 day	4/13/2006	4/13/2006			[Task bar]													
14	Casework	1 day	4/14/2006	4/14/2006				[Task bar]												
15	Plumbing Fixt.	1 day	4/17/2006	4/17/2006					[Task bar]											
16	Doors / Hardware	1 day	4/18/2006	4/18/2006						[Task bar]										
17	Flooring	1 day	4/19/2006	4/19/2006							[Task bar]									
18	<b>111 Unit Type A</b>	<b>7 days</b>	<b>4/12/2006</b>	<b>4/20/2006</b>	[Gantt bar from 4/12/2006 to 4/20/2006]															
19	Paint Walls	1 day	4/12/2006	4/12/2006	[Task bar]															
20	Paint Ceiling	1 day	4/13/2006	4/13/2006		[Task bar]														
21	Elec. Trim & Light Fixt	1 day	4/14/2006	4/14/2006			[Task bar]													
22	Casework	1 day	4/17/2006	4/17/2006				[Task bar]												
23	Plumbing Fixt.	1 day	4/18/2006	4/18/2006					[Task bar]											
24	Doors / Hardware	1 day	4/19/2006	4/19/2006						[Task bar]										
25	Flooring	1 day	4/20/2006	4/20/2006							[Task bar]									
26	<b>112 Unit Type A</b>	<b>7 days</b>	<b>4/13/2006</b>	<b>4/21/2006</b>	[Gantt bar from 4/13/2006 to 4/21/2006]															
27	Paint Walls	1 day	4/13/2006	4/13/2006	[Task bar]															
28	Paint Ceiling	1 day	4/14/2006	4/14/2006		[Task bar]														
29	Elec. Trim & Light Fixt	1 day	4/17/2006	4/17/2006			[Task bar]													
30	Casework	1 day	4/18/2006	4/18/2006				[Task bar]												
31	Plumbing Fixt.	1 day	4/19/2006	4/19/2006					[Task bar]											
32	Doors / Hardware	1 day	4/20/2006	4/20/2006						[Task bar]										
33	Flooring	1 day	4/21/2006	4/21/2006							[Task bar]									
34	<b>113 Unit Type A (KT)</b>	<b>7 days</b>	<b>4/14/2006</b>	<b>4/24/2006</b>	[Gantt bar from 4/14/2006 to 4/24/2006]															
35	Paint Walls	1 day	4/14/2006	4/14/2006	[Task bar]															
36	Paint Ceiling	1 day	4/17/2006	4/17/2006		[Task bar]														
37	Elec. Trim & Light Fixt	1 day	4/18/2006	4/18/2006			[Task bar]													
38	Casework	1 day	4/19/2006	4/19/2006				[Task bar]												
39	Plumbing Fixt.	1 day	4/20/2006	4/20/2006					[Task bar]											
40	Doors / Hardware	1 day	4/21/2006	4/21/2006						[Task bar]										
41	Flooring	1 day	4/24/2006	4/24/2006							[Task bar]									
42	<b>114 Unit Type A (KT)</b>	<b>7 days</b>	<b>4/17/2006</b>	<b>4/25/2006</b>	[Gantt bar from 4/17/2006 to 4/25/2006]															
43	Paint Walls	1 day	4/17/2006	4/17/2006	[Task bar]															
44	Paint Ceiling	1 day	4/18/2006	4/18/2006		[Task bar]														
45	Elec. Trim & Light Fixt	1 day	4/19/2006	4/19/2006			[Task bar]													
46	Casework	1 day	4/20/2006	4/20/2006				[Task bar]												
47	Plumbing Fixt.	1 day	4/21/2006	4/21/2006					[Task bar]											
48	Doors / Hardware	1 day	4/24/2006	4/24/2006						[Task bar]										
49	Flooring	1 day	4/25/2006	4/25/2006							[Task bar]									
50	<b>115 Unit Type C</b>	<b>7 days</b>	<b>4/18/2006</b>	<b>4/26/2006</b>	[Gantt bar from 4/18/2006 to 4/26/2006]															
51	Paint Walls	1 day	4/18/2006	4/18/2006	[Task bar]															
52	Paint Ceiling	1 day	4/19/2006	4/19/2006		[Task bar]														
53	Elec. Trim & Light Fixt	1 day	4/20/2006	4/20/2006			[Task bar]													
54	Casework	1 day	4/21/2006	4/21/2006				[Task bar]												
55	Plumbing Fixt.	1 day	4/24/2006	4/24/2006					[Task bar]											
56	Doors / Hardware	1 day	4/25/2006	4/25/2006						[Task bar]										
57	Flooring	1 day	4/26/2006	4/26/2006							[Task bar]									

Project: SIPS Schedule  
Date: 3/22/2006

Task  Milestone  Rolled Up Task  Rolled Up Progress  External Tasks  Group By Summary   
 Progress  Summary  Rolled Up Milestone  Split  Project Summary  Deadline 



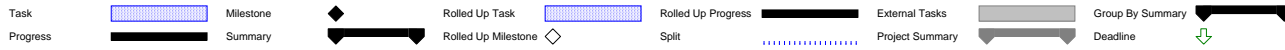
Project: SIPS Schedule  
Date: 3/22/2006

Task Milestone Rolled Up Task Rolled Up Progress External Tasks Group By Summary

Progress Summary Rolled Up Milestone Split Project Summary Deadline

ID	Task Name	Duration	Start	Finish	Apr 9 '06							Apr 16 '06							Apr 23 '06							Apr 30 '06							May 7 '06							May 14 '06							May 21 '06						
					S	T	T	S	M	W	F	S	T	T	S	M	W	F	S	T	T	S	M	W	F	S	T	T	S	M	W	F	S	T	T	S	M	W	F	S	T	T	S	M	W	F							
112	<b>143 Elevator Room</b>	<b>7 days</b>	<b>5/2/2006</b>	<b>5/10/2006</b>																																																	
113	Paint Walls	1 day	5/2/2006	5/2/2006																																																	
114	Paint Ceiling	1 day	5/3/2006	5/3/2006																																																	
115	Elec. Trim & Light Fixt	1 day	5/4/2006	5/4/2006																																																	
116	Doors / Hardware	1 day	5/9/2006	5/9/2006																																																	
117	Flooring	1 day	5/10/2006	5/10/2006																																																	
118	<b>150 Unit Type G East</b>	<b>7 days</b>	<b>5/3/2006</b>	<b>5/11/2006</b>																																																	
119	Paint Walls	1 day	5/3/2006	5/3/2006																																																	
120	Paint Ceiling	1 day	5/4/2006	5/4/2006																																																	
121	Elec. Trim & Light Fixt	1 day	5/5/2006	5/5/2006																																																	
122	Casework	1 day	5/8/2006	5/8/2006																																																	
123	Plumbing Fixt.	1 day	5/9/2006	5/9/2006																																																	
124	Doors / Hardware	1 day	5/10/2006	5/10/2006																																																	
125	Flooring	1 day	5/11/2006	5/11/2006																																																	
126	<b>150 Unit Type G West</b>	<b>7 days</b>	<b>5/4/2006</b>	<b>5/12/2006</b>																																																	
127	Paint Walls	1 day	5/4/2006	5/4/2006																																																	
128	Paint Ceiling	1 day	5/5/2006	5/5/2006																																																	
129	Elec. Trim & Light Fixt	1 day	5/8/2006	5/8/2006																																																	
130	Casework	1 day	5/9/2006	5/9/2006																																																	
131	Plumbing Fixt.	1 day	5/10/2006	5/10/2006																																																	
132	Doors / Hardware	1 day	5/11/2006	5/11/2006																																																	
133	Flooring	1 day	5/12/2006	5/12/2006																																																	
134	<b>152 Grad. Assist. Unit</b>	<b>7 days</b>	<b>5/5/2006</b>	<b>5/15/2006</b>																																																	
135	Paint Walls	1 day	5/5/2006	5/5/2006																																																	
136	Paint Ceiling	1 day	5/8/2006	5/8/2006																																																	
137	Elec. Trim & Light Fixt	1 day	5/9/2006	5/9/2006																																																	
138	Casework	1 day	5/10/2006	5/10/2006																																																	
139	Plumbing Fixt.	1 day	5/11/2006	5/11/2006																																																	
140	Doors / Hardware	1 day	5/12/2006	5/12/2006																																																	
141	Flooring	1 day	5/15/2006	5/15/2006																																																	
142	<b>153 Unit Type A</b>	<b>7 days</b>	<b>5/8/2006</b>	<b>5/16/2006</b>																																																	
143	Paint Walls	1 day	5/8/2006	5/8/2006																																																	
144	Paint Ceiling	1 day	5/9/2006	5/9/2006																																																	
145	Elec. Trim & Light Fixt	1 day	5/10/2006	5/10/2006																																																	
146	Casework	1 day	5/11/2006	5/11/2006																																																	
147	Plumbing Fixt.	1 day	5/12/2006	5/12/2006																																																	
148	Doors / Hardware	1 day	5/15/2006	5/15/2006																																																	
149	Flooring	1 day	5/16/2006	5/16/2006																																																	
150	<b>154 Laundry Room</b>	<b>7 days</b>	<b>5/9/2006</b>	<b>5/17/2006</b>																																																	
151	Paint Walls	1 day	5/9/2006	5/9/2006																																																	
152	Acoustical Ceiling	1 day	5/10/2006	5/10/2006																																																	
153	Elec. Trim & Light Fixt	1 day	5/11/2006	5/11/2006																																																	
154	Casework	1 day	5/12/2006	5/12/2006																																																	
155	Plumbing Fixt.	1 day	5/15/2006	5/15/2006																																																	
156	Doors / Hardware	1 day	5/16/2006	5/16/2006																																																	
157	Flooring	1 day	5/17/2006	5/17/2006																																																	
158	<b>155 Corridor</b>	<b>7 days</b>	<b>5/10/2006</b>	<b>5/18/2006</b>																																																	
159	Paint Walls	1 day	5/10/2006	5/10/2006																																																	
160	Acoustical Ceiling	1 day	5/11/2006	5/11/2006																																																	
161	Elec. Trim & Light Fixt	1 day	5/12/2006	5/12/2006																																																	
162	Flooring	1 day	5/18/2006	5/18/2006																																																	
163	<b>157-159 Closets</b>	<b>7 days</b>	<b>5/11/2006</b>	<b>5/19/2006</b>																																																	
164	Paint Walls	1 day	5/11/2006	5/11/2006																																																	
165	Paint Ceiling	1 day	5/12/2006	5/12/2006																																																	
166	Doors / Hardware	1 day	5/17/2006	5/17/2006																																																	
167	Flooring	1 day	5/19/2006	5/19/2006																																																	

Project: SIPS Schedule  
Date: 3/22/2006

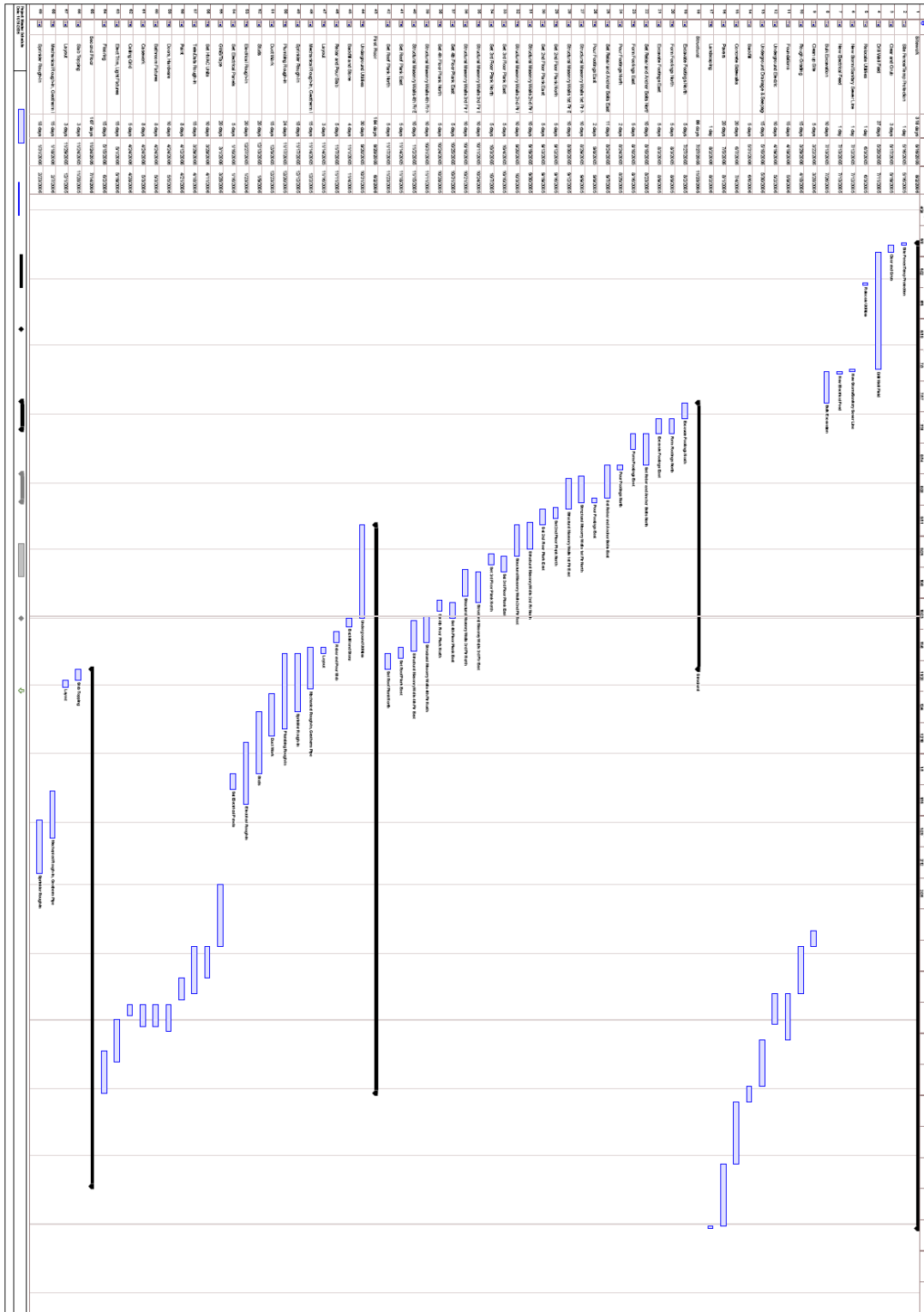


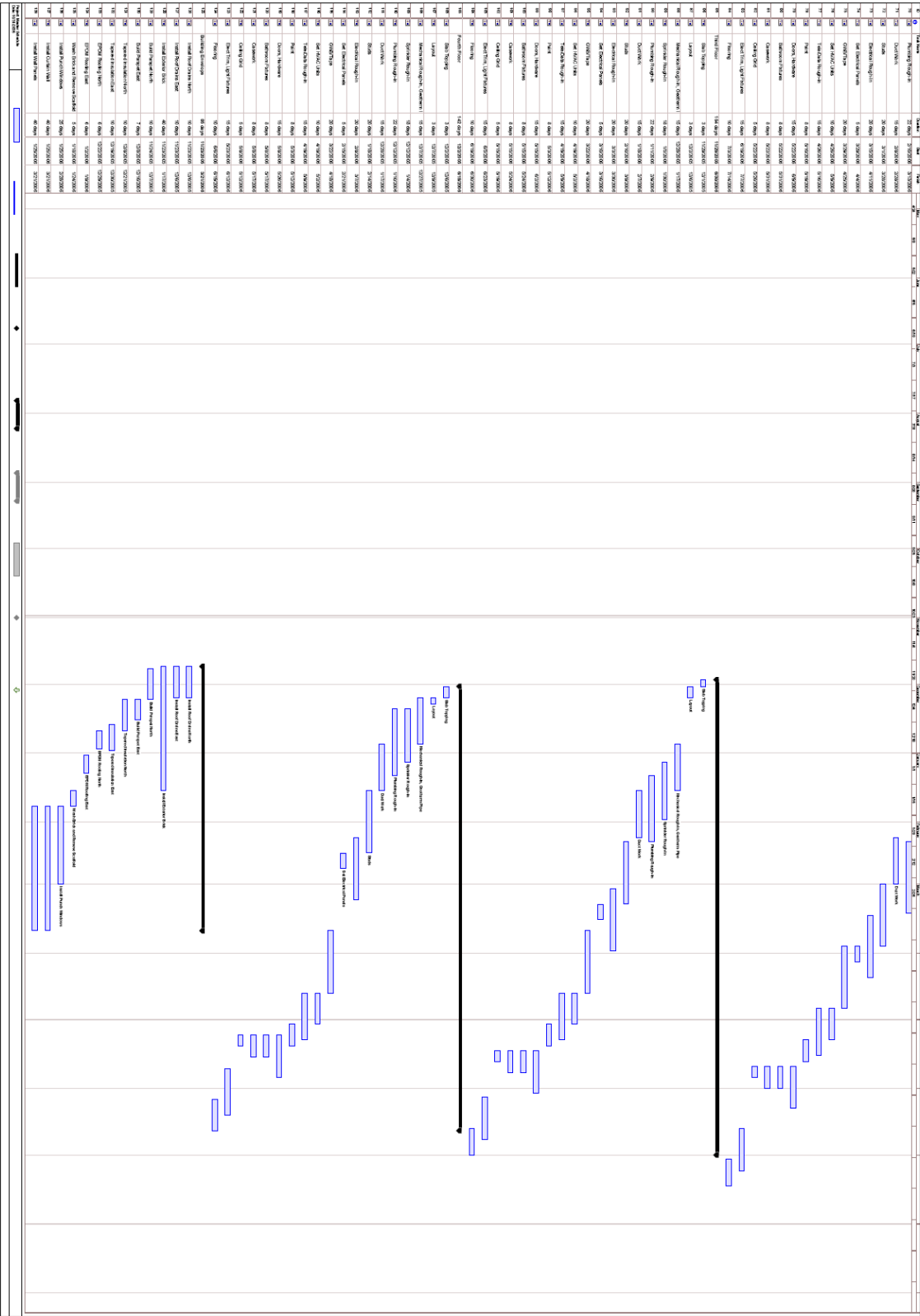
ID	Task Name	Duration	Start	Finish	Apr. '06							May '06														
					S	T	T	S	M	W	F	S	T	T	S	M	W	F								
168	<b>160 Unit Type B</b>	<b>7 days</b>	<b>5/12/2006</b>	<b>5/22/2006</b>																						
169	Paint Walls	1 day	5/12/2006	5/12/2006																						
170	Paint Ceiling	1 day	5/15/2006	5/15/2006																						
171	Elec. Trim & Light Fixt	1 day	5/16/2006	5/16/2006																						
172	Casework	1 day	5/17/2006	5/17/2006																						
173	Plumbing Fixt.	1 day	5/18/2006	5/18/2006																						
174	Doors / Hardware	1 day	5/19/2006	5/19/2006																						
175	Flooring	1 day	5/22/2006	5/22/2006																						
176	<b>165 Mechanical Room</b>	<b>7 days</b>	<b>5/15/2006</b>	<b>5/23/2006</b>																						
177	Paint Walls	1 day	5/15/2006	5/15/2006																						
178	Paint Ceiling	1 day	5/16/2006	5/16/2006																						
179	Elec. Trim & Light Fixt	1 day	5/17/2006	5/17/2006																						
180	Doors / Hardware	1 day	5/22/2006	5/22/2006																						
181	Flooring	1 day	5/23/2006	5/23/2006																						
182	<b>166 Electrical Room</b>	<b>7 days</b>	<b>5/16/2006</b>	<b>5/24/2006</b>																						
183	Paint Walls	1 day	5/16/2006	5/16/2006																						
184	Paint Ceiling	1 day	5/17/2006	5/17/2006																						
185	Elec. Trim & Light Fixt	1 day	5/18/2006	5/18/2006																						
186	Doors / Hardware	1 day	5/23/2006	5/23/2006																						
187	Flooring	1 day	5/24/2006	5/24/2006																						

Project: SIPS Schedule Date: 3/22/2006	Task		Milestone		Rolled Up Task		Rolled Up Progress		External Tasks		Group By Summary	
	Progress		Summary		Rolled Up Milestone		Split		Project Summary		Deadline	

# APPENDIX D

Figure 1. Detailed Construction Schedule (per HSC Plan)





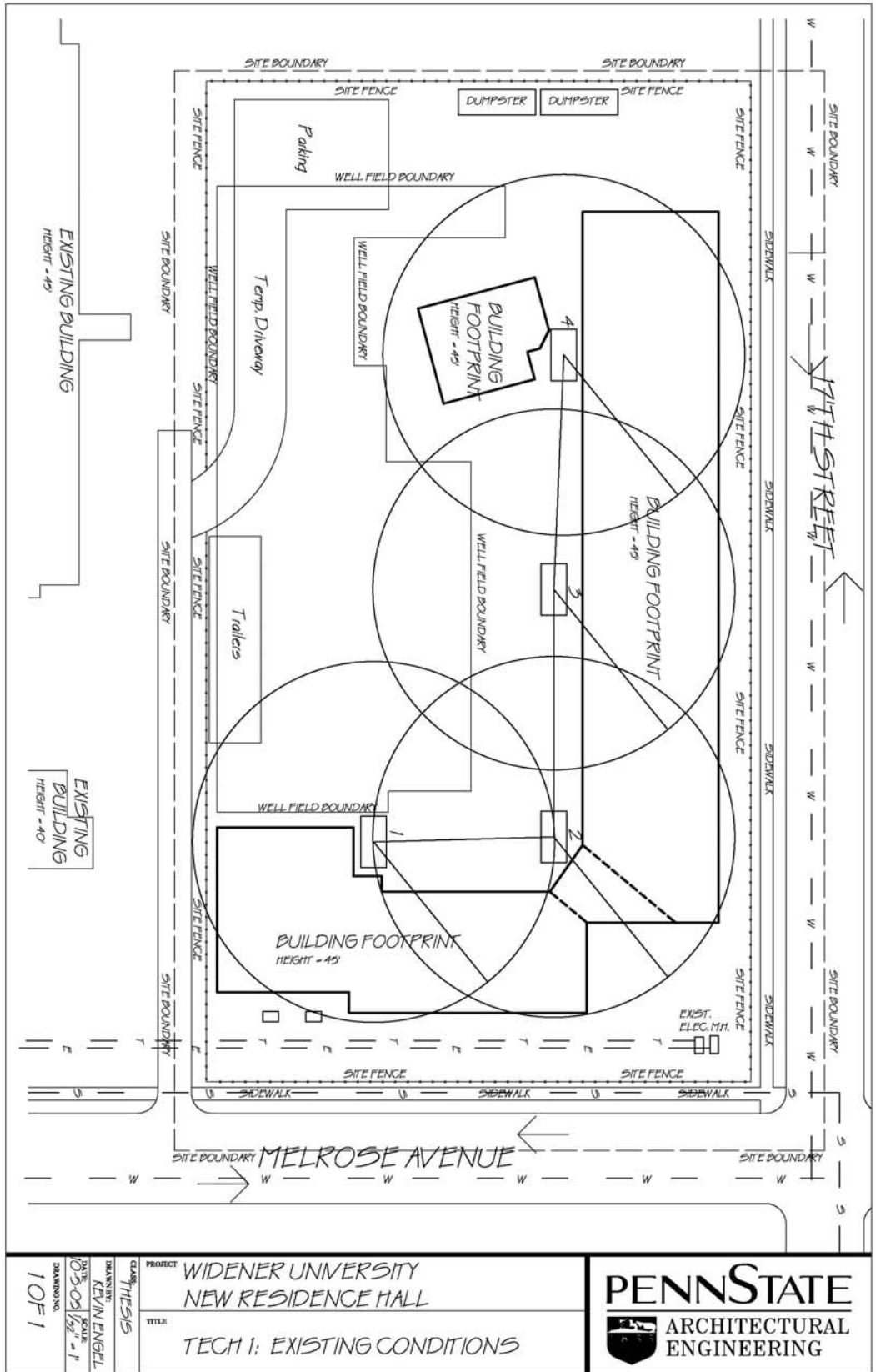


Figure 2. Existing conditions and construction methods site plan