

---

# **Harris Theater for Music and Dance**

*Lindsey K. Beane*

# Building Overview

## Site Interaction

### Millennium Park in Chicago, IL



Harris Theater  
for Music  
and Dance

# Building Overview

## Statistics

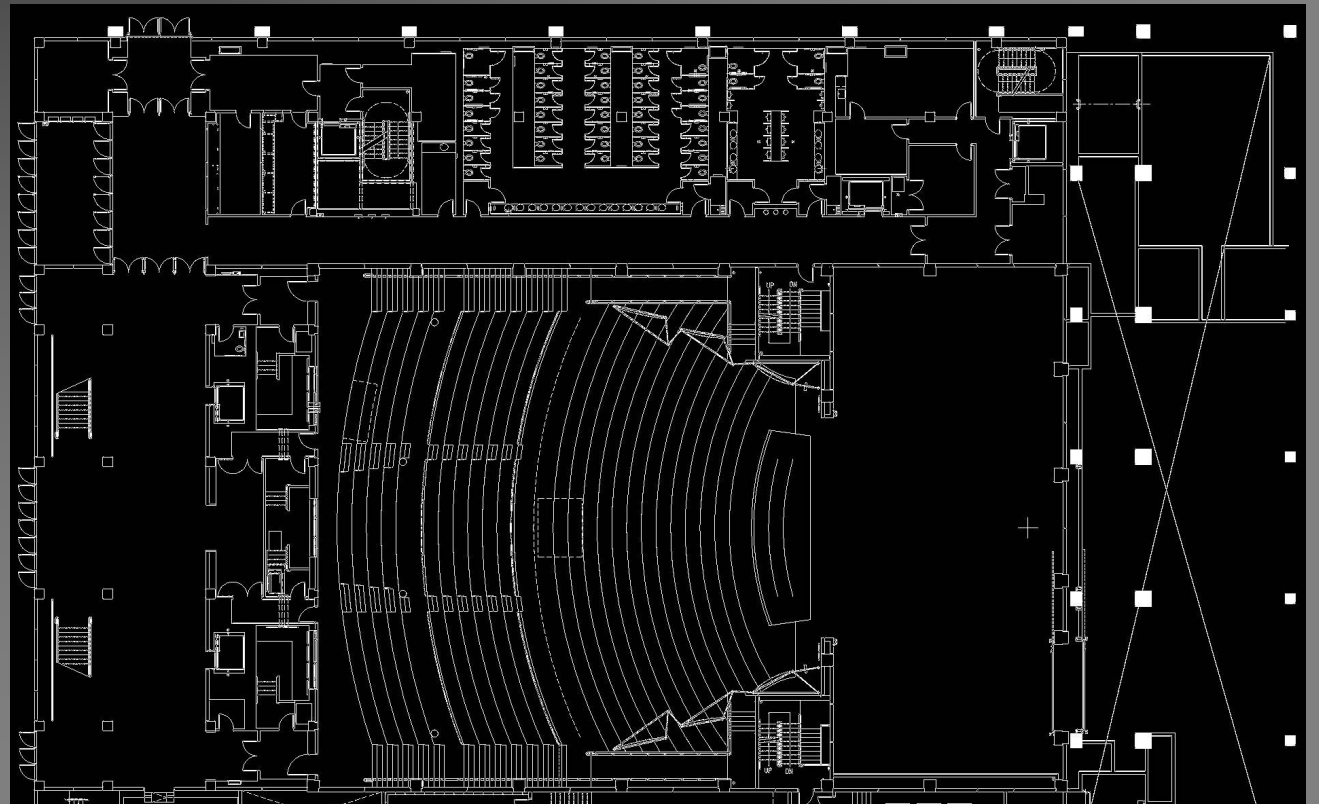


- Architect: Hammond Beeby Rupert Ainge
- 130,000 ft<sup>2</sup>
- 1 story above grade, 8 partial stories
- Estimated cost \$39 million

# Building Overview

## Building Uses

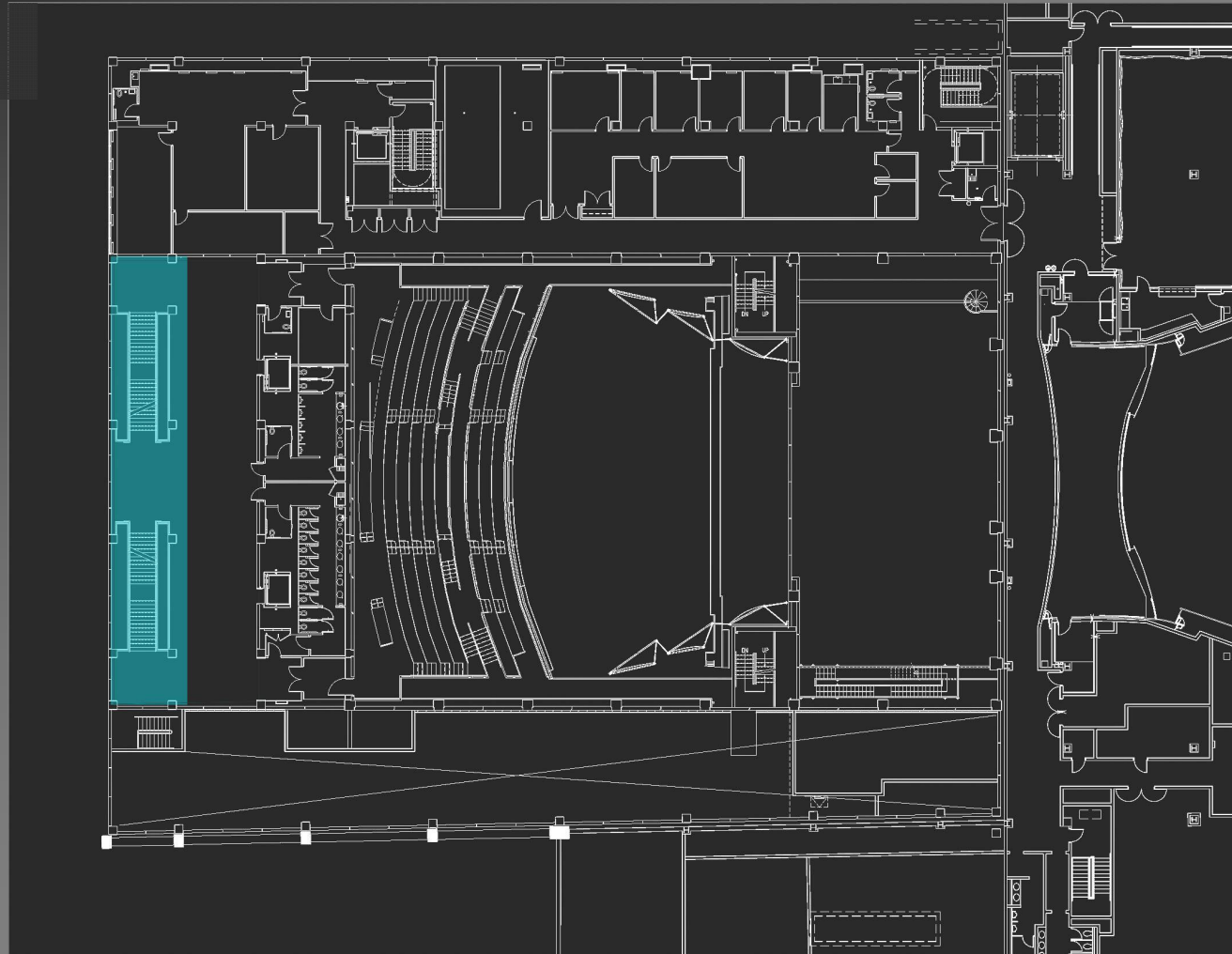
- Performance Space
- Rehearsal Space
- Ticket Box Office
- Offices



# Building Overview

## Scope of Lighting Design

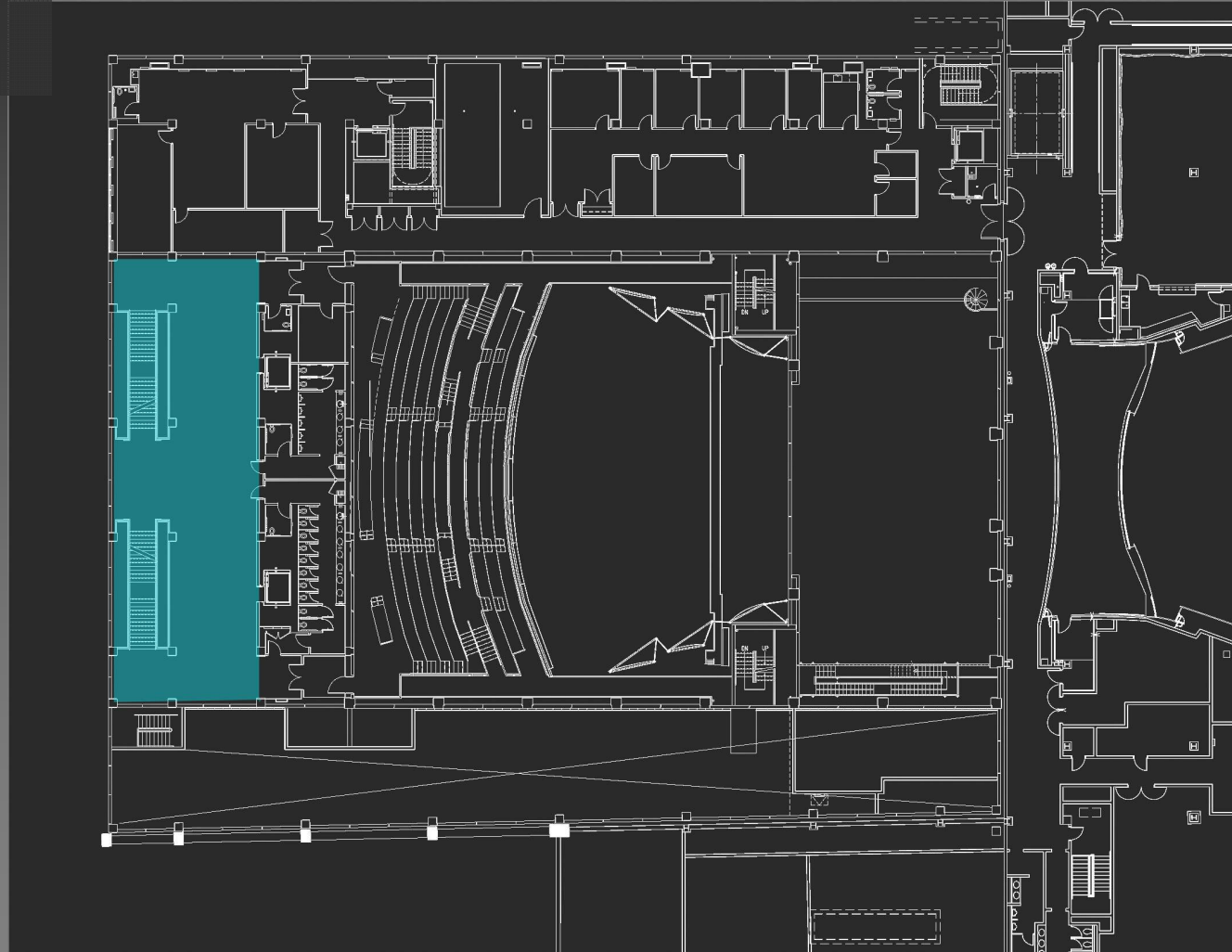
Entrance



# Building Overview

## Scope of Lighting Design

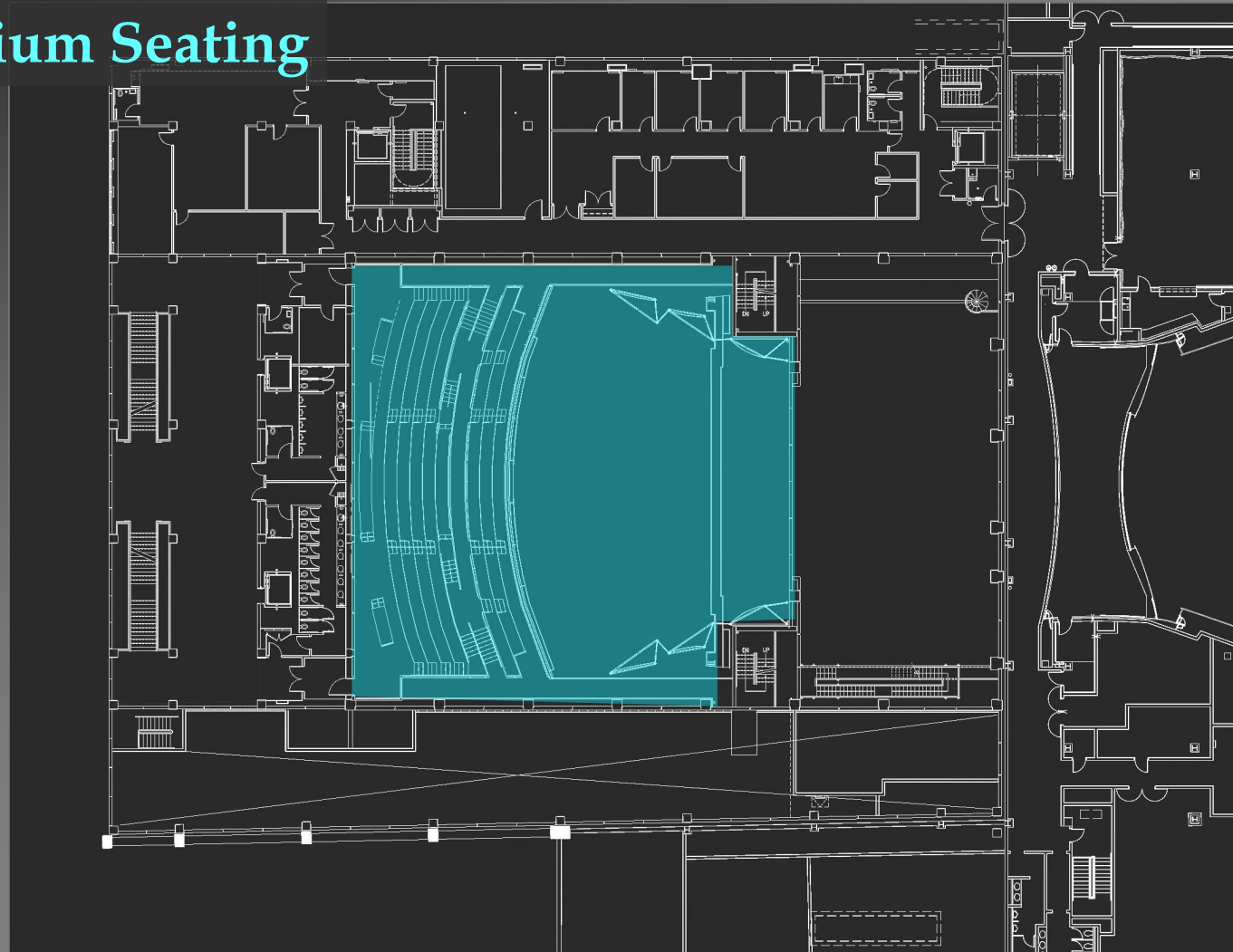
Lobby



# Building Overview

## Scope of Lighting Design

### Auditorium Seating

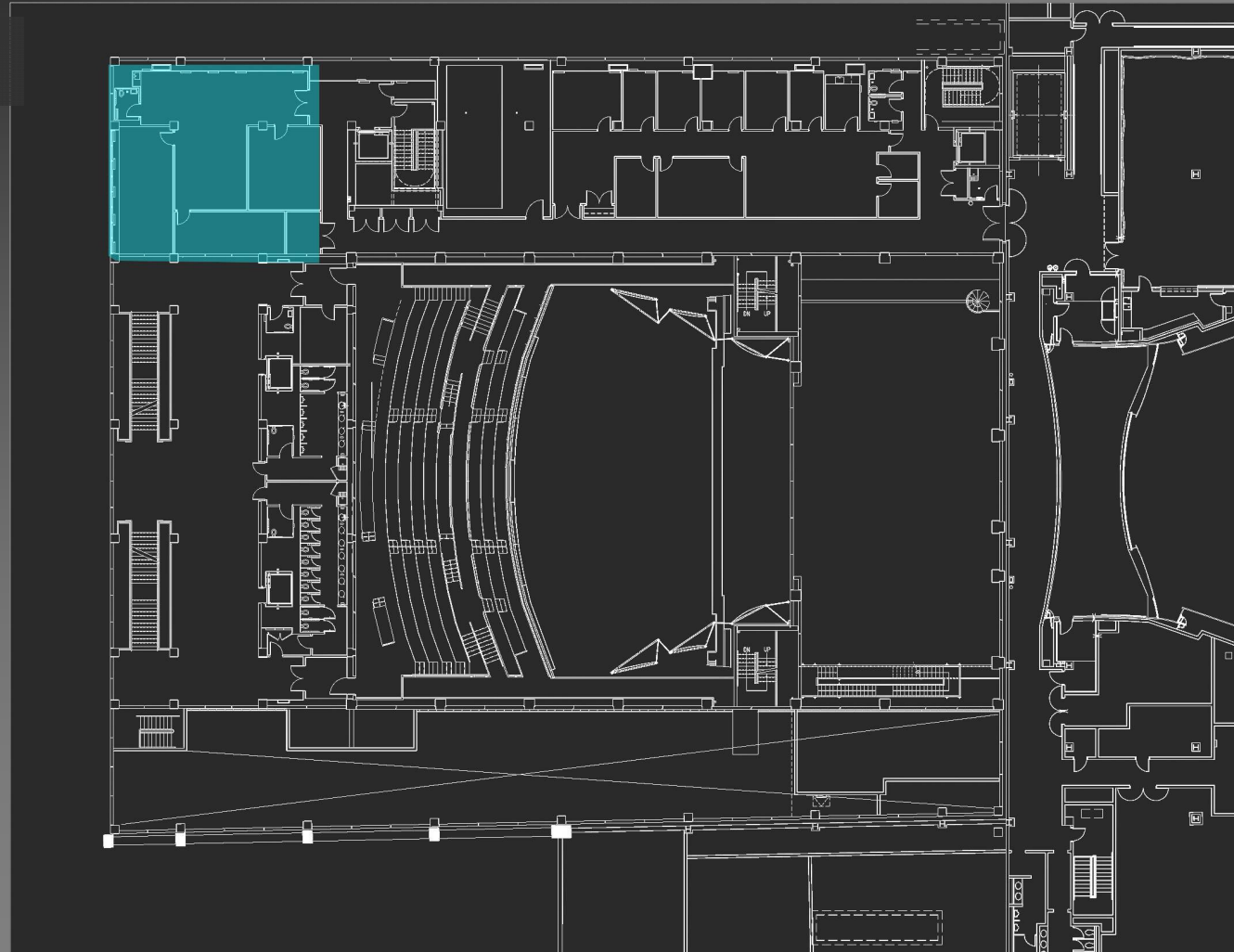




# Building Overview

## Scope of Lighting Design

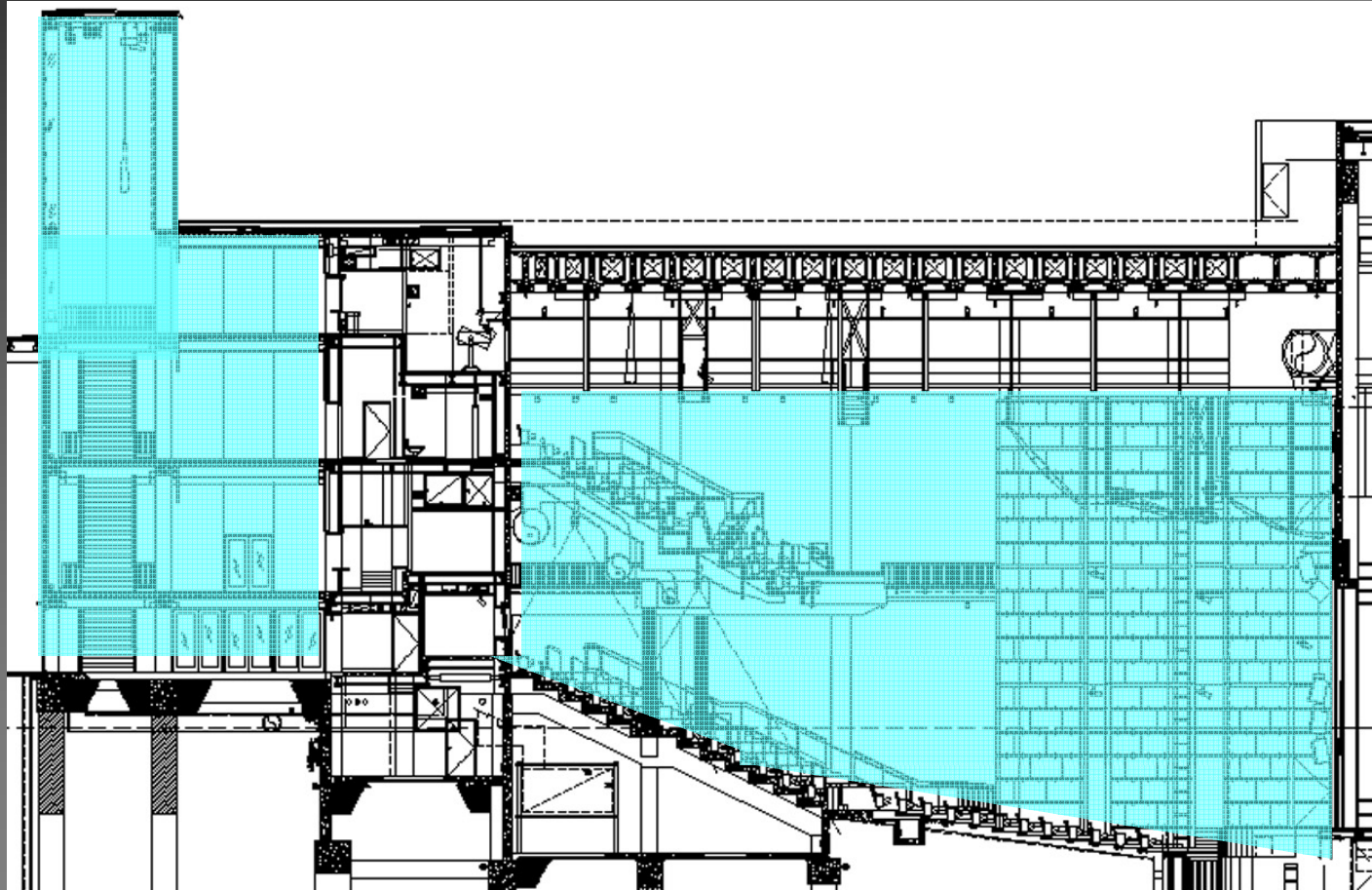
Office





# Building Overview

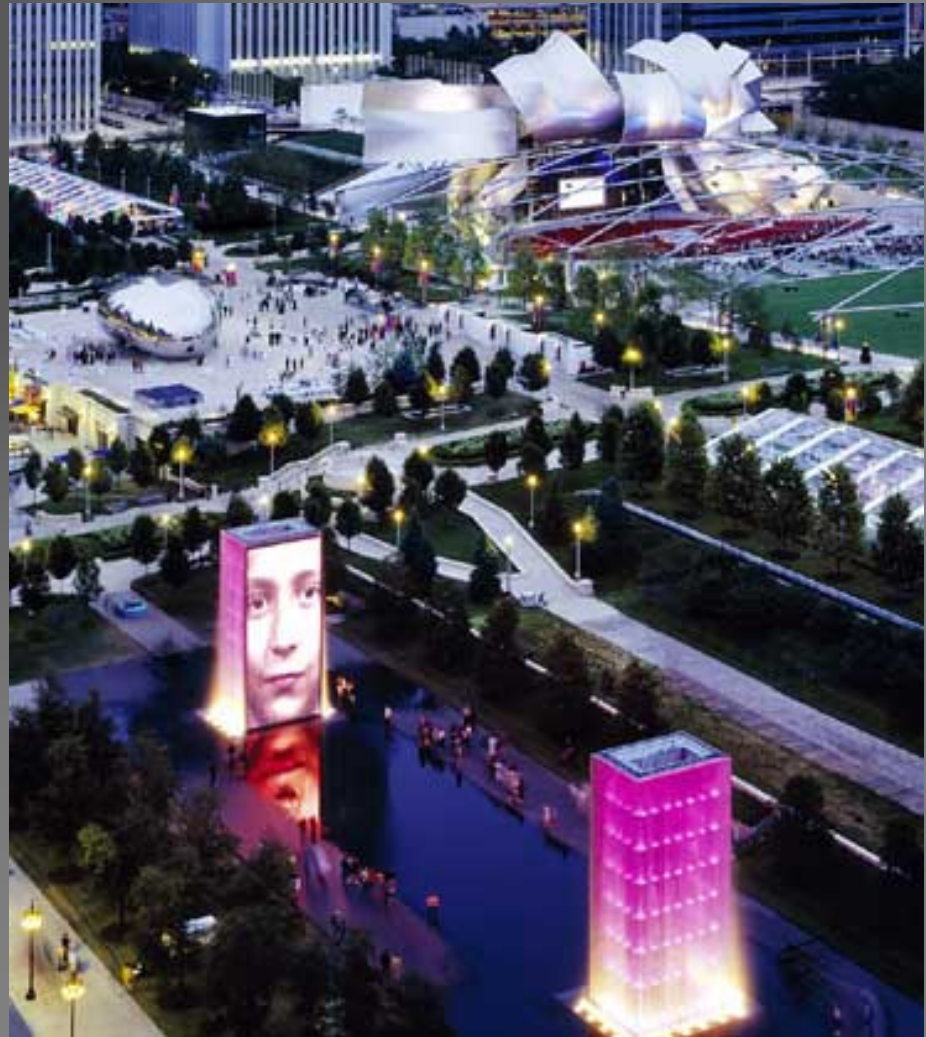
## Sections



# Building Overview

## Design Goals

- Changing lighting atmospheres
- Tie-in with Millennium Park



# Building Overview

## Design Goals

Entrance → Lobby → **Auditorium**

- Medium Contrast
- Inviting
- Elegant

- Low Contrast
- Guiding
- Visual Interest

- High Contrast
- Dynamic
- Exciting

# Building Entrance Space Features

- Identify the building
- Guide to the entrance
- Set the scene








# Building Entrance

## Design Goals

- Medium Contrast – 1:10
- Accent Art Piece
- Locate Entrance
- Operate efficiently
- High Luminance



-  White painted walls, ceiling
-  Sealed Concrete Floor
-  Black Theater Curtain

# Building Entrance

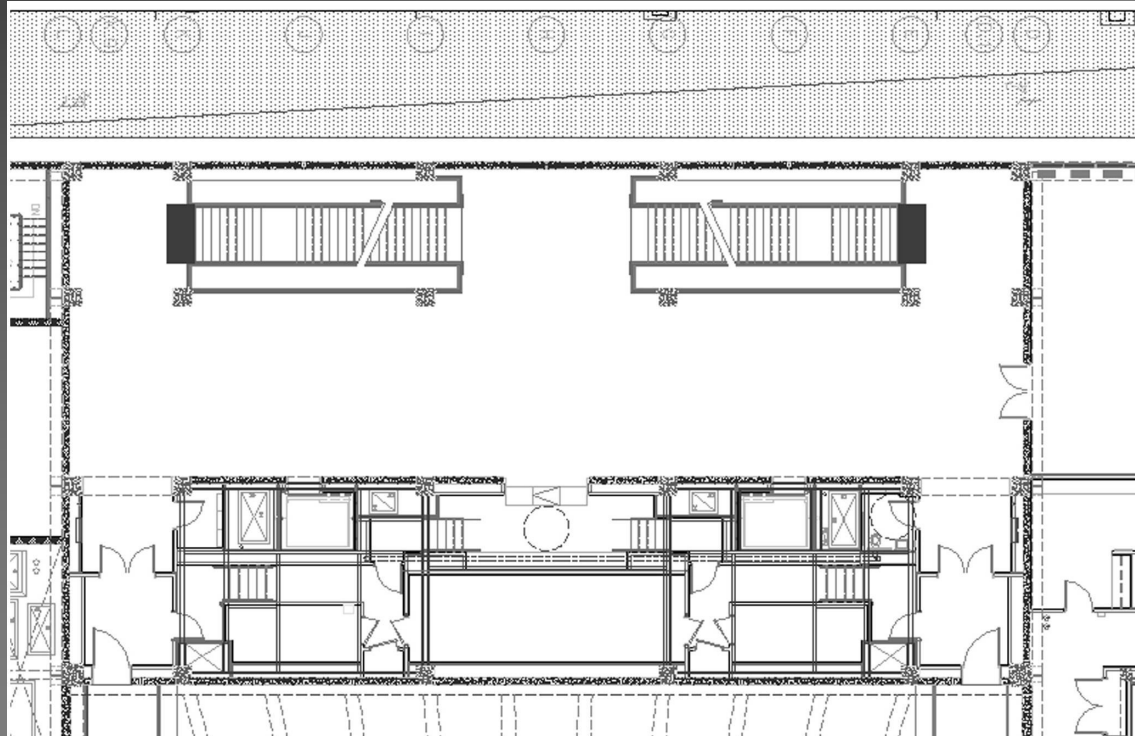
## Schematic Design

Identify Building  
Locate Entrance



# Typical Lobby Space Features

- Guide into the theater
- Exchange of tickets
- Wait or meet people
- Locate Elevators



 White painted walls, ceiling

 Sealed Concrete Floor



# Typical Lobby Design Goals

Cheerful  
Welcoming  
Festive

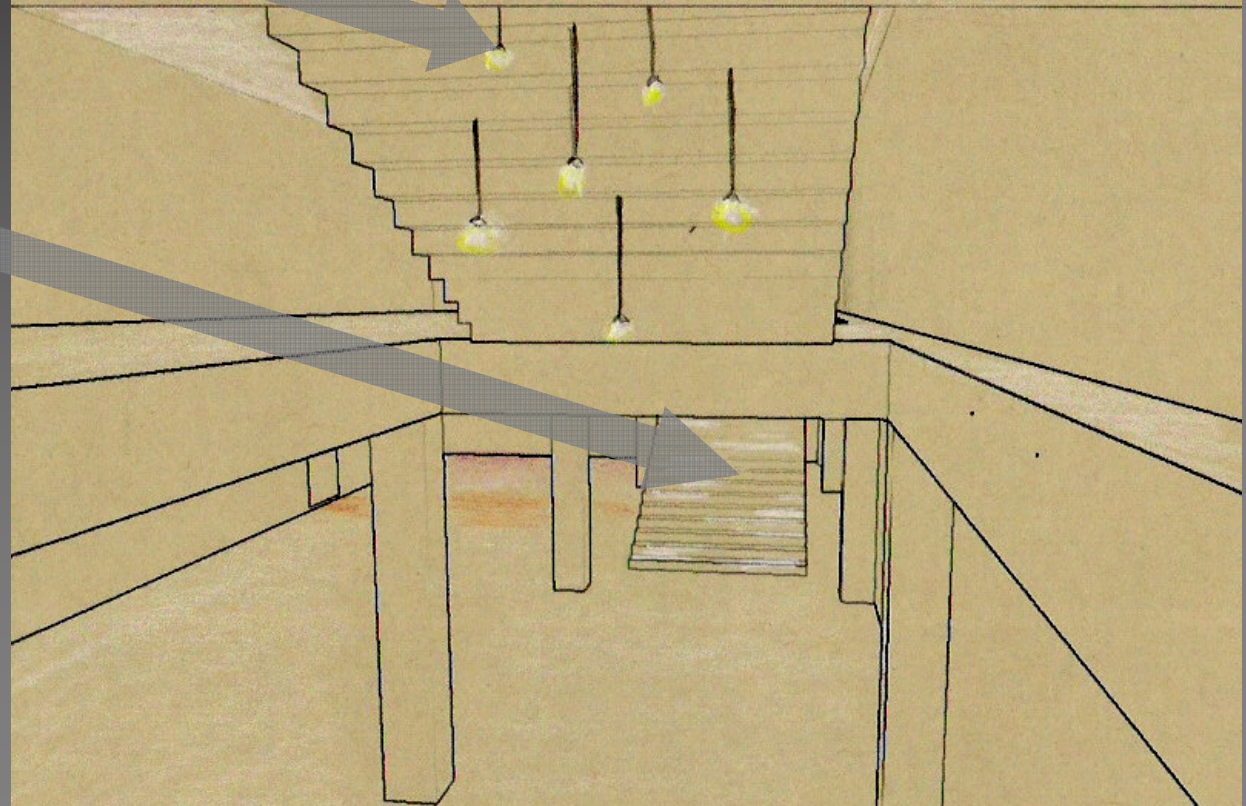


- Low Contrast – 1:3
- Add color to a dull space
- Uniformity for walking
- Contrast on stairs
- Minimum 20fc on floor

# Typical Lobby Schematic Design

Visual Interest

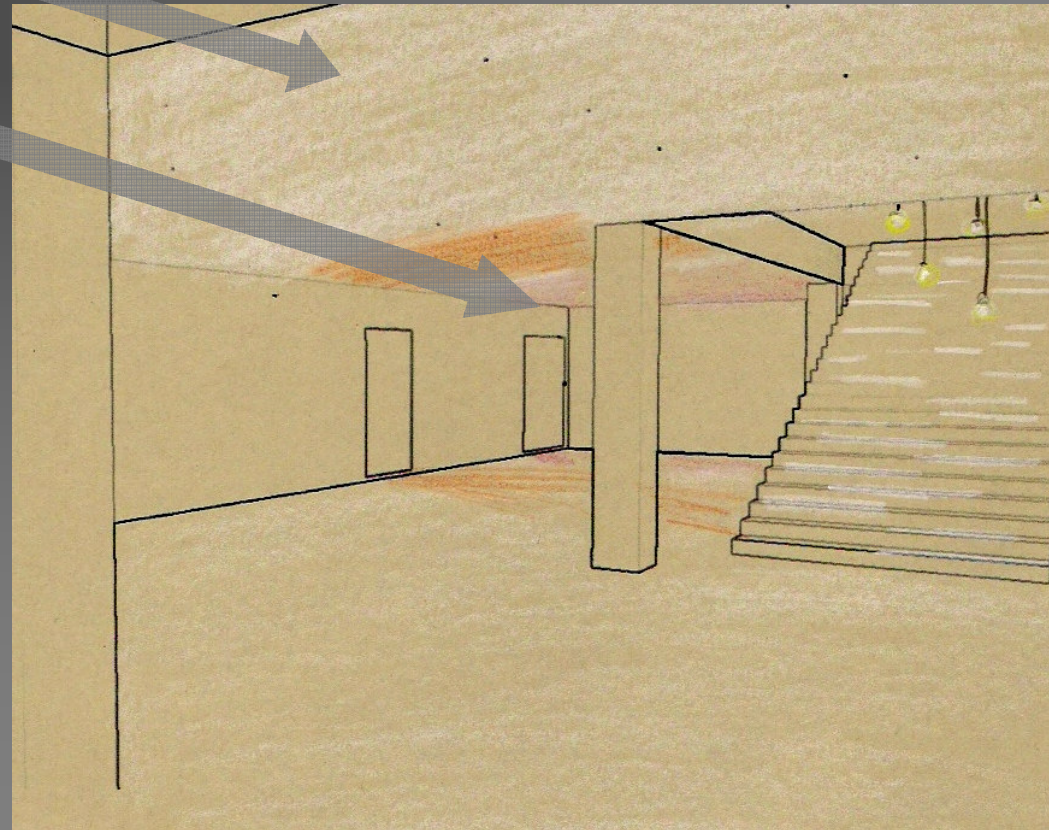
Contrast



# Typical Lobby Schematic Design

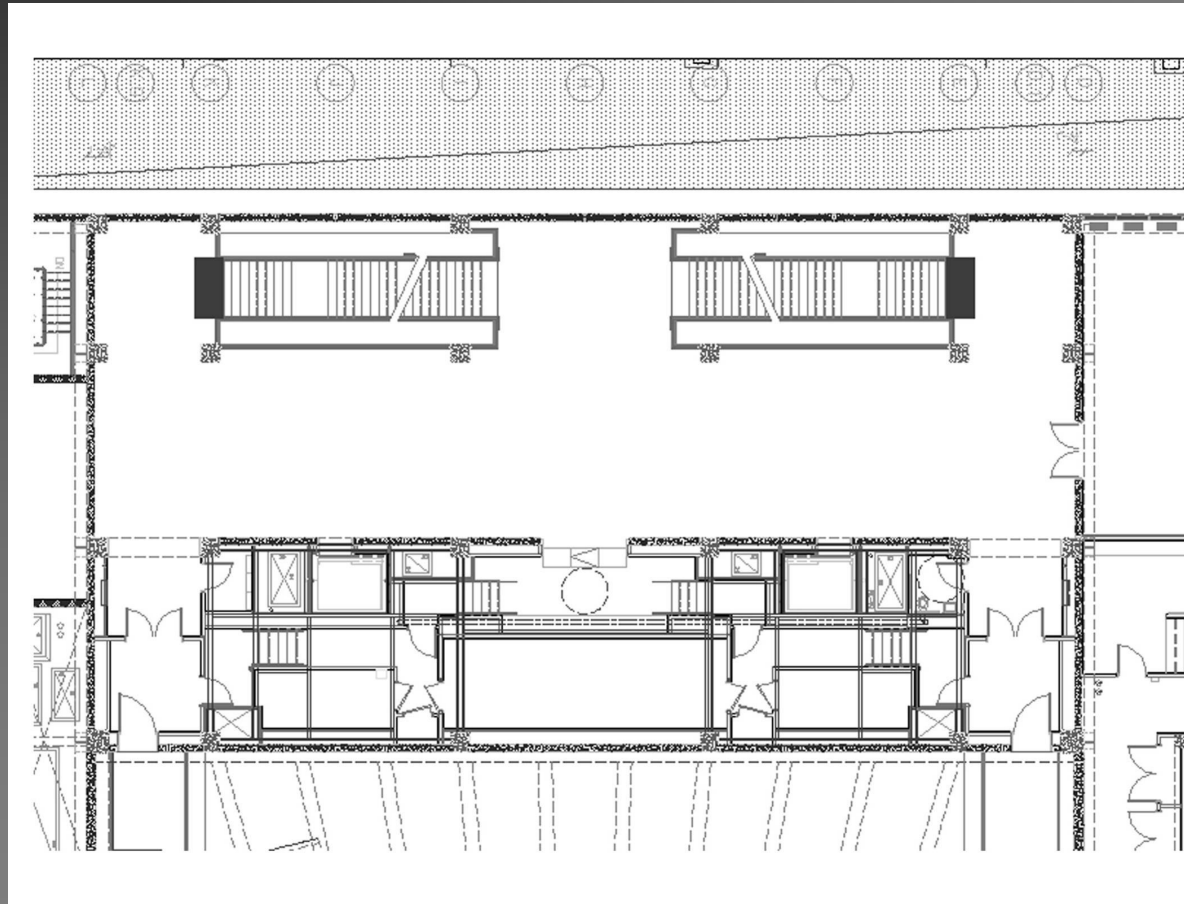
Wash the ceiling

Highlight Doors





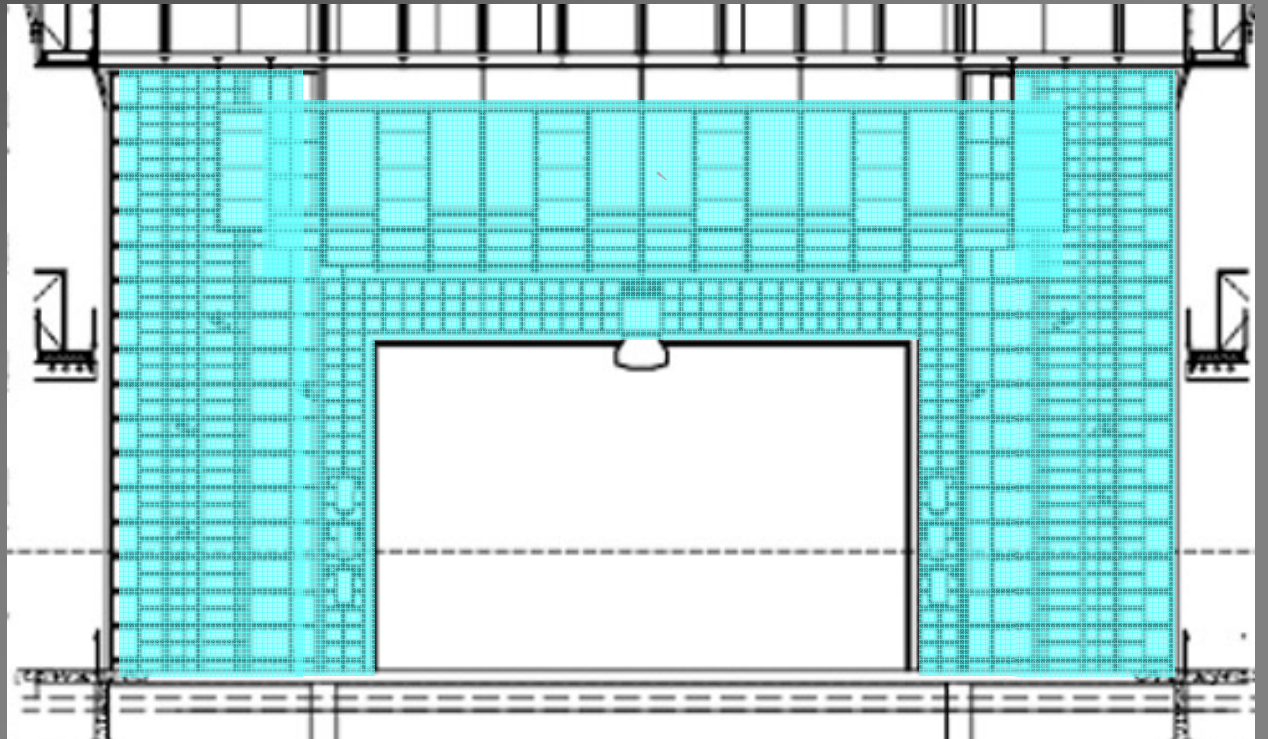
# Typical Lobby Schematic Design



# Auditorium Sections

- Acoustical side panels at sides of stage
- Acoustical curtains on side walls
- Acoustical ceiling panels above orchestra
- Iridescent Stage Curtain
- 1525 seats

- High Contrast –  
1:30
- Safety – stairs
- Reduce glare



# Auditorium Design Themes

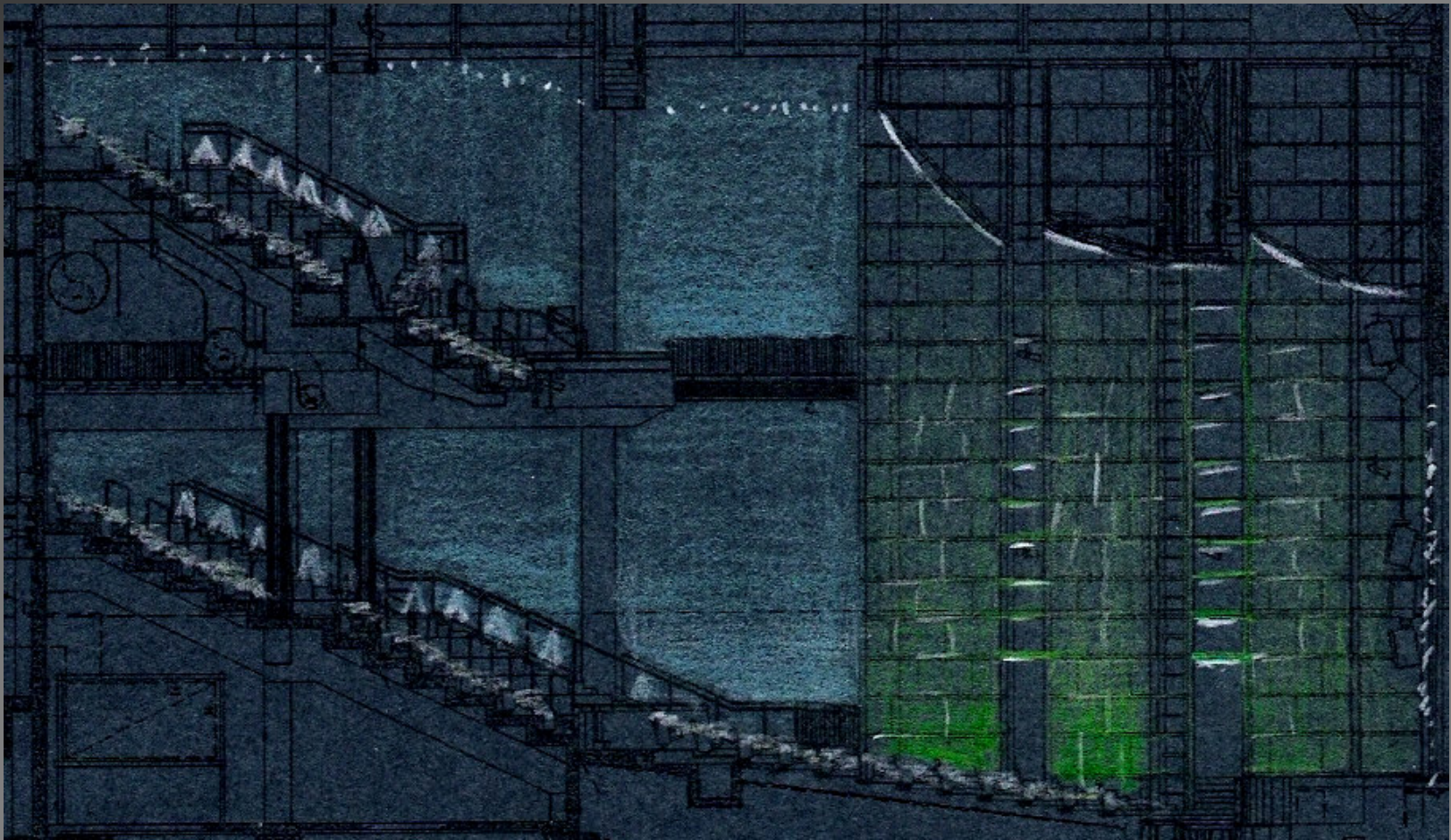
- Atmosphere:
  - Nighttime in the Park
  - Excitement
  - Crescendo – Finale
- Colors and Light Create Contrast



Photograph courtesy of Patrik Helin

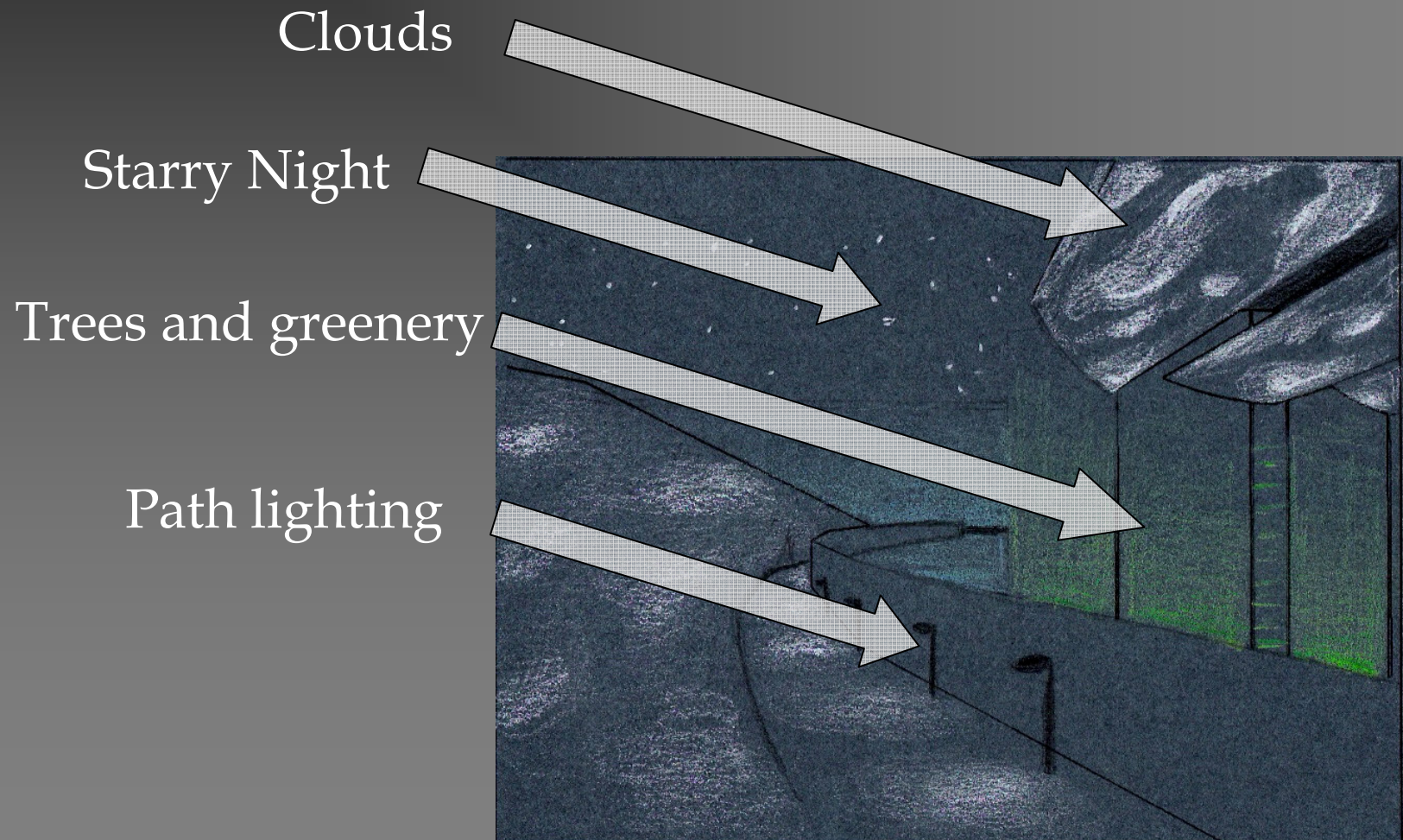


# Auditorium Schematic Design

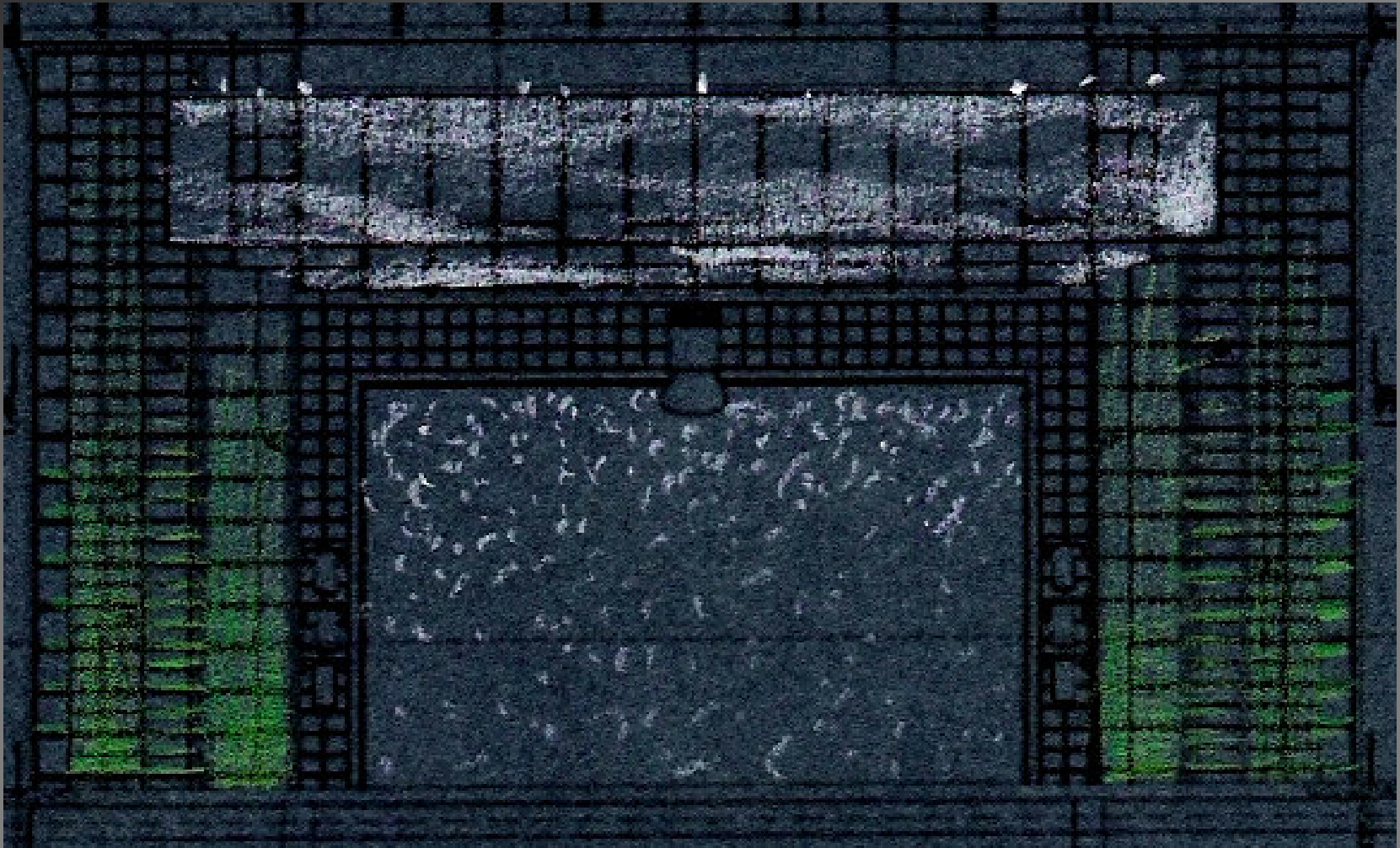




# Auditorium Schematic Design



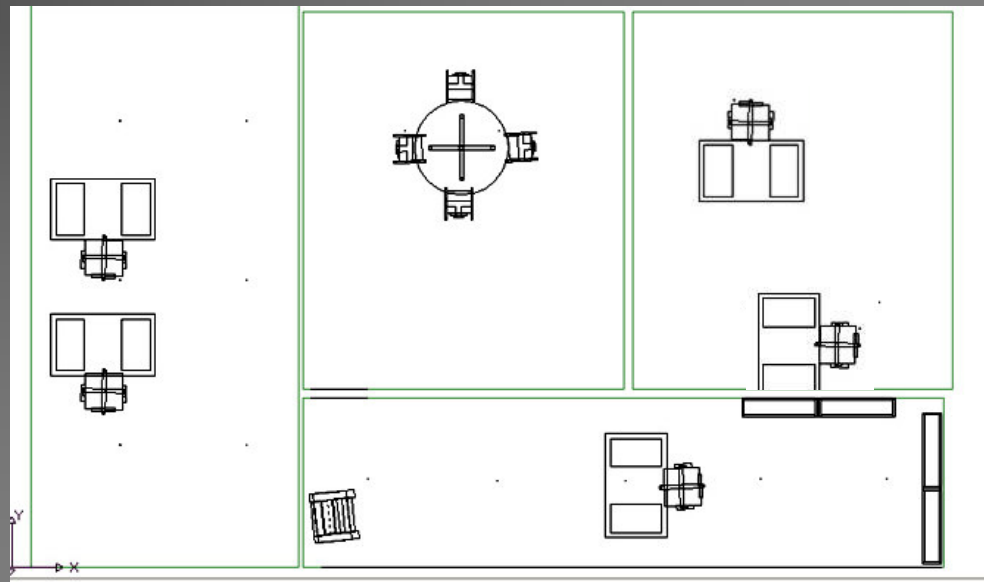
# Auditorium Schematic Design



# Private Office Area

## Space Features

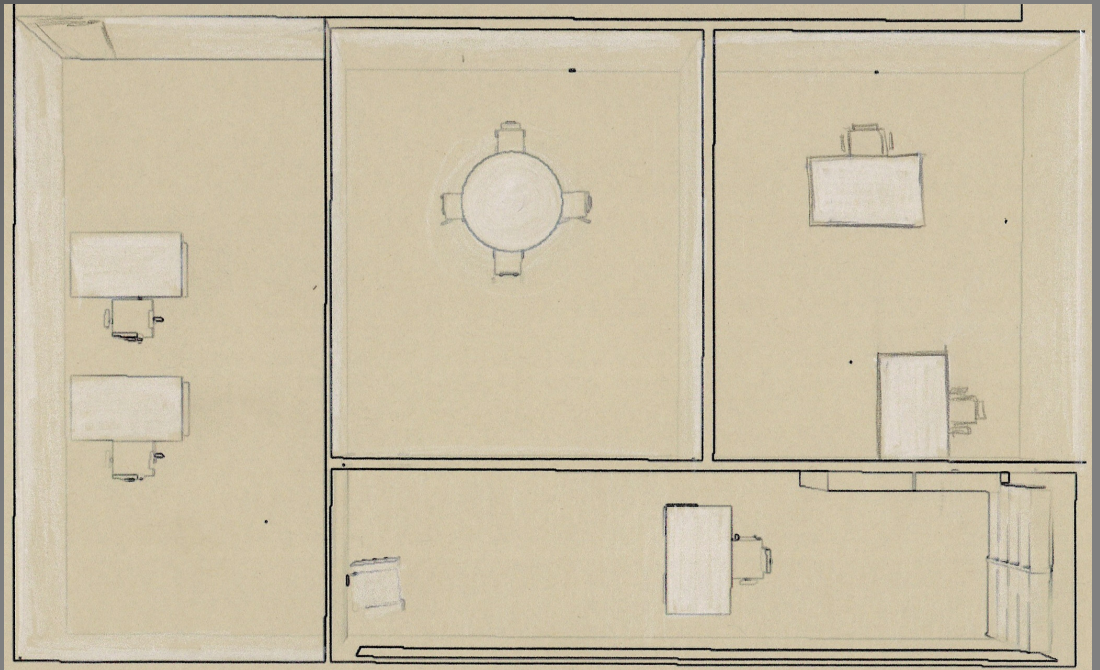
- Meeting with new Clients
- Working space for Administrative Staff
- Working space for Managerial Staff
- Working on computers



- White painted walls, ceiling
- Sealed Concrete Floor

# Private Office Area Design Goals

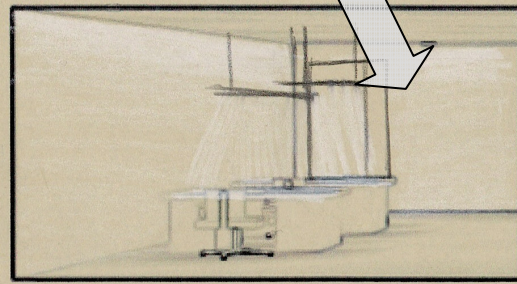
- Tie-in with the rest of the building
- Remove glare sources
- Provide uniformity on desks
- Increase the visual interest
- Highlight walls to open up the space



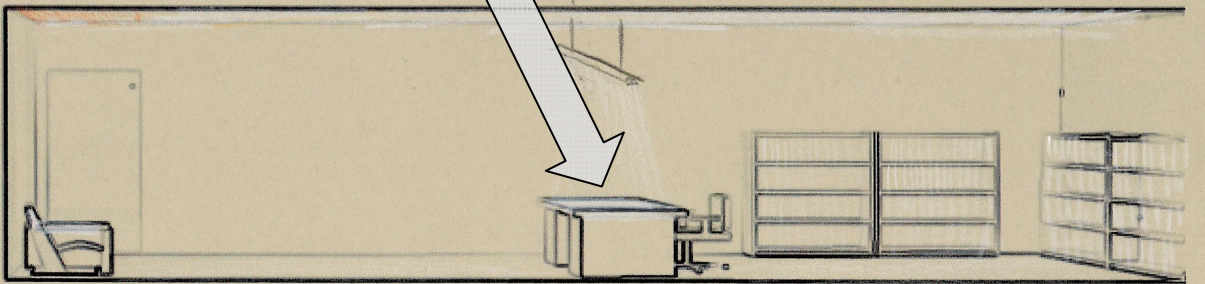


# Private Office Area Schematic Design

Lighting the Walls



Uniform Workplane



50fc on the work surfaces  
20fc on the walls

---

Questions & Comments...

*Thank you!*