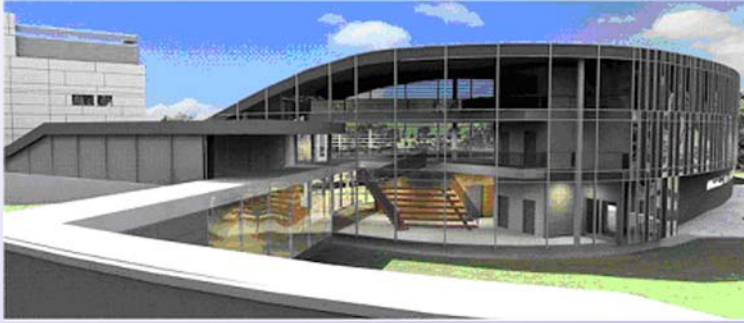


Center for Health Research and Rural Advocacy

Geisinger Medical Campus
Danville, Pennsylvania



EwingCole

Geisinger
Health System

Project Overview

Size: 67,000 Square Feet
Cost: \$18,400,000
Construction: July 2005 - February 2007
Delivery Method: General Contractor

Project Team

Owner: Geisinger Health System
Architect: Ewing Cole
GC: Geisinger Health System Facilities
Administration
Civil Engineers: Borton Lawson
MEP & Structural Engineers: Ewing Cole

Structural System

Four Story Structural Steel Frame
Basement 5" Slab on Grade
7' x 7' Concrete Spread Footings
6" Slab on 20 Gauge Metal Deck



Architectural

Basic LEED Certification
Aluminum Curtain Wall System
Precast Accent Panels
300 Seat Fully-Functional Auditorium



Electrical / Lighting System

Main Switchboard: 2500 Amps
Nine Distribution Panels: 480/277V
3 phase, 4 wire service
Four Dry 300 KVA Transformers
Fixtures: Compact and Tubular
Fluorescents with Dimming Ballasts

Mechanical System

Four Rooftop Air Handling Units:
Range 4,000 CFM - 27,000 CFM
Three 500 Ton Variable Frequency Chillers
Hydraulically Designed Sprinkler System
with Advanced Alert System

Construction Management - Michael W. Vergari

www.arche.psu.edu/thesis/eportfolio/current/portfolios/mwv107/