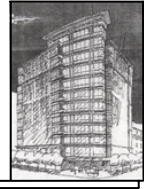


**EXECUTIVE TOWER**  
**NW WASHINGTON, DC**



SEAN HOWARD  
STRUCTURAL

---

# APPENDIX D

Laterals Load Distribution  
Building Drifts

# EXECUTIVE TOWER NW WASHINGTON, DC



SEAN HOWARD  
STRUCTURAL

Height (ft)	Seismic		Wind - Governing		Story Forces	
	E-W (pLf)	N-S (pLf)	E-W (pLf)	N-S (pLf)	E-W (kips)	N-S (kips)
roof	107.0	168.7	96.8	80.7	14.0	7.4
pent.	298.0	469.7	249.0	207.0	36.1	19.0
12	267.3	421.3	263.7	218.4	38.2	20.1
11	237.0	373.5	223.1	184.3	32.3	17.0
10	207.7	327.3	218.8	180.2	31.7	16.6
9	179.2	282.4	214.8	176.2	31.2	16.2
8	151.3	238.5	210.9	172.3	30.6	15.8
7	124.7	196.5	205.6	167.1	29.8	15.4
6	99.2	156.3	200.2	161.8	29.0	14.9
5	74.7	117.7	194.5	156.1	28.2	14.4
4	51.9	81.8	186.8	148.6	27.1	13.7
3	31.0	48.9	177.9	139.8	25.8	12.9
2	12.6	19.9	164.3	126.6	23.8	11.6

# EXECUTIVE TOWER NW WASHINGTON, DC



SEAN HOWARD  
STRUCTURAL

Lateral Rigidity	h (ft)	Wall 1	Wall 2	Wall 3	Wall 4	Wall 5	Wall 6	F1	F2	F2	F2	F3	F4	F4	F4	F5	F5	F5	ΣR	
		(E-W)	(E-W)	(E-W)	(E-W)	(N-S)	(N-S)	(E-W)	(E-W)	(N-S)	(N-S)	(E-W)	(N-S)	(E-W)	(N-S)	(E-W)	(N-S)	(E-W)	(N-S)	(E-W)
roof	147.5	4.1	4.1	3.4	3.4	33.2	43.5	8.9	9.2	8.4	3.7	5.9	3.3	1.3	3.0	9.8	2.0	9.6	35.5	98.9
pent.	129.5	6.0	6.0	4.9	4.9	48.8	64.0	8.9	9.2	8.4	3.7	5.9	3.3	1.3	3.0	10.8	2.2	10.6	42.8	136.0
12	118.7	7.8	7.8	6.4	6.4	63.3	82.8	10.0	10.2	9.3	4.2	6.6	3.7	1.5	3.4	11.1	2.3	10.9	51.6	171.1
11	107.8	10.4	10.4	8.6	8.6	84.0	109.9	11.1	11.5	10.5	4.7	7.4	4.2	1.7	3.8	12.7	2.6	12.4	63.8	222.2
10	97.0	14.3	14.3	11.7	11.7	114.7	150.0	12.6	13.0	11.8	5.3	8.4	4.8	2.0	4.4	14.6	3.0	14.3	81.5	297.1
9	86.2	20.3	20.3	16.7	16.7	162.4	212.0	14.5	14.9	13.6	6.1	9.7	5.6	2.3	5.1	17.1	3.6	16.7	108.0	412.1
8	75.3	30.3	30.3	25.0	25.0	240.4	313.2	17.1	17.5	15.9	7.1	11.4	6.6	2.7	6.0	20.4	4.2	20.0	150.5	598.1
7	64.5	48.1	48.1	39.6	39.6	376.7	489.2	20.7	21.0	19.2	8.6	13.8	8.1	3.3	7.4	25.3	5.3	24.7	223.9	920.4
6	53.7	82.9	82.9	68.4	68.4	636.5	822.3	26.2	26.4	24.1	10.7	17.4	10.5	4.3	9.6	32.8	6.8	32.1	364.0	1528.6
5	42.8	161.0	161.0	132.9	132.9	1192.4	1527.6	36.2	35.6	32.5	14.5	23.9	14.8	6.0	13.5	46.7	9.7	45.7	672.3	2817.6
4	32.0	375.5	375.5	311.1	311.1	2592.0	3268.7	56.8	53.7	49.0	21.9	37.0	24.0	9.8	21.9	73.2	15.2	71.6	1504.1	6013.0
3	21.2	1201.8	1201.8	1004.3	1004.3	7037.4	8596.3	113.6	101.2	92.4	41.2	73.5	50.5	20.5	46.1	146.0	30.3	142.8	4669.1	15937.4
2	10.3	7281.6	7281.6	6285.6	6285.6	27291.3	31355.4	450.5	367.7	335.8	149.7	291.5	217.9	88.6	199.1	574.0	119.3	561.5	28128.5	59848.4

E-W	story forces (kips)	story shear (kips)	Wall 1		Wall 2		Wall 3		Wall 4		F1		F2		F4		F5	
			prop. (%)	Shear (kips)	prop. (%)	Shear (kips)	prop. (%)	Shear (kips)	prop. (%)	Shear (kips)	prop. (%)	Force (kips)	prop. (%)	Force (kips)	prop. (%)	Force (kips)	prop. (%)	Force (kips)
roof	14.0	14.0	0.115	1.6	0.115	1.6	0.094	1.3	0.094	1.3	0.251	3.52	0.166	2.33	0.038	0.53	0.057	0.81
pent.	36.1	50.1	0.141	7.0	0.141	7.0	0.116	5.8	0.116	5.8	0.208	7.51	0.138	4.98	0.031	1.13	0.052	1.89
12	38.2	88.4	0.151	13.4	0.151	13.4	0.124	11.0	0.124	11.0	0.194	7.40	0.128	4.89	0.029	1.11	0.045	1.71
11	32.3	120.7	0.163	19.7	0.163	19.7	0.134	16.2	0.134	16.2	0.174	5.63	0.116	3.75	0.027	0.87	0.041	1.34
10	31.7	152.5	0.175	26.7	0.175	26.7	0.144	22.0	0.144	22.0	0.155	4.91	0.103	3.27	0.024	0.76	0.037	1.18
9	31.2	183.6	0.188	34.5	0.188	34.5	0.155	28.4	0.155	28.4	0.134	4.18	0.090	2.80	0.021	0.66	0.033	1.02
8	30.6	214.2	0.201	43.1	0.201	43.1	0.166	35.5	0.166	35.5	0.114	3.47	0.076	2.32	0.018	0.55	0.028	0.86
7	29.8	244.0	0.215	52.4	0.215	52.4	0.177	43.2	0.177	43.2	0.092	2.76	0.062	1.84	0.015	0.44	0.023	0.70
6	29.0	273.0	0.228	62.2	0.228	62.2	0.188	51.3	0.188	51.3	0.072	2.09	0.048	1.39	0.012	0.34	0.019	0.54
5	28.2	301.2	0.239	72.1	0.239	72.1	0.198	59.6	0.198	59.6	0.054	1.52	0.036	1.00	0.009	0.25	0.014	0.41
4	27.1	328.3	0.250	82.0	0.250	82.0	0.207	67.9	0.207	67.9	0.038	1.02	0.025	0.67	0.006	0.18	0.010	0.27
3	25.8	354.1	0.257	91.2	0.257	91.2	0.215	76.2	0.215	76.2	0.024	0.63	0.016	0.41	0.004	0.11	0.006	0.17
2	23.8	378.0	0.259	97.8	0.259	97.8	0.223	84.5	0.223	84.5	0.016	0.38	0.010	0.25	0.003	0.08	0.004	0.10
base	378.0			97.8		97.8		84.5		84.5		45.02		29.88		7.00		11.00

N-S	story forces (kips)	story shear (kips)	Wall 5		Wall 6		F1		F2		F3		F4		F5	
			prop. (%)	Shear (kips)	prop. (%)	Shear (kips)	prop. (%)	Force (kips)	prop. (%)	Force (kips)	prop. (%)	Force (kips)	prop. (%)	Force (kips)	prop. (%)	Force (kips)
roof	7.4	7.4	0.335	2.5	0.440	3.3	0.090	0.67	0.038	0.28	0.060	0.44	0.030	0.23	0.097	0.72
pent.	19.0	26.5	0.359	9.5	0.470	12.4	0.065	1.25	0.027	0.52	0.043	0.83	0.022	0.42	0.078	1.48
12	20.1	46.6	0.370	17.2	0.484	22.5	0.058	1.17	0.024	0.49	0.039	0.78	0.020	0.40	0.063	1.28
11	17.0	63.5	0.378	24.0	0.495	31.4	0.050	0.85	0.021	0.36	0.033	0.56	0.017	0.29	0.056	0.95
10	16.6	80.1	0.386	30.9	0.505	40.4	0.042	0.70	0.018	0.29	0.028	0.47	0.015	0.24	0.048	0.80
9	16.2	96.3	0.394	38.0	0.515	49.5	0.035	0.57	0.015	0.24	0.024	0.38	0.012	0.20	0.041	0.66
8	15.8	112.1	0.402	45.1	0.524	58.7	0.029	0.45	0.012	0.19	0.019	0.30	0.010	0.16	0.033	0.53
7	15.4	127.5	0.409	52.2	0.531	67.8	0.022	0.35	0.009	0.14	0.015	0.23	0.008	0.12	0.027	0.41
6	14.9	142.4	0.416	59.3	0.538	76.6	0.017	0.26	0.007	0.10	0.011	0.17	0.006	0.09	0.021	0.31
5	14.4	156.8	0.423	66.3	0.542	85.0	0.013	0.18	0.005	0.07	0.008	0.12	0.005	0.07	0.016	0.23
4	13.7	170.4	0.431	73.5	0.544	92.6	0.009	0.13	0.004	0.05	0.006	0.08	0.004	0.05	0.012	0.16
3	12.9	183.3	0.442	80.9	0.539	98.9	0.007	0.09	0.003	0.03	0.005	0.06	0.003	0.04	0.009	0.12
2	11.6	194.9	0.456	88.9	0.524	102.1	0.008	0.09	0.003	0.03	0.005	0.06	0.003	0.04	0.009	0.11
base	194.9			88.9		102.1		6.76		2.80		4.48		2.36		7.75

# EXECUTIVE TOWER NW WASHINGTON, DC

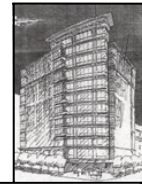


SEAN HOWARD  
STRUCTURAL

Torsion		Wall 1	Wall 2	Wall 3	Wall 4	Wall 5	Wall 6	F1 (E-W)	F1 (N-S)	F2	F3	F4	F5	$\Sigma R_x^2$
Dist. from CR		10.5	9.5	8.5	9.5	14.5	13.0	63.5	50.1	60.3	40.0	35.5	49.0	
roof	Rx	43	43	32	28	315	628	565	446	554	236	117	480	142888
pent.		63	57	42	47	706	832	565	446	554	236	117	529	154188
12		82	74	55	61	914	1077	635	513	564	148	131	544	167062
11		109	99	73	81	1213	1428	705	574	631	168	149	622	193620
10		150	136	100	112	1658	1950	800	650	715	192	170	715	229335
9		213	193	142	159	2347	2756	921	746	821	224	199	838	279016
8		318	288	212	237	3474	4071	1086	875	962	264	234	1000	351943
7		505	457	337	376	5444	6359	1314	1054	1159	324	288	1240	467545
6		871	788	581	650	9197	10690	1664	1322	1454	420	373	1607	667997
5		1690	1529	1130	1283	17231	19859	2299	1781	1959	592	525	2288	1068865
4		3943	3588	2645	2956	37454	42493	3607	2688	2956	960	852	3587	2005907
3		12619	11417	8537	9541	101690	111752	7214	5071	5577	2020	1793	7154	4869893
2	76456	69175	53428	59713	394359	407620	28607	18419	20257	8716	7735	28126	19441801	

Rx/Rx <sup>2</sup>	Wall 1	Wall 2	Wall 3	Wall 4	Wall 5	Wall 6	F1 (E-W)	F1 (N-S)	F2	F3	F4	F5
roof	0.000	0.000	0.000	0.000	0.002	0.004	0.004	0.003	0.004	0.002	0.001	0.003
pent.	0.000	0.000	0.000	0.000	0.005	0.005	0.004	0.003	0.004	0.002	0.001	0.003
12	0.000	0.000	0.000	0.000	0.005	0.006	0.004	0.003	0.003	0.001	0.001	0.003
11	0.001	0.001	0.000	0.000	0.006	0.007	0.004	0.003	0.003	0.001	0.001	0.003
10	0.001	0.001	0.000	0.000	0.007	0.009	0.003	0.003	0.003	0.001	0.001	0.003
9	0.001	0.001	0.001	0.001	0.008	0.010	0.003	0.003	0.003	0.001	0.001	0.003
8	0.001	0.001	0.001	0.001	0.010	0.012	0.003	0.002	0.003	0.001	0.001	0.003
7	0.001	0.001	0.001	0.001	0.012	0.014	0.003	0.002	0.002	0.001	0.001	0.003
6	0.001	0.001	0.001	0.001	0.014	0.016	0.002	0.002	0.002	0.001	0.001	0.002
5	0.002	0.001	0.001	0.001	0.016	0.019	0.002	0.002	0.002	0.001	0.000	0.002
4	0.002	0.002	0.001	0.001	0.019	0.021	0.002	0.001	0.001	0.000	0.000	0.002
3	0.003	0.002	0.002	0.002	0.021	0.023	0.001	0.001	0.001	0.000	0.000	0.001
2	0.004	0.004	0.003	0.003	0.020	0.021	0.001	0.001	0.001	0.000	0.000	0.001

# EXECUTIVE TOWER NW WASHINGTON, DC



**SEAN HOWARD  
STRUCTURAL**

Torsional Perportions			Wall 1	Wall 2	Wall 3	Wall 4	Wall 5	Wall 6	F1 (E-W)	F1 (N-S)	F2	F3	F4	F5
E-W	Torsional Moment (kip-ft)	Story Moment (kip-ft)	Resultant Forces from Torsion (kips)											
roof	99	99	0.030	0.030	0.022	0.020	0.219	0.436	0.392	0.309	0.384	0.164	0.081	0.333
pent.	354	255	0.145	0.131	0.097	0.108	1.620	1.910	0.934	0.737	0.916	0.390	0.194	0.875
12	624	270	0.306	0.277	0.204	0.228	3.414	4.022	1.026	0.828	0.911	0.239	0.212	0.879
11	852	228	0.481	0.435	0.320	0.358	5.341	6.288	0.831	0.677	0.744	0.198	0.176	0.733
10	1076	224	0.703	0.636	0.469	0.524	7.782	9.151	0.782	0.635	0.698	0.188	0.166	0.699
9	1296	220	0.991	0.897	0.660	0.738	10.906	12.806	0.726	0.588	0.647	0.177	0.157	0.660
8	1512	216	1.368	1.238	0.912	1.019	14.928	17.493	0.666	0.537	0.590	0.162	0.144	0.613
7	1723	210	1.861	1.684	1.241	1.387	20.057	23.430	0.592	0.475	0.522	0.146	0.129	0.558
6	1928	205	2.513	2.273	1.677	1.874	26.540	30.849	0.511	0.406	0.446	0.129	0.114	0.493
5	2127	199	3.363	3.043	2.249	2.513	34.285	39.516	0.428	0.332	0.365	0.110	0.098	0.426
4	2318	191	4.557	4.123	3.056	3.416	43.283	49.106	0.344	0.256	0.282	0.092	0.081	0.342
3	2500	182	6.479	5.862	4.383	4.898	52.208	57.374	0.270	0.190	0.209	0.076	0.067	0.268
2	2668	168	10.494	9.494	7.333	8.196	54.126	55.946	0.247	0.159	0.175	0.075	0.067	0.243
base	3771	2668	10.5	9.5	7.3	8.2	54.1	55.9	8	6	7	2	2	7

N-S	Torsional Moment (kip-ft)	Story Moment (kip-ft)	Resultant Forces from Torsion (kips)											
roof	40	40	0.012	0.012	0.009	0.008	0.088	0.176	0.158	0.125	0.155	0.066	0.033	0.135
pent.	143	103	0.059	0.053	0.039	0.044	0.654	0.771	0.377	0.297	0.369	0.157	0.078	0.353
12	251	109	0.123	0.112	0.082	0.092	1.376	1.621	0.412	0.333	0.366	0.096	0.085	0.353
11	343	92	0.193	0.175	0.129	0.144	2.149	2.530	0.333	0.271	0.298	0.079	0.070	0.294
10	432	90	0.283	0.256	0.188	0.210	3.127	3.677	0.312	0.254	0.279	0.075	0.067	0.279
9	520	88	0.398	0.360	0.265	0.296	4.375	5.137	0.289	0.234	0.258	0.070	0.062	0.263
8	606	86	0.548	0.496	0.365	0.408	5.978	7.006	0.264	0.213	0.234	0.064	0.057	0.243
7	689	83	0.744	0.673	0.496	0.554	8.017	9.366	0.233	0.187	0.206	0.058	0.051	0.220
6	769	80	1.002	0.907	0.669	0.748	10.587	12.306	0.200	0.159	0.175	0.051	0.045	0.193
5	847	78	1.339	1.211	0.895	1.000	13.646	15.728	0.167	0.129	0.142	0.043	0.038	0.166
4	920	74	1.809	1.637	1.213	1.356	17.184	19.496	0.133	0.099	0.109	0.035	0.031	0.132
3	990	69	2.565	2.320	1.735	1.939	20.667	22.712	0.103	0.072	0.080	0.029	0.026	0.102
2	1053	63	4.140	3.745	2.893	3.233	21.352	22.070	0.093	0.060	0.066	0.028	0.025	0.091
base	2615	1053	4	4	3	3	21	22	3	2	3	1	1	3

story forces (kips)	E-W	N-S
roof	14.0	7.4
pent.	36.1	19.0
12	38.2	20.1
11	32.3	17.0
10	31.7	16.6
9	31.2	16.2
8	30.6	15.8
7	29.8	15.4
6	29.0	14.9
5	28.2	14.4
4	27.1	13.7
3	25.8	12.9
2	23.8	11.6
base	378.0	194.9

story shear (kips)	E-W	N-S
roof	14.0	7.4
pent.	50.1	26.5
12	88.4	46.6
11	120.7	63.5
10	152.5	80.1
9	183.6	96.3
8	214.2	112.1
7	244.0	127.5
6	273.0	142.4
5	301.2	156.8
4	328.3	170.4
3	354.1	183.3
2	378.0	194.9
base	389.1	295.4

# EXECUTIVE TOWER NW WASHINGTON, DC



SEAN HOWARD  
STRUCTURAL

Total Forces (E-W)	Wall 1 Story Shear (kips)	Wall 2 Story Shear (kips)	Wall 3 Story Shear (kips)	Wall 4 Story Shear (kips)	Wall 5 Story Shear (kips)	Wall 6 Story Shear (kips)	F1 (E-W) Story Forces (kips)
roof	1.61	-0.03	1.61	1.33	-0.02	1.33	0.22
pent.	7.05	-0.15	7.05	5.80	-0.10	5.80	1.62
12	13.37	-0.31	13.37	11.00	-0.20	11.00	3.41
11	19.68	-0.48	19.68	16.19	-0.32	16.19	5.34
10	26.71	-0.70	26.71	21.98	-0.47	21.98	7.78
9	34.54	-0.99	34.54	28.43	-0.66	28.43	10.91
8	43.14	-1.37	43.14	35.52	-0.91	35.52	14.93
7	52.42	-1.86	52.42	43.18	-1.24	43.18	20.06
6	62.20	-2.51	62.20	51.29	-1.68	51.29	26.54
5	72.14	-3.36	72.14	59.58	-2.25	59.58	34.29
4	81.98	-4.56	81.98	67.92	-3.06	67.92	43.28
3	91.15	-6.48	91.15	76.17	-4.38	76.17	52.21
2	97.84	-10.49	97.84	84.46	-7.33	84.46	54.13
base	97.84	-10.49	97.84	84.46	-7.33	84.46	54.13

Total Forces (E-W)	F1 (N-S) Story Force (kips)	F2 Story Forces (kips)	F3 Story Forces (kips)	F4 Story Forces (kips)	F5 Story Forces (kips)
roof	0.00	0.31	0.31	0.16	0.16
pent.	0.00	0.74	0.74	0.39	0.39
12	0.00	0.83	0.83	0.24	0.24
11	0.00	0.68	0.68	0.20	0.20
10	0.00	0.63	0.63	0.19	0.19
9	0.00	0.59	0.59	0.18	0.18
8	0.00	0.54	0.54	0.16	0.16
7	0.00	0.47	0.47	0.15	0.15
6	0.00	0.41	0.41	0.13	0.13
5	0.00	0.33	0.33	0.11	0.11
4	0.00	0.26	0.26	0.09	0.09
3	0.00	0.19	0.19	0.08	0.08
2	0.00	0.16	0.16	0.08	0.08
base	0.00	6.13	29.88	6.89	36.77

# EXECUTIVE TOWER NW WASHINGTON, DC



SEAN HOWARD  
STRUCTURAL

Total Forces (N-S)	Wall 1 Story Shear (kips)	Wall 2 Story Shear (kips)	Wall 3 Story Shear (kips)	Wall 4 Story Shear (kips)	Wall 5 Story Shear (kips)	Wall 6 Story Shear (kips)	F1 (E-W) Story Forces (kips)
roof	0.00	0.01	0.01	0.00	0.01	0.01	0.00
pent.	0.00	0.06	0.00	0.04	0.04	0.04	0.00
12	0.00	0.12	0.00	0.08	0.08	0.09	0.00
11	0.00	0.19	0.00	0.13	0.13	0.14	0.00
10	0.00	0.28	0.00	0.19	0.19	0.21	0.00
9	0.00	0.40	0.00	0.26	0.26	0.30	0.00
8	0.00	0.55	0.00	0.37	0.37	0.41	0.00
7	0.00	0.74	0.00	0.50	0.50	0.55	0.00
6	0.00	1.00	0.00	0.67	0.67	0.75	0.00
5	0.00	1.34	0.00	0.89	0.89	1.00	0.00
4	0.00	1.81	0.00	1.21	1.21	1.36	0.00
3	0.00	2.56	0.00	1.73	1.73	1.94	0.00
2	0.00	4.14	0.00	2.89	2.89	3.23	0.00
base	0.00	4.14	0.00	2.89	2.89	3.23	0.00

Total Forces (N-S)	Wall 1 Story Shear (kips)	Wall 2 Story Shear (kips)	Wall 3 Story Shear (kips)	Wall 4 Story Shear (kips)	Wall 5 Story Shear (kips)	Wall 6 Story Shear (kips)	F1 (E-W) Story Forces (kips)
roof	0.00	0.01	0.01	0.00	0.01	0.01	0.00
pent.	0.00	0.06	0.00	0.04	0.04	0.04	0.00
12	0.00	0.12	0.00	0.08	0.08	0.09	0.00
11	0.00	0.19	0.00	0.13	0.13	0.14	0.00
10	0.00	0.28	0.00	0.19	0.19	0.21	0.00
9	0.00	0.40	0.00	0.26	0.26	0.30	0.00
8	0.00	0.55	0.00	0.37	0.37	0.41	0.00
7	0.00	0.74	0.00	0.50	0.50	0.55	0.00
6	0.00	1.00	0.00	0.67	0.67	0.75	0.00
5	0.00	1.34	0.00	0.89	0.89	1.00	0.00
4	0.00	1.81	0.00	1.21	1.21	1.36	0.00
3	0.00	2.56	0.00	1.73	1.73	1.94	0.00
2	0.00	4.14	0.00	2.89	2.89	3.23	0.00
base	0.00	4.14	0.00	2.89	2.89	3.23	0.00

Total Forces (N-S)	F1 (N-S) Story Force (kips)	F2 Story Forces (kips)	F3 Story Forces (kips)	F4 Story Forces (kips)	F5 Story Forces (kips)										
roof	0.67	0.13	0.79	0.28	-0.16	0.28	0.44	-0.07	0.44	0.23	-0.03	0.23	0.72	0.13	0.85
pent.	1.25	0.30	1.54	0.52	-0.37	0.52	0.83	-0.16	0.83	0.42	-0.08	0.42	1.48	0.35	1.83
12	1.17	0.33	1.51	0.49	-0.37	0.49	0.78	-0.10	0.78	0.40	-0.09	0.40	1.28	0.35	1.63
11	0.85	0.27	1.12	0.36	-0.30	0.36	0.56	-0.08	0.56	0.29	-0.07	0.29	0.95	0.29	1.24
10	0.70	0.25	0.96	0.29	-0.28	0.29	0.47	-0.07	0.47	0.24	-0.07	0.24	0.80	0.28	1.08
9	0.57	0.23	0.80	0.24	-0.26	0.24	0.38	-0.07	0.38	0.20	-0.06	0.20	0.66	0.26	0.92
8	0.45	0.21	0.67	0.19	-0.23	0.19	0.30	-0.06	0.30	0.16	-0.06	0.16	0.53	0.24	0.77
7	0.35	0.19	0.53	0.14	-0.21	0.14	0.23	-0.06	0.23	0.12	-0.05	0.12	0.41	0.22	0.63
6	0.28	0.16	0.41	0.10	-0.17	0.10	0.17	-0.05	0.17	0.09	-0.04	0.09	0.31	0.19	0.51
5	0.18	0.13	0.31	0.07	-0.14	0.07	0.12	-0.04	0.12	0.07	-0.04	0.07	0.23	0.17	0.40
4	0.13	0.10	0.23	0.05	-0.11	0.05	0.08	-0.04	0.08	0.05	-0.03	0.05	0.16	0.13	0.28
3	0.09	0.07	0.16	0.03	-0.08	0.03	0.06	-0.03	0.06	0.04	-0.03	0.04	0.12	0.10	0.22
2	0.09	0.06	0.15	0.03	-0.07	0.03	0.06	-0.03	0.06	0.04	-0.03	0.04	0.11	0.09	0.20
base	6.76	2.43	9.19	2.80	-2.74	2.80	4.48	-0.85	4.48	2.36	-0.67	2.36	7.75	2.82	10.57

# EXECUTIVE TOWER NW WASHINGTON, DC



SEAN HOWARD  
STRUCTURAL

	wall 1				wall 2				wall 3			
	Shear	R	$\Delta_{story}$	$\Delta_{Total}$	Shear	R	$\Delta_{story}$	$\Delta_{Total}$	Shear	R	$\Delta_{story}$	$\Delta_{Total}$
roof	1.6	4.1	0.128	4.284	1.6	4.1	0.130	4.406	1.3	3.4	0.128	4.288
pent.	7.0	6.0	0.269	4.156	7.2	6.0	0.274	4.276	5.8	4.9	0.269	4.161
12	13.4	7.8	0.426	3.887	13.6	7.8	0.435	4.002	11.0	6.4	0.426	3.891
11	19.7	10.4	0.513	3.461	20.1	10.4	0.524	3.567	16.2	8.6	0.513	3.465
10	26.7	14.3	0.557	2.948	27.3	14.3	0.570	3.043	22.0	11.7	0.557	2.952
9	34.5	20.3	0.561	2.391	35.4	20.3	0.575	2.472	28.4	16.7	0.561	2.394
8	43.1	30.3	0.526	1.830	44.4	30.3	0.541	1.897	35.5	25.0	0.526	1.833
7	52.4	48.1	0.458	1.304	54.1	48.1	0.472	1.356	43.2	39.6	0.458	1.307
6	62.2	82.9	0.364	0.847	64.5	82.9	0.377	0.884	51.3	68.4	0.364	0.849
5	72.1	161.0	0.256	0.483	75.2	161.0	0.267	0.507	59.6	132.9	0.257	0.484
4	82.0	375.5	0.150	0.227	86.1	375.5	0.158	0.240	67.9	311.1	0.151	0.228
3	91.2	1201.8	0.063	0.077	97.0	1201.8	0.067	0.082	76.2	1004.3	0.064	0.077
2	97.8	7281.6	0.013	0.013	107.3	7281.6	0.015	0.015	84.5	6285.6	0.013	0.013

	wall 4				wall 5				wall 6			
	Shear	R	$\Delta_{story}$	$\Delta_{Total}$	Shear	R	$\Delta_{story}$	$\Delta_{Total}$	Shear	R	$\Delta_{story}$	$\Delta_{Total}$
roof	1.3	3.4	0.129	4.410	2.6	33.2	0.025	0.666	3.3	43.5	0.024	0.591
pent.	5.9	4.9	0.275	4.281	10.2	48.8	0.047	0.641	12.4	64.0	0.044	0.567
12	11.2	6.4	0.435	4.006	18.6	63.3	0.072	0.594	22.5	82.8	0.067	0.523
11	16.5	8.6	0.524	3.571	26.2	84.0	0.084	0.522	31.4	109.9	0.076	0.456
10	22.5	11.7	0.571	3.047	34.1	114.7	0.087	0.438	40.4	150.0	0.079	0.380
9	29.2	16.7	0.576	2.476	42.3	162.4	0.085	0.351	49.5	212.0	0.075	0.301
8	36.5	25.0	0.541	1.900	51.1	240.4	0.077	0.266	58.7	313.2	0.067	0.225
7	44.6	39.6	0.473	1.359	60.2	376.7	0.065	0.189	67.8	489.2	0.056	0.158
6	53.2	68.4	0.378	0.886	69.9	636.5	0.051	0.124	76.6	822.3	0.043	0.102
5	62.1	132.9	0.267	0.508	80.0	1192.4	0.036	0.073	85.0	1527.6	0.030	0.059
4	71.3	311.1	0.158	0.241	90.6	2592.0	0.022	0.037	92.6	3268.7	0.018	0.029
3	81.1	1004.3	0.068	0.083	101.6	7037.4	0.011	0.015	98.9	8596.3	0.008	0.012
2	92.7	6285.6	0.015	0.015	110.2	27291.3	0.004	0.004	102.1	31355.4	0.003	0.003