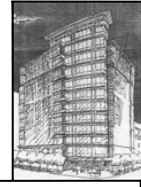


EXECUTIVE TOWER NW WASHINGTON, DC



SEAN HOWARD
STRUCTURAL

BUILDING DESCRIPTION

The Executive Tower 132,000 sqft Class A office building in the heart of Washington, DC located two blocks northeast of the White House and can see in plane sight the Washington Monument and Capitol Dome from the penthouse courtyard. This eleven story office building offers both sectioned and open floors plans to numerous companies such as Bloomberg Financial, Merrill Lynch, and AIG.

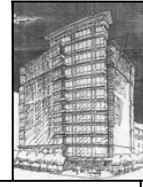


ARCHITECTURE

Executive Tower uses a curtain wall system consisting of glass with aluminum framing and precast concrete stretching horizontally around the whole building at each floor level with few precast concrete lines in the vertical direction. The first and second floors on the fronts facing New York Ave, H St and most of 14th St are showcased with granite paneling at floor level and over exterior columns. The east side borders and existing church also has all precast concrete panels at level 6 and is cmu block wall at level 5 and below. The west face on the south end features the building's trademark curved façade which links the skewed street of New York Ave and 14 St. This is further pronounced by keeping this shape separate from the rest of the building by not having a granite paneling at the 1st and 2nd level, cantilevering the corner by 19 feet and extending the façade above the 11th floor to make the outdoor viewing area. The roof of the building stands out by having precast capitals at level 10 and the roof of level 11 and is topped with a larger precast capital along the curved roof of the viewing area.



EXECUTIVE TOWER NW WASHINGTON, DC



SEAN HOWARD
STRUCTURAL

The lobby rests on the southwest corner at New York and 14th St. and is inviting to the eyes with its high ceilings, and wood, marble and granite veneers line the walls and floor. To reach the elevator lobby, one must walk through the rotunda, a cylindrical wood veneer room in the center of the buildings footprint. The first floor also houses the fitness center and retail with loading bay accessed on H St. The 2nd through 11th



floors are all tenant space. The penthouse and main roof contain the main mechanical room, cooling towers, emergency generators, building engineer's office and a covered outdoor view area that over looks the White House, Washington Monument and the Capitol dome.

PROJECT TEAM

Owner.....1399 New York Ave Associates
Managing Group.....Kaempfer Company
Architects.....Hellmuth, Obata + Kassabaum, Inc. (HOK)
Structural Engineers.....Tadger, Cohen, Edelson Assoc
MEP Engineers.....GHT Ltd
Geotechnical Engineers.....Schnabel Engineering
Construction Management.....Tompkins Builders