



• Project team

- o Owner: Board of Education - Anne Arundel County Public Schools
- o CM: Jacobs
- o Architects: Grimm+Parker Architects
- o Civil Engineers: KCI Tech, Inc.
- o Structural Engineers: Columbia Engineering, Inc.
- o MEP Engineers: James Posey Associates, Inc

• Project Overview

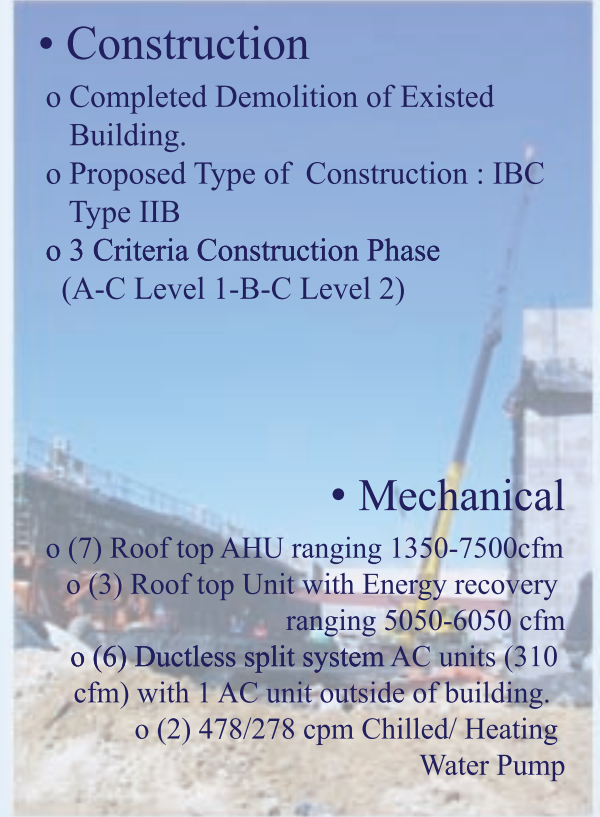
- o Date of Construction : Aug 05- Jan 07
- o Overall Project Cost: \$14 million
- o Project Delivery Method: CM agency with multiple prime contractors
 - o Size: 79,875 sf
 - o Number of Stories: 2
- (Two-story classroom wing, Single-story

• Construction

- o Completed Demolition of Existed Building.
- o Proposed Type of Construction : IBC Type IIB
- o 3 Criteria Construction Phase (A-C Level 1-B-C Level 2)

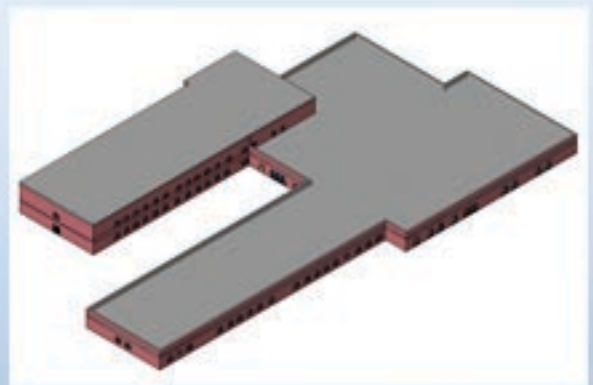
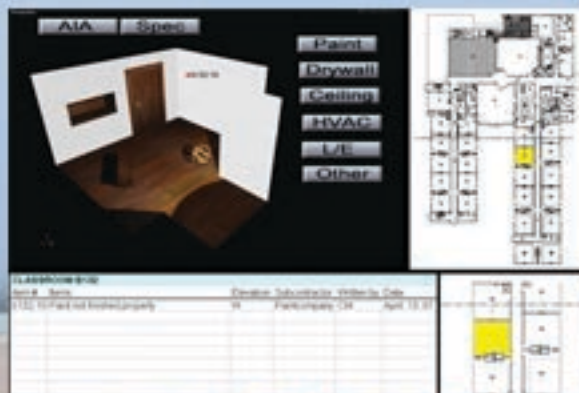
• Mechanical

- o (7) Roof top AHU ranging 1350-7500cfm
- o (3) Roof top Unit with Energy recovery ranging 5050-6050 cfm
- o (6) Ductless split system AC units (310 cfm) with 1 AC unit outside of building.
 - o (2) 478/278 cpm Chilled/ Heating Water Pump



• BIM for Punchlist

- o Difficulties during Punchlist Process
 - Poor Communication
 - Lack of Understanding in Contract Document
 - Lengthy List
 - Range of Expertise
 - Conflict with Owner's Vendor
- o Using BIM can Improve communication



• Evaluation of Mech. System

- o Suitable System for Elementary School
- o Most inexpensive Energy Cost
- o Experimented on Green Building Studiot

• Daylight Study

- o Daylight can impact the students performance
 - o Current Classroom only has two windows
 - o Adding Windows is not cost effective

